



2010 Graphic Communication

Intermediate 2

Finalised Marking Instructions

© Scottish Qualifications Authority 2010

The information in this publication may be reproduced to support SQA qualifications only on a non-commercial basis. If it is to be used for any other purposes written permission must be obtained from the External Print Team, Centre Services, Dalkeith.

Where the publication includes materials from sources other than SQA (secondary copyright), this material should only be reproduced for the purposes of examination or assessment. If it needs to be reproduced for any other purpose it is the centre's responsibility to obtain the necessary copyright clearance. SQA's External Print Team, Centre Services, at Dalkeith may be able to direct you to the secondary sources.

These Marking Instructions have been prepared by Examination Teams for use by SQA Appointed Markers when marking External Course Assessments. This publication must not be reproduced for commercial or trade purposes.

Question 1

- (a) Hidden detail/Hidden line/Hidden
- (b) Outline
- (c) Centre line/Centre

3 @ 1 mark for each correct answer

Total 3 marks

Question 2

- (a) Hard drive
- (b) Keyboard or Scanner
- (c) Monitor or Plotter

3 @ 1 mark for each correct answer

Total 3 marks

Question 3

- (a) North Direction/North Symbol/North
- (b) Switch
- (c) Sink Top
- (d) WC/Water Closet

4 @ 1 mark for each correct answer

Total 4 marks

Question 4

- (a) Bright, eye catching, easily seen and reflective of lights or similar wording
- (b) White
- (c) Violet or Green
- (d) Mix 2 different primary colours together/The actual primary colours noted ie red, yellow etc
- (e) Yellow-Green or Yellow-Orange

5 @ 1 mark for each correct answer

Total 5 marks

Question 5

- (a) Chamfer
- (b) Rectangular Array
- (c) Hatch/Hatching
- (d) Fillet

4 @ 1 mark for each correct answer

Total 4 marks

Question 6

- (a) 10 Horizontal Outlines **3 marks**
 - 10 3 marks
 - 7 – 9 2 marks
 - 4 – 6 1 mark

- (b) 12 Vertical Outlines **3 marks**
 - 10 – 12 3 marks
 - 7 – 9 2 marks
 - 4 – 6 1 mark

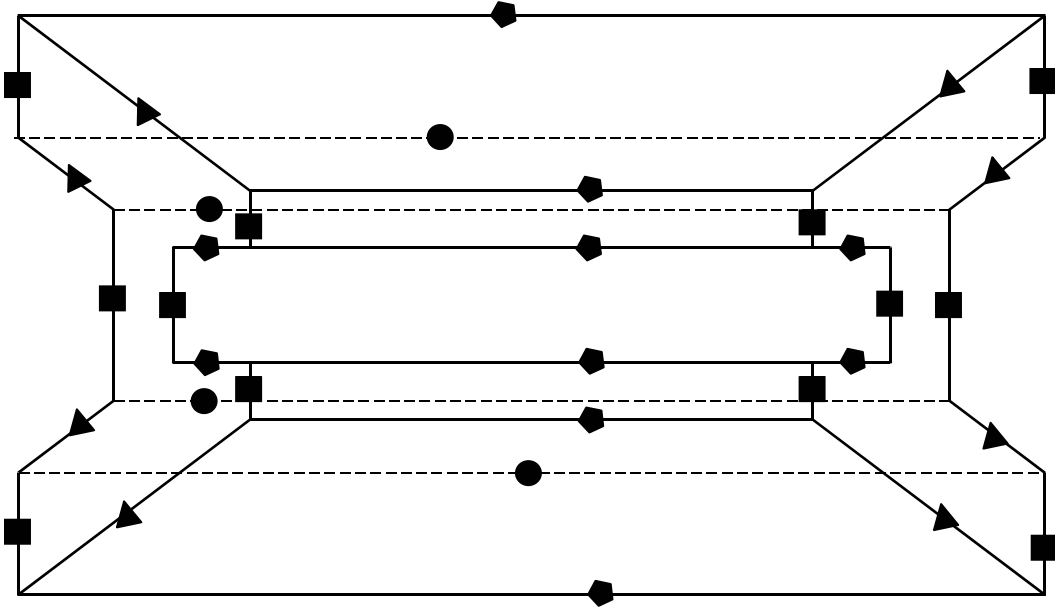
- (c) 8 Sloping Lines **2 marks**
 - 7 – 8 2 marks
 - 4 – 6 1 mark

- (d) 4 Hidden Detail Lines **2 marks**
 - 3 – 4 2 marks
 - 2 1 mark

Total 10 marks

NB: DRAWINGS THROUGHOUT MARKING INSTRUCTIONS ARE NOT TO SCALE

Question 6



Plan

Question 7

Plan

- (a) Divide Plan (generators) **1 mark**

Elevation

- (b) 6 vertical lines + 3 horizontal **2 marks**

7 – 9 lines 2 marks

4 – 6 lines 1 mark

- (c) Establish 12 accurate points on the curve **2 marks**

9 – 12 lines 2 marks

4 – 8 lines 1 mark

- (d) Hidden detail curve 1 mark **1 mark**

- (e) Split at A 1 mark **1 mark**

Development

- (f) Development – 12 accurate divisions – correct length \pm 12mm **1 mark**

- (g) Establish 13 accurate points for curve creation **3 marks**

10 – 13 3 marks

7 – 9 2 marks

4 – 6 1 mark

True Shape

- (h) Correct projection for TRUE SHAPE from End Elevation **1 mark**

- (i) Establish 12 accurate points for curve creation **2 marks**

9 – 12 2 marks

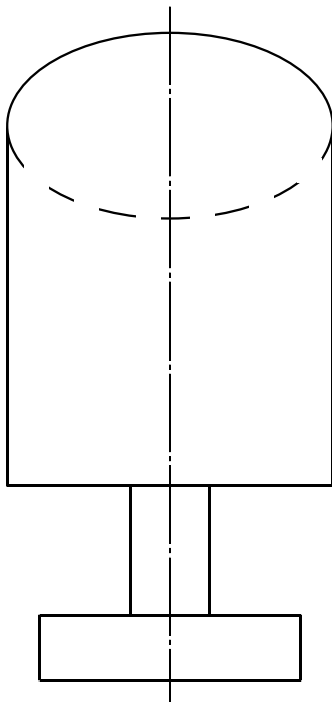
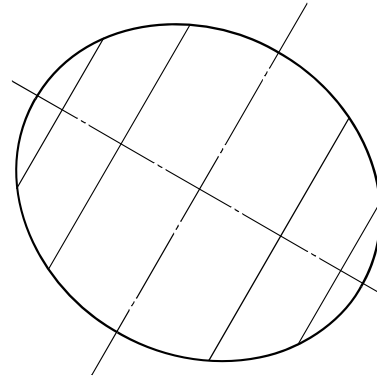
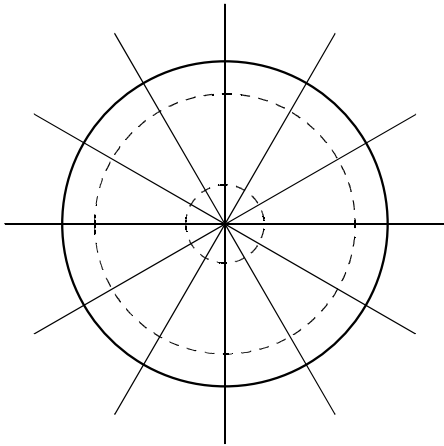
4 – 8 1 mark

- (j) **Quality** freehand curves created **1 mark**

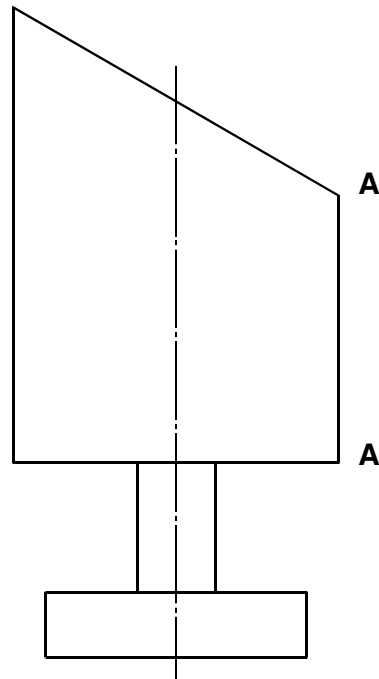
Minimum of 2 quality curves 1 mark

Total 15 marks

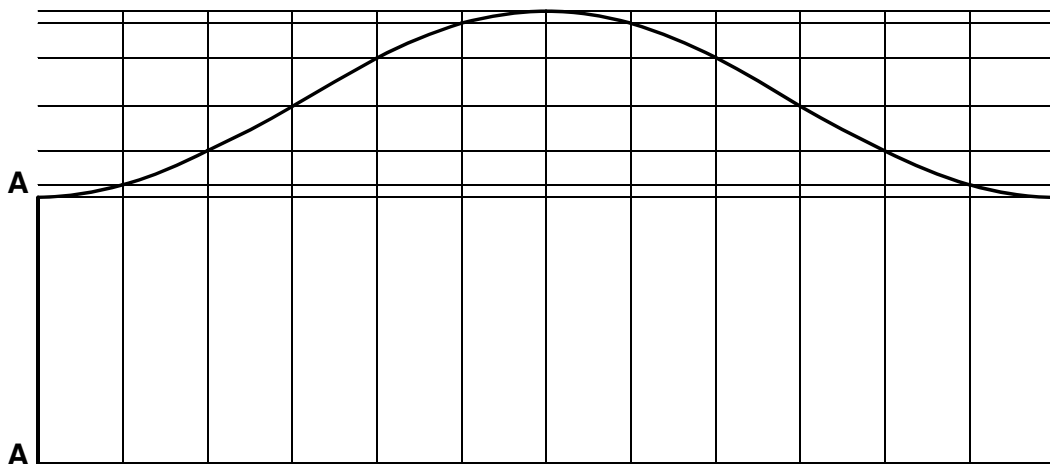
Question 7



Elevation



End Elevation



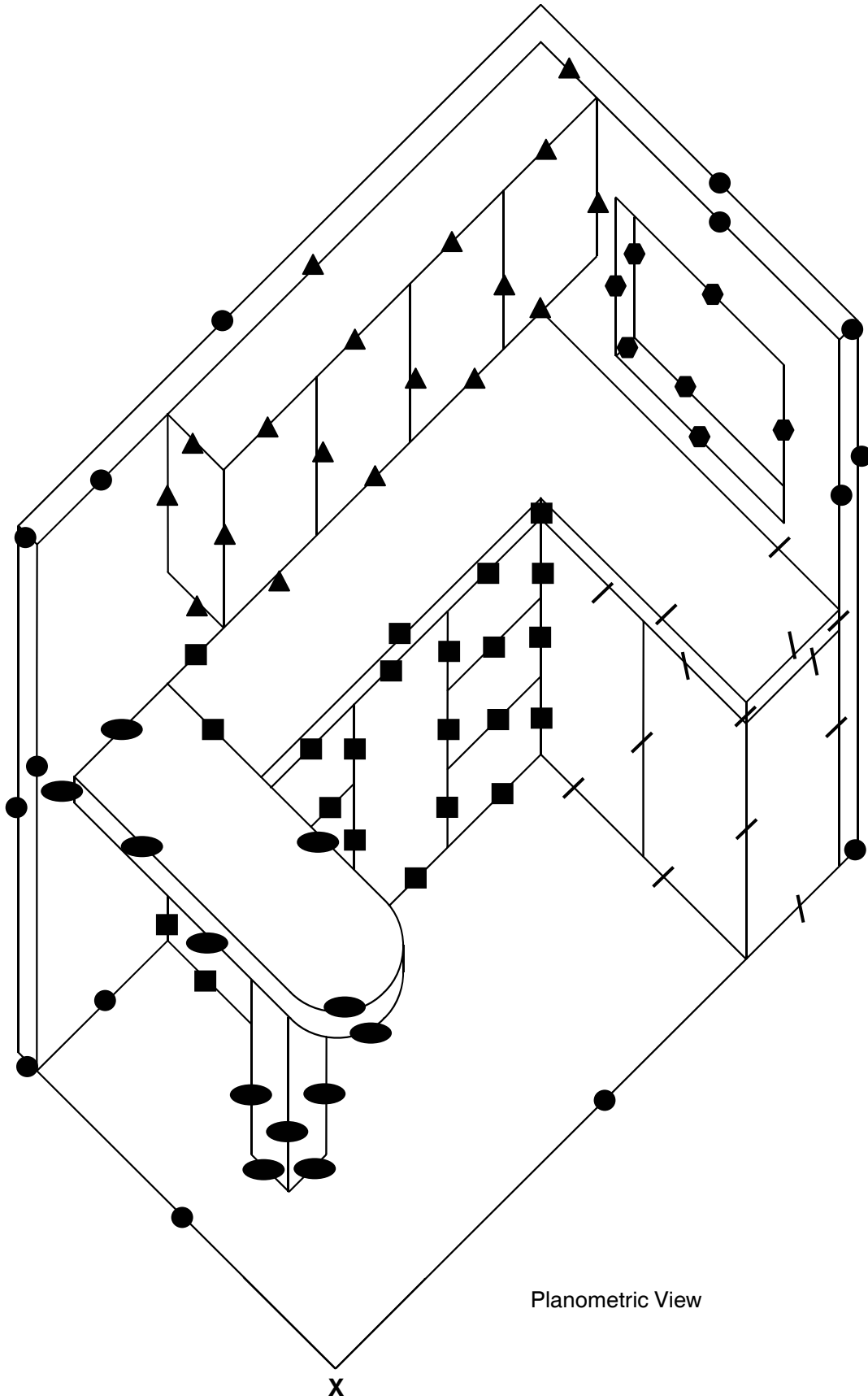
Development

Question 8

- (a) Walls and Floor ($12 + 3 = 15$) Lines **2 marks**
12 – 15 2 marks
7 – 11 1 mark
- (b) Wall cupboards – 18 lines (excluding handles) **3 marks**
17 – 18 3 marks
12 – 16 2 marks
7 – 11 1 mark
- (c) Window and Location – 7 lines **1 mark**
4 – 7 1 mark
- (d) Breakfast Bar – 10 lines + 2 circles (tangential line excluded) **2 marks**
11 – 12 2 marks
6 – 10 1 mark
- (e) Drawer Unit – 22 lines **3 marks**
17 – 22 3 marks
12 – 16 2 marks
7 – 11 1 mark
- (f) Window Unit – 14 lines **2 marks**
12 – 14 2 marks
7 – 11 1 mark
- (g) Door and Drawer Handles – 9 lines **1 mark**
(Fairly accurate representation and position)
5 + handles 1 mark

Total 14 marks

Question 8



Question 9

Plan

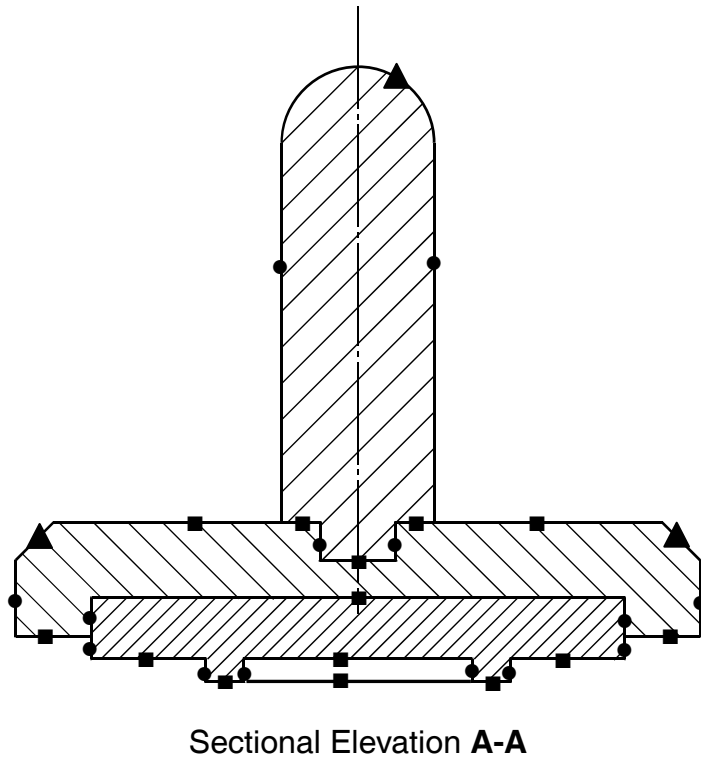
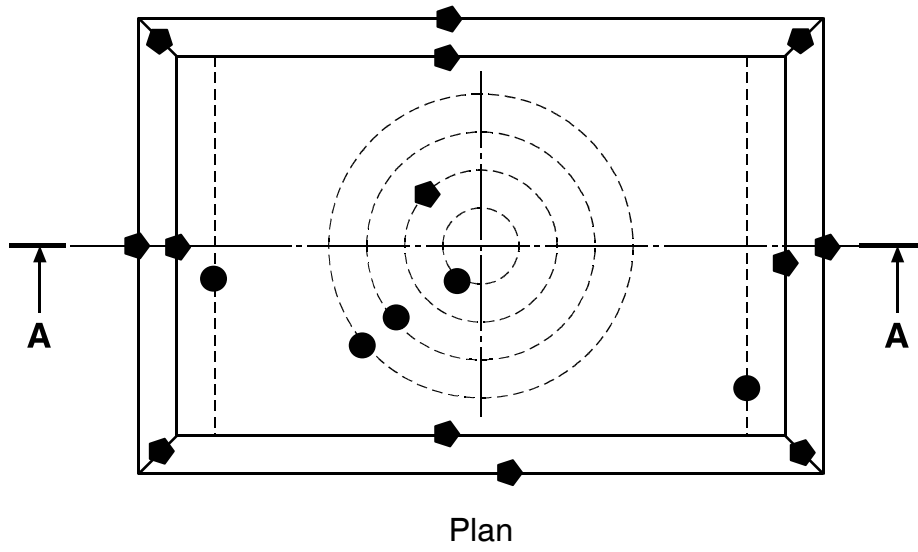
- (a) Outlines and Outline Circle ($12 + 1 = 13$) **2 marks**
- | | |
|---------|---------|
| 10 – 13 | 2 marks |
| 6 – 9 | 1 mark |
- (b) Hidden lines + Hidden Circles ($2 + 3 = 5$) **1 mark**
- | | |
|-------|--------|
| 3 – 5 | 1 mark |
|-------|--------|

Sectional Elevation

- (c) Vertical lines – 14 lines **2 marks**
- | | |
|---------|---------|
| 10 – 14 | 2 marks |
| 6 – 9 | 1 mark |
- (d) Horizontal lines – 14 lines **2 marks**
- | | |
|---------|---------|
| 10 – 14 | 2 marks |
| 6 – 9 | 1 mark |
- (e) Angled lines and Curve – 2 lines + 1 curve **1 mark**
- | | |
|--------------------------|--------|
| 2 lines and curve | 1 mark |
|--------------------------|--------|
- (f) Assembly of parts **2 marks**
- | | |
|-----------------------------|---------|
| 3 parts correctly assembled | 2 marks |
| 2 parts correctly assembled | 1 mark |
- (g) Application of Section Lines to BS **2 marks**
- | | |
|------------------|---------|
| 3 components | 2 marks |
| 1 – 2 components | 1 mark |

Total 12 marks

Question 9



[END OF MARKING INSTRUCTIONS]