



2009 Graphic Communication

Intermediate 2

Finalised Marking Instructions

© Scottish Qualifications Authority 2009

The information in this publication may be reproduced to support SQA qualifications only on a non-commercial basis. If it is to be used for any other purposes written permission must be obtained from the Question Paper Operations Team, Dalkeith.

Where the publication includes materials from sources other than SQA (secondary copyright), this material should only be reproduced for the purposes of examination or assessment. If it needs to be reproduced for any other purpose it is the centre's responsibility to obtain the necessary copyright clearance. SQA's Question Paper Operations Team at Dalkeith may be able to direct you to the secondary sources.

These Marking Instructions have been prepared by Examination Teams for use by SQA Appointed Markers when marking External Course Assessments. This publication must not be reproduced for commercial or trade purposes.

Question 1

- (a) Header; Heading
- (b) Gutter
- (c) Margin; Left Margin
- (d) Caption
- (e) Body Text, text, column
- (f) Footer

1 mark each for the correct answer.

Total 6 marks

Question 2

- (a) To magnify or reduce, to scale up or down a drawing to get it to fit onto the screen or to add detail to a drawing.
- (b) To move a drawing up, down or across the screen to locate a specific area without altering the magnification.
- (c) Removal of material from an edge or corner at a given angle or distance.
- (d) To remove parts of lines and circles between two boundary points or lines.

1 mark each for the correct answer **with** a supporting sketch.

Total 4 marks

Question 3

- (a) With a peaceful, soothing, refreshing, relaxing, restful, calming and cooling effect, the colour green denotes a fresh, springtime feel.
- (b) Use the colour red to grab attention and to get people to take action. Use red when you don't want the notice board to sink into the background.
- (c) Yellow, Yellow-Green, Blue-Green, Blue
- (d) White.

1 mark each for the correct answer.

Total 4 marks

NB: DRAWINGS THROUGHOUT MARKING INSTRUCTIONS ARE NOT TO SCALE

Question 4



- (a) Concrete.
- (b) Insulation.
- (c) Brickwork.
- (d) Sawn Wood – all types.

1 mark each for the correct answer.


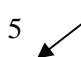
Total 4 marks

Question 5

Battery Charger Only

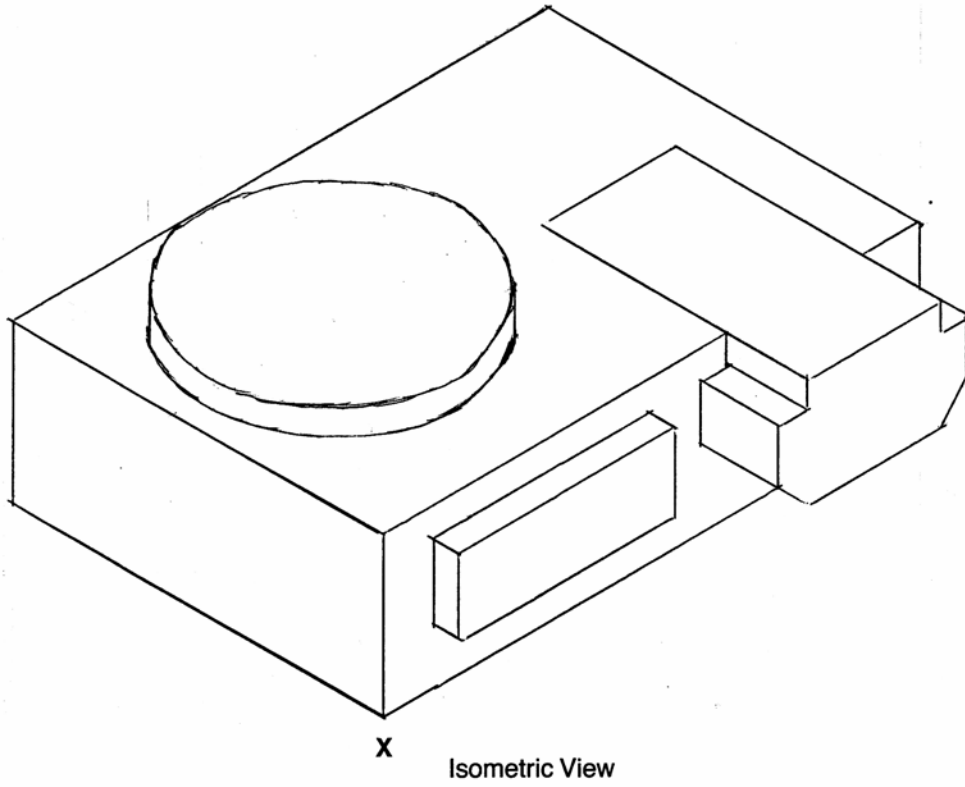
- (a) 13 Isometric Lines – 6  + 7  **3 marks**
- 10 – 13 lines 3 marks
7 – 9 lines 2 marks
4 – 6 lines 1 mark
- (b) 6 Vertical Lines
- 4 – 6 lines 1 mark **1 mark**

Battery Unit Only

- (c) 11 Isometric Lines – 6  + 5  **3 marks**
- 10 – 11 lines 3 marks
7 – 9 lines 2 marks
4 – 6 lines 1 mark
- (d) 6 Vertical Lines **1 mark**
- 4 – 6 = 1 mark
- (e) 2 Chamfer Lines **1 mark**
- 2 for 1 mark
- (f) 3 Lines Common to both **1 mark**
- (g) Top Isometric Curve 12 Points accurately positioned + 2 connecting lines **3 marks**
- 10 – 14 points 3 marks
7 – 9 points 2 marks
4 – 6 points 1 mark
- (h) Lower Isometric Curve 6 Points accurately projected **1 mark**
- 4 – 6 points 1 mark

Total 14 marks

Question 5



Question 6

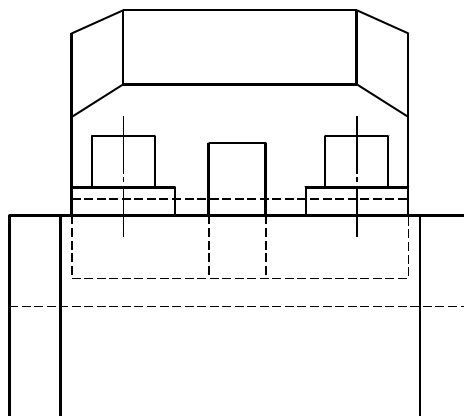
Pedal Outlines

- (a) Horizontal Lines – 9 2 marks
- | | |
|-------------|---------|
| 7 – 9 lines | 2 marks |
| 4 – 6 lines | 1 mark |
- (b) Vertical Lines – 18 4 marks
- | | |
|---------------|---------|
| 13 – 18 lines | 4 marks |
| 10 – 12 lines | 3 marks |
| 7 – 9 lines | 2 marks |
| 4 – 6 lines | 1 mark |
- (c) Sloping Lines – 4 1 mark
- | | |
|-------------|--------|
| 3 – 4 lines | 1 mark |
|-------------|--------|

Pedal Hidden Detail

- (d) 6 Horizontal Lines + 4 Vertical Lines 3 marks
- | | |
|--------------|---------|
| 8 – 10 lines | 3 marks |
| 5 – 7 lines | 2 marks |
| 2 – 4 lines | 1 mark |

Total 10 marks



End Elevation

Question 7

Elevation Assembly

- (a) Elevation of Footplate 11 lines + arc **3 marks**
- | | |
|---------------|---------|
| 10 – 12 lines | 3 marks |
| 7 – 9 lines | 2 marks |
| 4 – 6 lines | 1 mark |
- (b) Hidden detail 2 lines + arc (all 3 required) **1 mark**

Sectional End Elevation

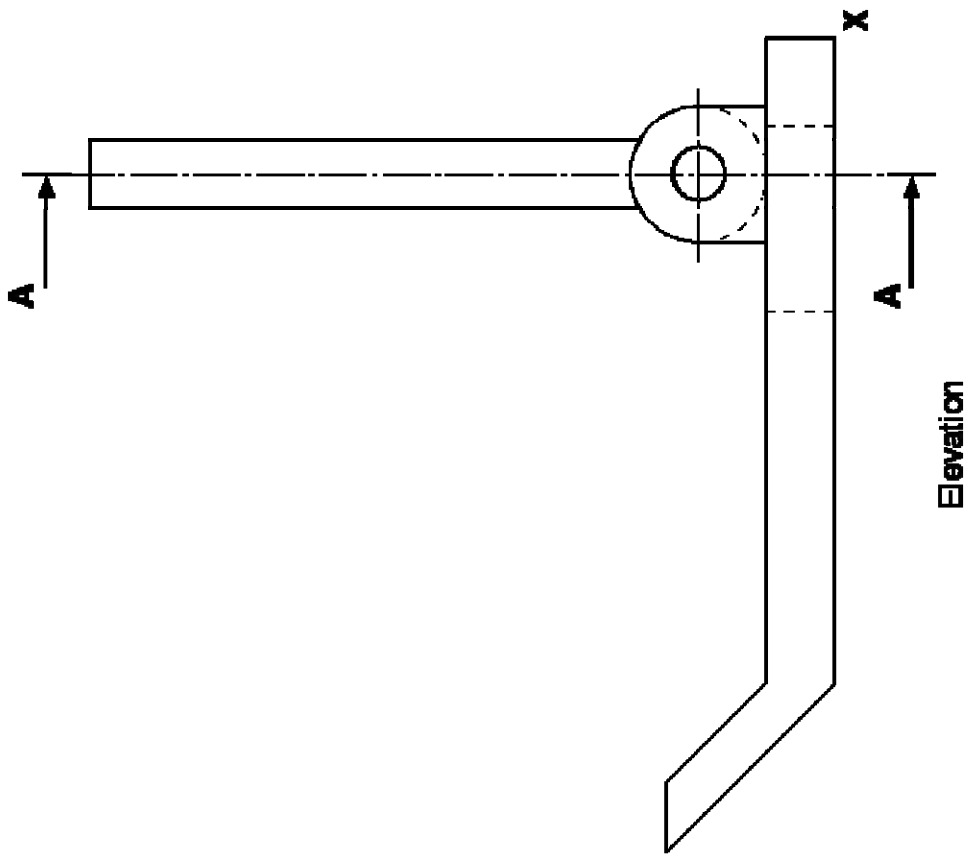
- (c) 15 Horizontal Lines **4 marks**
- | | |
|---------------|---------|
| 13 – 15 lines | 4 marks |
| 10 – 12 lines | 3 marks |
| 7 – 9 lines | 2 marks |
| 4 – 6 lines | 1 mark |
- (d) 12 Vertical Lines **3 marks**
- | | |
|---------------|---------|
| 10 – 12 lines | 3 marks |
| 7 – 9 lines | 2 marks |
| 4 – 6 lines | 1 mark |

Hatching of Parts

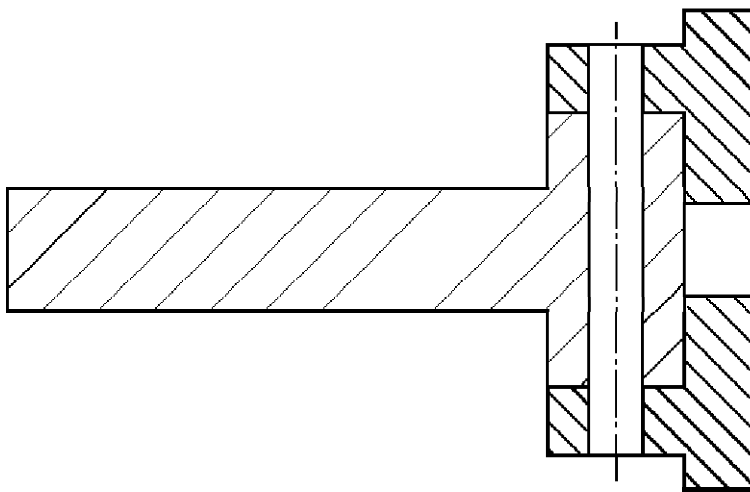
- (e) 45° hatching applied and differentiated between footplate and bracket **2 marks**
- (One mark for correct section of either footplate or bracket, additional mark for differentiated section lines applied to remaining part @ 45°.)
- (f) BS applied to pin + slot (No hatching) **1 mark**

Total 14 marks

Question 7



Elevation



Sectional End Elevation A-A

Question 8

Plan

- (a) Square Prism (3 hidden + 3 outline) = 6 **1 mark**
4 – 6 lines 1 mark
- (b) Cut Hex Top – 6 lines **2 marks**
5 – 6 lines 2 marks
3 – 4 lines 1 mark
- (c) Small Hex – 6 hidden lines **1 mark**
4 – 6 lines 1 mark
- (d) Sloping – 6 hidden lines **1 mark**
4 – 6 lines 1 mark

End Elevation

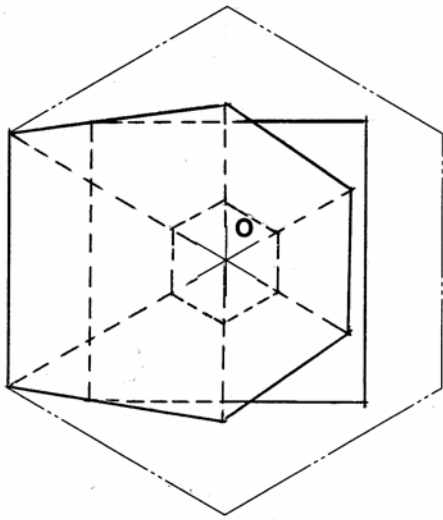
- (e) Square Prism 4 lines (2v + 2h) **1 mark**
3 – 4 lines 1 mark
- (f) 4 sloping outlines of pyramid **1 mark**
3 – 4 lines 1 mark
- (g) 6 sloping hidden detail lines of pyramid **1 mark**
4 – 6 lines 1 mark
- (h) Hexagonal cut surface 6 lines **1 mark**
4 – 6 lines 1 mark

Surface Development

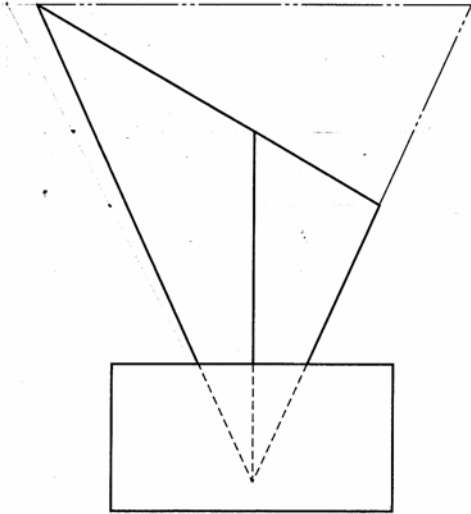
- (i) Clear construction or use of True Length in development **1 mark**
- (j) Correct divisions marked (6) Tolerance of 1mm per division **1 mark**
- (k) True heights marked on generators **2 marks**
6 – 7 lines 2 marks
3 – 5 lines 1 mark
- (l) Fold lines applied correctly to ALL appropriate edges **1 mark**

Total 14 marks

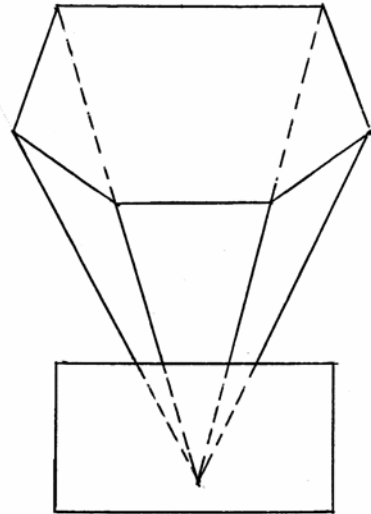
Question 8



Plan

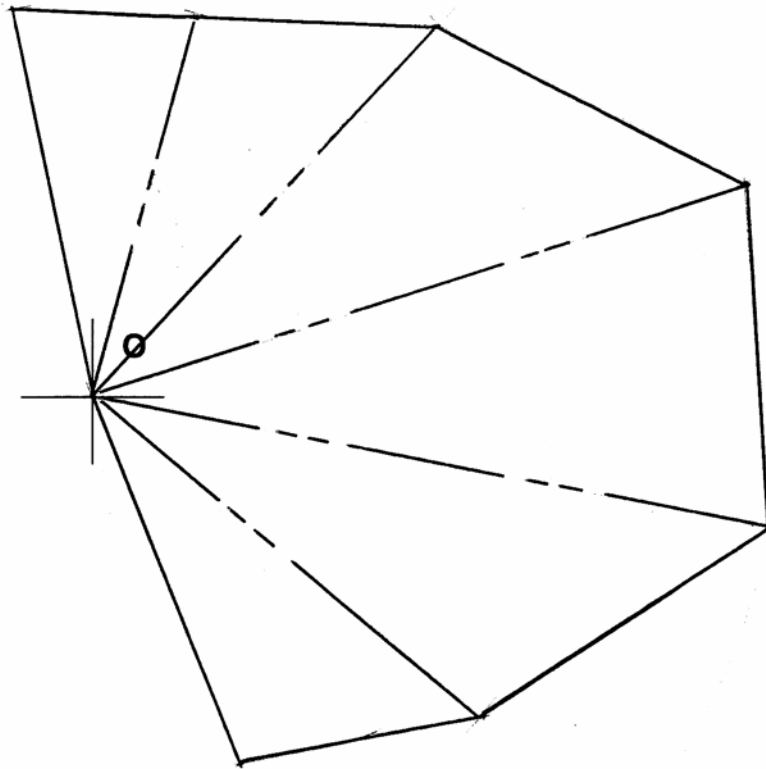


O
Elevation



End Elevation

Question 8



Development

[END OF MARKING INSTRUCTIONS]