



2011 Graphic Communication

Intermediate 1

Finalised Marking Instructions

© Scottish Qualifications Authority 2011

The information in this publication may be reproduced to support SQA qualifications only on a non-commercial basis. If it is to be used for any other purposes written permission must be obtained from SQA's NQ Delivery: Exam Operations Team.

Where the publication includes materials from sources other than SQA (secondary copyright), this material should only be reproduced for the purposes of examination or assessment. If it needs to be reproduced for any other purpose it is the centre's responsibility to obtain the necessary copyright clearance. SQA's NQ Delivery: Exam Operations Team may be able to direct you to the secondary sources.

These Marking Instructions have been prepared by Examination Teams for use by SQA Appointed Markers when marking External Course Assessments. This publication must not be reproduced for commercial or trade purposes.

Question 1

- (a) Mirror 1 mark
- (b) Zoom 1 mark
- (c) Copy 1 mark

Total 3 marks

Question 2

- (a) Switch 1 mark
- (b) Sink Top 1 mark
- (c) Lamp, Light 1 mark
- (d) Door 1 mark

Total 4 marks

Question 3

- (a) White 1 mark
- (b) Yellow, Orange, Red Orange, Yellow Orange, Red 1 mark
- (c)
 - (i) Gradient Fill 1 mark
 - (ii) Solid Fill 1 mark
 - (iii) Hatch 1 mark

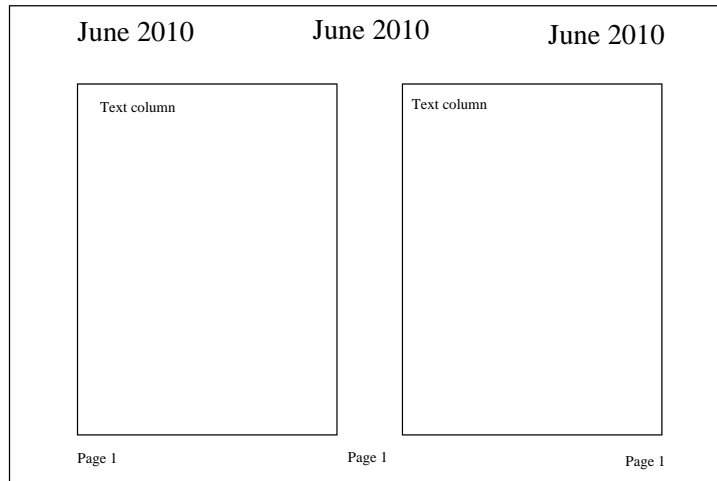
Total 5 marks

Question 4

- (a) X – Margin **1 mark**
Y – Gutter **1 mark**

- (b) Landscape **1 mark**

- (c) Footer in any position as shown below **1 mark**



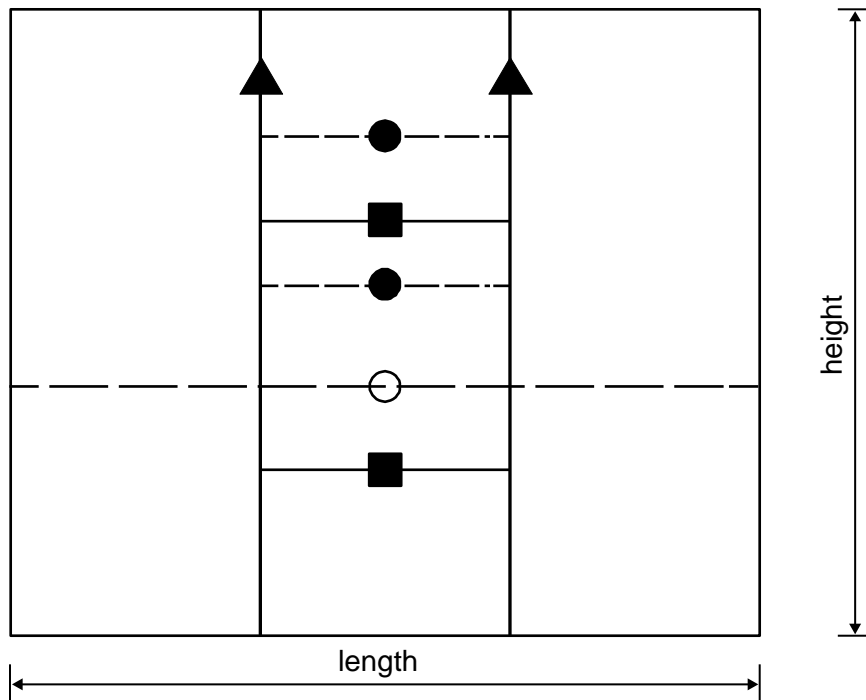
- (d) USB key, portable hard drive, Zip drive **1 mark**
Any USB storage device
Pen drive

Total 5 marks

Notes for drawing questions:

- Tolerances for all drawings $\pm 1\text{mm}$
- When marking drawings, all markers must operate the “follow-on rule” and ensure that candidates are **not** penalised twice.

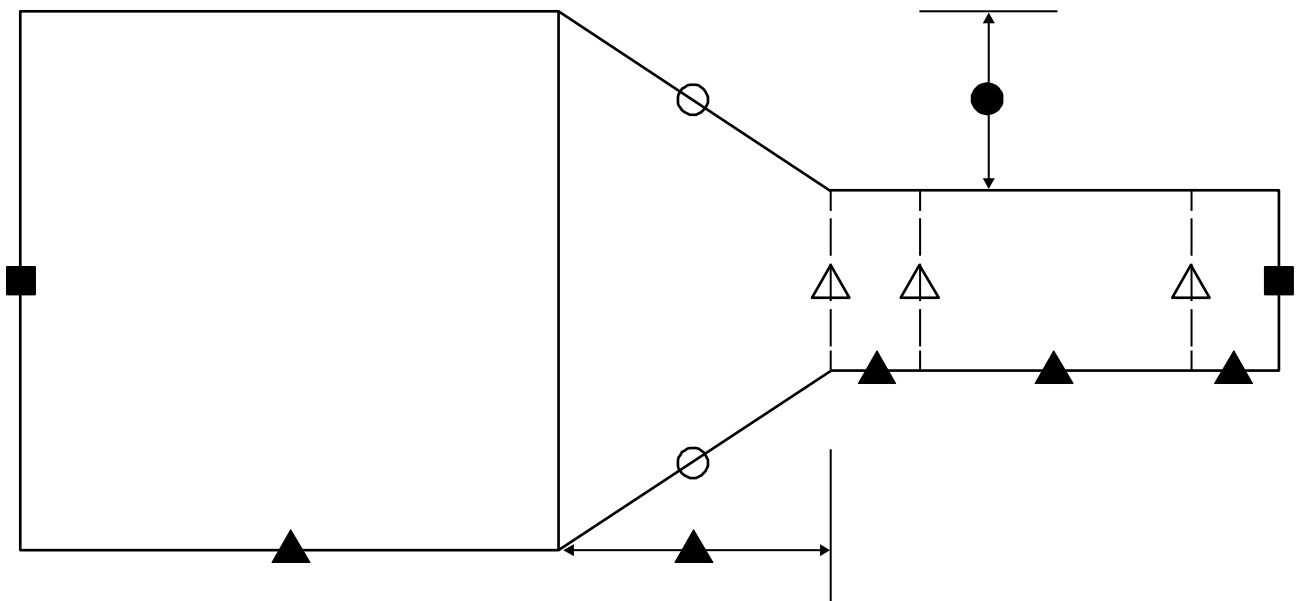
Question 5



End Elevation

- | | | | |
|-----|---------------------------------------------|---|---------------|
| (a) | Correct projection from elevation | | 1 mark |
| (b) | Overall length and height | | 1 mark |
| (c) | 2 vertical lines in correct position marked | ▲ | 1 mark |
| (d) | 2 horizontal lines marked | ■ | 1 mark |
| (e) | 1 hidden line marked | ○ | 1 mark |
| (f) | 2 hidden lines marked | ● | 1 mark |

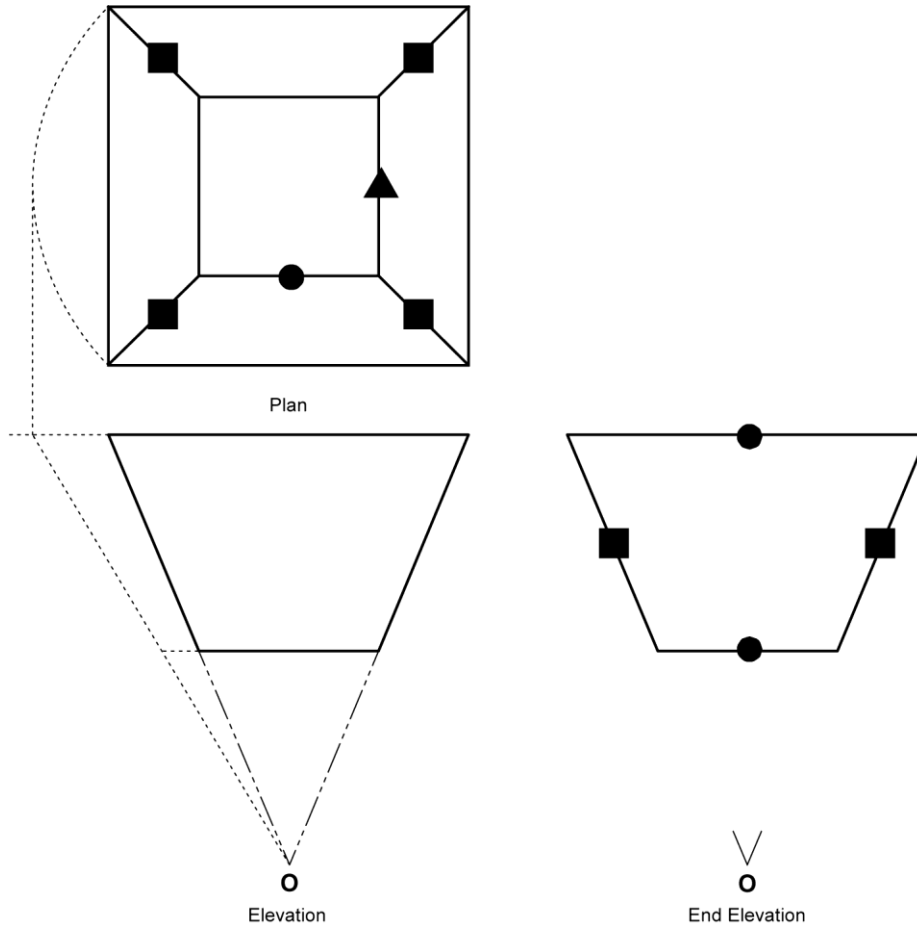
Elevation



- | | | | |
|-----|-----------------------------------------------------------------------|---|---------------|
| (g) | Plan projected correctly at least one view | | 1 mark |
| (h) | 5 lengths marked | ▲ | 1 mark |
| | 4/5 lengths | | 1 mark |
| (i) | 2 widths marked | ■ | 1 mark |
| (j) | Position of handle marked | ● | 1 mark |
| (k) | 3 hidden/1 full line/3-4 lines – 1 mark
(correct line type) marked | △ | 1 mark |
| (l) | 2 sloping lines marked | ○ | 1 mark |

Total 12 marks

Question 6



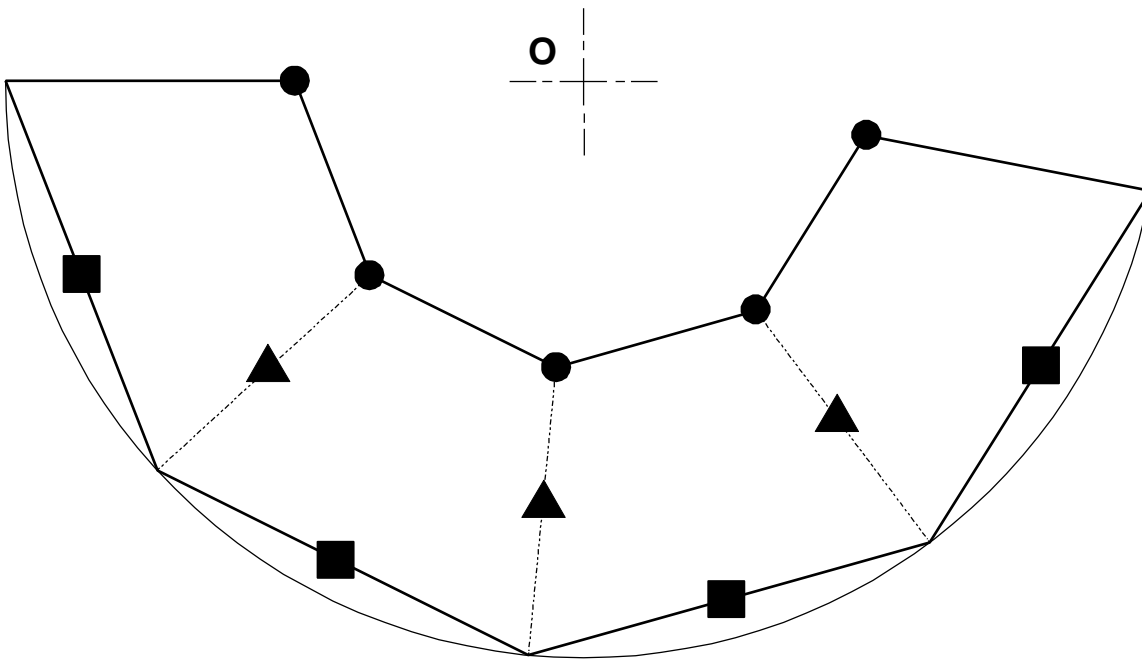
Plan

- (a) 2 diagonal construction lines for pyramid **1 mark**
- (b) Projected from elevation correctly **1 mark**
- (c) Correct length marked **1 mark**
- (d) Correct width marked **1 mark**
- (e) 4 diagonals marked **1 mark**

End Elevation

- (f) 2 correct widths marked **1 mark**
- (g) 2 sloping lines marked **1 mark**

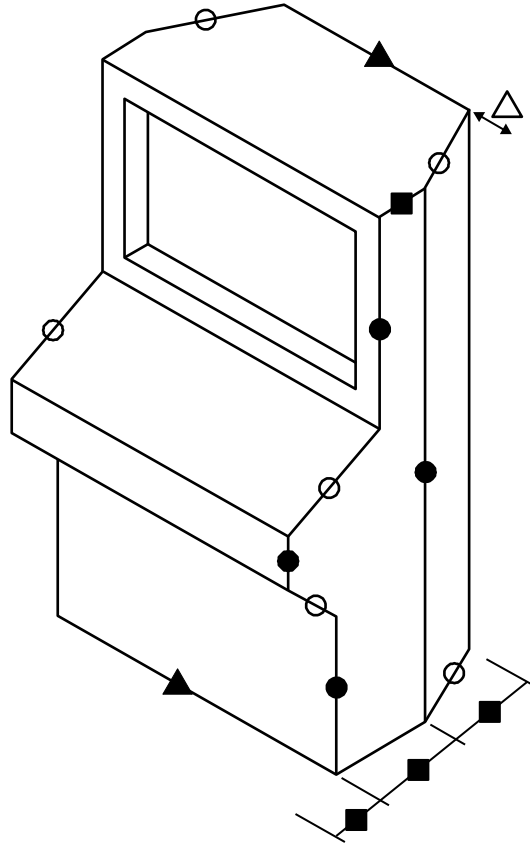
Development



- (h) Construction of 'True Length' shown correctly 1 mark
- (i) true length used for arc 1 mark
- (j) 4 equal divisions marked 1 mark
- (k) 5 heights marked 1 mark
- (l) 3 fold lines marked 1 mark
- (m) Correctly outlined 1 mark

Total 13 marks

Question 7



Case

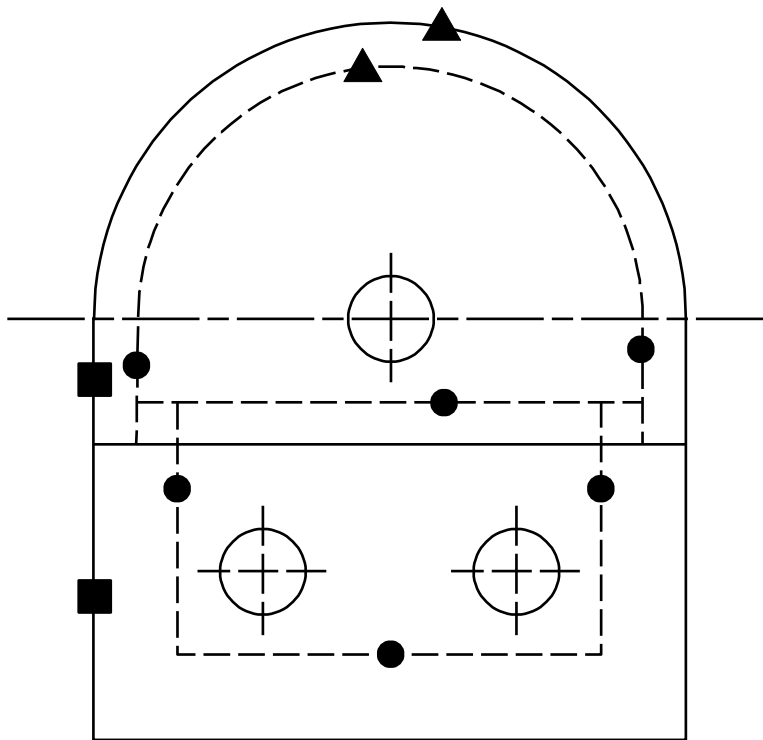
- | | | | |
|-----|-------------------------|---|----------------|
| (a) | Correct position | | 1 mark |
| (b) | 4 widths marked | ■ | 2 marks |
| | 3-4 widths | | 2 marks |
| | 2 widths | | 1 mark |
| (c) | 4 heights marked | ● | 2 marks |
| | 4 heights | | 2 marks |
| | 2-3 heights | | 1 mark |
| (d) | 2 lengths marked | ▲ | 1 mark |
| (e) | 6 sloping lines marked | ○ | 2 marks |
| | 5-6 lines | | 2 marks |
| | 3-4 lines | | 1 mark |
| (f) | Correct position marked | △ | 1 mark |

Screen

- (g) 1 height **1 mark**
- (h) 1 length **1 mark**
- (i) 1 depth **1 mark**
- (j) Correct position **1 mark**

Total 13 marks

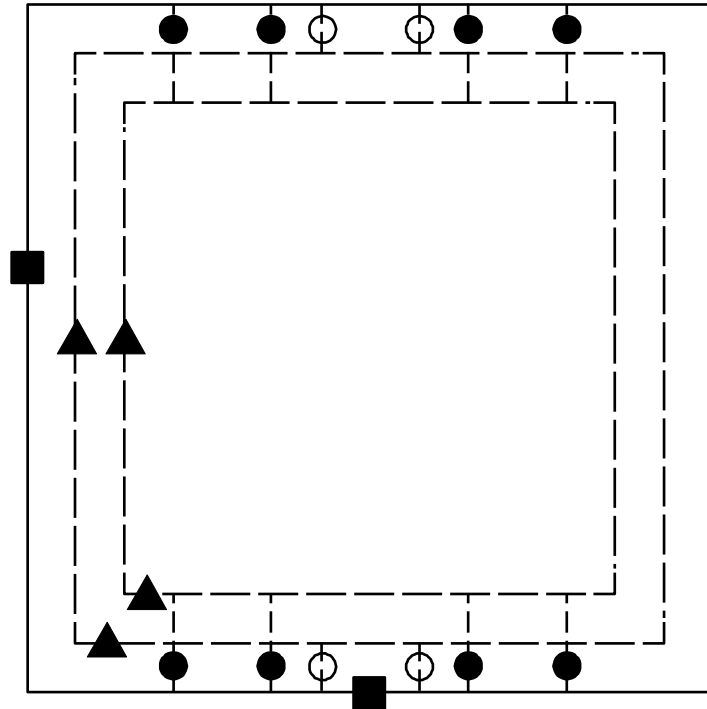
Question 8



Elevation

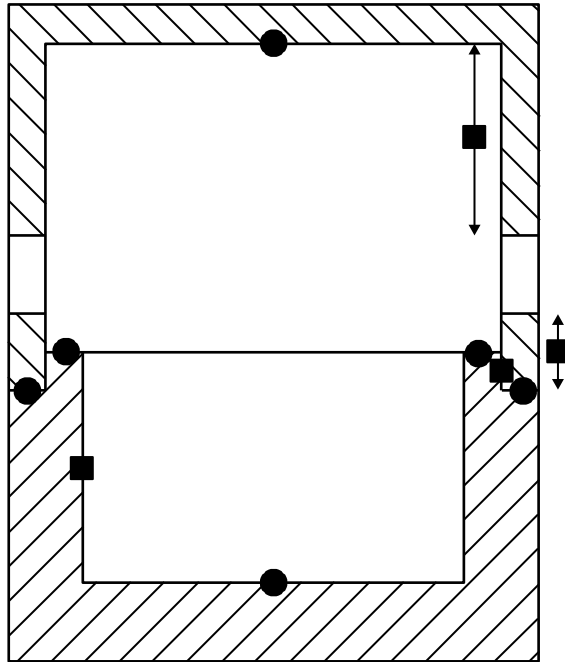
Elevation

- | | | | |
|-----|------------------------------------------|---|----------------|
| (a) | Correctly assembled and correct position | | 1 mark |
| (b) | 2 radii marked | ▲ | 1 mark |
| (c) | 2 heights marked | ■ | 1 mark |
| (d) | 6 hidden lines marked | ● | 2 marks |
| | 6 lines | | 2 marks |
| | 3-5 lines | | 1 mark |



Plan

- (e) Overall L and H **1 mark**
- (f) 2 lengths and 2 breadths marked (must be hidden detail) ▲ **1 mark**
- (g) 8 lines marked (must be hidden detail) ● **1 mark**
 4-8 lines **1 mark**
- (h) 4 lines marked (must be hidden detail) ○ **1 mark**
 2-4 lines **1 mark**



Sectional End Elevation

- | | | | |
|-----|------------------------------------|---|----------------|
| (i) | Overall breadth and height | | 1 mark |
| (j) | 6 breadths marked | ● | 2 marks |
| | 5-6 lines | | 2 marks |
| | 3-4 lines | | 1 mark |
| (k) | 4 heights marked | ■ | 1 mark |
| | 3-4 | | 1 mark |
| (l) | 2 parts correctly hatched | | 1 mark |
| (m) | Hatching at 45° and differentiated | | 1 mark |

Total 15 marks

[END OF MARKING INSTRUCTIONS]