

STAPLE HERE

FOR OFFICIAL USE

--	--	--	--	--	--	--	--	--	--

1330/401

NATIONAL QUALIFICATIONS 2010
TUESDAY, 18 MAY
9.00 AM – 10.15 AM

GRAPHIC COMMUNICATION
STANDARD GRADE
Foundation Level

Fill in these boxes and read what is printed below.

Full name of centre					Town	
Forename(s)					Surname	
Date of birth	Day	Month	Year	Scottish candidate number	Number of seat	
	<input type="text"/>	<input type="text"/>	<input type="text"/>	<input type="text"/>	<input type="text"/>	<input type="text"/>

**80 marks are allocated to this paper: KI 30 marks
DA 50 marks**

- 1 Answer **all** questions.
- 2 Read each question carefully before you answer.
- 3 Written answers may be in **ink** or **pencil**.
- 4 Drawings and sketches **must be in pencil**.
- 5 Sketches need only be in line form—**do not spend time rendering**.
- 6 Dimensions are given in millimetres or as stated.
- 7 Orthographic drawings are in third angle projection.
- 8 For each question, the element being tested and the mark allocation are shown in brackets, eg (DA 5) means a question on Drawing Abilities worth 5 marks.
- 9 **At the end of the examination**

check that your name is on every sheet;
put the sheets in correct numerical order;
place this sheet on top of the others;
join all sheets together by **stapling** at the top left-hand corner;
before leaving the examination room, you must give these sheets to the Invigilator (if you do not you may lose all the marks for this paper).

	KI	DA
1		
2		
3		
4		
5		
6		
7		
8		
9		
Total Marks		



[BLANK PAGE]

A list of devices that can be connected to a computer is given.

- Monitor
- Mouse
- Printer
- Scanner
- Modem
- Plotter
- Keyboard

Select from the above list a device:

(a) that could be used to add text to a letter.

Device

(b) that could be used to add an existing manually produced drawing to the computer.

Device

(c) which could be used to obtain hard copies of an orthographic drawing.

Device

(d) that could be used to add lines to a CAD drawing.

Device

(e) that you could use to get copies of a DTP document.

Device

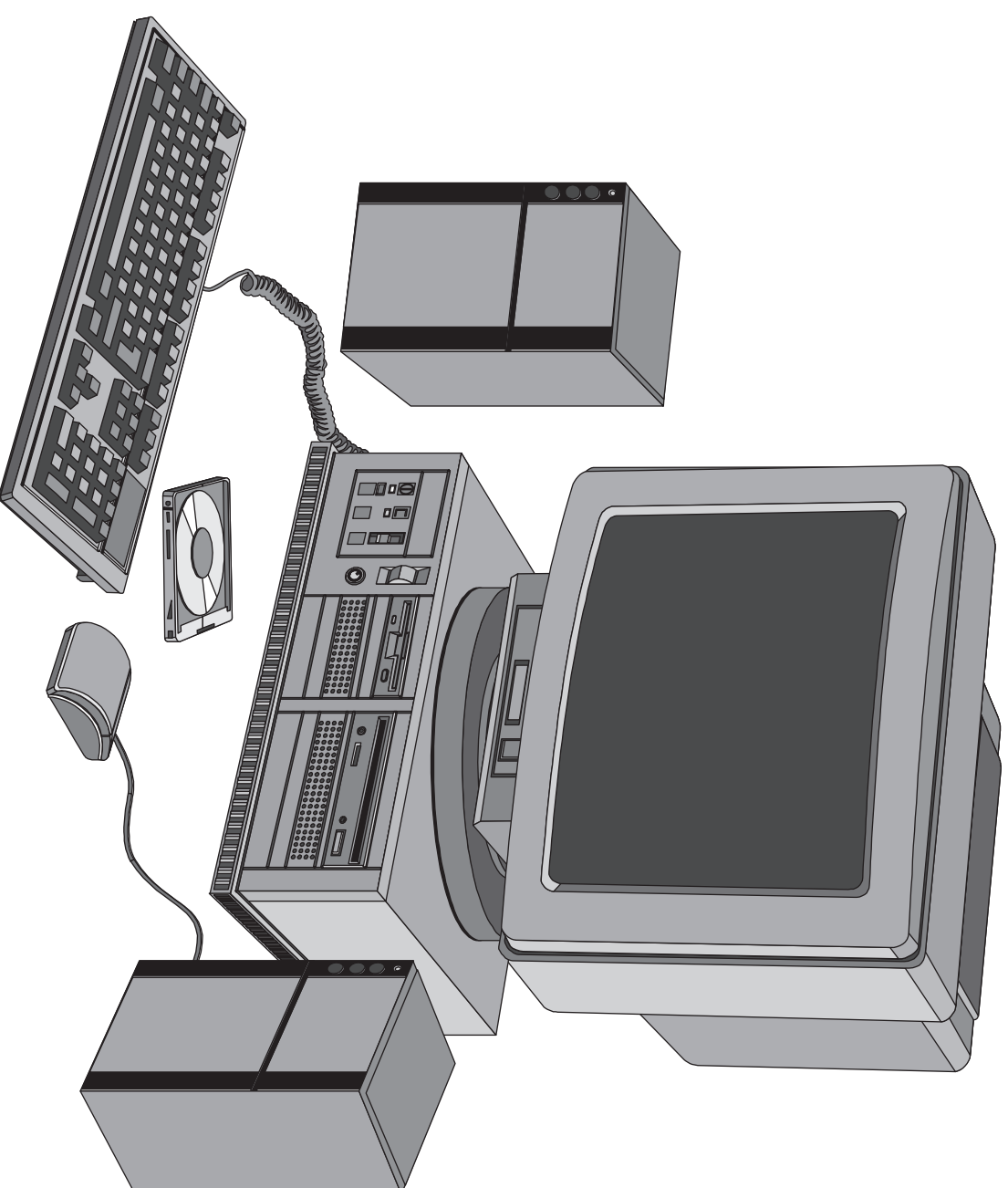
(f) that could be used to send documents from one computer to another in a different country.

Device

(g) that is used to view data stored on the computer.

Device

Total (KI 7)



Three views of a junction box are shown.

(a) State the name given to these types of view.

Name **KI 1**

(b) State the name of the line types **P, Q, R, S** and **T**.

P

Q

R

S

T **KI 5**

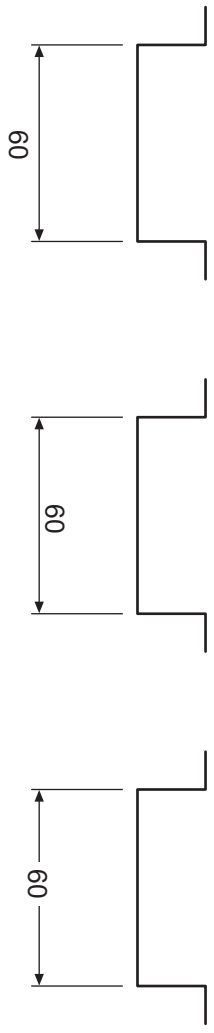
(c) State the name given to **View A**.

View A **KI 1**

(d) State the angle used for the lines at **T**.

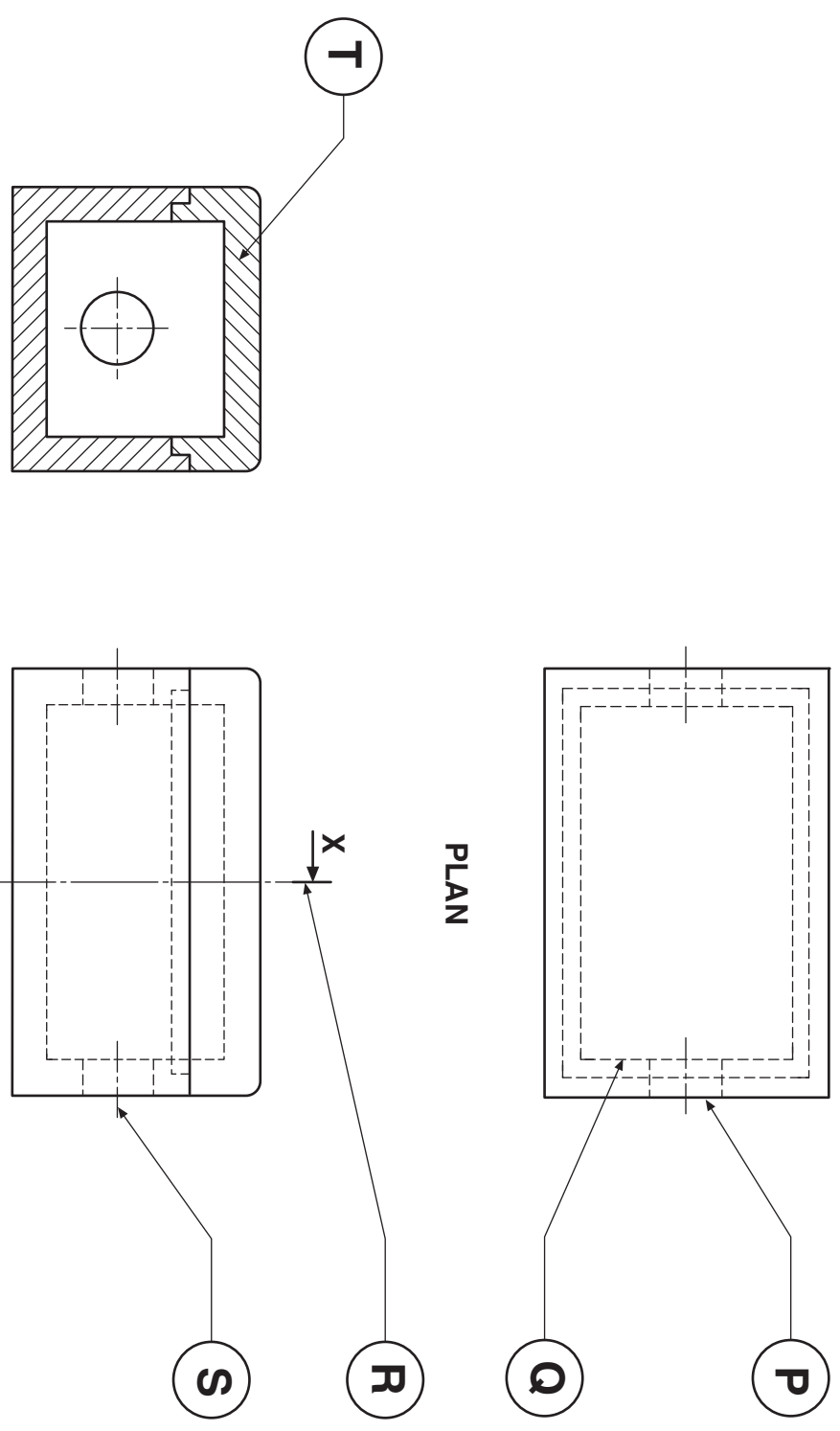
Angle **KI 1**

(e) Look at the dimensions below and place a tick (✓) in the box that shows the dimension correct to British Standards.



KI 1

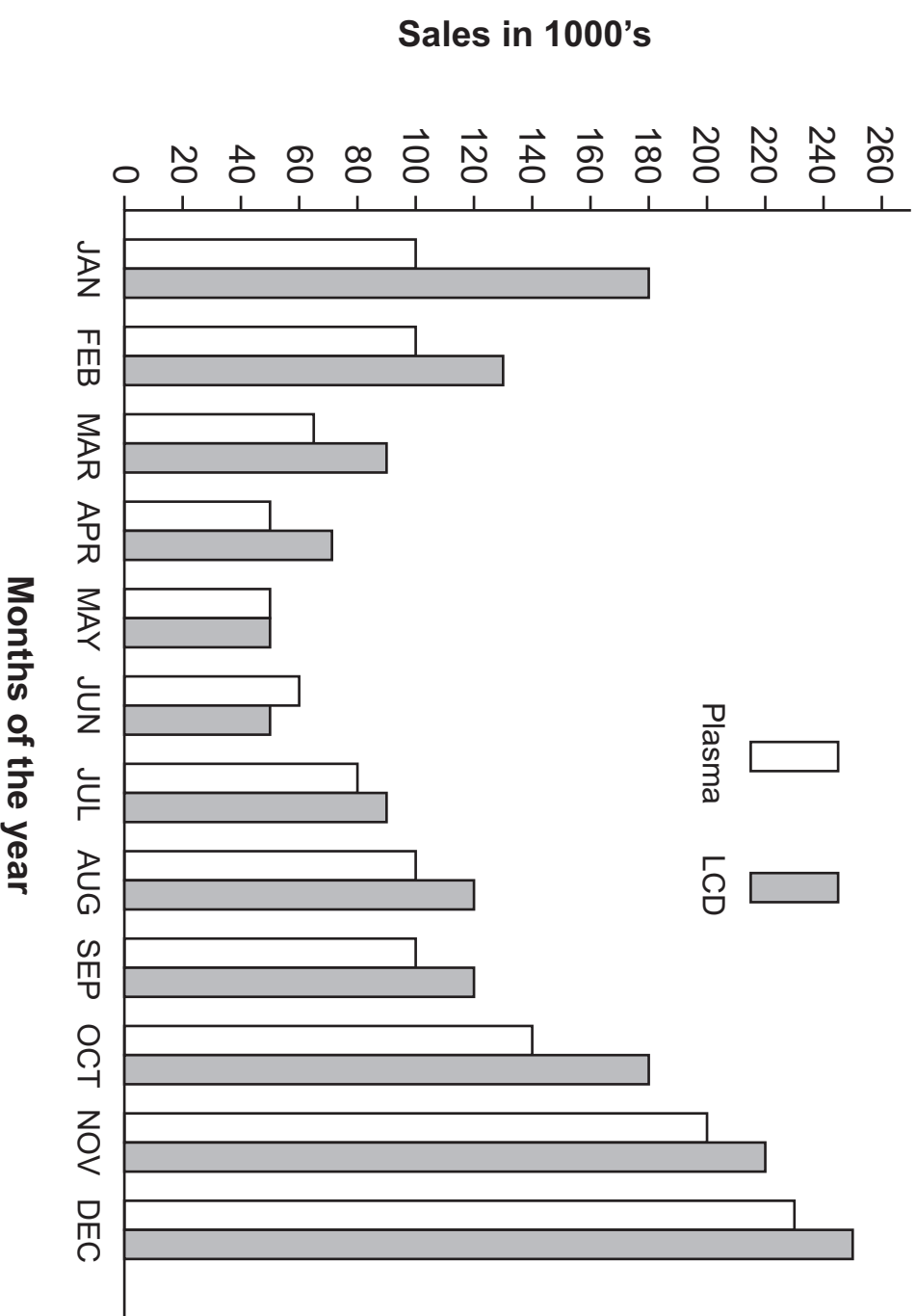
Total (KI 9)



A bar chart showing the sales of Plasma and LCD televisions is given.

Plasma and LCD TV Sales

- (a) State the name given to this type of chart.
Name
KI 1
- (b) State the month that had the most Plasma TV sales.
Month
KI 1
- (c) State the number of months in which Plasma and LCD sales were equal.
Number of months
KI 1
- (d) State the month that had the most sales of LCD TVs.
Month
KI 1
- (e) State the month that the sales of LCD TVs equalled 220,000.
Month
KI 1
- (f) State the number of months that Plasma TV sales equalled 100,000.
Number of months
KI 1
- Total (KI 6)**

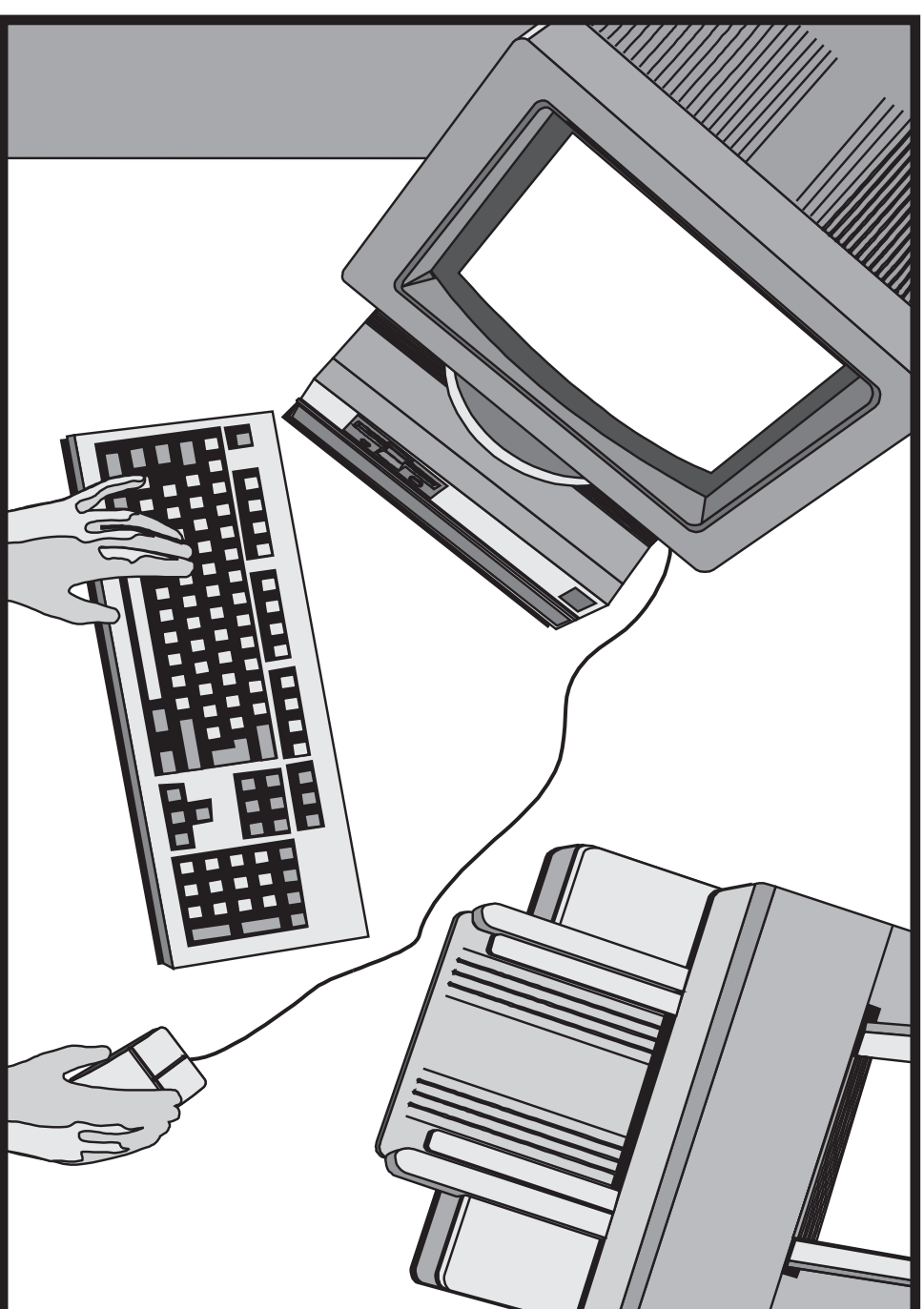


A company now uses computers instead of manual methods for all its graphics needs.

Complete the table below by indicating with a tick (✓) whether the factors given below are an advantage or a disadvantage.

Factors	Advantage	Disadvantage
The speed with which a designer produces drawings.		
The speed with which a designer can change mistakes.		
The cost of buying new computers.		
The need to train staff in the use of computers.		
A library of commonly used parts.		
Storage of drawings takes up less space.		
Possible data loss.		
Greater accuracy of drawings.		

Total (KI 8)



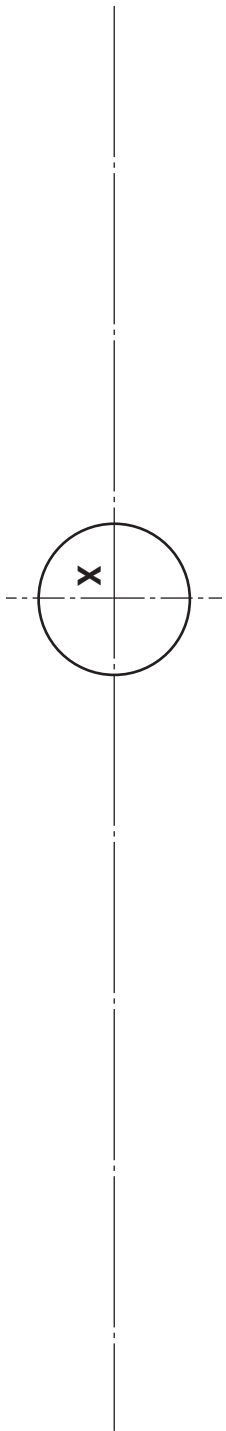
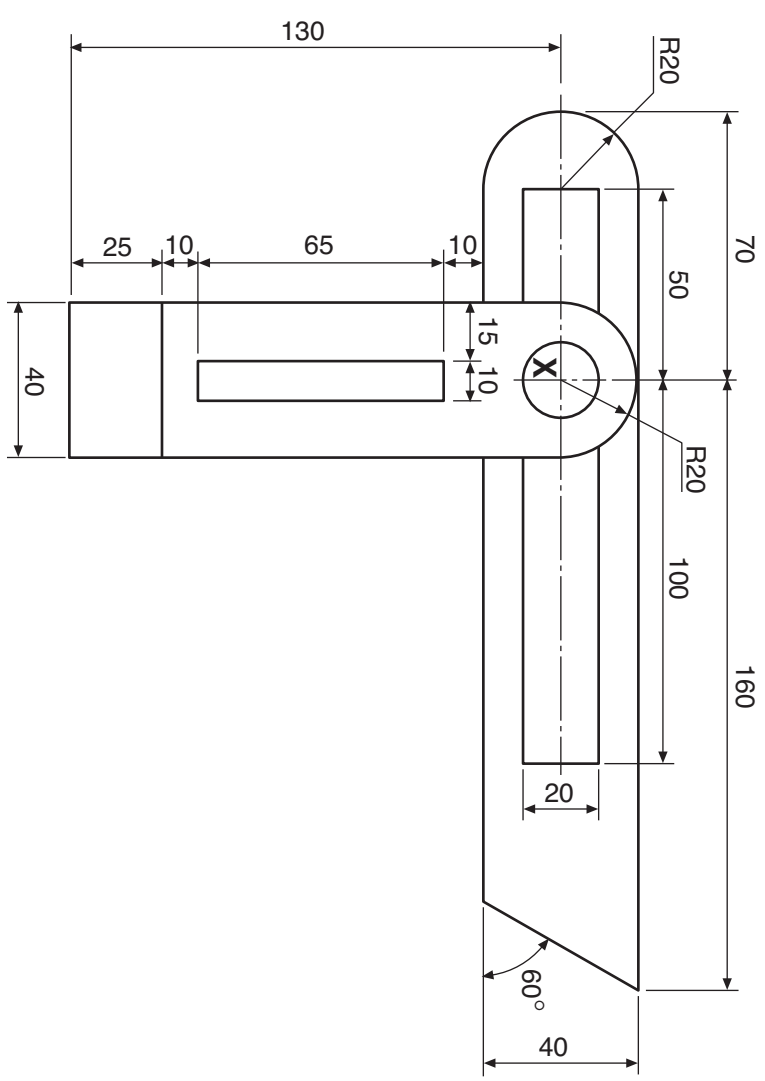
A dimensioned drawing of a sliding bevel is shown.

Draw full size the sliding bevel to the given dimensions.

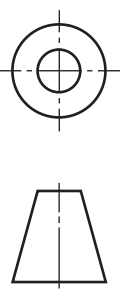
The position of circle **X** is given as a start.

Do not show dimensions.

Total (DA 12)



a	
b	
c	
d	
e	
f	
g	
h	
i	
j	
k	
l	
m	
n	

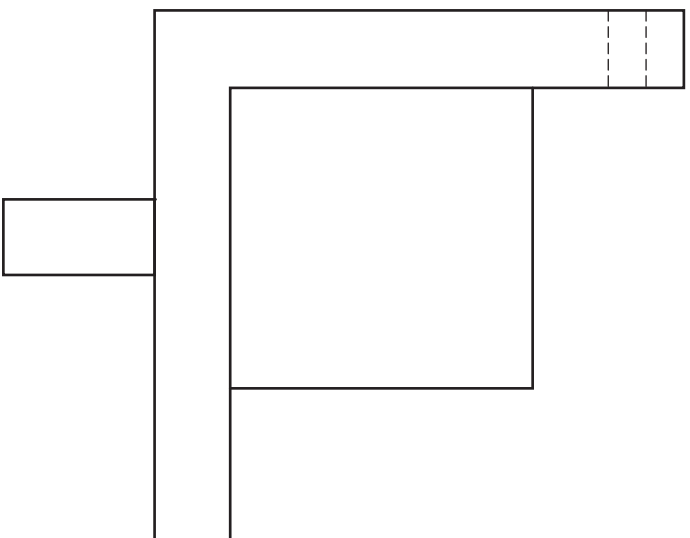


The end elevation and plan of a cupboard lock are given. A pictorial view is also shown.

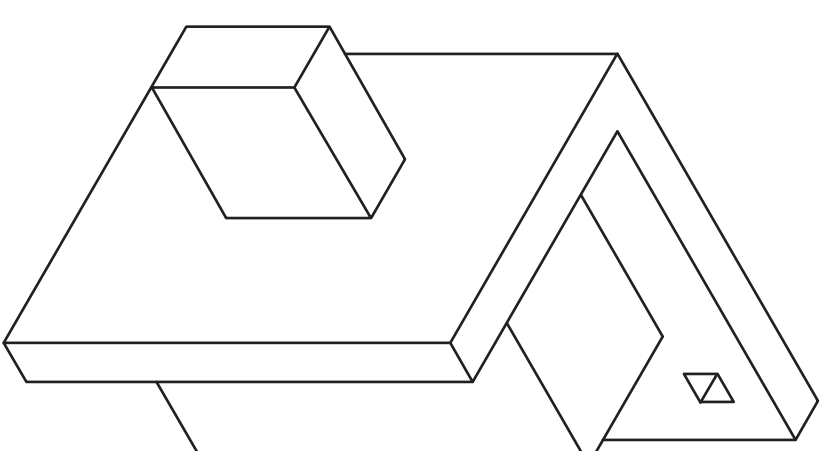
Draw the elevation projected from the plan and end elevation.

Show all hidden detail.

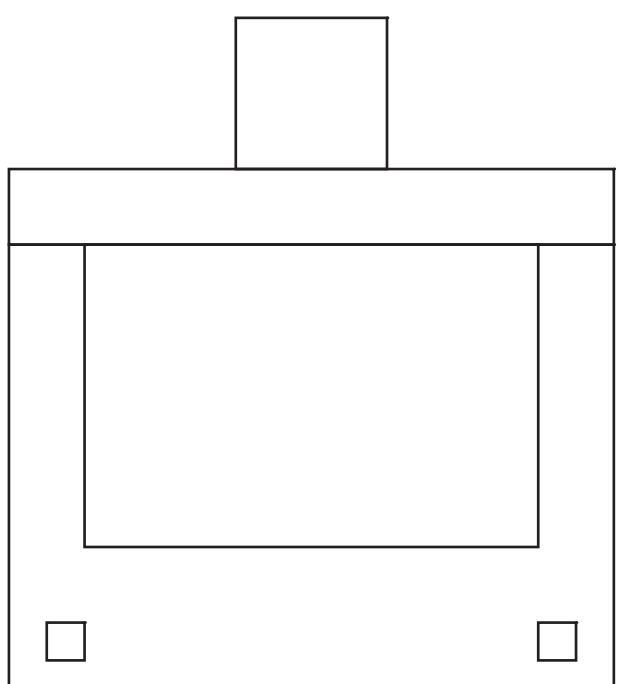
Total (DA 8)



PLAN



PICTORIAL VIEW
(NOT TO SCALE)



END ELEVATION

<i>a</i>	
<i>b</i>	
<i>c</i>	
<i>d</i>	
<i>e</i>	
<i>f</i>	
<i>g</i>	
<i>h</i>	
<i>i</i>	
<i>j</i>	
<i>k</i>	
<i>l</i>	
<i>m</i>	
<i>n</i>	

ELEVATION



[1330/401]

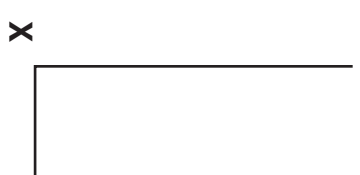
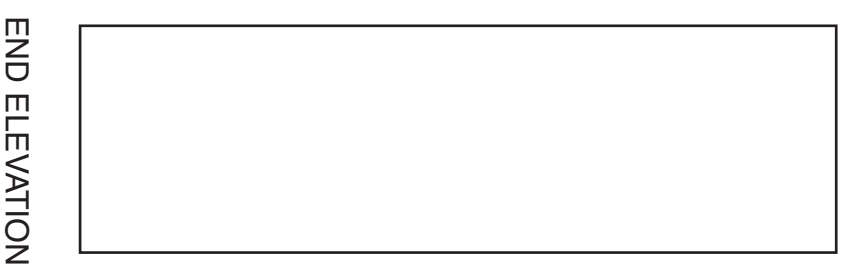
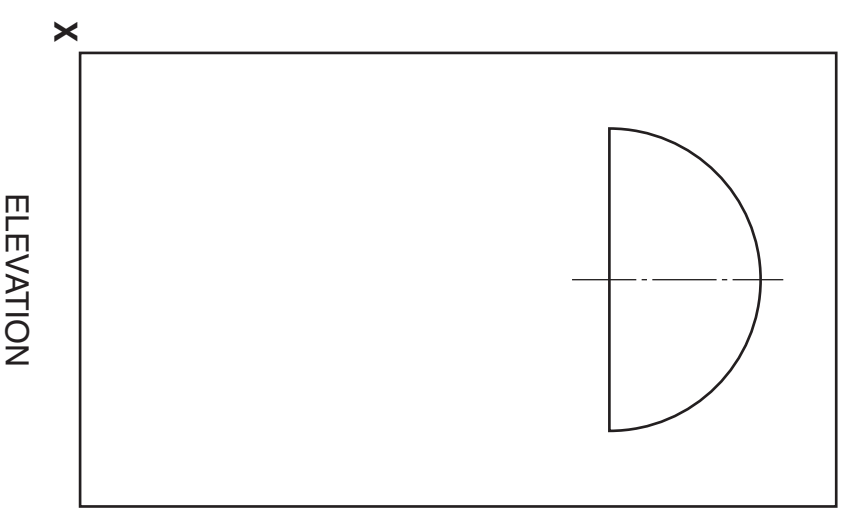
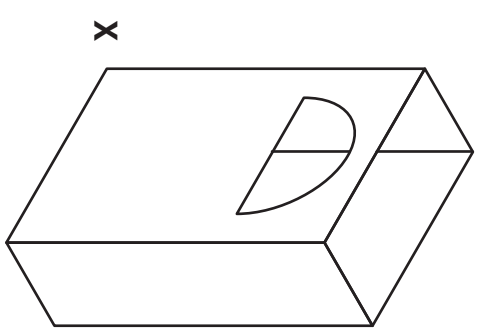
A pictorial view of a spice box is shown.

The elevation and end elevation are also given.

Draw the development of the sides of the box, including the base.

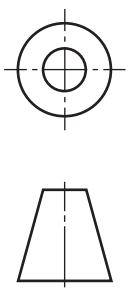
Use X as the starting point.

Total (DA 10)



DEVELOPMENT

a	
b	
c	
d	
e	
f	
g	
h	
i	
j	
k	
l	
m	
n	



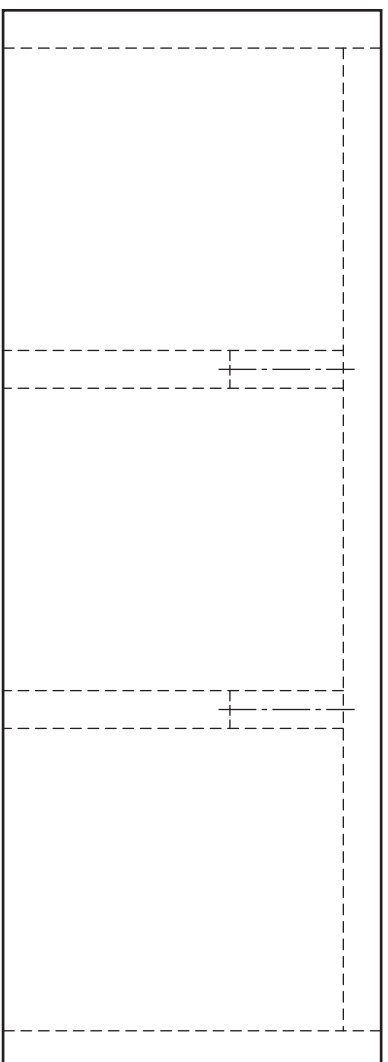
The elevation, end elevation and plan of a wall mounted hat and coat rack are given.

Draw a full size isometric view of the rack, using corner X as a start.

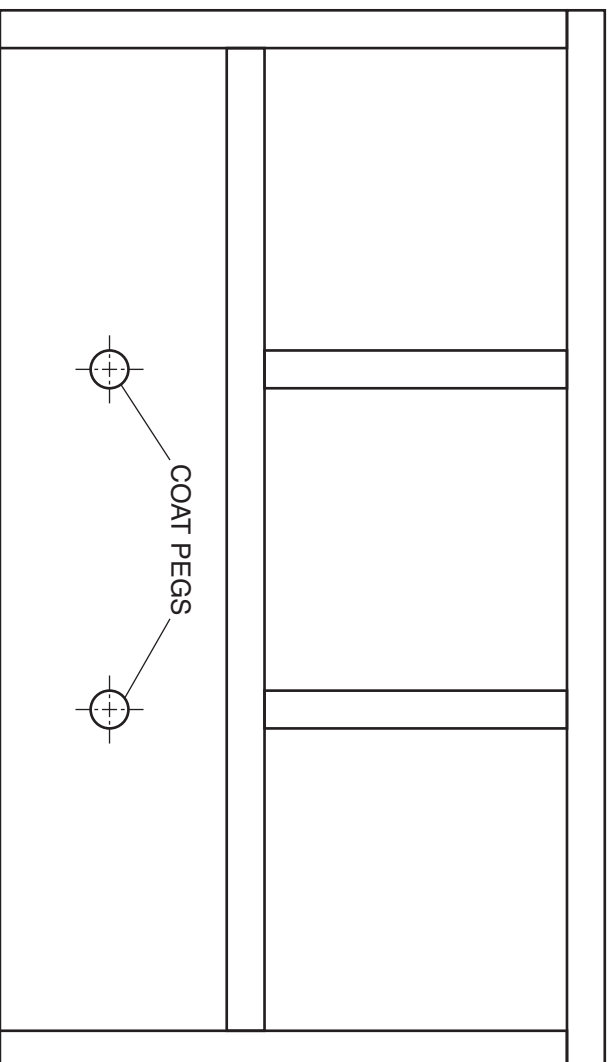
Do not show the coat pegs.

Do not show hidden detail.

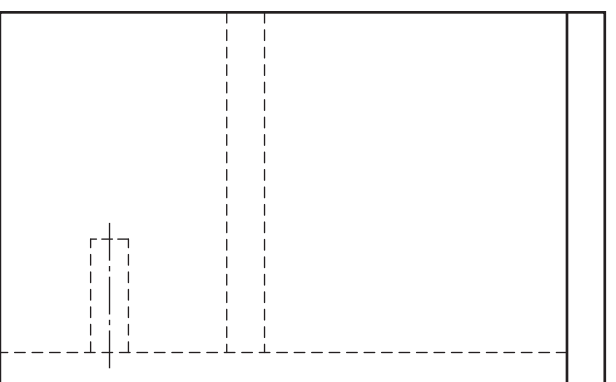
Total (DA 10)



PLAN



ELEVATION

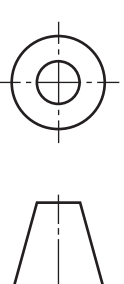


END ELEVATION



ISOMETRIC VIEW

a	
b	
c	
d	
e	
f	
g	
h	
i	
j	
k	
l	
m	
n	



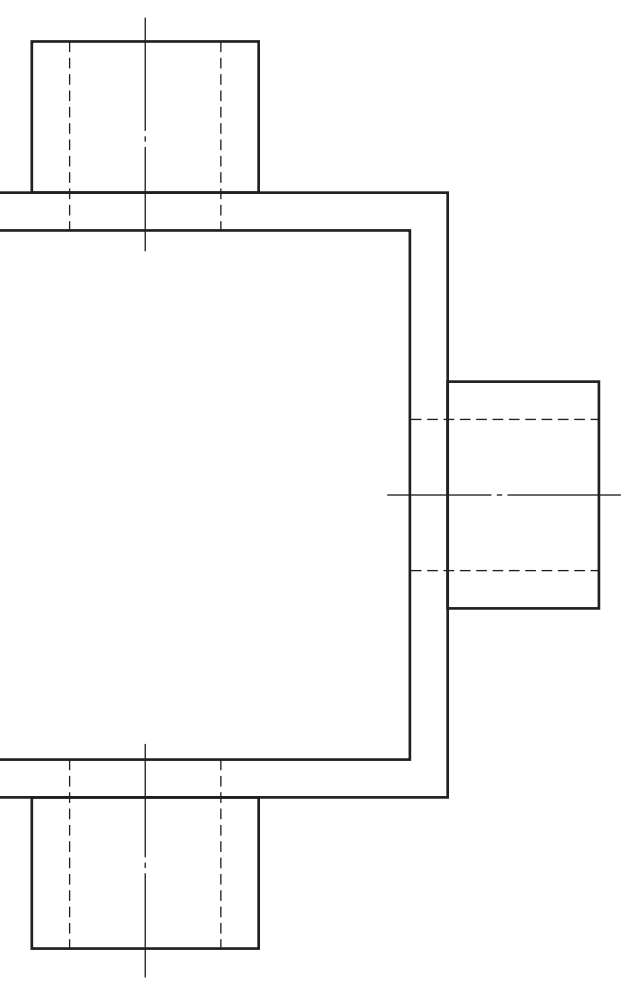
A pictorial view of a conduit box is shown.

The elevation and plan are also given.

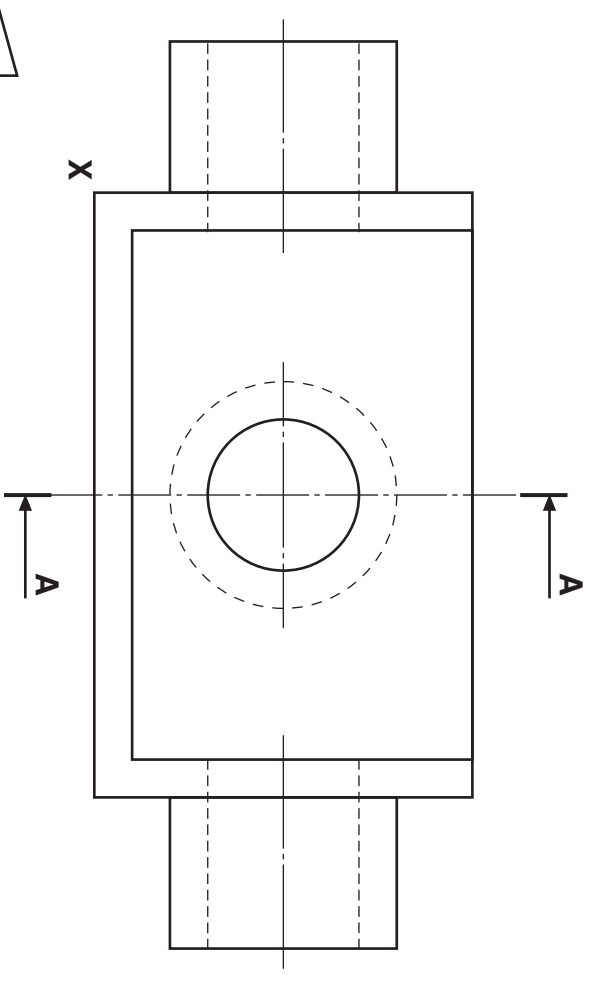
Draw a sectional end elevation on **A-A** in the position given.

Do not show hidden detail.

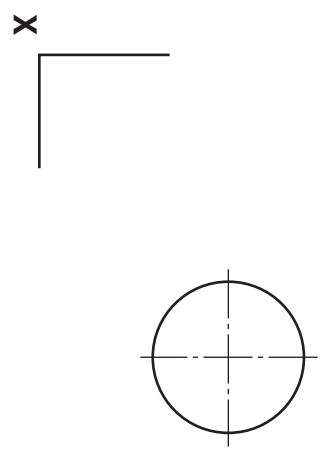
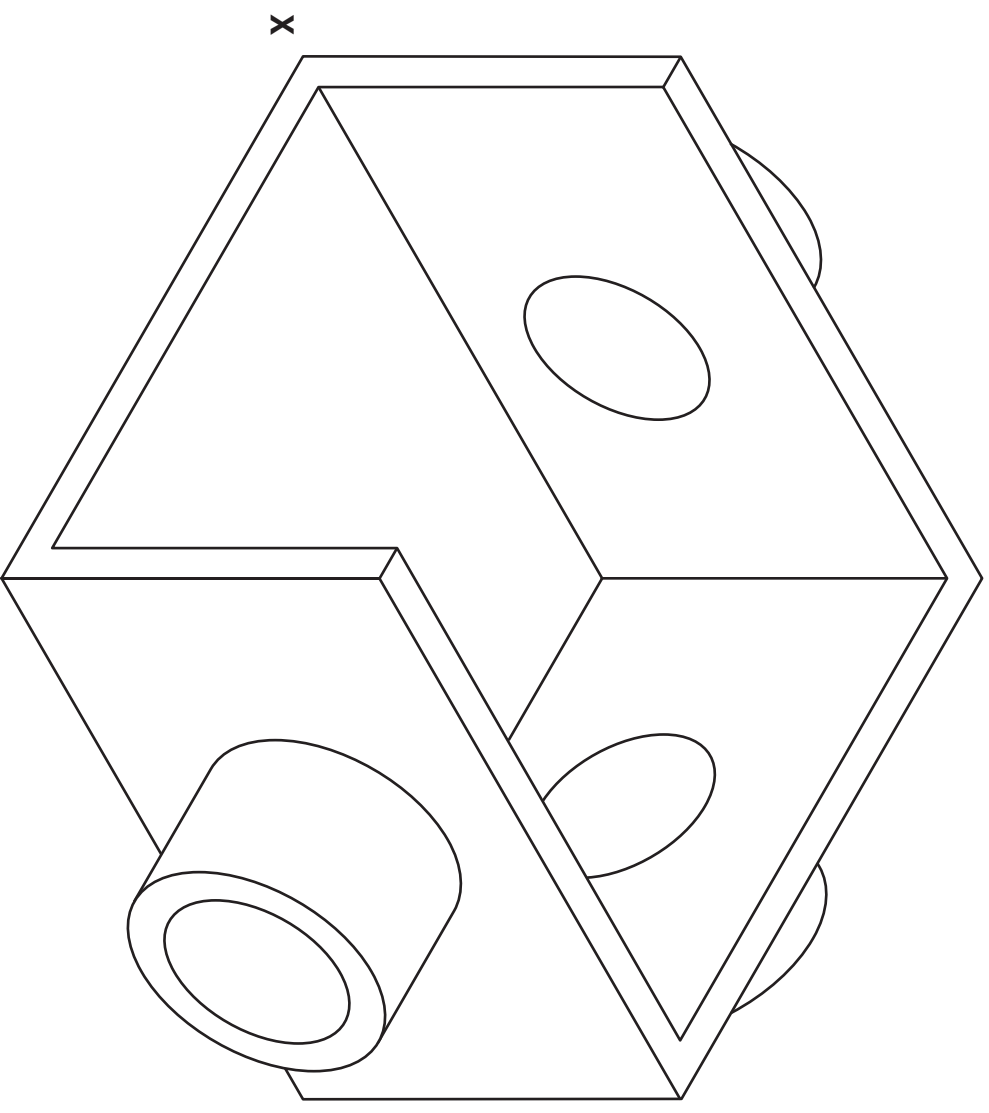
Total (DA 10)



PLAN



ELEVATION



SECTIONAL END ELEVATION ON A-A

a	
b	
c	
d	
e	
f	
g	
h	
i	
j	
k	
l	
m	
n	

[BLANK PAGE]