

STAPLE HERE

FOR OFFICIAL USE

--	--	--	--	--	--	--	--

**1330/401**

NATIONAL QUALIFICATIONS 2009  
FRIDAY, 22 MAY  
9.00 AM – 10.15 AM

GRAPHIC COMMUNICATION  
STANDARD GRADE  
Foundation Level

Fill in these boxes and read what is printed below.

Full name of centre				Town											
<input type="text"/>				<input type="text"/>											
Forename(s)				Surname											
<input type="text"/>				<input type="text"/>											
Date of birth				Scottish candidate number				Number of seat							
Day	Month	Year													
<input type="text"/>	<input type="text"/>	<input type="text"/>	<input type="text"/>	<input type="text"/>	<input type="text"/>	<input type="text"/>	<input type="text"/>	<input type="text"/>	<input type="text"/>	<input type="text"/>	<input type="text"/>	<input type="text"/>	<input type="text"/>	<input type="text"/>	<input type="text"/>

80 marks are allocated to this paper: KI 30 marks  
DA 50 marks

- 1 Answer **all** questions.
- 2 Read each question carefully before you answer.
- 3 Written answers may be in **ink or pencil**.
- 4 Drawings and sketches **must be in pencil**.
- 5 Sketches need only be in line form—**do not spend time rendering**.
- 6 Dimensions are given in millimetres or as stated.
- 7 Orthographic drawings are in third angle projection.
- 8 For each question, the element being tested and the mark allocation are shown in brackets, eg (DA 5) means a question on Drawing Abilities worth 5 marks.
- 9 **At the end of the examination**

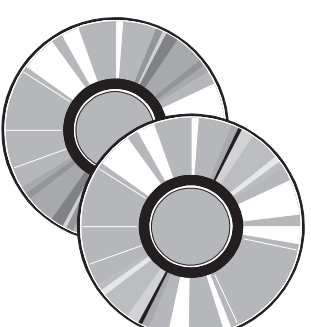
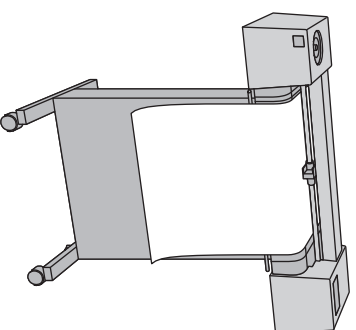
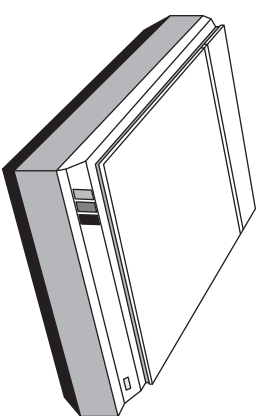
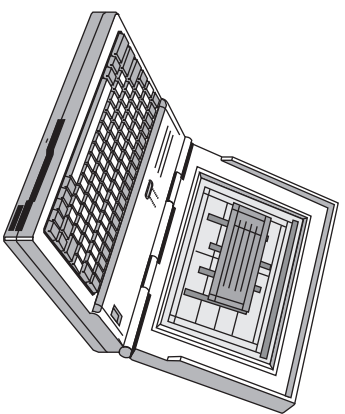
check that your name is on every sheet;  
put the sheets in correct numerical order;  
place this sheet on top of the others;  
join all sheets together by **stapling** at the top left-hand corner;  
before leaving the examination room, you must give these sheets to the invigilator (if you do not you may lose all the marks for this paper).

	KI	DA
1		
2		
3		
4		
5		
6		
7		
8		
9		
Total Marks		



[BLANK PAGE]

Pupils working on their Illustration and Presentation Folios commonly use the following hardware devices and software packages.



(a) A list of computer software packages is given.

**List of Software packages**

- DTP
- ILLUSTRATION/PAINT
- WORD PROCESSING
- 2-D CAD

Using the above list, select the software packages that would be used in the following situations.

SITUATION	SOFTWARE USED
Produce an orthographic drawing with dimensions	
Produce a display with text and graphics	
Produce a computer generated illustration	

KI 3

(b) A list of hardware devices is given.

**List of Hardware devices**

- INKJET PRINTER
- PLOTTER
- KEYBOARD
- SCANNER

Using the above list, select the hardware devices that would be used in the following situations.

SITUATION	HARDWARE USED
Obtain a hard copy of an orthographic drawing	
Input text	
Copy a manual drawing to the computer's memory	

KI 3

Total (KI 6)

When working on an illustration it is important to know some colour theory.

(a) In the table below, indicate with a tick (✓) which colours are primary, secondary or tertiary.

COLOUR	PRIMARY	SECONDARY	TERTIARY
Yellow			
Violet			
Blue-Green			
Blue			
Yellow-Orange			
Green			

KI 6

(b) Using the colour wheel

(i) State **one** colour that is in harmony with blue.

Colour .....

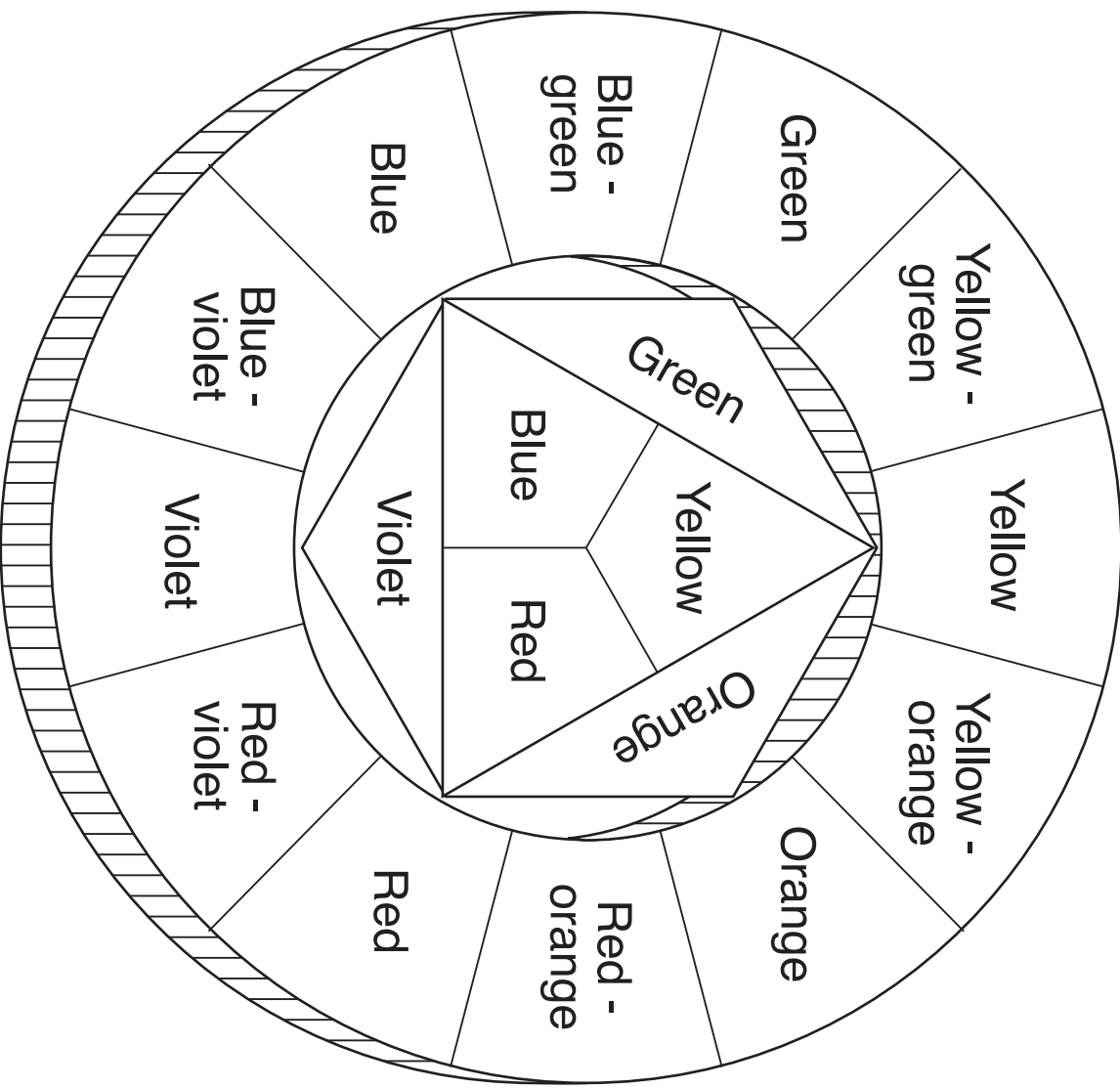
(ii) State **one** colour that is in contrast with blue.

Colour .....

(iii) State what must be added to a colour to make it a tint of that colour.

Answer .....

KI 3  
Total (KI 9)

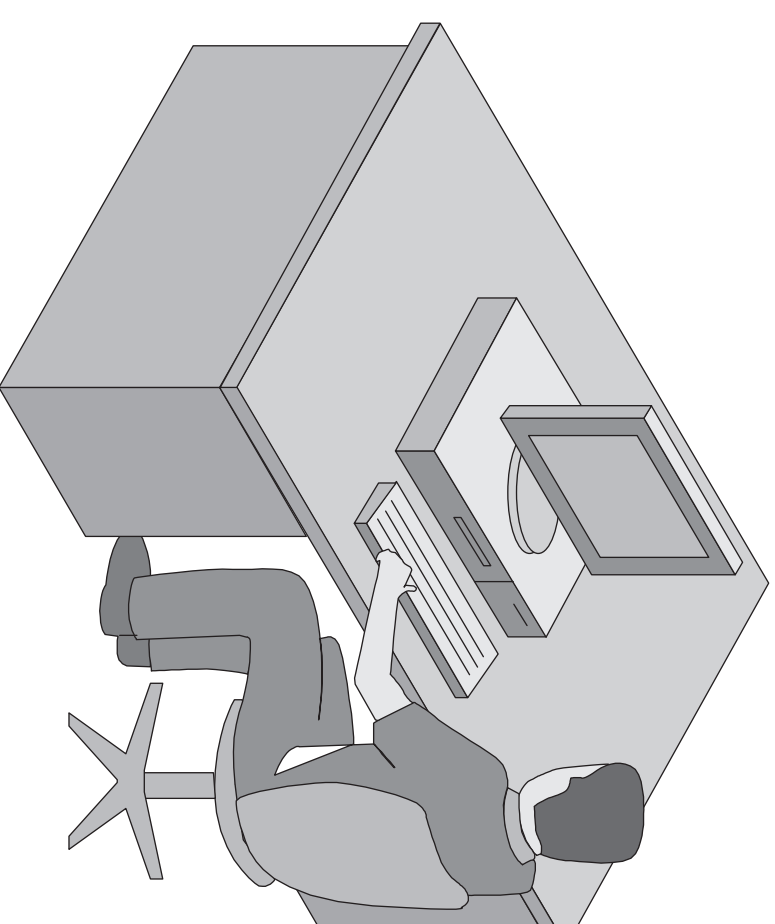


COLOUR WHEEL

Study the following table and tick (✓) whether the statement is an advantage or disadvantage of CAG.

STATEMENT	ADVANTAGE	DISADVANTAGE
The speed with which mistakes can be changed		
The need to train staff in the use of computers		
The cost of updating the software packages used		
The ability to create a library of commonly used parts		
The fact that the storage of drawings takes up less space		
The possible loss of data		
The greater accuracy of drawings		
The speed with which new drawings are produced		

**Total (KI 8)**



An orthographic and a pictorial drawing showing different line types are given.

Dimension
Hidden
Hatching
Cutting plane
Outline

**Table of line types**

- (a) Complete the table by adding the names of the line types shown at 1, 2, 3, 4 and 5. The five line types are given in the table above.

Number	Line Type
1	
2	
3	
4	
5	

**KI 5**

- (b) State the type of pictorial view shown in **View Y**.

**View Y** .....

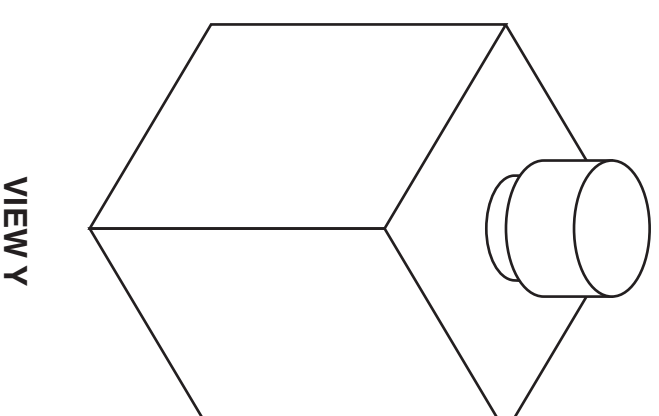
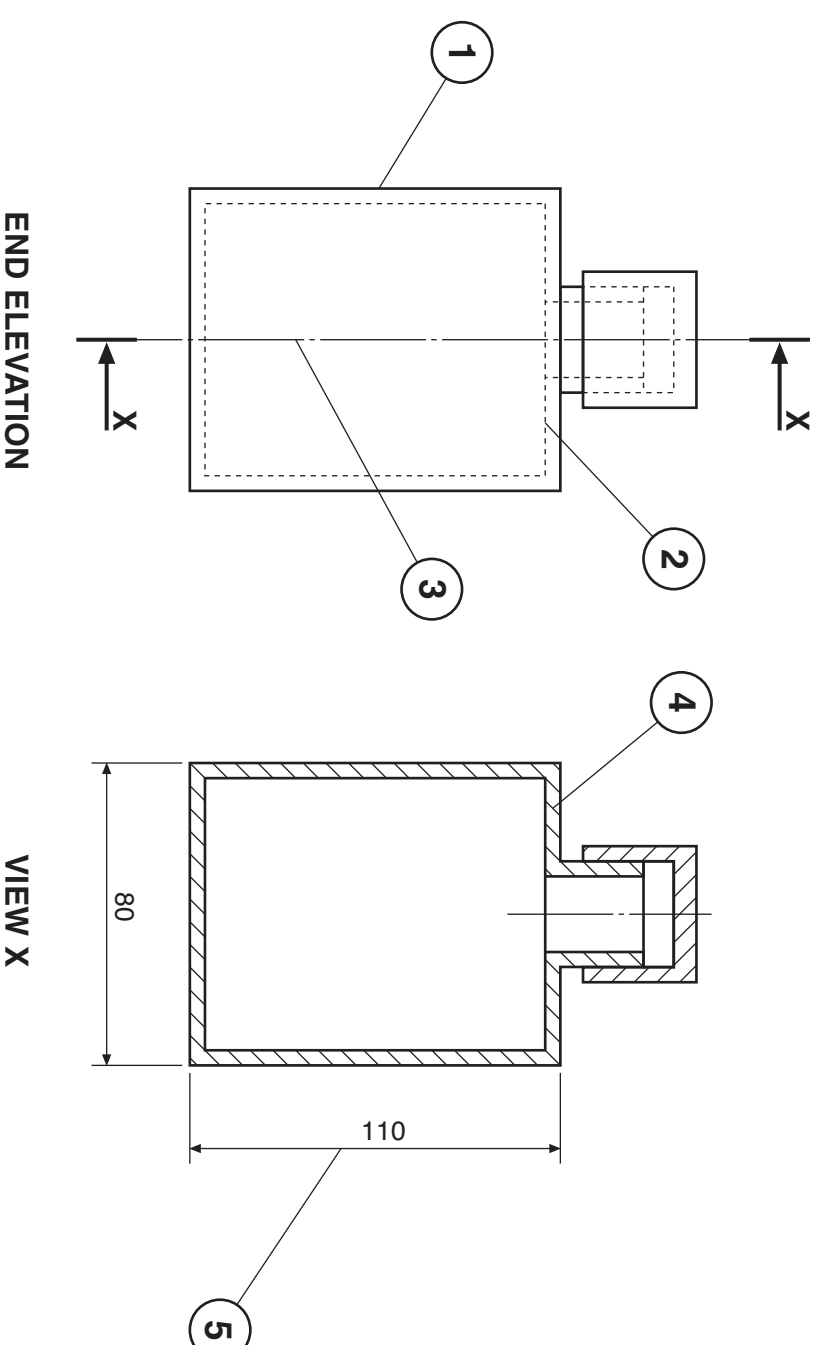
**KI 1**

- (c) State the name of **one** other type of pictorial drawing.

Answer .....

**KI 1**

**Total (KI 7)**



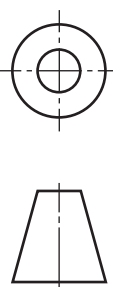
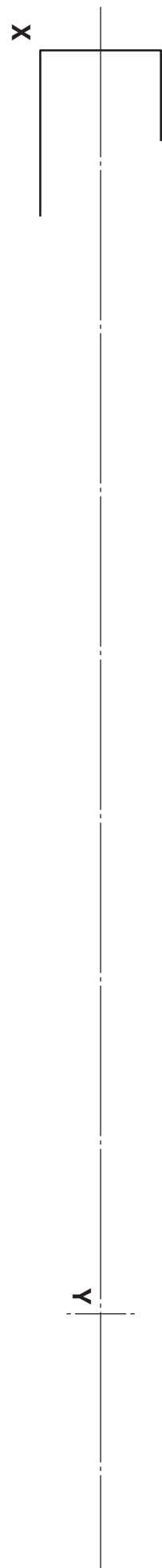
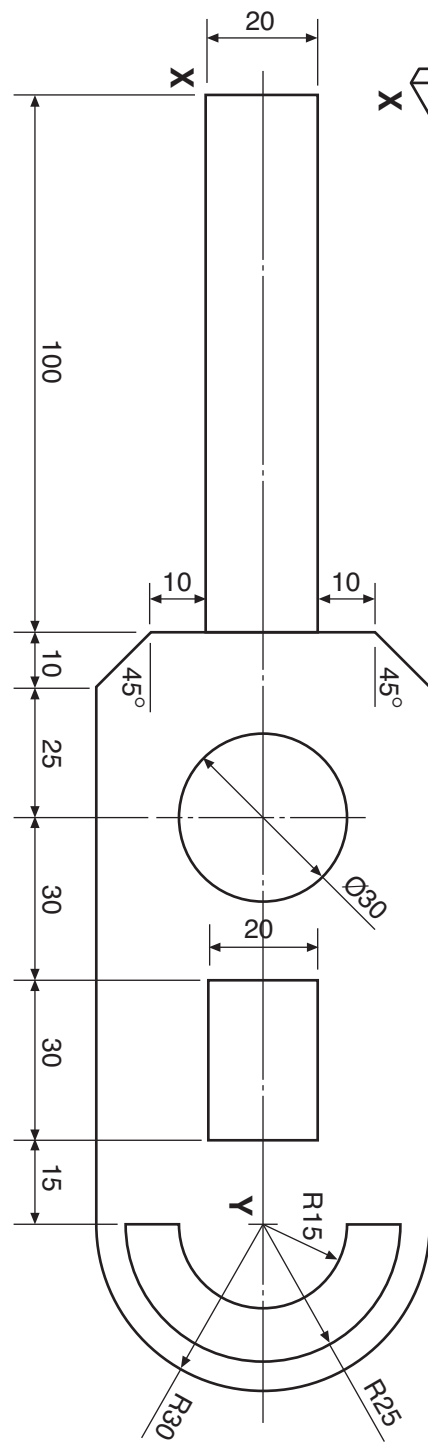
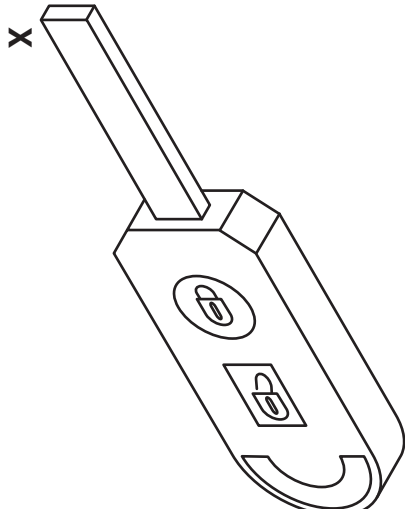
A dimensioned drawing and a pictorial view of a car key are shown.

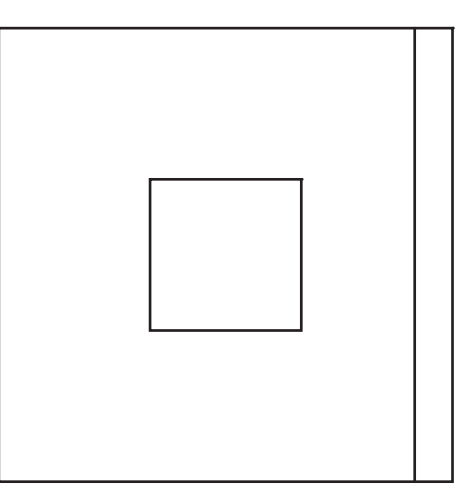
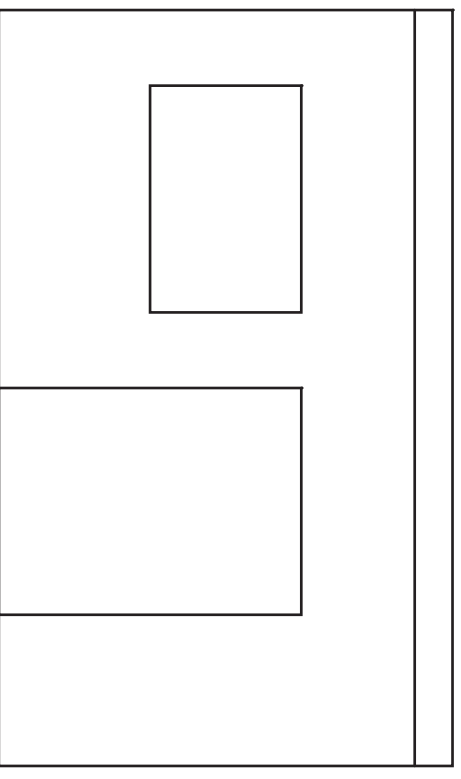
Draw the car key to the given sizes.

Part of the key and the position of X and Y are given as a start.

Do not show dimensions.

Total (DA 12)

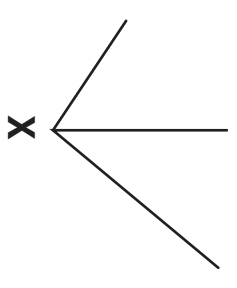




[1330/401]

ELEVATION

END ELEVATION



The elevation and end elevation of a shed are given.

**Sketch** a two point perspective view of the shed, using the vanishing points **VP1** and **VP2** and the given start **X**.

**Do not show hidden detail.**

**A straight edge may be used.**

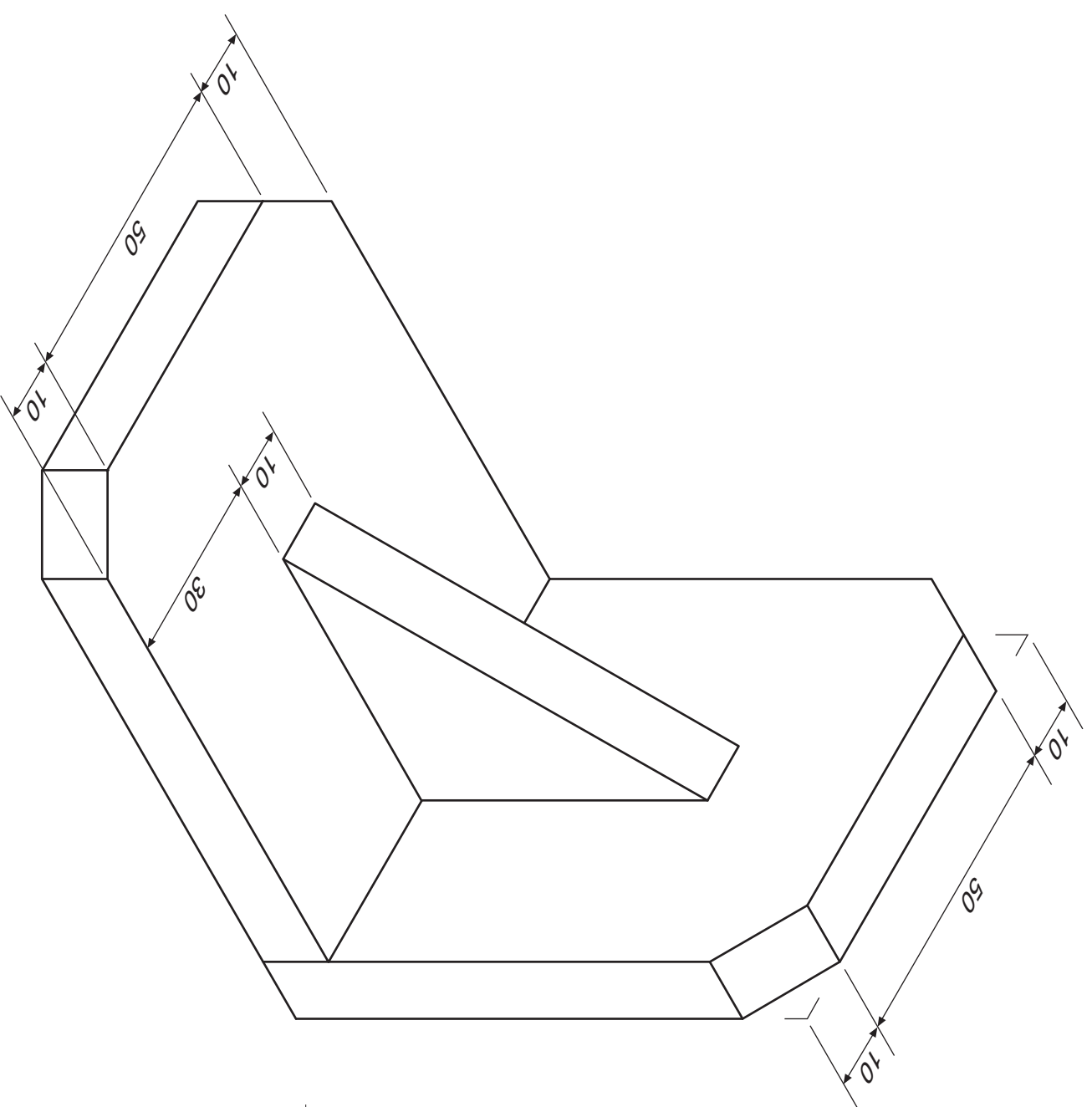
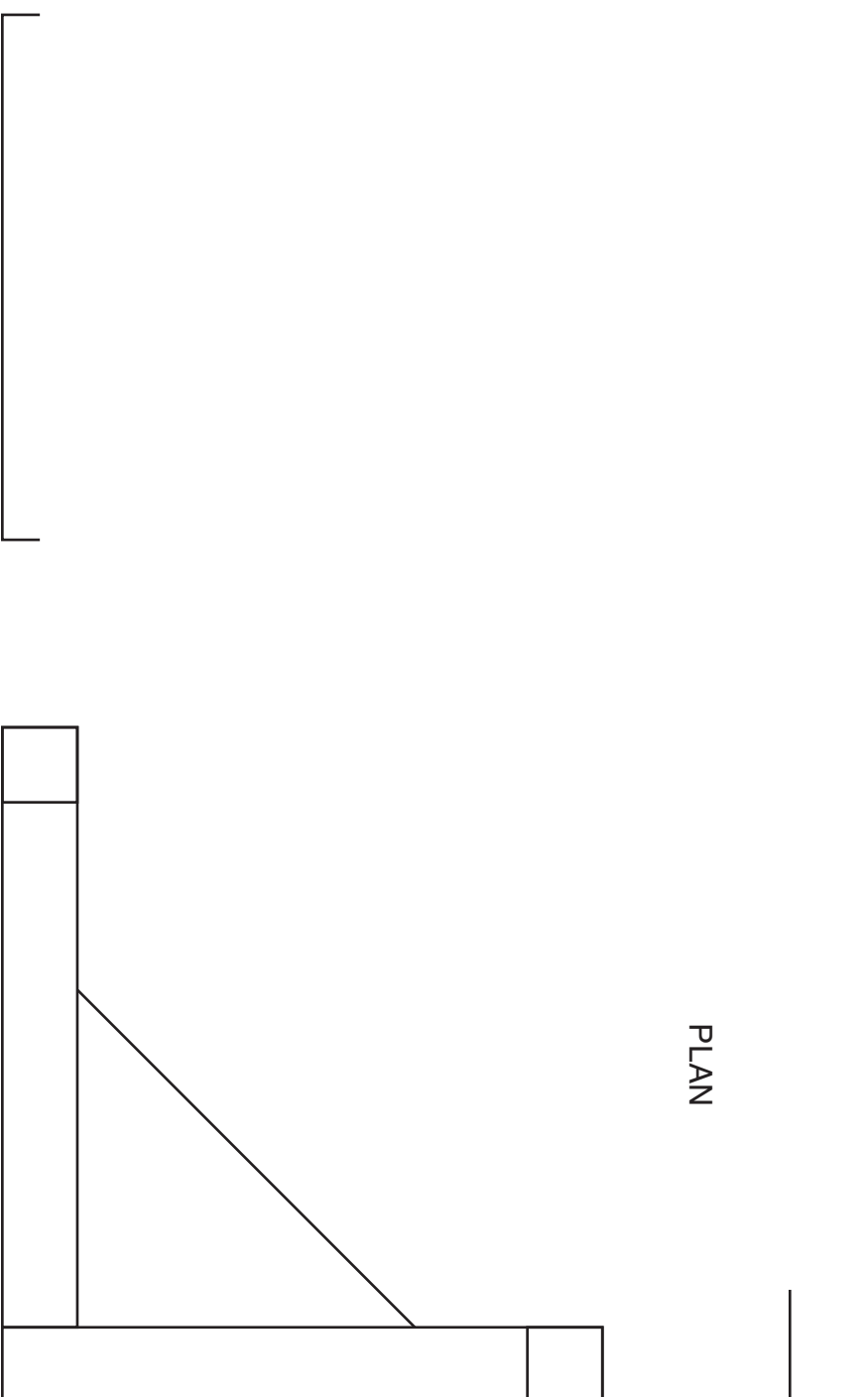
**Total (DA 8)**



END ELEVATION

ELEVATION

PLAN



The elevation of a bookend is given.

A pictorial view is also shown.

**Draw**, using the given sizes:

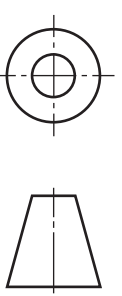
(a) the end elevation in the position indicated;

(b) the plan projected from the elevation.

DA5

DA5

Total (DA 10)



A pictorial view of a CCTV camera with casing is shown. The elevation and plan of the casing are also given.

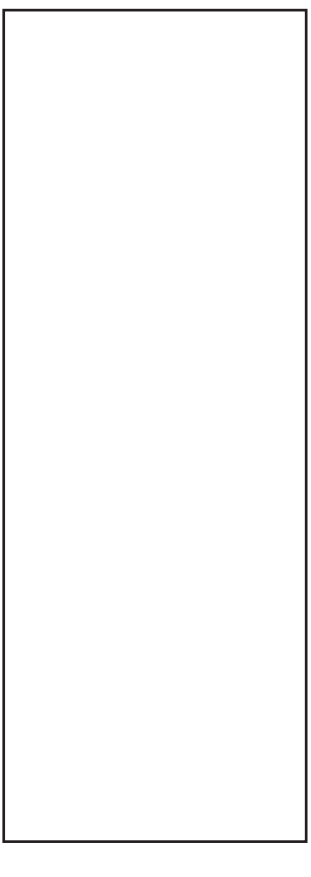
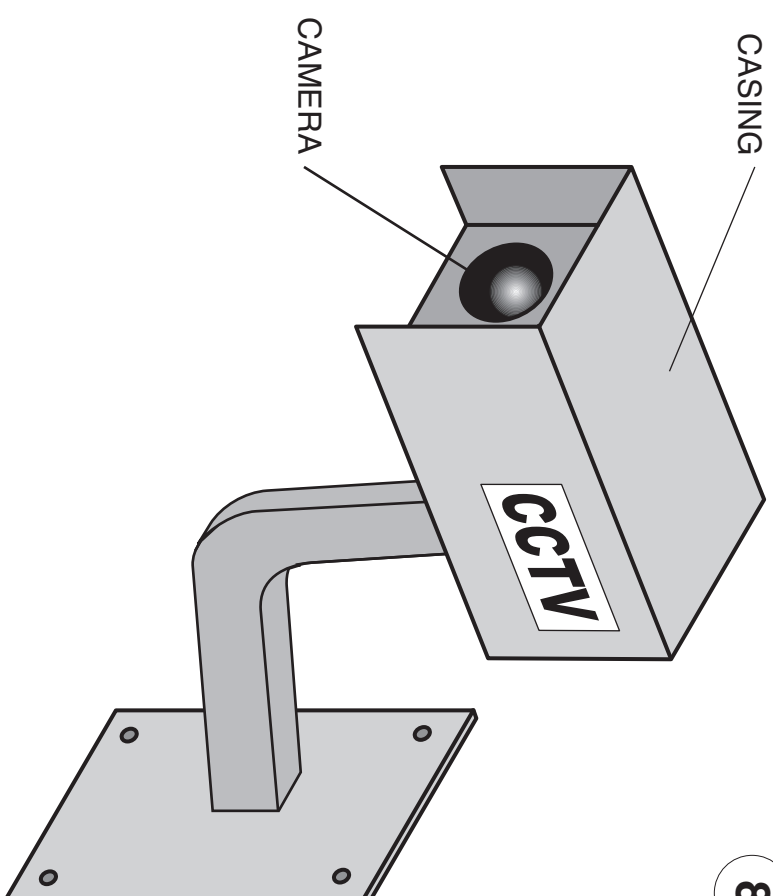
**Draw:**

- (a) the end elevation of the casing;
- (b) the development of the two sides and top of the casing, using the given start **X**.

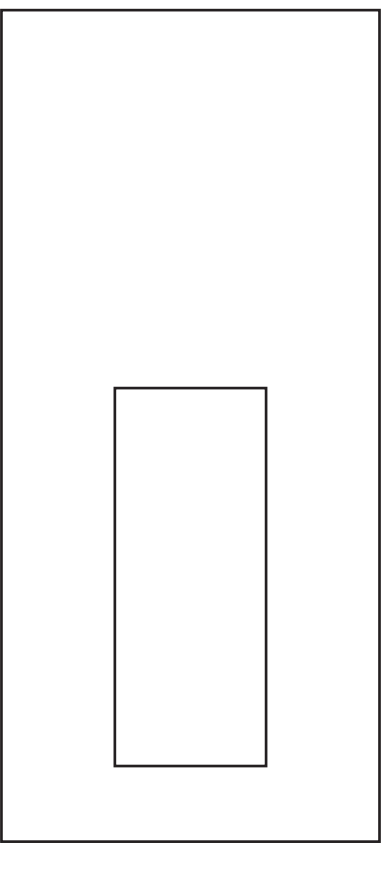
DA 2

DA 8

Total (DA 10)



PLAN

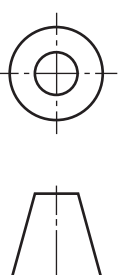


ELEVATION

END ELEVATION



DEVELOPMENT OF SIDES

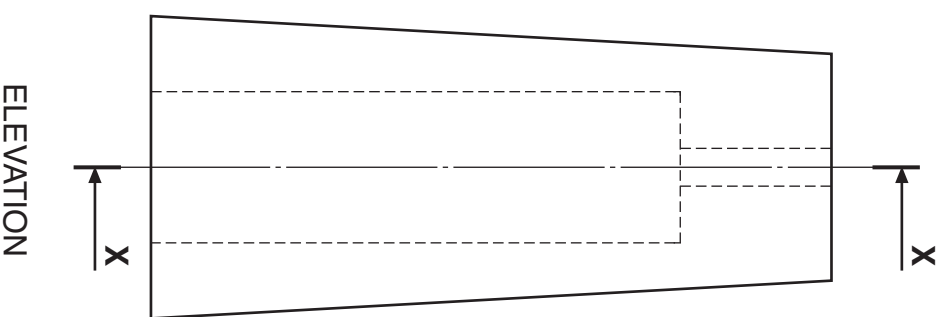
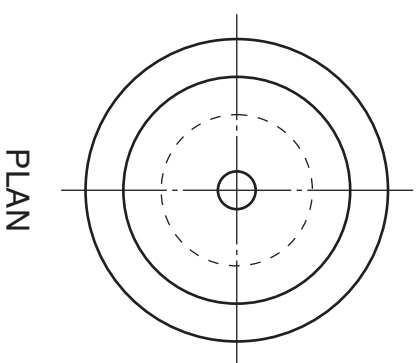


The elevation and plan of a toggle used at the end of a pull cord switch are given. A pictorial view is also shown.

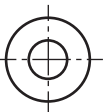
For the toggle, **draw** the sectional end elevation on **X-X**.

**Do not show hidden detail.**

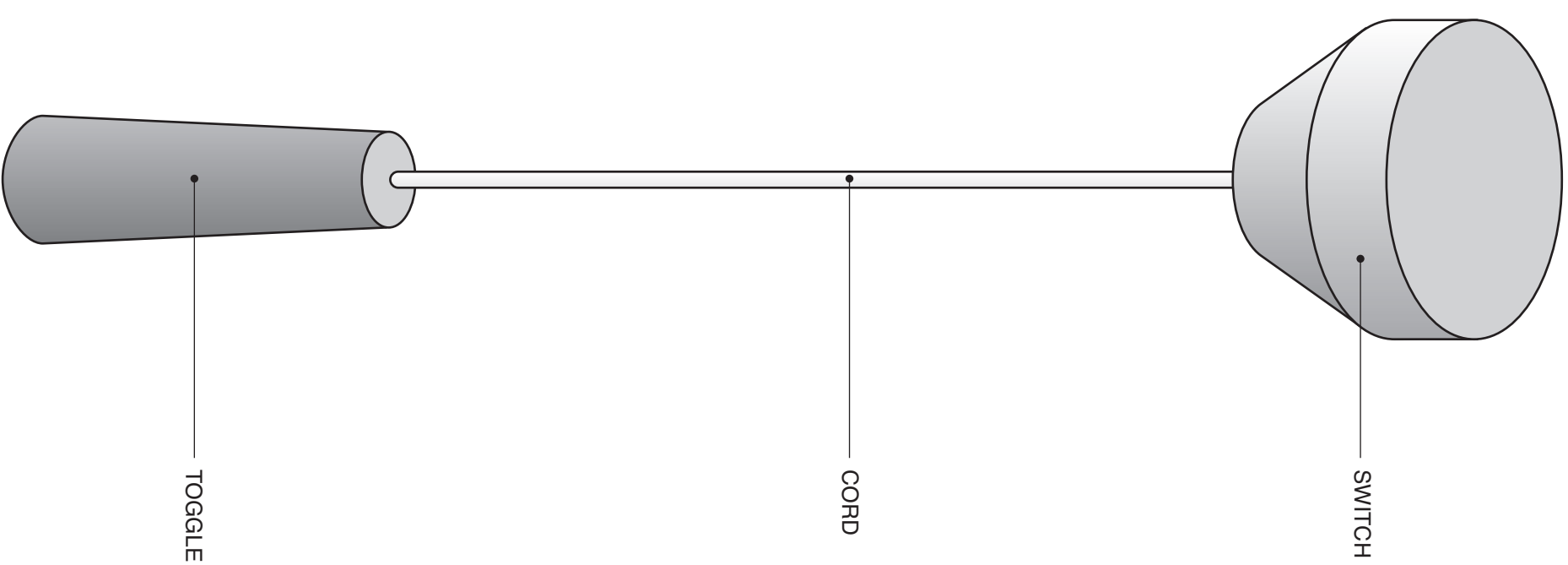
**Total (DA 10)**



SECTIONAL END ELEVATION ON X-X



[1330/401]



[END OF QUESTION PAPER]

Candidate's Name \_\_\_\_\_

[BLANK PAGE]