

STAPLE HERE

FOR OFFICIAL USE

--	--	--	--	--	--

X033/201

NATIONAL QUALIFICATIONS 2011 WEDNESDAY, 1 JUNE 1.00 PM – 3.30 PM GRAPHIC COMMUNICATION INTERMEDIATE 2

Fill in these boxes and read what is printed below.

Full name of centre				Town						
<input type="text"/>				<input type="text"/>						
Forename(s)				Surname						
<input type="text"/>				<input type="text"/>						
Date of birth		Scottish candidate number				Number of seat				
Day	Month	Year								
<input type="text"/>	<input type="text"/>	<input type="text"/>	<input type="text"/>	<input type="text"/>	<input type="text"/>	<input type="text"/>	<input type="text"/>	<input type="text"/>	<input type="text"/>	<input type="text"/>

70 marks are allocated to this paper

- 1 Answer all questions.
- 2 Read each question carefully before you answer.
- 3 Written answers may be in ink or pencil.
- 4 Drawings and sketches must be in pencil.
- 5 Dimensions are given in millimetres or as stated.
- 6 Orthographic drawings are in third angle projection.

At the end of the examination

check that your name is on every sheet;
put the sheets in correct numerical order;
place this sheet on top of the others;
join all sheets together by stapling at the top left-hand corner;
before leaving the examination room, you must give these sheets to the Invigilator
(if you do not you may lose all the marks for this paper).

Question	Marks
1	
2	
3	
4	
5	
6	
7	
8	
9	
Total Marks	

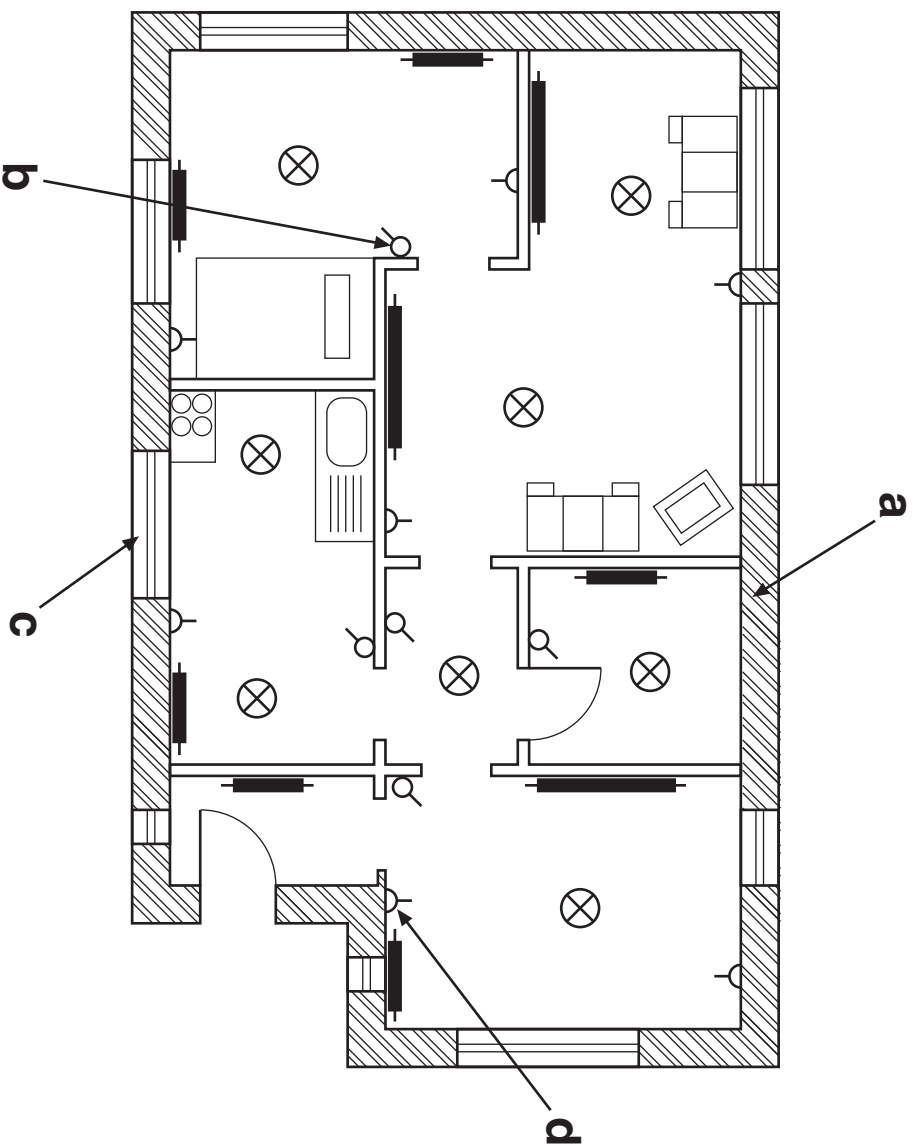


ACKNOWLEDGEMENT

Question 4—Logo and photograph of Mini Cooper are reproduced by kind permission of BMW Group UK.

1

A floorplan of a new house is shown below.
State the British Standard symbols shown at **a**, **b**, **c** and **d**.



- a (1)
- b (1)
- c (1)
- d (1)

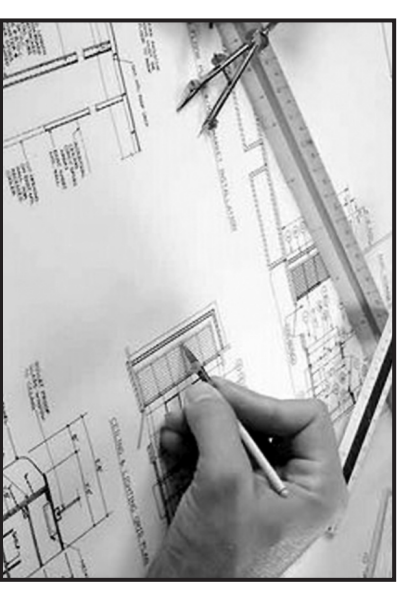
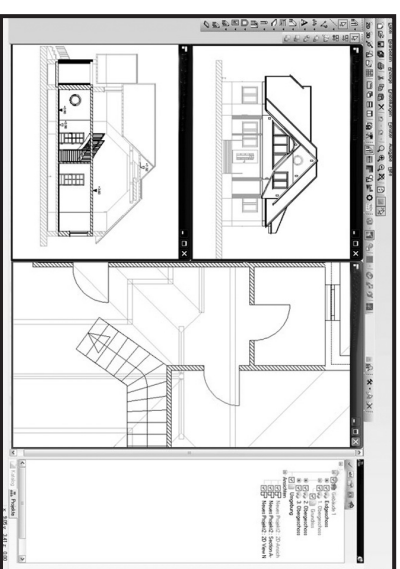
(4 marks)

2

Describe **three** advantages of using a CAD package over manual drawing methods in the production of architectural drawings.

- 1
- (1)
- 2
- (1)
- 3
- (1)

(3 marks)




Shown below are images of devices commonly used with Computer-Aided Drawing.

Indicate, using a tick, whether the product is an input device, output device or a storage device.

Input

Output


Storage



Input

Output

Storage



Input

Output

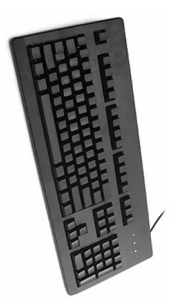
Storage



Input

Output

Storage



Input

Output


Storage



Input

Output

Storage



(6 marks)

(1)

(1)

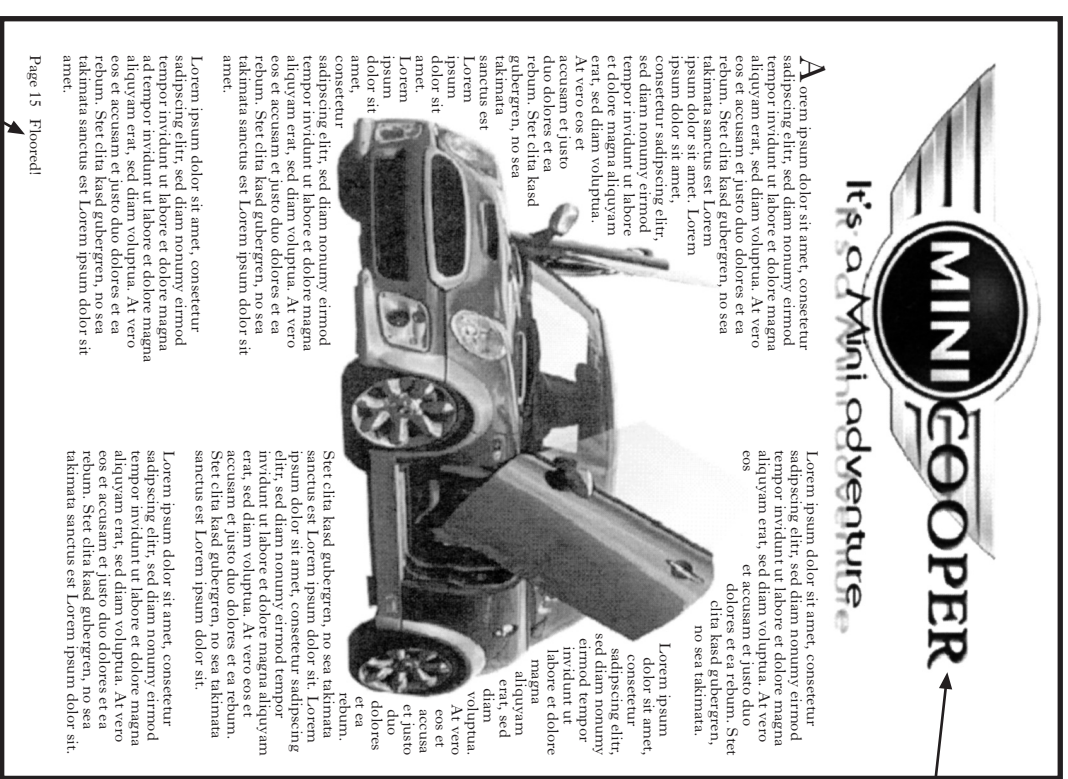
(1)

(1)

(1)

(1)

A page from a car magazine is shown below.



(a)

(b)

State the **two** Desktop Publishing features which are shown at (a) and (b).

(a)

(b)

(c) Annotate and label the graphic to show **two** additional Desktop Publishing features.

(4 marks)

A coffee shop is being refurbished, **green** has been used for the walls.

(a) State what effect this would have on the eating area.

.....

..... (1)

(b) State a colour that **harmonises** with the green on the walls.

..... (1)

(c) State a **contrasting** colour to the green walls which could be used for the serving area.

..... (1)

(d) The door is orange. What **two** primary colours are used to create this colour?

.....

..... (1)

(e) Explain what the term “advancing colour” means.

.....

..... (1)

(5 marks)

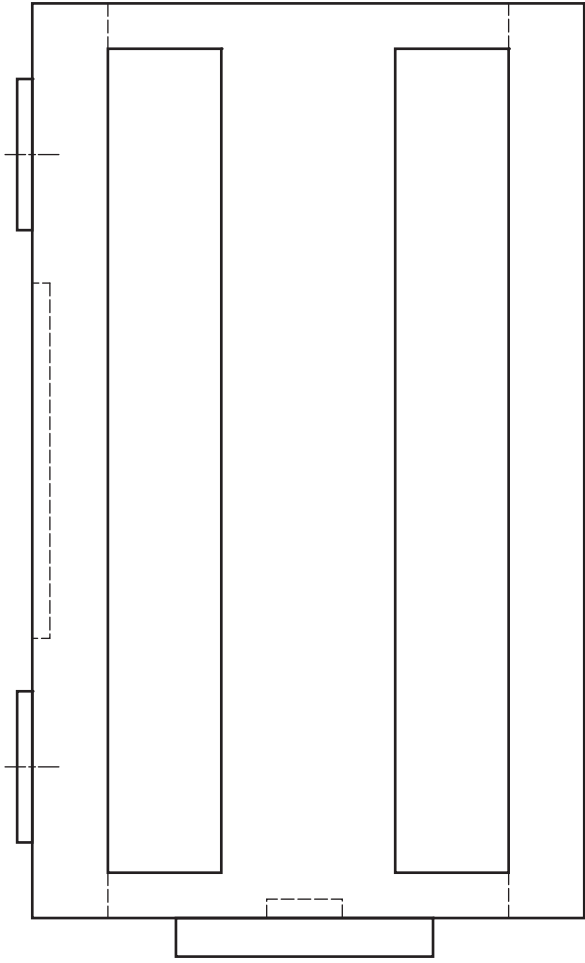


The elevation and plan of a toaster are given below. A pictorial view is also shown.

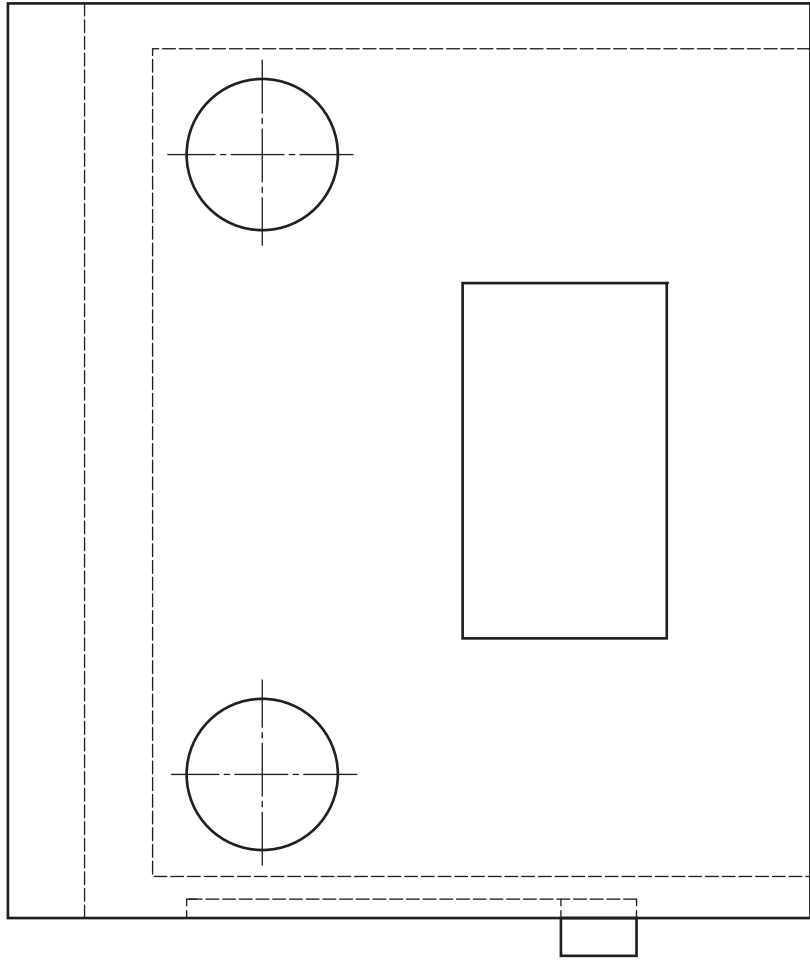
Draw, in the position indicated, the end elevation of the toaster.

Show all hidden detail.

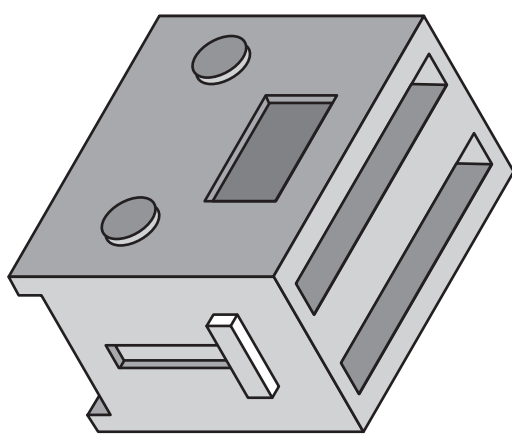
(8 marks)



Plan

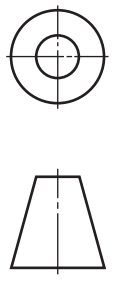


Elevation



Pictorial View

a	
b	
c	
d	
e	
f	
g	
h	
i	
j	
k	
l	
m	
n	



End Elevation

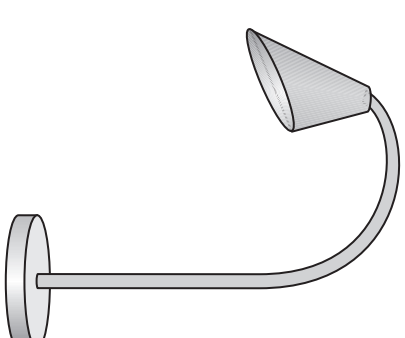
The elevation of a lampshade is given, a pictorial view is also shown.

Draw, in the position indicated:

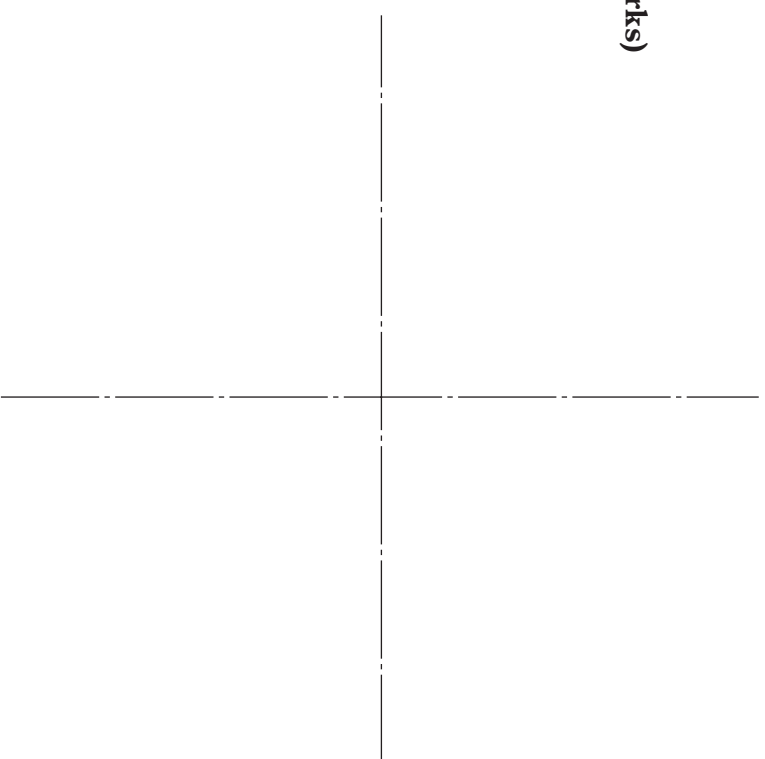
- (a) the complete plan;
- (b) the end elevation;
- (c) the development of the lampshade.

Show all hidden detail.

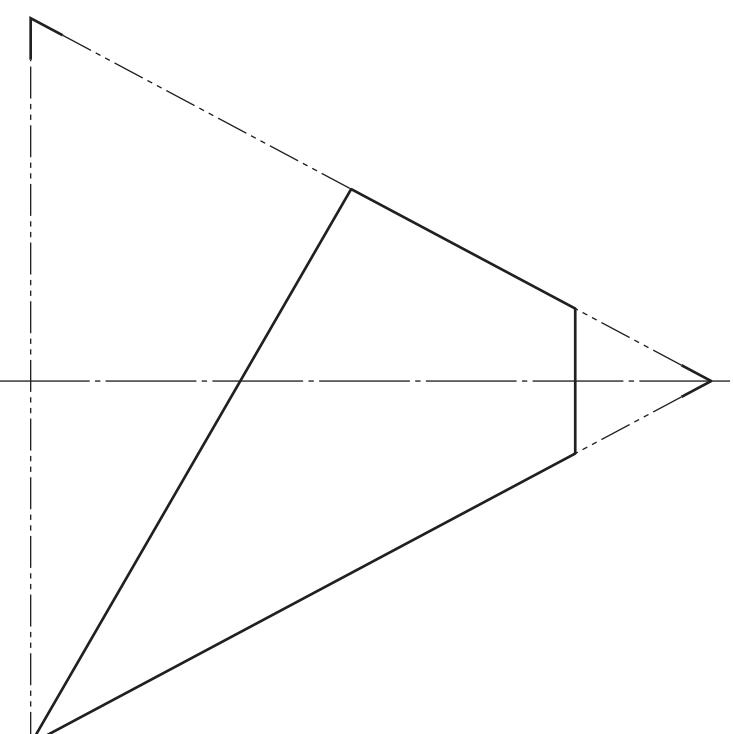
(13 marks)



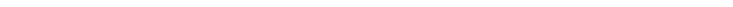
Pictorial View



Plan



Elevation



End Elevation

<i>a</i>	
<i>b</i>	
<i>c</i>	
<i>d</i>	
<i>e</i>	
<i>f</i>	
<i>g</i>	
<i>h</i>	
<i>i</i>	
<i>j</i>	
<i>k</i>	
<i>l</i>	
<i>m</i>	
<i>n</i>	

Development



Orthographic views of a coffee cup and saucer are given.

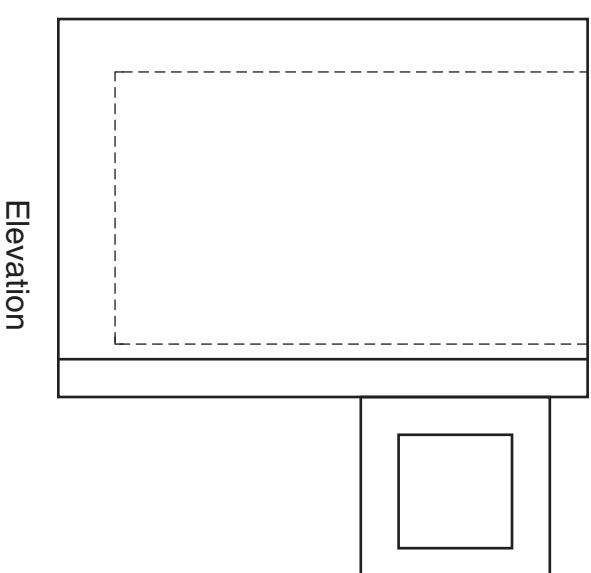
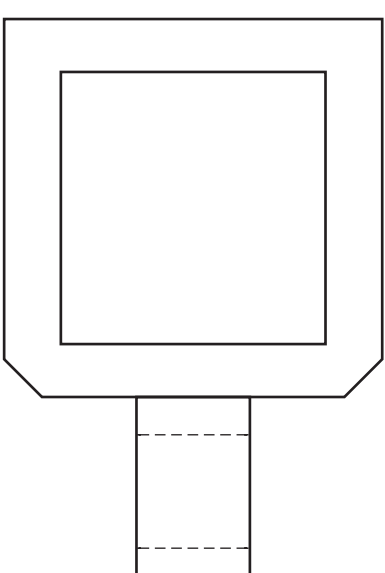
Draw an assembled isometric view of the cup and saucer, using starting position **X**.

Do not show hidden detail.

(14 marks)

Coffee Cup

Plan



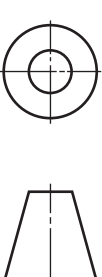
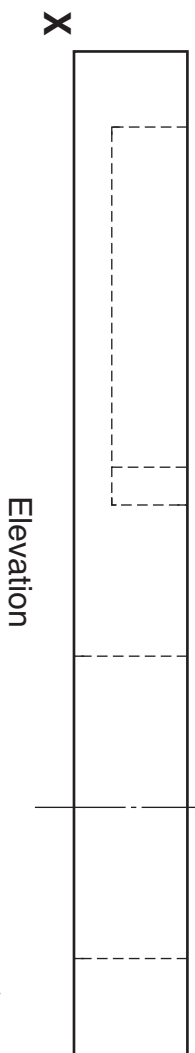
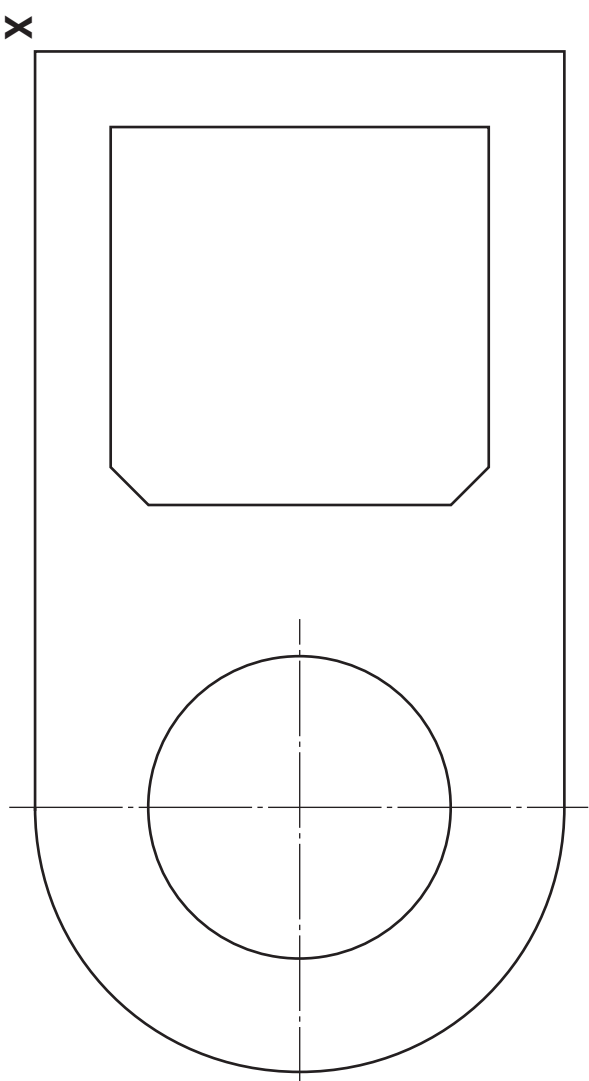
<i>a</i>	
<i>b</i>	
<i>c</i>	
<i>d</i>	
<i>e</i>	
<i>f</i>	
<i>g</i>	
<i>h</i>	
<i>i</i>	
<i>j</i>	
<i>k</i>	
<i>l</i>	
<i>m</i>	
<i>n</i>	



Isometric View

Saucer

Plan



9

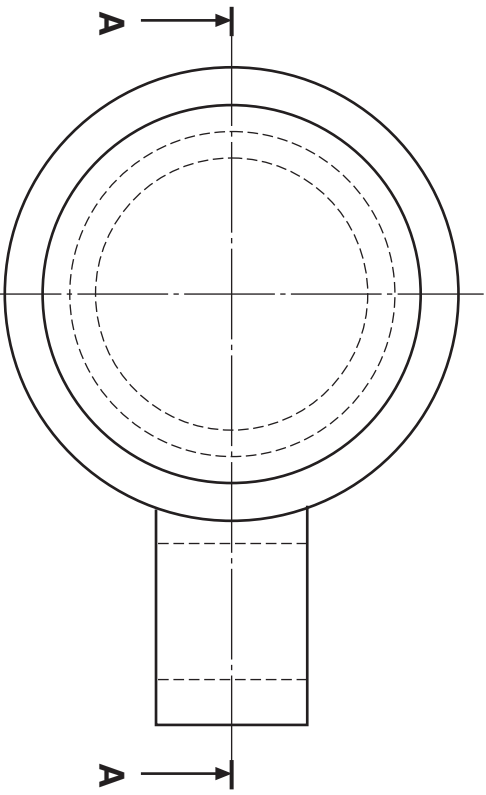
Orthographic views of three parts of a travel mug are given.

A pictorial view is also shown.

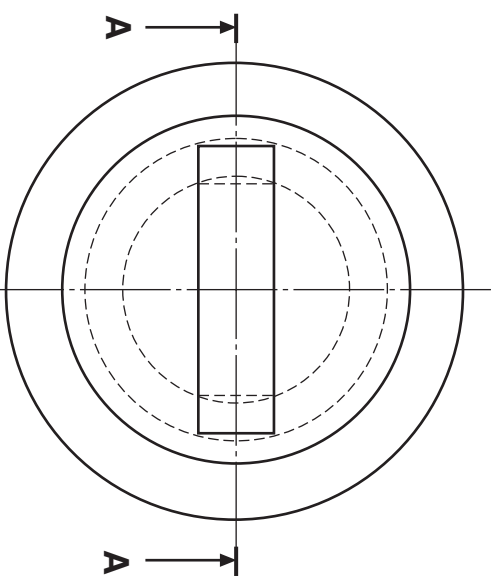
Draw, in the position indicated the sectional elevation on A-A of the assembled travel mug.

Do not show hidden detail.

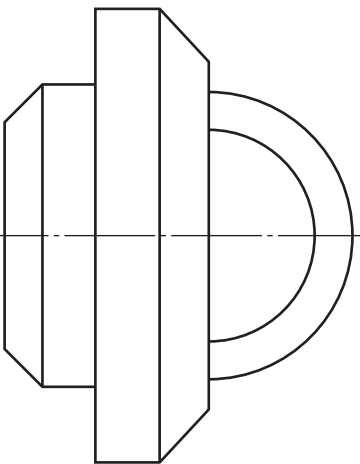
(13 marks)



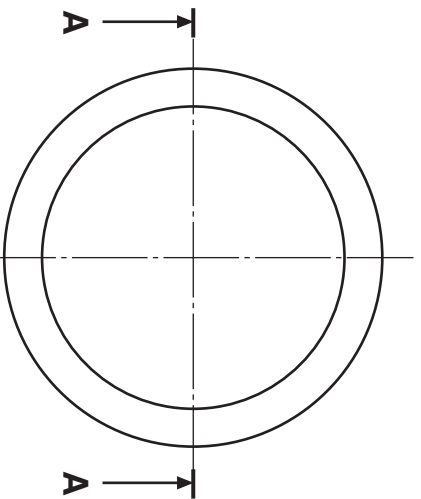
Main Body



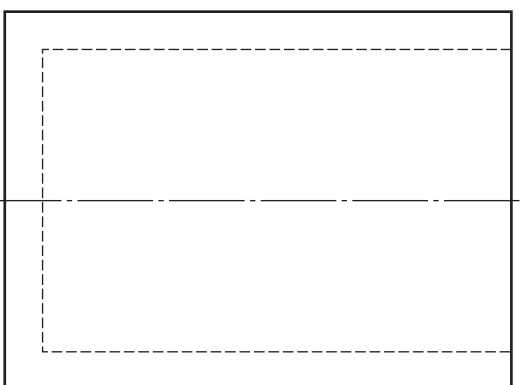
Lid



Elevation



Glass Inner

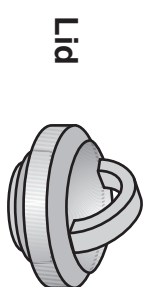


Plan

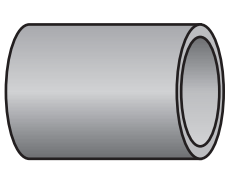
Elevation

Sectional Elevation on A-A

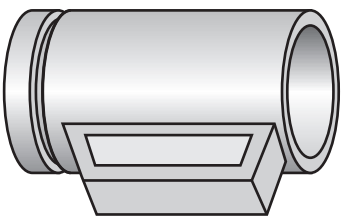
9



Lid

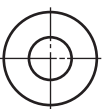


Glass Inner



Main Body

a	
b	
c	
d	
e	
f	
g	
h	
i	
j	
k	
l	
m	
n	



[BLANK PAGE]