

STAPLE HERE

FOR OFFICIAL USE

--	--	--	--	--	--

## X033/201

NATIONAL  
QUALIFICATIONS  
2009

THURSDAY, 28 MAY  
1.00 PM – 3.30 PM

GRAPHIC  
COMMUNICATION  
INTERMEDIATE 2

Fill in these boxes and read what is printed below.

Full name of centre

Town

Forename(s)

Surname

Date of birth

Day Month Year

--	--	--	--	--	--	--	--	--	--

Scottish candidate number

--	--	--	--	--	--	--	--	--	--	--	--	--	--	--

Number of seat

**70 marks are allocated to this paper**

- 1 Answer **all** questions.
- 2 Read each question carefully before you answer.
- 3 Written answers may be in **ink** or **pencil**.
- 4 Drawings and sketches **must be in pencil**.
- 5 Dimensions are given in millimetres or as stated.
- 6 Orthographic drawings are in third angle projection.

**At the end of the examination**

check that your name is on every sheet;  
put the sheets in correct numerical order;  
place this sheet on top of the others;  
join all sheets together by **stapling** at the top left-hand corner;  
before leaving the examination room, you must give these sheets to the invigilator  
(if you do not you may lose all the marks for this paper).

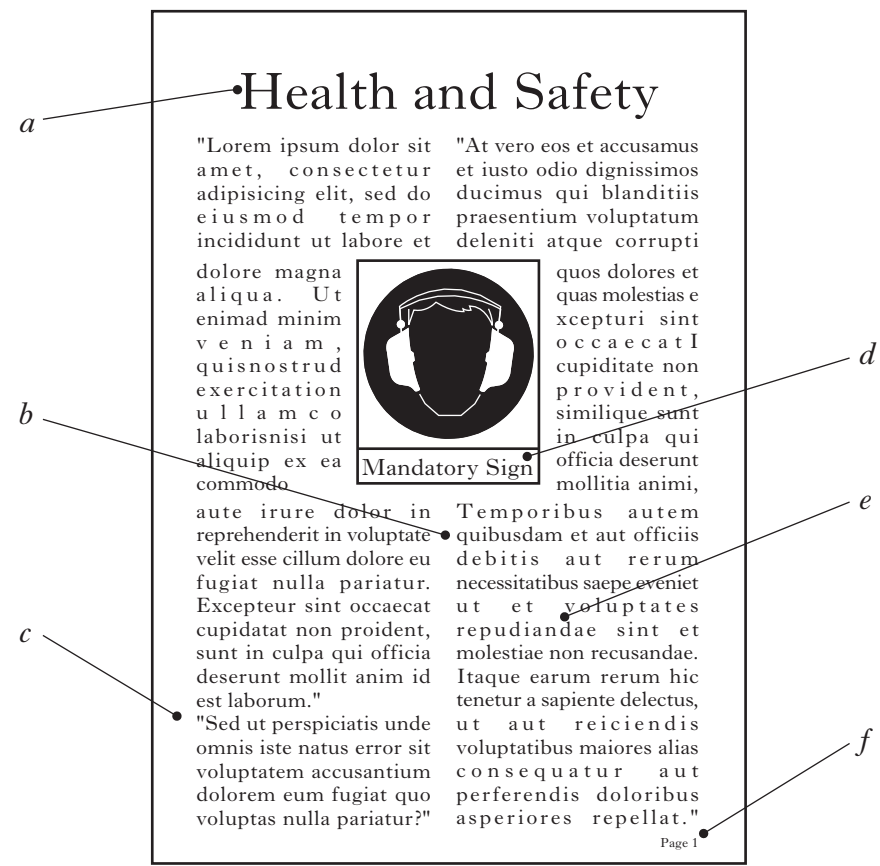
Question	Marks
1	
2	
3	
4	
5	
6	
7	
8	
Total Marks	



**[BLANK PAGE]**

1

A desktop published document is shown below. State the DTP features indicated.



- (a) .....
- (b) .....
- (c) .....
- (d) .....
- (e) .....
- (f) .....

(6 marks)

2

Explain, with the aid of sketches, the following CAD commands.

(a) Zoom

(b) Pan

(c) Chamfer

(d) Trim

(4 marks)

3

A school office has placed out green chairs for visitors and put a red notice board on the wall. A tint of green has been used for the walls.

(a) State the mood being created by using green on the walls.

.....  
.....

(b) State a reason for using red on the notice board.

.....  
.....

(c) State a colour for the carpet that would **harmonise** with the green chairs.

.....

(d) State what would be added to green to make the green tint.

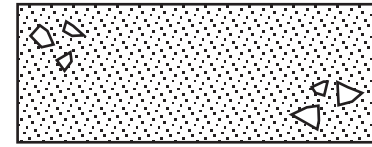
.....

(4 marks)

4

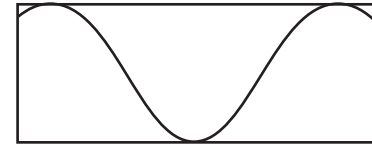
State what material each of the following British Standard symbols represent.

(a)



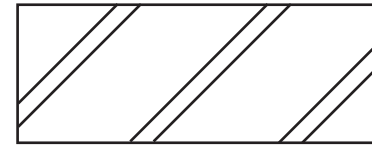
.....

(b)



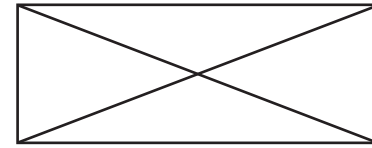
.....

(c)



.....

(d)



.....

(4 marks)

5

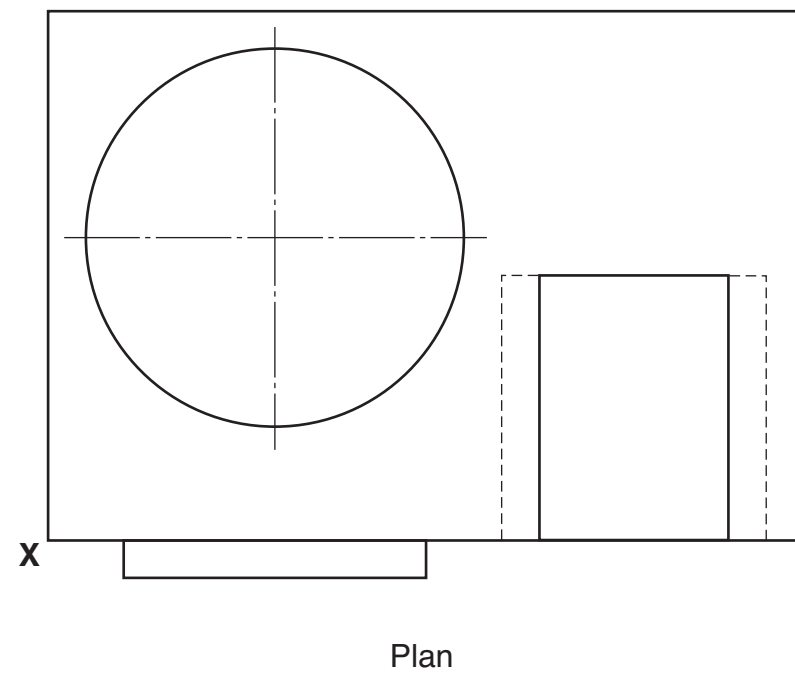
The plan and elevation of a battery and charger are given below.

Draw an **assembled** isometric view of the charger and battery, in the position indicated.

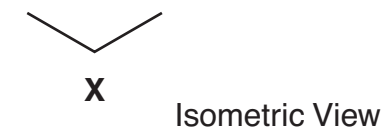
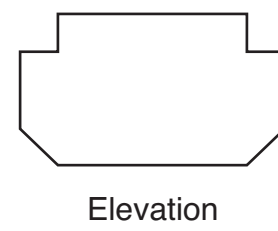
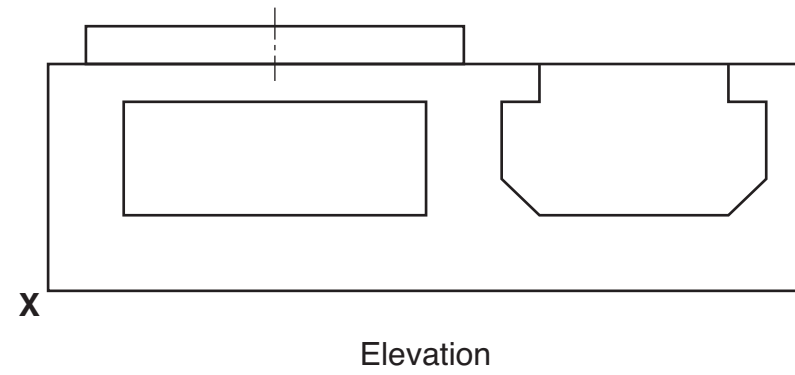
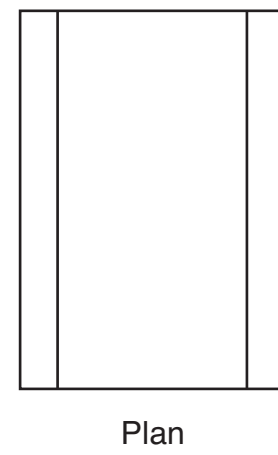
Do not show hidden detail.

(14 marks)

Charger

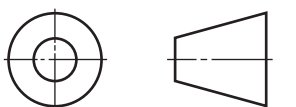


Battery



5

<i>a</i>	
<i>b</i>	
<i>c</i>	
<i>d</i>	
<i>e</i>	
<i>f</i>	
<i>g</i>	
<i>h</i>	
<i>i</i>	
<i>j</i>	
<i>k</i>	
<i>l</i>	
<i>m</i>	
<i>n</i>	

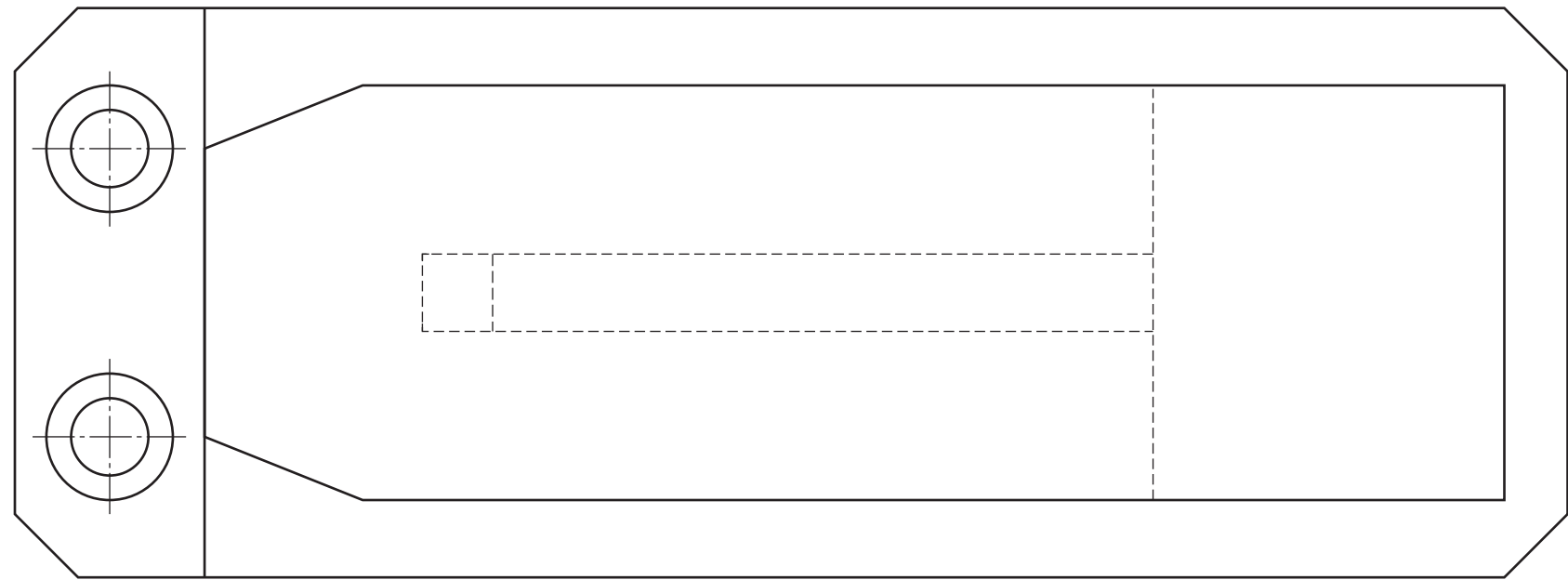


6

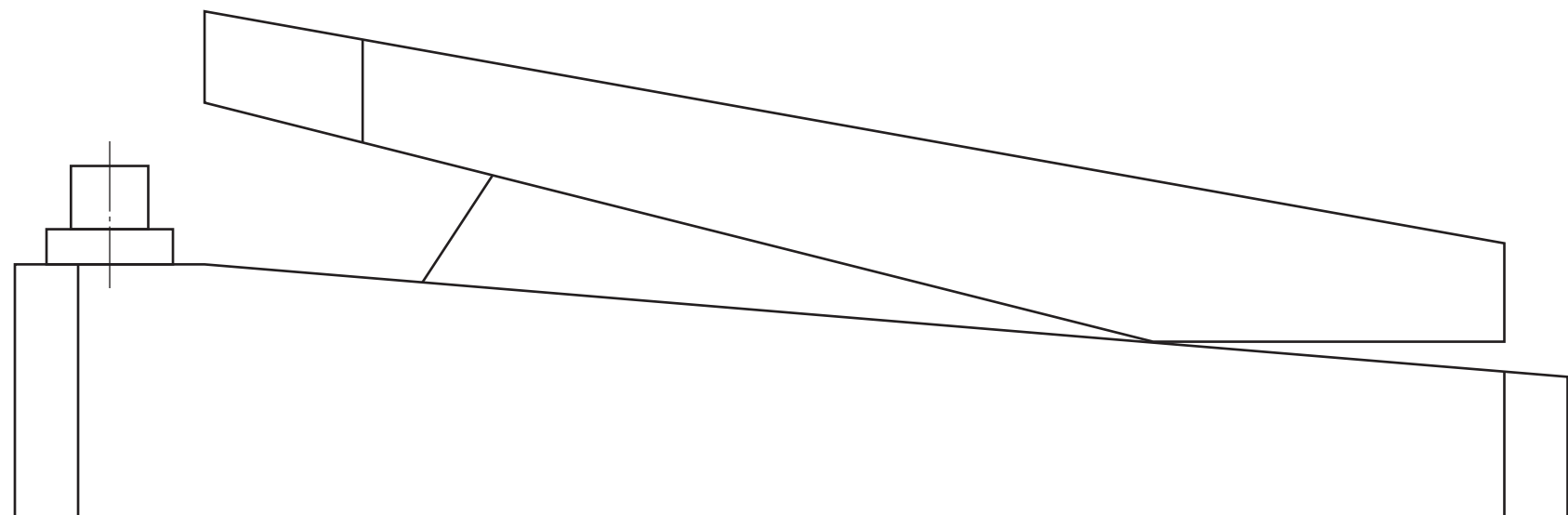
The elevation and plan of a guitar pedal are given below.  
In the position given, draw the end elevation of the pedal.  
**Show all hidden detail.**

(10 marks)

6



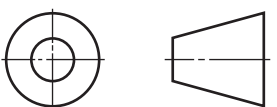
Plan



Elevation

<i>a</i>	
<i>b</i>	
<i>c</i>	
<i>d</i>	
<i>e</i>	
<i>f</i>	
<i>g</i>	
<i>h</i>	
<i>i</i>	
<i>j</i>	
<i>k</i>	
<i>l</i>	
<i>m</i>	
<i>n</i>	

End Elevation



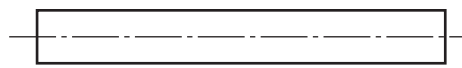
Orthographic views of the three component parts that make up a sewing machine foot are given.

Draw, in the positions indicated:

- (a) the elevation of the **assembled** foot;  
**Show all hidden detail.**
- (b) the sectional end elevation on **A-A** of the **assembled** foot.  
**Do not show hidden detail.**

(14 marks)

Pin

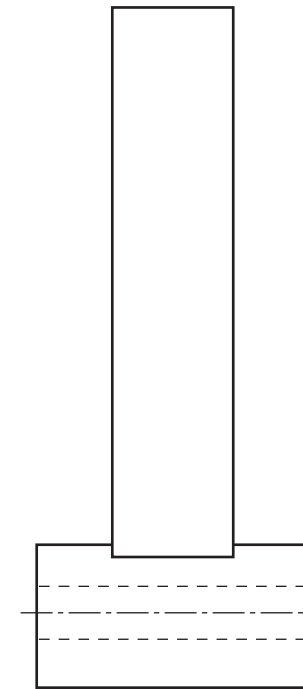


End Elevation

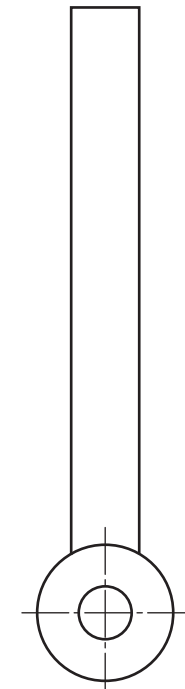


Elevation

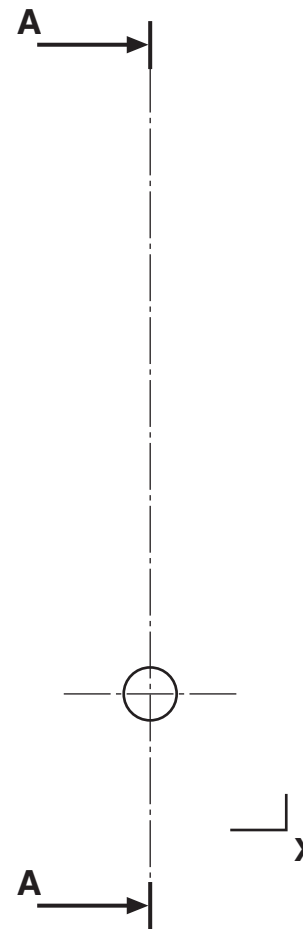
Bracket



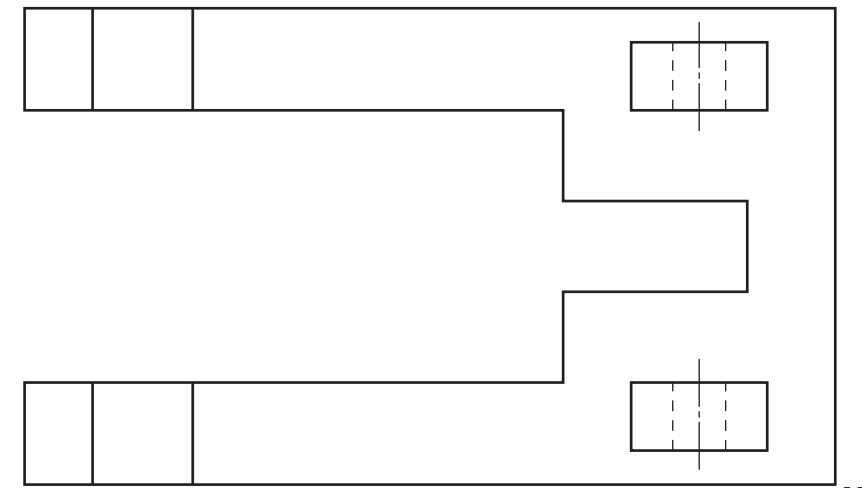
End Elevation



Elevation

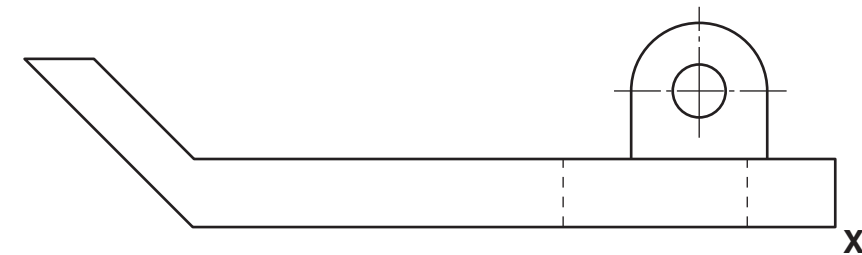


Elevation



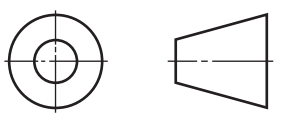
Plan

Foot Plate



Elevation

a	
b	
c	
d	
e	
f	
g	
h	
i	
j	
k	
l	
m	
n	



Sectional End Elevation A-A

8

The elevation and outline plan of a trophy based on a hexagonal pyramid and square prism are given below.

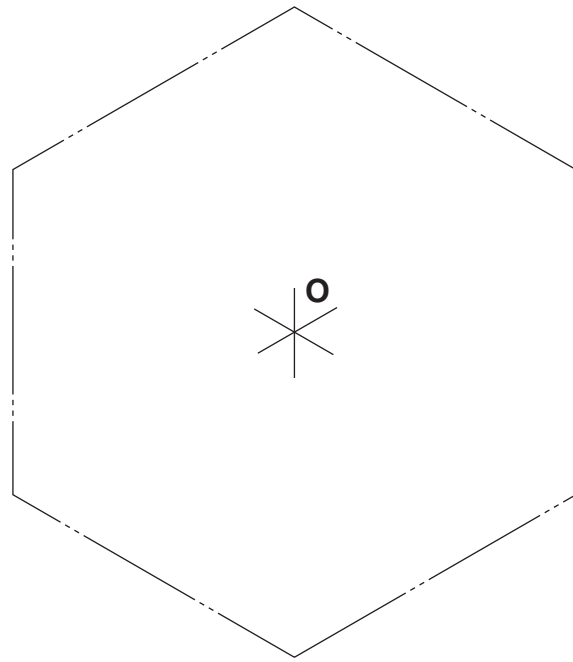
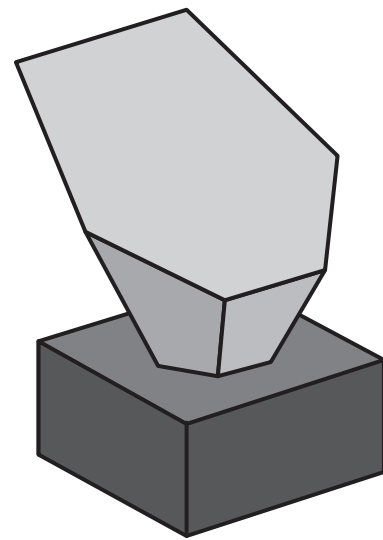
An illustration is shown.

Draw, in the positions indicated:

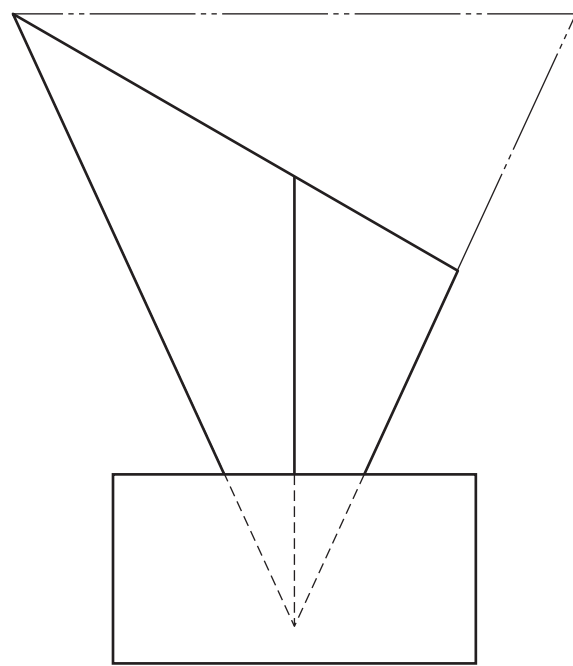
- (a) the complete plan;
- (b) the end elevation;
- (c) the development of the sloping sides of the pyramid.

Show all hidden detail.

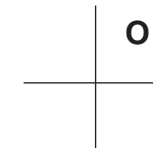
(14 marks)



Plan

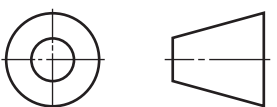


Elevation



End Elevation

Development



8

<i>a</i>	
<i>b</i>	
<i>c</i>	
<i>d</i>	
<i>e</i>	
<i>f</i>	
<i>g</i>	
<i>h</i>	
<i>i</i>	
<i>j</i>	
<i>k</i>	
<i>l</i>	
<i>m</i>	
<i>n</i>	