

STAPLE HERE

FOR OFFICIAL USE

--	--	--	--	--	--

G

1330/402

NATIONAL
QUALIFICATIONS
2007

THURSDAY, 17 MAY
10.35 AM - 12.05 PM

**GRAPHIC
COMMUNICATION
STANDARD GRADE**
General Level

Fill in these boxes and read what is printed below.

Full name of centre				Town			
<input type="text"/>				<input type="text"/>			
Forename(s)				Surname			
<input type="text"/>				<input type="text"/>			
Date of birth		Scottish candidate number				Number of seat	
Day	Month	Year	<input type="text"/>	<input type="text"/>	<input type="text"/>	<input type="text"/>	<input type="text"/>
<input type="text"/>	<input type="text"/>	<input type="text"/>	<input type="text"/>	<input type="text"/>	<input type="text"/>	<input type="text"/>	<input type="text"/>

1 95 marks are allocated to this paper: 35 marks for Knowledge and Interpretation
60 marks for Drawing Abilities

- 2 Answer **all** questions.
- 3 Read each question carefully before you answer.
- 4 Written answers may be in **ink** or **pencil**.
- 5 Drawings and sketches **must be in pencil**.
- 6 Sketches need only be in line form—**do not spend time rendering**.
- 7 Dimensions are given in millimetres or as stated.
- 8 Orthographic drawings are in third angle projection.
- 9 For each question, the element being tested and the mark allocation are shown in brackets, eg (DA 5) means a question on Drawing Abilities worth 5 marks.
- 10 **At the end of the examination**

check that your name is on every sheet;
put the sheets in correct numerical order;
place this sheet on top of the others;
join all sheets together by **stapling** at the top left-hand corner;
before leaving the examination room, you must give these sheets to the invigilator (if you do not you may lose all the marks for this paper).

	KI	DA
1		
2		
3		
4		
5		
6		
7		
8		
9		
Total Marks		



[BLANK PAGE]

An architect uses a CAD system to produce new house designs.

- (a) State **one** possible advantage, other than speed, to the architect of the availability of a CAD library of architectural symbols.

Answer

.....

KI 1

- (b) State **two** devices that could be used by the architect to place her existing manual drawings on to the computer hard disk.

Device 1

Device 2

KI 2

- (c) State the name of the type of view shown at **A**.

A

KI 1

- (d) State the names of the types of plan shown at **B** and **C**.

B

C

KI 2

- (e) State **two** computer storage devices that could be used to store CAG drawing files larger than 2MB.

Device 1

Device 2

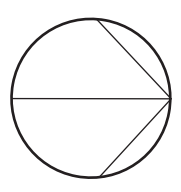
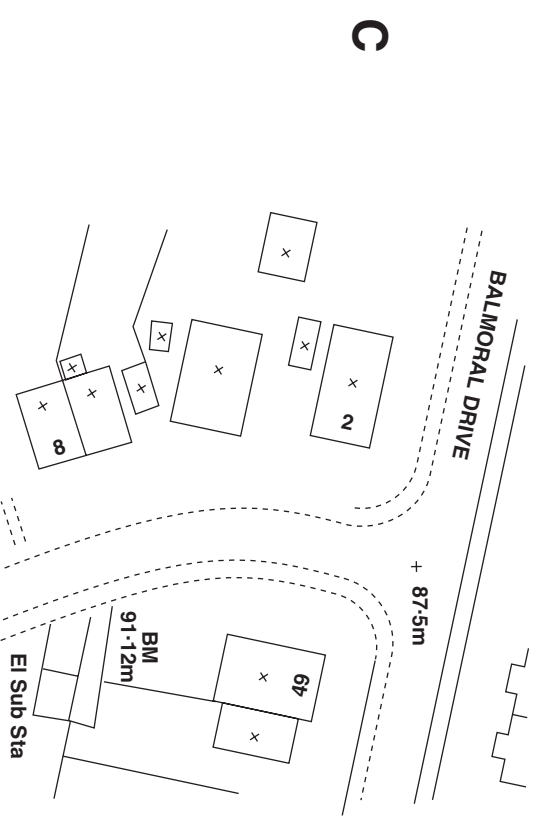
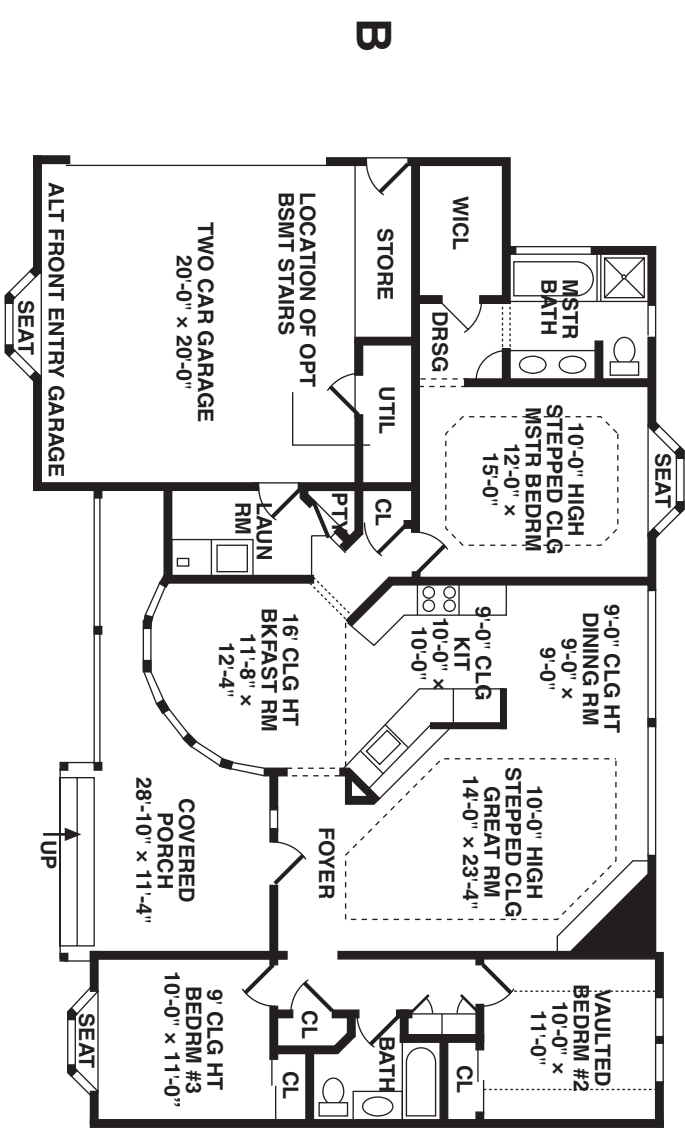
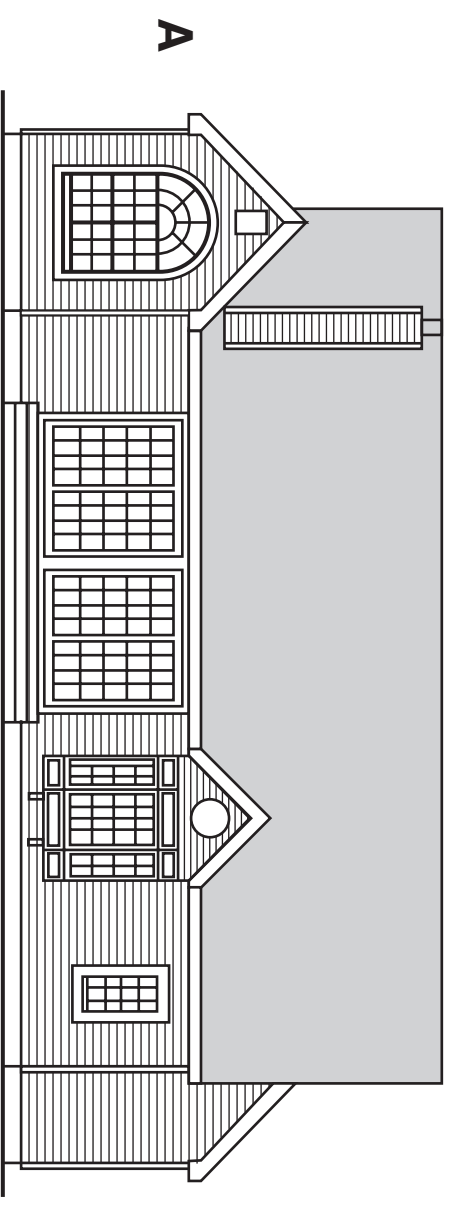
KI 2

- (f) State the name given to the **symbol X** on view **C**.

symbol X

KI 1

Total (KI 9)



symbol X

Study the drawings opposite and answer the following questions.

(a) Identify the symbols A, B, C and D on **Drawing X**.

A

B

C

D

KI 4

(b) Identify the symbols E, F, G, H, J and K on **Plan Y**.

E

F

G

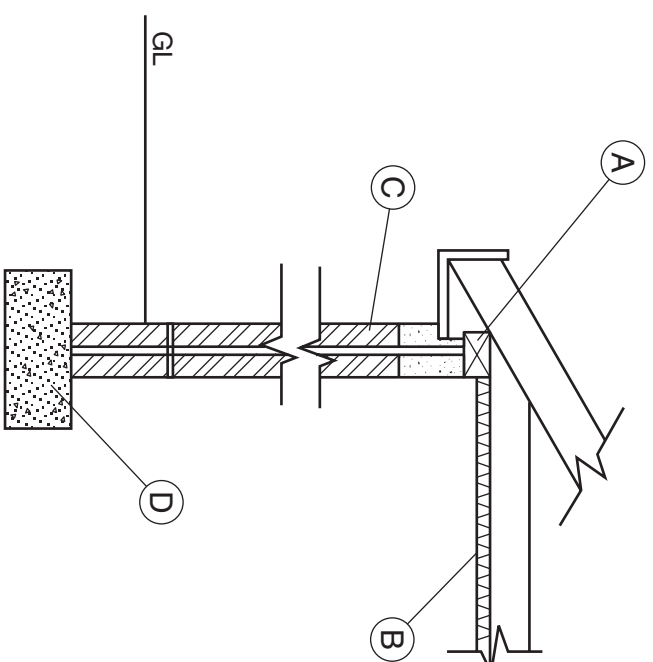
H

J

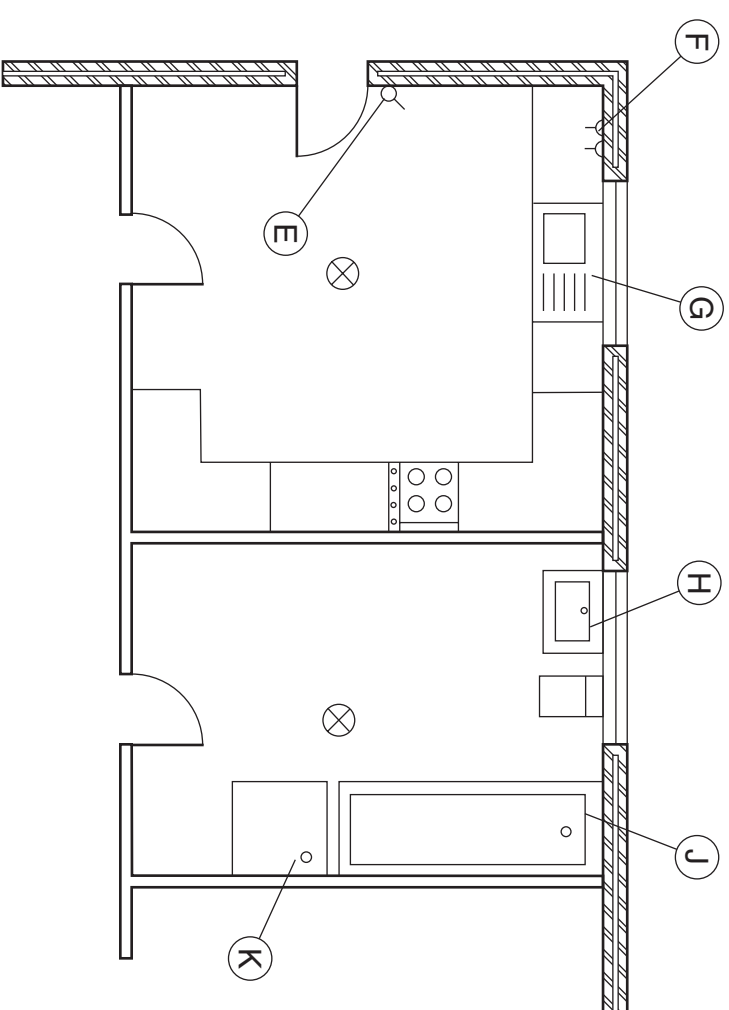
K

KI 6

Total (KI 10)



DRAWING X



PLAN Y

Study the drawings shown opposite and answer the following questions.

(a) State the general name given to the types of view shown at **A, B, C** and **D**.

Answer

KI 1

(b) State the individual names given to each of the views shown at **A, B, C** and **D**.

View A **View B**
View C **View D**

KI 4

(c) Name **one** other type of view in which you would see all three dimensions.

Answer

KI 1

(d) State **Angle X** on **View B**.

Angle

KI 1

(e) All of the views opposite are drawn to different scales. State **two** reasons that can affect the choice of scale in a drawing.

Reason 1
.....
Reason 2
.....

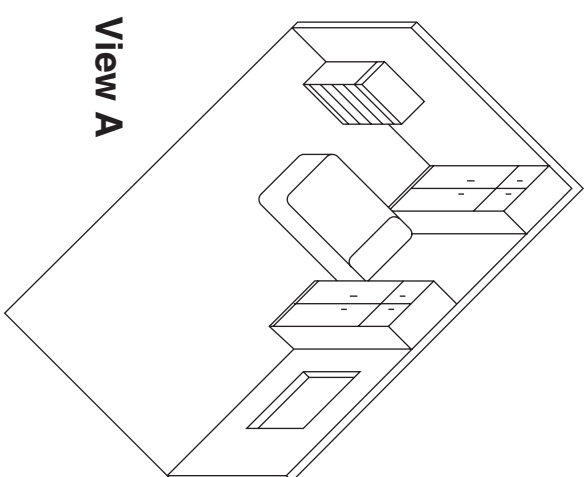
KI 2

(f) State what is meant by scale 1:2.

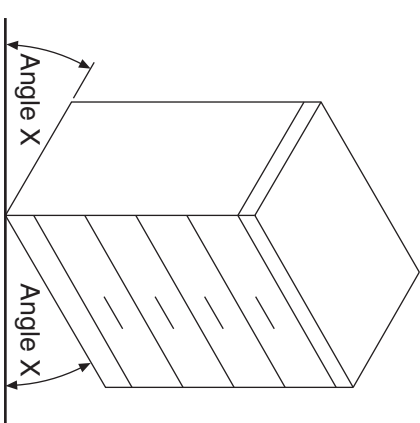
Answer

KI 1

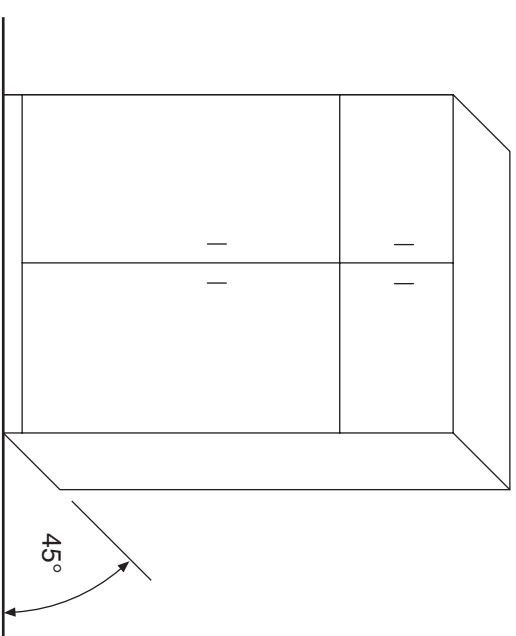
Total (KI 10)



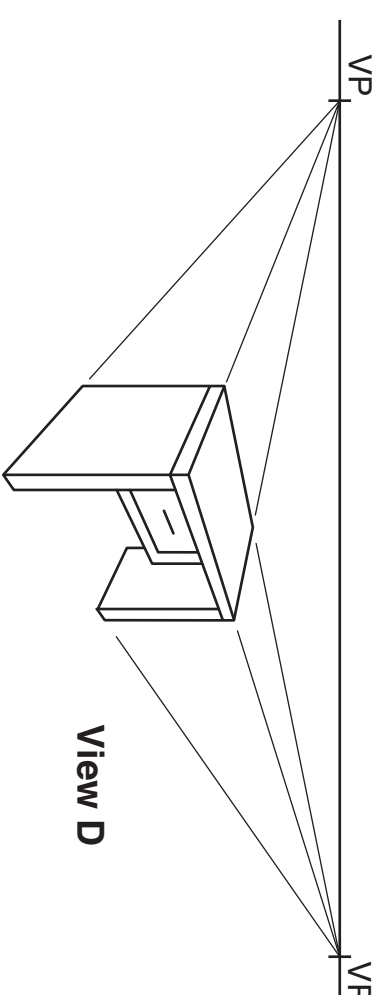
View A



View B



View C



View D

In industry, computers are now used to produce many different types of graphics.

(a) Complete the following table by adding the type of software package used to accomplish the given task.

Department	Task	Software Package Type
Administration Department	The production of letters to the firm's clients	
Drawing Office	The production of new working drawings	
Sales and Marketing Department	The production of advertising leaflets containing text and graphics	
Sales and Marketing Department	The production of promotional graphics showing light, shade and tone.	

KI 4

(b) State the name of a hardware **device** that the firm could use to send designs to offices abroad.

Hardware Device

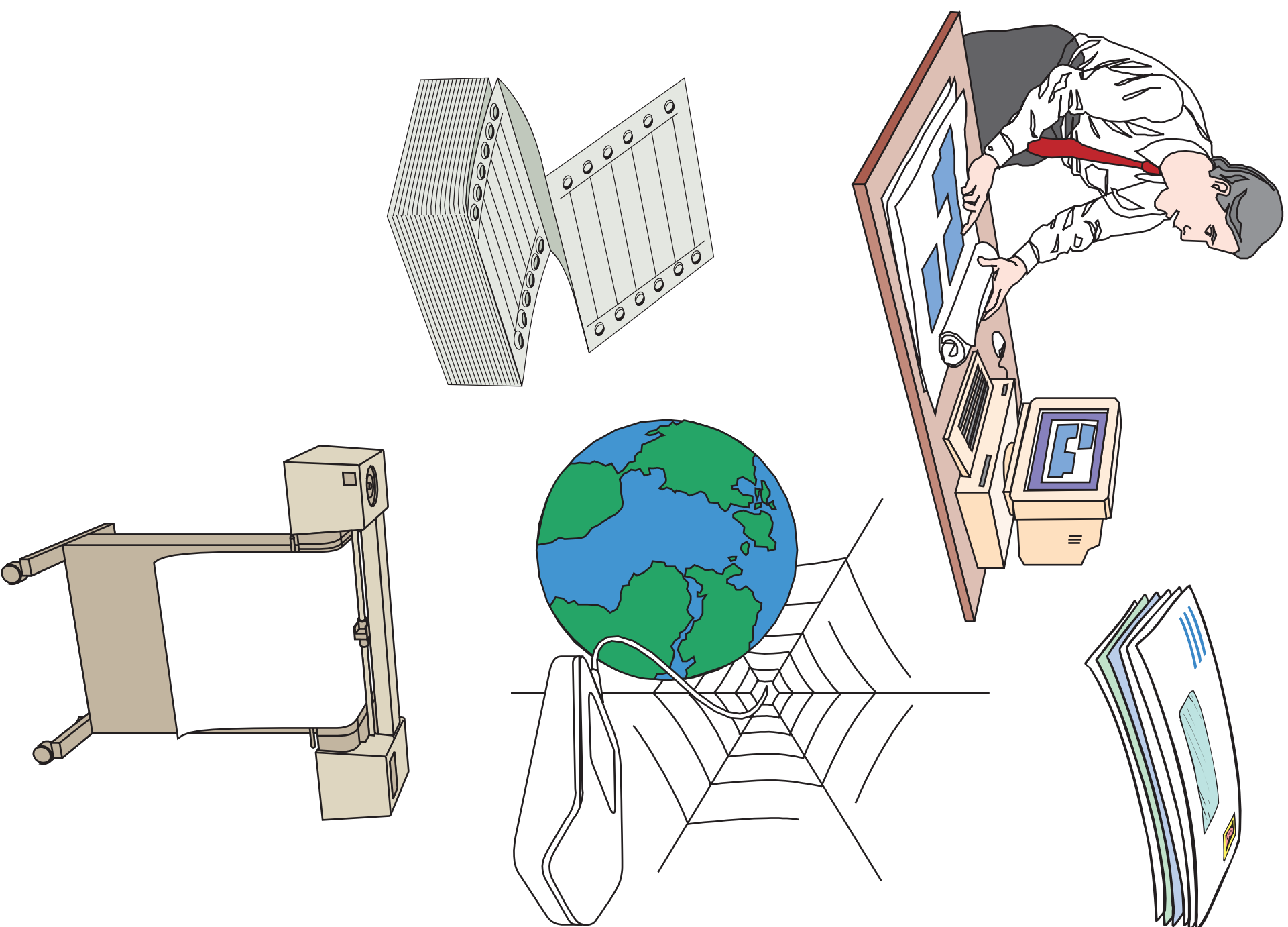
KI 1

(c) State what is meant by the term **backup** when applied to computer data.

Answer

KI 1

Total (KI 6)



The elevation of a stapler is given. A pictorial view is also shown. Using the given sizes, **draw**:

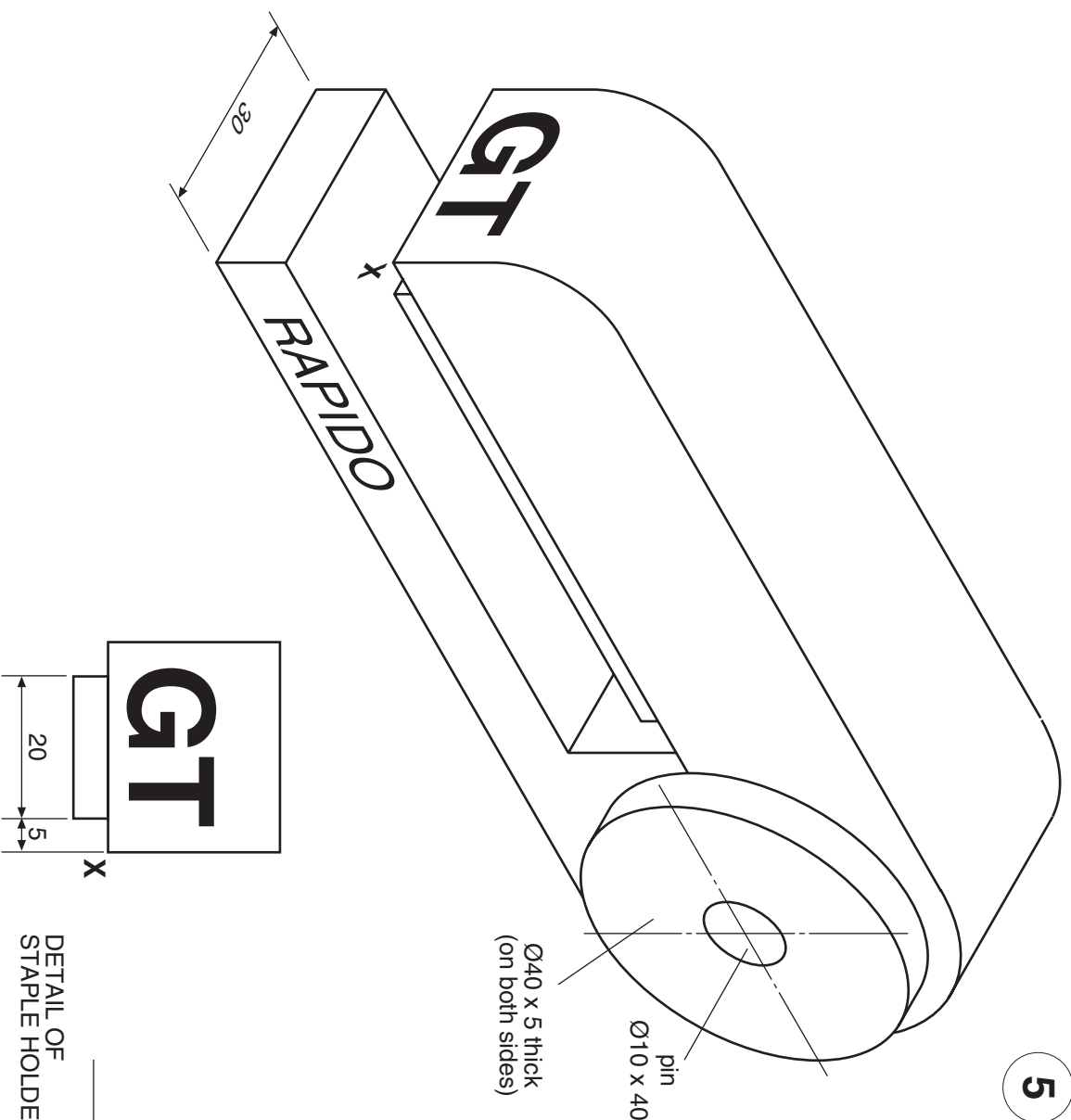
- (a) the end elevation in the position indicated;
- (b) the plan projected from the elevation.

Show hidden detail.

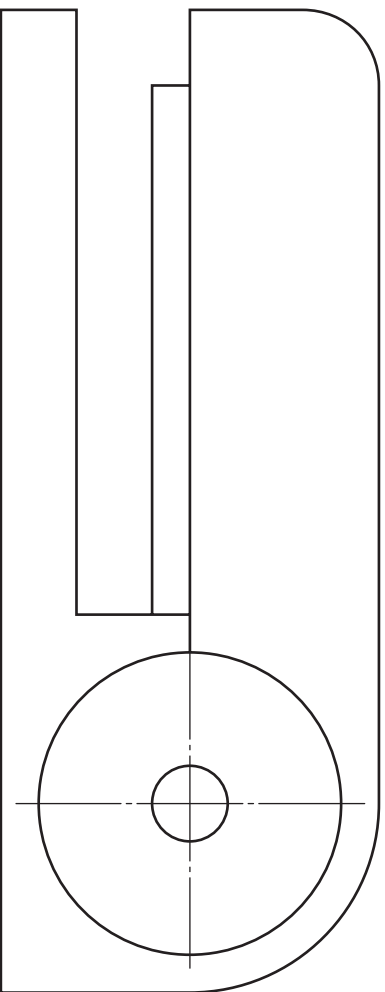
Total (DA 11)

DA 5

DA 6



PLAN



END ELEVATION



ELEVATION



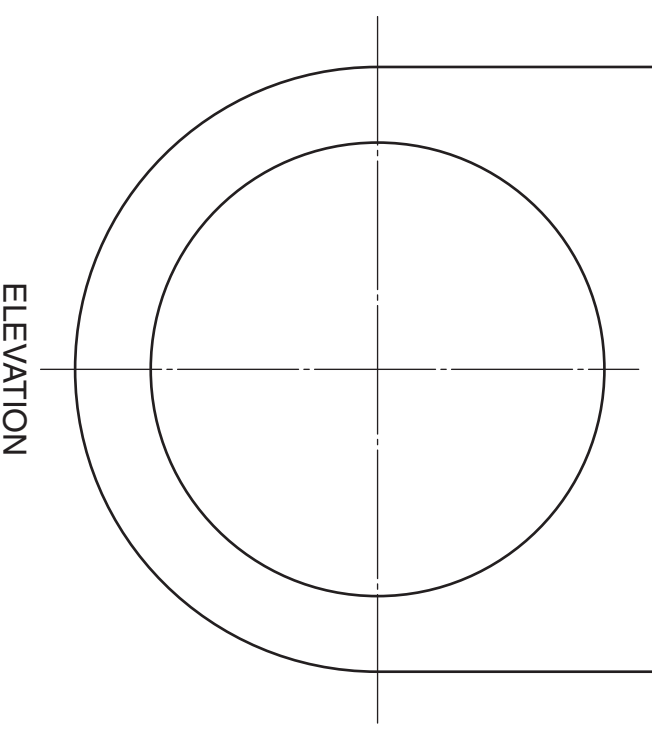
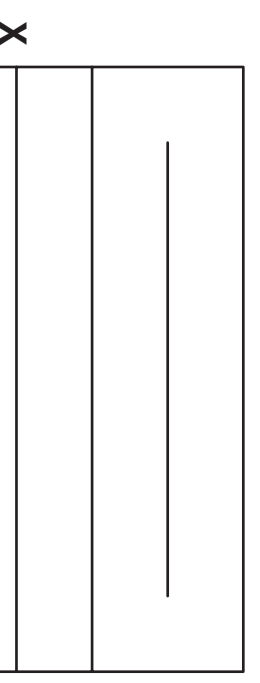
The elevation and end elevation of a card activated door handle are shown.

Draw an oblique view of the door handle, using the given start **X**.

Do not show hidden detail.

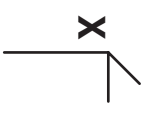
Lines at 45 ° should be drawn half full size.

Total (DA 12)

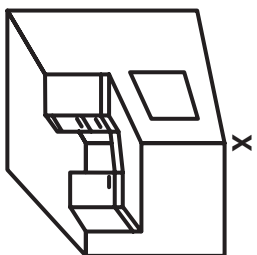
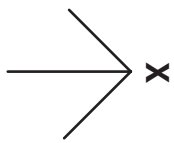


ELEVATION

END ELEVATION



OBLIQUE VIEW



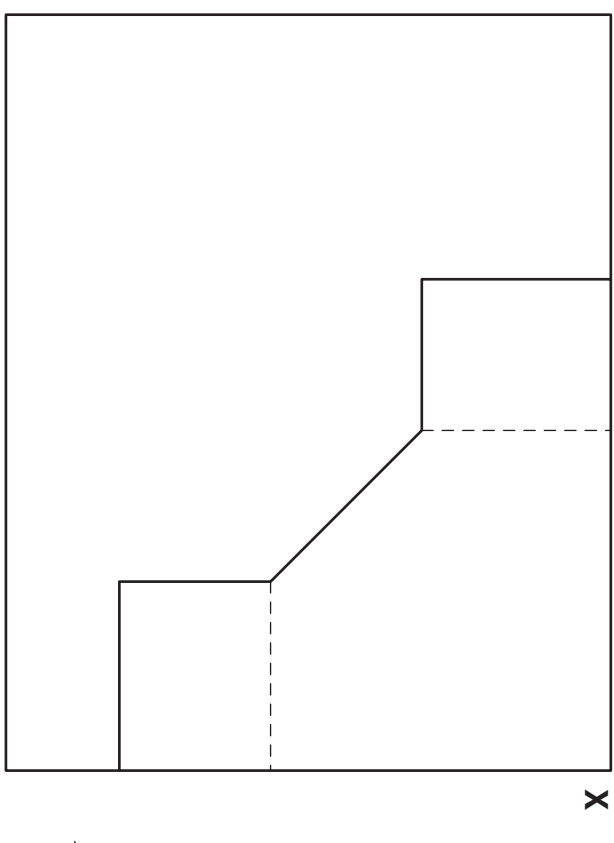
The elevation, end elevation, plan and pictorial view of a room with a corner computer desk and mirror are shown.

Draw a planometric view of the room, desk and mirror, using the given start **X**.

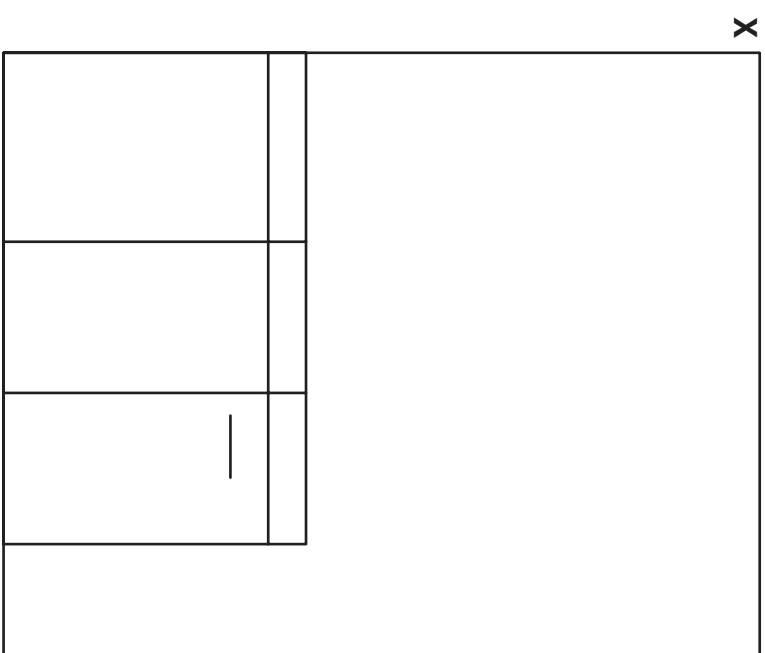
Take all sizes from the given views.

Do not show hidden detail.

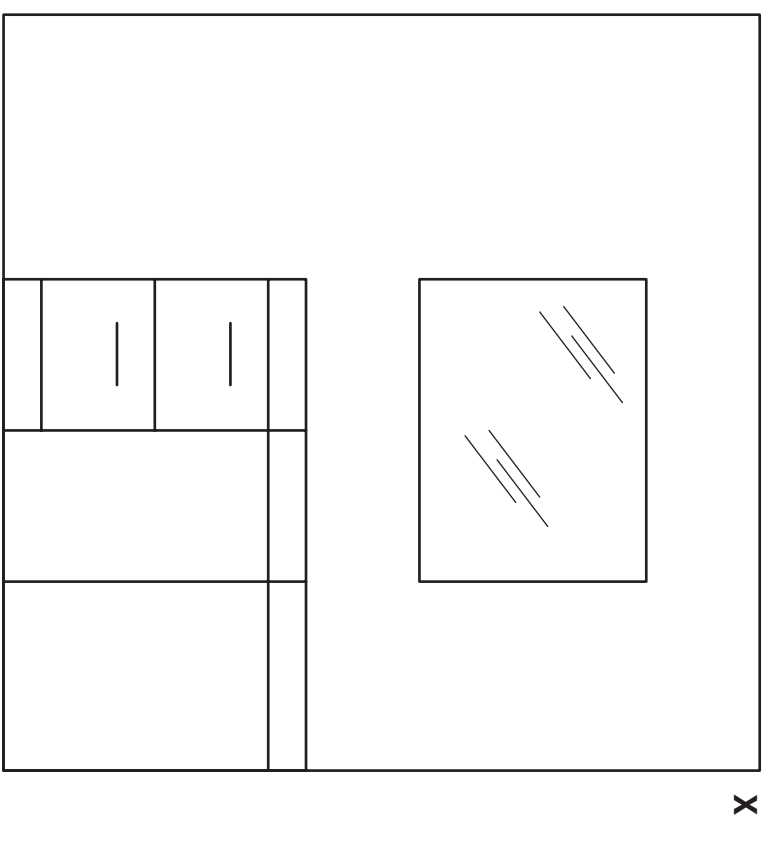
Total (DA 12)



PLAN



END ELEVATION



ELEVATION

The elevation and end elevation of a menu holder are given. A pictorial view and detail of the menu slot are also shown.

Draw:

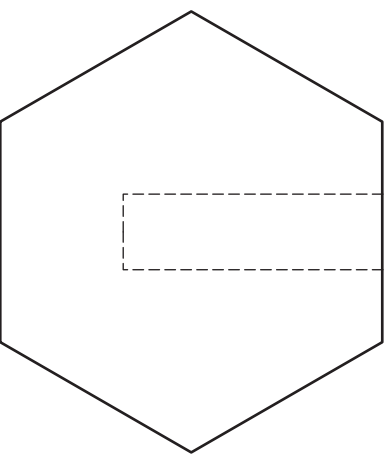
- (a) the plan;
- (b) the true shape of the end.

Show hidden detail.

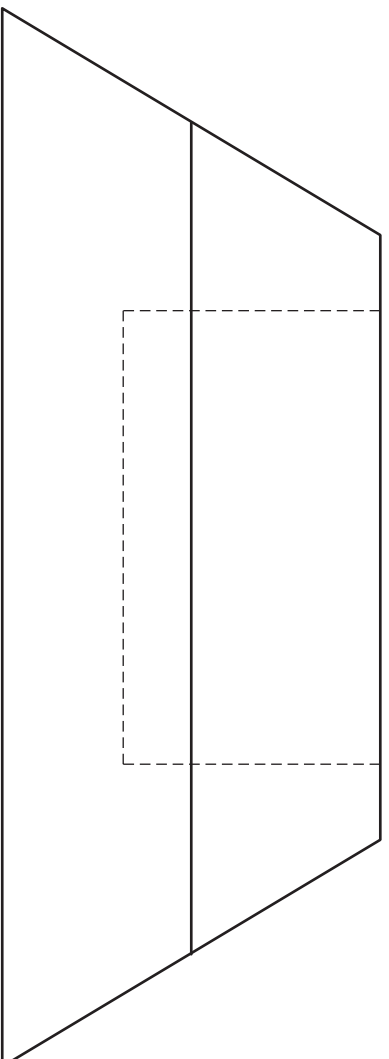
DA 7
 DA 4
 Total (DA 11)

[1330/402]

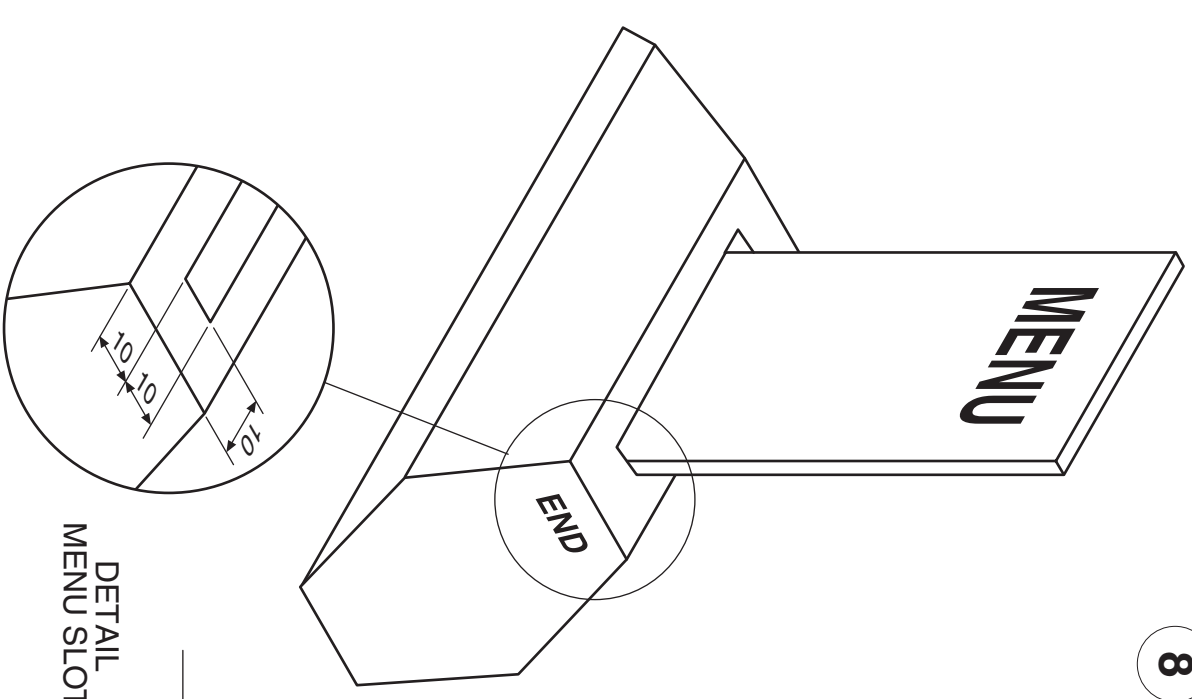
END ELEVATION



PLAN



ELEVATION



DETAIL
MENU SLOT

TRUE SHAPE OF END

The elevation and incomplete plan of a street lamp casing are given. A pictorial sketch of the street lamp is also shown.

The lamp casing is a cut rectangular pyramid.

Draw:

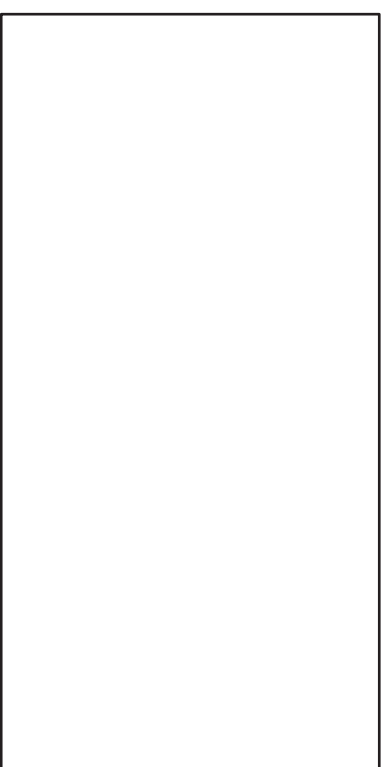
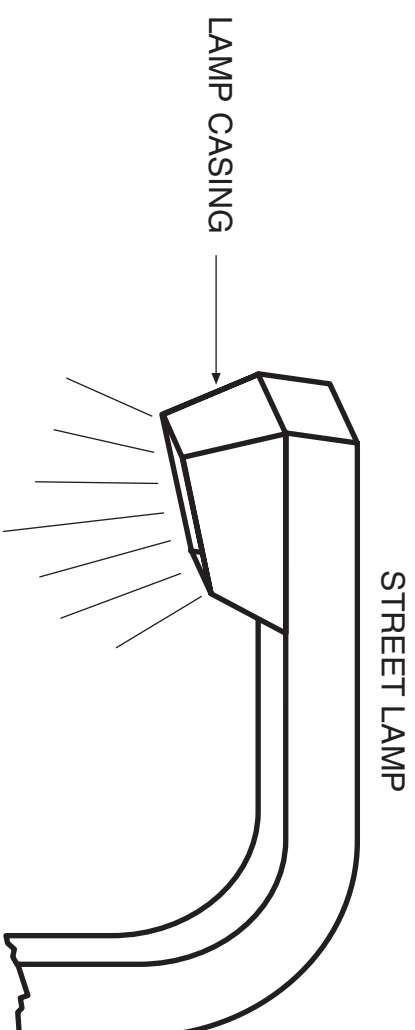
- (a) the complete plan of the lamp casing;
- (b) the end elevation of the lamp casing;
- (c) the development of the sides of the lamp casing, using start point O.

DA 4

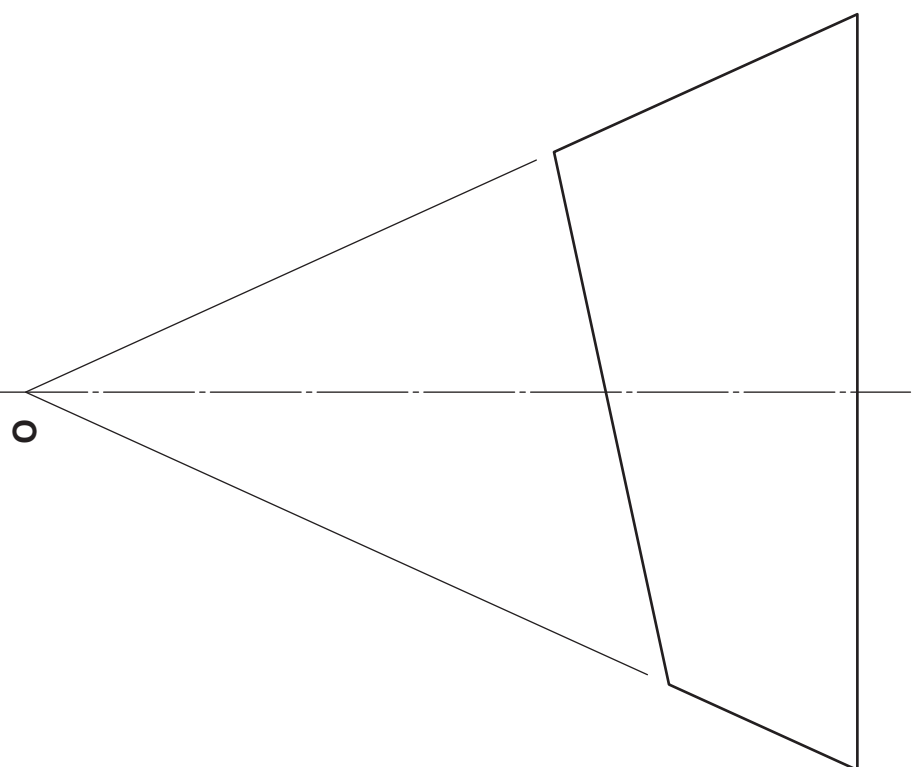
DA 4

DA 6

Total (DA 14)

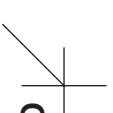


PLAN



ELEVATION

END ELEVATION



DEVELOPMENT

[BLANK PAGE]