

STAPLE HERE

FOR OFFICIAL USE

| | | | | | | | |
|--|--|--|--|--|--|--|--|
| | | | | | | | |
|--|--|--|--|--|--|--|--|

F

1330/401

NATIONAL QUALIFICATIONS 2008

WEDNESDAY, 21 MAY
9.00 AM – 10.15 AM

GRAPHIC COMMUNICATION
STANDARD GRADE
Foundation Level

Fill in these boxes and read what is printed below.

| | | | | | |
|---------------------|----------------------|----------------------|----------------------|---------------------------|----------------------|
| Full name of centre | | | | Town | |
| Forename(s) | | | | Surname | |
| Date of birth | Day | Month | Year | Scottish candidate number | Number of seat |
| | <input type="text"/> | <input type="text"/> | <input type="text"/> | <input type="text"/> | <input type="text"/> |

80 marks are allocated to this paper: KI 30 marks
DA 50 marks

- 1 Answer **all** questions.
- 2 Read each question carefully before you answer.
- 3 Written answers may be in **ink** or **pencil**.
- 4 Drawings and sketches **must be in pencil**.
- 5 Sketches need only be in line form—**do not spend time rendering**.
- 6 Dimensions are given in millimetres or as stated.
- 7 Orthographic drawings are in third angle projection.
- 8 For each question, the element being tested and the mark allocation are shown in brackets, eg (DA 5) means a question on Drawing Abilities worth 5 marks.
- 9 **At the end of the examination**

check that your name is on every sheet;
put the sheets in correct numerical order;
place this sheet on top of the others;
join all sheets together by **stapling** at the top left-hand corner;
before leaving the examination room, you must give these sheets to the invigilator (if you do not you may lose all the marks for this paper).

| | | |
|-------------|----|----|
| | KI | DA |
| 1 | | |
| 2 | | |
| 3 | | |
| 4 | | |
| 5 | | |
| 6 | | |
| 7 | | |
| 8 | | |
| 9 | | |
| Total Marks | | |



[BLANK PAGE]

(a) Complete the following table by **ticking** whether it is used for **input or output**.

| NAME | INPUT | OUTPUT |
|---------------|-------|--------|
| Mouse | | |
| Monitor | | |
| Plotter | | |
| Keyboard | | |
| Scanner | | |
| Laser printer | | |

KI 6

(b) State what is meant by the term **hard copy**.

Answer

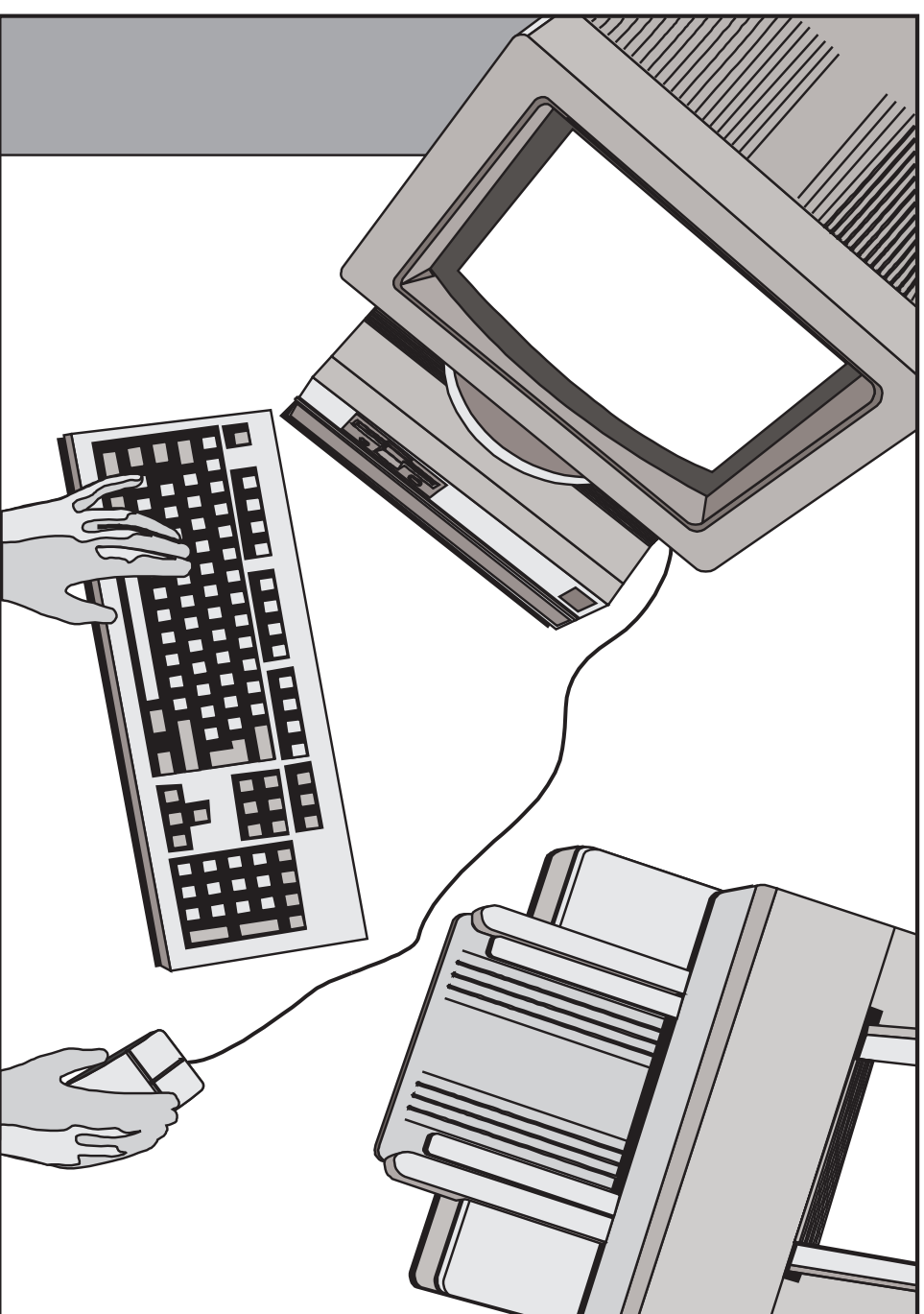
KI 1

(c) State why it is important to store work at regular intervals on the computer.

Reason

KI 1

Total (KI 8)

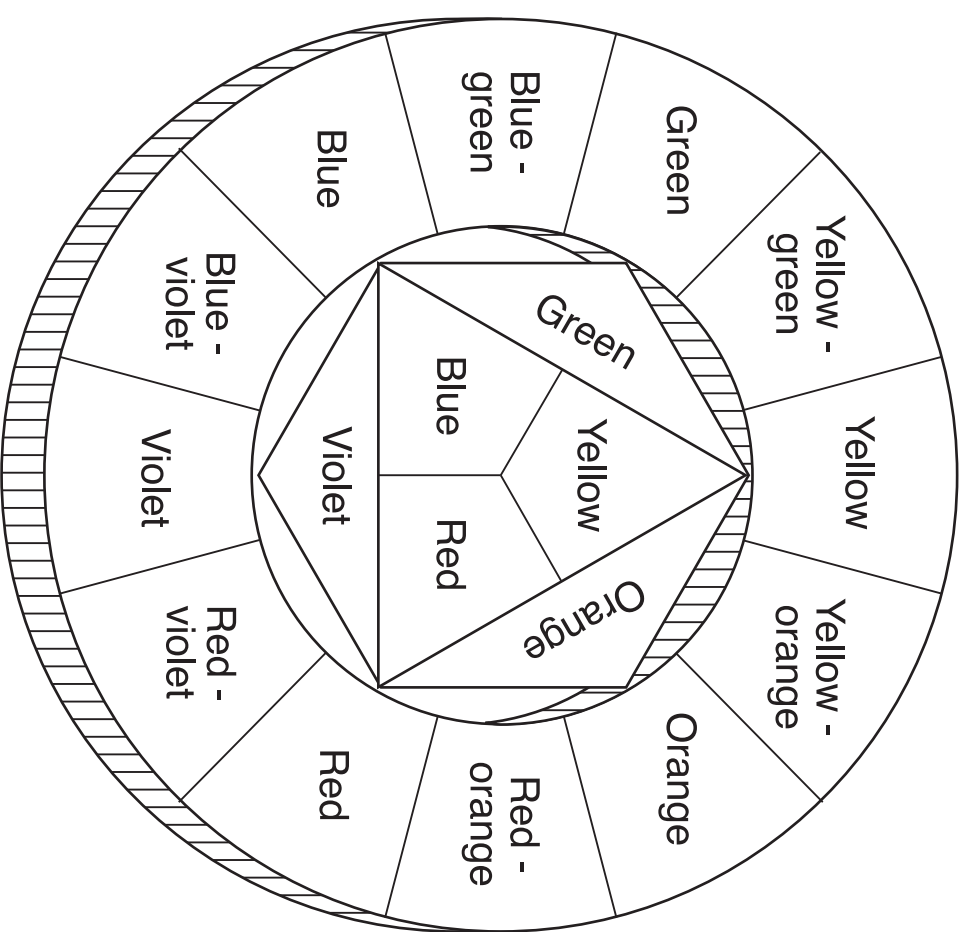


Use the **Colour Wheel** to help you answer the following questions.

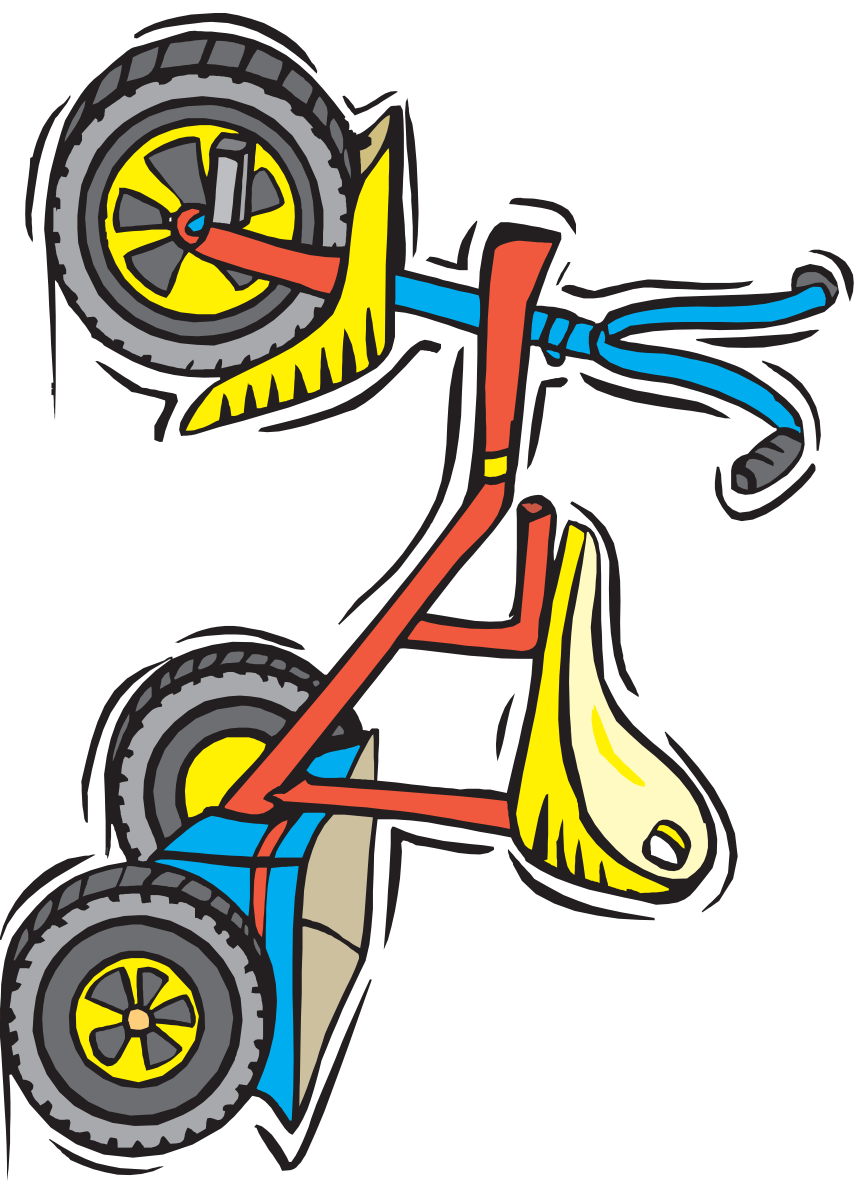
The toy bike shown has been painted using bright colours to make it attractive to **children**.

- (a) Red was chosen for the frame. State **two** colours that are in contrast with red.
 Colour 1 Colour 2 **KI 2**
- (b) State **two** colours that are in harmony with red.
 Colour 1 Colour 2 **KI 2**
- (c) Yellow was chosen for the seat and wheels. Name **two** tertiary colours that contain yellow.
 Colour 1 Colour 2 **KI 2**
- (d) Here is a list of colours.
Red
Yellow
Blue
Green
 From the above list, choose **one** warm and **one** cool colour.
 Warm colour Cool colour **KI 2**
- (e) State what must be added to green in order to make it a tint of green.
 Answer **KI 1**

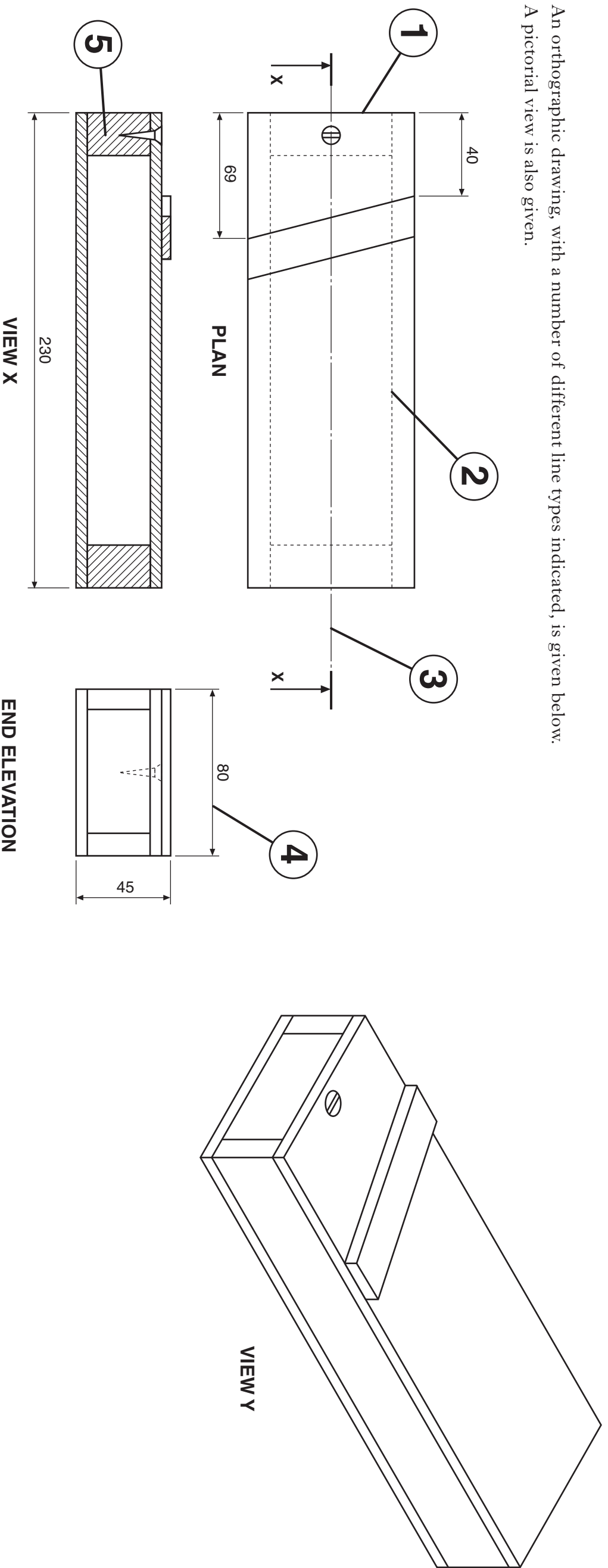
Total (KI 9)



COLOUR WHEEL



An orthographic drawing, with a number of different line types indicated, is given below. A pictorial view is also given.



(a) Complete the given table by adding the number of the line types indicated on the orthographic drawing above.

Table of line types

| | |
|---------------|--|
| Dimension | |
| Hidden | |
| Hatching | |
| Cutting plane | |
| Outline | |

(b) State the name of **view X**.

View X

KI 5

KI 1

(c) State the type of pictorial drawing shown in **view Y**.

View Y

KI 1

(d) State the name of **two** other types of pictorial drawing.

Answer 1 Answer 2

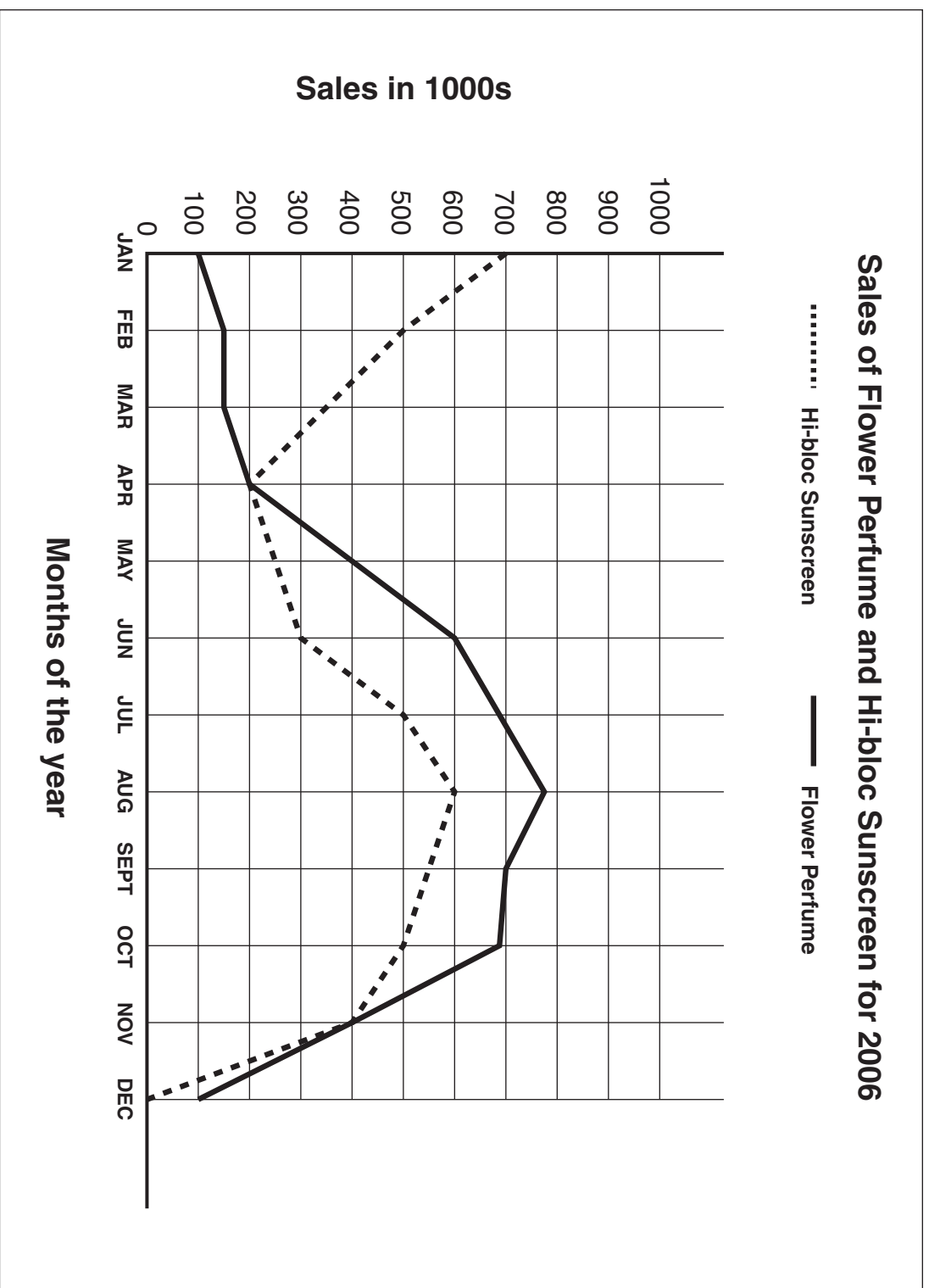
KI 2

Total (KI 9)

From the graph showing a shop's sales of perfume and sunscreen for a year, answer the following questions.

- (a) State the month that had the most perfume sales.
Month
- (b) State the number of months in which perfume sales and sunscreen sales were equal.
Number of Months
- (c) State the month that had the most sales of sunscreen.
Month
- (d) State the month that sunscreen sales were at zero.
Month

KI 1
KI 1
KI 1
KI 1
Total (KI 4)



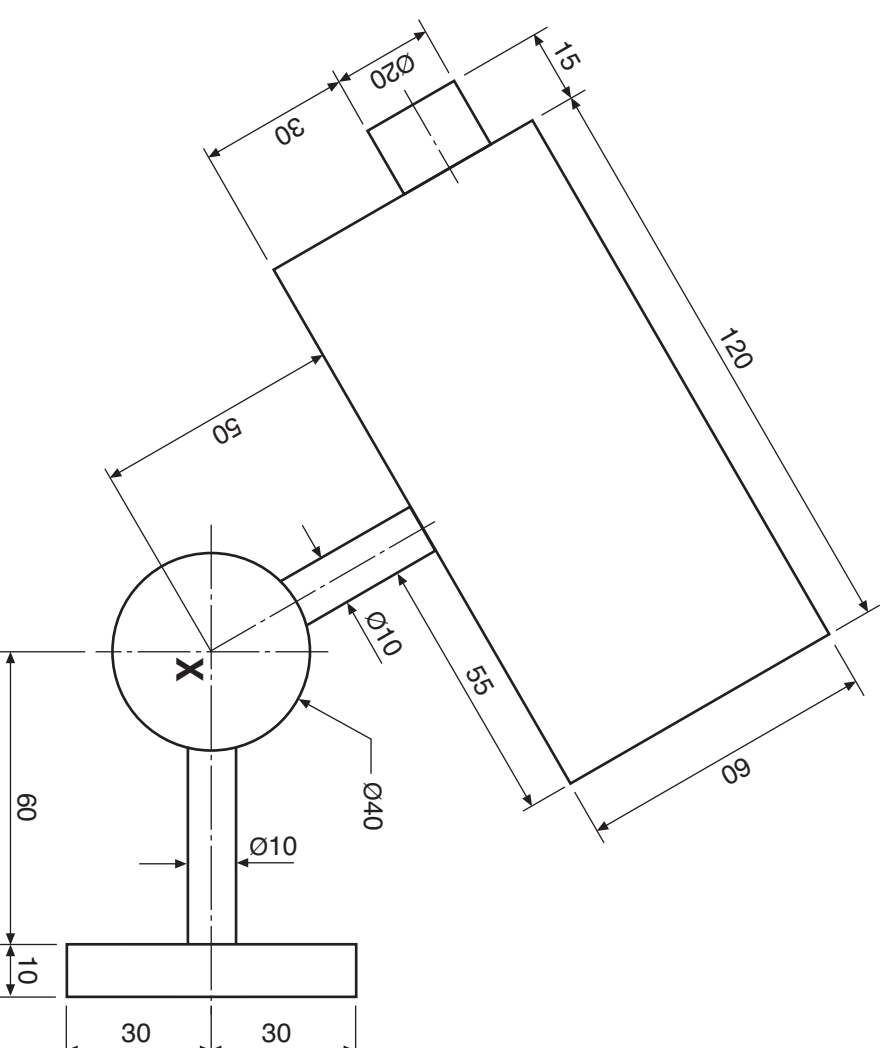
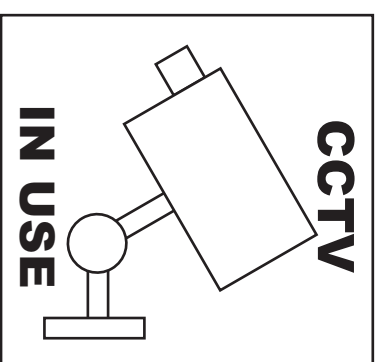
A sketch and a dimensioned drawing of a CCTV warning sign are shown.

Redraw the camera to the sizes given.

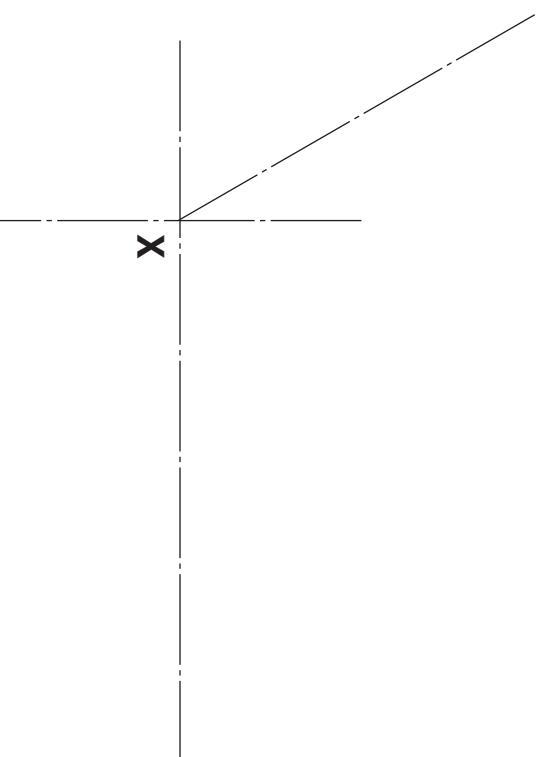
The position of centre **X** is given as a start.

Do not show dimensions.

Total (DA 12)



NOT TO SCALE

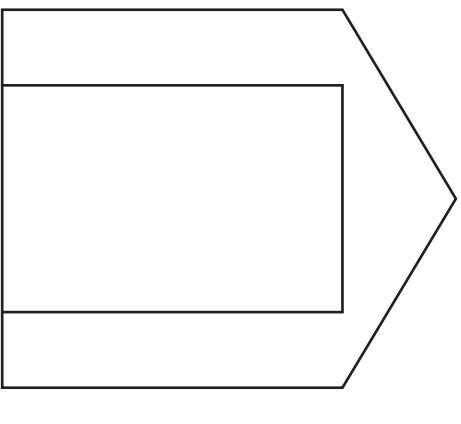


The elevation and end elevation of a model shed are given.

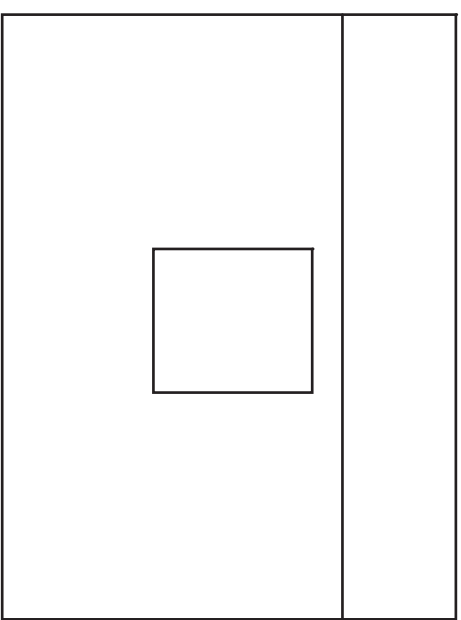
Draw an **isometric view** of the shed, using corner **X** as a start.

Do not show hidden detail.

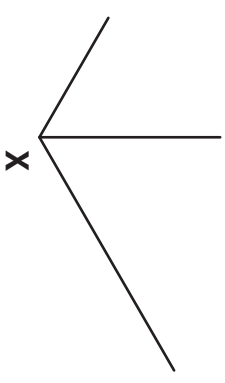
Total (DA 10)



ELEVATION



END ELEVATION

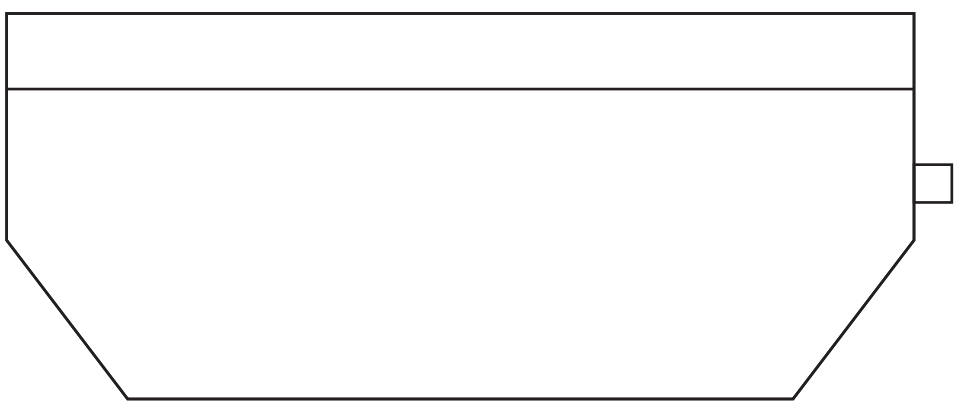


ISOMETRIC VIEW

A pictorial view of a paper towel dispenser is shown. The end elevation is also given.

- Draw:**
- (a) the elevation projected from the end elevation;
 - (b) the plan.

DA8
 DA4
 Total (DA 12)

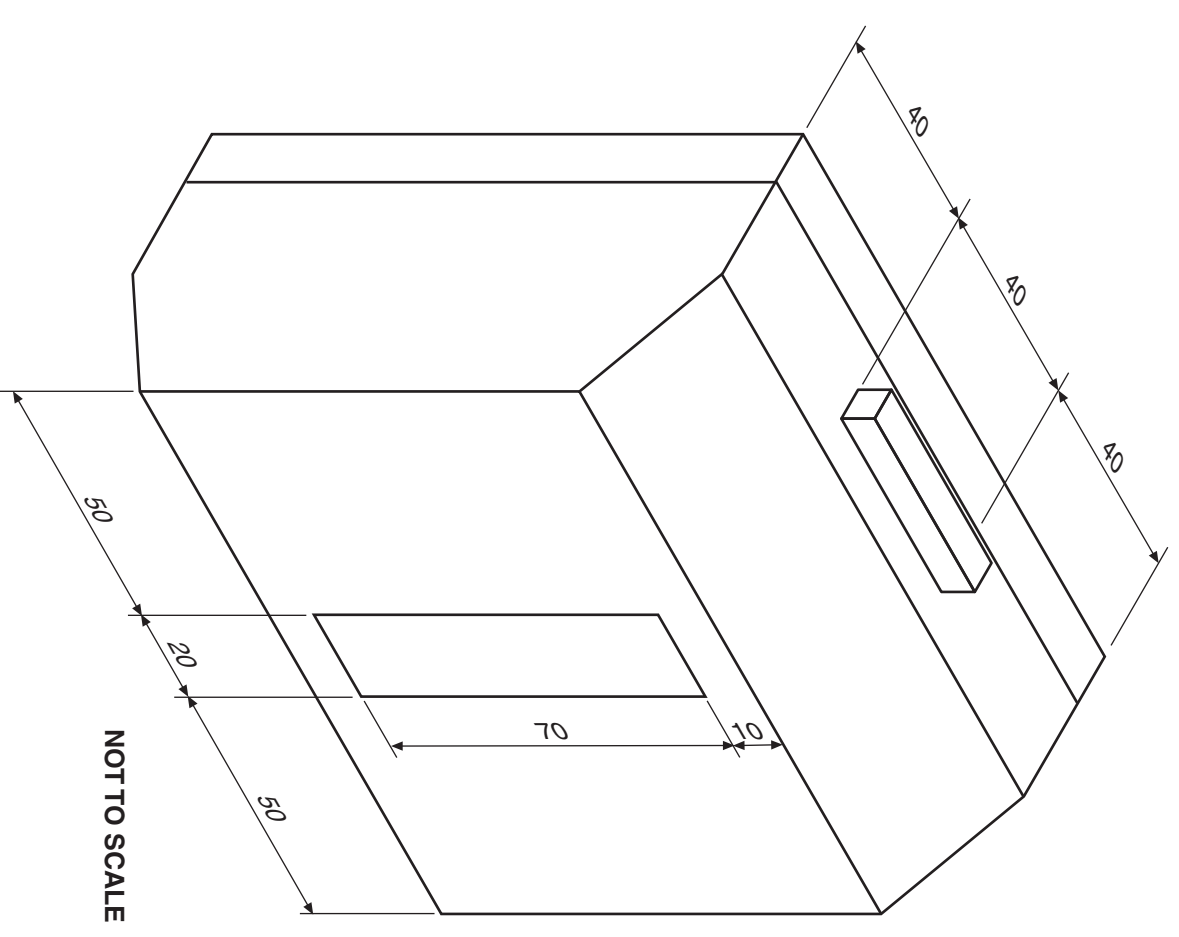


END ELEVATION



ELEVATION

PLAN



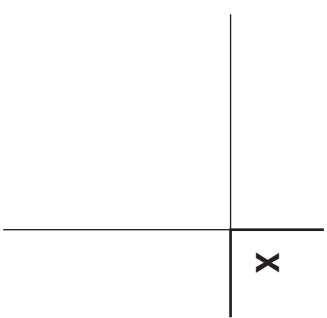
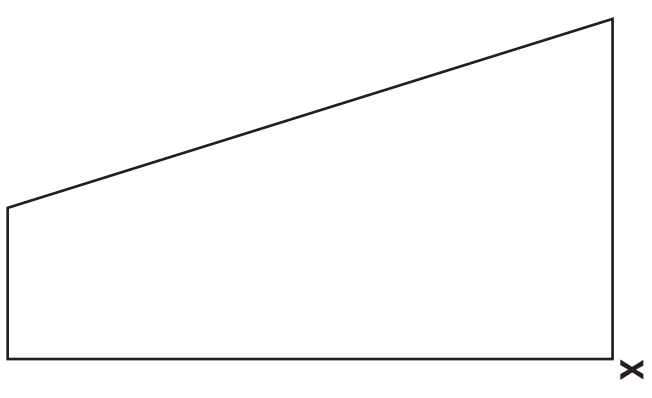
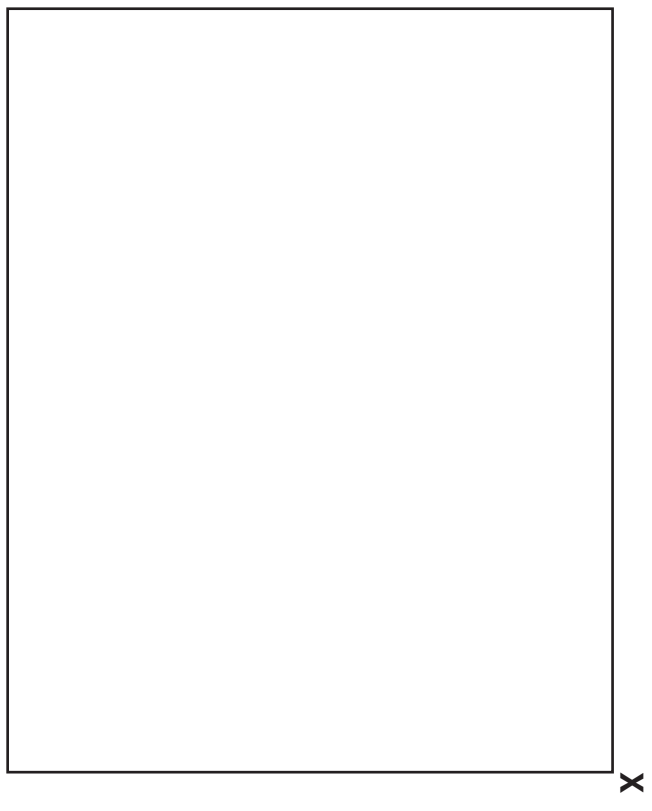
NOT TO SCALE

A pictorial view of the cover for a railway station help point intercom is shown.

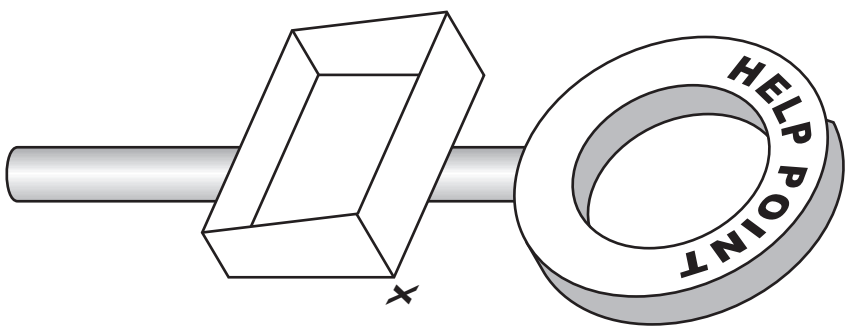
The elevation and end elevation of the cover are also given.

Draw the development of the cover, using X as the starting point.

Total (DA 7)



DEVELOPMENT

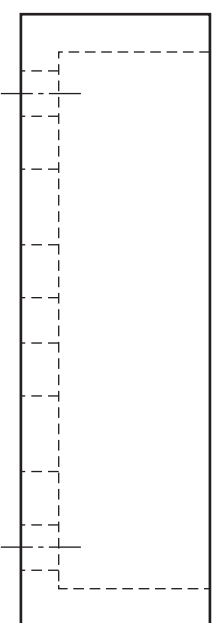


A pictorial view of an electrical socket cover is shown. The elevation and plan are also given.

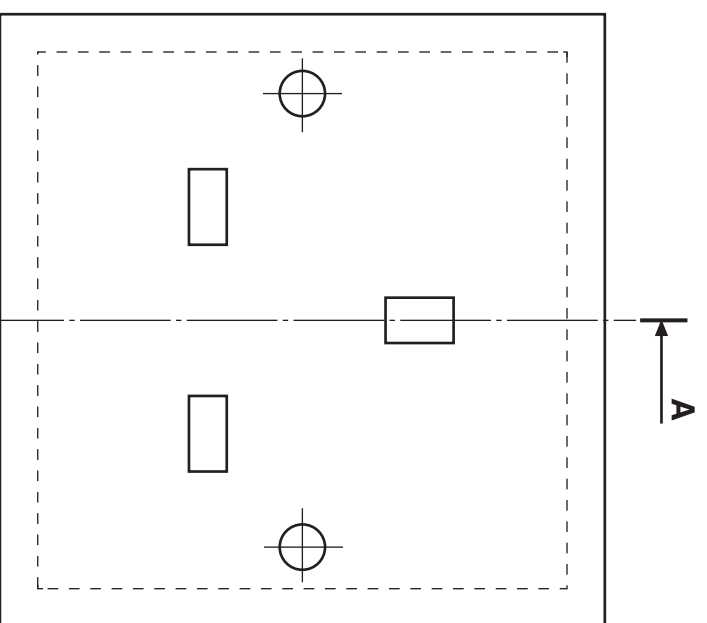
Draw a sectional end elevation on **A-A** in the position given.

Do not show hidden detail.

Total (DA 9)



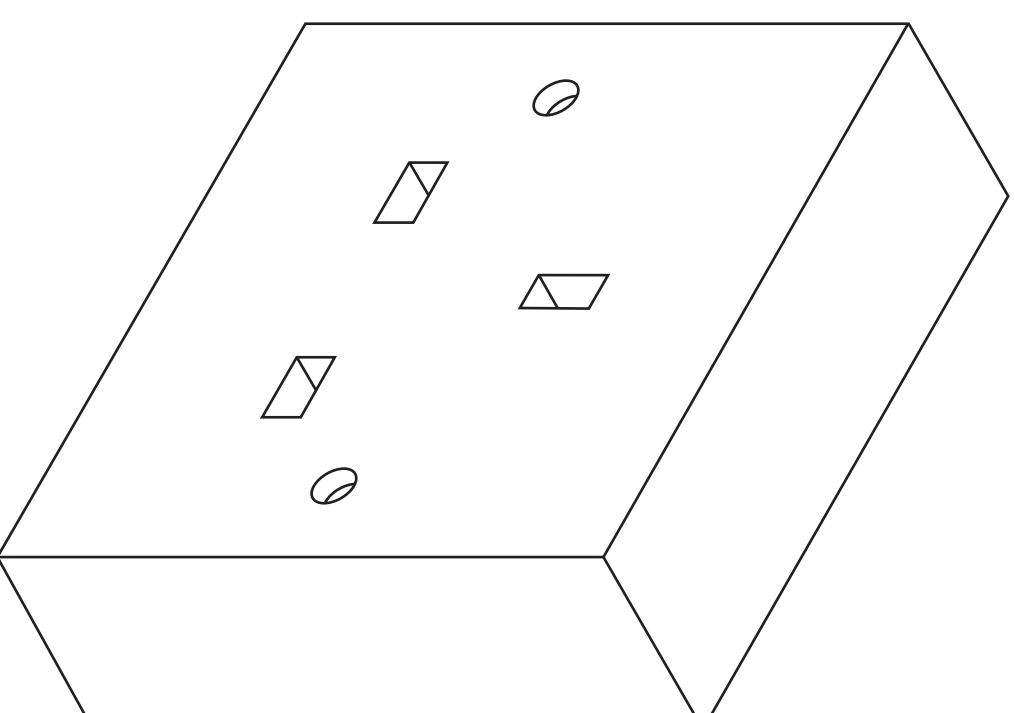
PLAN



ELEVATION



SECTIONAL END ELEVATION ON **A-A**



[BLANK PAGE]