

FOR OFFICIAL USE

--	--	--	--	--	--

--

Total Marks

# X208/101

NATIONAL  
QUALIFICATIONS  
2007

MONDAY, 28 MAY  
9.00 AM – 10.15 AM

GEOGRAPHY  
INTERMEDIATE 1

Fill in these boxes and read what is printed below.

Full name of centre

--

Town

--

Forename(s)

--

Surname

--

Date of birth

Day Month Year

--	--	--	--	--	--	--	--

Scottish candidate number

--	--	--	--	--	--	--	--	--	--

Number of seat

--

Answer **four** questions: Section A Question 1 **and** Question 2

**AND**

Section B any **two** questions from Questions 3 to 7

- 1 Read the whole of each question carefully before you answer it.
- 2 Write in the spaces provided.
- 3 Where boxes like this ☐ are provided, put a tick (✓) in the box beside the answer you think is correct.
- 4 Extra paper may be obtained from the invigilator, if required.
- 5 Before leaving the examination room you must give this book to the invigilator. If you do not, you may lose all the marks for this paper.



## SECTION A

Marks

IN THIS SECTION YOU MUST ANSWER QUESTION 1 AND QUESTION 2

## Question 1: Physical Environments

- (a) Study the Ordnance Survey Map Extract (No 1559/115).

Complete the table below by matching the glacial feature with the correct grid reference from the following list.

6461

6565

6662

6765

<i>Glacial Feature</i>	<i>Grid Reference</i>
Pyramidal peak	
Corrie lake	
U-shaped valley	

3

- (b) Choose **one** of the glacial features from Question 1(a).

**Explain** how it was formed.

You may use diagrams in your answer.

---

---

---

---

---

---

---

---

---

---

---

3

1. (continued)

Marks

- (c) There are a number of water storage areas shown on the map extract.

**Explain** why this area is suited to this type of land use.

---

---

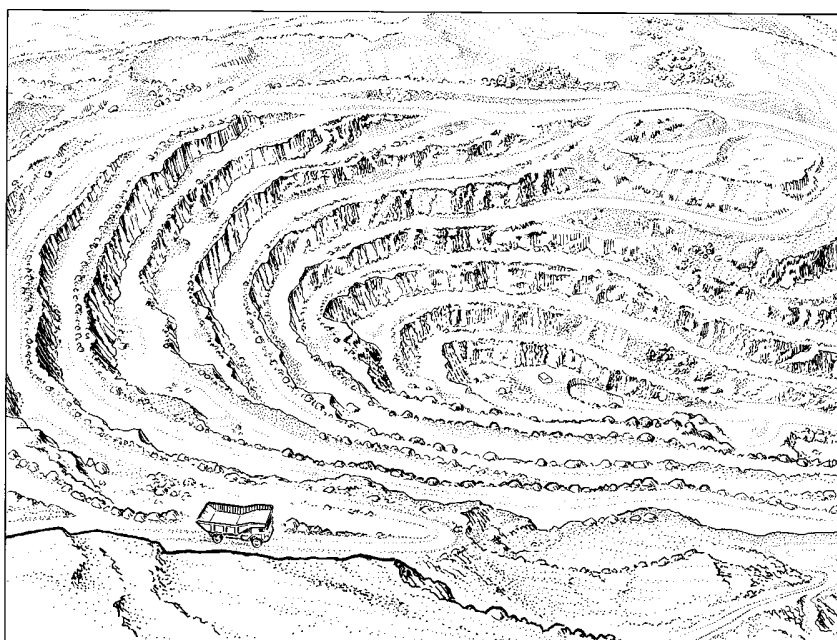
---

---

---

3

**Reference Diagram Q1A: Sketch of Penrhyn Slate Quarry,  
Grid Reference 6164**



Look at the map extract and Reference Diagram Q1A.

- (d) What are the advantages **and** disadvantages of this type of land use for the area shown on the map?

---

---

---

---

---

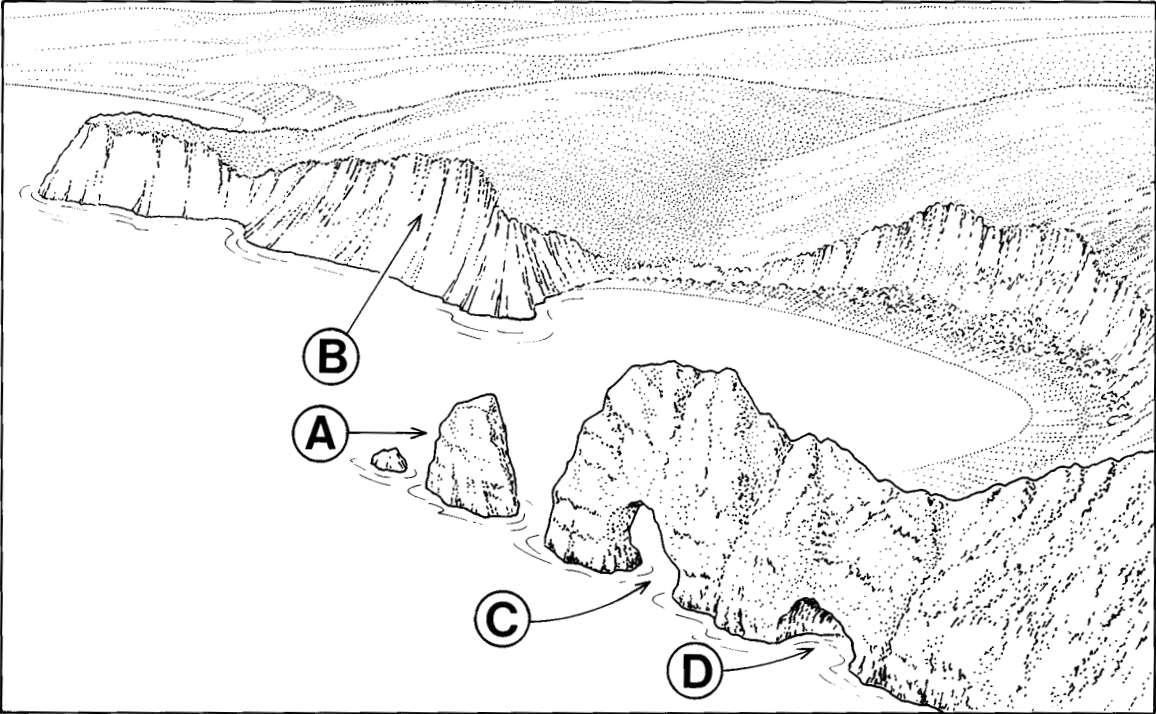
---

4

Marks

1. (continued)

Reference Diagram Q1B: Coastal Features



(e) (i) Identify the features A–D on the Reference Diagram Q1B above.

Choose from: cave arch cliff stack.

<i>Letter</i>	<i>Feature</i>
A	
B	
C	
D	

3

*Marks*

**1. (e) (continued)**

- (ii) Describe the physical processes which lead to erosion of coastlines such as shown in Reference Diagram Q1B.

---

---

---

---

---

---

---

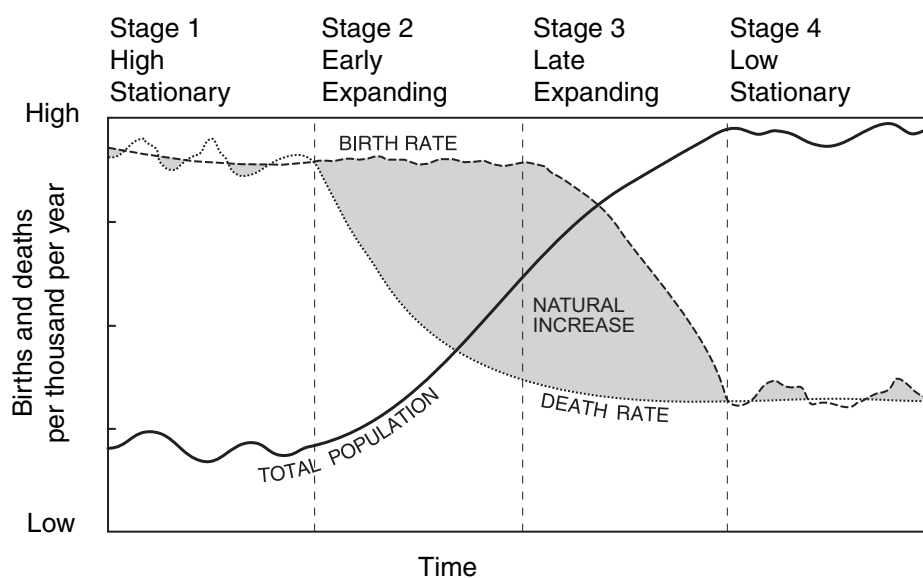
4

**Total 20**

[END OF QUESTION 1]

**NOW GO ON TO QUESTION 2**

Marks

**Question 2: Human Environments****Reference Diagram Q2A: Model of Population Change****Reference Diagram Q2B: Birth and Death Rates (per 1000) for Mauritania, West Africa**

	1975	1985	1995	2005
Births	44	43	43	43
Deaths	20	17	16	14

(a) Study Reference Diagrams Q2A and Q2B.

- (i) In which of the four stages of the model of population change should Mauritania be placed?

Give reasons for your answer.

Stage \_\_\_\_\_

Reasons \_\_\_\_\_

\_\_\_\_\_

\_\_\_\_\_

\_\_\_\_\_

3

*Marks*

**2. (a) (continued)**

- (ii) **Describe** the effects of a rapidly increasing population on countries such as Mauritania.

---

---

---

---

---

---

4

**[Turn over**

Marks

2. (continued)

**Reference Diagram Q2C: Glasgow—Redevelopment on Clydeside**



(b) Study Reference Diagram Q2C.

For Glasgow, or any other city in an Economically More Developed Country (EMDC) you have studied, describe **two** changes which have taken place in **inner city** areas **and explain** why these changes were necessary.

Changes \_\_\_\_\_

---



---



---

Explanation \_\_\_\_\_

---



---



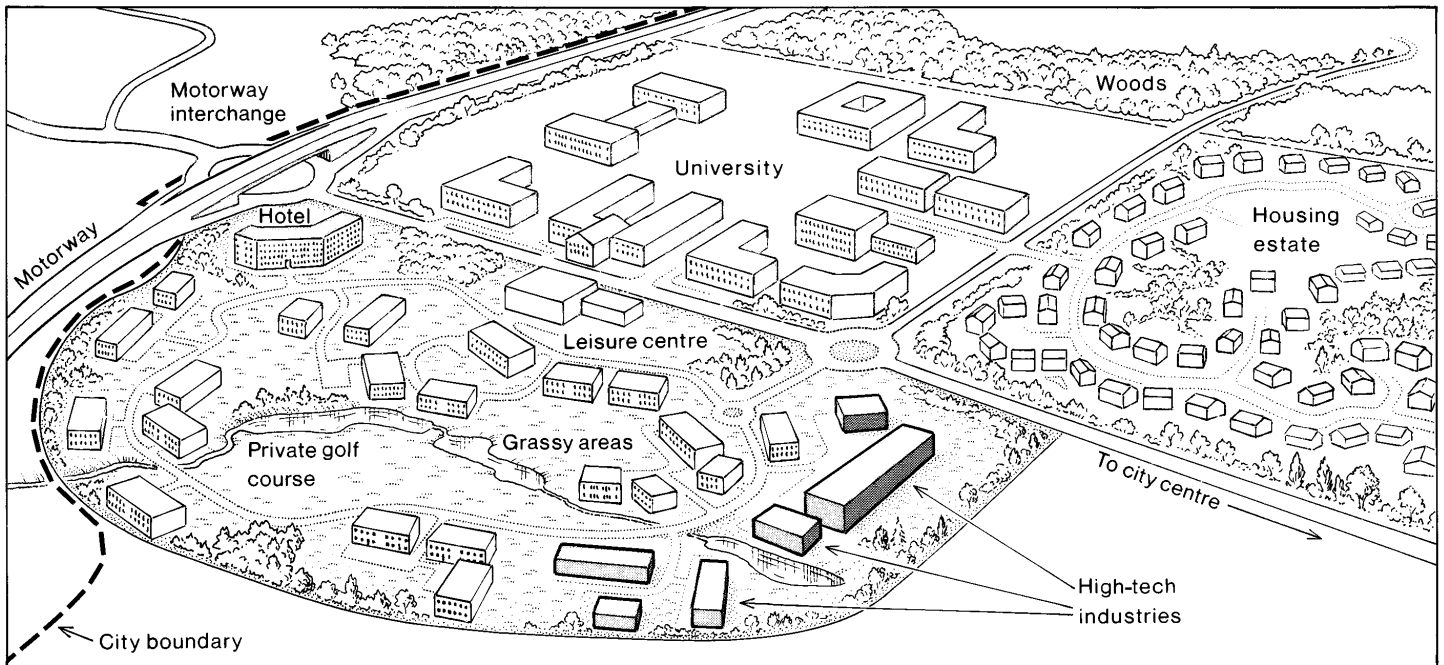
---

4



2. (continued)

Reference Diagram Q2D: Industrial Location on the Edge of a City



DO NOT  
WRITE  
IN THIS  
MARGIN

Marks

(c) Study Reference Diagram Q2D.

What are the advantages for new industries locating on the edge of cities?

---

---

---

---

---

---

---

4

[Turn over

Marks

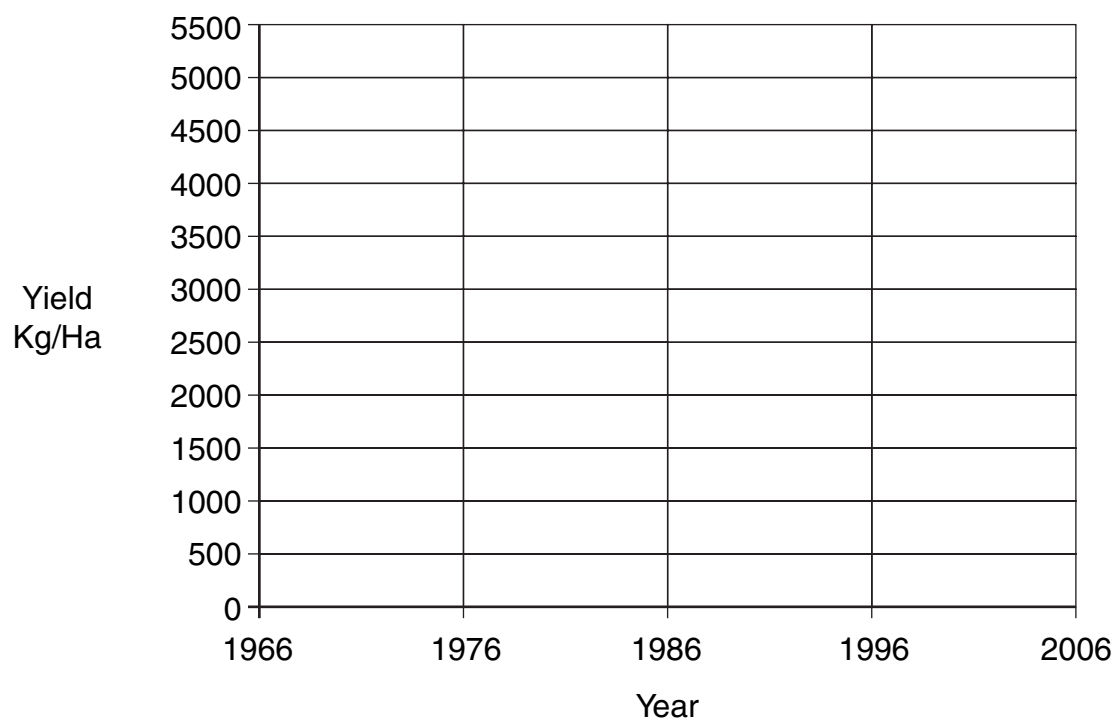
## 2. (continued)

Reference Table Q2E: Changing Rice Yields in Vietnam, South East Asia

Year	1966	1976	1986	1996	2006
Yield (Kg/Ha)*	1800	2100	2700	3500	4800

\*Kg/Ha = Kilograms per Hectare

- (d) (i) Using the data in Reference Table Q2E, draw a **line graph** on the outline below to show changing rice yields between 1966 and 2006.



2

*Marks***2. (d) (continued)**

- (ii) Suggest reasons why rice yields have increased in Economically Less Developed Countries (ELDCs), such as Vietnam, during the forty year period shown in the table.

---

---

---

---

---

**3****Total 20***[END OF SECTION A]***NOW TURN TO SECTION B AND ANSWER ANY TWO QUESTIONS**

**[BLANK PAGE]**

## **SECTION B**

### **Environmental Interactions**

**Answer any two questions from this section.**

Choose from

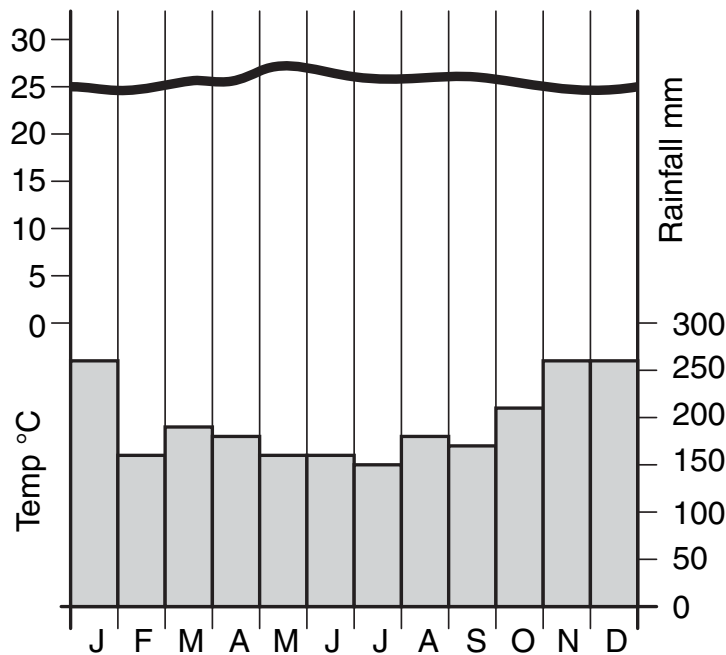
- |            |  |                  |
|------------|--|------------------|
| Question 3 | <b>Rural Land Degradation</b>              | (Pages 14 to 15) |
| Question 4 | <b>River Basin Management</b>              | (Pages 16 to 17) |
| Question 5 | <b>European Environmental Inequalities</b> | (Pages 18 to 19) |
| Question 6 | <b>Development and Health</b>              | (Pages 20 to 21) |
| Question 7 | <b>Environmental Hazards</b>               | (Pages 22 to 23) |

**[Turn over**

Question 3: Rural Land Degradation

Marks

Reference Diagram Q3A: Climate Graph—Manaus, Brazil



(a) Study Reference Diagram Q3A.

**Describe** in detail the climate of this tropical rainforest area.

---

---

---

---

---

3

(b) “Forests are being destroyed at an alarming rate in many countries.”

Greenpeace Spokesperson

For any area you have studied, **describe** the effects of deforestation.

---

---

---

---

---

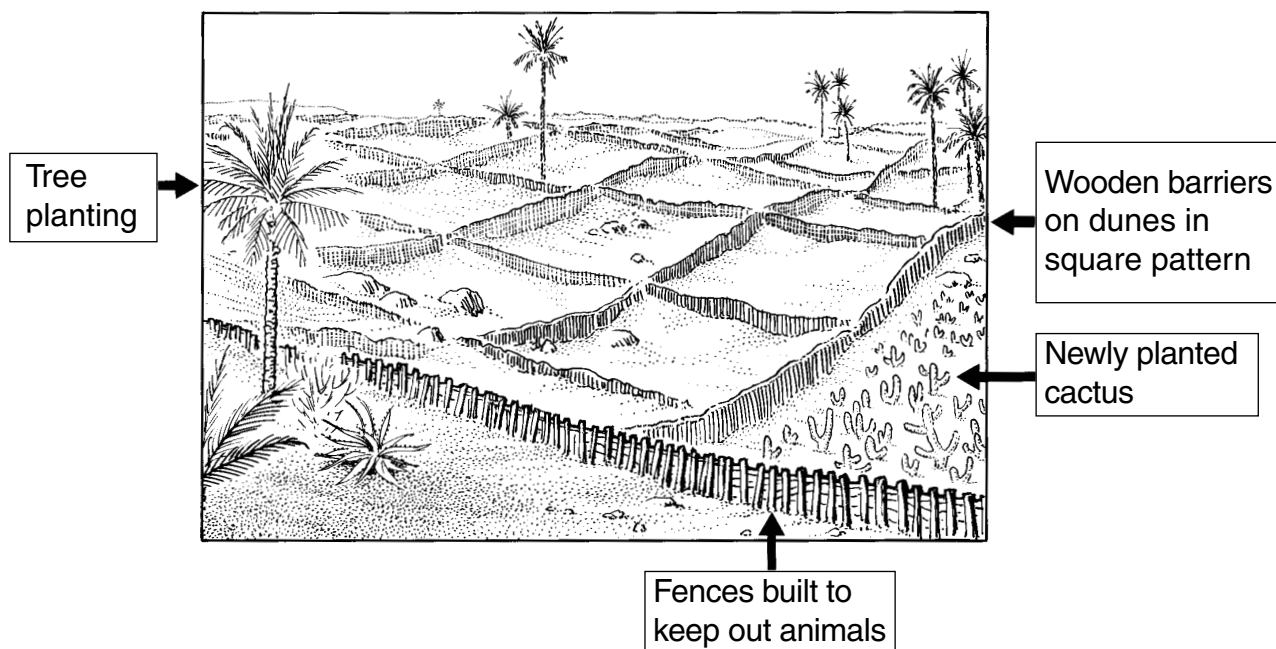
---

4

Marks

3. (continued)

**Reference Diagram Q3B: Methods of reducing Desertification**



(c) Study Reference Diagram Q3B.

**Explain** how the methods shown help to reduce desertification.

---



---



---



---



---

3

**Total 10**

[Turn over

Marks

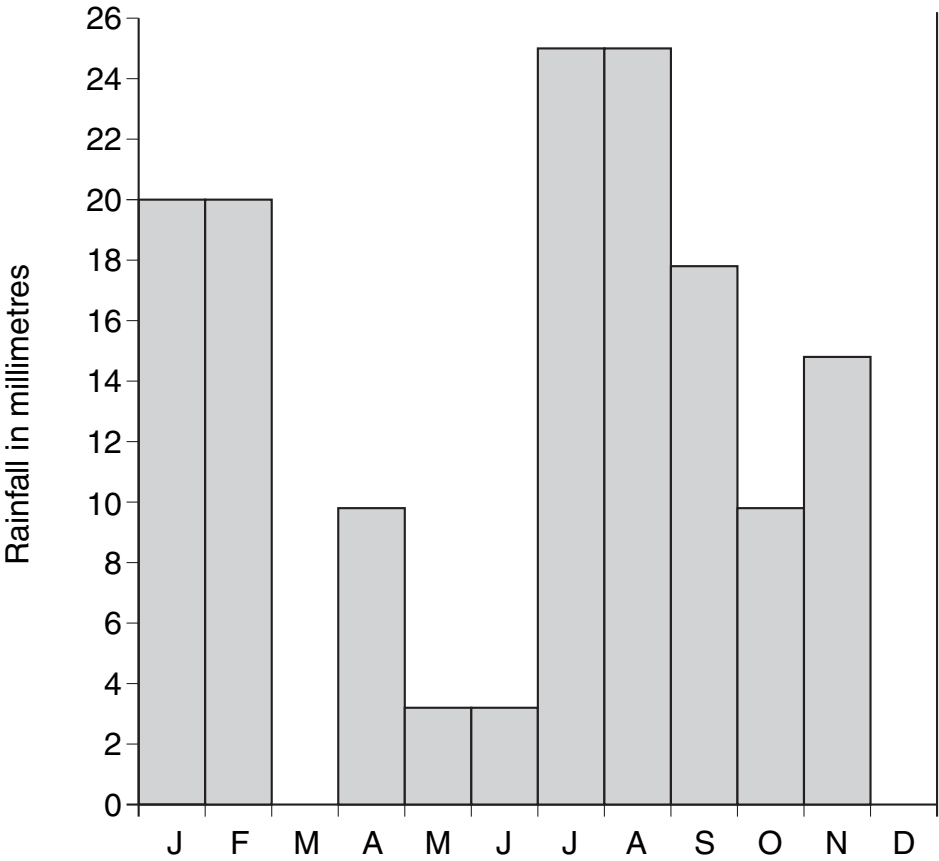
**Question 4: River Basin Management**

**Reference Diagram Q4A: Monthly Rainfall Figures for Phoenix, Arizona, USA**

January	20 mm
February	20 mm
March	18 mm
April	10 mm
May	3 mm
June	3 mm
July	25 mm
August	25 mm
September	18 mm
October	10 mm
November	15 mm
December	23 mm

- (a) Study Reference Diagram Q4A.  
Use the figures to complete the rainfall bar chart for March and December.

**Rainfall in Arizona**



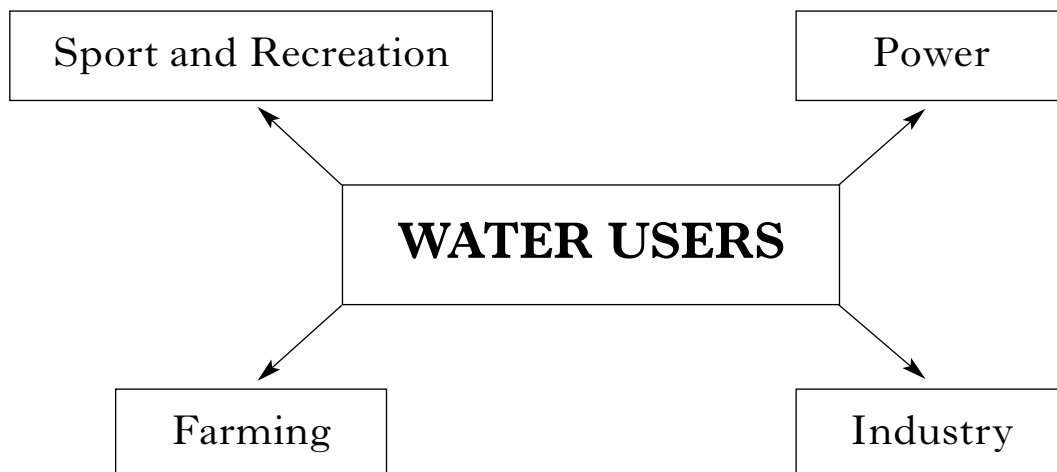
2



4. (continued)

DO NOT  
WRITE  
IN THIS  
MARGIN

Reference Diagram Q4B: Water Users in the Colorado River Basin



Marks

Study Reference Diagram Q4B above.

- (b) For the Colorado, or any other river you have studied, select **two** water users and **explain** why they need water.

Water User 1 \_\_\_\_\_

---



---



---

Water User 2 \_\_\_\_\_

---



---



---

4

- (c) For any river basin you have studied, **describe** the **disadvantages** of having water control projects.

---



---



---



---



---



---

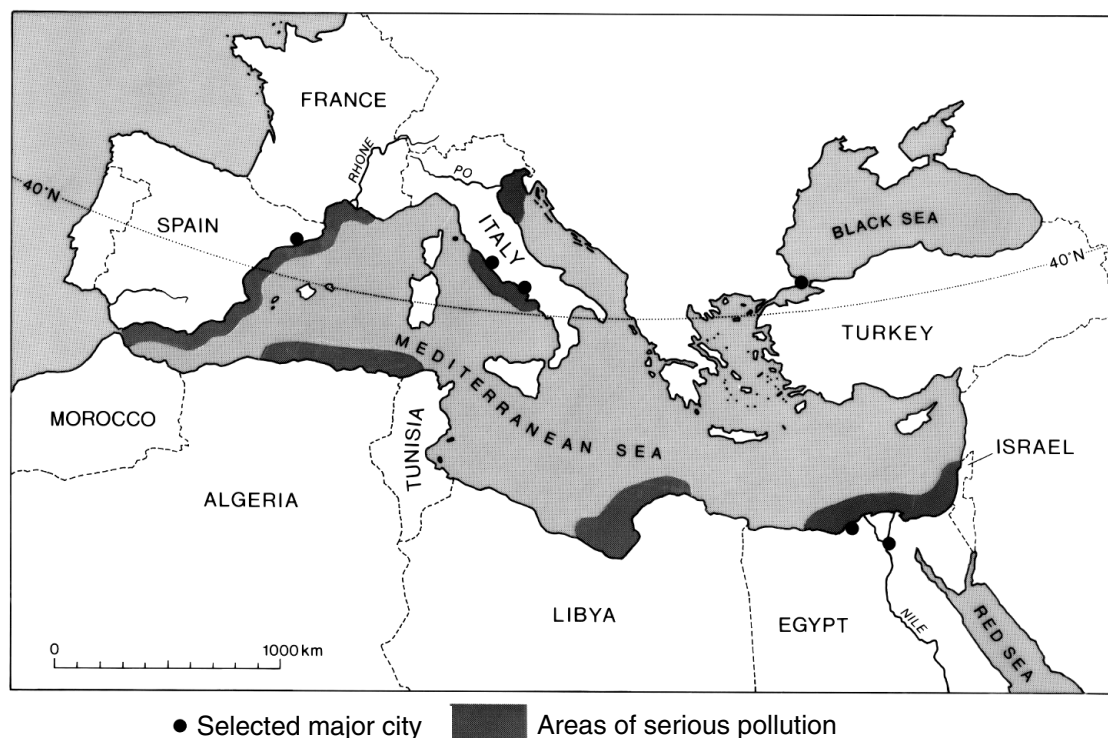
4

Total 10

Marks

# Question 5: European Environmental Inequalities

Reference Map Q5A: Pollution in the Mediterranean Sea



(a) Study Reference Map Q5A.

Describe the pattern of pollution in the Mediterranean Sea.

---

---

---

---

---

---

3

Marks

## 5. (continued)

## Reference Diagrams Q5B: European River Landscapes



Lower Rhine



Upper Rhine

## (b) Study Reference Diagrams Q5B.

For the rivers above, or any two European rivers which you have studied (at least one of which must be from mainland Europe), **explain** the difference in their environmental quality.

---

---

---

---

---

---

---

4

(c) For **either** a sea/coastal area **or** mountain area you have studied, **describe** steps taken to improve its environmental quality.

---

---

---

---

---

3

Total 10

*Marks***Question 6: Development and Health****Reference Diagram Q6: Indicators of Development for selected Countries**

<b>Indicator</b>	<b>China</b>	<b>Malawi</b>
GDP per capita (US dollars)	5600	600
Life expectancy (years)	72	37
Infant mortality rate (per 1000 live births)	24	103
Birth rate (per 1000)	13	44

(a) Study Reference Diagram Q6.

- (i) From Reference Diagram Q6 give an example of an **economic** indicator.

---

**1**

- (ii) Which of the two countries in the table is more economically and socially developed?

---

**1**

- (iii) Give **two** reasons for your choice.

---



---



---



---



---

**2**

*Marks*

**6. (continued)**

- (b) (i) What are the major causes of **either** AIDS **or** Malaria?

Disease \_\_\_\_\_

Causes \_\_\_\_\_

---

---

---

---

---

**3**

- (ii) For the disease you chose in (i), **describe** the problems it could cause for a country in which it is widespread.

---

---

---

---

---

**3**

**Total 10**

**[Turn over**

*Marks*

**Question 7: Environmental Hazards**

**Reference Diagram Q7**



- (a) Study Reference Diagram Q7.  
What causes a volcanic eruption?

---

---

---

---

---

4

*Marks*

**7. (continued)**

(b) What methods are used to predict tropical storms?

---

---

---

---

---

**3**

(c) For a tropical storm you have studied, how effective were the predictions in reducing the impact of the storm on local people?

---

---

---

---

---

---

---

**3**

**Total 10**

[END OF QUESTION PAPER]

**[BLANK PAGE]**