

1260/31/01

NATIONAL
QUALIFICATIONS
2012

TUESDAY, 8 MAY
1.00 PM – 3.00 PM

GEOGRAPHY
STANDARD GRADE
Credit Level

All questions should be attempted.

Candidates should read the questions carefully. Answers should be clearly expressed and relevant.

Credit will always be given for appropriate sketch-maps and diagrams.

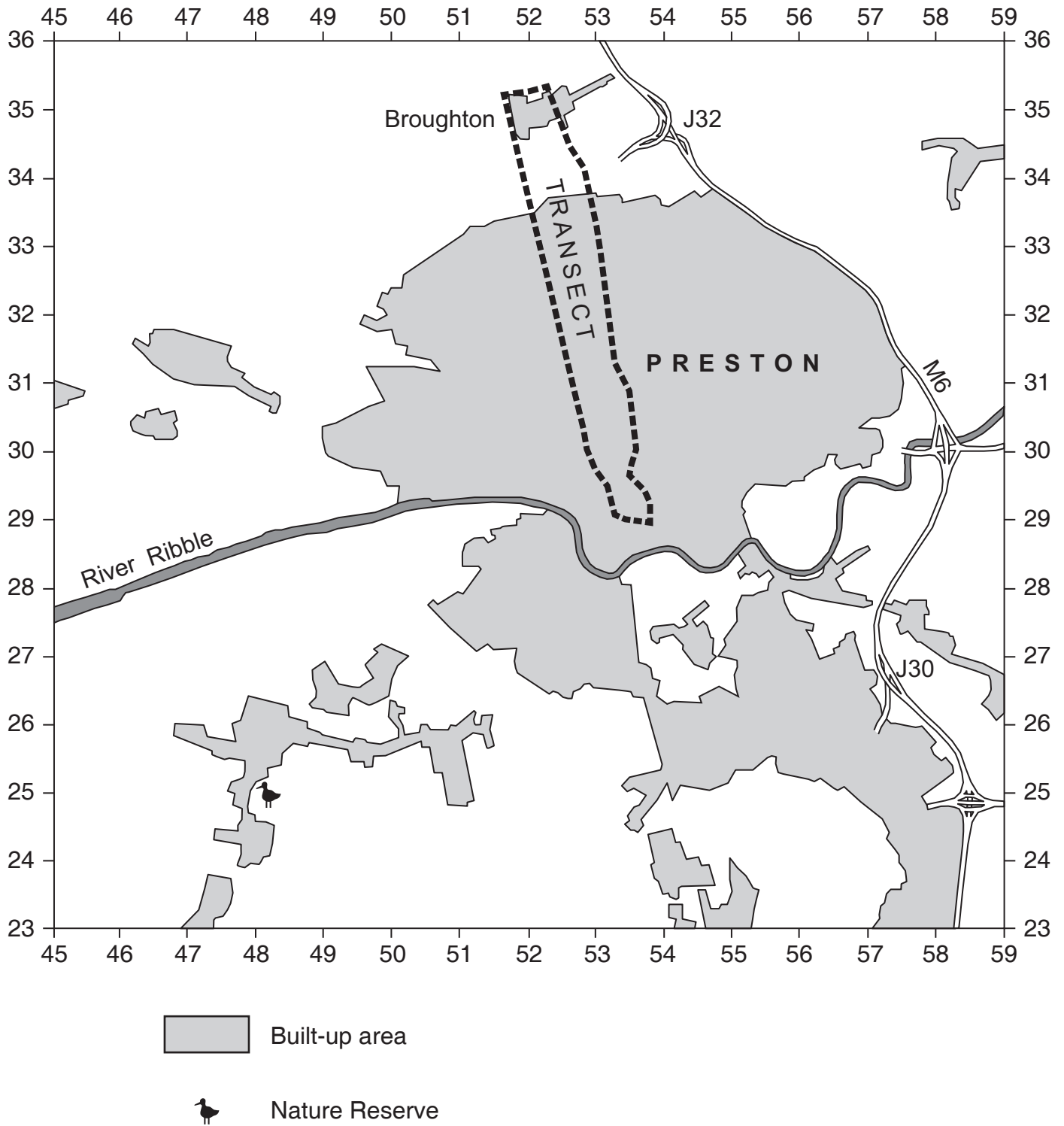
Write legibly and neatly, and leave a space of about one centimetre between the lines.

All maps and diagrams in this paper have been printed in black only: no other colours have been used.



1.

Diagram Q1A



1. (continued)

This question refers to the OS Map (No 1938/102) of the Preston area and to Diagram Q1A on *Page two*.

- (a) Describe the **physical** features of the River Ribble **and** its valley from 590305 to 450277.

4

- (b) There is an industrial estate at 5725 (Walton Summit).

What are the advantages **and** disadvantages of this location for an industrial estate?

Use map evidence to support your answer.

5

- (c) There is a nature reserve around 480250.

Is this a suitable site for a nature reserve?

Give reasons for your answer.

4

- (d) Find the M6 east of Preston.

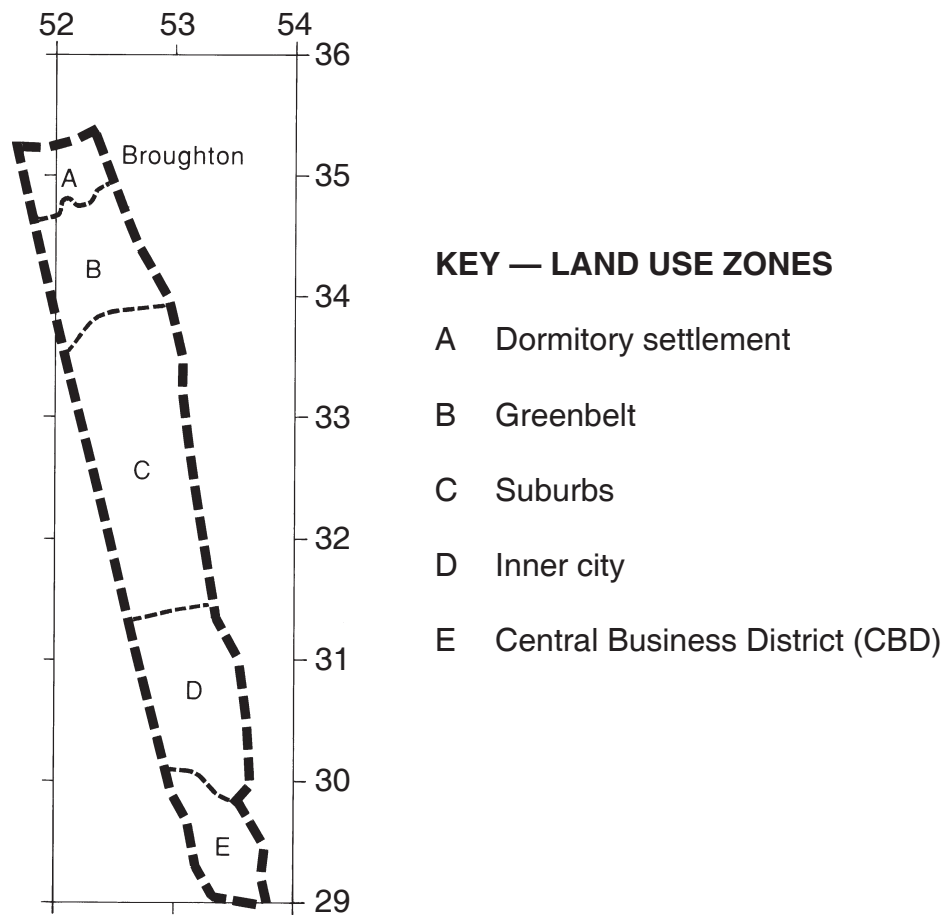
How did road engineers overcome the problems caused by the landscape between Junction 30 (5726) and Junction 32 (5434)?

4

[Turn over

1. (continued)

Diagram Q1B: Land Use Transect



(e) A group of school pupils has carried out fieldwork along the transect shown on Diagrams Q1A and Q1B.

They have correctly identified the land use zones shown on Diagram Q1B.

Referring to at least **three** zones, give map evidence to support the pupils' findings.

6

(f) **“A dormitory settlement is a community where most of the residents travel to work in a larger settlement.”**

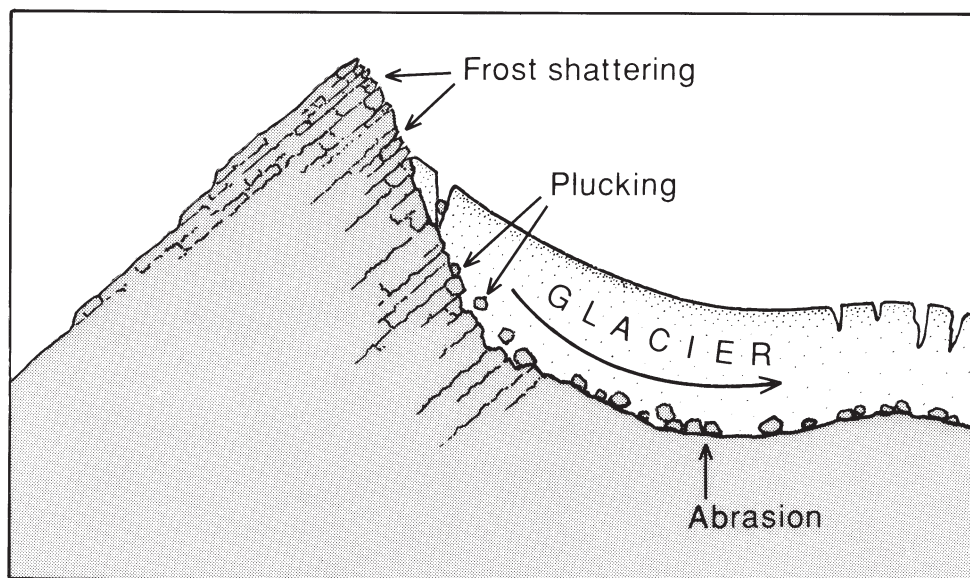
What gathering techniques might the pupils have used to prove that Broughton is a dormitory settlement?

Give reasons why these techniques would have been appropriate.

5

2.

Diagram Q2: The Formation of a Corrie



Look at Diagram Q2.

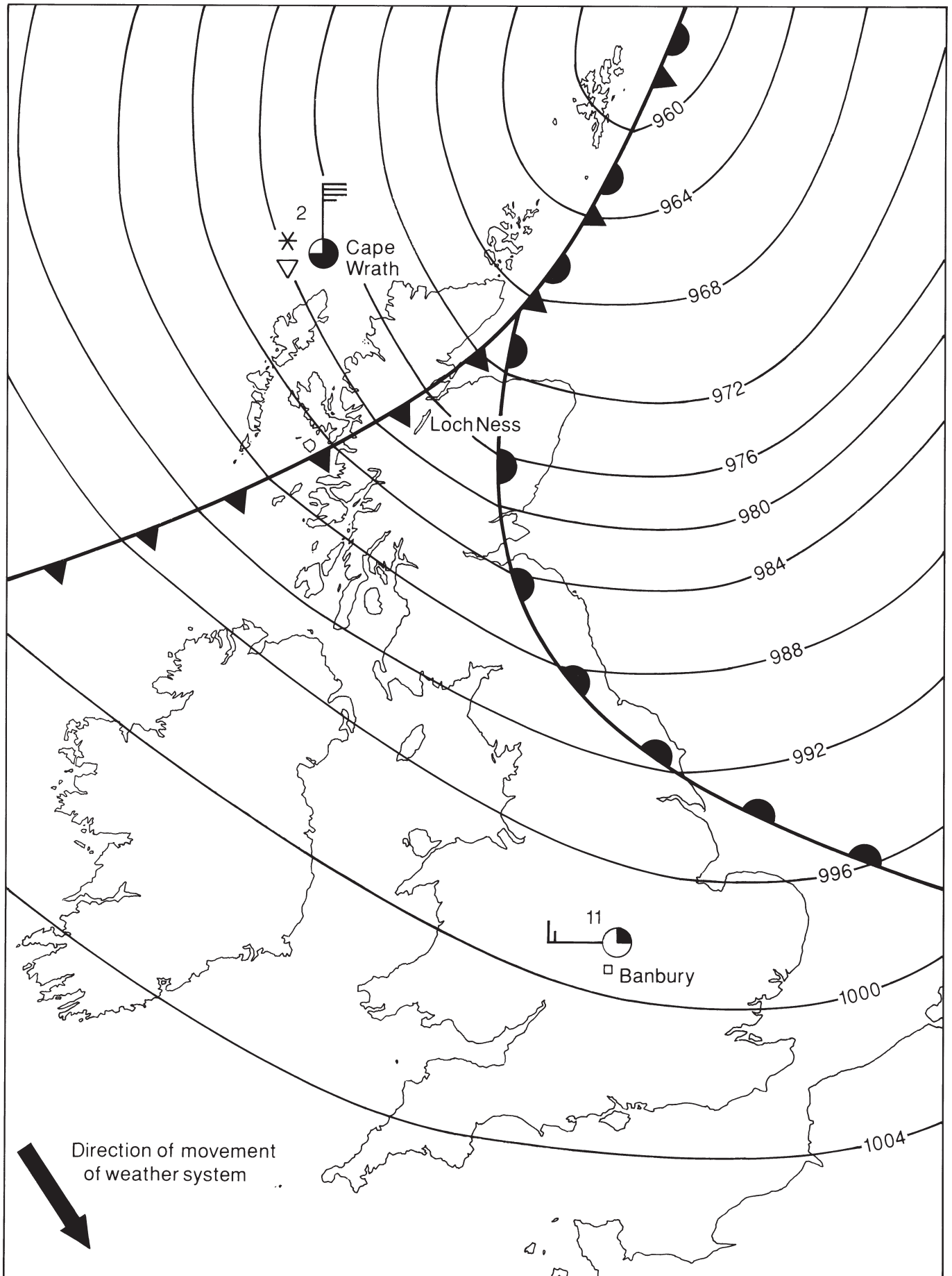
Explain, in detail, how the processes shown in the diagram produce a corrie.

5

[Turn over

3.

Diagram Q3: Synoptic Chart, 0800 hours, 10 March



3. (continued)

Look at Diagram Q3

- (a) **Describe, in detail**, the differences in the weather conditions between Cape Wrath and Banbury at 0800 hours on 10 March.

4

- (b) At 0800 hours on 10 March a group of secondary school pupils are about to set off on a walk into the mountains near Loch Ness.

Do you think they should go ahead with the walk?

Give reasons for your answer.

4

[Turn over

4. **Diagram Q4A: Possible Sites for Marine National Parks**

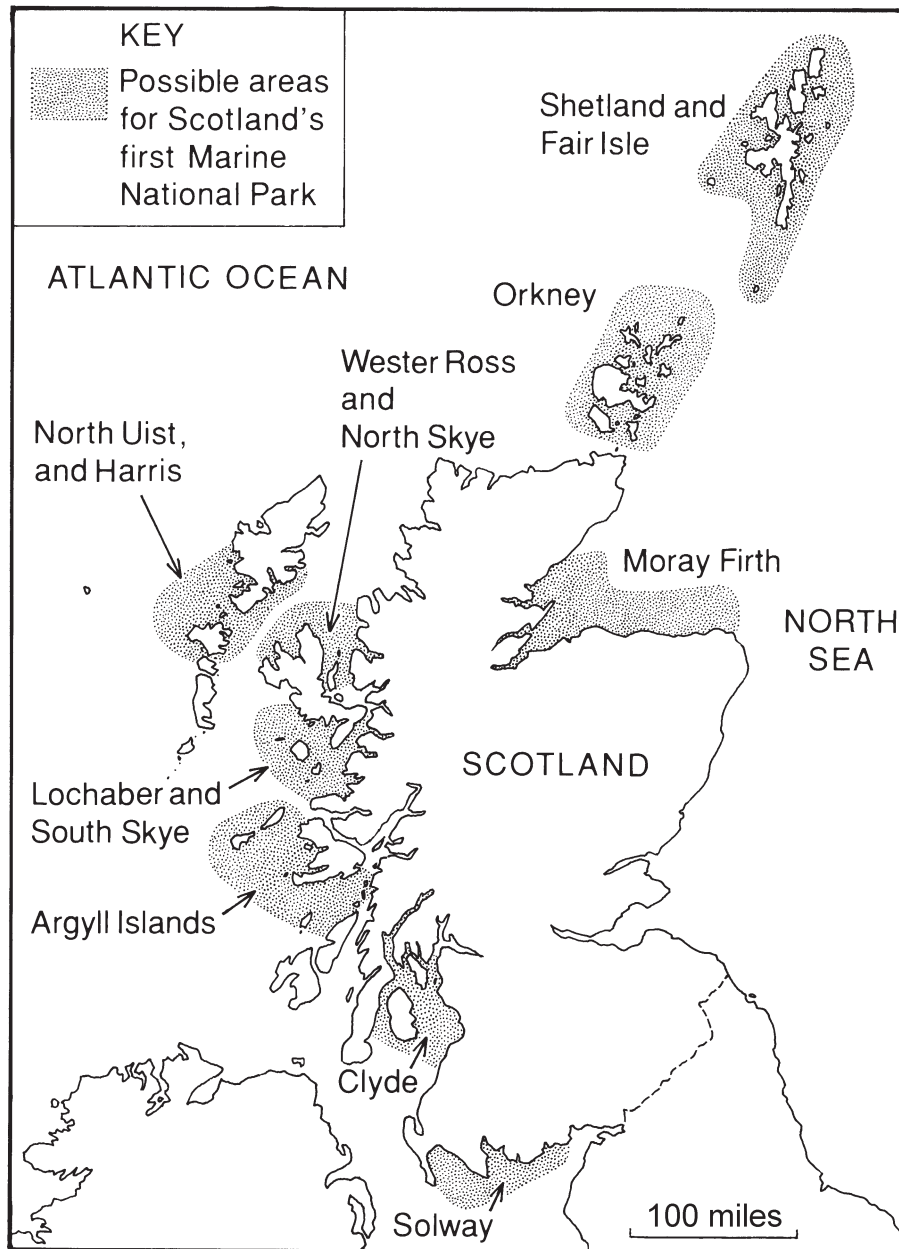
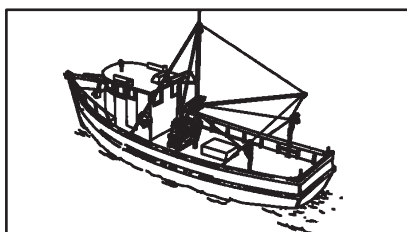
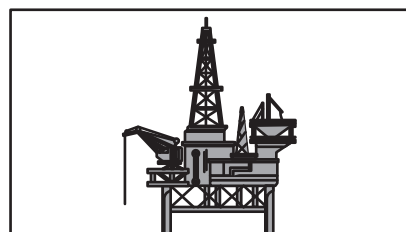


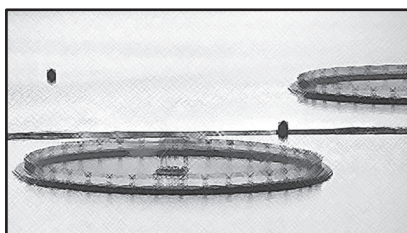
Diagram Q4B: Selected Marine Industries in the Seas around Scotland



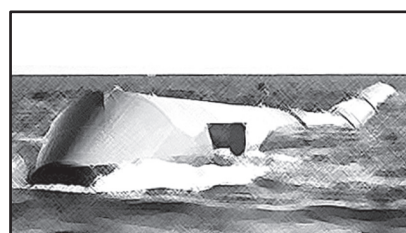
fishing



oil drilling



fish farming



wave and tidal energy schemes

4. (continued)

Diagram Q4C: Views about Scotland's First Marine National Park



Oil worker



Environmental protesters

Study Diagrams Q4A, Q4B and Q4C.

There is a plan to establish at least one Marine National Park in the seas around the coast of Scotland.

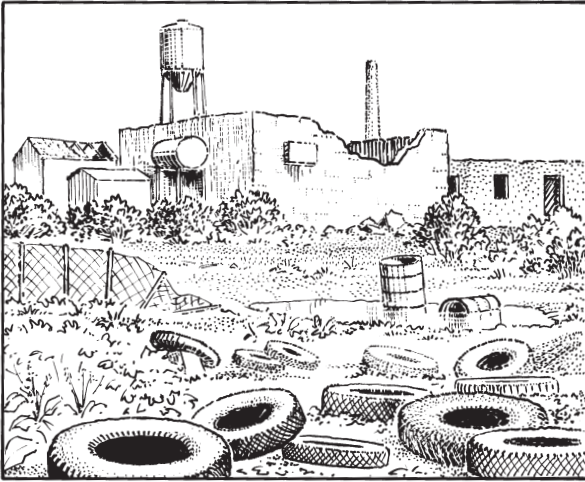
What are the advantages **and** disadvantages of this plan?

6

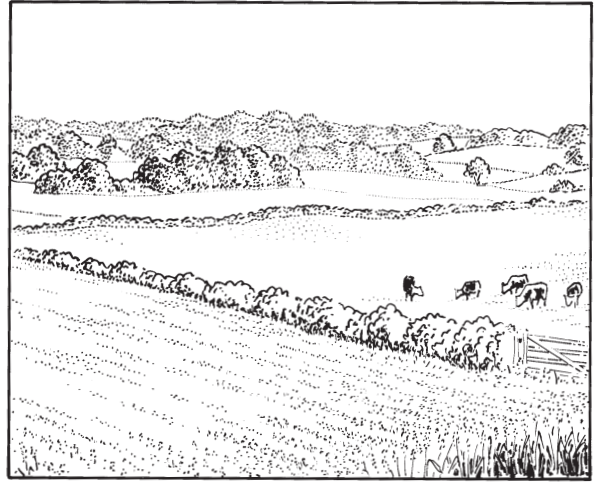
[Turn over

5. **Diagram Q5: Two possible Sites for a Housing Development**

Brownfield



Greenfield



Study Diagram Q5 above.

On which site would it be better to build a new housing development?

Give reasons for your answer.

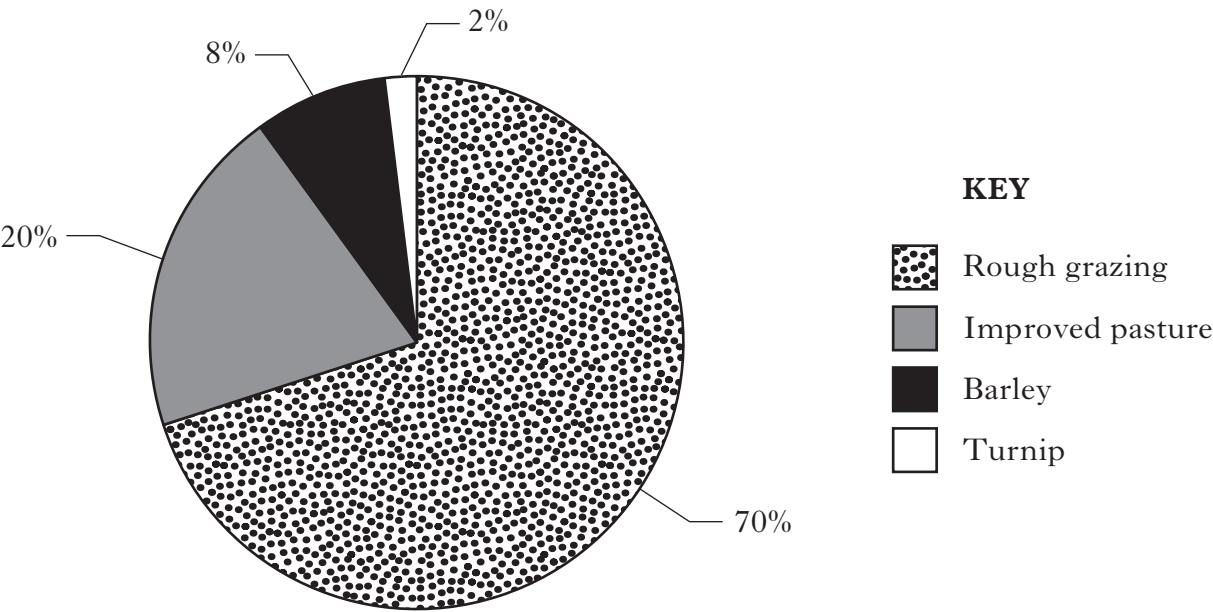
5

6.

Diagram Q6A: A Lake District Farm



Diagram Q6B: Land Use on the Farm



Look at Diagrams Q6A and Q6B.
Explain the land use on the farm.

6

[Turn over

KU	ES
	5

7. **Diagram Q7: Changing Employment Structures in the UK, 1910–2010**

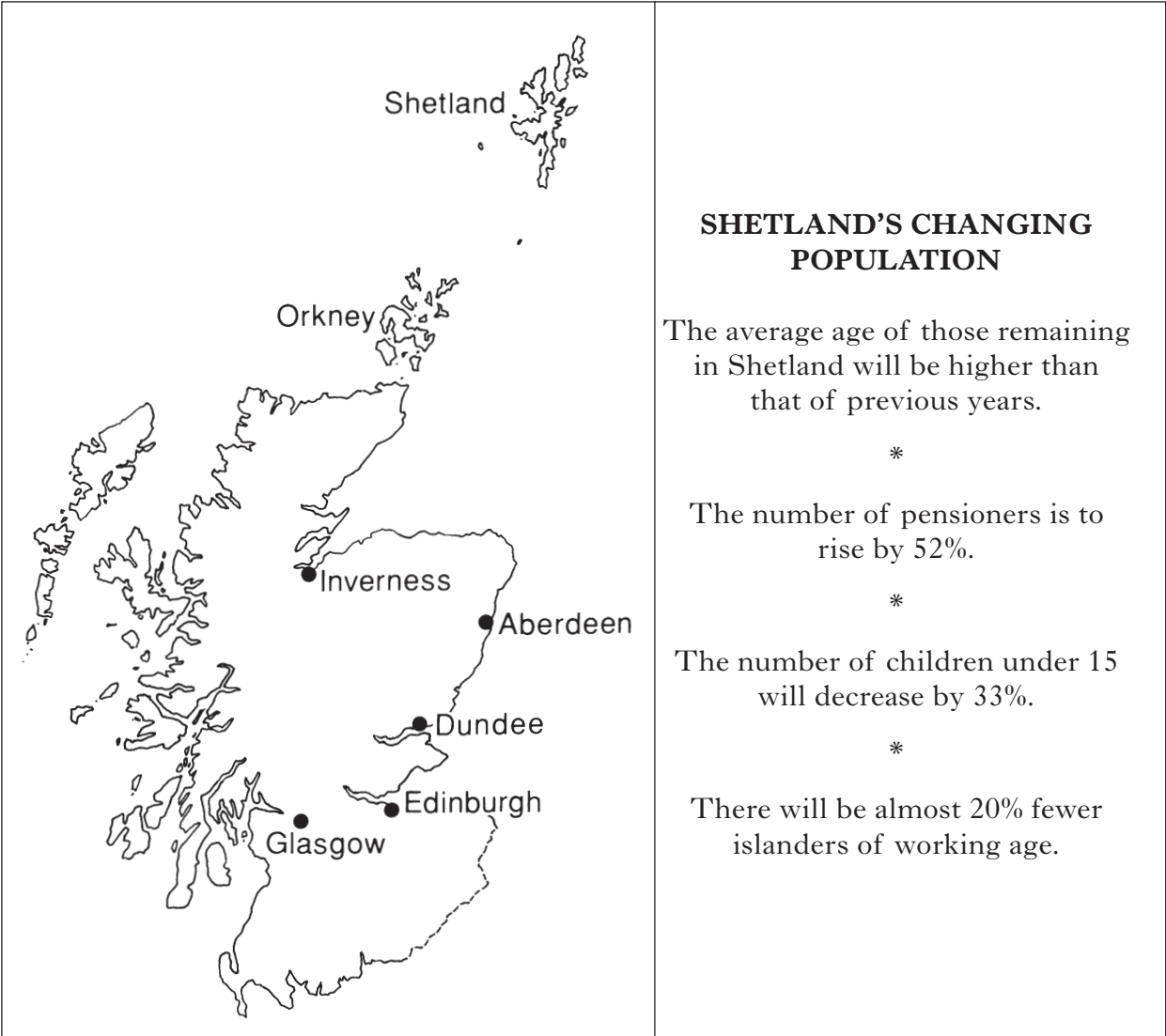
	Primary %	Secondary %	Tertiary %
1910	15	55	30
1960	5	49	46
2010	2	29	69

Look at Diagram Q7.

What **other** techniques could be used to process this information?

Give reasons for your choices.

8. **Diagram Q8: Extract from Local Newspaper**



Look at Diagram Q8.

Describe the social **and** economic effects these changes will have on remote areas such as Shetland.

5

[Turn over

9. **Diagram Q9: European Union Member Countries**



Look at Diagram Q9.

“The European Union continues to grow.”

What are the advantages to countries of joining the European Union (EU)?

4

10.

Diagram Q10: Fairtrade Products



Look at Diagram Q10.

Explain the benefits of Fairtrade for Developing Countries.

4

[Turn over for Question 11 on *Page sixteen*]

11. **Diagram Q11: Different Types of Aid in Developing Countries**

Bilateral Aid	Charity Aid
Tied aid	No conditions
Provides large loans	No loans or debts
Requires repayments	Depends on donations
Leads to increased trade	Provides experienced field workers
Improves links with donor countries	Non-political
Used for agreed projects	Supports small-scale self-help schemes

Look at Diagram Q11.

“Bilateral Aid is better for Developing Countries than aid from charities.”

Do you agree fully with this statement?

Give reasons for your answer.

4

[END OF QUESTION PAPER]

ACKNOWLEDGEMENTS

Question 10—Image of Fairtrade logo. Reproduced by kind permission of the Fairtrade Foundation. ©