

FOR OFFICIAL USE

--	--	--	--	--	--

F

KU EV

Total

--	--

0580/401

NATIONAL
QUALIFICATIONS
2007

TUESDAY, 8 MAY
9.00 AM – 10.00 AM

CONTEMPORARY
SOCIAL STUDIES
STANDARD GRADE
Foundation Level

Fill in these boxes and read what is printed below.

Full name of centre

Town

Forename(s)

Surname

Date of birth

Day Month Year

--	--	--	--	--	--	--	--

Scottish candidate number

--	--	--	--	--	--	--	--	--	--

Number of seat

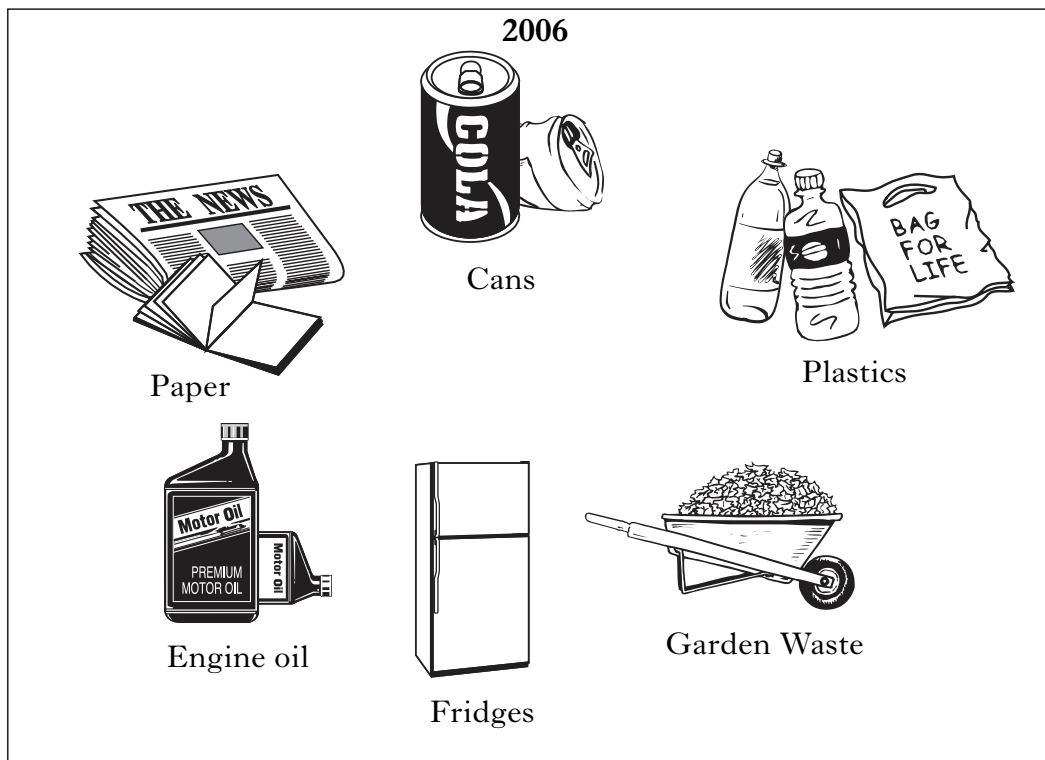
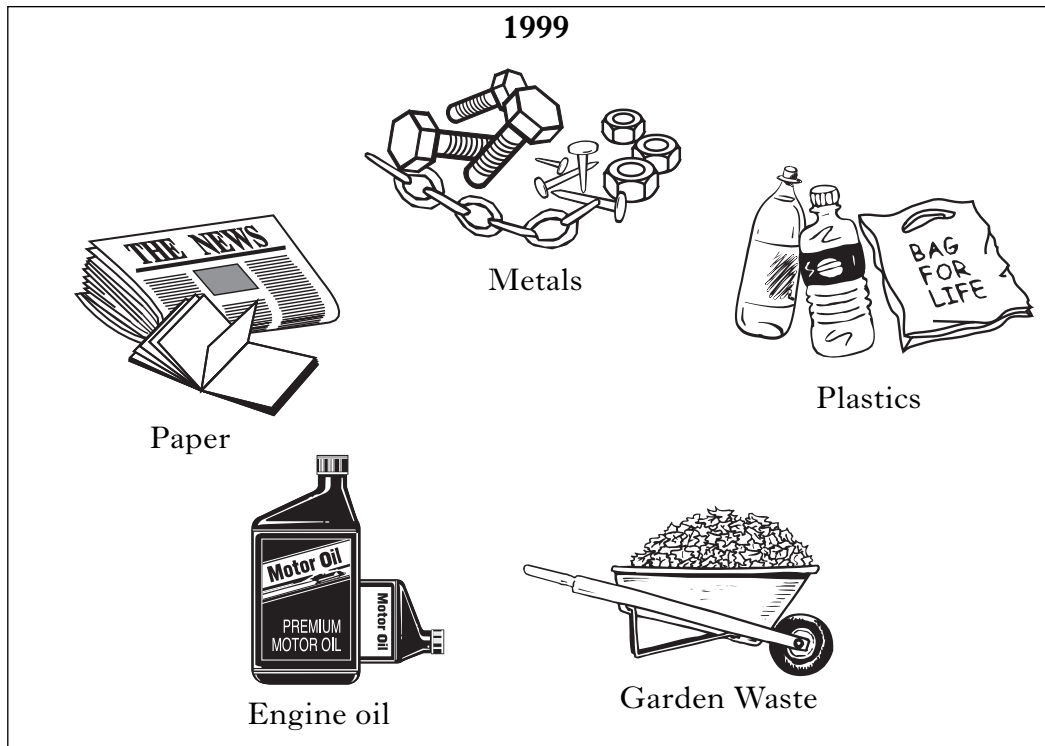
- 1 All questions should be attempted.
- 2 Write your answers in the spaces provided in this book.
- 3 Answer in sentences wherever possible.
- 4 Before leaving the examination room you must give this book to the invigilator. If you do not, you may lose all the marks for this paper.



THE ENVIRONMENT

1. Look at the sources below.

They show things brought to a council recycling point in 1999 and 2006.



Marks

1. (continued)

(a) From the sources, give two **changes** between 1999 and 2006.

Change 1 _____

Change 2 _____

(b) Recycling helps reduce damage to the environment.

From your own knowledge, give **two** ways in which people can **damage** the environment.

Choose from the list below. Put a tick (✓) in the boxes beside your two choices.

Ways that people can damage the environment	Tick (✓) if correct
Using chemical fertilisers on farms.	
Creating National Parks.	
Using public transport instead of cars.	
Dumping sewage in the sea.	
Planting trees.	

KU	EV
----	----

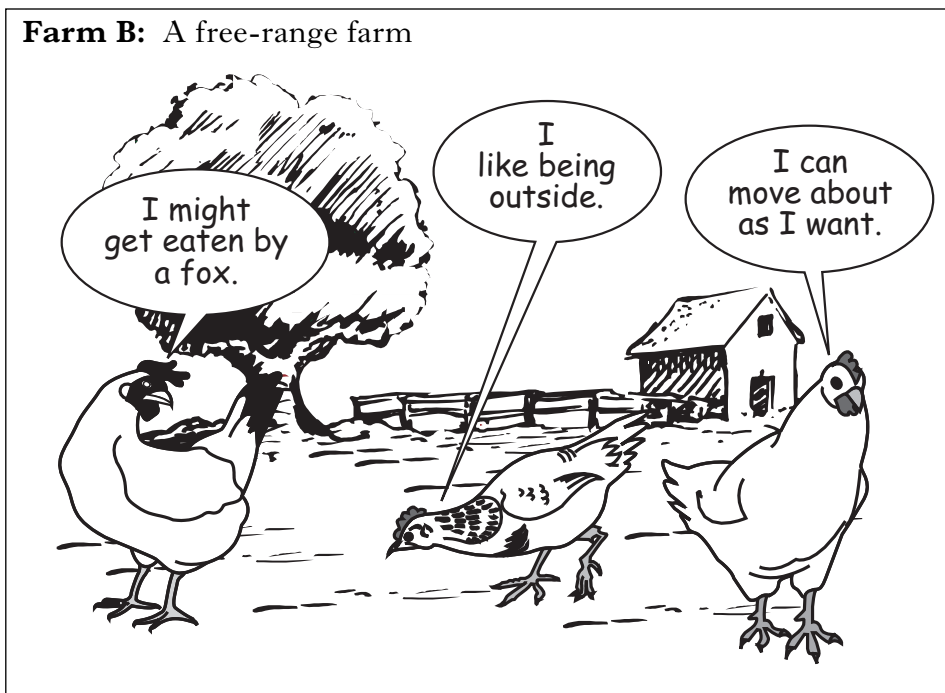
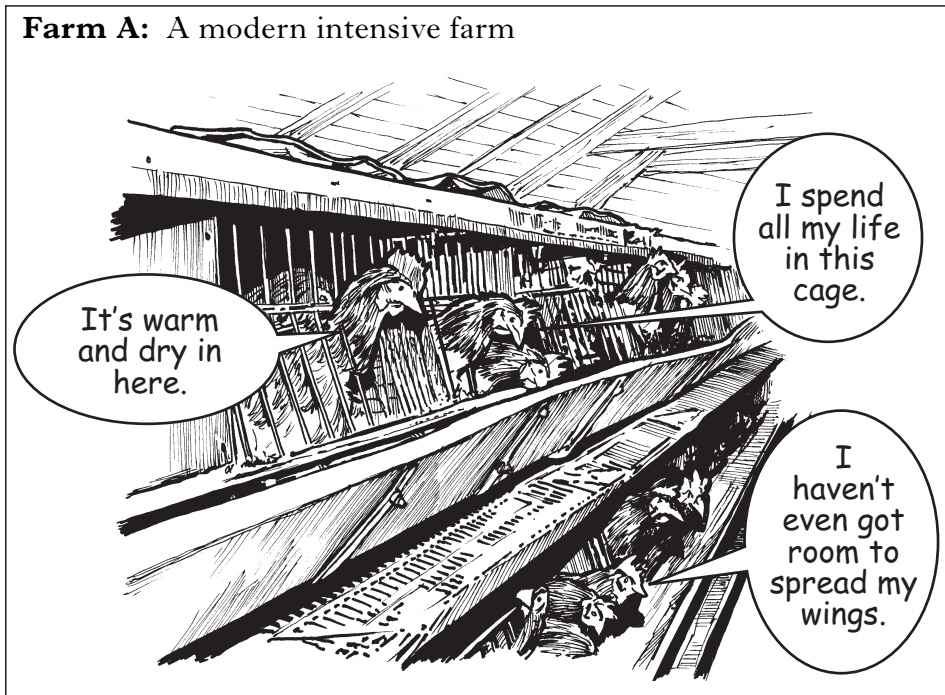
4

4

[Turn over

2. Look at the sources below.

They show the way hens are looked after on two different farms.



(a) From the sources, give **two** reasons why animal rights groups prefer free-range farms.

Reason 1 _____

Reason 2 _____

2. (continued)

(b) From your own knowledge, give **two** disadvantages **to the environment** of using pesticide sprays on farms.

Choose from the list below. Put a tick (✓) in the boxes beside your two choices.

Disadvantages to the environment	Tick (✓) if correct
Sprays might poison the farmer.	
Fish in nearby streams might die.	
Chemicals are very expensive.	
Birds have fewer insects to eat.	
Farmers need special machinery.	

KU	EV
----	----

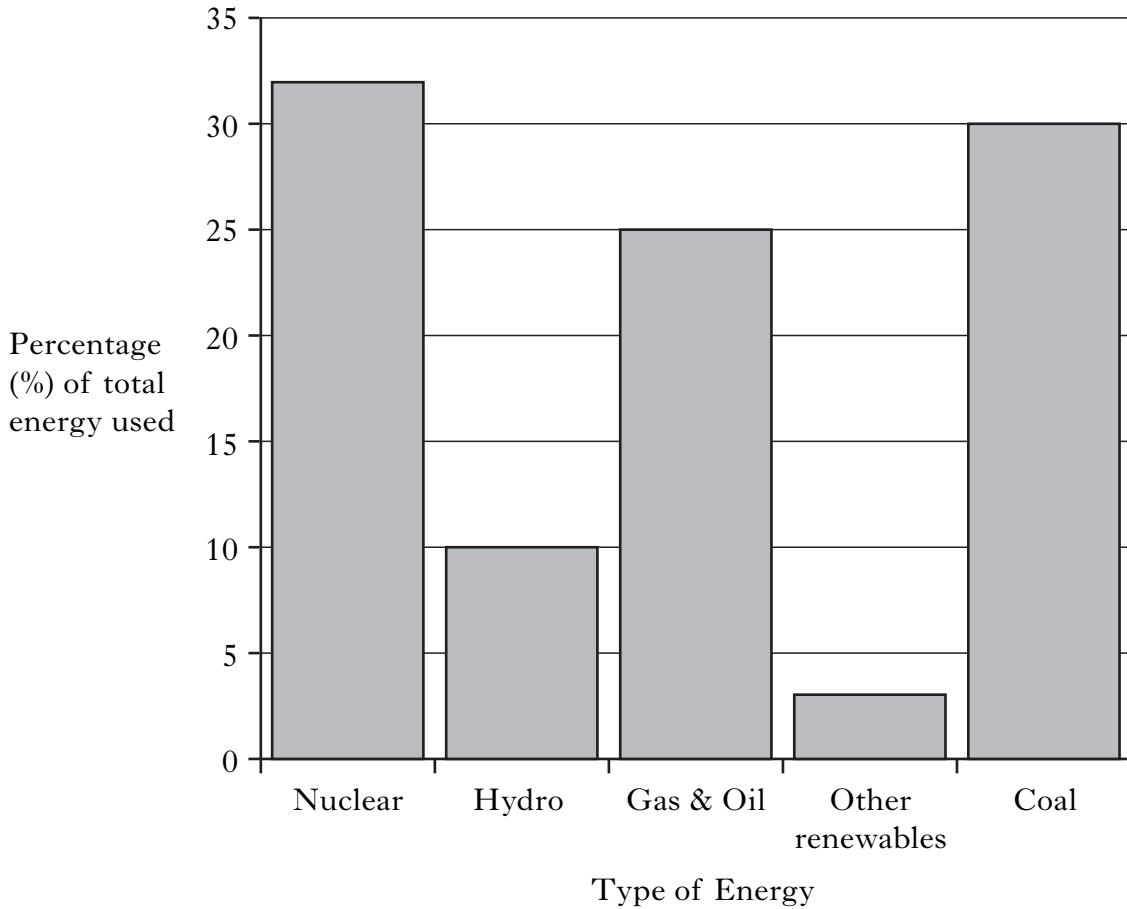
4

[Turn over

Marks

3. Look at the source below.

The graph shows the different types of energy used to generate electricity in Scotland.



(a) Using the source, fill in the spaces to complete the summary below.

The type of energy which produces most electricity is _____

and the least is produced by _____ .

Only 10% of electricity is produced by _____ .

Gas and oil produce _____ % of Scotland's electricity.

4

3. (continued)

(b) From your own knowledge, give **one** example of **renewable** energy.

Choose from the list below. Put a tick (✓) in the box beside your choice.

Type of energy	Tick (✓) if renewable
Oil	
Wind	
Gas	
Coal	

2

(c) Some people think that **nuclear** energy may become more important in the future.

From your own knowledge, give **one** possible reason for this.

Choose from the list below. Put a tick (✓) in the box beside your choice.

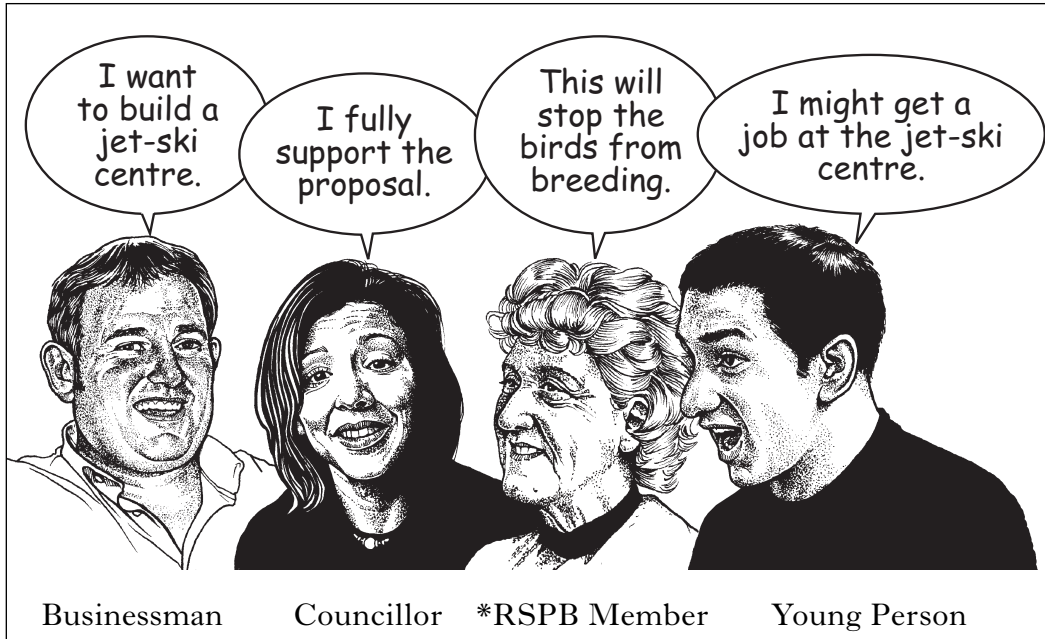
Reason	Tick (✓) if correct
Nuclear energy uses uranium.	
Nuclear energy is safer to produce.	
Nuclear energy produces radioactive waste.	
Nuclear energy produces no greenhouse gases.	

2

[Turn over

4. Look at the source below.

It shows people talking about a Scottish loch which is an important home for rare birds. There is a plan to build a jet-ski centre on the loch.



*RSPB = Royal Society for the Protection of Birds

(a) From the source, give **one** advantage and **one** disadvantage of building the jet-ski centre.

Advantage _____

Disadvantage _____

(b) From your own knowledge, give **two** ways local people might try to stop the jet-ski centre being built.

1 _____

2 _____

KU EV

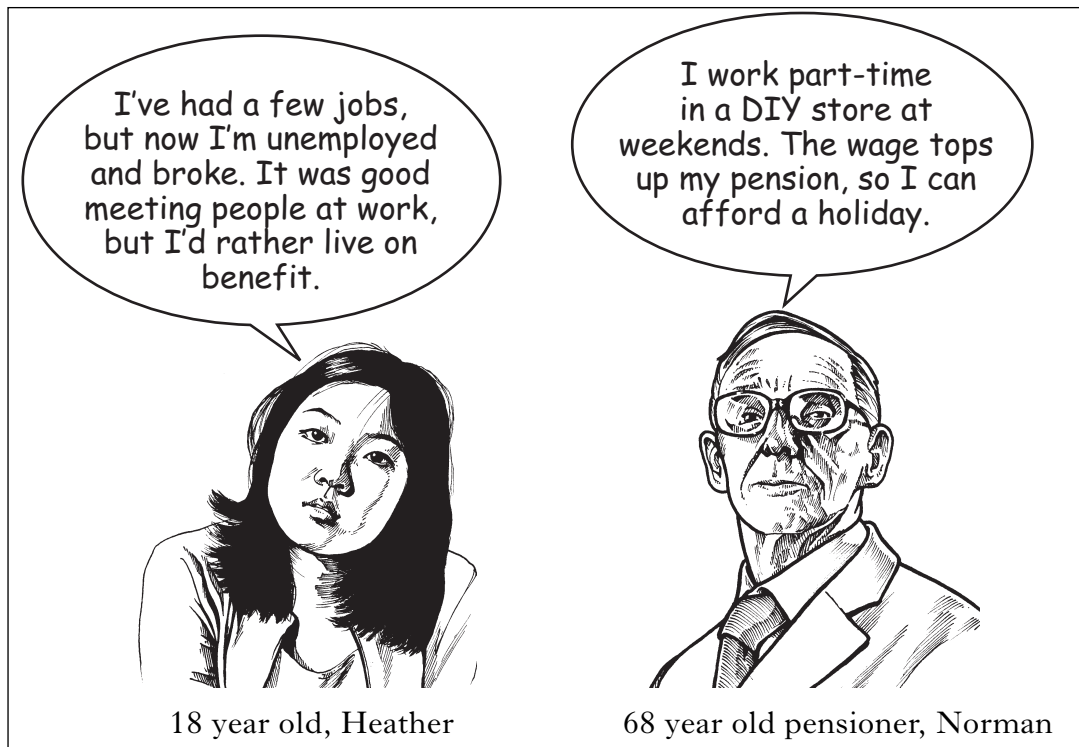
4

4

INDUSTRIAL SOCIETY

5. Look at the source below.

It shows two people talking about work.



(a) From the source, give **two** reasons why people like working.

Reason 1 _____

Reason 2 _____

(b) The DIY store that Norman works in has **incentive schemes** for its workers.

From your own knowledge, give **two** examples of incentive schemes.

Choose from the list below. Put a tick (✓) in the boxes beside your two choices.

Incentive schemes	Tick (✓) if correct
Monthly prize for best worker.	
Free company uniform.	
Bonus for high sales.	
Flexible hours.	
Annual holidays.	

KU EV

4

4

6. Look at the source below.

It gives information about trade union membership.

- * 30% of full-time male workers are trade union members.
- * 35% of full-time female workers are trade union members.
- * Many full-time workers are employed in small businesses.
- * 20% of part-time workers are trade union members.

(a) Using the source, complete the following sentences.

Circle the **correct** words in bold print.

Most workers **do/don't** belong to a trade union.

Part-time workers are **more/less** likely to be in a trade union.

Men/women are more likely to be in a trade union.

4

(b) From your own knowledge, give **two** advantages of being in a trade union.

Choose from the list below. Put a tick (✓) in the boxes beside your two choices.

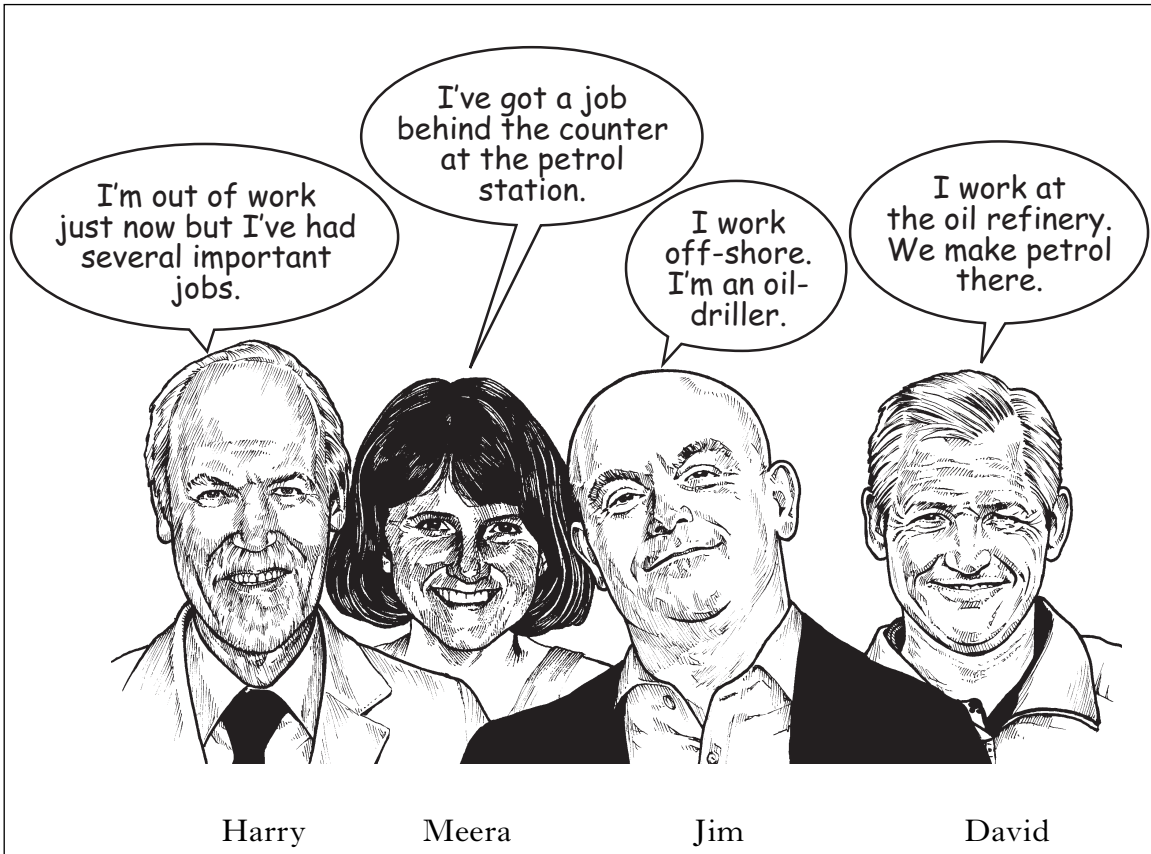
Advantages of being in a trade union	Tick (✓) if correct
You get better pay.	
You pay a monthly subscription.	
You have to go on strike.	
You are less likely to be sacked.	
You are more likely to be promoted.	

4

KU	EV

7. Look at the source below.

It shows four people speaking about their jobs.



(a) Using the source, complete the table below.

Give the name of the person who works in the following types of industry.

Type of industry	Name of person
Primary	
Manufacturing	
Service	

4

[Turn over

7. (continued)

- (b) Look at the source below.
It gives information about a job in the leisure industry.

Swimming Teacher Wanted

You will be teaching swimming, as part of the "Learn to Swim Scheme".
You must have a Life-saving Certificate.
You will get help to train for additional qualifications.
You will have to do evening work in different towns.
You must have a full driving licence. A car will be provided.

From the source, give one **advantage** and one **disadvantage** of this job.

Advantage _____

Disadvantage _____

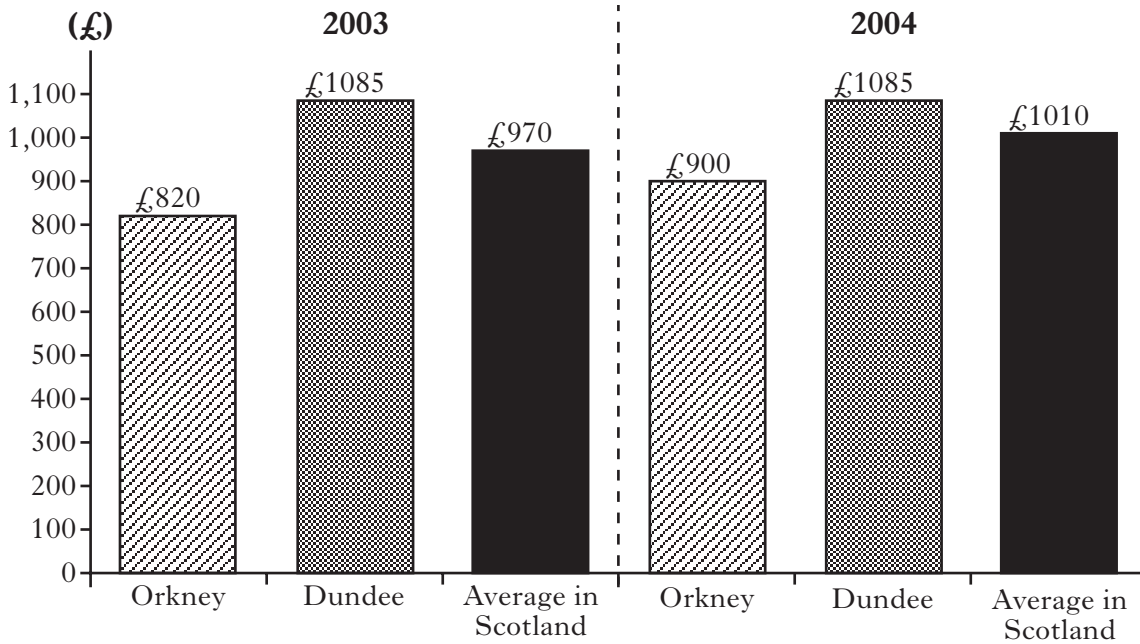
KU	EV
4	

SCOTTISH SOCIETY

KU	EV
4	
	4

8. (a) Look at the source below.

It gives information about Council Tax in Scotland in 2003 and 2004.



Using the source, complete the following sentences.

Circle the **correct** words in **bold** print.

Council Tax in Orkney has gone **up/down**.

Council Tax in Dundee is **higher/lower** than the average in Scotland.

Council Tax has gone up in **some/all** areas of Scotland.

(b) Look at the source below.

It describes some of the public services that people use.

Jean McDonald borrowed a CD from the library. Her husband John went for a check-up at the hospital. On the way to work he dropped off their daughter at the school breakfast club. Jean went to the post office to send a package to her brother, who is in the Royal Air Force.

From the source, give **two** examples of services that are provided by the **local council**.

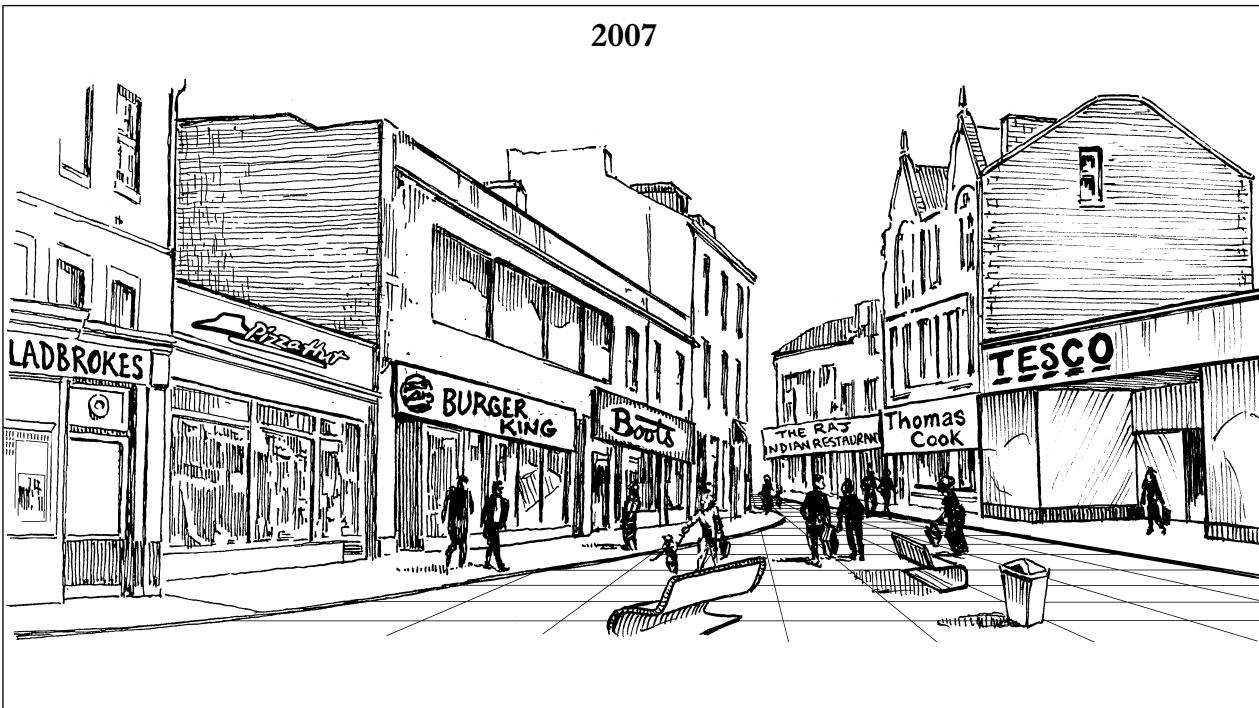
Example 1 _____

Example 2 _____

9. look at the source below.

It shows changes in a Scottish high street over the last 50 years.

KU	EV



Marks

9. (continued)

(a) Using the source, give **three** changes which have taken place in Scottish shopping over the last 50 years.

Choose from the list below. Put a tick (✓) in the boxes beside your **three** choices.

Changes from 1957 to 2007	Tick (✓) if correct
Local shops have gone out of business.	
There is a greater variety of shops than there used to be.	
More people go out to eat.	
Large stores are more common now.	
People spend less than they used to.	

4

(b) Changes have taken place in other areas of Scottish life over the last 50 years.

From your own knowledge, say whether the following statements are true or false.

Write **true** or **false** next to each statement in the table below.

Changes which have taken place	True or false
Scotland is less of a multi-cultural society.	
More Scots now live in country areas.	
Technology has made housework easier.	
More people travel to work by car.	

4

[Turn over

Marks

10. (continued)

- (b) From your own knowledge, give **two** actions which **only** the UK Parliament in London can take.

Choose from the list below. Put a tick (✓) in the boxes beside your two choices.

Action	Tick (✓) if correct
Invade another country.	
Increase Council Tax.	
Put tax on petrol.	
Give help to industry.	
Build new schools.	

4

KU	EV
4	

[END OF QUESTION PAPER]

[BLANK PAGE]

[BLANK PAGE]

FOR OFFICIAL USE

	KU	EV
1(a)		
1(b)		
2(a)		
2(b)		
3(a)		
3(b)		
3(c)		
4(a)		
4(b)		
5(a)		
5(b)		
6(a)		
6(b)		
7(a)		
7(b)		
8(a)		
8(b)		
9(a)		
9(b)		
10(a)		
10(b)		
Total Marks		