

FOR OFFICIAL USE

--	--	--	--	--	--

Mark

--

NATIONAL QUALIFICATIONS 2013

# COMPUTING STUDIES INTERMEDIATE 1



\* X 2 0 7 1 0 0 1 \*

TUESDAY, 28 MAY  
9.00 AM – 10.00 AM

## X207/10/01

Fill in these boxes and read what is printed below.

Full name of centre

--

Town

--

Forename(s)

--

Surname

--

Number of seat

--

Date of birth

Day

Month

Year

--	--

--	--

--	--

Scottish candidate number

--	--	--	--	--	--	--	--	--	--

Attempt Section I and **one** Part of Section II.

Section I – Attempt all questions.

Section II – This section has two parts:

Part A – Computers and the Internet

Part B – Information and the Internet

Choose **one** part and answer **all** the questions in that part.

Read all questions carefully.

Write your answers in the space provided on the question paper.

Write as neatly as possible.

Use blue or black ink. Pencil may be used for graphs and diagrams only.

Before leaving the examination room you must give this book to the Invigilator. If you do not, you may lose all the marks for this paper.



\* X 2 0 7 1 0 0 1 0 1 \*

## SECTION I

DO NOT  
WRITE  
IN THIS  
MARGIN

**Attempt ALL questions in this section**

1. Gillian chose to create a slide show about hamsters for her English solo talk.
  - (a) (i) Gillian's first slide is about her own hamster called Phoebe.



State the **text** justification used on the slide title.

1

- (ii) The original photograph of Phoebe is shown below.



State the graphic operation that was carried out on the original photograph.

1



1. (continued)

DO NOT  
WRITE  
IN THIS  
MARGIN

- (b) (i) State the input device that would be the most suitable for capturing high quality photographs of Phoebe.

1

- (ii) Which of the following **file types** is used to store photographs?  
Tick **one** box.

☐

rtf

☐

mp3

☐

avi

☐

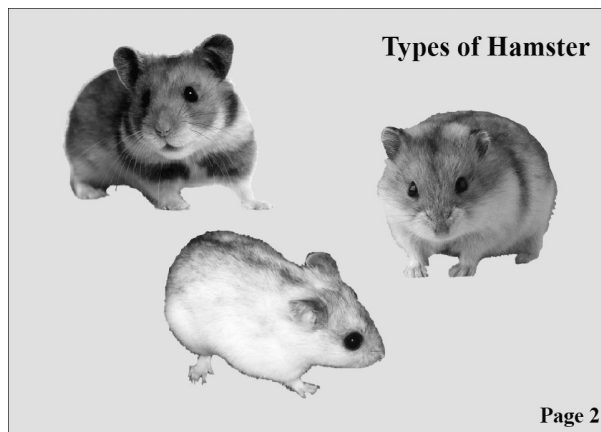
jpeg

1

- (iii) Storing photographs can use a large amount of storage space.  
Without removing any parts of the photographs, what could be done to reduce the file size?

1

- (c) Gillian's second slide has pictures of other types of hamster.



Describe **one** way Gillian might have added the other pictures.

2



1. (continued)

DO NOT  
WRITE  
IN THIS  
MARGIN

(d) Gillian wants to record her local vet talking about how to look after hamsters.

(i) Name **two** devices Gillian would need to capture sound.

1 \_\_\_\_\_

2 \_\_\_\_\_

2

(ii) How could Gillian convert what the vet said into text without having to type it in?

Tick **one** box.

☐

use a trackpad

☐

use optical character recognition software

☐

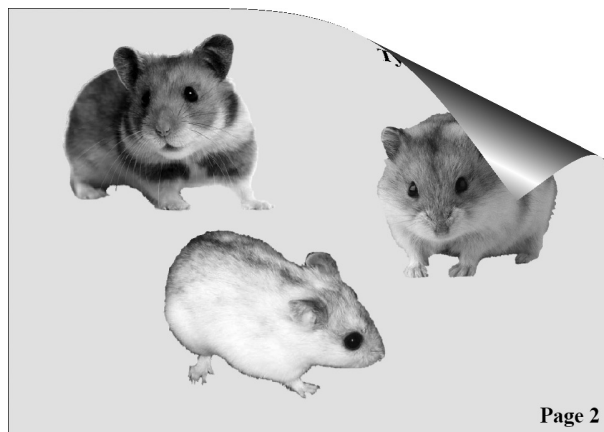
use a scanner

☐

use voice recognition software

1

(e) Gillian adds a feature to her slides that makes each new slide roll in as if a page is being turned.



State the **type** of feature used above.

\_\_\_\_\_

1



1. (continued)

DO NOT  
WRITE  
IN THIS  
MARGIN

- (f) Gillian is unhappy with the quality of the picture being produced by her computer.

What could she replace inside her computer system to improve the quality of her picture?

1

- (g) Gillian has finished work for the night and wants to switch her computer off. What must she do to the slideshow so that she can edit it again the next day?

1

- (h) Gillian stores her 5Mb slide show to a portable storage device and puts it into her purse.



- (i) State the storage device Gillian used.

1

- (ii) Put the following storage units into order from smallest to largest.

**Gb, bits, Tb, bytes, Kb, Mb**

1

- (i) Gillian shows the slide show to her English class.  
State the output device she should use to do this.

1

[Turn over

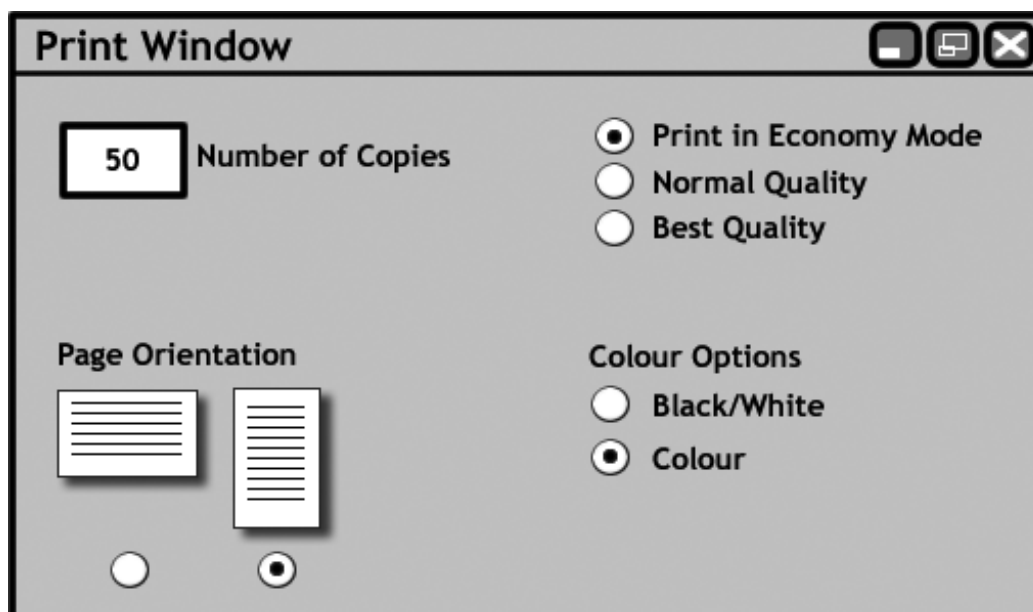


1. (continued)

DO NOT  
WRITE  
IN THIS  
MARGIN

- (j) Gillian prints copies of the slide show.

On the diagram below circle the option which Gillian has selected to print efficiently.



The diagram shows a 'Print Window' dialog box with the following settings:

- Number of Copies:** 50
- Print in Economy Mode:** ☒ (Selected)
- Normal Quality:** ☐
- Best Quality:** ☐
- Page Orientation:** Portrait (Selected, indicated by a filled circle below the portrait icon)
- Colour Options:** ☒ Colour (Selected)
- Black/White:** ☐

1



2. Greenvil High School is preparing for their latest school show “Pals”.  
Alastair offered to record and calculate the cost of hiring equipment for the production.

	A	B	C	D
1	<b>Pals Production Costs</b>			
2				
3	<b>Equipment</b>	<b>Cost</b>	<b>Deposit Paid</b>	<b>Amount Due</b>
4	Stage	£300.00	£10.00	£290.00
5	Lighting	£450.00	£50.00	£400.00
6	Costume Hire	£70.00	£20.00	£50.00
7	Smoke Machine	£65.00	£0.00	£65.00
8	Music Royalties	£200.00	£0.00	£200.00
9	Backdrops	£800.00	£200.00	£600.00
10	Hall Hire	£90.00	£90.00	£0.00

- (a) State the type of application shown above.

Tick **one** box.

- ☐ Word Processor
- ☐ Spreadsheet
- ☐ Graphic
- ☐ Desktop Publisher

1

- (b) Alastair entered a formula to calculate the Amount Due.

- (i) State the formula Alastair used in cell D4.

---

1

- (ii) After entering the above formula, describe how he entered the formulae in cells D5 to D10 without typing each one in.

---



---



---

2

- (c) State how the values in columns B, C and D have been formatted.

---

1



\* X 2 0 7 1 0 0 1 0 7 \*

2. (continued)

DO NOT  
WRITE  
IN THIS  
MARGIN

	A	B	C	D
1	<b>Pals Production Costs</b>			
2				
3	<b>Equipment</b>	<b>Cost</b>	<b>Deposit Paid</b>	<b>Amount Due</b>
4	Stage	£300.00	£10.00	£290.00
5	Lighting	£450.00	£50.00	£400.00
6	Costume Hire	£70.00	£20.00	£50.00
7	Smoke Machine	£65.00	£0.00	£65.00
8	Music Royalties	£200.00	£0.00	£200.00
9	Backdrops	£800.00	£200.00	£600.00
10	Hall Hire	£90.00	£90.00	£0.00
11				
12	<b>Total</b>	<b>£1,975.00</b>		

(d) Alastair calculated the total in cell B12 using the formula below:

$$= B4 + B5 + B6 + B7 + B8 + B9 + B10$$

State the function that Alastair should have used.

= \_\_\_\_\_ (B4 : B10)

1





2. (continued)

DO NOT  
WRITE  
IN THIS  
MARGIN

- (e) The drama club creates a logo for Pals.



- (i) The four stars above the heart were produced by creating one star and then performing two operations.

Which **two** operations were used?

Tick **one** box.

- ☐ duplicate then scale
- ☐ flip then duplicate
- ☐ scale then rotate
- ☐ flip then scale

- (ii) The logo was created using a variety of different shapes.



State the **type** of graphics package used.

---

1

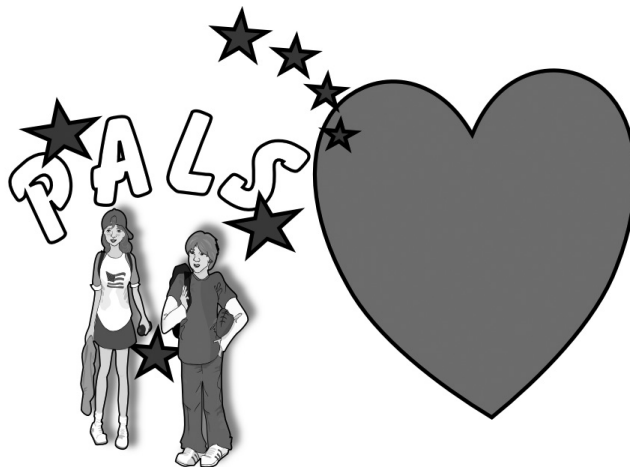
1



2. (e) (continued)

DO NOT  
WRITE  
IN THIS  
MARGIN

- (iii) Alastair clicks on the logo to reposition it on the leaflet and only the heart moves.



Explain what should be done to the graphic to ensure that all the logo shapes move together.

1

- (f) One member of the drama club uses a desktop publishing package to create a leaflet advertising Pals.



2. (f) (continued)

DO NOT  
WRITE  
IN THIS  
MARGIN

- (i) Select one advantage of using a desktop publishing package rather than a word processor to create the leaflet.

Tick **one** box.

- ☐ the style of text can be changed
- ☐ easier to position text and graphics
- ☐ graphics can be added to a document
- ☐ text can be put into columns

1

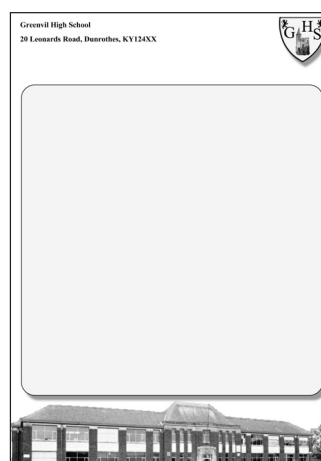
- (ii) The school wishes to use the layout of the leaflet in the future.

State the feature of the application which could be used to store the layout for next year's production.

---

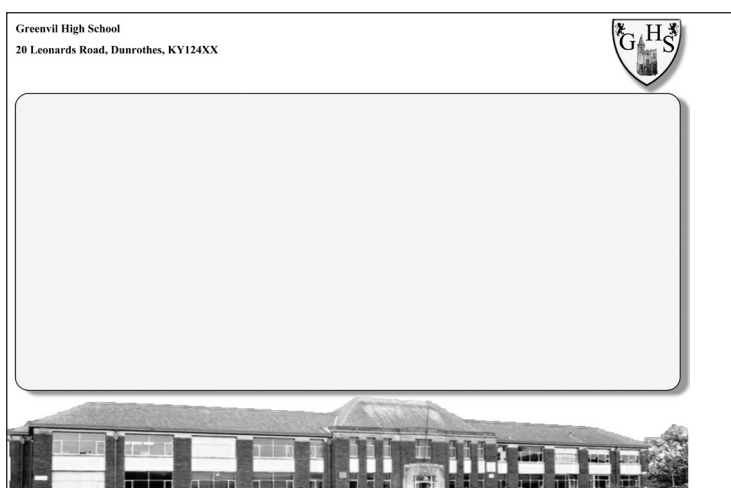


---



1

- (iii) A presentation is produced to be displayed on screens round the school.



How has the page been formatted to make the layout fit onto the screens?

---

1



3. Rona, Steph and Morna are researching information about tourist attractions they want to visit in London.

DO NOT  
WRITE  
IN THIS  
MARGIN

They type the information into a word processor.

**Possible locations to visit in London.**

London Eye  
Madame Tussauds  
Houses of Parliament

**London Eye**

The EDF Energy London Eye opened in March 2000 and has become the UK's most popular paid for visitor attraction, visited by over 3.5 million people a year. It is one of the most recognisable landmarks in the UK's capital city of London.

Each London Eye capsule carries passengers on a 45 minute journey. They are a breathtaking feat of design and engineering. At the top, passengers in the London Eye's capsules can see up to 40 kilometres in all directions.

The London Eye is the vision of David Marks and Julia Barfield, a husband and wife architect team. The wheel design was used as a metaphor for the end of the 20th century, and time turning into the new millennium.

Back in 2000, the London Eye was known as the Millennium Wheel. At that time, British Airways was the main sponsor, and up until November 2005 they were joint shareholders with Marks Barfield Architects and The Tussauds Group. British Airways also privately funded the London Eye project from the early stages of conception. Today, the London Eye is operated by the London Eye Company Limited, a Merlin Entertainments Group Company.

**Madame Tussauds**

Millions and millions of people have flocked through the doors of Madame Tussauds since they first opened over 200 years ago and it remains just as popular as it ever was. There are many reasons for this enduring success, but at the heart of it all is good, old-fashioned curiosity. Today's visitors are sent on a unique, emotionally-charged journey through the realms of the powerful and famous. The museum-style ropes and poles have gone so guests can truly get up, close and personal with A-list celebrities, sporting legends, political heavyweights and historical icons, reliving the times, events and moments that made the world talk about them.

**The Houses of Parliament**

In order to make your visit to the Parliament as enjoyable as possible, please inform the events organiser of any arrangement which can be made to enable full access to the event. It would be extremely helpful if you do this in advance of the event to enable the necessary arrangements to be put in place.

If your event is during the day, there may be a queue of people waiting to get in the building. Please remember that the queue may be other delegates for your event. If you have a mobility requirement or for some other reason have difficulty in standing in queues please contact the event organiser prior to attending to arrange assistance.

You may be asked to register for your event at the Visitor Services desk in Westminster Hall. The organiser of your event may also issue you with an individual name badge; this can only be worn in addition to your security badge.

Photographs may only be taken in Westminster Hall, New Palace Yard and the room where the event is being held (subject to approval from the sponsor).

**Travelling to the Parliament**

Parliament is located in Westminster, in the centre of London. All major forms of public transport, many of which are wheelchair accessible, serve it.

- (a) State the input device used to enter text into a word processor.

1

- (b) The top of the document is shown below.

**Possible locations to visit in London.**

London Eye  
Madame Tussauds  
Houses of Parliament

**London Eye**

The EDF Energy London Eye opened in March 2000 and has become the UK's most popular paid for visitor attraction, visited by over 3.5 million people a year. It is one of the most recognisable landmarks in the UK's capital city of London.

- (i) State **one** way the text has been edited to make the heading stand out.

1



3. (b) (continued)

DO NOT  
WRITE  
IN THIS  
MARGIN

- (ii) What word processing facility could Rona use to make the **list** of the three possible locations stand out?

1

- (c) Changes are needed in the document.

Complete the table, using the three words below.

**Insert      Delete      Amend**

<b>Task</b>	<b>Term</b>
Rona wishes to add an introduction to the start of the document.	
Steph notices a mistake in the document and changes a word.	
Morna no longer wants to visit the London Eye and suggests that the information on that attraction is removed from the document.	

2

- (d) The spell checker facility in Rona's word processor has highlighted many words that she knows are spelt correctly.

Explain why Rona's spell checker would highlight a word that is correctly spelt.

1

[Turn over



### 3. (continued)

DO NOT  
WRITE  
IN THIS  
MARGIN

- (e) Rona formats the page to create more blank space at the bottom of the document.

<p><b>Possible locations to visit in London.</b></p> <p>London Eye Madame Tussauds Houses of Parliament</p> <p><b>London Eye</b></p> <p>The EDF Energy London Eye opened in March 2000 and has become the UK's most popular paid for visitor attraction, visited by over 3.5 million people a year. It is one of the most recognisable landmarks in the UK's capital city of London.</p> <p>Each London Eye capsule carries passengers on a 45 minute journey. They are a breathtaking feat of design and engineering. At the top, passengers in the London Eye's capsules can see up to 40 kilometres in all directions.</p> <p>The London Eye is the vision of David Marks and Julia Barfield, a husband and wife architect team. The wheel design was used as a metaphor for the end of the 20th century, and time turning into the new millennium.</p> <p>Back in 2000, the London Eye was known as the Millennium Wheel. At that time, British Airways was the main sponsor, and up until November 2005 they were joint shareholders with Marks Barfield Architects and The Tussauds Group. British Airways also privately funded the London Eye project from the early stages of conception.</p> <p>Today, the London Eye is operated by the London Eye Company Limited, a Merlin Entertainments Group Company.</p> <p><b>Madame Tussauds</b></p> <p>Millions and millions of people have flocked through the doors of Madame Tussauds since they first opened over 200 years ago and it remains just as popular as it ever was. There are many reasons for this enduring success, but at the heart of it all is good, old-fashioned curiosity. Today's visitors are sent on a unique, emotionally-charged journey through the realms of the powerful and famous. The museum-style ropes and poles have gone so guests can truly get up, close and personal with A-list celebrities, sporting legends, political heavyweights and historical icons, reliving the times, events and moments that made the world talk about them.</p> <p><b>The Houses of Parliament</b></p> <p>In order to make your visit to the Parliament as enjoyable as possible, please inform the events organiser of any arrangement which can be made to enable full access to the event. It would be extremely helpful if you do this in advance of the event to enable the necessary arrangements to be put in place.</p> <p>If your event is during the day, there may be a queue of people waiting to get in the building. Please remember that the queue may be other delegates for your event. If you have a mobility requirement or for some other reason have difficulty in standing in queues please contact the event organiser prior to attending to arrange assistance.</p> <p>You may be asked to register for your event at the Visitor Services desk in Westminster Hall. The organiser of your event may also issue you with an individual name badge, this can only be worn in addition to your security badge.</p> <p>Photographs may only be taken in Westminster Hall, New Palace Yard and the room where the event is being held (subject to approval from the sponsor).</p> <p>Travelling to the Parliament</p> <p>Parliament is located in Westminster, in the centre of London. All major forms of public transport, many of which are wheelchair accessible, serve it.</p>	<p><b>Possible locations to visit in London.</b></p> <p>London Eye Madame Tussauds Houses of Parliament</p> <p><b>London Eye</b></p> <p>The EDF Energy London Eye opened in March 2000 and has become the UK's most popular paid for visitor attraction, visited by over 3.5 million people a year. It is one of the most recognisable landmarks in the UK's capital city of London.</p> <p>Each London Eye capsule carries passengers on a 45 minute journey. They are a breathtaking feat of design and engineering. At the top, passengers in the London Eye's capsules can see up to 40 kilometres in all directions.</p> <p>The London Eye is the vision of David Marks and Julia Barfield, a husband and wife architect team. The wheel design was used as a metaphor for the end of the 20th century, and time turning into the new millennium.</p> <p>Back in 2000, the London Eye was known as the Millennium Wheel. At that time, British Airways was the main sponsor, and up until November 2005 they were joint shareholders with Marks Barfield Architects and The Tussauds Group. British Airways also privately funded the London Eye project from the early stages of conception.</p> <p>Today, the London Eye is operated by the London Eye Company Limited, a Merlin Entertainments Group Company.</p> <p><b>Madame Tussauds</b></p> <p>Millions and millions of people have flocked through the doors of Madame Tussauds since they first opened over 200 years ago and it remains just as popular as it ever was. There are many reasons for this enduring success, but at the heart of it all is good, old-fashioned curiosity. Today's visitors are sent on a unique, emotionally-charged journey through the realms of the powerful and famous. The museum-style ropes and poles have gone so guests can truly get up, close and personal with A-list celebrities, sporting legends, political heavyweights and historical icons, reliving the times, events and moments that made the world talk about them.</p> <p><b>The Houses of Parliament</b></p> <p>In order to make your visit to the Parliament as enjoyable as possible, please inform the events organiser of any arrangement which can be made to enable full access to the event. It would be extremely helpful if you do this in advance of the event to enable the necessary arrangements to be put in place.</p> <p>If your event is during the day, there may be a queue of people waiting to get in the building. Please remember that the queue may be other delegates for your event. If you have a mobility requirement or for some other reason have difficulty in standing in queues please contact the event organiser prior to attending to arrange assistance.</p> <p>You may be asked to register for your event at the Visitor Services desk in Westminster Hall. The organiser of your event may also issue you with an individual name badge, this can only be worn in addition to your security badge.</p> <p>Photographs may only be taken in Westminster Hall, New Palace Yard and the room where the event is being held (subject to approval from the sponsor).</p> <p>Travelling to the Parliament</p> <p>Parliament is located in Westminster, in the centre of London. All major forms of public transport, many of which are wheelchair accessible, serve it.</p>
---	---

Before

After

How has Rona altered the page format?

Tick **one** box.

☐

she has added a header and footer

☐

she has changed the page margins

☐

she has used text wrap

☐

she has changed text alignment

1



3. (continued)

DO NOT  
WRITE  
IN THIS  
MARGIN

- (f) Rona wishes to upgrade her word processing software. She sees the advert below.

**TextFocus**

The best word processor on the market!  
Requires:  
2.3 GHz processor,  
512 Mb RAM,  
2 Gb Backing Storage,  
Reid OS 2013

How much memory does the TextFocus application require?

1

[Turn over



4. Gordon and Sunita have to organise accommodation for a meeting in Edinburgh.

DO NOT  
WRITE  
IN THIS  
MARGIN

Gordon downloads a database of Edinburgh hotels. A record from the database is shown below.

<b>Hotel Name</b>	Danubisis
<b>Location</b>	Tram Ways
<b>Single Room</b>	£105.00
<b>Double Room</b>	£140.00
<b>Breakfast</b>	£7
<b>Parking Spaces</b>	25
<b>Swimming Pool</b>	Yes

- (a) What is the field **type** of “Location”?

1

- (b) How would Sunita find the hotel which has a single room costing less than £100 and which offers the cheapest breakfast?

Tick **one** box.

☐ Search on the Single Room field for <100 and  
Search on the Breakfast field

☐ Sort on the Single Room field for <=100 and  
Search on the Breakfast field

☐ Search on the Single Room field for <100 and  
Sort on the Breakfast field

☐ Search on the Single Room field for >100 and  
Sort on the Breakfast field

1

- (c) What hardware is required to download a file from the Internet?

Tick **one** box.

☐ graphics card

☐ modem

☐ speakers

☐ scanner

1

[END OF SECTION I]



\* X 2 0 7 1 0 0 1 1 6 \*



## SECTION II

There are two parts to this section.

Attempt **ONE** part only.

Tick the part that you intend to attempt.

Computers and the Internet

☐

Information and the Internet

☐

**[Turn over**



\* X 2 0 7 1 0 0 1 1 7 \*

## Part A — Computers and the Internet

DO NOT  
WRITE  
IN THIS  
MARGIN

5. Bannockhill Sports College runs an athletics competition. They want to store competitors' details on their computer network.

(a) Explain what is meant by a computer network.

---



---

1

(b) They would like to search and sort the data quickly during the competition. State the most suitable **type** of application software for storing the competitors' details.

---

1

(c) Tariq is developing a website for the competition.

Complete the table below showing the stages of the *Software Development Process*.

Stage	Action
1. _____	The content of the website is agreed.
2. _____	Sketch the layout of each page showing the elements.
Implementation	Creating the pages.
Testing	Checking pages and links look and behave correctly.
Documentation	Create user and technical guides.
Evaluation	3. _____ _____

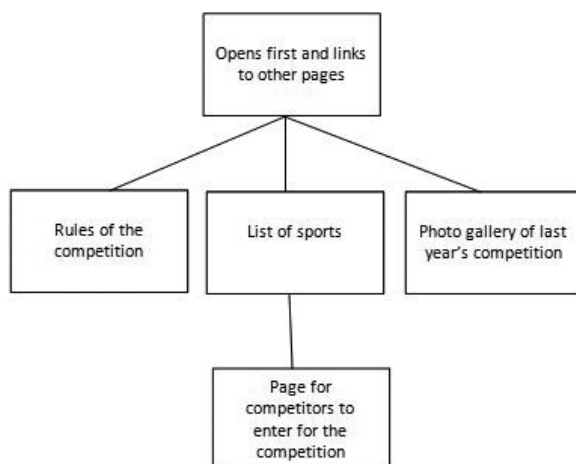
2



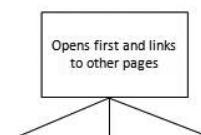
\* X 2 0 7 1 0 0 1 1 8 \*

5. (continued)

(d) Tariq is developing the following pages:



State the name of the page shown that opens first and links to other pages.



1

(e) Website users can enter the competition using the page below.

Sheila enters her competitor number and the error message shown appears. State a reason for this message.

1

5. (continued)

- (f) During the competition, photographs are taken. Explain how the digital photographs are transferred to the computer.

---



---

1

- (g) Identity badges have to be produced. Tariq is asked to compare inkjet and laser printers. Give a reason why he recommends a colour laser printer for printing identity cards.

---



---

1

- (h) Tariq is worried that the college may lose data if the computers break during the competition. State what the college should do to ensure that minimum data would be lost.



---



---

1

- (i) For entering data at the competition, Tariq must choose between a *laptop* and a *palmtop* computer. Complete the table below showing the differences between these two types of computer.

	Laptop 	Palmtop 
Processing power	Faster processor	Slower processor
Input Devices		
Portability		

2



**Part A — Computers and the Internet (continued)**

DO NOT  
WRITE  
IN THIS  
MARGIN

6. (a) Rihanne tries to use the Bannockhill College website which has video content.

A network card is required to access the website. State the purpose of a network card.

1

- (b) (i) Rihanne finds the web page downloads slowly. The college supplies her with a detailed list of requirements to view the website.

**Rihanne's Computer**

- 2.3 GHz Dual Core processor
- 30 Mb RAM
- Dial-up Internet connection
- Ogle Brass 2006 browser software

**Requirements to view website**

- 2.3 GHz Dual Core processor
- 30 Mb RAM
- Broadband Internet connection
- Up to date browser software

Compare her computer's specification with the requirements and state **two** things she should do to improve her computer's performance when viewing the website.

1 \_\_\_\_\_

2 \_\_\_\_\_

2

- (ii) What **type** of software is a web browser?

Tick **one** box.

☐

Gaming software

☐

Systems software

☐

Communication software

☐

Security software

1



\* X 2 0 7 1 0 0 1 2 1 \*

6. (continued)

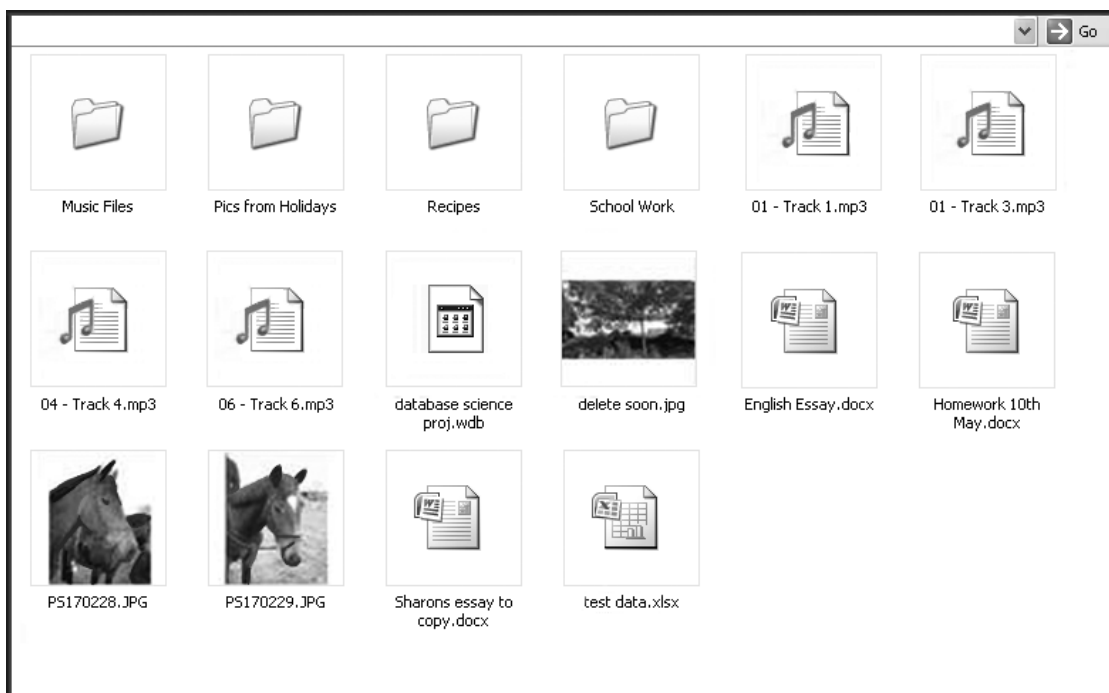
- (c) Rihanne finds that there are costs involved in Internet access. Some costs are *initial costs* and others are *running costs*.

State the type of cost of the following.

Cost	Type of Cost
Subscription for Internet security software	running
Monthly payment to an ISP	
Buying a modem and router	

2

- (d) Rihanne is tidying up her hard disk.



- (i) She is going to delete the file “delete soon”. State the **type** of software used to delete files.

1



**Part A — Computers and the Internet (continued)**

DO NOT  
WRITE  
IN THIS  
MARGIN

**6. (d) (continued)**

- (ii) Describe how this software could be used to organise Rihanne's files shown above.

---

---

1

- (iii) Rihanne saved the file "English Essay" on her hard disk. Explain why this file is **not** a program file.

---

1  
(20)

[END OF PART A—COMPUTERS AND THE INTERNET]

[Turn over for Part B on *Page twenty-four*]



\* X 2 0 7 1 0 0 1 2 3 \*

## Part B — Information and the Internet

DO NOT  
WRITE  
IN THIS  
MARGIN

5. Bannockhill Sports College runs an athletics competition. The college decides to store the results on computer this year instead of on paper.



- (a) State an advantage of computerising the competition results.

---



---

1


- (b) Competitors will enter their details on a web page using their competitor number and password. Allan guesses a competitor's password, accesses the system and changes their details.

What law has Allan broken?

---

1

- (c) Sheila enters the competition using the web page below.

**Bannockhill Sports College Athletics 2013** 

Competitors Entry Screen

**Please enter details**

Competitor Name	Sheila McKenzie
Which sport	400 m Hurdles
Date	25/05/2013

4579HM
Enter

From the web page above identify an item that is *information* and an item that is *data* to Sheila.

Data	
Information	

2





**Part B — Information and the Internet (continued)**

DO NOT  
WRITE  
IN THIS  
MARGIN

**5. (continued)**

(d) The college provides students with Internet access.

(i) Which of the following is a running cost of Internet access?

Tick **one** box.

☐

Cost of network cables

☐

Cost of modem

☐

Cost of technical helpline

☐

Cost of computer system

1

(ii) State how the college can prevent anyone from viewing inappropriate sites.

1

(iii) In addition to *sports* websites name one other **type** of website that a student may want to browse.

1

**[Turn over**



\* X 2 0 7 1 0 0 1 2 5 \*

## Part B — Information and the Internet (continued)

DO NOT  
WRITE  
IN THIS  
MARGIN

6. (a) When the competitors enter the competition, the data is stored on a database. An example record is shown below.

<b>Competitor</b>	A5567981
<b>Name</b>	Catherine Main
<b>Sex (M/F)</b>	F
<b>Competition</b>	10 000 m
<b>Date of Birth</b>	30/05/1995
<b>Sports Club</b>	Glasgow Fliers
<b>Final Place</b>	2
<b>Time</b>	00:35:21

- (i) State the field **type** for the *Final Place* field.

1

- (ii) The college wants the database to contain a photograph of each competitor. State a suitable field **type** that could be used for this.

1

- (b) Describe how the college can find all the female competitors entered for the High Jump.

3



\* X 2 0 7 1 0 0 1 2 6 \*

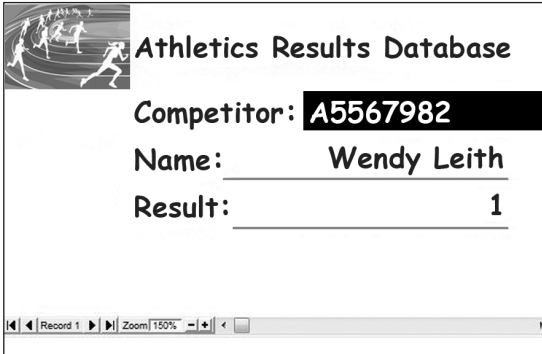
## Part B — Information and the Internet (continued)

DO NOT  
WRITE  
IN THIS  
MARGIN

### 6. (continued)

(c) The college display their database using different formats.

Entering results



**Athletics Results Database**

Competitor: **A5567982**

Name: **Wendy Leith**

Result: **1**

Displaying results

Competitor	Name	Result
A5567982	Wendy Leith	1
S5568944	Anna Patterson	4
S5578341	Grania Reid	2
N5590231	Rae Coulson	5
I5504783	Davina Smith	3
T5789453	Alanah Stalker	6

Name the **two** formats shown above.

Entering Results \_\_\_\_\_

Displaying Results \_\_\_\_\_

2

(d) The results database is held on the college computer network. State an advantage of having the database on a computer network.

\_\_\_\_\_

1

(e) (i) In order to contact competitors the college secretary uses a copy of the phone book to find their phone numbers. What type of information system is she using?

Tick **one** box.

☐

Private and manual

☐

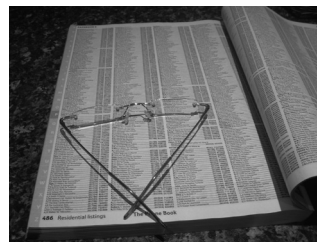
Public and manual

☐

Private and electronic

☐

Public and electronic



1

(ii) Explain how the secretary could use a computer to find the phone numbers.

\_\_\_\_\_

1



**Part B — Information and the Internet (continued)**

DO NOT  
WRITE  
IN THIS  
MARGIN

7. The web master who developed the website for Bannockhill Sports College followed the software development process.

(a) State the names of the first **two** stages he followed.

1	
2	
3	Implementation
4	Testing
5	Documentation
6	Evaluation

1

(b) Which stage of the software development process is described below?

*Writing instructions  
for the competitors to  
register their number  
and enter their  
details.*

1

(c) The website is part of the World Wide Web. Explain what is meant by the World Wide Web.

1

(20)

[END OF PART B—INFORMATION AND THE INTERNET]

[END OF SECTION II]

[END OF QUESTION PAPER]



ADDITIONAL SPACE FOR ANSWER

DO NOT  
WRITE  
IN THIS  
MARGIN



\* X 2 0 7 1 0 0 1 2 9 \*

ADDITIONAL SPACE FOR ANSWER

DO NOT  
WRITE  
IN THIS  
MARGIN



\* X 2 0 7 1 0 0 1 3 0 \*

[BLANK PAGE]

DO NOT WRITE ON THIS PAGE



\* X 2 0 7 1 0 0 1 3 1 \*

## ACKNOWLEDGEMENTS

Question 3(f)—Image of a Microsoft keyboard. Permission is being sought from Microsoft.



\* X 2 0 7 1 0 0 1 3 2 \*