

X223/11/02

NATIONAL
QUALIFICATIONS
2013

WEDNESDAY, 5 JUNE
1.00 PM – 2.00 PM

ART AND DESIGN
INTERMEDIATE 2

There are **two** sections to this paper, Section 1—Art Studies; and Section 2—Design Studies.

Each section is worth 20 marks.

Candidates should attempt questions as follows:

In SECTION 1 answer **ONE full question** (parts (a) and (b))

and

In SECTION 2 answer **ONE full question** (parts (a) and (b)).

You may use sketches to illustrate your answers.



SECTION 1—ART STUDIES

Instructions

Read your selected question and notes on the illustration carefully.

Answer **ONE full question** from this section: parts **(a)** and **(b)**.



Self-portrait in a Flowered Jacket (1971–73) by John Patrick Byrne
oil on board (147 × 91 cm)

1. Portraiture

Marks

- (a) Describe how the artist has used **three** of the following elements in this painting: *colour; tone; detail; viewpoint*.

What do you think the composition tells us about the artist?

10

- (b) Compare and contrast **two** portraits by different artists. With reference to the working methods of the artists say why you think they are successful.

10

SECTION 1—ART STUDIES (continued)



The Seaside (1966) by William Roberts
oil on canvas (61 × 76 cm)

2. Figure Composition

Marks

(a) In your opinion how well does the artist use *shape*, *form* and *colour* to create this beach scene?

What feelings do you think he is expressing in this painting?

10

(b) Describe and compare **two** figure compositions by different artists. Explain why, in your opinion, they are successful. Refer to each artist's technique and style in your answer.

10

[Turn over

SECTION 1—ART STUDIES (continued)



The Table (Still life with Rabbit) (1920) by Joan Miro
oil on canvas (130 × 110 cm)

Marks

3. Still Life

- (a) What do you think of the choice of subject matter in this still life painting? Comment on the success of this work. Refer to the artist's use of *pattern*, *shape* and *colour* in your answer. 10
- (b) Compare and contrast **two** still lifes by different artists. What moods or feelings do you think the artists have attempted to capture in their work? Refer to style and use of media in your answer. 10

SECTION 1—ART STUDIES (continued)



*Conjoined*¹ – Madison Square Gardens New York City (2007) by Roxy Paine
stainless steel (12m 19cm × 13m 72cm)

¹Conjoined – *to join or become joined together*

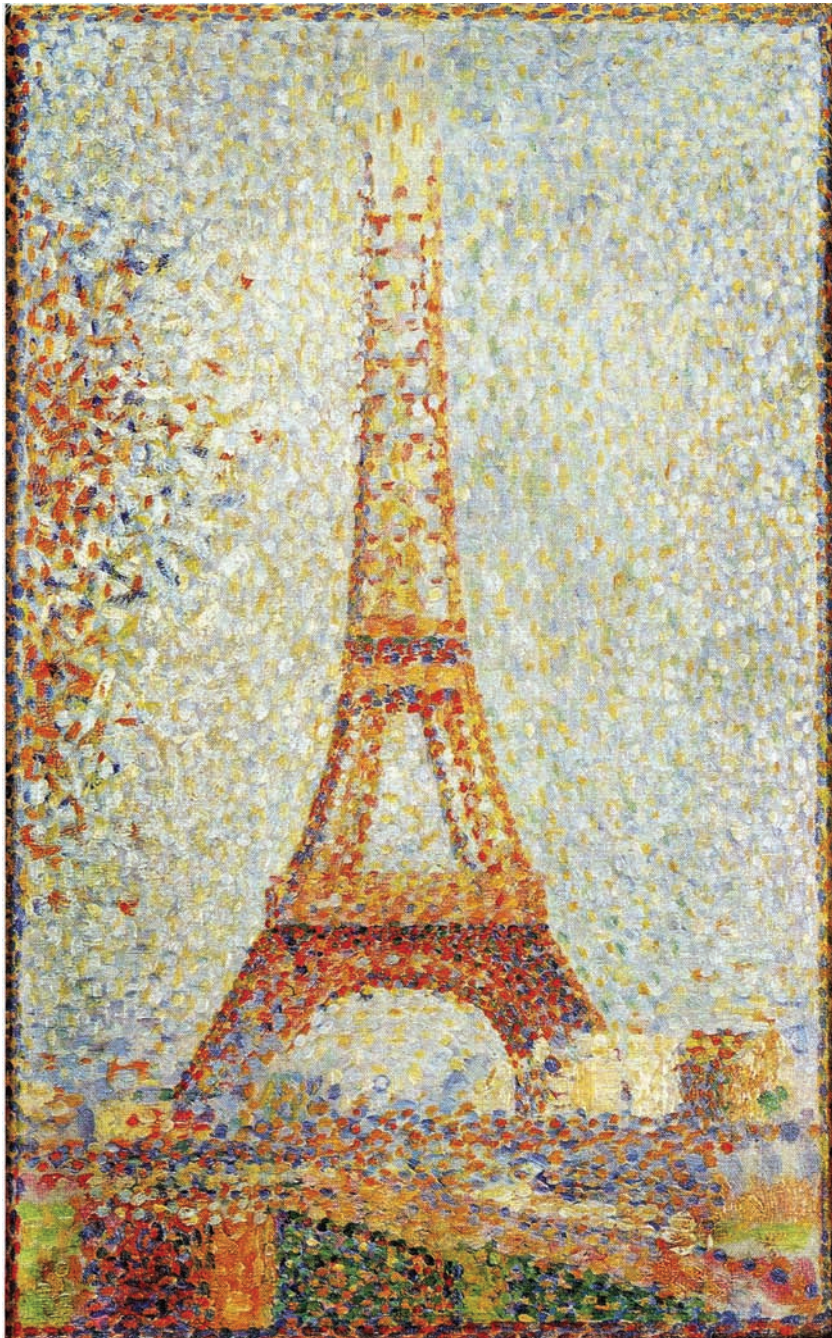
Marks

4. Natural Environment

- (a) What is your opinion of this public artwork? In your answer comment on at least **three** of the following: *materials used; form; scale; location*. **10**
- (b) Compare and contrast **two** works by different artists who were inspired by the natural environment. Explain why these are successful responses to the natural environment. **10**

[Turn over

SECTION 1—ART STUDIES (continued)



Eiffel Tower (1889) by Georges Seurat
oil on panel (24 × 15 cm)

5. Built Environment

Marks

- (a) What is your opinion of this painting? Comment on the artist's use of *colour*, *tone* and *scale* in this work. **10**
- (b) Comment on the media and methods used in **two** artworks by different artists who work in the theme of built environment. State why you think they are good examples of work in this theme. **10**

SECTION 1—ART STUDIES (continued)



Tameijiro dan Shogo grapples with his enemy under water (1828-29) by Kuniyoshi
woodblock colour print (36 × 25 cm)

6. Fantasy and Imagination

Marks

- (a) How well have the visual elements of *line*, *colour* and *shape* been used to create a sense of action and drama in this composition? 10
- (b) Compare and contrast **two** works by different artists associated with fantasy and imagination. Refer to the methods and materials that they use to communicate their ideas. 10

SECTION 2—DESIGN STUDIES

Instructions

Read your selected question and notes on the illustration carefully.

Answer **ONE full question** from this section: parts **(a)** and **(b)**.



Sgt Pepper's Lonely Hearts Club Band album cover (1967)
by Peter Blake and Jann Haworth (cover dimensions 31 × 31 cm)

7. Graphic Design

Marks

- (a) Give your opinion on how this design compares with the CD covers of today. Refer to **three** of the following: *text*; *imagery*; *layout*; *method of production*. **10**
- (b) Select **two** graphic designs by different designers. Explain the methods used to achieve originality and visual impact. **10**

SECTION 2—DESIGN STUDIES (continued)



Wii home video games console (2006) designed by Nintendo
approximate cost £149 (Jan 2012)

Marks

8. Product Design

- (a) In your opinion how successful is this design for a games console? Refer to **three** of the following: *function*; *target market*; *use of materials*; *ergonomics*; *aesthetics*; *cost*. 10
- (b) Describe and evaluate **two** similar products by different designers. In your answer explain how the design issues of aesthetics and function were considered. 10

[Turn over

SECTION 2—DESIGN STUDIES (continued)



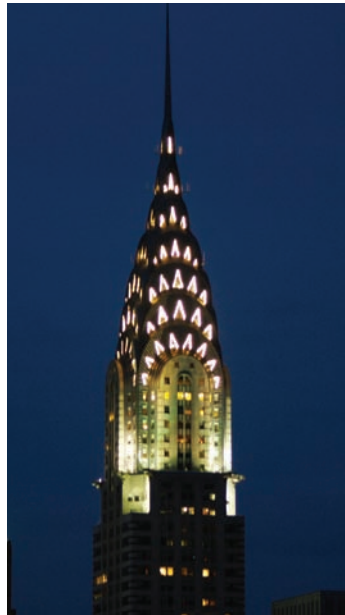
Saloon and oval staircase in Culzean Castle (1772–1792),
designed by Robert Adam

9. Interior Design

Marks

- (a) How well has the designer conveyed the wealth and status of the owners of this castle? Refer to use of *space*, *architectural details* and *colour*. 10
- (b) Compare and contrast **two** examples of interior designs by different designers. Explain how successful you think they were. Refer to **two** of the following: style; use of space; use of lighting; use of materials. 10

SECTION 2—DESIGN STUDIES (continued)



Chrysler Building, New York (1930), designed by William Van Alen
Steel supported brick construction, stainless steel cladding on crown.
Height: 318.9 metres, 77 floors.

10. Environmental/Architectural Design

Marks

- (a) In your view, how well has the designer created an impressive building? Refer to *form, scale* and *decoration*. **10**
- (b) Compare the work of **two** environmental or architectural designers. How well have they used form and materials to create their designs? **10**

SECTION 2—DESIGN STUDIES (continued)



Neckpiece from her Catwalk Collection (2006) designed by Elizabeth Galton
Materials: sterling silver and cut glass crystal.

Marks

11. Jewellery Design

- (a) What is your opinion of this neckpiece? Refer to *style, use of materials* and *function*. **10**
- (b) Compare and contrast **two** designs by different jewellery designers, with reference to inspiration and use of materials. How well do these designs meet the needs of their target market? **10**

SECTION 2—DESIGN STUDIES (continued)



Outfit (1911) designed by Paul Poiret
Materials: silk decorated with blue metallic foil and beaded embroidery.

12. Textile/Fashion Design

Marks

- (a) In your opinion, what is the function of this outfit and on what type of occasions might it have been worn? Refer to *sources of inspiration* and *form*. 10
- (b) Compare and contrast the work of **two** textile or fashion designers. Discuss how they have used materials and decoration to create striking designs. 10

[END OF QUESTION PAPER]

[BLANK PAGE]

[BLANK PAGE]

ACKNOWLEDGEMENTS

Section 1 Question 1—Painting, “*Self-portrait in a Flowered Jacket*” (1971–73) by John Patrick Byrne. Reproduced by permission of Scottish National Portrait Gallery.

Section 1 Question 2—Painting, “*The Seaside*” by William Roberts. Reproduced by permission of The William Roberts Society. Photo Credit: Tate, London © 2013.

Section 1 Question 3—Painting, “*The Table (Still life with Rabbit)*” by Joan Miro. Private Collection—unable to trace copyright holder.

Section 1 Question 4—Image of “*Conjoined*” by Roxy Paine. Permission is being sought from Roxy Paine Studio.

Section 1 Question 5—Georges Seurat, French, 1859-1891 “*Eiffel Tower*”, (ca. 1889). Oil on panel, 24.1 x 15.2 cm. The Fine Arts Museum of San Francisco, museum purchase, William H. Noble Bequest Fund, 1979.48

Section 1 Question 6—Print, “*The Heroes of Suikoden: Tameijiro dan Shogo grapples with his enemy under water*” (1828-29) by Kunyoshi. Public Domain.

Section 2 Question 7—Album cover, “*Sgt Pepper’s Lonely Hearts Club Band*” designed by Peter Blake and Jann Haworth. Reproduced by kind permission of Apple Corps Ltd. © Apple Corps Ltd.

Section 2 Question 8—Images of Wii home video games console (2006) designed by Nintendo. Permission is being sought from Nintendo.

Section 2 Question 9—Two photographs of the interior of Culzean Castle are reproduced by kind permission of Culzean Castle, National Trust for Scotland.

Section 2 Question 10—Images of the Chrysler Building designed by William Van Alen. Unable to trace copyright holders.

Section 2 Question 11—Images of Neckpiece from her Catwalk Collection (2006) designed by Elizabeth Galton. Permission is being sought from Elizabeth Galton.

Section 2 Question 12—Images of Outfit (1911) designed by Paul Poiret. Permission is being sought from Metropolitan Museum of Art.