

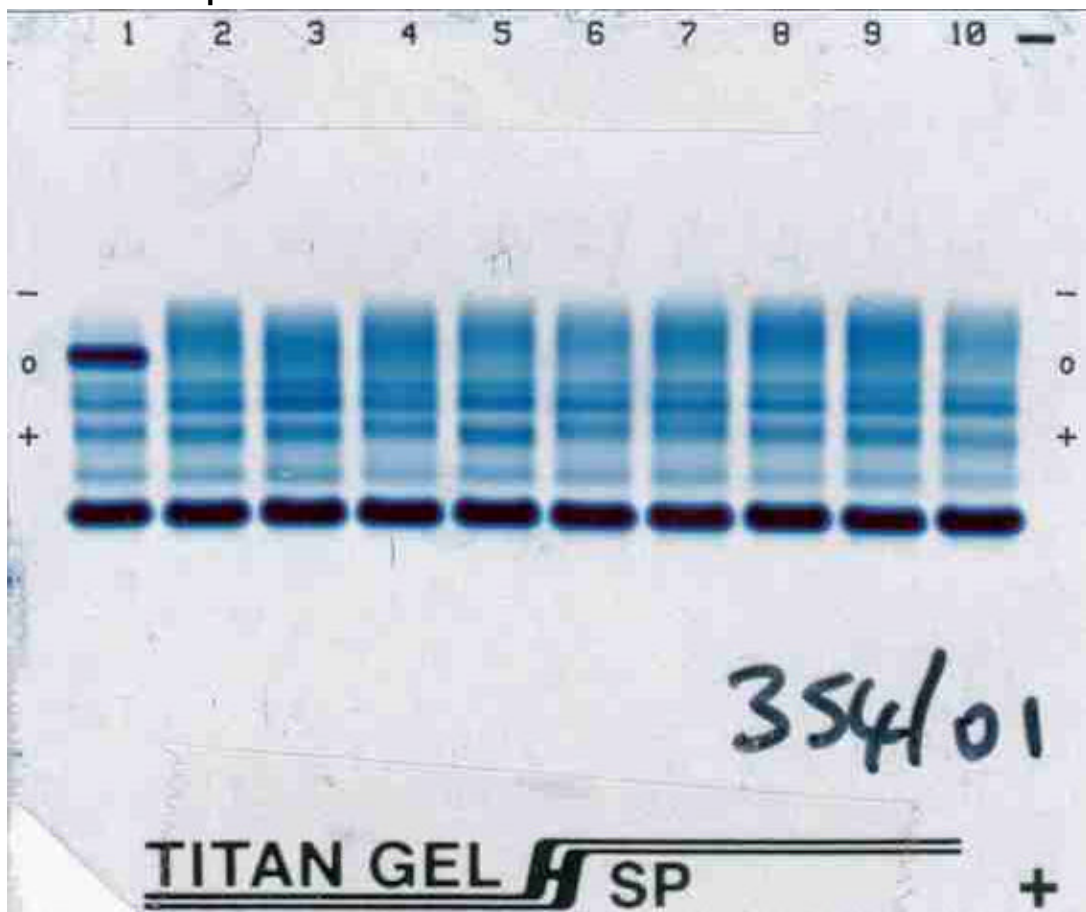
OSPE Data for website

Question 1

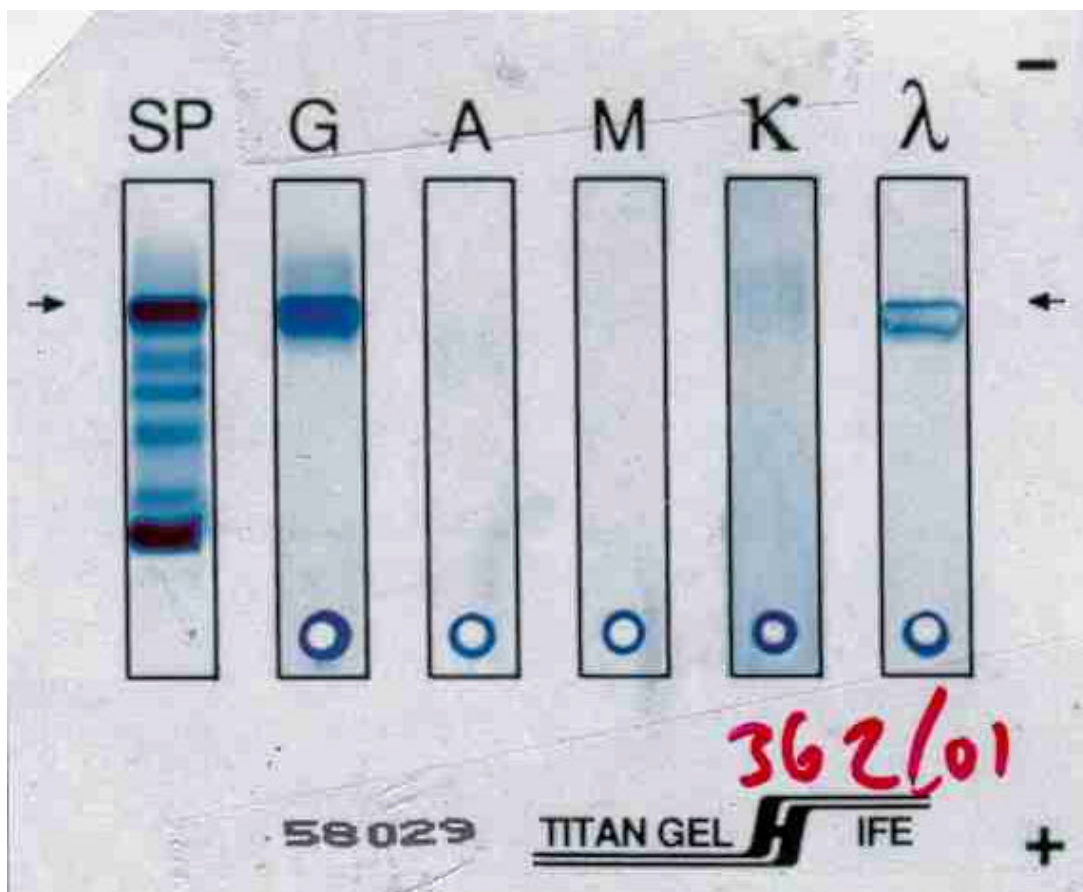
- 1 Captopril (Angiotensin converting enzyme inhibitor)
- 2 Phenytoin (Anticonvulsant)
- 3 Omeprazole (Proton pump inhibitor)
- 4 Fluoxetine (Selective Serotonin re-uptake inhibitor)
- 5 Atorvastatin (HMG CoA reductase inhibitor)
- 6 Chlorpromazine (Phenothiazine)

A copy of the British National Formulary and data sheet compendium are provided for your use.

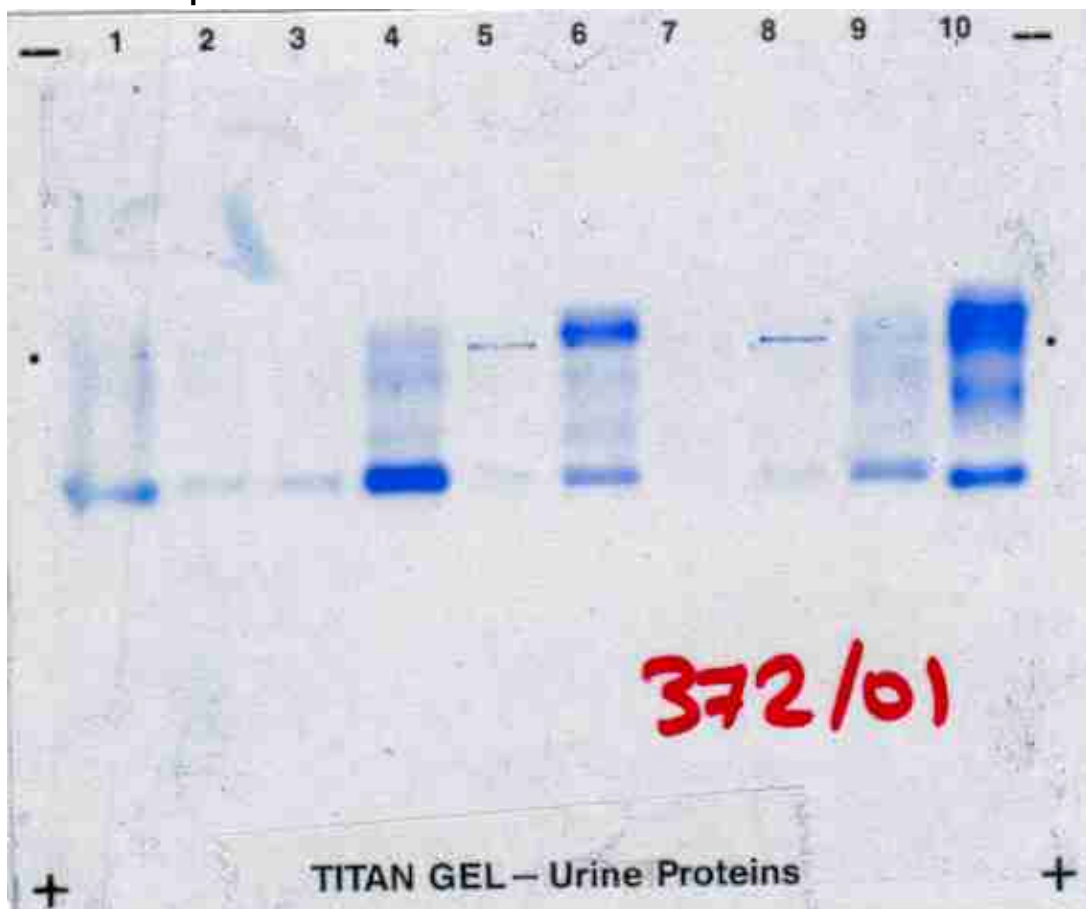
Question 2
Serum Electrophoresis



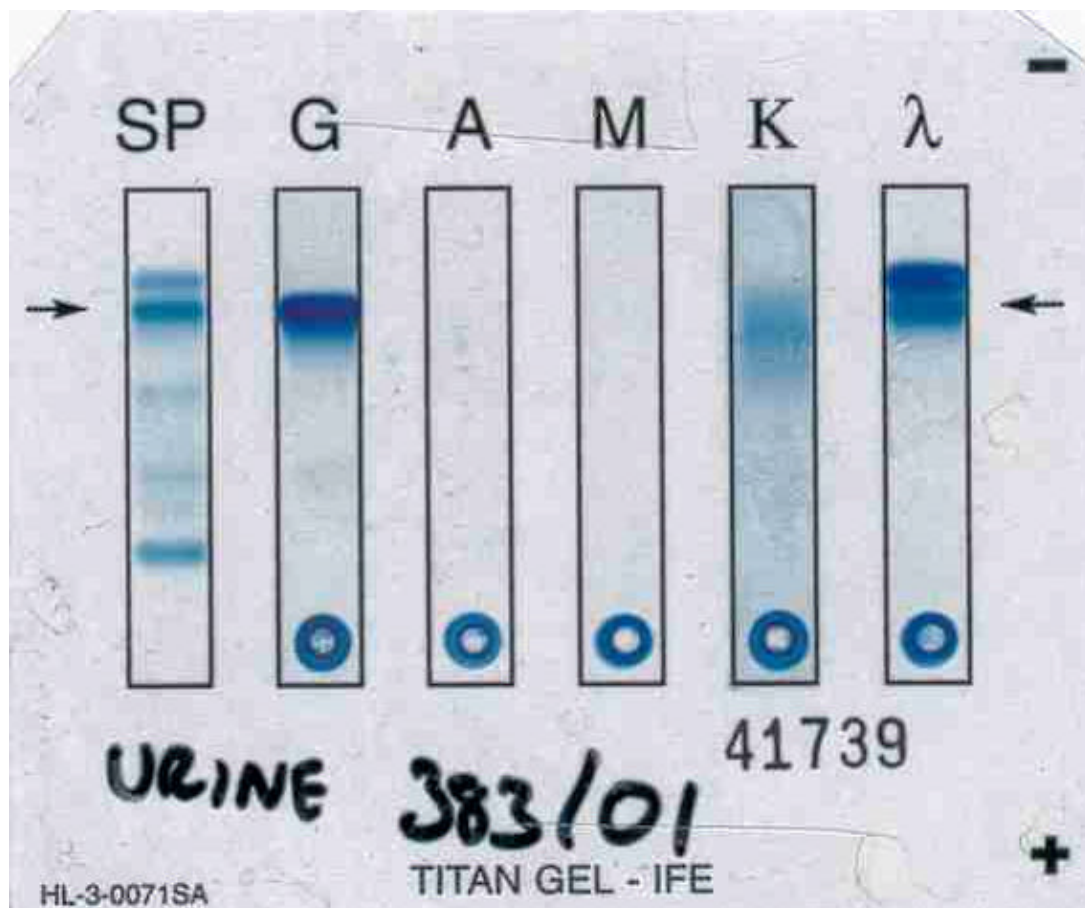
Immunofixation of sample in Lane 1



Question 2
Urine Electrophoresis

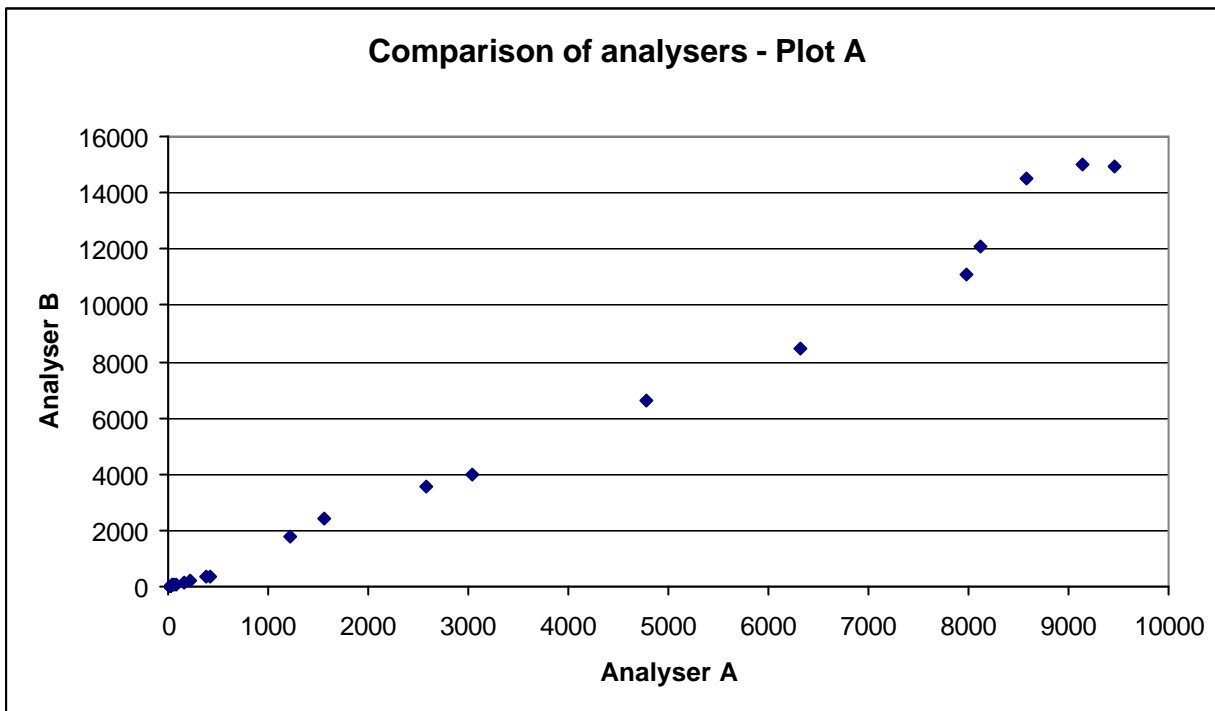


Immunofixation of sample in Lane 6

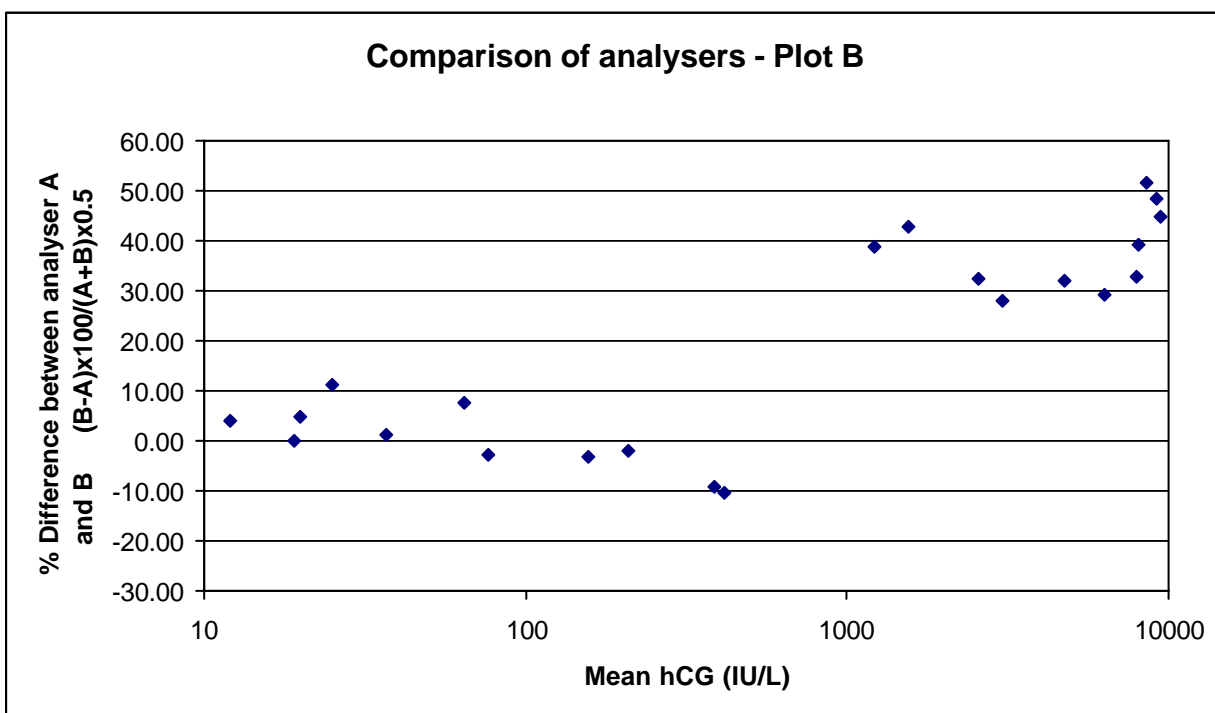


Question 4

Two methods for human chorionic gonadotrophin have been compared in preparation for moving the assay from one analyser (A) to another (B). Suitable positive samples have been analysed on both analysers and the results plotted below in 2 different ways.



The linear regression equation for all values is: $y = 1.55x - 178$.



Question 5

- a) A phone call from a General Practitioner wanting to know which samples to take to assist in the diagnosis of myeloma in a patient with osteoporosis.
- b) A phone call from a registrar in medical outpatients considering the diagnosis of familial benign hypercalcaemia as the cause of an elevated serum calcium in a 23 year old woman.
- c) A call from a house officer on an orthopaedic ward at midday asking when to take a sample for digoxin from a patient who had been given their daily digoxin dose at 8 a.m.