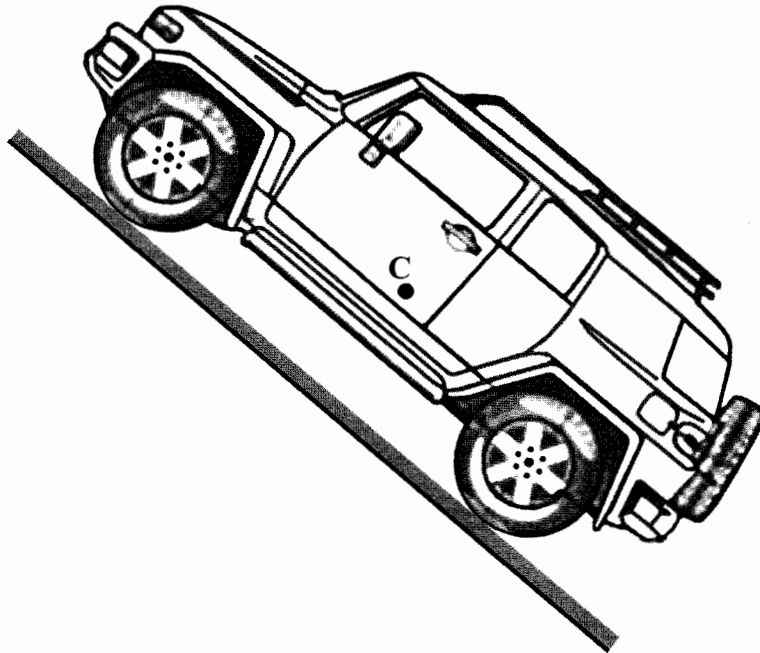




Answer ALL the questions.

1. The diagram shows a car which can climb extremely steep roads at a constant speed.



(a) Calculate the weight of such a car of mass 2500 kg.

..... (1)

(b) The centre of gravity of the car is marked with a dot C. Add an arrow to the diagram to show the direction and line of action of the weight of this car. Label this arrow **W**.

(1)

(c) The ground exerts a frictional force on each wheel of the car. Add an arrow to the diagram to show the direction and line of action of the frictional force acting on the front wheel of the car. Label this arrow **F**.

(2)

(d) The ground exerts a normal reaction force on each wheel of the car. Add an arrow to the diagram to show the direction and line of action of the reaction force acting on the front wheel of the car. Label this arrow **R**.

(2)

(e) Give a reason why it would be unsafe for the centre of gravity to be located nearer the back of such a car on this steep road.

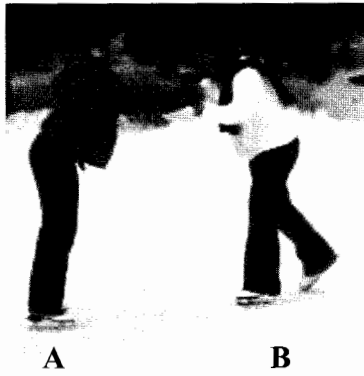
.....  
..... (1)

(Total 7 marks)

Q1



2. The picture shows ice skater **A** facing ice skater **B**. They are at rest on the ice.



(a) What is the total momentum of the two skaters?

..... (1)

(b) Is momentum a scalar quantity or a vector quantity?

..... (1)

(c) The two skaters push away from each other and move in opposite directions.

(i) Skater **B** has a mass of 30 kg and moves to the right with a velocity of 3.2 m/s. Calculate the momentum of skater **B**.

.....  
.....  
.....  
..... (2)

(ii) What is the momentum of skater **A**?

..... (1)

(iii) Skater **A** has a mass of 40 kg. Calculate the velocity of skater **A**.

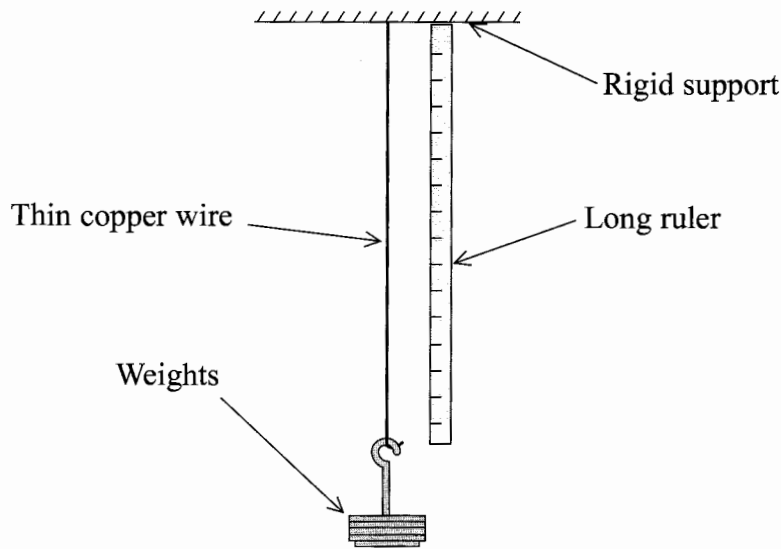
.....  
.....  
.....  
..... (2)

(Total 7 marks)

Q2



3. The diagram shows an arrangement for stretching a thin copper wire.



The results obtained were as follows:

Weight / N	0	4	8	12	16	20
Extension / mm	0.0	0.5	1.0		2.0	3.4

(a) What was the extension when the weight was 12 N?

..... (1)

(b) (i) Over what range of readings is it certain that the wire obeys Hooke's law?

..... (1)

(ii) Give a reason for your answer.

..... (1)

(c) What would be the effect on the length of the wire if the weight is removed after

(i) an extension of 1.0 mm is reached

..... (1)

(ii) an extension of 3.4 mm is reached?

..... (1)



Leave  
blank

(d) Explain your answers to c(i) and c(ii).

.....

.....

.....

.....

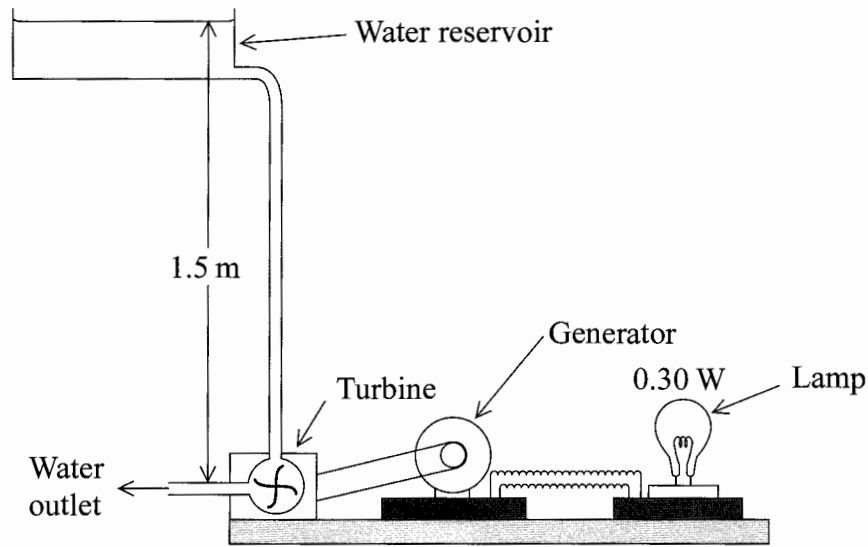
(2)

Q3

(Total 7 marks)



4. The diagram shows an apparatus which demonstrates how a hydroelectric power station works. The water from the reservoir flows at a steady rate and the lamp works normally.



(a) The power of the lamp when working normally is 0.30 W.

(i) How much electrical energy is supplied to the lamp in one second?

..... (1)

(ii) The turbine and the generator have a combined efficiency of 40%. Show that 0.75 J of energy must be supplied to the turbine in one second, when the lamp is working normally.

.....  
 .....  
 ..... (1)

(iii) Calculate the mass of water which flows through the turbine in one second when the lamp is working normally.

.....  
 .....  
 ..... (3)

(b) When the lamp is working normally the amount of light energy emitted per second is only 0.075 J. What other form of energy is emitted by the lamp?

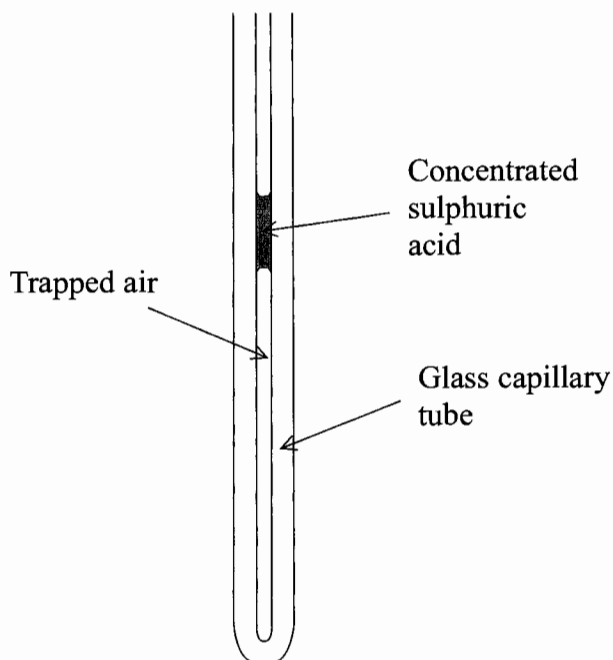
..... (1)

(Total 6 marks)

Q4



5. The diagram shows a small amount of air trapped in an open capillary tube by a pellet of concentrated sulphuric acid.



- (a) How will the motion of the molecules of trapped air change when the temperature is increased?

..... (1)

- (b) Explain why the volume of the trapped air does not double when the temperature rises from 25 °C to 50 °C.

.....  
 .....  
 .....  
 ..... (2)

- (c) Why is concentrated sulphuric acid, rather than another liquid, used to trap the air?

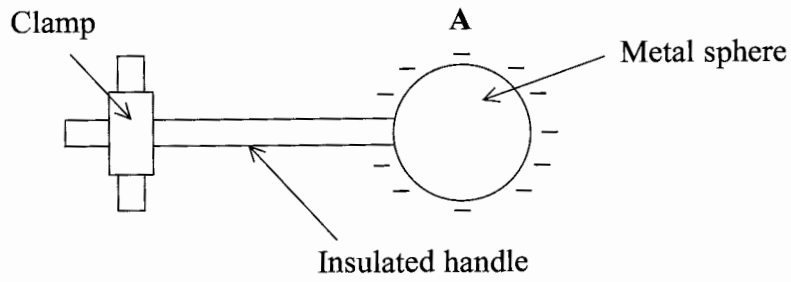
.....  
 .....  
 .....  
 ..... (2)

(Total 5 marks)

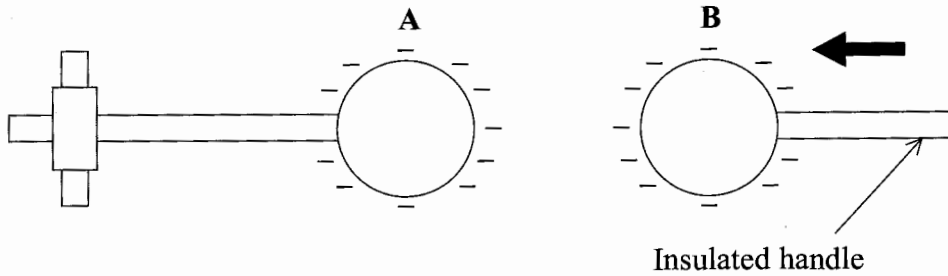
Q5



6. The diagram shows a negatively-charged metal sphere **A** with a clamped insulated handle.



A similar negatively-charged sphere **B** is brought near to **A** using its insulated handle as shown below.



- (a) (i) Explain why a force is required to move **B** towards **A**.

.....  
.....  
(2)

- (ii) As **B** is brought closer to **A**, state whether the size of the force gets bigger, remains the same or gets smaller.

.....  
(1)





(b) **A** is now earthed. When **B** is very close to **A**, a spark jumps between the spheres. When the potential difference between the spheres is 5000 V, the energy in the spark is 0.0080 J.

Calculate:

(i) the charge passing between the spheres

.....  
.....  
.....

(2)

(ii) the time for this charge to pass if the power in the spark is 2.0 W.

.....  
.....  
.....

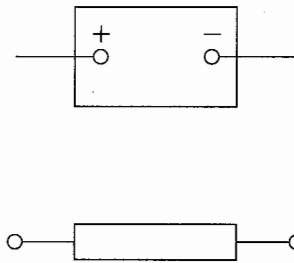
(2)

(Total 7 marks)

Q6



7. The diagram shows a low voltage power supply and a resistor.



(a) Add to the diagram an ammeter  $\text{---} \text{A} \text{---}$  and a voltmeter  $\text{---} \text{V} \text{---}$  to show a circuit suitable for measuring the resistance of the resistor.

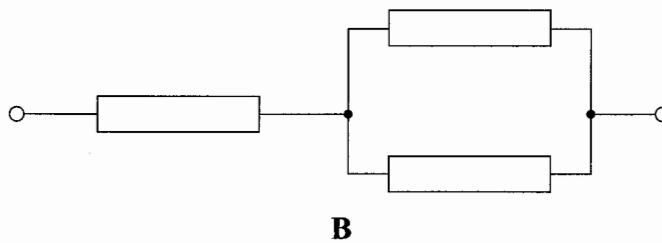
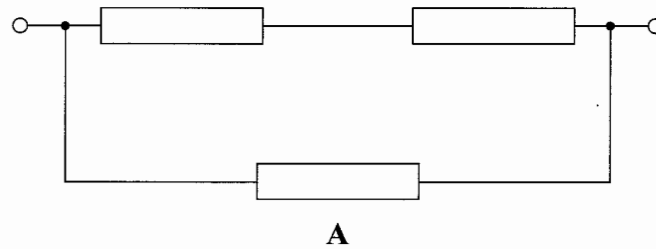
(2)

(b) Which of the two meters should have a very high resistance?

.....  
(1)

(c) The resistor is replaced by one of the combination of resistors, **A** or **B**, shown below.

Each individual resistor has a resistance of  $4 \Omega$ .



(i) Calculate the resistance of each combination.

.....  
.....  
.....  
.....  
.....  
.....  
.....  
.....

Resistance of combination **A** = .....

Resistance of combination **B** = .....

(3)

(ii) Which of the combinations, **A** or **B**, would allow the greater current to pass when connected to the low voltage power supply? Put a cross (☒) in the correct box.

**A** ☒

**B** ☒

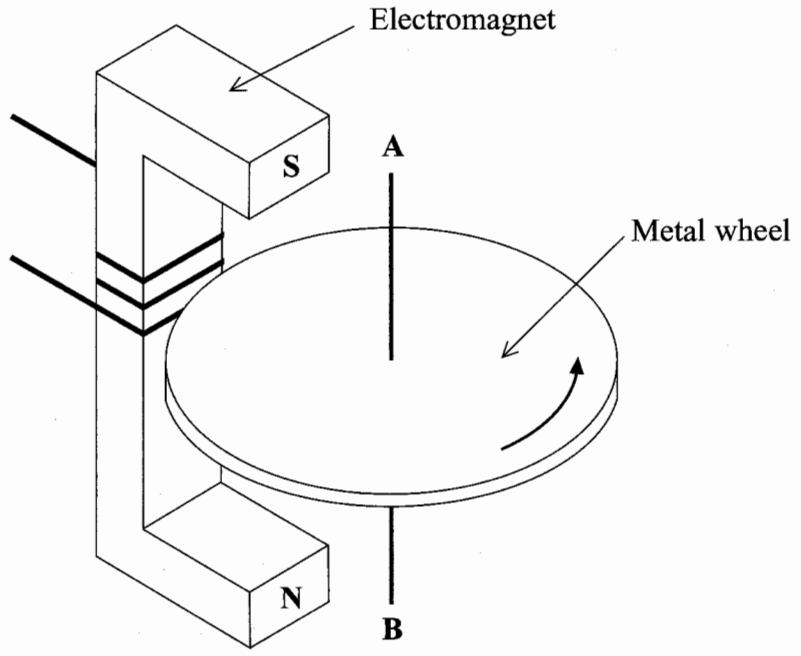
(1)

(Total 7 marks)

Q7



8.



(a) The diagram shows an electromagnet and a rotating metal wheel. The metal wheel is rotating about the axis **AB**.

When the electromagnet is switched on it acts as a brake on the wheel.

(i) On the diagram above, draw, with a direction, one magnetic line of force due to the electromagnet. (1)

(ii) Explain why there is a current in the rotating metal wheel.

.....

.....

.....

.....

.....

.....

(3)



(b) As the wheel slows down, the braking effect of the electromagnet becomes less.

On the axes below sketch a graph of speed of the wheel against time after the electromagnet is switched on.



(2)

(c) (i) Does the temperature of the rotating wheel increase using this electromagnet as a brake? Put a cross (X) in the correct box.

Yes  No

(1)

(ii) Explain your answer.

.....  
.....  
.....  
.....

(1)

(Total 8 marks)

Q8



9. (a) Complete the table below with values of the relative masses and charges for the nucleons.

	mass	charge
electron	1	-1
proton		
neutron		

(2)

(b) Name an ionising radiation that does not contain any of the three particles shown in (a).

..... (1)

(c) (i) When the three particles in (a) all travel at the same speed at right angles to a magnetic field, which one has the greatest deflection? Put a cross (☒) in the correct box.

- electron
- proton
- neutron

(1)

(ii) Explain your answer.

.....  
 .....  
 .....  
 .....

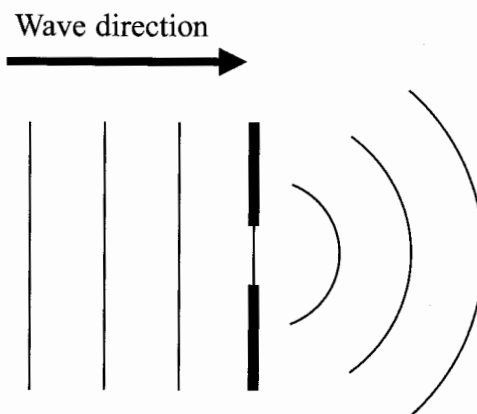
(1)

(Total 5 marks)

Q9



10. (a) The diagram shows microwaves passing through a gap.



(i) State the name of this phenomenon.

.....  
 (1)

(ii) Account for the shape of the waves emerging from the gap.

.....  
 .....  
 (1)

(b) These microwaves are part of the electromagnetic spectrum and have a wavelength of 0.060 m and a speed of 300 000 000 m/s.

(i) Calculate the frequency of these waves.

.....  
 .....  
 .....  
 (2)

(ii) State why light waves would behave differently when passing through the same gap.

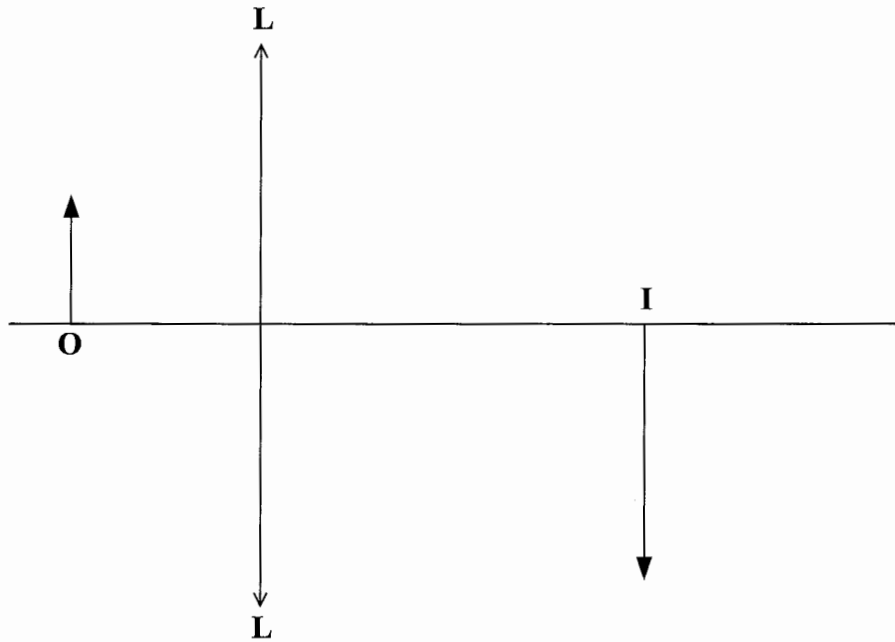
.....  
 .....  
 (1)

(Total 5 marks)

Q10



11. (a) The diagram shows an object **O** placed near a converging lens **LL**. The image formed is labelled **I**.



(i) Add two suitable rays to the diagram to show how the image is formed. (2)

(ii) Mark the position of the principal focus of the lens and label it **F**. (1)

(iii) Is the nature of this image real or virtual? Put a cross (☒) in the correct box.

Real       Virtual  (1)

(b) The object is moved further away from the lens.

(i) Which of the sentences below is true? Put a cross (☒) in the correct box.

The size of the image is less than before   
 The size of the image is the same as before   
 The size of the image is greater than before  (1)

(ii) Is the nature of the image real or virtual? Put a cross (☒) in the correct box.

Real       Virtual  (1)

(Total 6 marks)

Q11

**TOTAL FOR PAPER: 70 MARKS**

**END**

