



UNIVERSITY OF CAMBRIDGE INTERNATIONAL EXAMINATIONS
General Certificate of Education Ordinary Level

METALWORK

6040/02

Paper 2 Practical Test

October/November 2007

3 hours

Additional Materials:

As listed in the Instructions to Supervisors

READ THESE INSTRUCTIONS FIRST

Please see page 2.

All dimensions are in millimetres unless stated otherwise.



This document consists of **4** printed pages and **2** blank pages.



From the materials supplied you are to make the HOLE PUNCH shown in the drawings.
You will be required to add further shaping to Part 5 as stated in the Working Procedures below.
All dimensions are in millimetres.

The following materials are supplied:

- Part 1 One piece BDMS $40 \times 5 \times 110$ long. Both ends square.
- Part 2 One piece BDMS $16 \times 16 \times 50$ long. Both ends square.
- Part 3 One piece BDMS $12 \times 12 \times 50$ long. Both ends square.
- Part 4 One piece BDMS $12 \times 3 \times 30$ long. Both ends square.
- Part 5 One piece BDMS $\text{Ø}10 \times 140$ long. Both ends square.
- Part 6 One piece BDMS $\text{Ø}6 \times 40$ long. Prepared prior to the examination.
- Part 7 One piece BDMS $12 \times 3 \times 12$ long. Both ends square.

Two $\text{Ø}4 \times 25$ long round head rivets (snap head rivets).

One M6 $\times 15$ long countersunk head screw.

One M5 $\times 20$ long cheese head or round head screw and nut.

One bag in which to enclose the work.

Two tie-on labels.

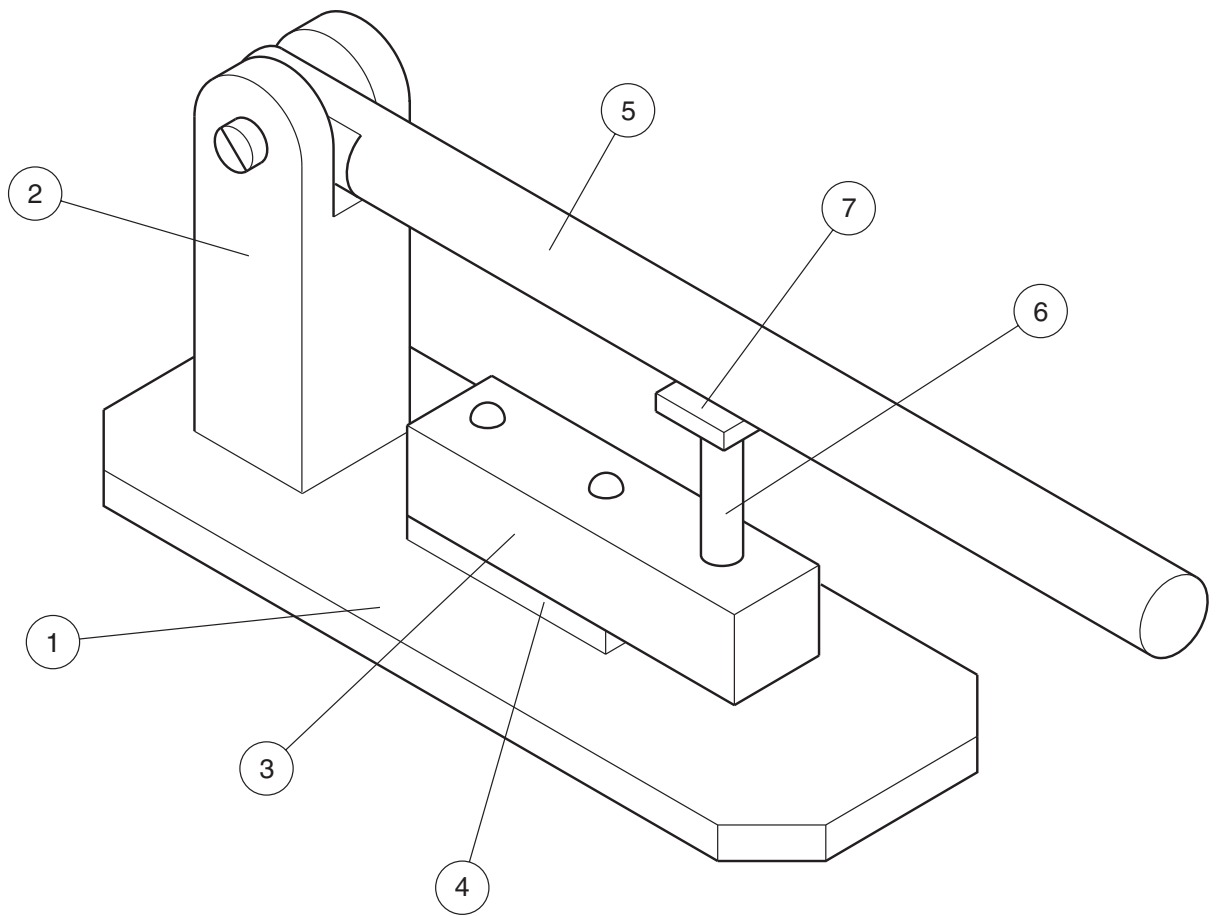
Notes

Working Procedures

- A Part 5 should be shaped at the handle end so that it is comfortable to hold.
- B Part 7 should be shaped to remove the sharp corners.
- C After shaping, Part 7 is silver soldered to Part 6 and the joint filed flat.
- D Part 3 and Part 4 are riveted to Part 1 using the round head rivets supplied and the underside filed flat.
- E Part 2 is fixed to Part 1 with the M6 countersunk head screw supplied.
- F Part 5 is held in Part 2 with the M5 screw and nut supplied.

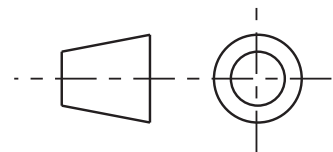
General Notes

- A second supply of material is **not** allowed. If you make a mistake do your best to work as near the drawing as possible.
- Any dimensions omitted are left to your discretion.
- Attempt to complete the work but remember that a partly completed piece of work of good quality may gain more marks than one which is complete but inaccurate or poorly finished.
- Clean up all parts by draw filing. Emery cloth or similar must not be used.
- Write your **name and examination number** on both labels supplied, attach one to your work and the other to the bag in which your work is enclosed. Put all worked and unworked materials into the bag, with the exception of waste.

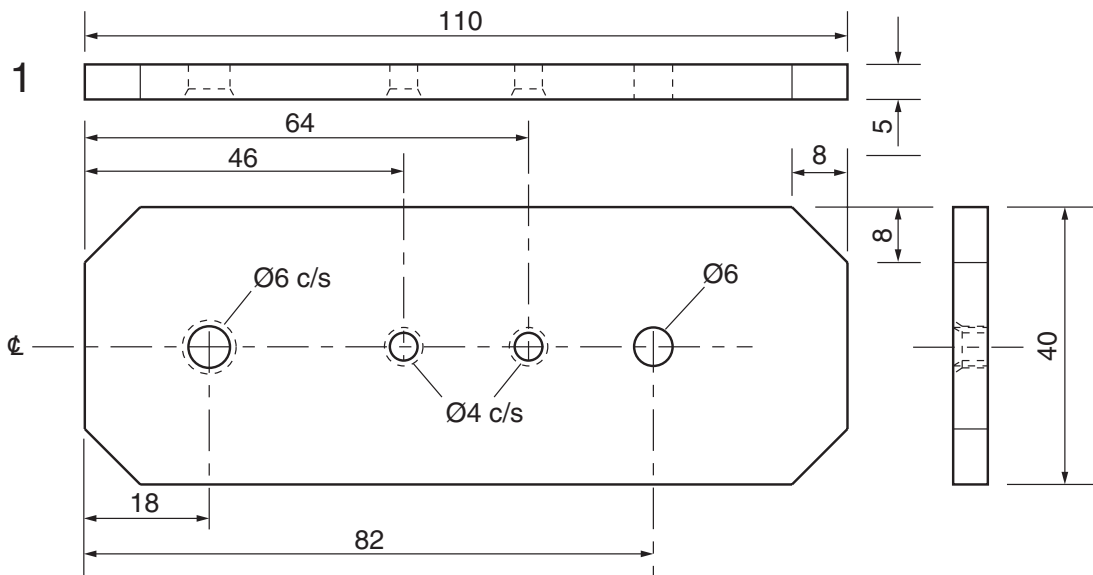


HOLE PUNCH

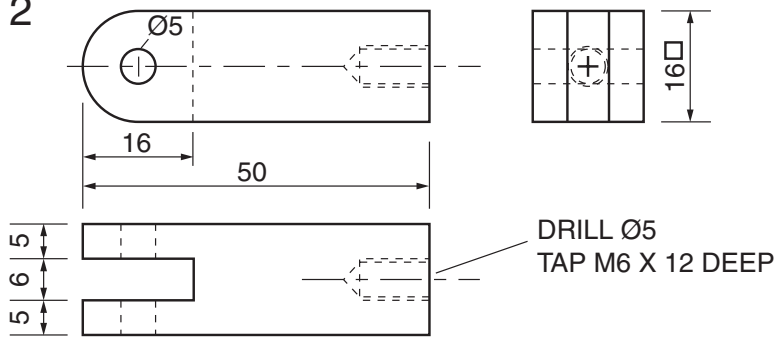
DIMENSIONS IN MILLIMETRES



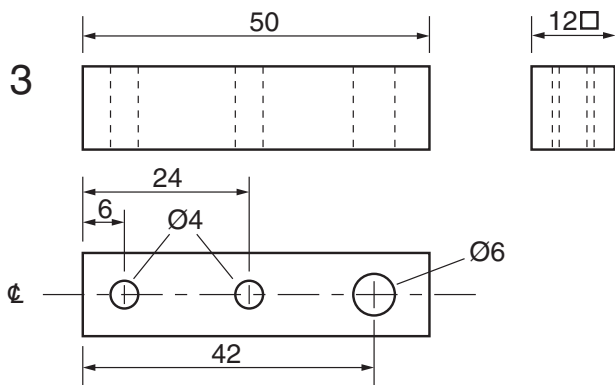
PART 1



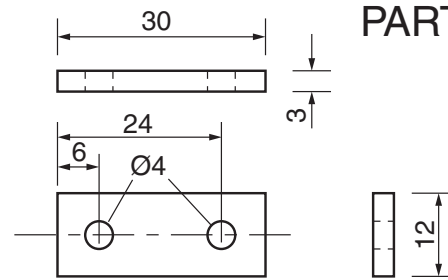
PART 2



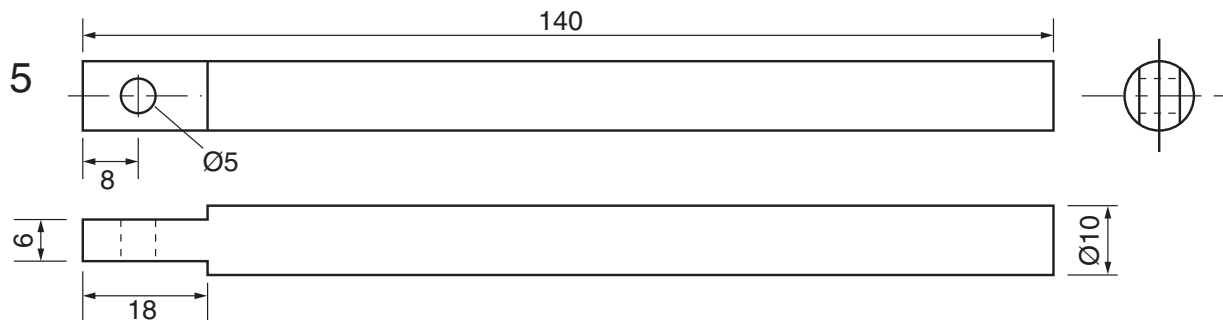
PART 3



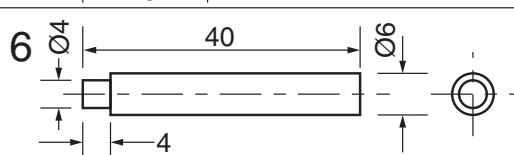
PART 4



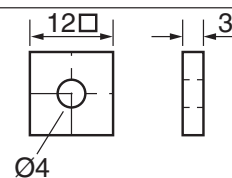
PART 5



PART 6



PART 7



BLANK PAGE

FOLD OUT THIS PAGE

BLANK PAGE

Permission to reproduce items where third-party owned material protected by copyright is included has been sought and cleared where possible. Every reasonable effort has been made by the publisher (UCLES) to trace copyright holders, but if any items requiring clearance have unwittingly been included, the publisher will be pleased to make amends at the earliest possible opportunity.

University of Cambridge International Examinations is part of the Cambridge Assessment Group. Cambridge Assessment is the brand name of University of Cambridge Local Examinations Syndicate (UCLES), which is itself a department of the University of Cambridge.