

UNIVERSITY OF CAMBRIDGE INTERNATIONAL EXAMINATIONS
General Certificate of Education Ordinary Level

METALWORK

6040/02

Paper 2 Practical Test

October/November 2004

3 hours

Additional Materials:
As listed in Instructions to Supervisors

INSTRUCTIONS TO CANDIDATES

Please see page 2.

INFORMATION FOR CANDIDATES

All dimensions are in millimetres unless stated otherwise.

This document consists of **4** printed pages and **2** blank pages.



From the materials supplied you are to make the EMBOSSING TOOL shown in the drawing.

All dimensions are in millimetres.

The following material is supplied:

- Part 1 One piece bright drawn mild steel 18 × 3 × 172 long.
- Part 2 One piece bright drawn mild steel 18 × 3 × 135 long. Both ends squared.
- Part 3 One piece bright drawn mild steel 18 × 3 × 37 long. One end squared.
- Part 4 One piece bright drawn mild steel 12 × 12 × 11 long. Both ends squared.
- Part 5 One piece bright drawn mild steel 12 diameter × 28 long, prepared prior to the examination.
- Part 6 One piece bright drawn mild steel 12 diameter × 6 long, prepared prior to the examination.
- Part 7 One piece bright drawn mild steel 12 diameter × 36 long, prepared prior to the examination.
- Part 8 One piece bright drawn mild steel 12 × 3 × 18 long. Both ends squared.

One Ø6 × 12 snap head rivet.

One bag in which to enclose work.

Two tie-on labels.

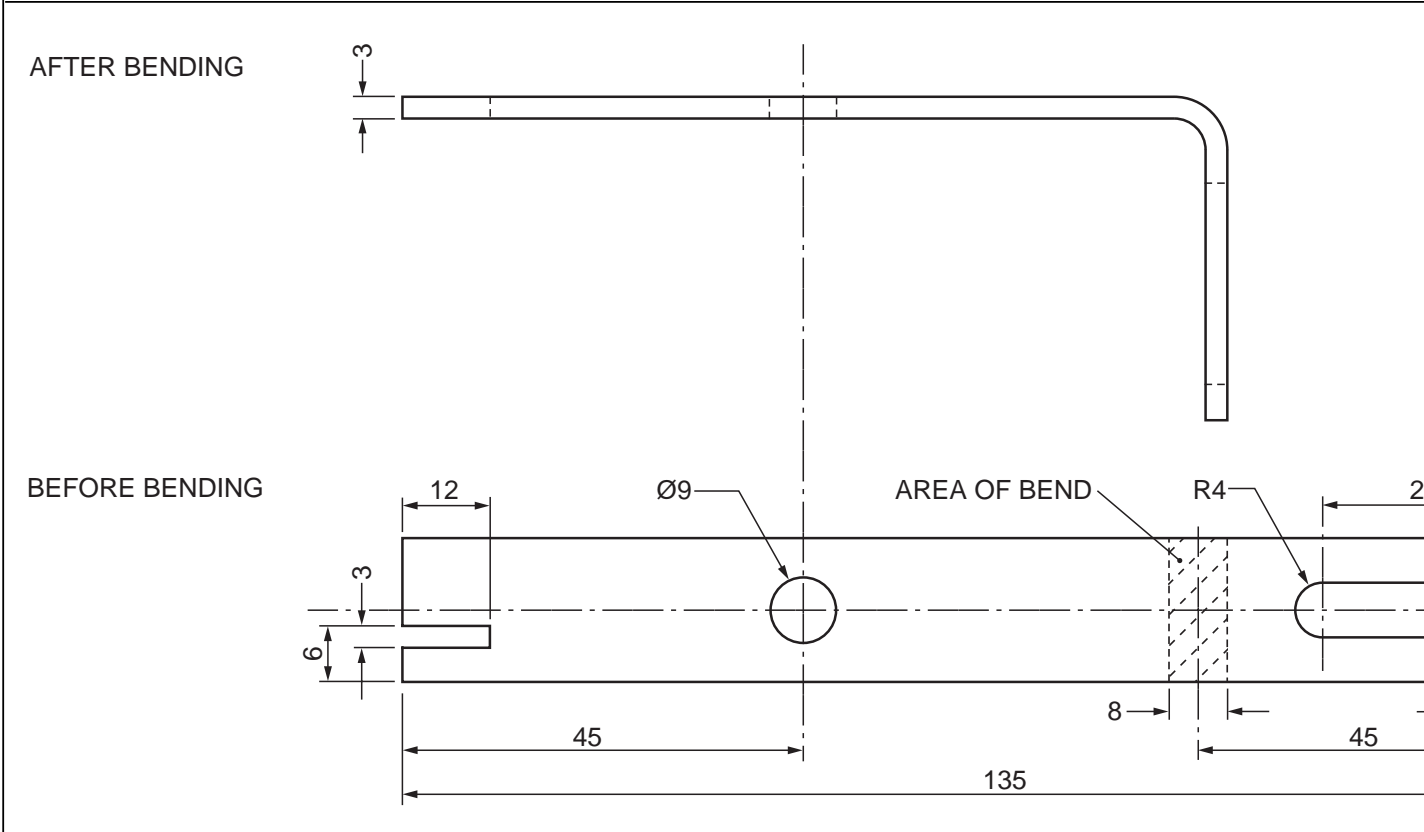
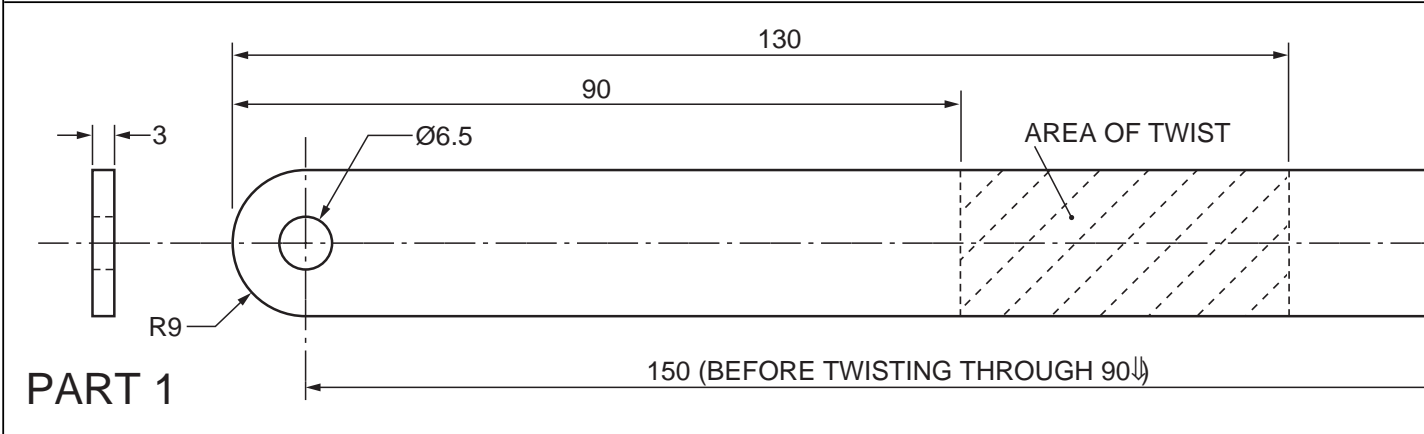
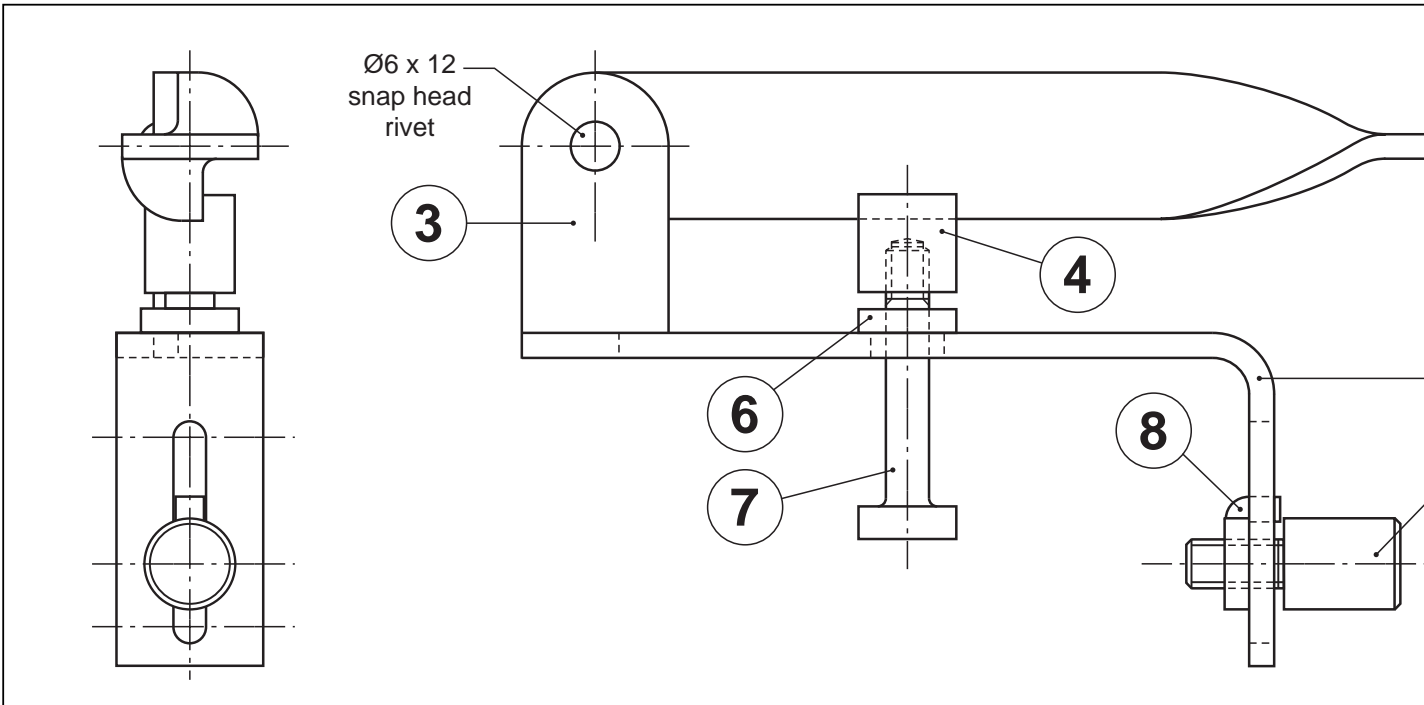
Notes

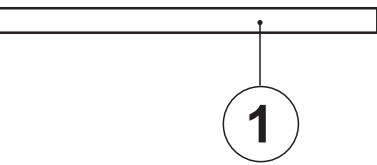
Working Procedures

- A Part 1 is twisted through 90° as indicated
- B Part 2 is bent at 90° as indicated
- C Part 3 is silver soldered onto Part 2
- D Part 6 is silver soldered onto Part 2
- E Part 1 is loose riveted to Part 3 to give a moving joint
- F Part 8 is bent at 90° as indicated

General Notes

- A second supply of material is **not** allowed. If you make a mistake do your best to work as near to the dimensions given in the drawing as possible.
- Any dimensions omitted are left to your discretion.
- Attempt to complete all the work but remember that a partly completed piece of work of good quality may gain more marks than one which is complete but inaccurate or poorly finished.
- Clean up all parts by draw filing. Emery cloth or similar must **not** be used.
- Write your **name and examination number** on the labels supplied, attach **one** to your work and **the other** to the bag in which your work is enclosed. Put into the bag all worked and unworked materials, with the exception of waste.

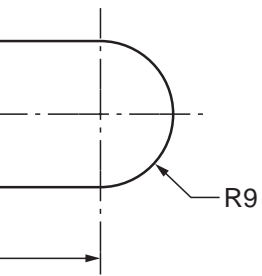




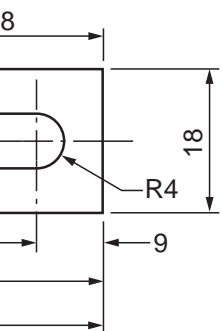
2
5

EMBOSSING TOOL

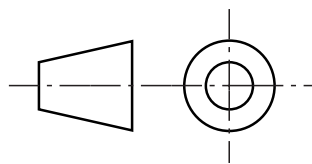
Modified for test purposes



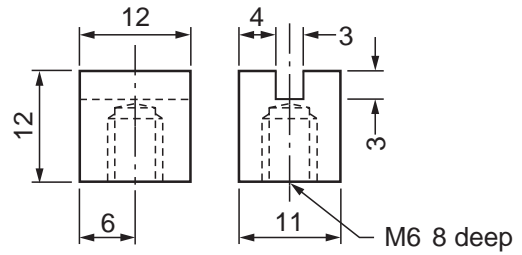
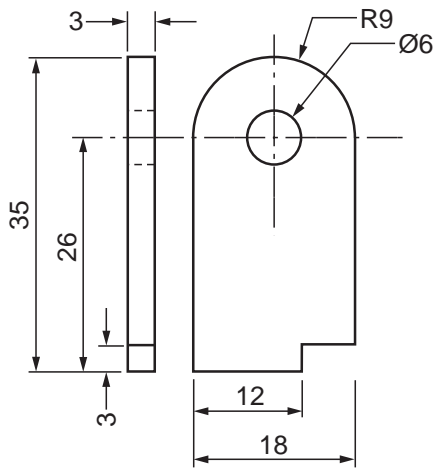
PART 2



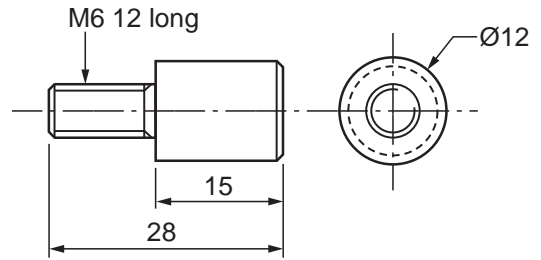
PART 3



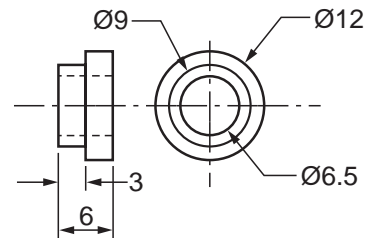
Dimensions in millimetres



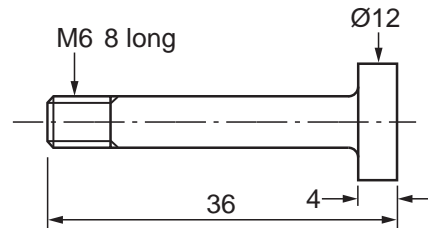
PART 4



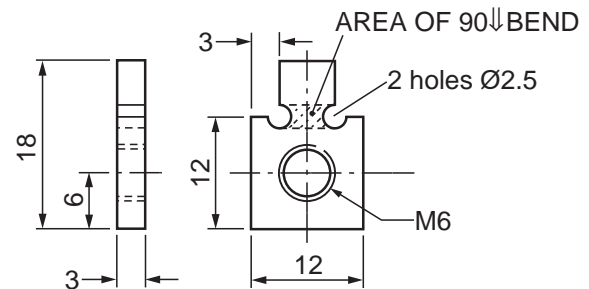
PART 5 (supplied)



PART 6 (supplied)



PART 7 (supplied)



PART 8

BLANK PAGE

FOLD OUT THIS PAGE

