

CAMBRIDGE INTERNATIONAL EXAMINATIONS
General Certificate of Education Ordinary Level

METALWORK

6040/02

Paper 2 Practical Test

October/November 2003

3 hours

Additional Materials:
As listed in Instructions to Supervisors

INSTRUCTIONS TO CANDIDATES

Please see page 2.

INFORMATION FOR CANDIDATES

All dimensions are in millimetres unless stated otherwise.

This document consists of **4** printed pages and **2** blank pages.



From the materials supplied you are to make the BEAM COMPASS shown in the drawing. It has been modified for examination purposes.

All dimensions are in millimetres.

The following material is supplied:

- Part 1 One piece bdms 12 x 12 x 42 long. Both ends squared.
- Part 2 One piece bdms 12 x 12 x 42 long. Both ends squared.
- Part 3 One piece bdms 24 x 36 x 3
- Part 4 One piece bdms 12 x 3 x 25 long. One end squared.
- Part 5 One piece bdms $\text{\O}6$ x 25 long. One end lightly chamfered.
- Part 6 One piece bdms 12 x 1 x 16 long. Both ends squared.
- Parts 7 and 8 Two pieces bdms $\text{\O}6$ x 150 long. Both ends faced and lightly chamfered.
- Part 9 One piece bdms 15 diameter x 30 long, prepared prior to the examination.

One $\text{\O}3$ x 18 snap head rivet (or imperial equivalent)
One bag in which to enclose work.
Two tie on labels.

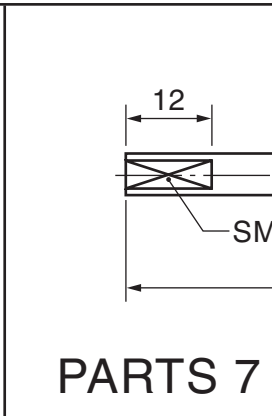
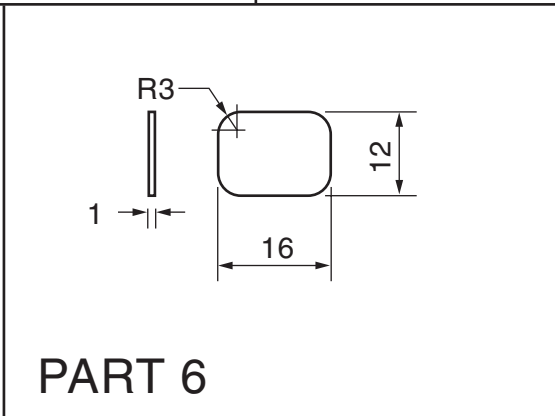
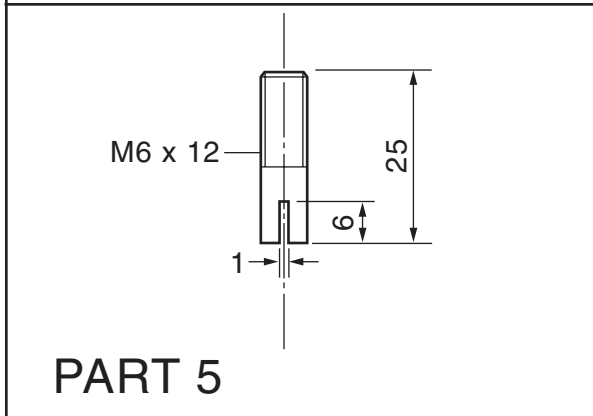
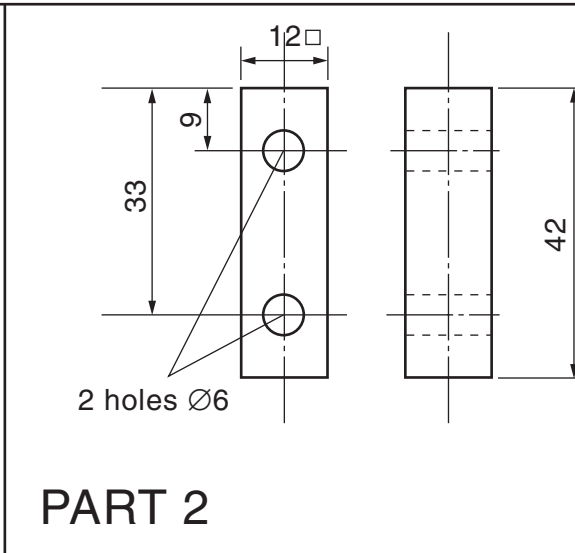
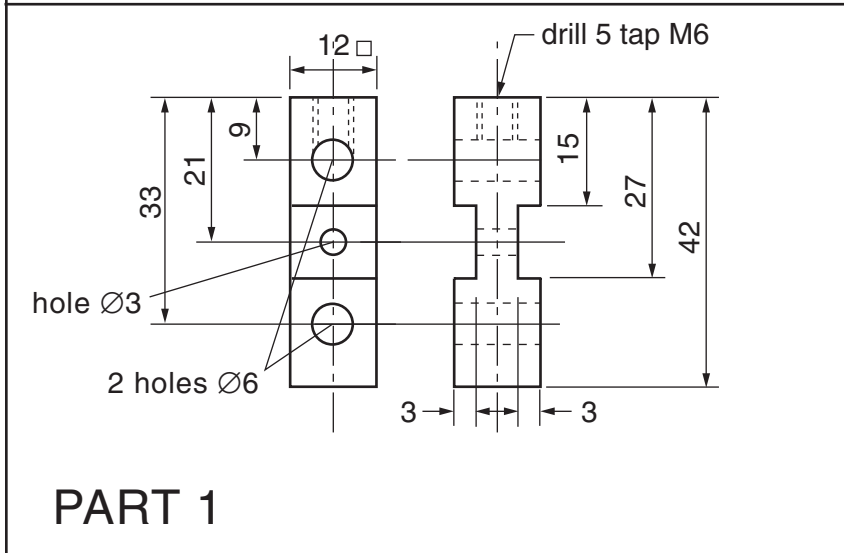
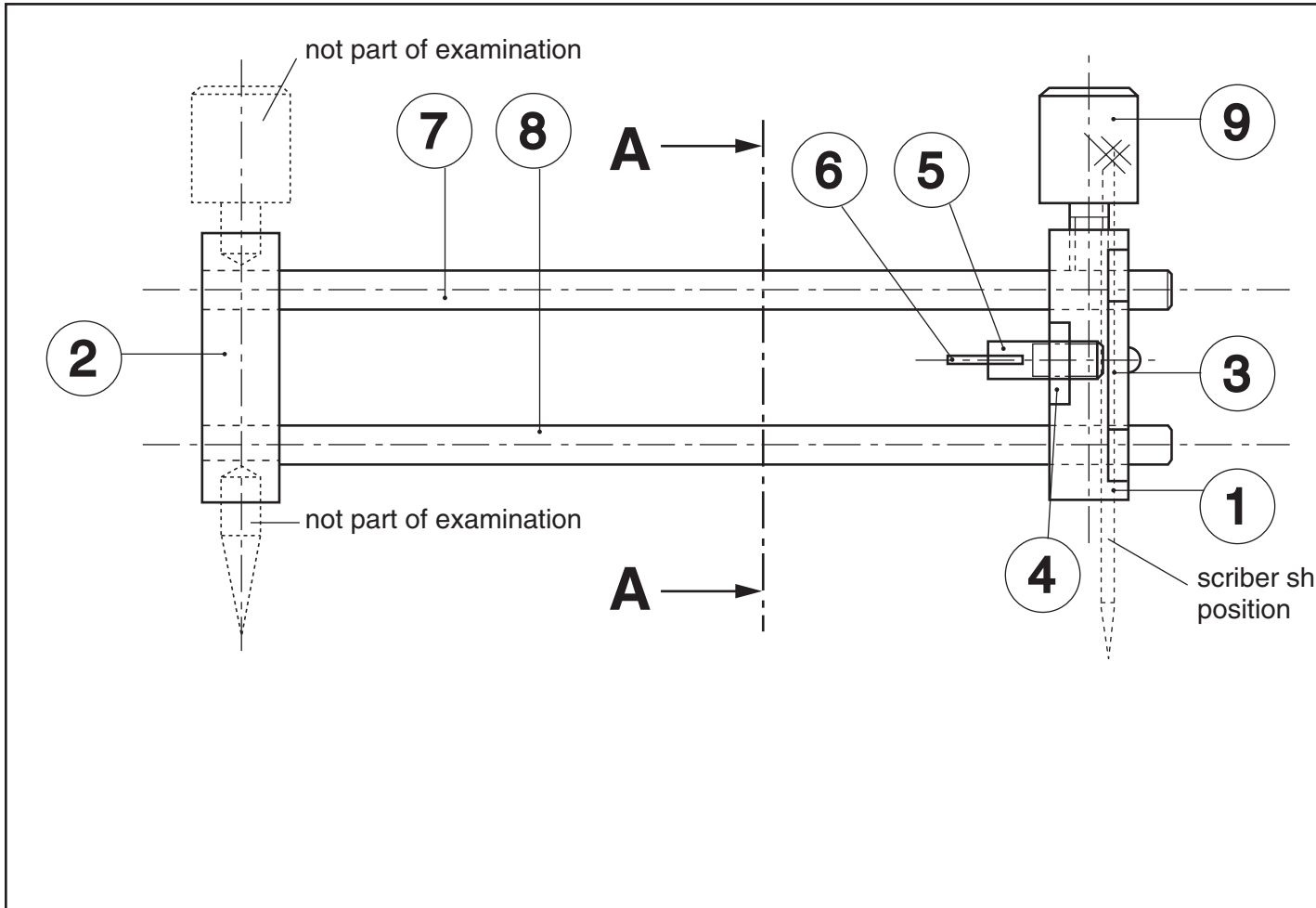
Notes

Working Procedures

- A Part 3 and Part 4 are riveted to Part 1.
- B Parts 7 and 8 are push fit on Part 2.
- C Part 6 is silver soldered to Part 5.

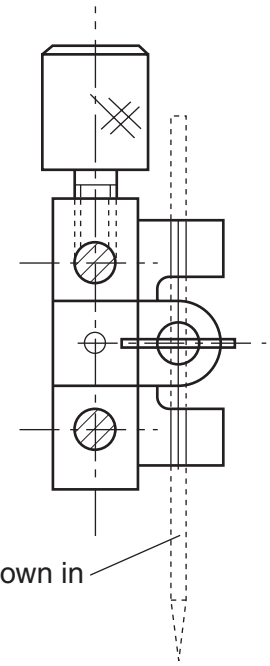
General Notes

- A second supply of material is **not** allowed. If you make a mistake do your best to work as near to the dimensions given in the drawing as possible.
- Any dimensions omitted are left to your discretion.
- Attempt to complete all the work but remember that a partly completed piece of work of good quality may gain more marks than one which is complete but inaccurate or poorly finished.
- Clean up all parts by draw filing. Emery cloth or similar must **not** be used.
- Write your **name and examination number** on the labels supplied, attach **one** to your work and **the other** to the bag in which your work is enclosed. Put into the bag all worked and unworked materials, with the exception of waste.

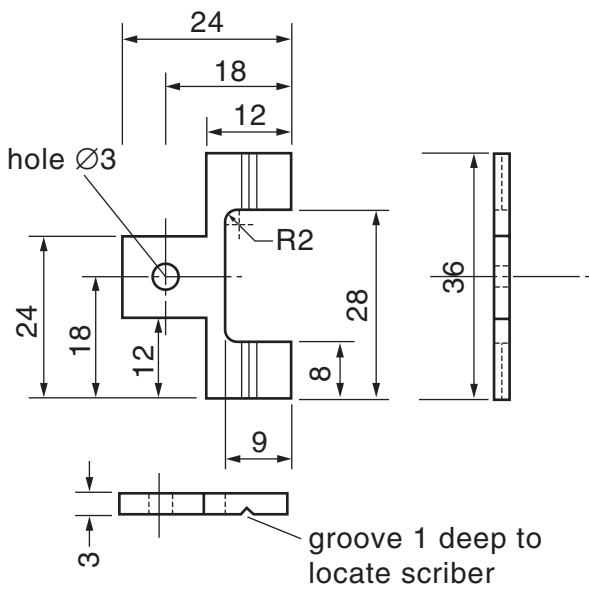
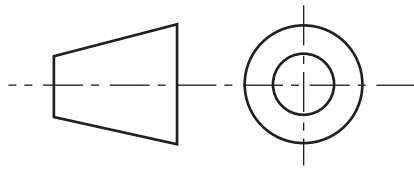


BEAM COMPASS

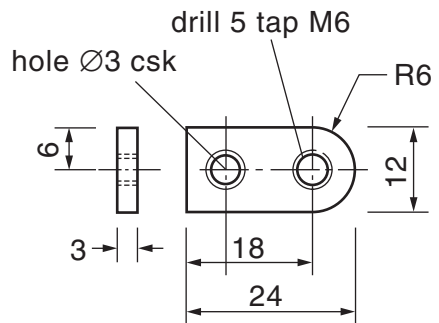
Dimensions in millimetres



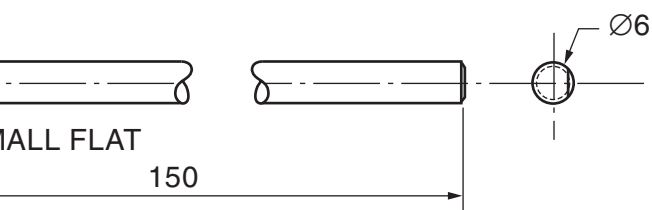
Section on AA



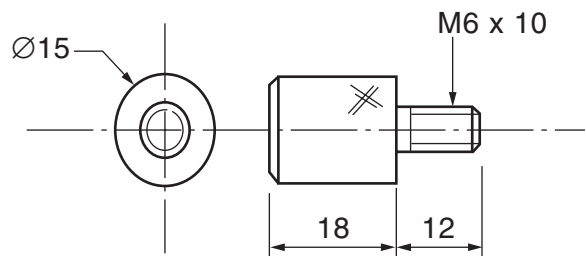
PART 3



PART 4



and 8



PART 9 (SUPPLIED)

BLANK PAGE

FOLD OUT THIS PAGE

