

UNIVERSITY OF CAMBRIDGE LOCAL EXAMINATIONS SYNDICATE

**Joint Examination for the School Certificate
and General Certificate of Education Ordinary Level**

METALWORK

6040/2

PAPER 2 Practical Test

OCTOBER/NOVEMBER SESSION 2001

3 hours

Additional materials:

As listed in Instructions to Supervisors

TIME 3 hours

INSTRUCTIONS TO CANDIDATES

Please see page 2.

INFORMATION FOR CANDIDATES

All dimensions are in millimetres unless stated otherwise.

This question paper consists of 4 printed pages and 2 blank pages.

From the materials supplied, you are to make the ADJUSTABLE SPANNER shown in the drawing.

All dimensions are in millimetres.

The following material is supplied:

- PART 1 One piece mild steel sheet 70 x 25 x 0.8 (22 ISWG) or 1 (20 ISWG). Ends and edges squared.
- PART 2 One piece mild steel sheet 70 x 25 x 0.8 (22 ISWG) or 1 (20 ISWG). Ends and edges squared.
- PART 3 One piece bright drawn mild steel 30 x 10 x 40 long. Both ends squared.
- PART 4 One piece bright drawn mild steel 20 x 10 x 70 long (prepared prior to the examination)
- PART 5 One piece bright drawn mild steel 15 diameter x 16 long. Both ends faced.
- PART 6 One piece bright drawn mild steel 6 diameter x 58 long. Both ends faced and lightly chamfered.

Two x 3 diameter x 20 long snap head steel rivets.

One bag in which to enclose work.

Two tie-on labels.

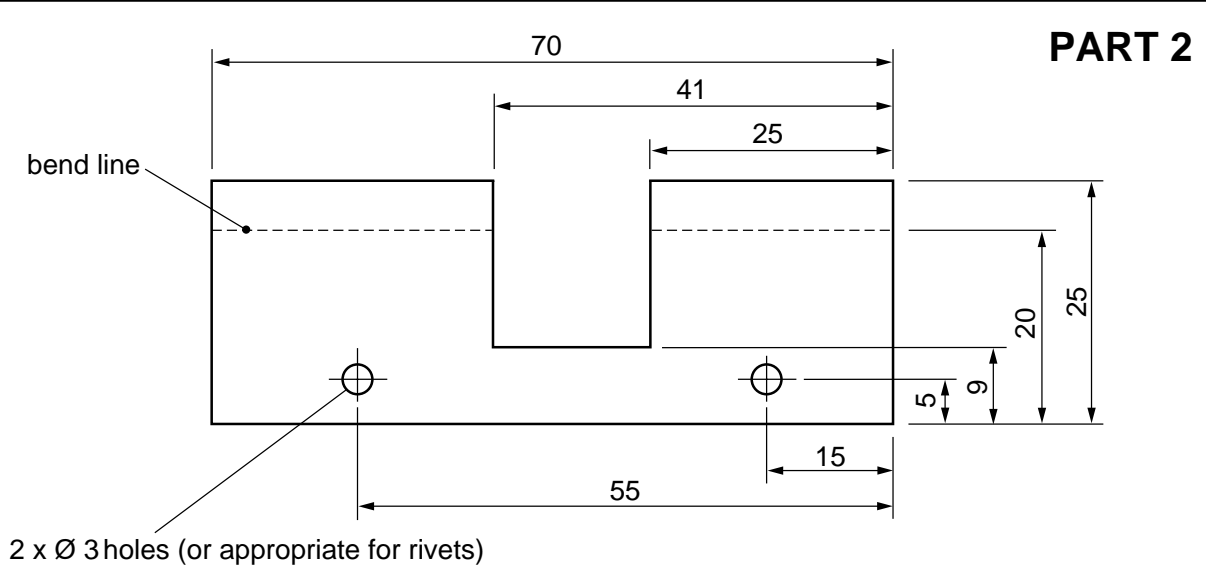
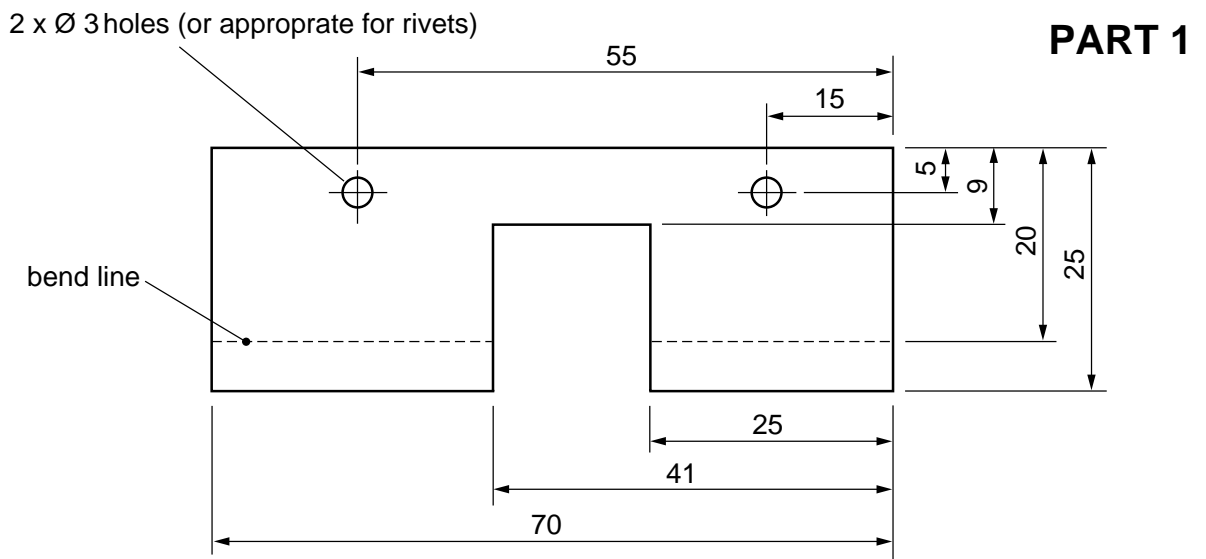
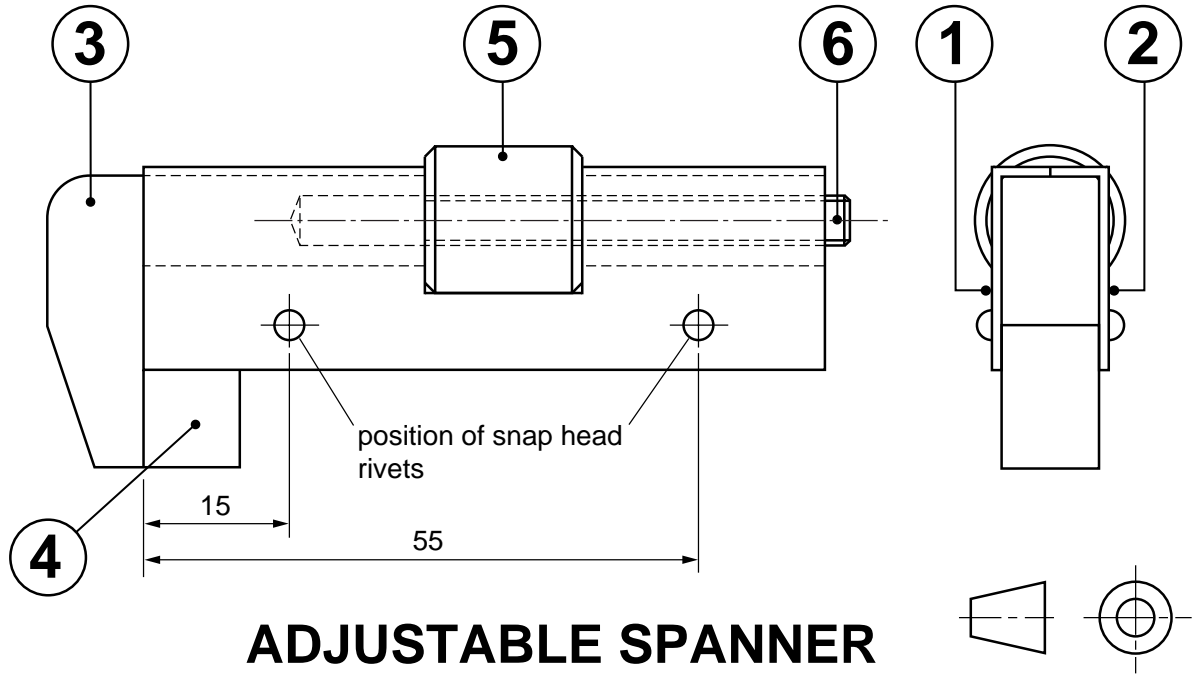
Notes

Working procedures

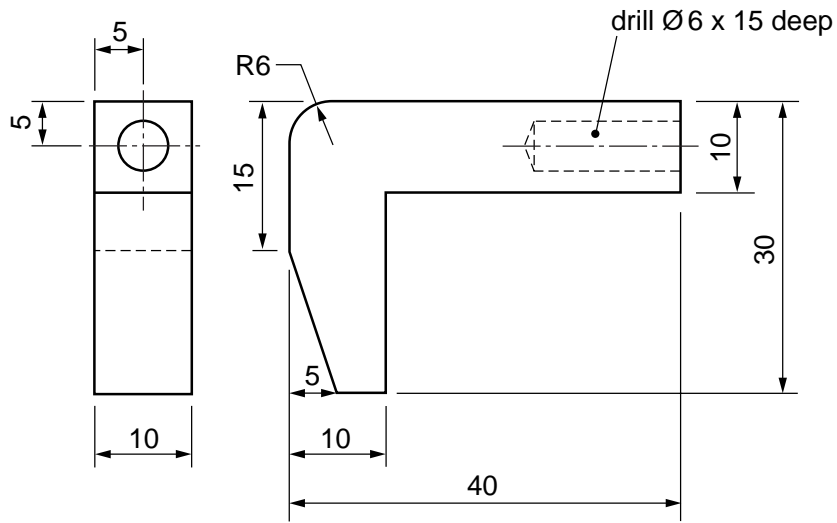
- A Parts 1 and 2 Shape and drill before bending using former supplied.
- B Cut thread on Part 6 before soft soldering to Part 3.
- C Parts 1 and 2 to be riveted to Part 4.

General Notes

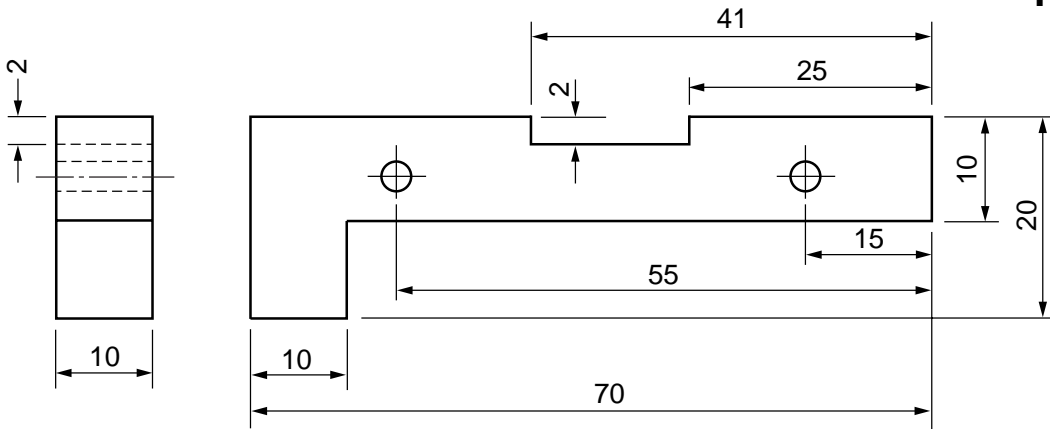
- A second supply of material is **not** allowed. If you make a mistake do your best to work as near to the dimensions given in the drawing as possible.
- Any dimensions omitted are left to your discretion.
- Attempt to complete all the work but remember that a partly completed piece of work of good quality may gain more marks than one which is complete but inaccurate or poorly finished.
- Clean up all parts by draw filing. Emery cloth or similar must **not** be used.
- Write your **name and examination number** on the labels supplied, attach **one** to your work and **the other** to the bag in which your work is enclosed. Put into the bag all worked and unworked materials, with the exception of waste.



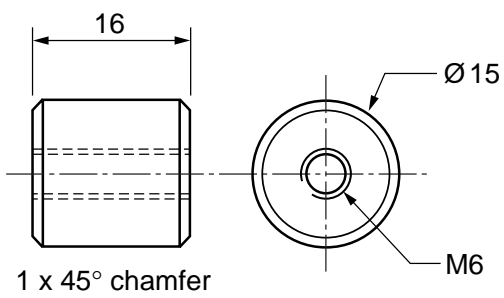
PART 3



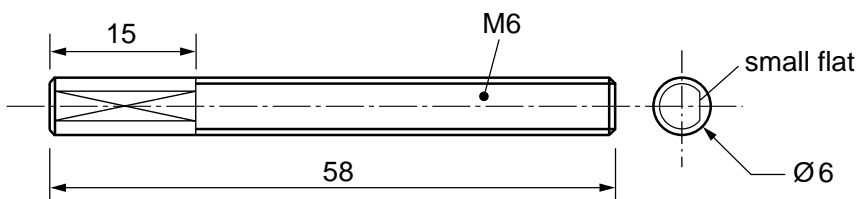
PART 4



PART 5



PART 6



BLANK PAGE

FOLD OUT THIS PAGE

