

UNIVERSITY OF CAMBRIDGE INTERNATIONAL EXAMINATIONS
General Certificate of Education Ordinary Level

GEOMETRICAL AND MECHANICAL DRAWING

7040/02

Paper 2

October/November 2006

INSERT

2 hours 40 minutes

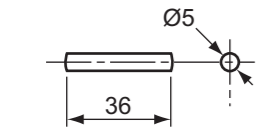
This insert contains Fig. 2 for Section 2.

This document consists of **3** printed pages and **1** blank page.

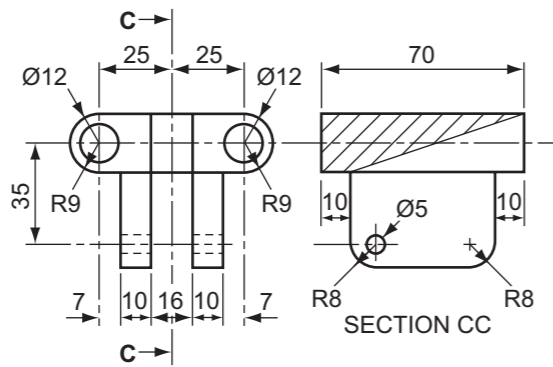


2

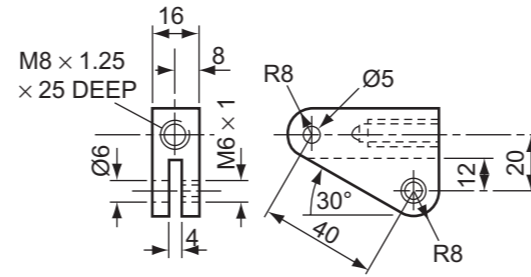
3



8 PIVOT PIN



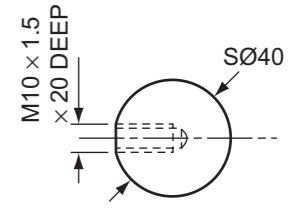
2 CARRIAGE



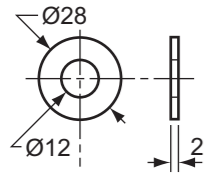
3 CUTTER BLOCK



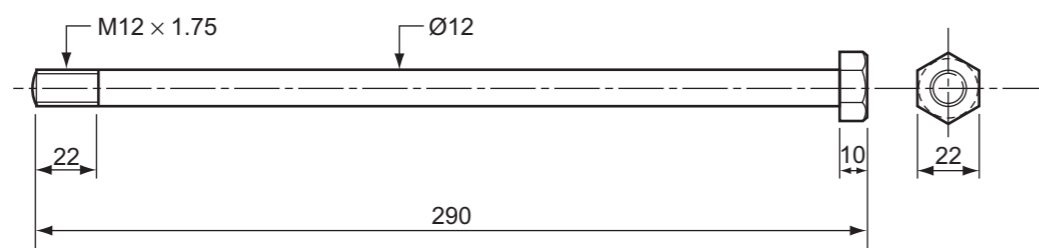
6 ARM



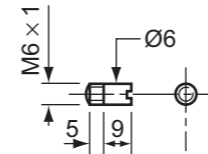
7 HANDLE



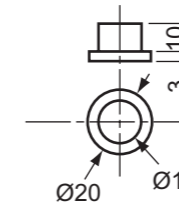
11 PLAIN WASHER [2 OFF]



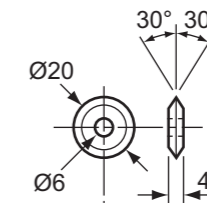
10 SLIDER BOLT [2 OFF]



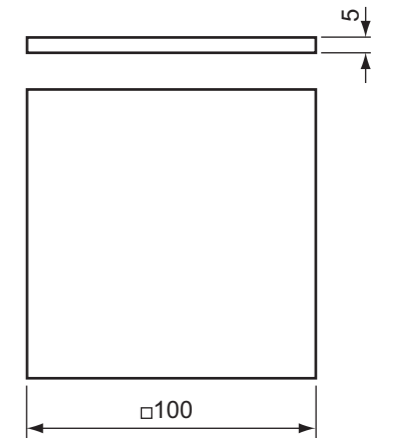
9 THREADED SPINDLE



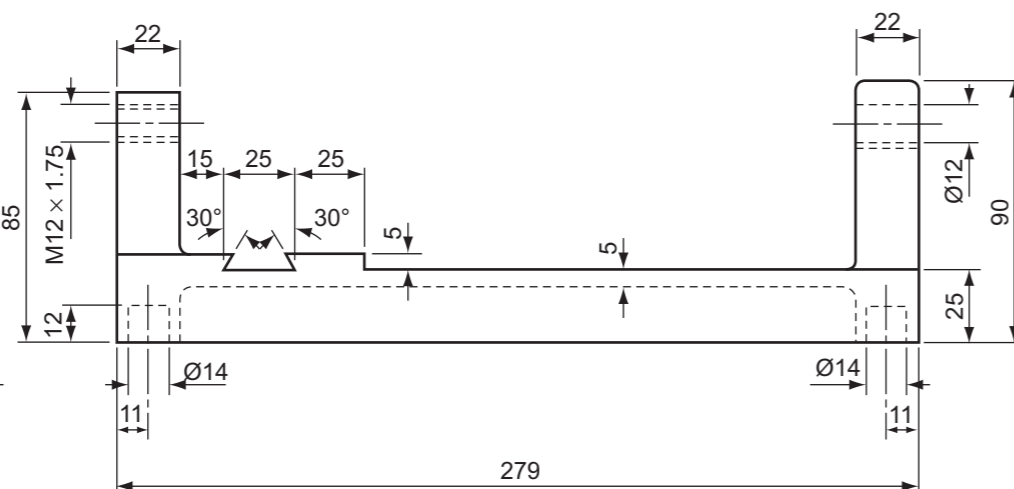
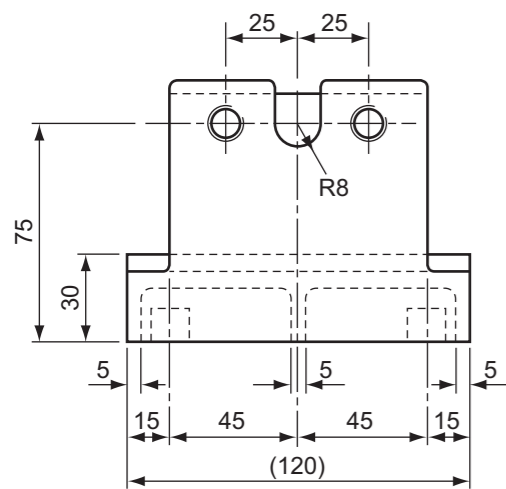
5 FOOT [4 OFF]



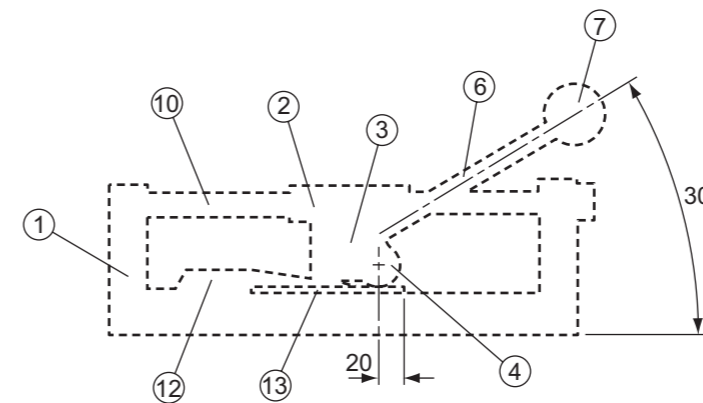
4 SCORING DISC



13 TILE



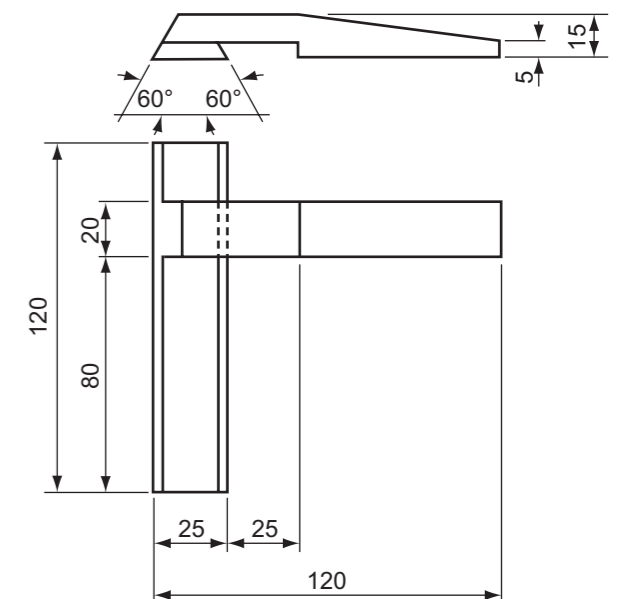
1 BODY



SCHEMATIC OUTLINE OF ASSEMBLED TILE CUTTER

ALL DIMENSIONS ARE IN MILLIMETRES

UNSPECIFIED FILLETS AND RADII 5



[SETTING SCALE NOT SHOWN]

12 ADJUSTABLE GUIDE

Fig. 2

BLANK PAGE

Permission to reproduce items where third-party owned material protected by copyright is included has been sought and cleared where possible. Every reasonable effort has been made by the publisher (UCLES) to trace copyright holders, but if any items requiring clearance have unwittingly been included, the publisher will be pleased to make amends at the earliest possible opportunity.

University of Cambridge International Examinations is part of the University of Cambridge Local Examinations Syndicate (UCLES), which is itself a department of the University of Cambridge.