

**BLANK PAGE**

CAMBRIDGE INTERNATIONAL EXAMINATIONS  
General Certificate of Education Ordinary Level

**GEOMETRICAL AND MECHANICAL DRAWING 7040/02**

Paper 2

October/November 2003

**2 hours 40 minutes**

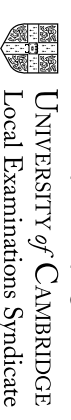
INSERT

**READ THESE INSTRUCTIONS FIRST**

This insert contains Fig. 2 for Section 2.

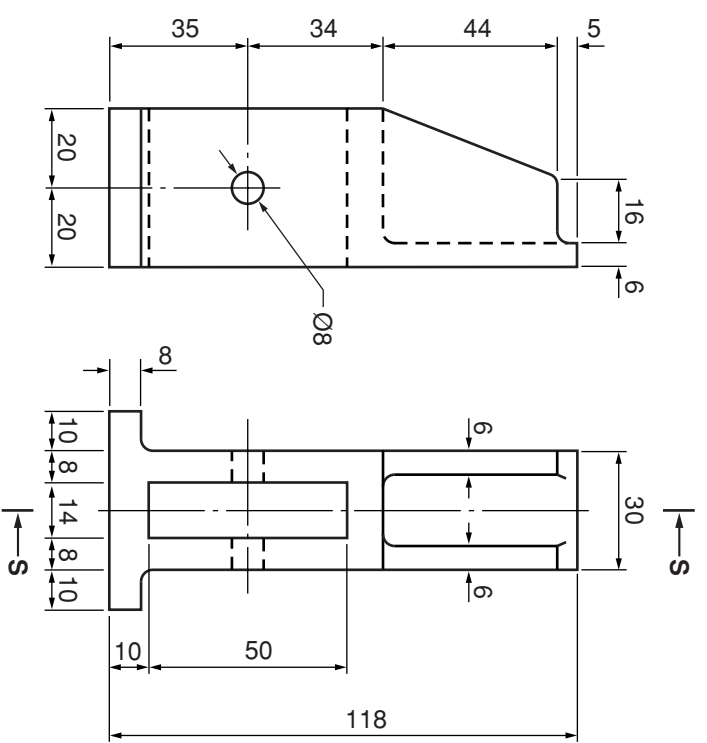
This insert consists of **3** printed pages and **1** blank page.

SP (ATTC) S39099/2  
© CIE 2003

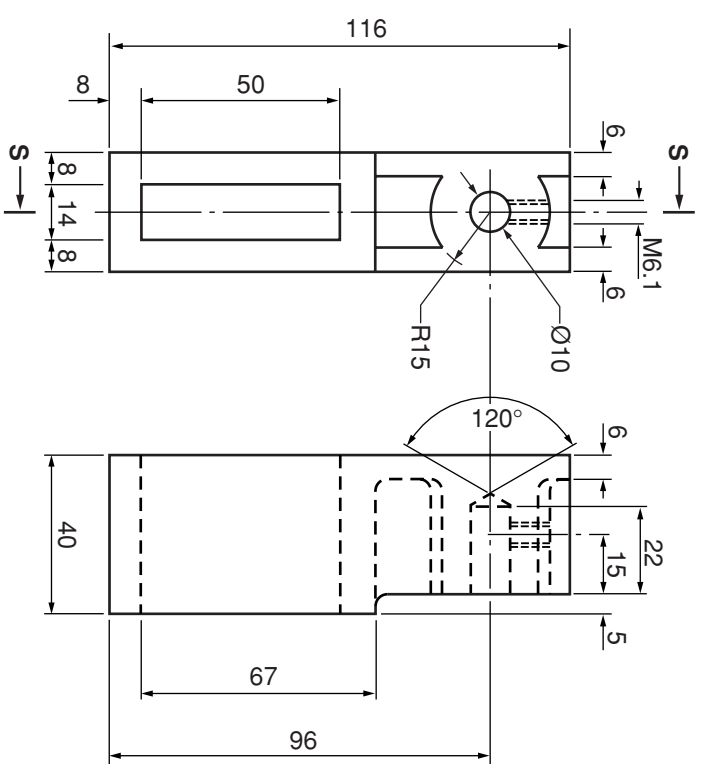


UNIVERSITY of CAMBRIDGE  
Local Examinations Syndicate

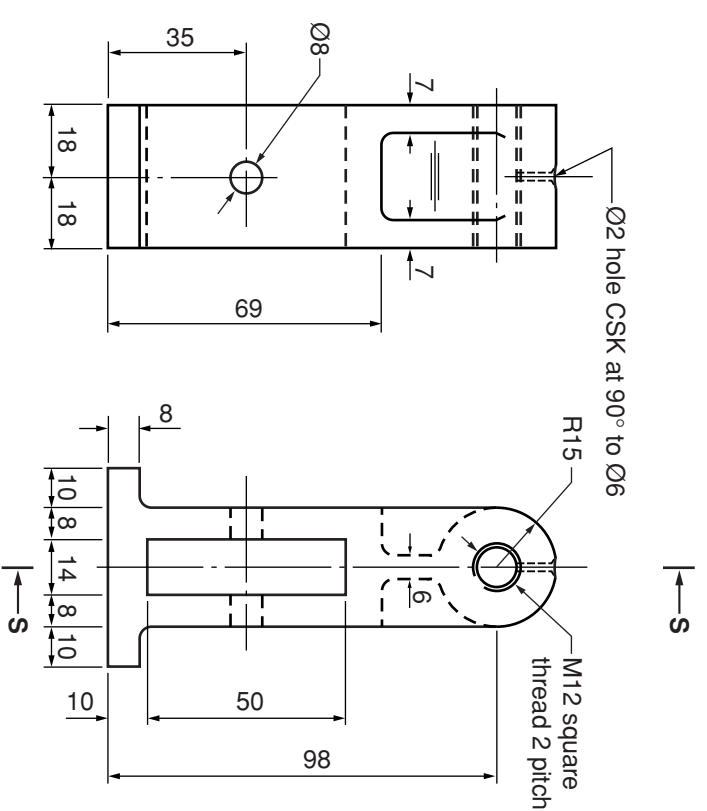
**[Turn over**



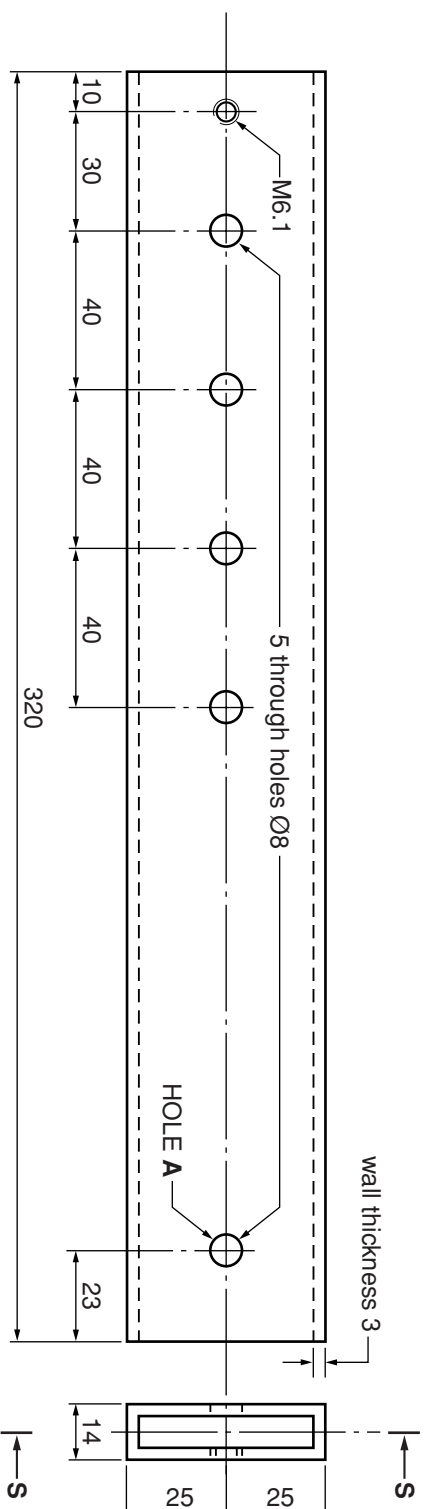
3 ADJUSTABLE JAW



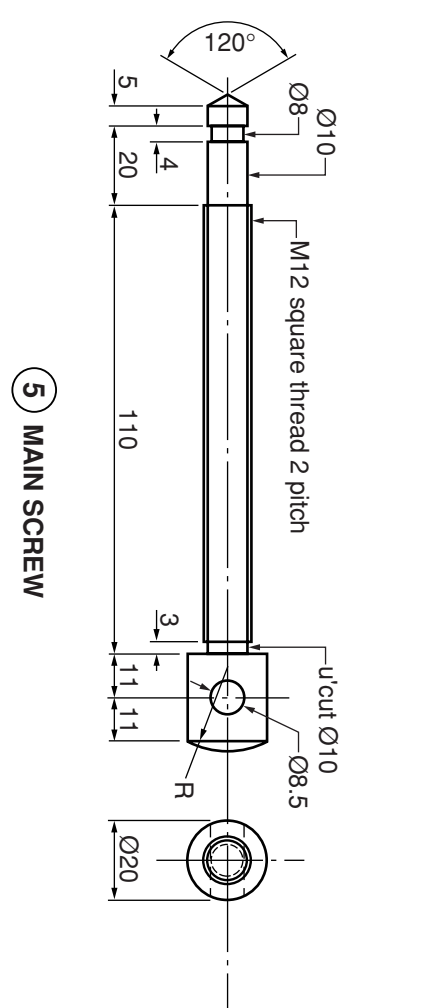
2 SLIDING JAW



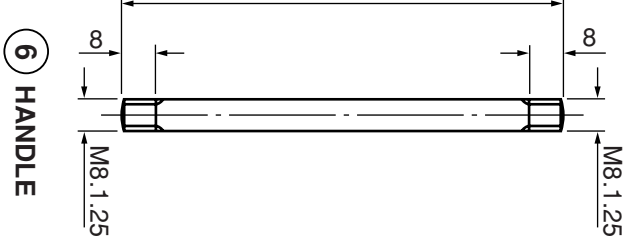
1 HEAD



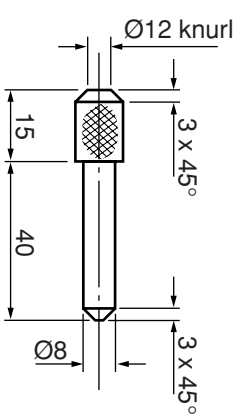
4 GUIDE



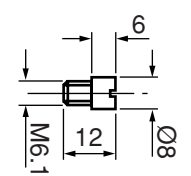
5 MAIN SCREW



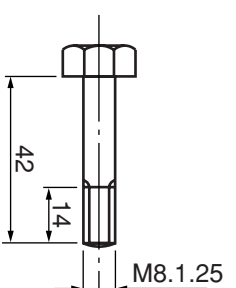
6 HANDLE



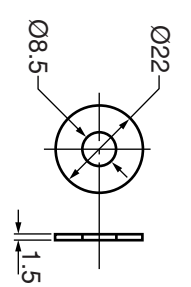
8 RETAINING PIN



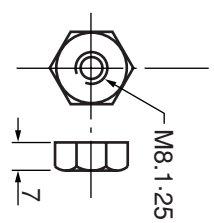
9 STOP



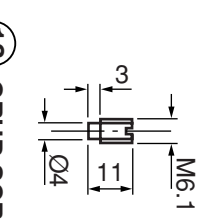
10 M8 BOLT



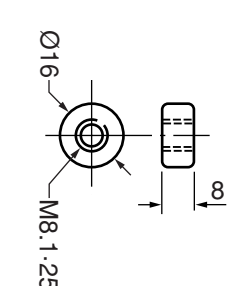
11 WASHER



12 M8 NUT



13 GRUB SCREW



7 CAP (2 OFF)

UNSPECIFIED FILLETS AND RADII 3

Fig. 2

ALL DIMENSIONS ARE IN MILLIMETRES