



Answer FOUR questions only.

If you answer Question 1 put a cross in this box  .

1. (a) Study Figure 1 which shows the area around the epicentre of a recent earthquake in Japan.

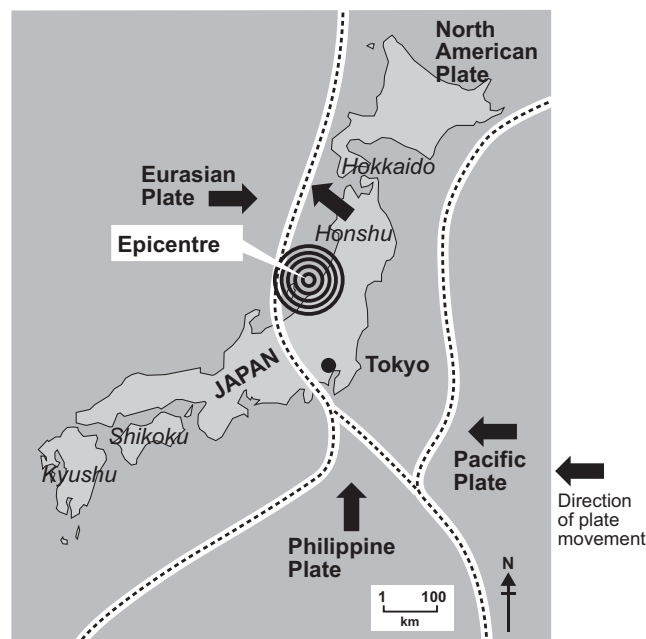


Figure 1

- (i) How many tectonic plates meet close to Japan?

..... (1)

- (ii) State how the Eurasian and Philippine plates differ in their direction of movement.

..... (1)

- (iii) State what is meant by the terms:

1. tectonic plate

.....  
.....

2. epicentre.

.....  
.....

(4)



Leave  
blank

(iv) What happens at the boundary between the Eurasian and North American plates to cause an earthquake?

.....  
.....  
.....  
.....  
.....  
.....  
.....  
.....

(4)

(b) Explain why earthquakes are likely to cause most damage in:

1. urban areas

.....  
.....  
.....  
.....  
.....  
.....

2. low-income countries (LICs).

.....  
.....  
.....  
.....  
.....  
.....

(6)





**BLANK PAGE**



If you answer Question 2 put a cross in this box ☒ .

2. (a) Study Figure 2 which shows the River Rhône.

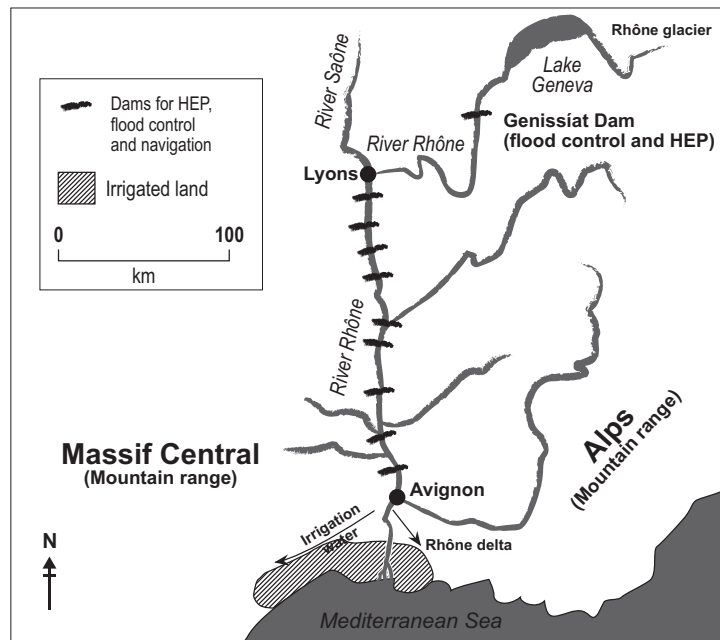


Figure 2

(i) Where is the source of the Rhône? Put a cross (☒) in the correct box.

- Lyons ☒
- Rhône delta ☒
- Rhône glacier ☒

(1)

(ii) Suggest why the Rhône is naturally liable to flooding.

.....

.....

.....

.....

.....

.....

(3)



Leave  
blank

(iii) The Rhône is managed for a number of purposes including flood control. State **two** other purposes.

1 .....

.....

2 .....

.....

**(2)**

(iv) Explain how dams help the management of a river.

.....

.....

.....

.....

.....

.....

.....

.....

**(4)**



Leave  
blank

(b) Describe the ways in which rivers are misused by people.

.....

.....

.....

.....

.....

.....

.....

.....

.....

.....

.....

.....

.....

.....

.....

.....

(6)







If you answer Question 3 put a cross in this box  .

3. (a) Study Figure 3 which shows a coastal area made up of different rock types.

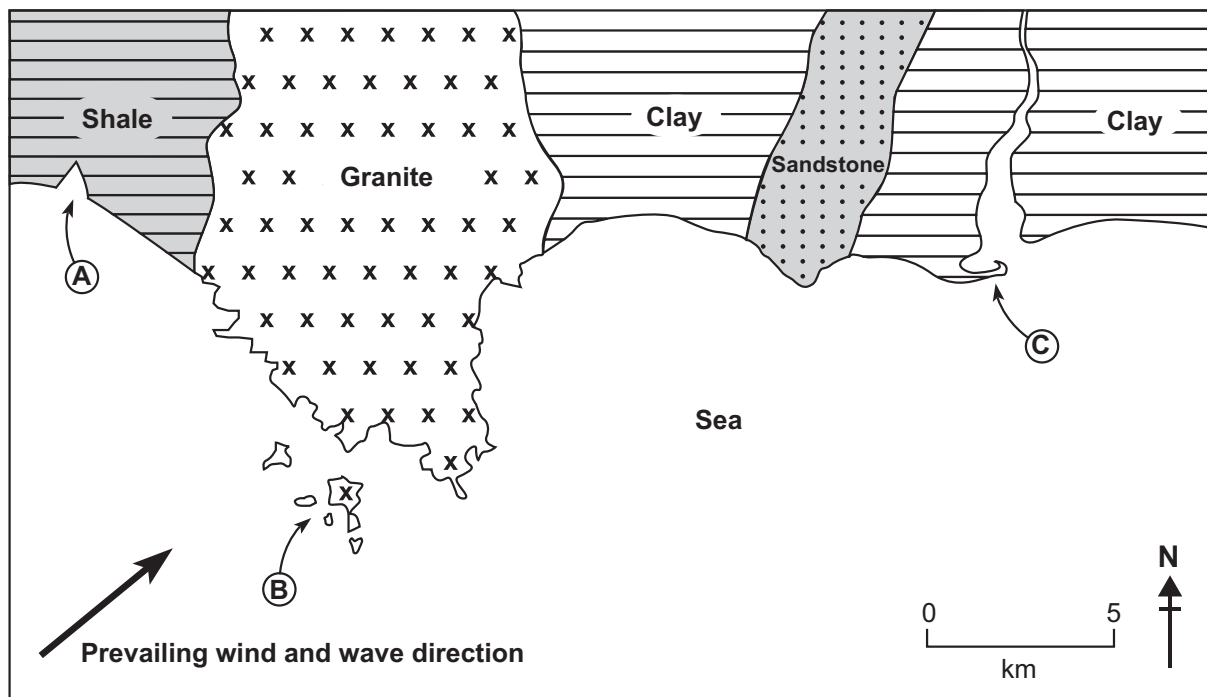


Figure 3

(i) Name the features at **A**, **B** and **C**, choosing from the list below.

- |     |     |       |          |      |       |
|-----|-----|-------|----------|------|-------|
| Bar | Bay | Cliff | Headland | Spit | Stack |
|-----|-----|-------|----------|------|-------|

**A** .....

**B** .....

**C** .....

(3)

(ii) Clay is the softest of the rock types shown in Figure 3. How does this help to explain the shape of the coastline?

.....  
.....  
.....  
.....

(2)



Leave  
blank

(iii) Suggest why the western side of the granite headland differs from the eastern side.

.....  
.....  
.....  
.....

(2)

(iv) Explain how feature C was formed.

.....  
.....  
.....  
.....  
.....  
.....

(3)







If you answer Question 4 put a cross in this box  .

4. (a) Study Figure 4 which shows the profile of a chernozem soil.

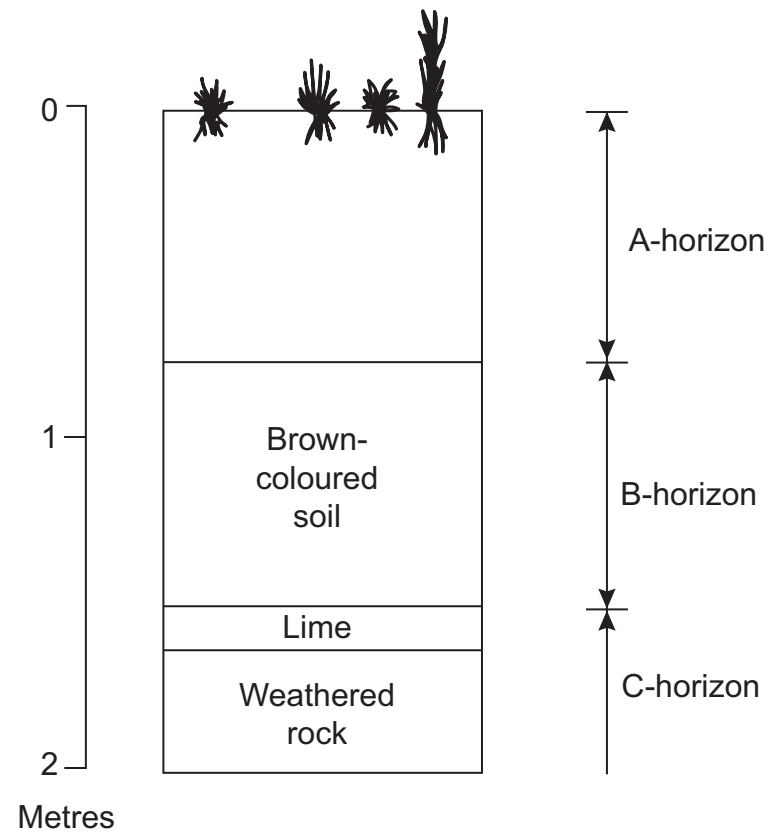


Figure 4

(i) What term is used to describe the main layers in a soil profile?

..... (1)

(ii) State the depth of the soil.

..... (1)

(iii) What is the typical colour of the A-horizon of a chernozem soil?

..... (1)



Leave  
blank

(iv) What makes it that colour?

.....

.....

.....

.....

.....

.....

**(3)**

(v) Describe the natural vegetation associated with chernozem soils.

.....

.....

.....

.....

.....

.....

.....

.....

.....

**(4)**



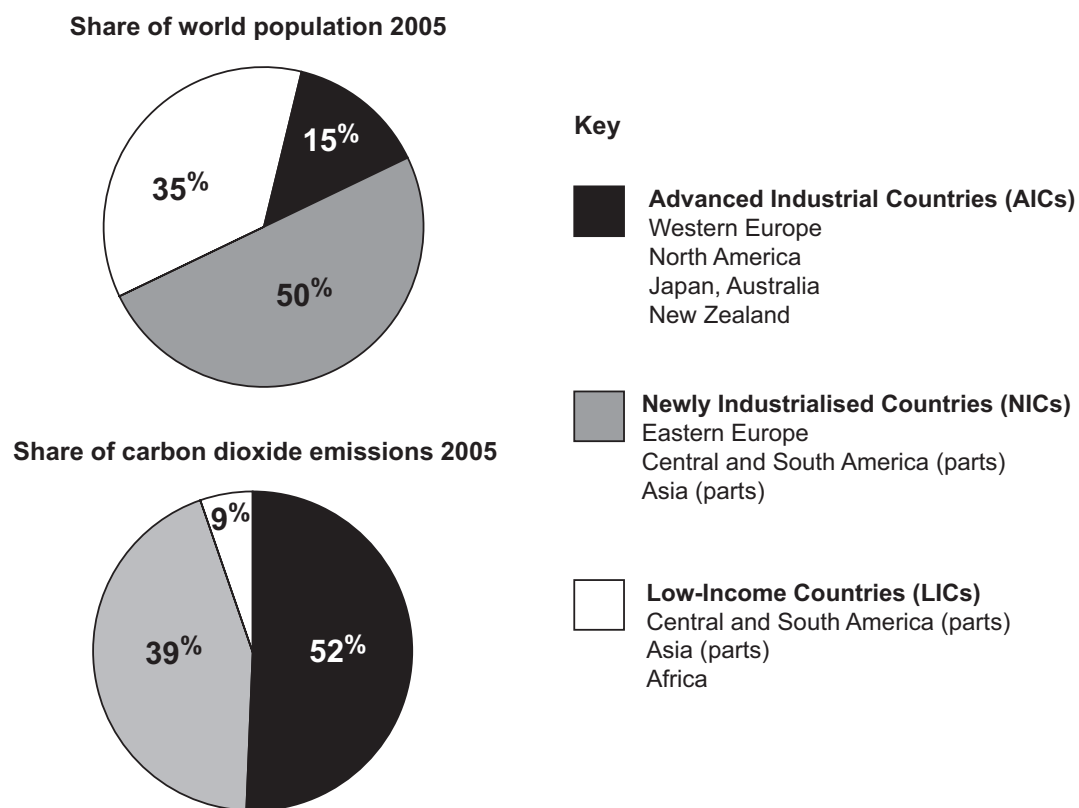






If you answer Question 5 put a cross in this box  .

5. (a) Study Figure 5 which shows three different economic groupings and their shares of world population and carbon dioxide emissions in 2005.



**Figure 5**

- (i) Complete the following passage:

AICs contain 15% of the world's population but are responsible for ..... % of the world's carbon dioxide emissions. .... % of the world's population live in LICs which are responsible for ..... % of the world's carbon dioxide emissions.

**(3)**

- (ii) Give **two** reasons for the difference between AICs and LICs in their carbon dioxide emissions.

1 .....

.....

2 .....

.....

**(4)**



Leave  
blank

(iii) Suggest how the shares of carbon dioxide emissions shown in Figure 5 might change in the future.

.....  
.....  
.....  
.....  
.....  
.....

(3)

(b) (i) What is the **greenhouse effect**?

.....  
.....  
.....  
.....

(2)

(ii) Explain how a strengthening greenhouse effect is causing climate change.

.....  
.....  
.....  
.....  
.....  
.....  
.....  
.....  
.....

(4)





If you answer Question 6 put a cross in this box  .

6. (a) Study Figure 6 which shows the daily maximum temperatures recorded at Poitiers (France) between 27 July and 15 August 2003.

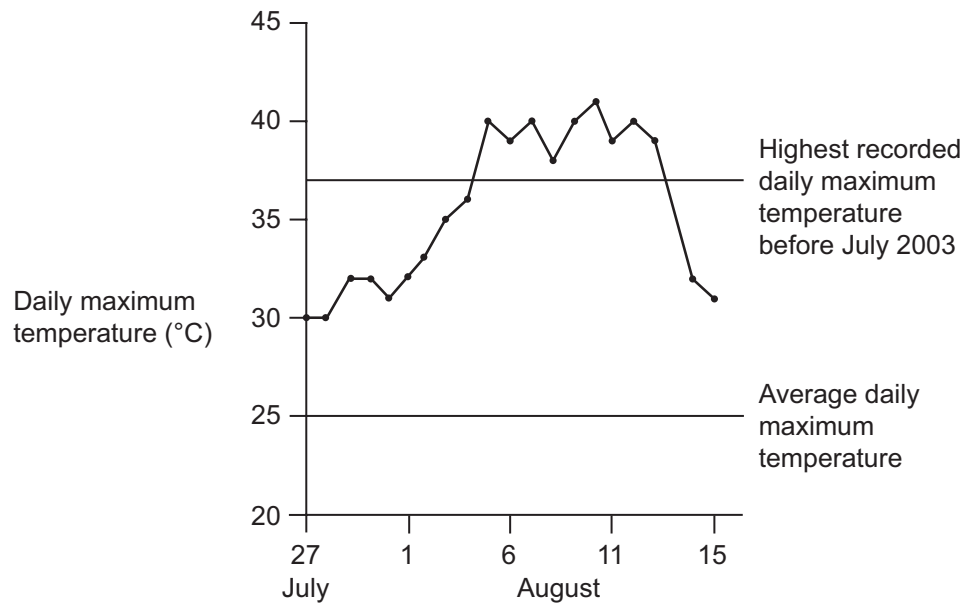


Figure 6

- (i) At what time of day is the maximum temperature likely to occur?

..... (1)

- (ii) The period between 3 and 13 August was described as a 'remarkable heatwave'.

Give **three** pieces of evidence from Figure 6 to support this description.

1 .....

.....

.....

2 .....

.....

.....

3 .....

.....

..... (6)



(iii) A blocking anticyclone over western Europe was the cause of this weather.

What is a blocking anticyclone? A diagram may help your answer.

Leave  
blank

.....

.....

.....

.....

.....

.....

(3)





Leave  
blank

(b) Suggest why the weather of summer anticyclones differs from that of winter anticyclones.

.....

.....

.....

.....

.....

.....

.....

.....

.....

.....

.....

.....

.....

.....

.....

.....

.....

.....

.....

.....

.....

.....

(6)



N 3 3 4 3 6 A 0 2 3 3 2







If you answer Question 7 put a cross in this box ☒ .

7. (a) Study Figure 7 which shows three different types of mountain.

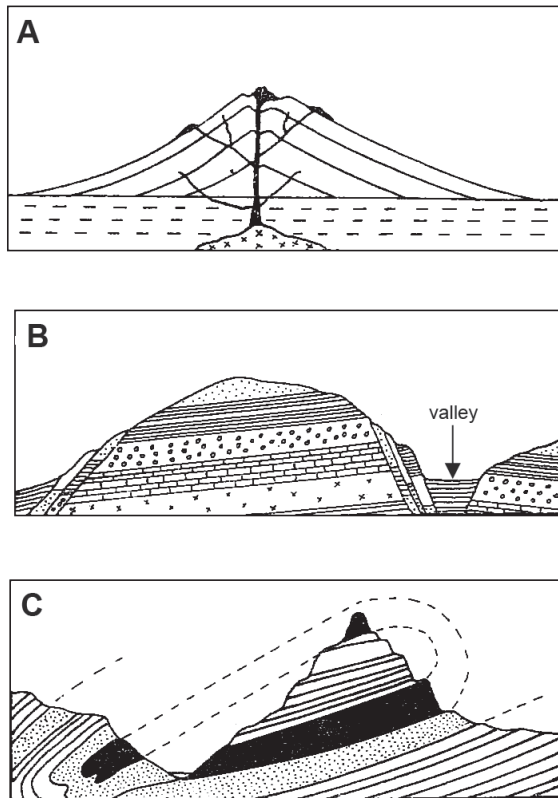


Figure 7

(i) Name the process responsible for each of the three types of mountain.

A .....

B .....

C .....

(3)

(ii) Name an example of **one** of these three types of mountain.

Mountain type .....

Example

.....

(1)

(iii) Name the type of valley shown in B.

.....

(1)



Leave blank

(iv) What do the dotted lines in C represent?

.....  
.....  
.....  
.....

(2)

(v) Suggest why mountain types A and C often occur together.

.....  
.....  
.....  
.....  
.....  
.....

(3)

(b) Describe the opportunities that mountains offer people.

.....  
.....  
.....  
.....  
.....  
.....  
.....  
.....  
.....  
.....  
.....  
.....  
.....  
.....  
.....

(6)





If you answer Question 8 put a cross in this box ☒ .

8. (a) Study Figure 8 which is a field sketch of an arid landscape.

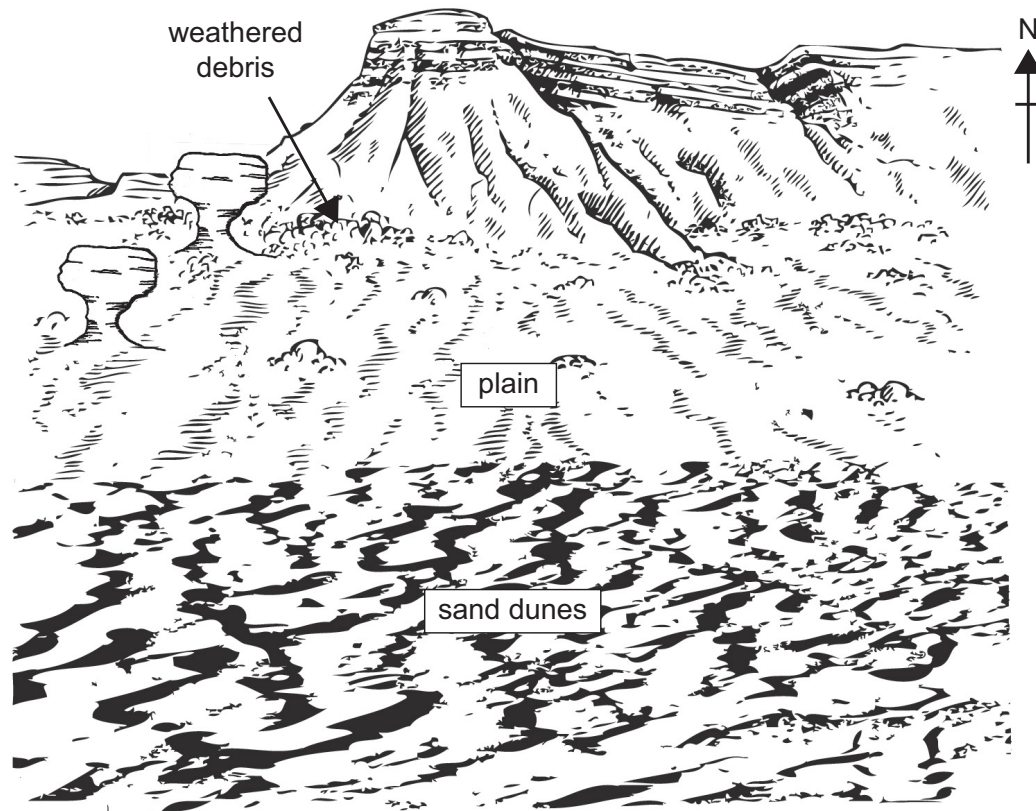


Figure 8

(i) What is meant by the term **arid**?

.....  
.....

(1)

(ii) What appears to be the prevailing (dominant) wind direction in this area?

.....

(1)



Leave  
blank

(iii) From the sketch, identify the evidence for:

1. wind deposition

.....  
.....  
.....  
.....

2. wind erosion.

.....  
.....  
.....  
.....

**(4)**

(iv) Explain the formation of **one** of the features you have identified as evidence in (iii).

Feature .....

.....  
.....  
.....  
.....  
.....  
.....  
.....  
.....

**(4)**



(b) Describe the features of some arid areas which might have been formed by water.

.....

.....

.....

.....

.....

.....

.....

.....

.....

.....

.....

.....

.....

.....

.....

.....

(6)

Leave blank





**BLANK PAGE**

