

CANDIDATE
NAME

--

CENTRE
NUMBER

--	--	--	--	--

CANDIDATE
NUMBER

--	--	--	--



FASHION AND TEXTILES

6130/01

Paper 1 Theory

October/November 2016

2 hours

Candidates answer on the Question Paper.

Additional Materials: Coloured pencils (not yellow)
 Ruler
 Small piece of fabric, needle and thread

READ THESE INSTRUCTIONS FIRST

Write your Centre number, candidate number and name on the work you hand in.

Write in dark blue or black pen.

You may use an HB pencil for any diagrams or rough working.

Do not use staples, paper clips, glue or correction fluid.

DO NOT WRITE IN ANY BARCODES.

You should illustrate your answers by means of clear, bold diagrams wherever necessary.

You may use a needle and thread and a small piece of fabric to help in making drawings of stitches.

This fabric should **not** be handed in with your work.

Section A

Answer **all** parts of Question 1.

You are advised to spend no longer than 40 minutes on Section A.

Section B

Answer any **three** questions.

The number of marks is given in brackets [] at the end of each question or part question.

This document consists of **20** printed pages.

Section A

Answer **all** questions in this section.

1 Fig. 1 is a drawing of a child's dress.

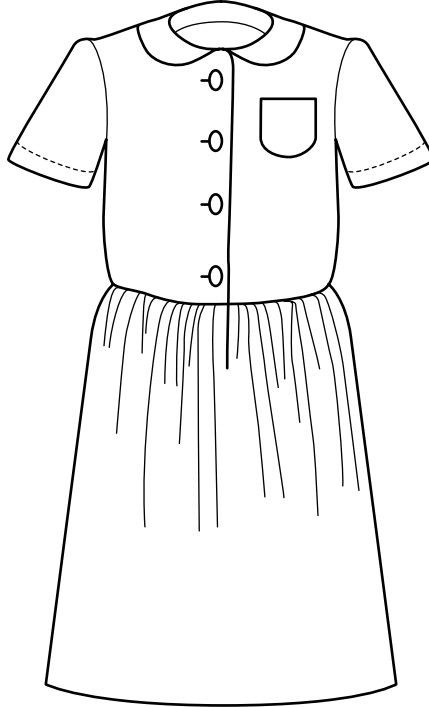


Fig. 1

(a) (i) Cotton seersucker fabric is suggested for the child's dress in Fig. 1.

Describe the appearance of cotton seersucker fabric and give **one** reason why this fabric is suitable for this style of child's dress.

Description

.....

.....

.....[2]

Reason

.....[1]

(ii) Explain **two** performance characteristics of cotton seersucker fabric that make it suitable for a child's dress.

1

.....

2

.....

[2]

(iii) In the space below, draw the correct care symbol for ironing cotton seersucker fabric.

[2]

(iv) Name **one** different fabric made from cotton/polyester which could be used instead of cotton seersucker for the child's dress in Fig. 1. Give **one** reason for your choice.

Name of fabric[1]

Reason for choice

.....[1]

(b) (i) The child's dress in Fig. 1 is gathered at the waistline.

Give **two** reasons why this gathering is needed.

1

.....

2

.....

[2]

- (ii) Using notes and labelled diagrams, explain how to shorten, by 2 cm, the sleeve pattern for the child's dress in Fig. 1.

[4]

- (iii) Fig. 2 below shows the pattern piece for the bodice front of the child's dress in Fig. 1.

Draw on Fig. 2 the pattern symbols for: the grain line, a button, a buttonhole and a seam allowance.

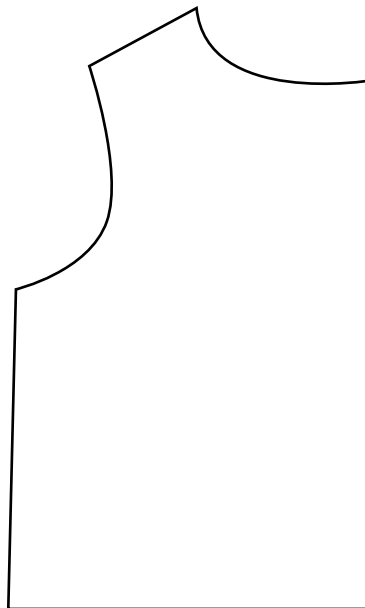


Fig. 2

[5]

(iv) State **two** reasons to explain why buttons and buttonholes have been used as a fastening on the front of the child's dress in Fig. 1.

1

.....

2

.....

[2]

(v) Suggest an alternative fastening which could be used in the same position on the child's dress in Fig. 1.

.....

.....[1]

(vi) Explain how to work tailor tacking to transfer a buttonhole marking from the pattern to the fabric. You may use notes and labelled diagrams to support your answer.

.....

.....

.....

.....

.....

.....

.....

.....

[4]

(c) (i) A patch pocket has been stitched on the bodice front of the child's dress in Fig. 1.

Suggest **two** methods to finish the top edge of the pocket.

1

.....

2

.....

[2]

(ii) Suggest an alternative type of pocket which could be used on the child's dress in Fig. 1. Explain where you would position the pocket on the dress and give **one** reason for your choice. You may use notes and labelled diagrams to support your answer.

Name of pocket

Position on child's dress

Reason for choice of position

.....

.....

.....

[4]

(iii) CAD could be used to modify the patch pocket design.

What is meant by CAD?

.....

.....[1]

(iv) Suggest **three** benefits of using CAD to modify the patch pocket design.

- 1
-
- 2
-
- 3
-

[3]

(d) State **three** ways in which consumers can recycle unwanted textiles products.

-
-
-
-
-
-
-
-
-
-

[3]

[Total: 40]

Section B

Answer any **three** questions from this section.

2 Many different fibres are used to make fabrics.

(a) Cotton is sometimes blended with other fibres before being used to make fabrics.

(i) What is meant by **blending** fibres?

.....
.....[1]

(ii) Name **one** natural fibre, **one** regenerated fibre and **one** synthetic fibre that can be blended with cotton fibres.

Natural fibre
Regenerated fibre
Synthetic fibre [3]

(iii) Give **two** reasons why synthetic fibres might be blended with cotton.

.....
.....
.....
.....[2]

(b) Name **two** chemical finishes which could be used on synthetic fabrics and explain how they improve the performance characteristics of the fabric.

Finish 1
Improvement to fabric
.....
.....
.....
Finish 2
Improvement to fabric
.....
.....
.....

[6]

(c) State **four** benefits of using organic cotton fabrics and explain how they may influence consumer choice when purchasing fabrics and clothing.

1

.....

.....

.....

2

.....

.....

.....

3

.....

.....

.....

4

.....

.....

.....

[8]

[Total: 20]

3 Refer to the child's dress in Fig. 1 in Section A.

(a) (i) Name the style of the collar on the child's dress in Fig. 1.

.....[1]

(ii) Describe **one** suitable interfacing which could be used for the collar on the child's dress, shown in Fig. 1.

Give **two** reasons for your choice of interfacing.

Interfacing

Reason 1

.....

Reason 2

.....

[3]

(iii) Explain how to apply interfacing to the collar on the child's dress in Fig. 1. You may use notes and labelled diagrams to support your answer.

.....
.....
.....
.....
.....
.....
.....
.....
.....
.....

[4]

- (iv) Using notes and labelled diagrams, explain how to make the interfaced collar before sewing it to the child's dress in Fig. 1.

[6]

4 Fashion accessories, such as bags, are popular and useful for teenagers.

(a) (i) Draw and label a sketch of a fashionable school bag. Your design should include a quilted panel.

[4]

(ii) Name a suitable fabric for the bag and describe how the fabric is constructed.

.....
.....
.....
.....[2]

(iii) Give **two** reasons why you have chosen the fabric in 4(a)(ii).

.....
.....
.....
.....[2]

(iv) Name **two** components used for the bag you designed in 4(a)(i).

1

2

[2]

5 Colour can be added to textile products in many different ways.

(a) (i) Name **two** stages of production at which dye can be added to textiles.

1

.....

2

.....

[2]

(ii) State **two** advantages of using natural dyes for dyeing textiles.

1

.....

2

.....

[2]

(iii) Explain **two** reasons why synthetic dyes rather than natural dyes are often used in textile production.

1

.....

.....

.....

.....

2

.....

.....

.....

[4]

(b) Batik is often used to produce patterns on fabrics.

Explain the method of producing a batik design on fabric. You may use notes and labelled diagrams to support your answer.

.....

.....

.....

.....

.....

.....

.....

.....

.....

.....

.....

.....

.....

.....

.....

.....

[6]

6 Commercial patterns are often used when making textile items.

(a) (i) State **two** reasons why a consumer would buy a commercial pattern to make an item of clothing.

1

.....

2

.....

[2]

(ii) Explain what the following terms mean when using patterns.

With nap

.....

.....

.....

Stay-stitching

.....

.....

.....

Notches

.....

.....

.....

[6]

(b) Explain how to prepare the fabric and paper pattern before cutting out a pair of shorts. You may use notes and labelled diagrams to support your answer.

.....

.....

.....

.....

.....

.....

.....

.....

.....

.....

.....

[6]

