



UNIVERSITY OF CAMBRIDGE INTERNATIONAL EXAMINATIONS
General Certificate of Education Ordinary Level

CANDIDATE
NAME

CENTRE
NUMBER

--	--	--	--	--

CANDIDATE
NUMBER

--	--	--	--



FASHION AND FABRICS

6050/01

Paper 1 Theory

October/November 2008

2 hours

Candidates answer Section A on the Question Paper.

- Additional Materials:
- Answer Booklet/Paper
 - Coloured pencils (not yellow)
 - Ruler
 - Small piece of fabric, needle and thread

READ THESE INSTRUCTIONS FIRST

Write your Centre number, candidate number and name on all the work you hand in.

Write in dark blue or black pen.

You may use a soft pencil for any diagrams, graphs or rough working.

Do not use staples, paper clips, highlighters, glue or correction fluid.

DO NOT WRITE IN ANY BARCODES.

The Insert is for use with Questions 1, 5, 6 and 7.

You should illustrate your answers by means of clear, bold diagrams wherever possible.

You may use a needle and thread and a small piece of fabric to help in making drawings of stitches.

This fabric should **not** be handed in with your work.

Section A

Answer **all** parts of Question 1 in the spaces provided on the Question Paper.

You are advised to spend no longer than 40 minutes on Section A.

Section B

Answer any **three** questions.

Write your answers on the separate Answer Booklet/Paper provided.

Enter the numbers of the Section B questions you have answered in the grid below.

At the end of the examination, fasten all your work securely together.

The number of marks is given in brackets [] at the end of each question or part question.

For Examiner's Use	
Section A	
Section B	/
Total	

This document consists of **9** printed pages and **3** blank pages and **1** insert.



Section A

Answer **all** questions in the spaces provided.

Refer to the Insert.

For
Examiner's
Use

1 (a) Label the style features/ items, using at least **two** words in each case.

- | | |
|---------|---------|
| A | G |
| B | H |
| C | I |
| D | J |
| E | K |
| F | L |

[12]

(b) The pattern suggests using twill or pinwale corduroy fabric to make a pair of pants/trousers, view **A**.

Complete the following details:

(i) **Fabric: twill**

- Fibre content
- Structure
- Appearance
- Feel/handle
- Weight

[5]

(ii) **Fabric: pinwale corduroy**

- Fibre content
- Structure
- Appearance
- Feel/handle
- Weight

[5]

(c) (i) State **two** reasons why the twill fabric described in (b)(i) would be suitable for a pair of pants/trousers.

.....
.....[2]

(ii) State **two different** reasons why pinwale corduroy described in (b)(ii) would be suitable for a school skirt.

.....
.....[2]

(d) (i) Complete the following details of requirements to make the pants/trousers view **A**, size 10, using the pinwale corduroy fabric described in (b)(ii).

Fabric: pinwale corduroy width: amount.....

Interfacing: type amount.....

Thread: type amount.....

Zip: type length.....

Button: made from size
[10]

(ii) State **two** reasons why 'Garment Measurements' are given on the back of the pattern envelope.

.....
.....[2]

(iii) The pattern envelope states that the amount of fabric required for the pants/trousers view **A** is '**with nap**'.

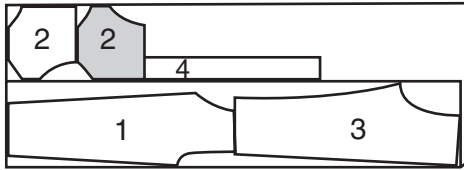
Explain the term '**with nap**'
.....[2]

(e) Study the **two** alternative layouts below, for the pants/trousers, view **A**.

For
Examiner's
Use

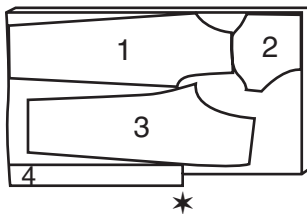
Layout A

44"/45" (115 cm) with nap



Layout B

58"/60" (150 cm) with nap



(i) On Layout A, label the **fold** and **selvedges**. [2]

(ii) On Layout A, label the pattern pieces.

- 1
- 2
- 3
- 4 [4]

(iii) Explain why **one** of pattern piece 2 in Layout A is shaded.

.....
..... [1]

(iv) On Layout B, state why pattern piece 2 is only shown once.

..... [1]

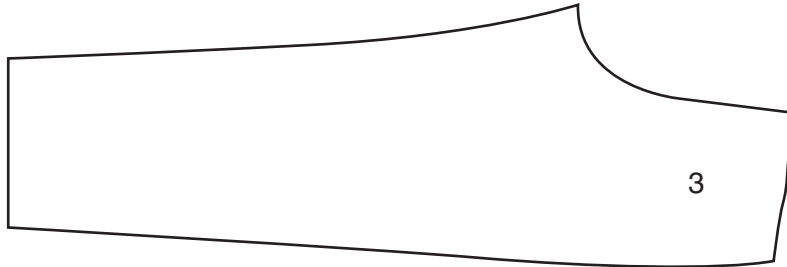
(v) On Layout B, explain the reason for the * near to pattern piece 4.

.....
..... [2]

(vi) Suggest what you could make with the left-over fabric **after** cutting out all the required pieces.

.....
.....[2]

(f) On the diagram for the pants/trousers draw and label **four** pattern markings.



[4]

(g) (i) Explain, using notes and diagrams, how to transfer pattern markings onto fabric using tailor tacking.

[4]

(ii) State **two** places where you would use tailor tacking on the pattern piece given in (f) above.

.....
.....[2]

(h) Complete the instructions for making a collar.

Use words from the list below to fill in the blank spaces in the instructions.

- | | | | |
|---------------|------------|---------|-------|
| shoulder seam | small dots | centres | Press |
| clip | facing | hemming | Trim |
| | | | 1.5cm |

(i) Pin fusible interfacing to wrong side of collar.

Machine stitch from
notched edge of collar.

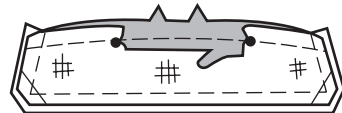


[1]

(ii) Clip notched edge of collar to stitching at

.....

Turn collar. Press.

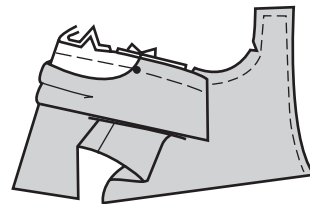


[1]

(iii) Clip neck edge of garment to the stay-stitching.

On outside, pin collar to neck edge, matching
..... and placing
small dot at

Tack/baste.



[2]

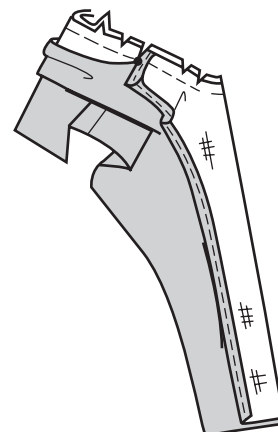
(iv) Turn front extension to outside along fold line,
forming a

Tack/baste.

Clip neck edge through all thicknesses at
small dot. Machine stitch entire neck edge.

..... seam,

..... curves.



[3]

(v) Turn facing to inside. Press. Use

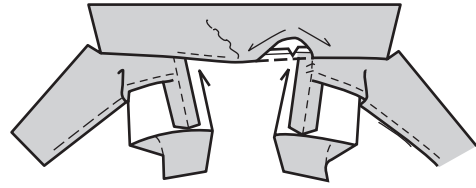
..... stitch to

complete neck edge.

To keep facing in place, stitch facing to

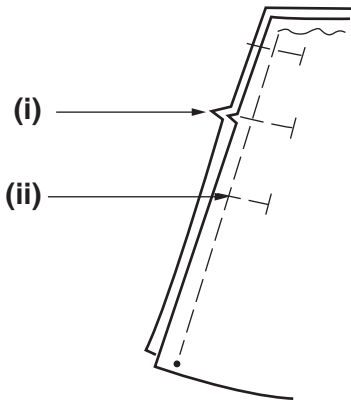
shoulder seam.

.....



[2]

(i) Label the diagrams below to show the stages in the making of a plain seam on the side seam of the skirt, view **B**.

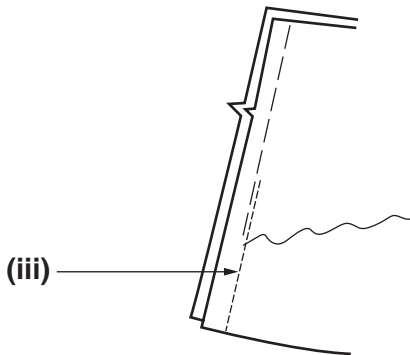


(i)

..... [1]

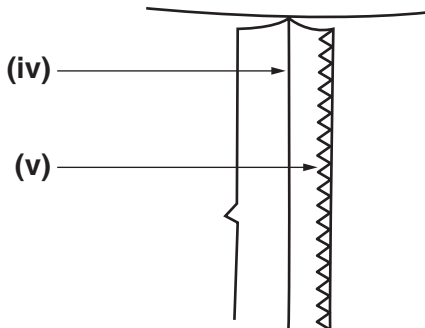
(ii)

..... [1]



(iii)

..... [1]



(iv)

..... [1]

(v)

..... [1]

(j) Suggest **two** ways of completing the top edge of the skirt.

.....

..... [2]

[Total: 78]

Section B

Answer **three** questions from this section.

- 2** (a) State the origin of:
- (i) wool; [2]
 - (ii) nylon. [2]
- (b) Identify **six** properties of wool fibres. [6]
- (c) Briefly explain how the following fibres are processed to make yarns:
- (i) raw wool; [2]
 - (ii) nylon. [2]
- (d) Explain why nylon fibres are often blended with wool fibres. [6]
- [Total: 18]
-
- 3** (a) Briefly describe **four** points which need to be considered when choosing clothes for young people. [4]
- (b) Striped fabrics can be used in an interesting way. Draw, and clearly label, a garment which uses striped fabric to good effect. [4]
- (c) Using notes and labelled diagrams, explain how to:
- (i) bind the edge of a hem using a striped fabric; [4]
 - (ii) make a rouleau loop. [6]
- [Total: 18]
-
- 4** (a) State **four** points which need to be considered when choosing cutting tools for garment making. [4]
- (b) Using notes and labelled diagrams, explain how to work:
- (i) a single dart; [4]
 - (ii) a buttonhole by machine; [4]
 - (iii) an elastic casing. [6]
- [Total: 18]

5 Refer to the long sleeved shirt on the Insert.

(a) Using notes and labelled diagrams, explain how to carry out the following on cotton/polyester lawn fabric:

(i) prepare the sleeve head after cutting out; [2]

(ii) insert the sleeve into the armhole; [5]

(iii) neaten the raw edge. [2]

(b) (i) Name **three** pieces of pressing equipment which could be used to press the sleeve. [3]

(ii) Explain how the equipment listed in (b)(i) should be used correctly. [6]

[Total: 18]

6 Refer to the pants/trousers on the Insert.

(a) Write a detailed order of work for making the hip pocket on the pants/trousers. [6]

(b) Explain why it is important to carry out the following processes when garment making:

(i) clip curves; [2]

(ii) match up notches; [2]

(iii) neaten raw edges; [2]

(iv) layer seam allowances. [2]

(c) Draw and label a care label which would be attached to a garment made from a polyester/viscose blend. [4]

[Total: 18]

7 Refer to the waistcoat on the Insert.

(a) Sketch and label an applique design which would be suitable for the front of the waistcoat. [4]

(b) Using notes and labelled diagrams, explain how to:

(i) prepare the fabric for applique; [4]

(ii) attach the applique using two different machine stitches. [4]

(c) Using labelled diagrams, show how to work:

(i) cross stitch; [3]

(ii) detached chain stitch. [3]

[Total: 18]

BLANK PAGE

Permission to reproduce items where third-party owned material protected by copyright is included has been sought and cleared where possible. Every reasonable effort has been made by the publisher (UCLES) to trace copyright holders, but if any items requiring clearance have unwittingly been included, the publisher will be pleased to make amends at the earliest possible opportunity.

University of Cambridge International Examinations is part of the Cambridge Assessment Group. Cambridge Assessment is the brand name of University of Cambridge Local Examinations Syndicate (UCLES), which is itself a department of the University of Cambridge.