



UNIVERSITY OF CAMBRIDGE INTERNATIONAL EXAMINATIONS  
General Certificate of Education Ordinary Level

CANDIDATE  
NAME

CENTRE  
NUMBER

--	--	--	--	--

CANDIDATE  
NUMBER

--	--	--	--



**FASHION AND FABRICS**

**6050/01**

Paper 1 Theory

**October/November 2007**

**2 hours**

Candidates answer Section A on the Question Paper.

Additional Materials:

Answer Booklet/Paper  
Coloured pencils (not yellow)

Ruler  
Small piece of fabric, needle and thread

**READ THESE INSTRUCTIONS FIRST**

Write your Centre number, candidate number and name on all the work you hand in.  
Write in dark blue or black pen.  
You may use a soft pencil for any diagrams, graphs or rough working.  
Do not use staples, paper clips, highlighters, glue or correction fluid.  
**DO NOT WRITE IN ANY BARCODES.**

**Section A**

Answer **all** parts of Question 1 in the spaces provided on the Question Paper.  
You are advised to spend no longer than 40 minutes on Section A.

**Section B**

Answer any **three** questions.  
Write your answers on the separate Answer Booklet/Paper provided.  
Enter the numbers of the Section B questions you have answered in the grid below.

The Insert is for use with Questions 1, 3, 4, 5 and 7.  
You should illustrate your answers by means of clear, bold diagrams wherever possible.  
You may use a needle and thread and a small piece of fabric to help in making drawings of stitches. This fabric should **not** be handed in with your work.

At the end of the examination, fasten all your work securely together.  
The number of marks is given in brackets [ ] at the end of each question or part question.

For Examiner's Use	
<b>Section A</b>	
<b>Section B</b>	/
<b>Total</b>	

This document consists of **11** printed pages, **1** blank page and **1** Insert.



**Section A**

Refer to the Insert.

Answer **all** questions in the spaces provided.

1 (a) Label the style features/items using at least **two** words in each case:

- |         |         |
|---------|---------|
| A ..... | G ..... |
| B ..... | H ..... |
| C ..... | I ..... |
| D ..... | J ..... |
| E ..... | K ..... |
| F ..... | L ..... |

[12]

(b) The pattern suggests using gingham and seersucker to make the dress view **A**. Complete the following details:

(i) **Fabric – gingham**

- Fibre .....
- Structure .....
- Appearance .....
- Feel/handle .....
- Weight .....

[5]

(ii) **Fabric – seersucker**

- Fibre (**different from the one given in (i)**).....
- Structure .....
- Appearance .....
- Feel/handle .....
- Weight .....

[5]

(iii) Give **two** reasons why gingham is suitable for the dress view **A**.

.....  
.....[2]

(iv) The pattern states that the amount of fabric needed to make the dress view **A** is **without nap**.

What is meant by this term?

.....  
.....[2]

(v) Explain how gingham could be used to good effect if pockets were added to make the dress view **A**.

.....  
.....  
.....[2]

(c) Complete the following list of requirements for the dress view **A**, size 4, made in gingham:

Interfacing: type: ..... width: ..... amount:.....

Bodice lining: fabric type:..... width: ..... amount:.....

Thread: type:..... fibre content:..... amount:.....

Buttons: type:..... made from: ..... size: .....  
[12]

(d) The dress view **A** has a bodice lining. State **one** reason why a lining has been used for the bodice.

.....  
.....[1]

(e) The layout for the dress view **A** is shown below.

44" 45" (115 cm)  
fabric  
without nap  
all sizes



(i) Label the fold and selvages. [2]

(ii) Label the pattern pieces.

- |   |       |   |       |
|---|-------|---|-------|
| 1 | ..... | 5 | ..... |
| 2 | ..... | 6 | ..... |
| 3 | ..... | 7 | ..... |
| 4 | ..... | 8 | ..... |

[8]

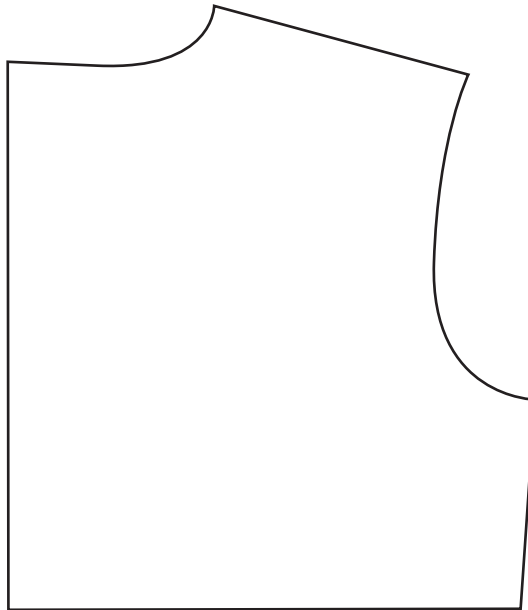
(iii) Name the **two** pattern pieces on the layout above which would need to be turned around, if the fabric had a one-way design.

.....

..... [2]

(iv) On the pattern piece below, draw the following pattern markings:

straight grain line;      lengthening/shortening line;  
stitching line;          buttonhole position.



[4]

(v) Complete the following sentences.

When cutting out the fabric, use a pair of .....

Use ..... cutting strokes to ensure a smooth edge.

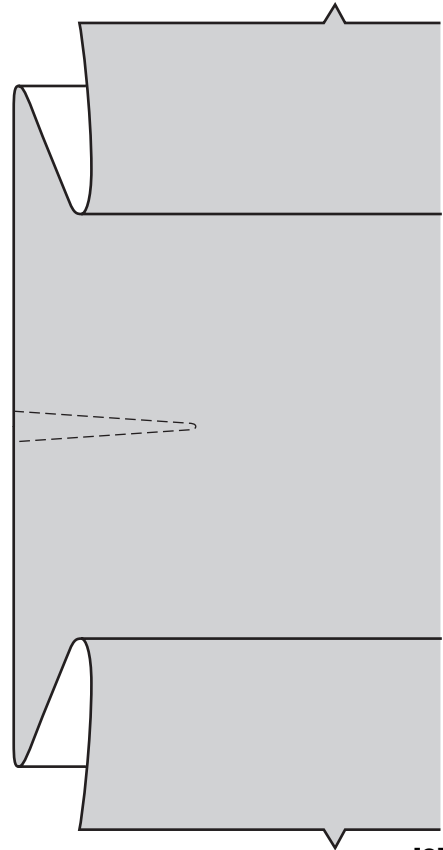
Cut notches ..... to help match pieces when sewing together.

[3]

(f) Use words from the list below to complete the instructions for making a continuous strip opening in the skirt section of the dress.

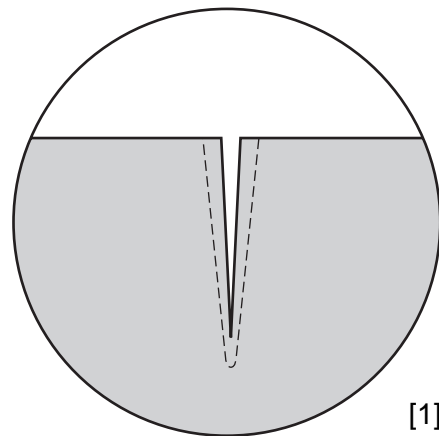
towards; right; 6 mm; machine; continuous lap;  
diagonally; one stitch; wrong; Cut/slash; Tack/baste;

(i) To reinforce the skirt back for the opening, .....  
opening, .....  
stitch on the marked line, taking  
..... across the  
point.



[2]

(ii) ..... along solid  
line.



[1]

7

(iii) Open out slashed edges of skirt back.

.....

right side of continuous lap to

.....

side of skirt back.

Place stitching line on skirt

back along

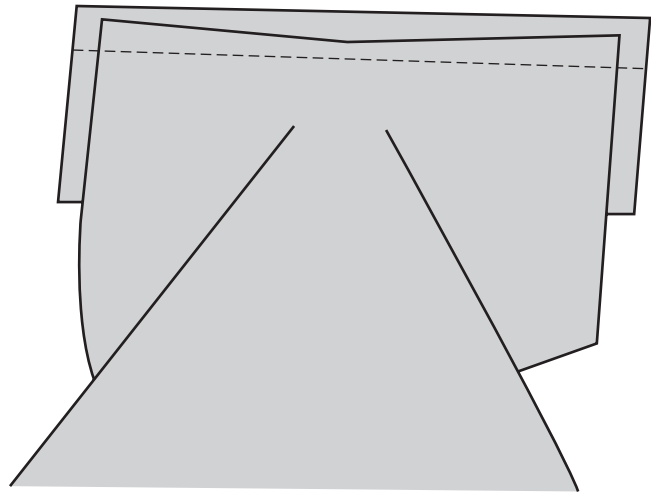
.....

seam allowance of

.....

Machine stitch.

[4]



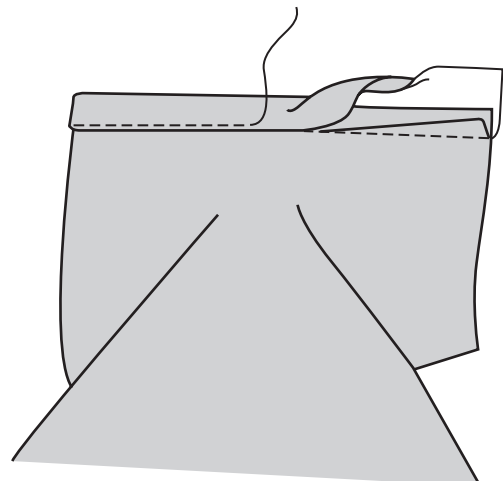
(iv) Press seam allowances

..... lap.

Turn under 6 mm on other side of lap and

machine stitch over previous stitching on

..... side.



[2]

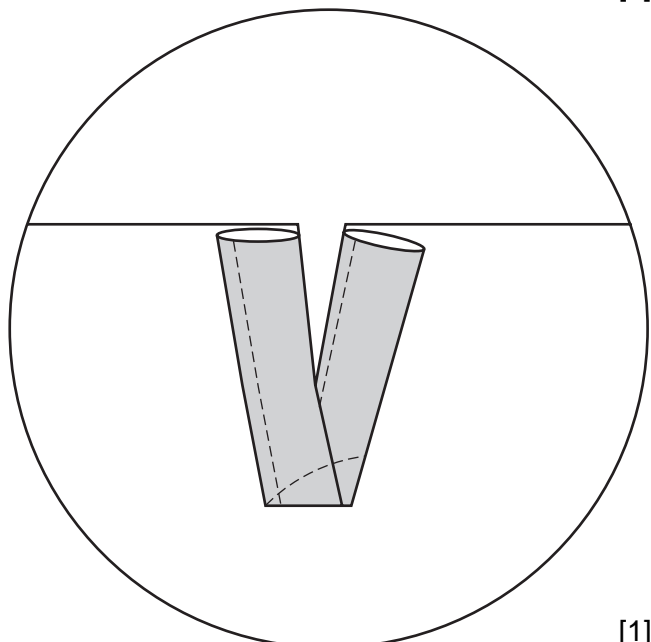
(v) press left back edge of

lap to inside, and stitch

.....

across fold of continuous lap to

hold in place.



[1]

(g) Draw and explain **four** symbols you would expect to find on a care label inside the dress view **A**, made from the gingham fabric described in (b) (i).

[4]

(h) Explain how you should remove the following stains from the dress view **A**, made in the gingham fabric described in (b) (i):

fruit juice .....  
.....[2]

chocolate .....  
.....[2]

[Total: 78]



**Section B**

Answer **three** questions from this section.

- 2 (a) Outline the production of silk from raw material to fabric. [6]
- (b) State **six** properties of silk. [6]
- (c) State **two** uses of silk fabrics. [2]
- (d) Draw a diagram to show the following on woven fabric:
- (i) warp
  - (ii) weft
  - (iii) true cross
  - (iv) selvedge [4]

[Total: 18]

- 3 Refer to the insert.

The dress, view **A** made in gingham, has a lined bodice.

- (a) State the order of work needed to make the lined bodice, ready for sleeve insertion. [6]
- (b) Using notes and labelled diagrams, explain how to carry out the following when making the lined bodice:
- (i) grade the seams;
  - (ii) clip the curves;
  - (iii) reinforce the corners. [6]
- (c) Explain how to work a machine buttonhole on the back opening of the bodice. [6]

[Total: 18]

4 Refer to the insert view **D**.

- (a) State **four** advantages of using a sewing machine. [4]
- (b) State **two** safety features which you would look for when purchasing a new sewing machine. [2]
- (c) Using notes and labelled diagrams, describe how to carry out the following using a sewing machine:
- (i) set the machine to sew zig-zag stitch and neaten an edge; [4]
- (ii) attach a piece of ric-rac braid along the edge of the hem on dress view **D**. [5]
- (d) Describe **three** ways to make sure the machine is kept in good working order. [3]
- [Total: 18]

5 Refer to the insert.

- (a) Sketch a child's top which has a stand collar (mandarin shirt collar with a band). Label clearly. [4]
- (b) Using notes and labelled diagrams, explain how to:
- (i) apply iron-on interfacing to the collar sections made from gingham fabric; [3]
- (ii) assemble the collar ready for application to the top; [6]
- (iii) attach the collar to the top. [5]
- [Total: 18]

6 (a) Describe the following fabrics:

- (i) wool tweed [4]
- (ii) viscose velvet [4]
- (b) For each of the fabric finishes listed below, name a fabric on which the finish can be used:
- (i) moth proofing
- (ii) bacteriostatic
- (iii) easy-care [3]
- (c) Give **one** reason for the use of each of the fabric finishes in (b). [3]
- (d) Describe the method of pressing the fabrics mentioned in (a). [4]
- [Total: 18]

7 Refer to the insert view **D**.

(a) Sketch a repeated design suitable for decorating the hem of the dress view **D**, using the following stitches in the design:

(i) herringbone stitch

(ii) satin stitch

(iii) fly stitch [3]

(b) Using notes and labelled diagrams, explain how to work:

(i) the stitches in (a); [9]

(ii) tacking stitch to turn up the hem; [3]

(iii) slip-hemming stitch to secure the hem. [3]

[Total: 18]

---

Permission to reproduce items where third-party owned material protected by copyright is included has been sought and cleared where possible. Every reasonable effort has been made by the publisher (UCLES) to trace copyright holders, but if any items requiring clearance have unwittingly been included, the publisher will be pleased to make amends at the earliest possible opportunity.

University of Cambridge International Examinations is part of the Cambridge Assessment Group. Cambridge Assessment is the brand name of University of Cambridge Local Examinations Syndicate (UCLES), which is itself a department of the University of Cambridge.