

Centre Number	Candidate Number	Name
---------------	------------------	------

UNIVERSITY OF CAMBRIDGE INTERNATIONAL EXAMINATIONS
General Certificate of Education Ordinary Level

FASHION AND FABRICS

6050/01

Paper 1 Theory

October/November 2006

2 hours

Candidates answer Section A on the Question Paper.

Additional Materials: Answer Booklet/Paper
 Coloured pencils (not yellow)
 Ruler
 Small piece of fabric, needle and thread

READ THESE INSTRUCTIONS FIRST

Write your Centre number, candidate number and name on all the work you hand in.
Write in dark blue or black pen.
You may use a soft pencil for any diagrams, graphs or rough working.
Do not use staples, paper clips, highlighters, glue or correction fluid.
The Insert is for use with Questions 1 and 7.

You should illustrate your answers by means of clear, bold diagrams wherever possible.
You may use a needle and thread and a small piece of fabric to help in making drawings of stitches.
This fabric should **not** be handed in with your work.

Section A

Answer **all** parts of Question 1 in the spaces provided on the Question Paper.
You are advised to spend no longer than 40 minutes on Section A.

Section B

Answer any **three** questions.
Write your answers on the separate Answer Booklet/Paper provided.
Enter the numbers of the Section B questions you have answered in the grid below.

At the end of the examination, fasten all your work securely together.
The number of marks is given in brackets [] at the end of each question or part question.

For Examiner's Use	
Section A	
Section B	
Total	

This document consists of **9** printed pages, **3** blank pages and an Insert.



Section A

Answer **all** questions in the spaces provided.

1 (a) Refer to the Insert. Label the style features/items using at least two words in each case:

- A
- B
- C
- D
- E
- F
- G
- H
- I
- J

[10]

(b) The pattern suggests using corduroy and denim to make the skirt view **D**. Complete the following details:

Fabric - Corduroy

Fibre

Structure

Appearance

Feel/handle

Weight.....

[5]

Fabric - Denim

Fibre

Structure

Appearance

Feel/handle

Weight.....

[5]

(c) State **two** different reasons why each of these fabrics would be suitable for the skirt view **D**.

Corduroy is suitable for skirt view **D** because

.....
.....[2]

Denim is suitable for the skirt view **D** because

.....
.....[2]

(d) Draw the care label you would expect to find in the skirt view **D** when it is made from the denim fabric described in **(b)**.

[5]

(e) Refer to the Insert.

Fill in the spaces below for the requirements to complete the skirt, view **D** size 10, made in denim.

Fabric: width (**one** only) amount required

Thread: amount fibre content
colour

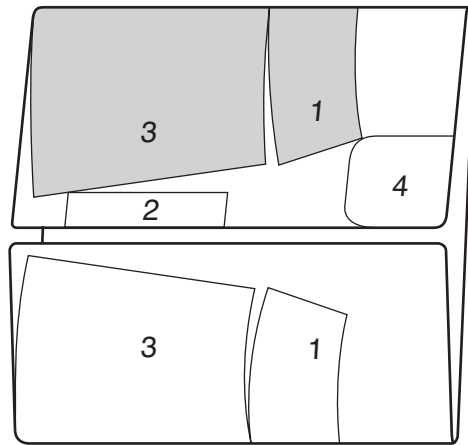
Zipper: length made from
colour

D-Ring: amount size

Twill tape: amount width
made from

[13]

(f) The layout for the skirt view **D** is shown below.



(i) Label the folds and selvedges. [3]

(ii) Label the pattern pieces:

1

2

3

4 [4]

(iii) Explain why pieces 1 and 3 are shaded.

.....

.....

..... [1]

(iv) On the pattern piece below, draw and label **six** pattern markings:



[6]

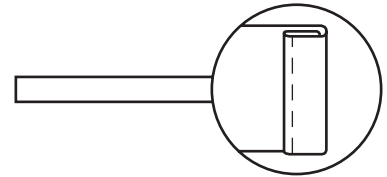
- (g) Using notes and labelled diagrams, explain **one** method of transferring a pattern marking from the pattern to the fabric.

[4]

(h) Use all of the words from the box below to complete the instructions for making the pocket with a trimming.

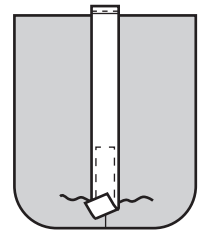
corner	fold	press	fasten off
balance marks	inner	pin	facing
skirt front	placement	seam allowance	outside
reinforce	machine	tack	edges

(i) Cut a piece of ribbon or twill tape 20.5 cm long for the lower trim of the pocket. Make a 6 mm double turning on one end and in place.



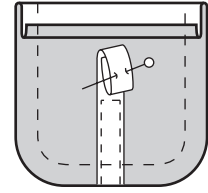
[1]

(ii) On outside of pocket, place prepared twill tape over..... line on pocket, matching lower raw edges. the twill tape to lower edge. Machine close to, taking care to turn the accurately.



[4]

(iii) the twill tape
out of the way while preparing the top of the
pocket.



..... under 6mm
on upper edge of pocket.

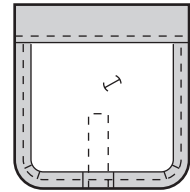
[2]

Turn upper edge to
along
line, forming a

Machine along seam line on raw edges. Trim to
6mm.

[3]

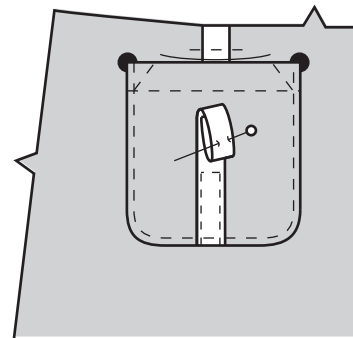
(iv) Turn facing to inside. Press and tack along
.....
..... ,
keeping the pocket shape accurate.



Machine close to
..... edge of facing.

[2]

(v) On outside, pin pocket to
..... placing upper corners at
.....



[2]

(vi) Machine close to edge of pocket, making
sure to
both top corners of the pocket.

..... threads
securely.

[2]

(i) Suggest **two** ways in which different trimmings could be used to decorate the pocket.

.....
..... [2]

[Total: 78]

[Turn over

Section B

Answer **three** questions.

- 2 (a) Name **three** cotton fabrics, each with a different construction. [3]
- (b) State **six** properties of cotton. [6]
- (c) Explain how the following fabric finishes are carried out on cotton and state **one** benefit of each finish:
- (i) brushing;
- (ii) mercerising;
- (iii) bleaching. [3 x 3]
- [Total: 18]**
- 3 (a) State **four** benefits of making your own clothes. [4]
- (b) Give **three** body measurements required for making a sleeveless blouse. [3]
- (c) Explain how the following alterations are made on a paper pattern:
- (i) alter a round neckline to a square shape; [4]
- (ii) make a facing to fit the new square neckline. [4]
- (d) State **three** ways of making the square neckline more decorative. [3]
- [Total: 18]**
- 4 (a) State **four** differences between warp and weft knitting. [4]
- (b) Name **one** garment which could be made from each type of knitting. [2]
- (c) State **four** points you need to consider when laying/cutting/machining knitted fabrics. [4]
- (d) Briefly explain how bonded fabrics are manufactured. [4]
- (e) State **four** points to explain how bonded fabrics are different from woven fabrics. [4]
- [Total: 18]**
- 5 (a) Sketch a sleeve with a buttoned cuff. [2]
- (b) Explain, using notes and labelled diagrams, how to work the following on the sleeve sketched in (a):
- (i) work a continuous strip opening; [6]
- (ii) make an interfaced cuff; [4]
- (iii) attach the cuff to the sleeve sketched in (a). [6]
- [Total: 18]**

- 6 (a) Explain the difference between sew-in and iron-on interfacing. [3]
- (b) Using notes and labelled diagrams, explain how to:
- (i) prepare a waistband with sew-in interfacing, for a skirt; [6]
 - (ii) attach the waistband to the skirt; [6]
 - (iii) attach a hook and eye to the waistband. [3]
- [Total: 18]**

7 Refer to the Insert.

The skirt view **D** has a pocket.

- (a) Draw a sketch to explain how you could make the pocket more decorative by adding machine or hand embroidery. [4]
- (b) Using notes and labelled diagrams, explain how to work the embroidery chosen in (a). [6]
- (c) Suggest **two** occasions when the embroidery should be pressed during the construction of the skirt. [2]
- (d) Explain how to:
- (i) use **three** pieces of pressing equipment; [3]
 - (ii) repair some damaged top-stitching on the pocket. [3]
- [Total: 18]**

Copyright Acknowledgements:

© Disney.

Permission to reproduce items where third-party owned material protected by copyright is included has been sought and cleared where possible. Every reasonable effort has been made by the publisher (UCLES) to trace copyright holders, but if any items requiring clearance have unwittingly been included, the publisher will be pleased to make amends at the earliest possible opportunity.

University of Cambridge International Examinations is part of the University of Cambridge Local Examinations Syndicate (UCLES), which is itself a department of the University of Cambridge.