

Centre Number	Candidate Number	Name
---------------	------------------	------

UNIVERSITY OF CAMBRIDGE INTERNATIONAL EXAMINATIONS  
General Certificate of Education Ordinary Level

**FASHION AND FABRICS**

**6050/01**

Paper 1 Theory

May/June 2004

**2 hours**

Candidates answer Section A on the Question Paper.

Additional Materials: Answer Booklet/Paper  
Coloured pencils (not yellow)  
Ruler  
Small piece of fabric, needle and thread

**READ THESE INSTRUCTIONS FIRST**

Write your Centre number, candidate number and name on all the work you hand in.  
Write in dark blue or black pen.  
You may use a soft pencil for any diagrams, or rough working.  
Do not use staples, paper clips, highlighters, glue or correction fluid.  
The insert is for use with Questions 1, 3 and 7.

You should illustrate your answers by means of clear, bold diagrams wherever possible.  
You may use a needle and thread and a small piece of fabric to help in making drawings of stitches. This fabric should **not** be handed in with your answers.

**Section A**

Answer **all** parts of Question 1 in the spaces provided on the Question Paper.  
You are advised to spend no longer than 40 minutes on Section A.

**Section B**

Answer any **three** questions.  
Write your answers on the separate Answer Booklet/Paper provided.  
At the end of the examination, fasten all your work securely together.  
Enter the numbers of the Section B questions you have answered in the grid below.  
The number of marks is given in brackets [ ] at the end of each question or part question.

For Examiner's Use	
<b>Section A</b>	
<b>Section B</b>	/
<b>Total</b>	

If you have been given a label, look at the details. If any details are incorrect or missing, please fill in your correct details in the space given at the top of this page.

Stick your personal label here, if provided.

This document consists of **8** printed pages and an insert.



**Section A**

Refer to the Insert.

Answer **all** questions in the spaces provided.

- 1 (a) Using at least **two** words in each case, label the style features/items shown on page 2 of the Insert.

<b>A</b> .....	<b>H</b> .....
<b>B</b> .....	<b>I</b> .....
<b>C</b> .....	<b>J</b> .....
<b>D</b> .....	<b>K</b> .....
<b>E</b> .....	<b>L</b> .....
<b>F</b> .....	<b>M</b> .....
<b>G</b> .....	<b>N</b> .....

[14]

- (b) The skirt View E could be made in **denim** and **piqué**. Describe these fabrics in the spaces below.

Fabric: **Denim**

Fibre .....

Structure .....

Appearance .....

Feel/handle .....

Weight .....[5]

Fabric: **Piqué**

Fibre .....

Structure .....

Appearance .....

Feel/handle .....

Weight .....[5]

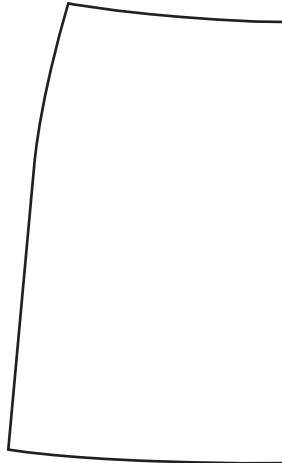
(c) Explain how the colour of denim fabric is achieved. ....  
.....  
.....  
.....[2]

(d) Give **one** reason why each of the following fabric finishes would be used on denim.  
A **shrink-resistant finish** could be used because .....  
.....  
.....  
A **brushed finish** could be used because .....  
.....  
.....[2]

(e) Give **two** reasons why denim would be suitable for the skirt View E.  
1. ....  
2. ....[2]

(f) State **two** body measurements which would be needed for making the skirt View E.  
1. ....  
2. ....[2]

- (g) (i) Label the diagram below to show **two** places where alterations could be made to lengthen the skirt front pattern piece.

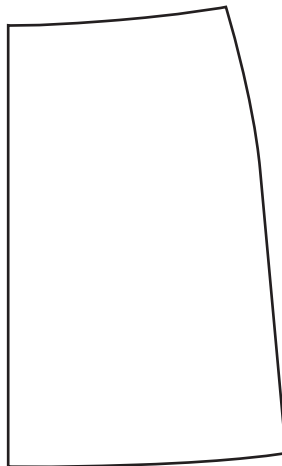


[2]

- (ii) Name another pattern piece for the skirt which would also need to be altered in the same way as (i) above.

.....  
.....[1]

- (h) Draw **seven** pattern markings which you would expect to find on the pattern piece for the skirt back pattern piece.



[7]

- (i) Name **two** different seams which could be used on the skirt made from denim.

Name of seam ..... Neatening .....

Where used .....

Name of seam ..... Neatening .....

Where used .....[6]

- (j) Complete the following table of notions needed to make the skirt View E.

Thread: Amount ..... Fibre Content .....

Zip: Length ..... Fibre Content .....

Button: Size ..... Amount .....

Made from .....

D-ring: Size .....

Trimming: Width ..... Amount .....

Fibre Content ..... [11]

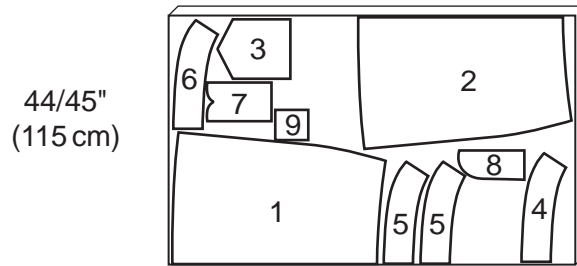
- (k) State how much fabric would be needed to make the skirt View E for size 15/16.

Fabric width ..... amount .....

Interfacing width ..... amount ..... [4]

(I) The layout for the skirt View E is shown below.

(i) Label the fold and selvages.



Cut one of pieces 7 and 8.

[2]

(ii) Label the pattern pieces.

- |         |         |
|---------|---------|
| 1 ..... | 6 ..... |
| 2 ..... | 7 ..... |
| 3 ..... | 8 ..... |
| 4 ..... | 9 ..... |
| 5 ..... |         |

[9]

(iii) Explain why piece 5 is cut on the fold. ....

.....  
 .....[2]

(iv) Explain why only **one** each of pieces 7 and 8 are required. ....

.....  
 .....[2]

**Section B**

Answer **three** questions from this section.

- 2 (a)** State the origin of the following fibres:
- (i)** flax
  - (ii)** polyester
- [4]
- (b)** Briefly explain how the following fibres are produced from raw material to yarn.
- (i)** flax
  - (ii)** polyester
- [6]
- (c)** Using notes and labelled diagrams, explain the following:
- (i)** plain weave
  - (ii)** weft knitting
- [8]
- 3** Refer to the Insert.
- (a)** Using notes and labelled diagrams, explain how to:
- (i)** insert a zip on a cotton gabardine fabric using the concealed method. [9]
  - (ii)** attach a hook and work a bar above the zip. [4]
- (b)** Give the order of work for making an inverted pleat. [5]
- 4 (a)** Sketch a child's top which has a faced opening at the centre front. Label fully and indicate the fabric to be used. [4]
- (b)** Using notes and labelled diagrams, explain how to:
- (i)** make a faced opening in the fabric stated in **(a)**. [6]
  - (ii)** store the top when not in use. [2]
- (c)** Draw the care label you would expect to find in the child's top sketched in **(a)**. [6]

5 Explain the following terms and state one use for each.

- (a) sew-in interfacing
- (b) iron-on interfacing
- (c) bias-binding
- (d) seam binding
- (e) mending tape
- (f) Bondaweb.

[3 x 6]

- 6 (a) State **six** factors which a teenager should consider when buying or making a skirt. [6]
- (b) Explain the importance of your chosen factors. [6]
- (c) Sketch and label **three** accessories which could be worn with a skirt and explain why accessories are so popular in current fashion. [6]

7 Refer to the Insert – Skirt View E.

- (a) Sketch the skirt and show how a decorative border could be stitched by hand and/or machine. Label fully. [4]
- (b) Explain how to carry out the stitching. [7]
- (c) Describe the equipment required to press the decorative border on the skirt. [3]
- (d) Explain, in detail, how to work machine top-stitching on the pocket of the skirt. [4]

---

*Copyright Acknowledgements:*

© Simplicity Pattern No. 9705.

Every reasonable effort has been made to trace all copyright holders. The publishers will be pleased to hear from anyone whose rights we have unwittingly infringed.

University of Cambridge International Examinations is part of the University of Cambridge Local Examinations Syndicate (UCLES), which is itself a department of the University of Cambridge.