

CAMBRIDGE INTERNATIONAL EXAMINATIONS
Joint Examination for the School Certificate
and General Certificate of Education Ordinary Level

FASHION AND FABRICS

6050/2

PAPER 2 Practical Test OCTOBER/NOVEMBER SESSION 2002

2 hours 30 minutes

Additional materials:

Fabric	Sewing equipment
Interfacing	Sewing thread
Pattern	Tacking thread
Pencil	

TIME 2 hours 30 minutes

This question paper consists of 6 printed pages and 2 blank pages.



Materials provided

- (a) Butterick pattern **6562** size 7–8–10.
An illustration of the shorts, **view D**, is on the envelope containing the pattern.
- (b) A piece of fabric at least 90 cm wide and 38 cm long.
- (c) A piece of interfacing 6 cm wide and 38 cm long.
- (c) Sewing thread to match the fabric.
- (d) Tacking thread.

For this test you are asked to prepare the pattern and make up the right half of the shorts, **size 10**, omitting the carriers and side slits.

Before you begin, you should study the question paper carefully together with the illustration, the pattern and the fabric.

This is a multi-sized pattern. The cutting line for **size 10** is shown by the outer black solid line.

A seam allowance of 1.5 cm is allowed within the pattern although it is not marked.

THE LABEL

<p>Candidate's name</p> <p>.....</p> <p>Centre No./Index No.</p> <p>..... /</p>

The Test

1 Preparation

- (a) Write your name and index number on the envelope provided.
- (b) Select and separate pattern pieces 6, 9, 10 and 11.
- (c) On pattern piece 9, the waistband, cut through the C.B. line and keep the piece labelled: '9 Waistband'.
- (d) On pattern pieces 10 and 11, cut through the line 'cut off for D', and keep only the upper pieces for the shorts.

2 Cutting out

- (a) Place the pattern pieces on the fabric as shown in the layout.
- (b) Cut out the right half of the shorts.
- (c) Transfer the pattern markings which are needed for making up the test.
- (d) Fold the waistband pattern in half lengthways and cut out the interfacing, as shown in the layout.

3 Making up

It is important that pressing is done at all stages.

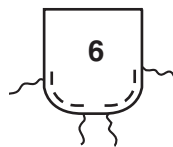
Make up the right half of the shorts as follows:

(a) Ease stitching

Ease stitch the upper edge of the shorts front between the small •'s

(b) Pocket

- (i) Ease stitch the curved edges of the pocket 10mm from the edge as shown in the diagram.



- (ii) Prepare the top of the pocket and top-stitch 2.5 cm from the folded edge.
- (iii) Complete the pocket by pulling the threads to ease in the fullness on the curves.
- (iv) Attach the pocket to the shorts front with **two lines** of machine stitching – one on the edge and the other 6 mm inside the edge.
- (v) Fasten the ends of machine stitching by hand.

(c) Front opening

Turn the front extension to the wrong side and tack in position along the fold. **Do not** remove this tacking at the end of the test.

(d) Dart

- (i) Work the dart on the shorts back.
- (ii) Secure the ends of the machine stitching at the point by hand.

(e) Side seam

Work the side seam.

(f) Waistband

- (i) Prepare the waistband which is to be interfaced.
- (ii) Prepare the upper edge of the shorts by turning the centre back seam allowance to the wrong side and tack in position.
- (iii) Attach the waistband easing the upper edge of the shorts front to fit.
- (iv) Secure the inside of the waistband with a suitable hand sewn stitch.

(g) Inner leg seam

Work the inner leg seam. **Do not** neaten or trim this seam.

(h) Shorts hem

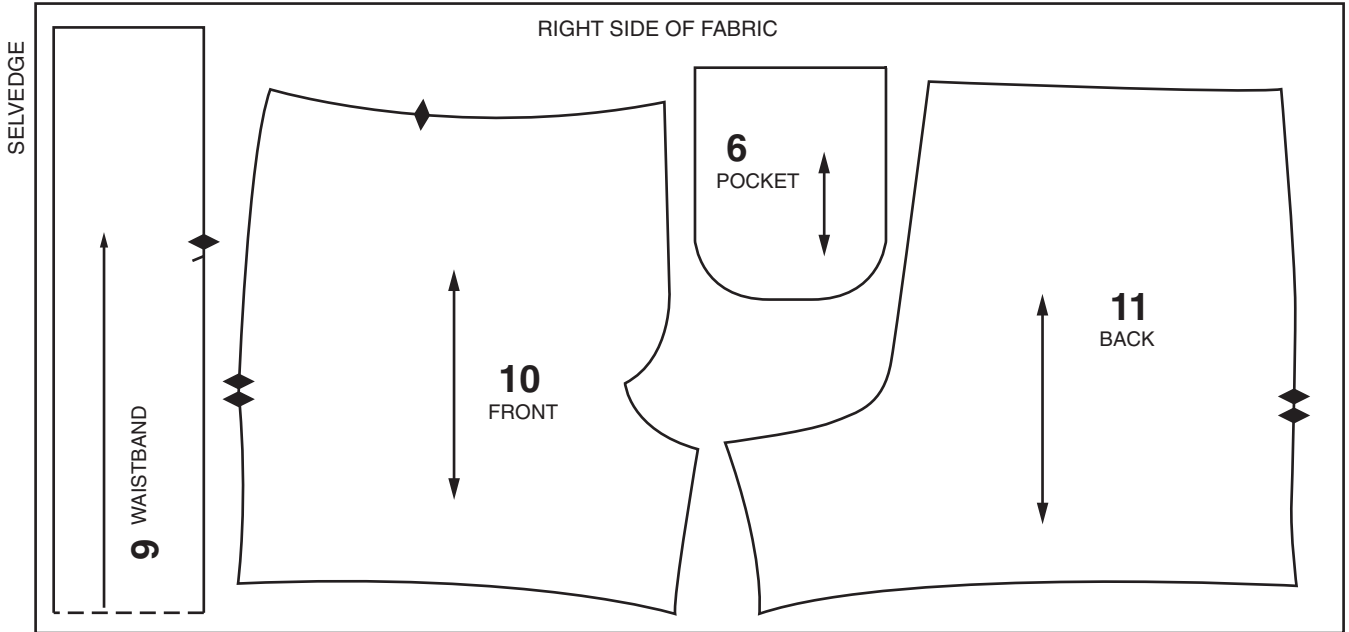
- (i) Turn up the shorts hem (1.5 cm is allowed on this pattern).
- (ii) Secure the hem with machine stitching.

At the end of the examination remove the needle and unnecessary pins from your work. Write your name and index number on the label provided. Cut out the label and tack it to your test. The label should not cover any stitching and should be on **single** fabric. Press your work, fold it carefully and place it in the envelope provided. Do not include the scraps of fabric you have left over.

LAYOUT FOR INTERFACING



LAYOUT FOR 90 cm wide fabric



Copyright Acknowledgements:

Butterick Pattern 6562. © Butterick Pattern Service. New York