

Candidate Name \_\_\_\_\_

Centre Number	Candidate Number

**CAMBRIDGE INTERNATIONAL EXAMINATIONS**  
**Joint Examination for the School Certificate**  
**and General Certificate of Education Ordinary Level**

**FASHION AND FABRICS**

**6050/1**

PAPER 1 Theory

**OCTOBER/NOVEMBER SESSION 2002**

2 hours

Additional materials:  
Answer paper  
Coloured pencils (not yellow)  
Ruler  
Small piece of fabric, needle and thread

**TIME** 2 hours

**INSTRUCTIONS TO CANDIDATES**

Write your name, Centre number and candidate number in the spaces at the top of this page and on all separate answer paper used.

**Section A**

Answer **all parts** of Question 1.

Write your answers in the spaces provided on the question paper.

**Section B**

Answer any **three** questions.

Write your answers on the separate answer paper provided.

At the end of the examination,

- 1 fasten the separate answer paper securely to the question paper.
- 2 enter the numbers of the Section B questions you have answered in the grid below.

**INFORMATION FOR CANDIDATES**

The number of marks is given in brackets [ ] at the end of each question or part question.

The insert is for use with Questions 1, 6 and 7.

You are advised to spend no longer than 40 minutes on Section A.

You should illustrate your answers by means of clear, bold diagrams wherever possible. You may use a needle and thread and a small piece of fabric to help in making drawings of stitches. This fabric should not be handed in with your answers.

FOR EXAMINER'S USE	
Section A	
Section B	
TOTAL	

**This question paper consists of 8 printed pages and an insert.**



**Section A**

Answer **all** questions in the spaces provided.

Refer to the insert sheet.

1 (a) (i) Label the style features, using at least **two** words in each case.

- A .....
- B .....
- C .....
- D .....
- E .....
- F .....
- G .....
- H .....
- I .....
- J .....
- K .....

[11]

(ii) State **two** advantages and **two** disadvantages of using this type of multi-sized pattern.

Advantages: .....

Disadvantages: .....[4]

(iii) The pattern suggests using a cotton fabric for the pyjamas.

Name and describe **two** different cotton fabrics:

Name: .....

Structure: .....

Appearance: .....

Feel/handle: .....

Weight: .....[5]

Name: .....

Structure: .....

Appearance: .....

Feel/handle: .....

Weight: .....[5]

(iv) Give **two** reasons why cotton fabric is suitable for the pyjamas.

.....  
.....[2]

(v) The pattern states that a stretchable ribbed knit for the neckband should be used. Give **two** reasons for this.

.....  
.....[2]

(vi) Name **two** fabric finishes which would be used on children's cotton pyjamas.

Name of finish: .....

Reason: .....[2]

Name of finish: .....

Reason: .....[2]

(b) (i) State **four** body measurements which would be needed before making the pyjamas, View B.

.....  
.....  
.....[4]

(ii) Complete the table of requirements for making the pyjamas, view B in size 6.

Cotton fabric (width) 115 cm/45" (amount) .....

Stretchable ribbed knit (width) ..... (amount) .....

Elastic (amount) ..... (width) .....

Thread (fibre content) ..... (amount) ..... [7]

(iii) State whether the fabric quantity stated in (ii) is with or without nap.

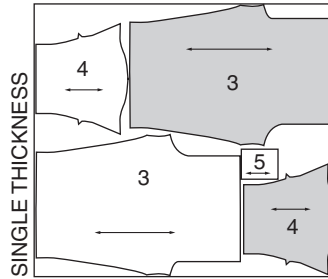
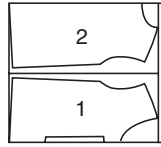
.....[1]

(c) The layout below is for the pyjamas View B:

**PYJAMAS B**

USE PIECES 1 2 3 4 5

44" 45" (115CM) WITH NAP  
SIZES 3 4 5 6 7



(i) Label the fold and selvedges. [5]

(ii) Label the pattern pieces.

- 1 ..... 2 .....
- 3 ..... 4 .....
- 5 .....

[5]

(iii) Explain what is meant by WITH NAP.

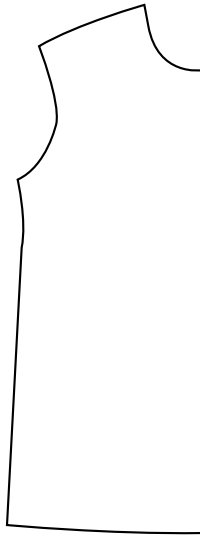
.....  
.....[2]

(iv) Explain why pieces 3 and 4 are shaded.

.....  
.....[2]

(v) Draw in the following pattern markings on the pyjama top front:

Single notches; cutting line; seam allowance; lengthening/shortening line; balance mark for side slit; hemline; balance mark for pocket.



[7]

(vi) The pyjamas could be made in a checked fabric. State and explain **one** point you need to remember when laying the pattern onto the fabric.

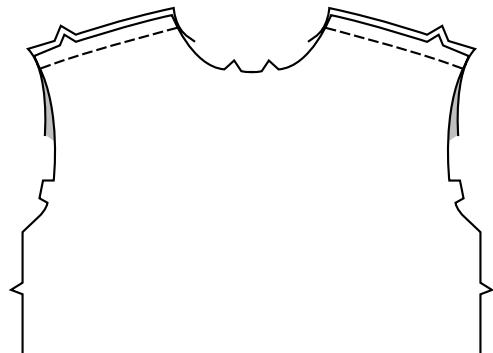
.....  
.....[1]

(d) Use the words below to complete the instructions for making the stretchable neck band and attaching it to the pyjamas.

lengthwise; notches; seam line; 6mm; pin; even; top stitch; seam; wrong sides; small dots; 6mm.

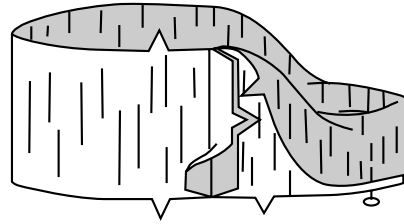
(i) Match the .....

Pin, tack and machine the shoulder seams.

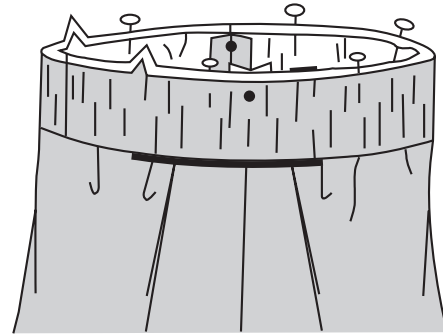


(ii) Stitch the centre back .....  
of the neck band.

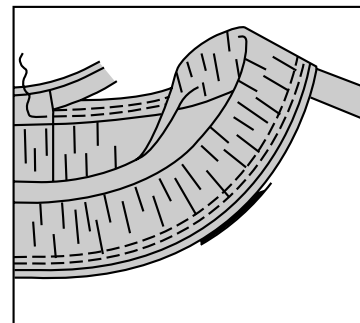
Fold the band in half, .....  
with .....  
together. Press and .....



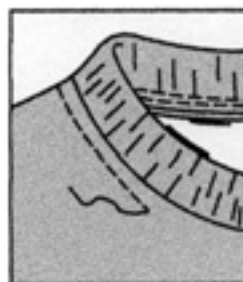
(iii) On outside, pin band to neck edge,  
matching notches and .....  
at shoulder seams.  
Keep raw edges .....  
Baste or tack in place.



(iv) Machine the band in place along  
.....  
Stitch again, ..... away  
from the first stitching, enclosing the  
seam allowance.



(v) On outside, ..... the neck  
edge ..... from the first  
line of stitching. Press.



[11]

**Section B**

Answer **three** questions from this section.

- 2 (a) Explain the difference between a staple yarn and a continuous filament yarn and give **two** examples of each. [6]
- (b) Give **two** examples of a blend and state **two** reasons why blending is carried out. [4]
- (c) State **four** advantages and **four** disadvantages of acetate fibres. [8]
- 3 (a) Describe the following fabrics, commenting on their structure; handle/feel; appearance and weight.
- (i) wool felt; [4]
- (ii) cotton towelling; [4]
- (iii) Vilene. [4]
- (b) State **two** uses for Vilene fabric. [2]
- (c) Give **two** reasons for using Vilene fabrics in garments. [2]
- (d) Explain how you would wash Vilene fabric. [2]
- 4 (a) Sketch and label a garment with a faced neck opening. [4]
- (b) Explain how to work:
- (i) the faced opening; [8]
- (ii) a hook and worked bar fastening. [6]
- 5 (a) Show with clearly labelled diagrams how to:
- (i) cut and
- (ii) join a crossway strip; [8]
- (iii) use the crossway strip to bind an edge. [6]
- (b) Explain how to repair a plain hem which has lost some of its stitches. Use diagrams where necessary. [4]

6 Refer to the insert sheet.

(a) Draw the symbols which you would find on the care label in the cotton pyjamas. [5]

(b) State how the following stains should be removed from cotton:

(i) toothpaste;

(ii) felt pen;

(iii) chocolate.

[6]

(c) Give instructions for patching a hole in the knee of the pyjama trousers. [7]

7 Refer to the insert sheet.

(a) Draw and label a design suitable for the pyjama pocket. **Three** hand embroidery stitches should be used. [6]

(b) Explain how to work the embroidery stitches chosen in (a). [6]

(c) Name **three** pieces of small equipment which can be used for embroidery. Give advice on the care of the named equipment to keep it in good condition. [6]



**CAMBRIDGE INTERNATIONAL EXAMINATIONS**  
**Joint Examination for the School Certificate**  
**and General Certificate of Education Ordinary Level**

**FASHION AND FABRICS**

**6050/1**

PAPER 1 Theory

**OCTOBER/NOVEMBER SESSION 2002**

INSERT

2 hours

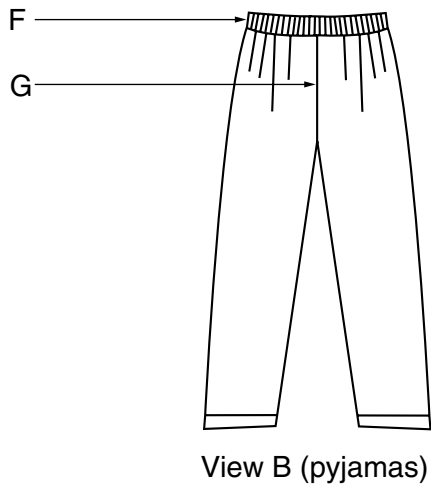
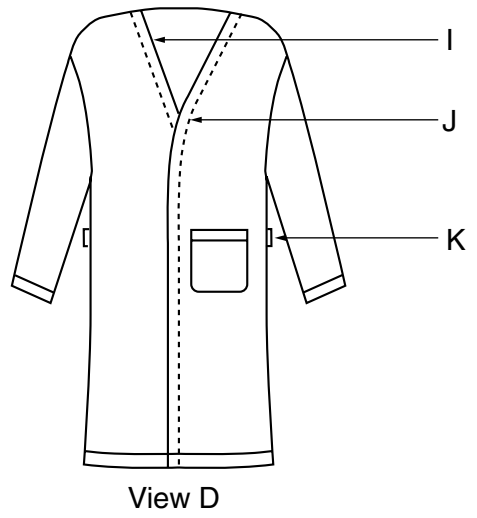
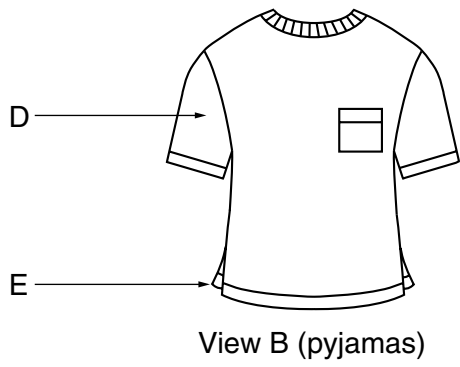
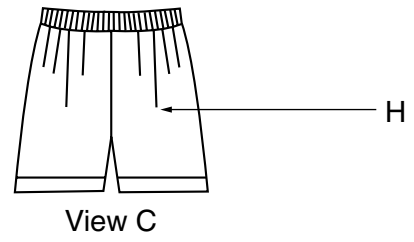
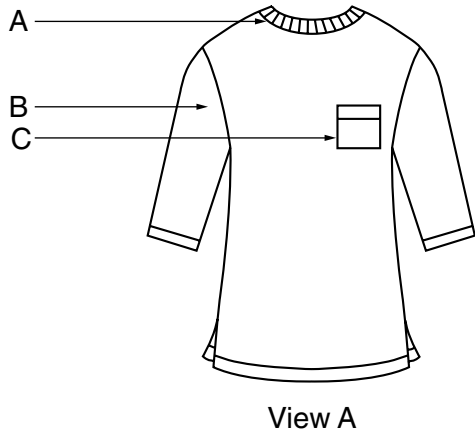
**INSTRUCTIONS TO CANDIDATES**

This insert is for use with Questions 1, 6 and 7.

---

**This insert consists of 4 printed pages.**



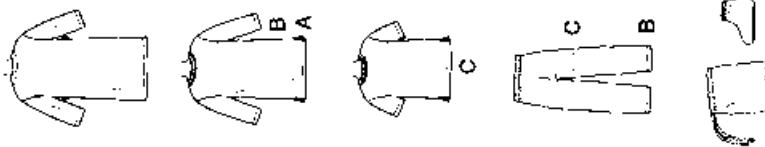


PICK-A-KNIT™ RULE  
FOR THIS PATTERN—J (10cm) OF KNIT FABRIC MUST STRETCH CROSSWISE FROM HERE  
POUR CE PATRON—J (10cm) DE TRICOT DOIVENT S'ÉTRIER EN TRAVERS D'ICI

TO HERE  
JUSQU'ICI

# 7407

19 PIECES



**CHILD'S PYJAMAS, NIGHTSHIRT, ROBE, PYJAMA BAG AND BOOTIES:** NightshIRT A and pyjama top B and C have side slits, ribbed knit neckband, and optional patch pocket. A and B have long sleeves. C has short sleeves. Long pyjama pants B and shorts C without side seams, have elastic waistline casing. Front wrap robe has patch pocket and tie belt with carriers. Booties have non-skid soles and elasticized ankles. Bag has self-drawstring. Suitable for Overlock/Sergé.

**Fabrics:** For children's sleepwear, use fabrics and trims that meet the Flammability Standards set by the U.S. government. **Neckband A, B, C** in stretchable ribbed knit. See Pick-A-Knit® Rule. **Robe, Bag and Booties** in: Flannel, Cotton and Cotton Blends, Fleece. **Robe** also in Batiks. For pile, shaded or one-way designs fabrics, use with nap yardage/layouts.

**Notions:** Thread. **Booties:** one pkg. of Jiffy Grip™, one pkg. 1/2" elastic. **Look for Simplicity notions.**

**BODY MEASUREMENTS**

Chest	22	23	24	25	26	27	In
Waist	20%	21	21%	22	23	23%	
Hips	—	24	25	26	27	28	
Back-neck to waist	9	9%	10	10%	11%	12	
Sizes	3	4	5	6	7	8	

Nightshirt A	45***	1%	1%	1%	1%	1%	1%	Yd
Pyjamas B	45***	1%	1%	2	2%	2%	2%	Yd
Pyjamas C	45***	1%	1%	1%	1%	1%	1%	Yd

**Neckband A, B, C - Stretchable Ribbed Knit Fabric** - 1/4 yd. of 18" to 20" tubular or 36" to 40" flat.

**Elastic B, C** - 1/2 yd. of 1" wide.

**Robe and Tie Belt**  
45\*\*\* 1/4 1/4 2 2% 2% 2% 2% Yd  
60\*\*\* 1/4 1/4 1% 1% 1% 1% 1% Yd

**Interfacing** - 1 1/4 yd of 22" to 25" lightweight fusible.

**Booties**  
45\*\*\* 1/4 1/4 1/4 1/4 1/4 1/4 1/4 Yd  
**Interfacing** - 1/4 yd of 22" to 25" lightweight fusible.

**Bag** - 1/4 yd. of 45\*\*\*

**CLOTHING MEASUREMENTS (Chest & Hip Printed on Pattern Tissue)**

Nightshirt A	22	23	24	25	26	27	In
Top B, C	17%	18%	19%	20%	21%	22%	
Robe	27%	28%	30%	32%	34%	36%	
Pants Side Length B	23	24%	25	27%	29	30%	
Shorts Side Length C	10	10%	11	11%	12	12%	

\*With nap \*\*With or without nap

**PYJAMAS, CHEMISE DE NUIT, PEIGNOIR, SAC POUR PYJAMA ET BOTTES POUR ENFANT:** Chemise de nuit A et haut de pyjama B et C avec lentes sur les côtés, bande de cou en jersey côtelé et poches à poches facultatives. A et B à manches longues. C à manches courtes. Pantalon du long pyjama B et short C avec élastique coulissé à la taille et à sauts coutures de côté. Peignoir drapé devant avec poche plaquée et ceinture à nouer avec passants. Bottes à semelles anti-dérapantes et crans en élastiques. Sac avec cordon de coulisse en même tissu. Ces modèles ne conviennent pas pour la machine Overlock/Sergé.

**Tissus:** Pour les vêtements de nuit d'enfant, utilisez tissus et garnitures en conformité avec le Règlementation d'incendie établies par le gouvernement. **Bandes de cou A, B, C** en jersey extensible côtelé. Voyez la règle Choisir-Un-Jersey. **Peignoir, sac et bottes** en flanelle, coton et cotonnades, molleton. **Peignoir** en bat-les aussi. Pour les tissus à long point, de différents tons ou à motifs unidirectionnels, utilisez mètre et plans de coupe avec sens.

**Merci:** 711 Bottes: Un paquet de Jiffy Grip™, un paquet d'élastique de 1,3cm. Demandez la mercerie Simplicity.

**MEASURES NORMALISEES**

Pattern	56	58	61	64	66	69	cm
Taille	52	53	55	56	58	60	
Manches	—	61	64	66	69	71	
Dos (encolure à taille)	23	24	25.5	27	29.5	31	
Tailles	3	4	5	6	7	8	

Chemise de nuit A	115cm**	1.10	1.10	1.20	1.20	1.20	1.30	m
Pyjama B	115cm**	1.70	1.70	.80	1.90	2.00	2.20	m
Pyjama C	115cm**	1.20	1.20	1.30	1.30	1.30	1.40	m

**Bande de cou A, B, C - Jersey extensible côtelé** - 0.20m de 46cm à 50cm tubulaire ou de 90cm à 102cm non tubulaire.

**Elastique B, C** - 0.70m de 2.5cm de large.

**Peignoir et ceinture à nouer**  
115cm\*\* 1.70 1.80 2.10 2.30 2.40 m  
155cm\*\* 1.20 1.30 1.30 1.40 1.90 m

**Emballage** - 1.10m de 55cm à 64cm léger, thermocollant.

**Bottes**  
115cm\*\* 0.50 0.50 0.50 0.50 0.60 0.60 m  
**Emballage** - 0.30m de 55cm à 64cm léger, thermocollant.

**Sac** - 0.50m et 115cm\*\*

**MEASURES DU VÊTEMENT (ours de poitrine & hanches imprimés sur le papier de soie)**

Chemise de nuit A	56	58.5	61	63.5	66	68.5	cm
Hauts B, C	44.5	47	49.5	52	54.5	57	
Peignoir	70	72.5	77.5	82.5	87.5	92.5	
Longueur de côté du pantalon B	58.5	62	66	70	73.5	77.5	
Longueur de côté des shorts C	25.5	26.5	28	29	30.5	32	

\*With nap \*\*With or without nap

---

*Copyright Acknowledgements:*

Question 1. © Simplicity Pattern Company Incorporated