

UNIVERSITY OF CAMBRIDGE INTERNATIONAL EXAMINATIONS  
General Certificate of Education Ordinary Level

**FASHION AND FABRICS**

**6050/02**

Paper 2 Practical Test

October/November 2004

**2 hours 30 minutes**

Additional Materials:

Sewing equipment	Sewing thread to match fabric
Fabric	Tacking thread
Pattern	Pencil
Interfacing	Ruler
	Scissors

This document consists of 4 printed pages.



**Materials provided**

- (a) McCalls pattern **3353** size **CCE**.
- (b) A piece of fabric 115 cm wide and 32 cm long.
- (c) A piece of lightweight interfacing 22 cm wide and 32 cm long.
- (d) Sewing thread to match the fabric.
- (e) Tacking thread.

For this test you are to prepare the pattern to make up the right half of the dress bodice, **View D, size 6**.

Before you begin you should study the question paper carefully, together with the illustration, the pattern and the fabric.

This is a multi-sized pattern, the cutting line for **size 6** is shown by the outer black solid line.

**A seam allowance of 1.5 cm is allowed within the pattern although it is not marked.**

**THE LABEL**

<p><b>Candidate's name</b></p> <p>.....</p> <p><b>Centre No./Index No.</b></p> <p>..... / .....</p>
---

## The Test

### 1 Preparation

- (a) Write your name and index number on the envelope provided.
- (b) Select and separate pattern pieces 1, 2, 5, 6, 9 and 10 for the dress bodice **View D size 6** (Make sure you have pattern piece **6** in size **6**.)

### 2 Cutting out

- (a) Place the pattern pieces on the fabric as shown in the layout. For the purpose of this test place pattern pieces 1 and 2 to the selvedge. On pattern piece 6, the back facing, use the centre back fold line as the straight grain line.
- (b) Cut out the right half of the bodice.
- (c) Transfer the pattern markings which are needed for making up the test.
- (d) Cut out pattern pieces 5 and 6 from the interfacing as shown in the layout.

### 3 Making up

*It is important that pressing is done at all stages.*

Make up the right half of the bodice as follows:

#### (a) Shoulder seam

Work the shoulder seam.

#### (b) Back and front facings

- (i) Interface the wrong side of the back and front facings.
- (ii) Join the back neck facing to the front facing.
- (iii) Neaten the free edge of the facing.
- (iv) Use the prepared facing to neaten the front and neck edge of the bodice.
- (v) Tack the centre front and neck edge with the seam on the edge.

**Do not remove** these tacking stitches at the end of the test.

#### (c) Underarm seam

Work the underarm seam.

#### (d) Sleeve

- (i) Work two rows of gathering stitches between the small circles around the head of the sleeve.
- (ii) Work the sleeve seam, but **do not** neaten or trim this seam.
- (iii) Work gathering stitches round the lower edge of the sleeve.

**(e) Sleeve band**

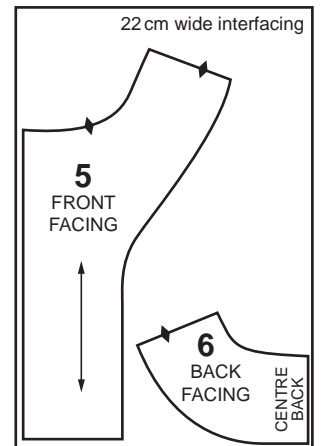
- (i) Work the seam.
- (ii) Attach the sleeve band to the lower edge of the sleeve, adjusting the gathers to fit.
- (iii) Fold the sleeve band to the INSIDE on the fold line.
- (iv) Hand-sew the sleeve band over the seam.

**(f) Setting in the sleeve**

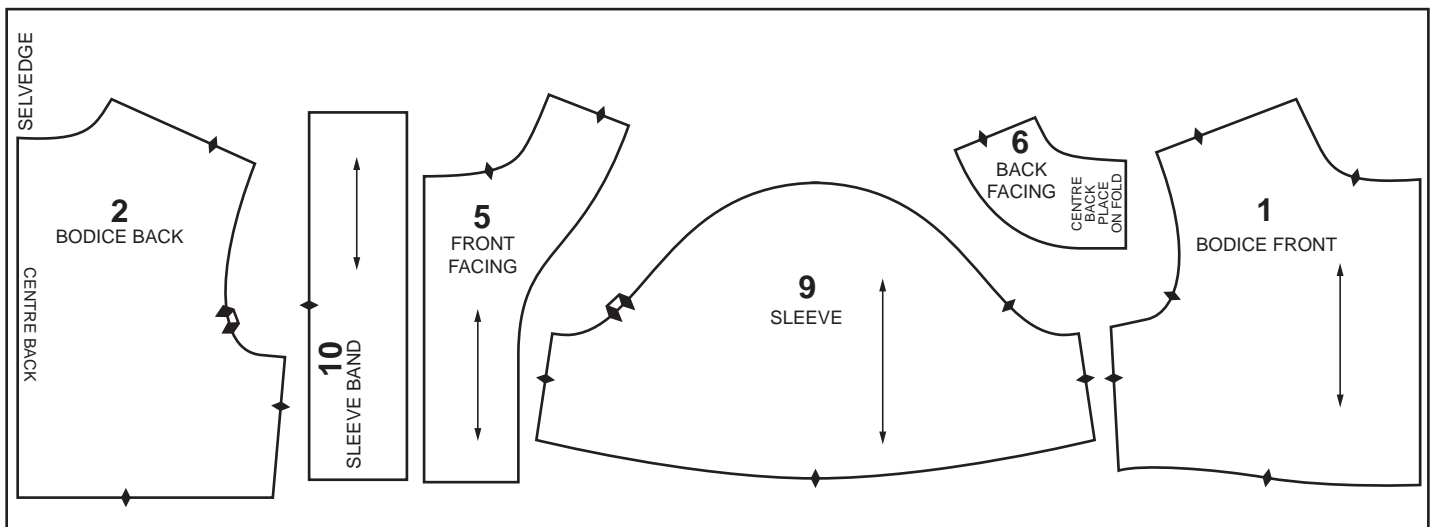
- (i) Set the sleeve into the armhole matching the notches, and the balance marks.
- (ii) Pull up the gathering threads to fit.
- (iii) **Do not** neaten or trim this seam.

At the end of the examination remove the needle and unnecessary pins from your work. Write your name and index number on the label provided. Cut out the label and tack it to your test. The label should not cover any stitching and should be on **single** fabric. Press your work, fold it carefully and place it in the envelope provided. Do not include the scraps of fabric which you have left over.

LAYOUT FOR INTERFACING



LAYOUT FOR 115 cm WIDE FABRIC



Place pattern pieces 1 and 2 to the selvedge. On pattern piece 6, use fold line as the straight grain line