

UNIVERSITY OF CAMBRIDGE INTERNATIONAL EXAMINATIONS  
General Certificate of Education Ordinary Level

**FASHION AND FABRICS**

**6050/02**

Paper 2 Practical Test

May/June 2004

**2 hours 30 minutes**

Additional Materials:

Sewing equipment

Fabric

Pattern

Sewing thread

Tacking thread

Pencil

This document consists of 4 printed pages.



**Materials provided**

- (a) McCalls pattern **3542**, size **CCE**.  
An illustration of the dress, **view C** is on the envelope containing the pattern.
- (b) A piece of fabric at least 90 cm wide and 36 cm long.
- (c) Sewing thread to match the fabric.
- (d) Tacking thread.

For this test you are to prepare the pattern to make up the right half of the dress bodice, **view C size 6**, attaching the pocket to the right front, but **omitting** the **collar**.

Before you begin, you should study the question paper carefully, together with the illustration, the pattern and the fabric.

This is a multi-size pattern. The cutting line for **size 6** is shown by **the outer black solid line**.

**A seam allowance of 1.5 cm is allowed within the pattern although it is not marked.**

**THE LABEL**

<p><b>Candidate's name</b></p> <p>.....</p> <p><b>Centre No./Index No.</b></p> <p>..... / .....</p>
-----------------------------------------------------------------------------------------------------

**The Test****1 Preparation**

- (a) Write your name and index number on the envelope provided.
- (b) Select and separate pattern pieces 1, 2, 3, 5, 6 and 9, making sure you have pattern pieces **6 and 9** for **size 6**.

**2 Cutting out**

- (a) Place the pattern pieces on the fabric as shown in the layout on page 4. For the purpose of this test place pattern pieces 2 and 3 to the selvedge. On pattern piece 6, the back facing, use the centre fold line as the straight grain.
- (b) Cut out the right half of the bodice, including the pocket.
- (c) Transfer the pattern markings which are needed for making up the test.

**3 Making up**

*It is important that pressing is done at all stages.*

Make up the right half of the bodice as follows:

**(a) Pocket**

- (i) Make up the pocket and machine stitch the hem 2.5 cm from the upper edge.
- (ii) Place the pocket in position on the front and attach it with two rows of top-stitching 6 mm apart.
- (iii) Secure the ends of the machine stitching by hand.

**(b) Shoulder seam**

Work the shoulder seam.

**(c) Neck facing**

- (i) Join the back neck facing to the front facing.
- (ii) Neaten the free edge of the facing.
- (iii) Use the prepared facing to neaten the front and neck edge of the bodice.

**(d) Underarm seam**

Work the underarm seam.

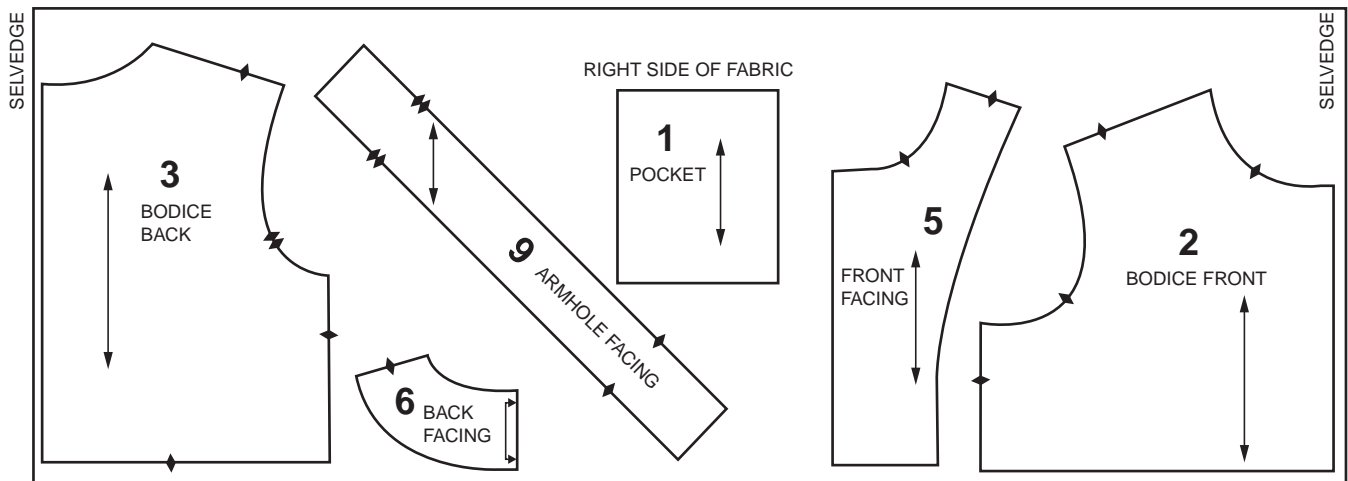
**(e) Armhole facing**

- (i) Work the facing seam.
- (ii) Fold facing in half lengthwise, **WRONG SIDE TOGETHER**, matching notches, circles and seams. Press.

**(f) Attaching armhole facing**

- (i) Attach the facing to the armhole.
- (ii) Secure the facing to the bodice with a suitable hand sewn stitch.

At the end of the examination remove the needle and unnecessary pins from your work. Write your name and index number on the label provided. Cut out the label and tack it to your test. The label should not cover any stitching and should be on **single** fabric. Press your work, fold it carefully and place it in the envelope provided. Do not include the scraps of fabric you have left over.

**LAYOUT FOR 90cm WIDE FABRIC**

For the purpose of this test place pattern pieces 2 and 3 to the selvedge.  
Use the fold line on pattern piece 6 as the straight grain line.