

CAMBRIDGE INTERNATIONAL EXAMINATIONS
General Certificate of Education Ordinary Level

FASHION AND FABRICS

6050/02

Paper 2 Practical Test

October/November 2003

2 hours 30 minutes

Additional Materials:

Sewing equipment	Sewing thread to match fabric
Fabric	Tacking thread
Pattern	Pencil
Interfacing	Ruler
	Scissors

This document consists of 4 printed pages.



Materials provided

- (a) Simplicity pattern **8716**, size **AA**.
An illustration of the child's shirt is on the envelope containing the pattern.
- (b) A piece of fabric at least 90 cm wide and 38 cm long.
- (c) A piece of lightweight interfacing 12 cm wide and 22 cm long.
- (d) Sewing thread to match the fabric.
- (e) Tacking thread.

For this test you are to prepare the pattern and make up the right half of the shortened shirt, **size 6**, attaching the pocket to the right front, but, **omitting** the sleeve. Before you begin you should study the question paper carefully together with the illustration, the pattern and the fabric.

This is a multi-sized pattern. The cutting line for **size 6** is shown by the outer black solid line.

A seam allowance of 1.5 cm is allowed within the pattern although it is not marked.

THE LABEL

<p>Candidate's name</p> <p>.....</p> <p>Centre No./Index No.</p> <p>.....</p>

The Test**1 Preparation**

- (a) Write your name and index number on the envelope provided.
- (b) Select and separate pattern pieces 3, 5, 6 and 7 for the shirt.
- (c) On pattern pieces 3 and 6 cut between the parallel lines for lengthening and shortening and keep the pattern pieces labelled 3 and 6.
- (d) On pattern piece 7, the collar, place your ruler along the straight grain arrow and using a pencil, extend this line onto the part of the collar marked 7. Cut through the centre back line and keep the pattern piece labelled 7.

2 Cutting out

- (a) Place the pattern pieces on the fabric as shown in the layout. For the purpose of this test place pattern piece 6 to the selvedge.
- (b) Cut out the right half of the shortened shirt and the pocket.
- (c) Transfer the pattern markings which are needed for making up the test.
- (d) Cut out the interfacing for the collar as shown in the layout. For the purpose of this test the shirt front is not to be interfaced.

3 Making up

It is important that pressing is done at all stages.

Make up the right half of the shortened shirt as follows:

(a) Pocket

- (i) Make up the pocket.
- (ii) Place the pocket in position on the shirt front and attach it, using two lines of machine stitching 6 mm apart.
- (iii) Secure the ends of machine stitching by hand.

(b) Shoulder seam

Work the shoulder seam.

(c) Facing

Neaten the unnotched edge of the facing.

(d) Collar

Make up the collar which is to be interfaced.

(e) Attaching the collar

- (i) Attach the collar to the neckline using the front facing.
- (ii) Secure the front facing to the shoulder seam on the wrong side.

(f) Top-stitching

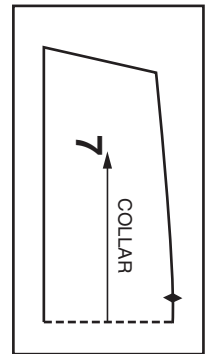
On the outside top-stitch 6 mm from the front, neck and collar edges, squaring stitching at the corners.

(g) Side seam

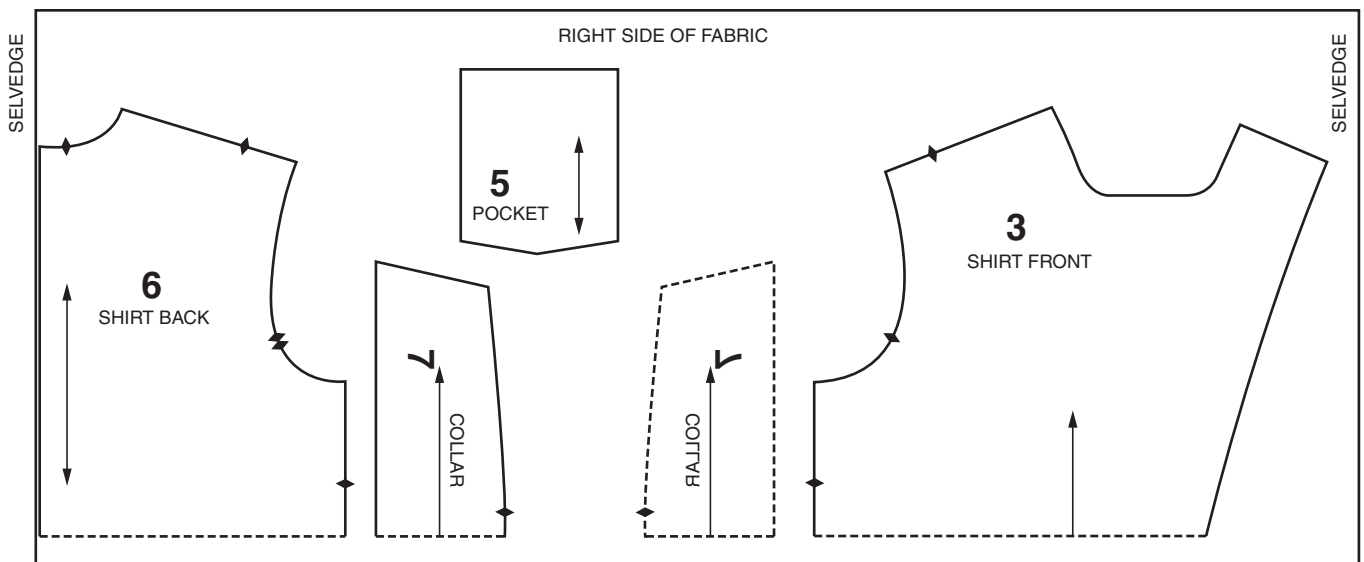
Work the side seam.

At the end of the examination remove the needle and unnecessary pins from your work. Write your name and index number on the label provided. Cut out the label and tack it to your test. The label should not cover any stitching and should be on **single** fabric. Press your work, fold it carefully and place it in the envelope provided. Do not include the scraps of fabric you have left over.

LAYOUT FOR INTERFACING



LAYOUT FOR 90 cm WIDE FABRIC



For the purpose of this test place pattern piece **6** to the selvedge