

Centre Number	Candidate Number	Name
---------------	------------------	------

CAMBRIDGE INTERNATIONAL EXAMINATIONS
General Certificate of Education Ordinary Level

FASHION AND FABRICS

6050/01

Paper 1 Theory

October/November 2003

2 hours

Candidates answer Section A on the Question Paper.

Additional Materials: Answer Booklet/Paper
Coloured pencils (not yellow)
Ruler
Small piece of fabric, needle and thread

READ THESE INSTRUCTIONS FIRST

Write your Centre number, candidate number and name on all the work you hand in.
Write in dark blue or black pen in the spaces provided on the Question Paper.
You may use a soft pencil for any diagrams, or rough working.
Do not use staples, paper clips, highlighters, glue or correction fluid.
The insert is for use with Questions 1, 4, 5 and 7.

You should illustrate your answers by means of clear, bold diagrams wherever possible. You may use a needle and thread and a small piece of fabric to help in making drawings of stitches. This fabric should **not** be handed in with your work.

Section A

Answer **all** parts of Question 1 in the spaces provided on the Question Paper.
You are advised to spend no longer than 40 minutes on Section A.

Section B

Answer any **three** questions.
Write your answers on the separate answer Booklet/Paper provided.
Enter the numbers of the Section B questions you have answered in the grid below.
At the end of the examination, fasten all your work securely together.
The number of marks is given in brackets [] at the end of each question or part question.

If you have been given a label, look at the details. If any details are incorrect or missing, please fill in your correct details in the space given at the top of this page.

Stick your personal label here, if provided.

For Examiner's Use	
Section A	
Section B	
Total	

This document consists of **8** printed pages and an insert.



Section A

Refer to the Insert (see attached sheet)

- 1 (a) Using at least **two** words in each case, label the style features/items shown on the insert.

A	H
B	I
C	J
D	K
E	L
F	M
G	N

[14]

- (b) The pattern envelope suggests using **gabardine** for the jacket view D and **jersey** for the dress view A. Describe these fabrics :

(i) **Gabardine:**

Fibre

Structure

Appearance

Feel/handle

Weight

[5]

- (ii) Give **two** reasons why this fabric is suitable for the jacket:

.....

..... [2]

(iii) **Jersey:**

Fibre

Structure

Appearance

Feel/handle

Weight

[5]

(iv) Give **two** reasons why this fabric is suitable for the dress:

.....
..... [2]

(c) (i) State how much fabric is required to make the jacket and dress in size 9/10:

Jacket:

Fabric width amount

Dress:

Fabric width amount [4]

(ii) Complete the list of notions needed to complete the jacket and dress:

Jacket:

Thread: type amount

Interfacing: type width amount

Beaded trimming: width length

Buttons: type size amount

Dress:

Thread: type amount

Zip: type: length [14]

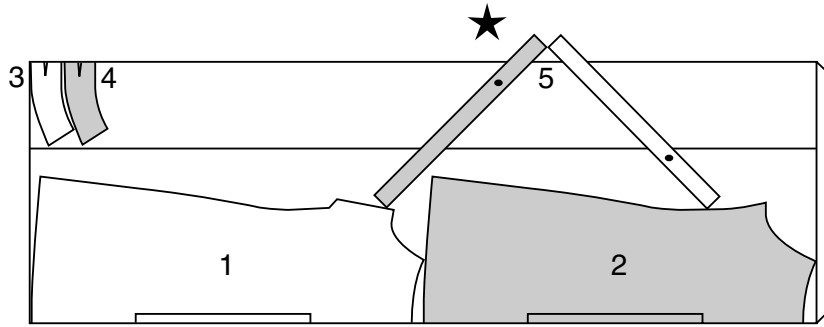
(iii) State alternative fastenings which could be used on the jacket and dress:

Jacket [1]

Dress [1]

(d) The layout below is for the dress view A, size 9/10.

44" 45" (115CM)
with nap
sizes 7/8 9/10 11/12
13/14 15/16



(i) Label the folds and selvages. [2]

(ii) Label the pattern pieces:

- 1
- 2
- 3
- 4
- 5 [5]

(iii) Explain why there is a * next to pattern piece 5 on the layout:

.....
..... [1]

(iv) Explain why pieces 2 ,4 and 5 are shaded:

..... [1]

(e) (i) Give **two** reasons why interfacing is used for the flap and front facing of the jacket.

.....
.....
..... [2]

(ii) Describe a suitable interfacing for gabardine fabric:

Structure

Weight [2]

(iii) Explain how the interfacing described in (ii) should be attached to the gabardine fabric:

.....
..... [1]

(f) Use the words from the list below to complete the instructions for preparing and attaching the facing for the jacket front:

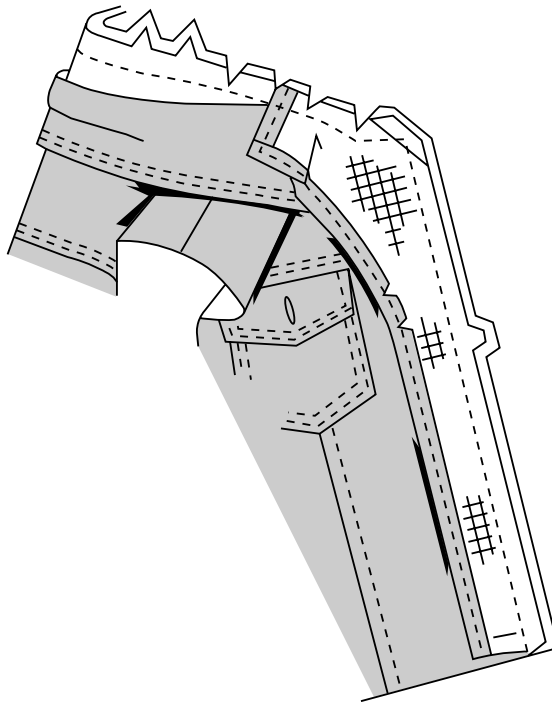
Clip; seam line; right sides; 6 mm ($\frac{1}{4}$ ");
machine; wrong sides; diagonally; Trim;

(i) Pin interfacing toof front facing sections.

Cut across corners to reduce bulk.

Machine baste $\frac{1}{2}$ " (1.3 cm) from raw edges.

..... interfacing close to stitching.

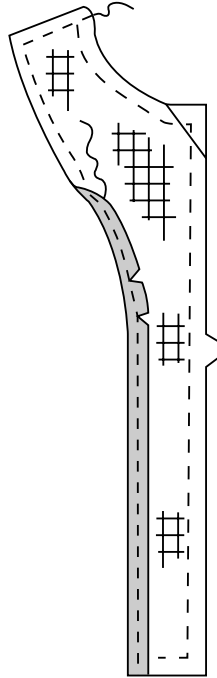


To edge finish, fold over along curved raw edge and

..... stitch close to fold.

..... curved edge of facing so that it lies flat.

- (ii) With together, pin facing to front and neck edge over collar edges.
Pin and tack.



Clip neck edge through all thicknesses at small dot.

Machine stitch front and neck edge on the

..... [8]

- (g) (i) Explain what is meant by understitching

.....

.....

..... [4]

- (ii) State where understitching would be used on the dress view A.

..... [1]

- (h) (i) Suggest a suitable seam neatening for the side seam of the dress made in cotton jersey.

.....

..... [1]

- (ii) Give **two** reasons for your choice.

.....

..... [2]

Section B

Answer **three** questions from this section.

- 2**
- (a) State the origin of acrylic fibres. [1]
 - (b) Describe **six** properties of acrylic fibres. [6]
 - (c) Name **one** fabric made from acrylic fibres and describe it in detail. [5]
 - (d) State **six** uses of acrylic fabrics, and give a reason for each choice. [6]
- 3** Explain the following terms found on the pattern instruction sheet and give a specific use for each:
- (a) layering [3]
 - (b) notching [3]
 - (c) lengthening and shortening line [3]
 - (d) machine baste [3]
 - (e) with nap [3]
 - (f) stay-stitching [3]
- 4** Refer to the dress view A on the insert sheet.
- Using notes and clearly labelled diagrams, explain how to:
- (a) work the single dart [6]
 - (b) attach the interfacing to the facing ready for placing on neckline. [4]
 - (c) attach the facing to the neck edge. [6]
 - (d) press the facing correctly when completed. [2]
- 5** Refer to the jackets view D and E on the insert.
- (a) State **four** reasons for making one of these jackets. [4]
 - (b) State **four** advantages of buying a similar jacket ready-made. [4]
 - (c) Draw a labelled sketch of **two** accessories which could be worn with the jacket. [4]
 - (d) Discuss how the jacket would be a useful addition to your wardrobe, giving specific examples. [6]

- 6 (a) Sketch and label the front and back view of an outfit you could wear for a named sport . [6]
- (b) Name the fibre(s) and fabric(s) used giving **four** reasons for your choice. [6]
- (c) Explain using labelled diagrams how to work **one** edge finish on a garment you have sketched in (a). [6]

7 Refer to the insert sheet.

The jacket view D or E could have decorative hand stitching on the front.

- (a) Draw a sketch of the jacket to show how **three** hand stitches could be used. [6]
- (b) Explain how to work the **three** stitches you have chosen. [3 × 3]
- (c) List the equipment required to press the jacket and explain how to do the final pressing. [3]

CAMBRIDGE INTERNATIONAL EXAMINATIONS
General Certificate of Education Ordinary Level

FASHION AND FABRICS

6050/01

Paper 1

October/November 2003

2 hours

INSERT

READ THESE INSTRUCTIONS FIRST

This insert is for use with Questions 1, 4, 5 and 7.

This document consists of **3** printed pages and **1** blank page.



