

CAMBRIDGE INTERNATIONAL EXAMINATIONS
General Certificate of Education Ordinary Level

FASHION AND FABRICS

6050/01

Paper 1

October/November 2003

2 hours

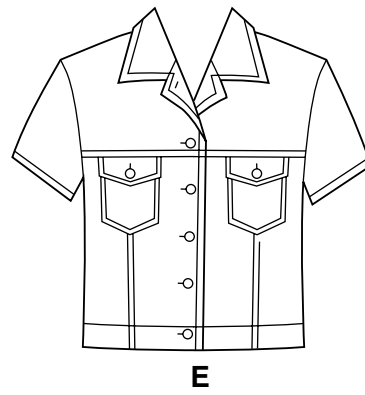
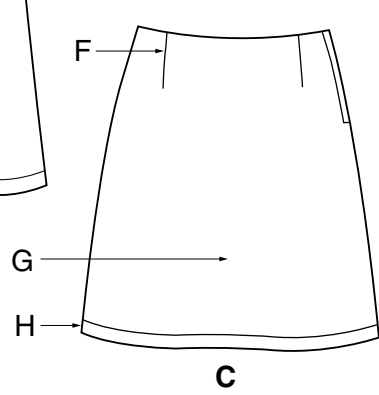
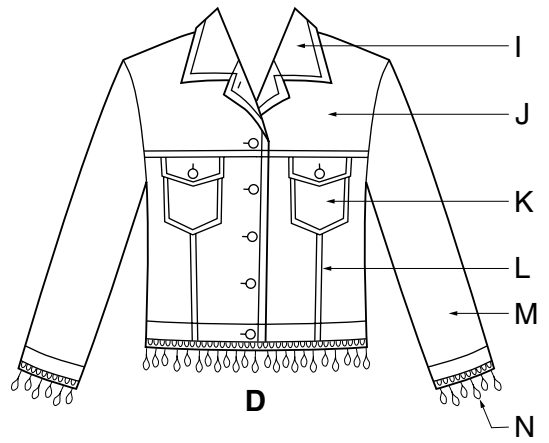
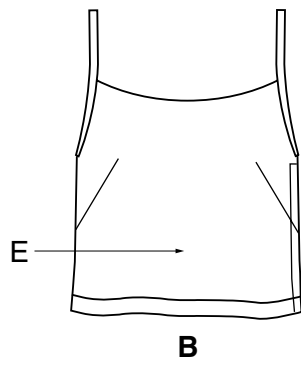
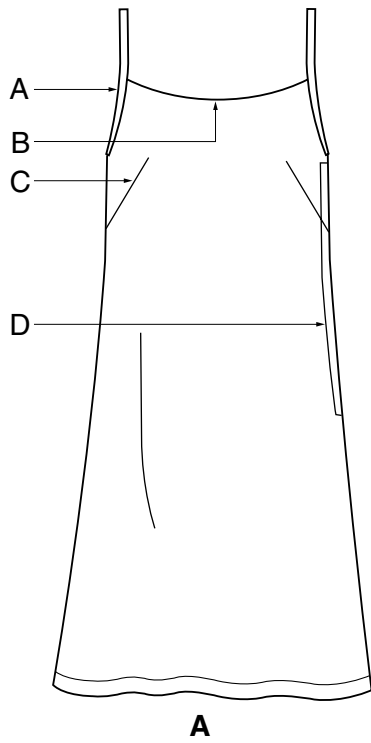
INSERT

READ THESE INSTRUCTIONS FIRST

This insert is for use with Questions 1, 4, 5 and 7.

This document consists of **3** printed pages and **1** blank page.





9196

21 PIECES/PIEZAS

Métrages et instructions de couture en français à 60 °C (température)



JUNIORS' DRESS OR TOP, SKIRT AND JACKET: Semi-fitted dress A or top B has side zipper, armhole binding forming shoulder straps and optional embroidery. Skirt C worn 1" below waistline has side zipper. Semi-fitted jacket D,E with front and back yoke has front buttons, convertible collar and front patch pockets with buttoned flaps. D has three-quarter length sleeves and optional beaded fringe trimming. E has short sleeves.

Fabrics: Synth. Woven Fabrics, Cotton and Cotton Blends, Linen and Linen Blends, Twill, Poplin, Chambray, Gabardine, Batiks, Baby Cord, Jersey, Lightweight Double Knits, A,B,C also in Silks and Silk Types, Challis, Crepe, Crepe Back Satin, Lustrated Silk/Rayons. D,E also in Denim, Cam, Synthetic Leather, Synthetic Suede. Extra fabric needed to match plaids, stripes or one-way design fabrics.

Notions: Thread. A: one 12" zipper. B,C: one 7" zipper. C: hook and eye, one pkg. 3/8" wide cotton twill tape. Note: see Simplicity embroidery motif transfers for optional embroidery. D,E: eight 1/2" buttons. Look for Simplicity notions and *SimplicityFashion Trims™*.

BOOY MEASUREMENTS			
Bust	28	29	30%
Waist	22	23	24
Hip-7" below waist	31	32	33%
Back-neck to waist	13 1/4	14	14 1/4
Sizes	34	36	38
	40	42	44
	46	48	50
	52	54	56
	58	60	62
	64	66	68
	70	72	74
	76	78	80
	82	84	86
	88	90	92
	94	96	98
	100	102	104
	106	108	110
	112	114	116
	118	120	122
	124	126	128
	130	132	134
	136	138	140
	142	144	146
	148	150	152
	154	156	158
	160	162	164
	166	168	170
	172	174	176
	178	180	182
	184	186	188
	190	192	194
	196	198	200
	202	204	206
	208	210	212
	214	216	218
	220	222	224
	226	228	230
	232	234	236
	238	240	242
	244	246	248
	250	252	254
	256	258	260
	262	264	266
	268	270	272
	274	276	278
	280	282	284
	286	288	290
	292	294	296
	298	300	302
	304	306	308
	310	312	314
	316	318	320
	322	324	326
	328	330	332
	334	336	338
	340	342	344
	346	348	350
	352	354	356
	358	360	362
	364	366	368
	370	372	374
	376	378	380
	382	384	386
	388	390	392
	394	396	398
	400	402	404
	406	408	410
	412	414	416
	418	420	422
	424	426	428
	430	432	434
	436	438	440
	442	444	446
	448	450	452
	454	456	458
	460	462	464
	466	468	470
	472	474	476
	478	480	482
	484	486	488
	490	492	494
	496	498	500

*Without nap **with nap ***with or without nap ****see p. 115

ROBE OU HAUT, JUPE ET VESTE POUR JEUNE FILLE
 Tricot Tissus extensibles tissés, Cotons et cotonnades, Toile de lin et tissus semblables, Twill, Poplin, Chambray, Gabardine, Batiks, Piqué très fin, Jersey fin, Jersey doubles légers, A, B, C en soies et tissus jersey, Étamine, Crépe, Crépe de saïn, Soies/rayons pré-travaux aussi. D, E en Denim, Cam, Cuir synthétique, Suedine. Prévoir avantage de tissu pour raccorder les épaules, rayures ou motifs uni-directionnels.

Mercieta Fil, A: une glissière de 30cm. **B,C:** une glissière de 18cm. **C:** une agrafe, un paquet de talonnette de coton croisé de 1cm de large. **D,E:** voyez les découpes de motif de broderie de Simplicity pour la broderie facultative. **D,E:** huit boutons de 1,5cm. Demandez la mercerie Simplicity et les garnitures *SimplicityFashion Trims™*.

VESTIDO O BLUSA, FALDA Y CHABUETA PARA JOVENCITAS
 Tejidos: Telas extensibles tejidas, Algodones y mezclados de algodónes, Tela de lino y tejidos similares, Twill, Poplin, Chambray, Gabardine, Batiks, Pique muy fino, Jerseys finos, Jerseys dobles ligeros, A, B, C en sedas y telas jersey, Estame, Chali, Crepe, Crepe de saïn, Sedas/rayones dobles ligeros. A, B, C en sedas y telas sedosas, Chali, Crepe, Crepe de saïn, Sedas/rayones dobles ligeros. D, E en Denim, Cuero sintético, Gamuza sintética también. Se necesita tela adicional para casar cuadros, rayas o telas estampadas en una dirección.

Mercieta: Hilo, A: una cremallera de 30cm. **B,C:** una cremallera de 18cm. **C:** un corchete, un paquete de gabilón de algodón de 1cm de ancho. Nota: vea los calcos para los motivos de bordado de Simplicity para el bordado facultativo. **D,E:** ocho botones de 1,5cm. Pida la mercería Simplicity y los adornos *SimplicityFashion Trims™*.

MEDIDAS NORMALIZADAS/MEDIDAS DEL CUERPO			
Peñino/Busla	71	73.5	77.5
Talle/Cintura	56	58.5	61
Hanches (18cm ad-desejos de la talla/Caderas (18cm abajo de la cintura))	78.5	81.5	85
Des (encolchere a taille/Espalda (encolchere acentrada))	34.5	35.5	37
Tallas/Tollas	34	36	38
	40	42	44
	46	48	50
	52	54	56
	58	60	62
	64	66	68
	70	72	74
	76	78	80
	82	84	86
	88	90	92
	94	96	98
	100	102	104
	106	108	110
	112	114	116
	118	120	122
	124	126	128
	130	132	134
	136	138	140
	142	144	146
	148	150	152
	154	156	158
	160	162	164
	166	168	170
	172	174	176
	178	180	182
	184	186	188
	190	192	194
	196	198	200
	202	204	206
	208	210	212
	214	216	218
	220	222	224
	226	228	230
	232	234	236
	238	240	242
	244	246	248
	250	252	254
	256	258	260
	262	264	266
	268	270	272
	274	276	278
	280	282	284
	286	288	290
	292	294	296
	298	300	302
	304	306	308
	310	312	314
	316	318	320
	322	324	326
	328	330	332
	334	336	338
	340	342	344
	346	348	350
	352	354	356
	358	360	362
	364	366	368
	370	372	374
	376	378	380
	382	384	386
	388	390	392
	394	396	398
	400	402	404
	406	408	410
	412	414	416
	418	420	422
	424	426	428
	430	432	434
	436	438	440
	442	444	446
	448	450	452
	454	456	458
	460	462	464
	466	468	470
	472	474	476
	478	480	482
	484	486	488
	490	492	494
	496	498	500

*Without nap **with nap ***with or without nap ****see p. 115

