

Centre Number	Candidate Number	Name
---------------	------------------	------

CAMBRIDGE INTERNATIONAL EXAMINATIONS
General Certificate of Education Ordinary Level

FASHION AND FABRICS

6050/01

Paper 1 Theory

May/June 2003

2 hours

Candidates answer Section A on the Question Paper.

Additional Materials: Answer Booklet/Paper
Coloured pencils (not yellow)
Ruler
Small piece of fabric, needle and thread

READ THESE INSTRUCTIONS FIRST

Write your Centre number, candidate number and name on all the work you hand in.

Write in dark blue or black pen.

You may use a soft pencil for any diagrams, or rough working.

Do not use staples, paper clips, highlighters, glue or correction fluid.

The insert is for use with Questions 1, 3 and 7.

You should illustrate your answers by means of clear, bold diagrams wherever possible.

You may use a needle and thread and a small piece of fabric to help in making drawings of stitches. This fabric should **not** be handed in with your answers.

Section A

Answer **all** parts of Question 1 in the spaces provided on the Question Paper.

You are advised to spend no longer than 40 minutes on Section A.

Section B

Answer any **three** questions.

Write your answers on the separate Answer Booklet/Paper provided.

At the end of the examination, fasten all your work securely together.

Enter the numbers of the Section B questions you have answered in the grid below.

The number of marks is given in brackets [] at the end of each question or part question.

For Examiner's Use	
Section A	
Section B	/
Total	

If you have been given a label, look at the details. If any details are incorrect or missing, please fill in your correct details in the space given at the top of this page.

Stick your personal label here, if provided.

This document consists of **8** printed pages and an insert.



Section A

Refer to the Insert (see attached sheet).

Answer **all** questions in the spaces provided.

1 (a) Using at least **two** words in each case, name the style features/items shown on the insert.

- | | |
|----------------|----------------|
| A | H |
| B | I |
| C | J |
| D | K |
| E | L |
| F | M |
| G | |

[13]

(b) It is suggested that **cotton gingham** and **cotton chambray** are suitable fabrics for the top view A. Describe these fabrics below:

(i) Fabric: **cotton gingham**

Structure

Appearance

Feel/handle

Weight[4]

Fabric: **cotton chambray**

Structure

Appearance

Feel/handle

Weight[4]

(ii) Give **four** reasons why a cotton **fibre** is suitable for the top, View A.

-
-
-
-[4]

(iii) Give two reasons why cotton gingham is a suitable **fabric** for the top view A.

.....
.....[2]

(iv) Explain what special care would need to be taken when stitching the side seams of the top in cotton gingham.

.....
.....[2]

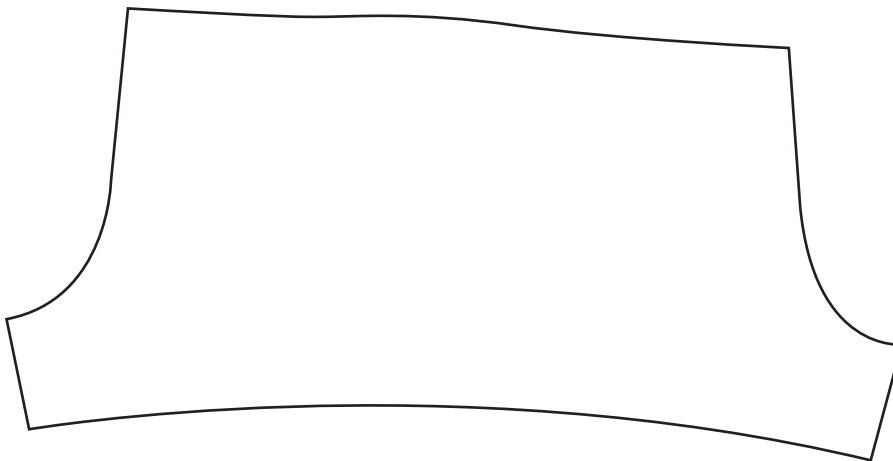
(c) (i) Calculate how much fabric you would need to buy if you were making the top view A in size 10.

width of fabric:
amount:[2]

(ii) Complete the list of notions required to finish the top view A in size 10:

Thread: Type Fibre content Amount
Elastic: Type Width Amount [6]

(d) The diagram below shows the sleeve pattern for the top view A. Draw in **six** pattern markings you would expect to find:

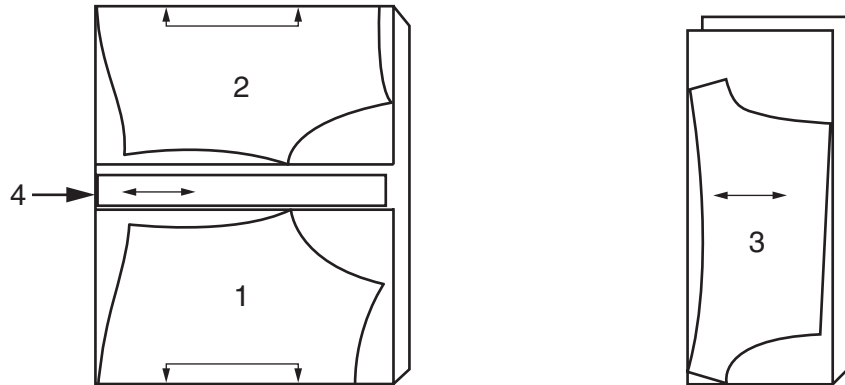


[6]

(e) The layout below is for the top, view A:

VIEW A TOP
USE PIECES 1 2 3 4

FABRIC 44" 45" (115CM)
WITH NAP
SIZES 7 8 10 12 14



(i) Label the folds and selvedges. [3]

(ii) Label the pattern pieces.

- 1
- 2
- 3
- 4 [4]

(iii) Explain why the fabric is folded in two different ways:

-
- [2]

(f) The skirt view C could be made from a plain cotton twill fabric.

(i) Describe cotton twill:

- Structure:
- Appearance:
- Feel/handle:
- Weight: [4]

(ii) Complete the list of notions required to complete the skirt view C:

- Drawstring : Amount Type Width
- Trimming: Amount Type Width [6]

(iii) Complete the table to explain how you would attach the trimming to the skirt by machine:

- Stitch type: Stitch length: Stitch width: [3]

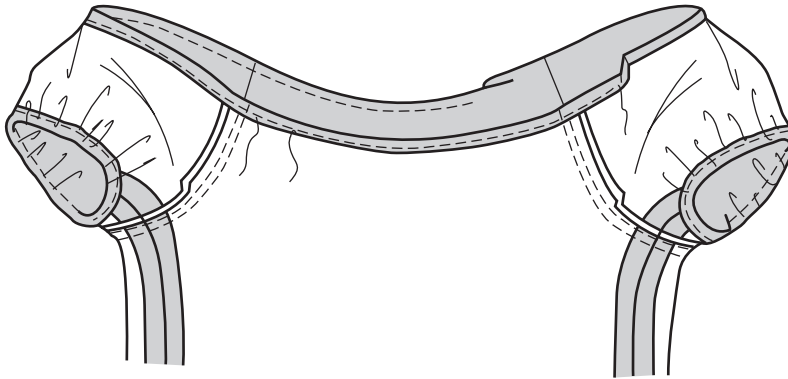
(iv) Using a diagram, show how the finished trimming would look on the skirt:

[3]

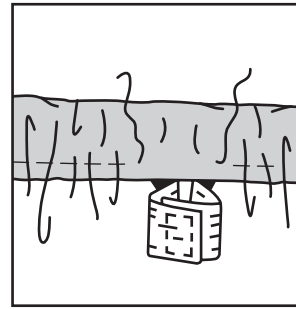
(g) Use the words from the list below to complete the instructions for making the elastic casing and tie for the neck of the top view A.

outer; tack or baste; safety pin; lengthwise; 2 cm;
Machine; 6 mm; elastic; securely; wrong sides;

(i) Press on upper edge to wrong side of top, forming a casing.
Press under on raw edge. Pin, and [3]



- (ii) stitch 3 mm away from both edges of casing, leaving an opening to insert the



[2]

- (iii) Cut the elastic the required length for the neck.
Using a insert elastic through the opening in the casing. Stitch ends of elastic together

Fasten off ends of machine stitching and sew up opening.

[2]

- (iv) To make the tie, press under 1 cm on all ends of the tie.

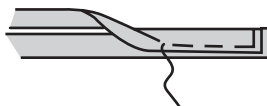


- (v) Fold in half,, with together.

Stitch close to pressed edge and across ends of tie.

[3]

Tie in a bow and stitch to upper edge of front.



Section B

Answer **three** questions from this section.

- 2 (a) State the origin of nylon fibres. [2]
- (b) Describe **six** properties of nylon fibres. [6]
- (c) Draw and describe a care label you would expect to find in a garment made from coloured nylon. [5]
- (d) Name and describe **two** fabric finishes which could be used on nylon fabrics and say why they are useful. [5]
- 3 Refer to the insert sheet.
- Using notes and clearly labelled diagrams, explain how to:
- (a) lengthen the legs of the shorts view E by 10 cm. [5]
- (b) make the crotch seam of the shorts view E. [7]
- (c) turn up and complete a plain hem, 1 cm wide, on the leg of the shorts. [6]
- 4 (a) Name and state a specific use for **six** small pieces of equipment used in garment making. [6 × 2]
- (b) Choose **three** pieces of equipment from (a) and give advice on their care and storage. [3 × 2]
- 5 (a) State with reasons **six** points you need to consider when buying school clothes for children. [6]
- (b) Name one cotton blend fabric and one wool blend fabric suitable for school use and describe them in detail. [8]
- (c) Choose one of the fabrics from (b) and explain how you should remove an ink stain. [4]
- 6 (a) Sketch and label the front and back view of a shirt for a young child. [6]
- (b) Name the fibre and fabric giving **three** reasons for your choice. [4]
- (c) Using labelled diagrams, explain how to work a plain side seam on the garment. Show how the side seam should be neatened. [8]

7 Refer to the insert sheet.

The skirt view C could have a patch pocket on the front.

(a) Draw a pattern piece for a patch pocket, showing the seam allowance, straight grain line and fold line for the facing. [4]

(b) Explain, using labelled diagrams how to:

(i) decorate the pocket by machine [3]

(ii) finish the upper edge [3]

(iii) top stitch the pocket onto the skirt by machine [3]

(iv) strengthen the pocket corners [3]

(v) press the pocket when it is completed. [2]