

**UNIVERSITY OF CAMBRIDGE LOCAL EXAMINATIONS SYNDICATE**

**Joint Examination for the School Certificate  
and General Certificate of Education Ordinary Level**

**FASHION AND FABRICS**

**6050/2**

**PAPER 2 Practical Test**

**OCTOBER/NOVEMBER SESSION 2001**

2 hours 30 minutes

Additional materials:

Fabric  
Pattern  
Pencil

Sewing equipment  
Sewing thread  
Tacking thread

**TIME** 2 hours 30 minutes

---

**This question paper consists of 4 printed pages.**

**Materials provided**

(a) Simplicity pattern **7616** size **BB**.

An illustration of the top, **view C** is on the envelope containing the pattern.

(b) A piece of fabric at least 90 cm wide and 32 cm long.

(c) Sewing thread to match the fabric.

(d) Tacking thread.

For this test you are to prepare the pattern to make up the right half of the shortened top, **View C size 6X**.

For the purpose of this test the pocket is to be attached to the right half of the top and the facing is not to be interfaced.

Before you begin, you should study the question paper carefully, together with the illustration, the pattern and the fabric.

This is a multi-size pattern. The cutting line for **size 6X** is shown by the outer black solid line.

**A seam allowance of 1.5 cm is allowed within the pattern although it is not marked.**

**THE LABEL**

<p><b>Candidate's name</b></p> <p>.....</p> <p><b>Centre No./Index No.</b></p> <p>..... / .....</p>
-----------------------------------------------------------------------------------------------------

## The Test

### 1 Preparation

- (a) Write your name and index number on the envelope provided.
- (b) Select and separate pattern pieces 1, 2, 3, 4, 5 and 6 for the top **View C 6X**.
- (c) On pattern pieces 1, 2 and 3 cut through the lengthening/shortening lines and keep the upper pieces only.

### 2 Cutting out

- (a) Place the pattern pieces on the fabric as shown in the layout. For the purpose of this test place pattern pieces 1 and 2 to the selvedge. On pattern piece 4, the back facing, use the centre fold line as the straight grain.
- (b) Cut out the right half of the top, including the pocket.
- (c) Transfer the pattern markings which are needed for making up the test.

### 3 Making up

*It is important that pressing is done at all stages.*

Make up the right half of the top as follows:

#### (a) Pocket

- (i) Make up the pocket and place it in position on the front.
- (ii) Edge stitch the pocket and strengthen the top corners.
- (iii) Secure the ends of the machine stitching by hand.

#### (b) Shoulder seam

Work the shoulder seam.

#### (c) Neck facing

- (i) Join the back neck facing to the front facing.
- (ii) Neaten the free edge of the facing.
- (iii) Use the prepared facing to neaten the front and neck edge of the top.

#### (d) Underarm seam

Work the underarm seam.

#### (e) Sleeve

- (i) Work ease stitching between the notches around the head of the sleeve.
- (ii) Work the sleeve seam, but **do not** neaten or trim this seam.

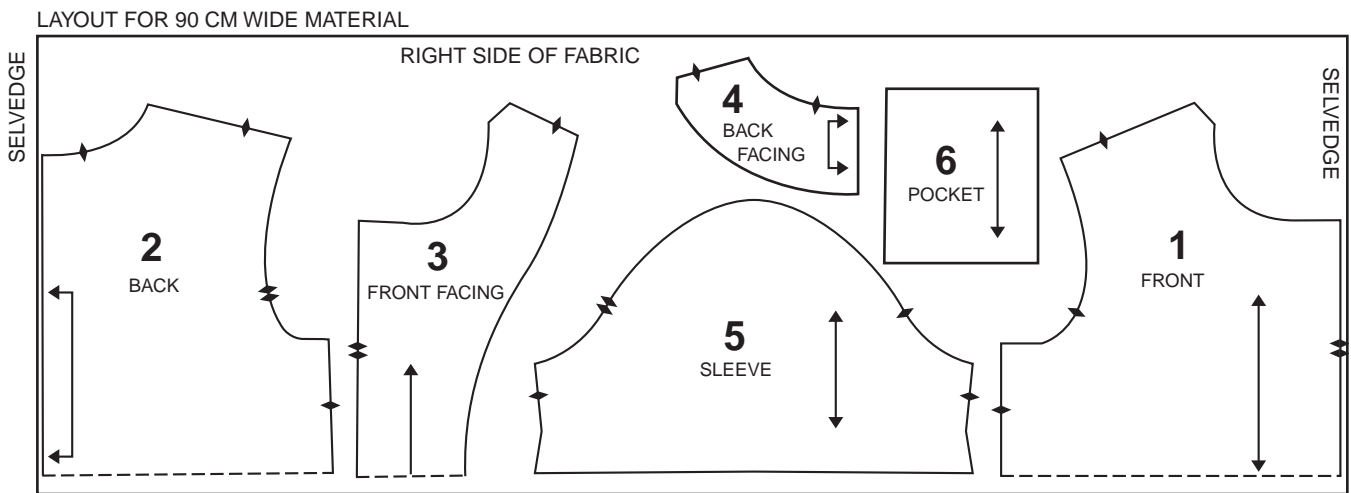
**(f) Setting in the sleeve**

- (i) Set the sleeve into the armhole matching the notches and balance marks.
- (ii) **Do not** neaten or trim this seam.

**(g) Sleeve hem**

- (i) Turn up the sleeve hem (3.2 cm is allowed).
- (ii) Tack the hem in position. **Do not remove this tacking at the end of the test.**

At the end of the examination remove the needle and unnecessary pins from your work. Write your name and index number on the label provided. Cut out the label and tack it to your test. The label should not cover any stitching and should be on **single** fabric. Press your work, fold it carefully and place it in the envelope provided. Do not include the scraps of fabric which you have left over.



For the purpose of this test place pattern pieces **1** and **2** to the selvedge.  
Use the fold line on pattern piece **4** as the straight grain line