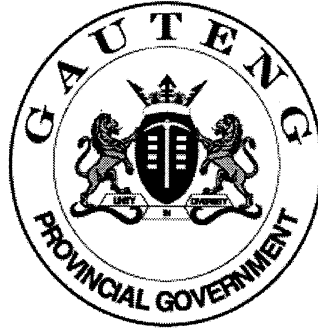


SENIOR CERTIFICATE EXAMINATION



FEBRUARY / MARCH

2006

WOODWORK

SG

First Paper

Drawing

720-2/1 E

WOODWORK SG: Paper 1

8 pages



720 2 1E

SG

X05



COPYRIGHT RESERVED
APPROVED BY UMALUSI



GAUTENG DEPARTMENT OF EDUCATION
SENIOR CERTIFICATE EXAMINATION

WOODWORK SG
(First Paper: Drawing)

TIME: 3 hours

MARKS: 100

REQUIREMENTS:

- Drawing Answer Book (720-2X) containing three A3 answer sheets
- Drawing instruments

INSTRUCTIONS:

- The examination paper consists of FOUR questions.
 - All the questions are COMPULSORY.
 - On completion of the examination, staple your answer sheets in numerical order in the top left corner.
 - Your examination number must be entered in the bottom left-hand corner of each answer sheet.
 - Use your own judgement where dimensions and/or details have been omitted.
-
-

QUESTION 1

Figure 1 on page 6 of this examination paper shows an isometric view of a **napkin ring**. The triangular hole is placed in the middle of the hexagonal prism.

- 1.1 Draw, to a scale of 1:1, in **third-angle orthographic projection**, the front view, top view and left view in the space provided on answer sheet 1.
- 1.2 Show the following measurements on the front view:
 - (a) The height of the hexagonal prism
 - (b) The height of the triangular hole
 - (c) The length of the bottom side of the hexagon
- 1.3 Show the projection symbol. [14]

QUESTION 2

Figure 2 on answer sheet 1 shows, in first-angle orthographic projection, the front view and top view of a **napkin holder**.

On answer sheet 1, project, measure and draw an **auxiliary view** as seen in the direction of arrow **P** on the auxiliary vertical plane. [16]

QUESTION 3

Figure 3 on page 7 of this examination paper shows the front view, top view and left view of a **joint construction** in first-angle orthographic projection.

- 3.1 Draw, on answer sheet 2, to a scale of 2:1, an **isometric view** of the parts **A**, **B** and **C** apart from each other but in a position to be joined on the isometric axes.
 - Show the hidden details on part **B**.
 - The parts must not overlap.
 - Use corner **D** for the placing of part **B**. See answer sheet 2. [35]

QUESTION 4

Figure 4 on page 8 of this examination paper shows an isometric view of a **cabinet**.

Dimensions and additional information:

- **The mirror frame:**
 - The frame is 40 mm wide and 20 mm thick.
 - The mirror is 5 mm thick and fits into a 15 mm deep rebate and has to be fitted with a 10 mm x 10 mm beading.
 - There is no panel at the back of the mirror.
- **The cabinet body:**
 - The thickness of the wood is 20 mm throughout except for the back panel which is 5 mm thick.
 - The back panel fits into a rebate and is not visible from the sides.
 - The top has an overhang of 25 mm on the front and sides.
- **The drawers:**
 - The left hand drawer is removed to show detail.
 - The depth of the drawers equals the depth of the cabinet.
 - The drawer fronts are 20 mm thick.
 - The sides and backs are 15 mm thick.
 - The drawer backs are 20 mm lower than the sides.
 - The bottoms are 5 mm thick and fit in a groove that runs the whole length of the drawer.
- **The doors:**
 - The rails and stiles are 60 mm wide and 20 mm thick.
 - The plywood panels are 5 mm thick and fit into a 10 mm deep groove.

WOODWORK SG (First Paper)	720-2/1 L	5
--------------------------------------	------------------	----------

To a scale of 1:5, draw in first-angle orthographic projection on answer sheet 3,

4.1 the front view.

4.2 the sectional left view on cutting plane YY, with the drawer and door in the closed position.

[35]

TOTAL: 100

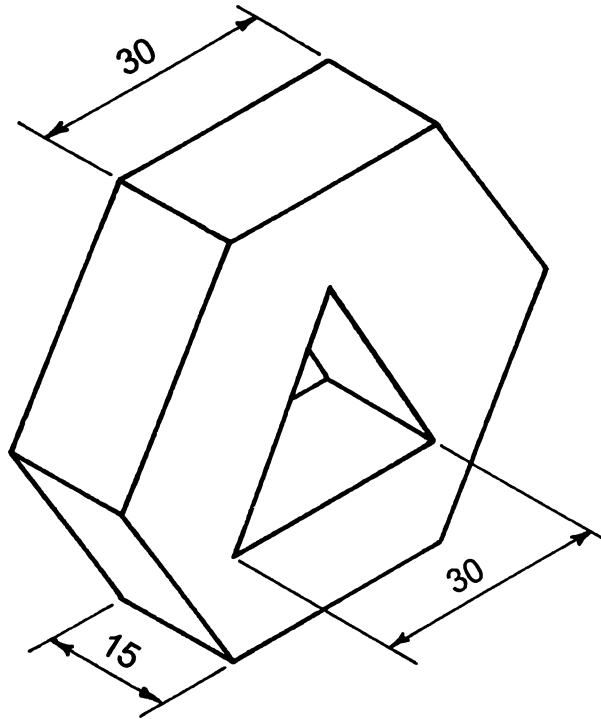
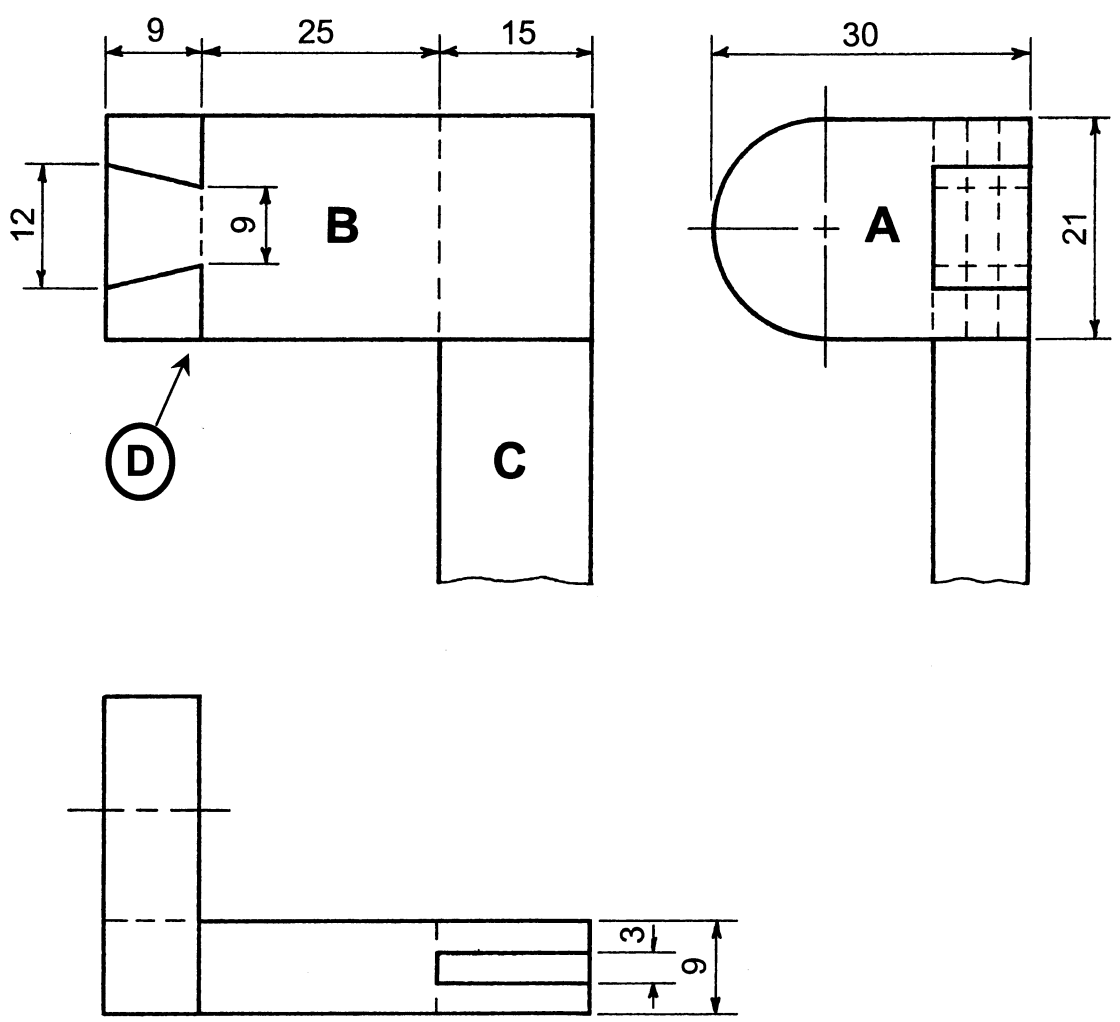
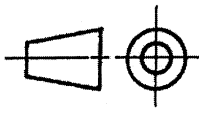


FIG. 1

NAPKIN RING
SERVETRING



<p>FIG. 3</p>	<p>JOINTS VOEË</p>	
---------------	------------------------	---

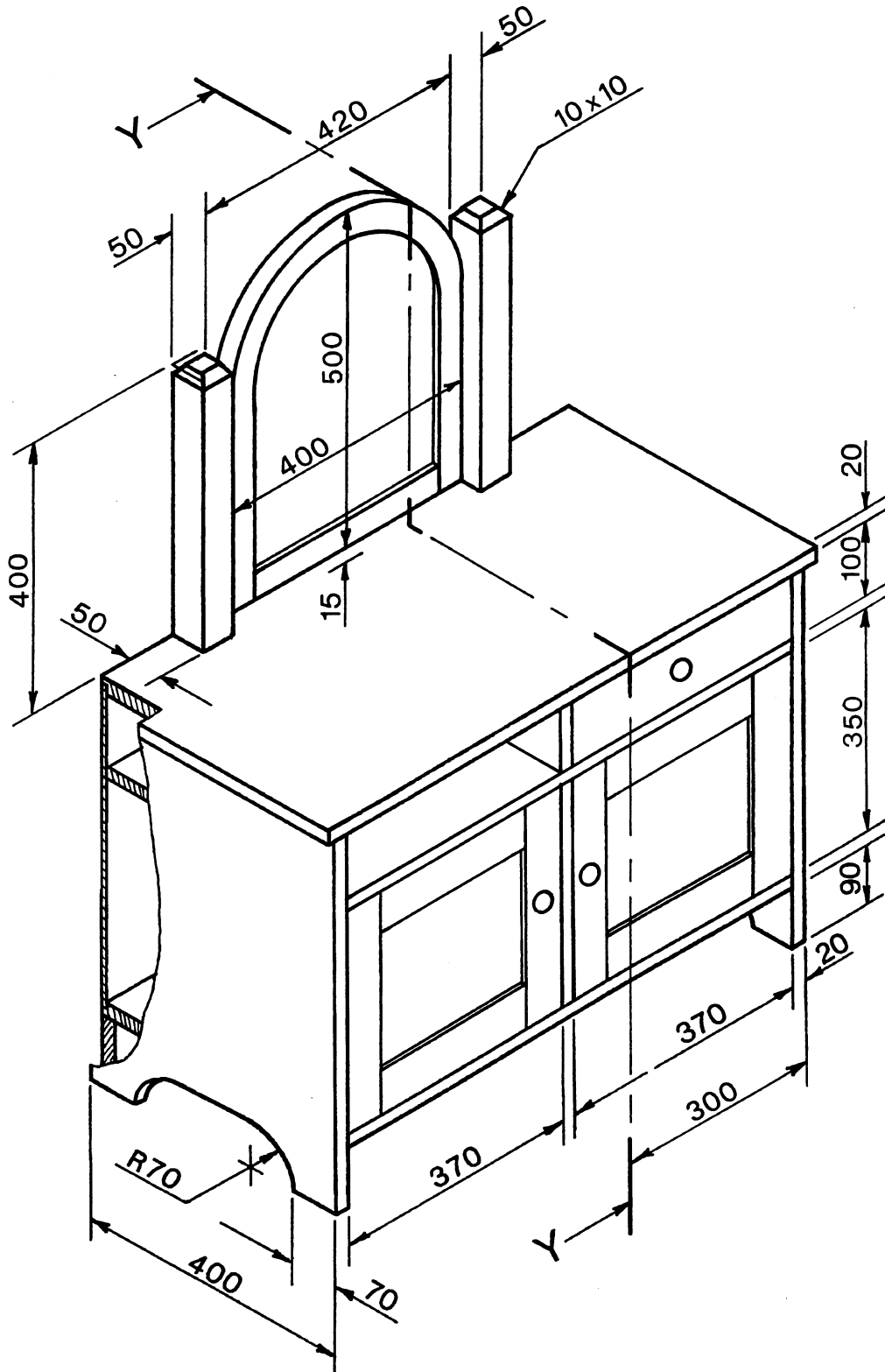


FIG. 4

CABINET
KABINET