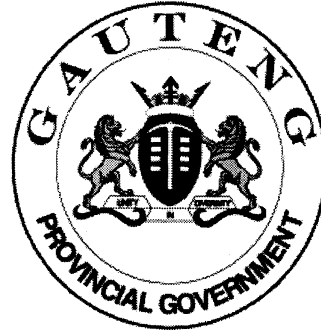


**SENIOR CERTIFICATE
EXAMINATION
SENIORSERTIFIKAAT-EKSAMEN**



**FEBRUARY / MARCH
FEBRUARIE / MAART**

2007

**TECHNICAL DRAWING
TEGNIесе TEKENE**

Second Paper: Drawing

Tweede Vraestel : Tekene

X05



TECHNICAL DRAWING/TEGNIесе TEKENE HG
Paper 2/Vraestel 2



711 1 2 HG

HG

711-1/2

Cover + 6 pages
Voorblad + 6 bladsye

COPYRIGHT RESERVED / KOPIEREG VOORBEHOU
APPROVED BY UMALUSI / GOEDGEKEUR DEUR UMALUSI



QUESTION 1.1

ANSWER THIS QUESTION ON ANSWER SHEET 1.

Figure 1.1 shows the front and top views of a block with a tapped hole in it.

Complete the sectioned front view by drawing in a M30 tapped hole if the hole depth is 50 mm.	6		
TOTAL	6		

VRAAG 1.1

BEANTWOORD HIERDIE VRAAG OP ANTWOORDVEL 1.

Figuur 1.1 toon die voor- en boaansigte van 'n blok met 'n tapgat daarin.

Voltooi die deursnee-vooraansig deur 'n M30-tapgat in te teken as die gat 50 mm diep is.	6		
TOTAAL	6		

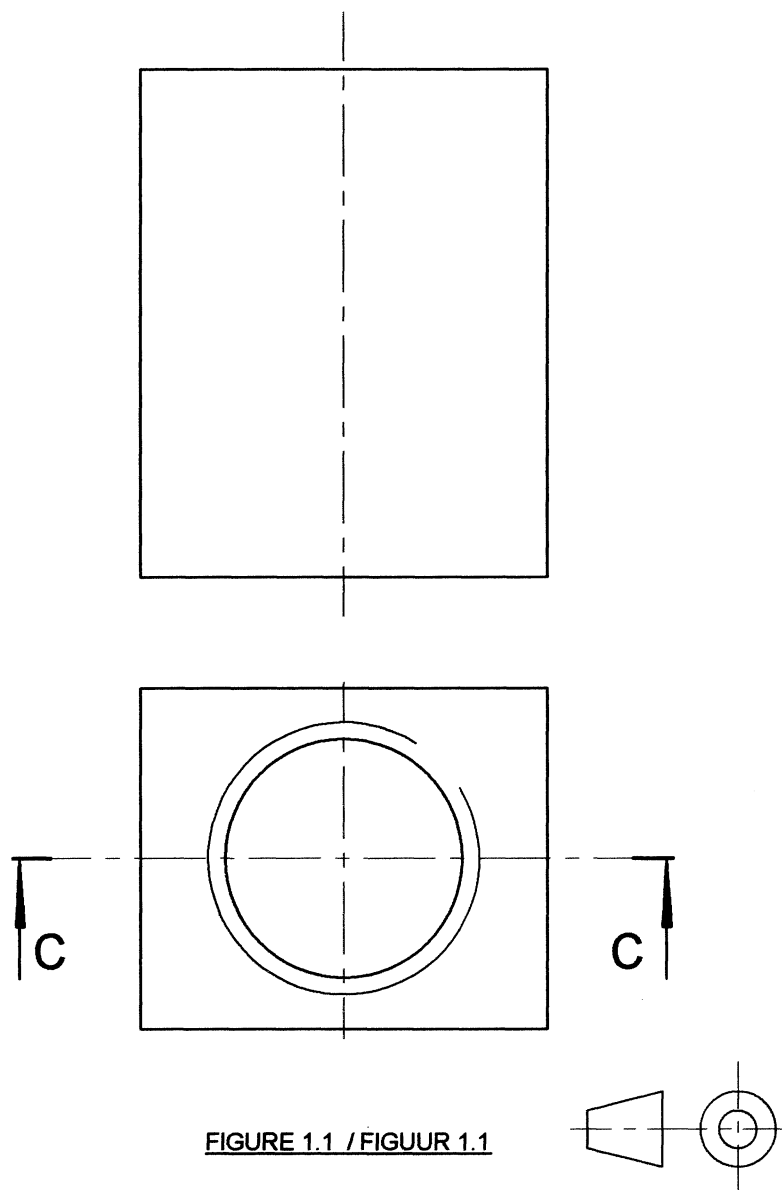


FIGURE 1.1 / FIGUUR 1.1

QUESTION 1.2

ANSWER THIS QUESTION ON ANSWER SHEET 1.

Figure 1.2 shows the front and top views of a casting.

Determine freehand the right view of the casting. Show hidden detail.	8		
TOTAL	8		

VRAAG 1.2

BEANTWOORD DIE VRAAG OP ANTWOORDVEL 1.

Figuur 1.2 toon die voor- en boaansigte van 'n gietstuk.

Bepaal vryhand die regteraansig van die gietstuk. Toon verborge detail.	8		
TOTAAL	8		

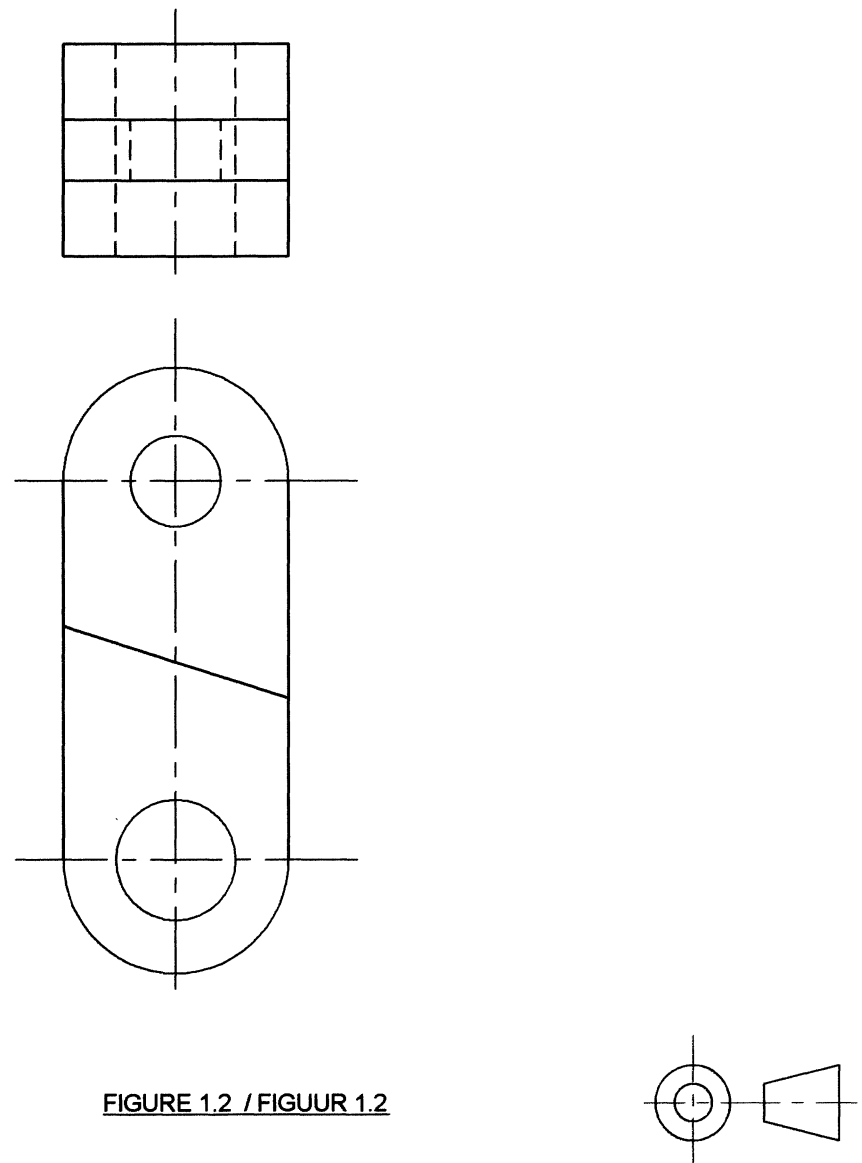


FIGURE 1.2 / FIGUUR 1.2

TECHNICAL DRAWING 711-1/2 Z HIGHER GRADE

TEGNIËSE TEKENE 711-1/2 Z HOËR GRAAD

QUESTION 1.3

ANSWER THIS QUESTION ON ANSWER SHEET 1.

Figure 1.3 shows the front and top views of a casting.

Project the auxiliary sectioned view on cutting plane F-F.	11		
TOTAL	11		

QUESTION 1.3

BEANTWOORD HIERDIE VRAAG OP ANTWOORDVEL 1.

Figuur 1.3 toon die voor- en boaansigte van 'n gietstuk.

Projekteer die deursnee-hulpaansig op snyvlak F-F.	11		
TOTAAL	11		

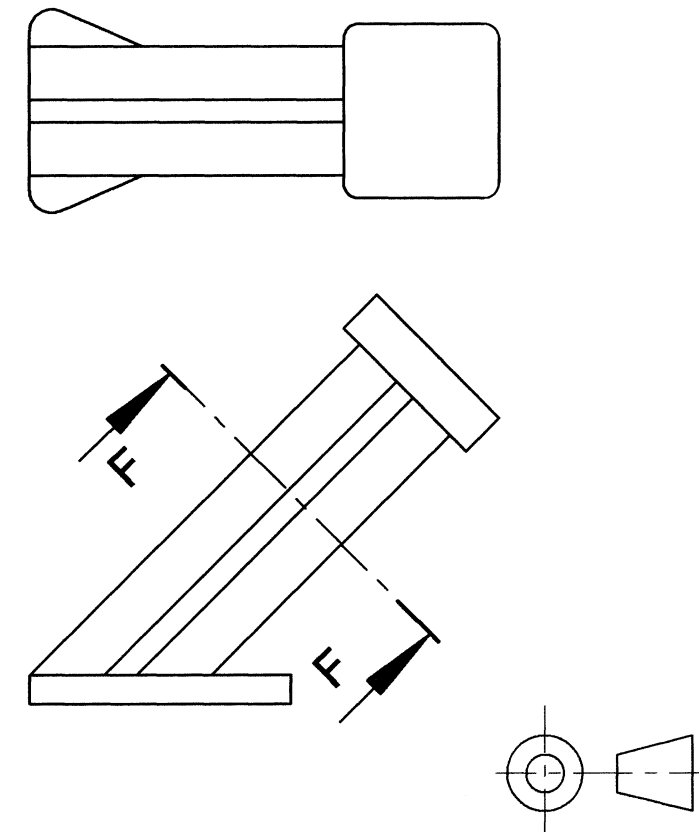


FIGURE 1.3 / FIGUUR 1.3

EXAMINATION NUMBER / EKSAMENNUMMER

A/B									
-----	--	--	--	--	--	--	--	--	--

QUESTION 1 / VRAAG 1

ANSWER SHEET 1

ANTWOORDVEL 1

QUESTION 1 / VRAAG 1

QUESTION 1.1 / VRAAG 1.1	6		
QUESTION 1.2 / VRAAG 1.2	8		
QUESTION 1.3 / VRAAG 1.3	11		
TOTAL / TOTAAL	25		

PP = PICTURE PLANE

PV = PRENTVLAK

HL = HORIZON LINE

HL = HORIZONLYN

GL = GROUND LINE

GL = GRONDLYN

SP = STATION POINT

SP = STAANPUNT

TECHNICAL DRAWING 711-1/2 Z HIGHER GRADE

TEGNIËSE TEKENE 711-1/2 Z HOËR GRAAD

QUESTION 2

By making use of the given diagram on answer sheet 2, draw a two-point perspective drawing of the storage building.

Do not show hidden detail.

Presentation

TOTAL	40		
-------	----	--	--

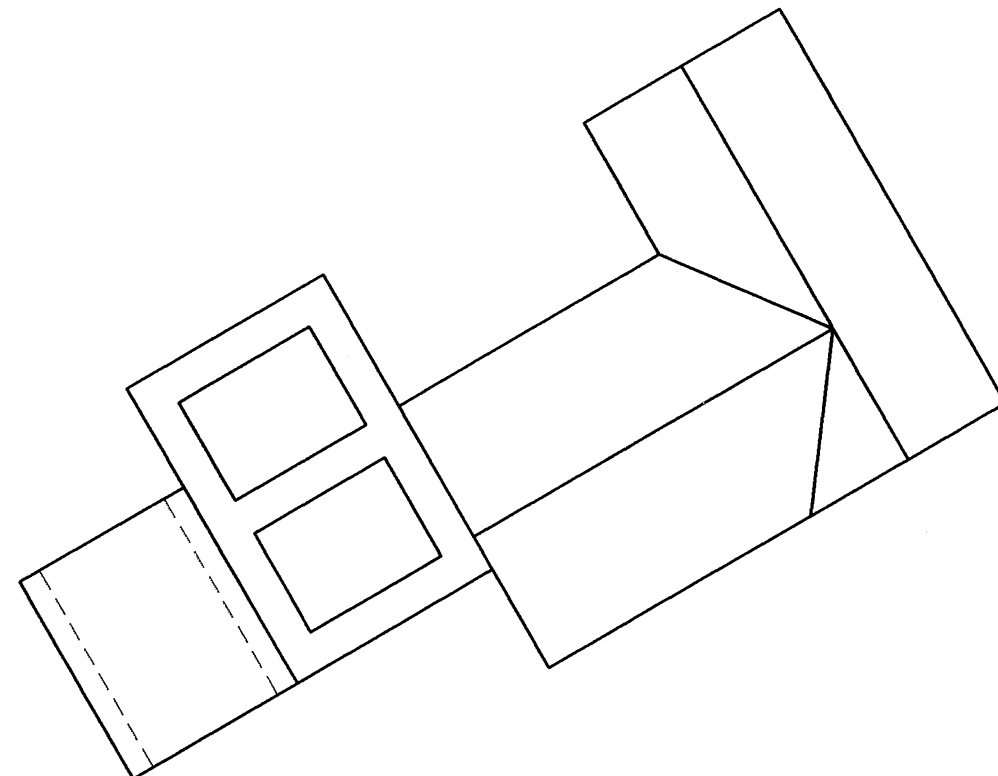
VRAAG 2

Deur gebruik te maak van die gegewe diagram op antwoordvel 2 teken 'n tweepuntperspektief-tekening van 'n pakhuis.

Moet nie versteekte detail toon nie.

Aanbieding

TOTAAL	40		
--------	----	--	--



PP / PV

HL

GL

SP

EXAMINATION NUMBER / EKSAMENNUMMER

<input type="checkbox"/>	<input type="checkbox"/>	<input type="checkbox"/>	<input type="checkbox"/>	<input type="checkbox"/>	<input type="checkbox"/>	<input type="checkbox"/>	<input type="checkbox"/>	<input type="checkbox"/>	<input type="checkbox"/>
--------------------------	--------------------------	--------------------------	--------------------------	--------------------------	--------------------------	--------------------------	--------------------------	--------------------------	--------------------------

QUESTION 2 / VRAAG 2

ANSWER SHEET 2

ANTWOORDVEL 2

QUESTION 3

Figure 3 shows the views of a COUPLING in First-angle Orthographic Projection.

Use a scale 1:1 to produce a sectioned isometric drawing of the coupling on the cutting plane D-D.

Do not show hidden detail.

Start at the given point K.

TOTAL	40		
-------	----	--	--

VRAAG 3

Figuur 3 toon die aansigte van 'n KOPPELING in Eerstehoekse Ortografiese Projeksie.

Gebruik 'n skaal 1:1 om 'n deursnee- isometriese tekening van die koppeling te teken op die snyvlak D-D

Moet nie verborge detail toon nie.

Begin by die gegewe punt K.

TOTAAL	40		
--------	----	--	--

TECHNICAL DRAWING 711-1/2 Z HIGHER GRADE

TEGNIÛSE TEKENE 711-1/2 Z HOÛER GRAAD

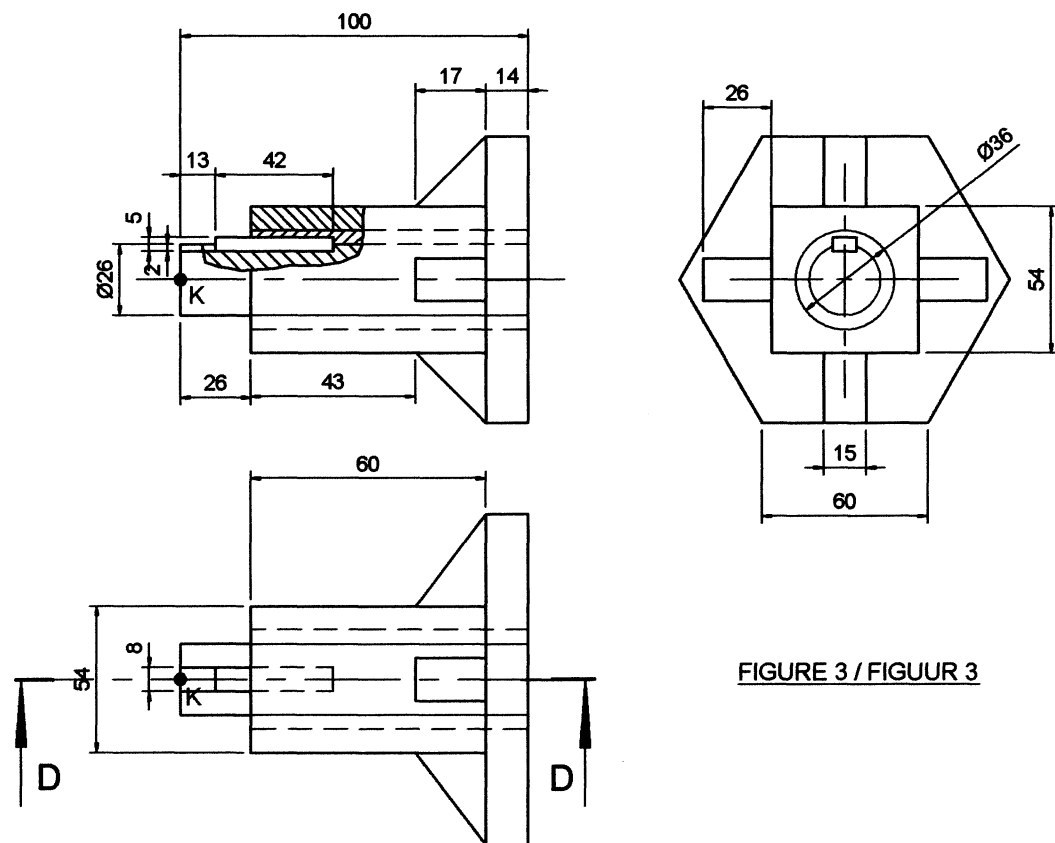
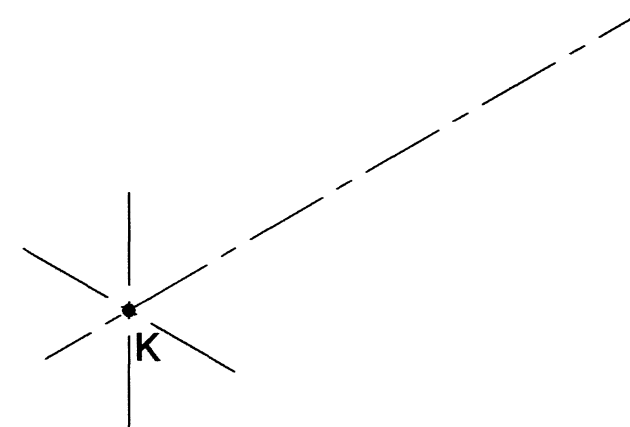


FIGURE 3 / FIGUUR 3



EXAMINATION NUMBER / EKSAMENNOMMER

A/B									
-----	--	--	--	--	--	--	--	--	--

QUESTION 3 / VRAAG 3

ANSWER SHEET 3

ANTWOORDVEL 3

QUESTION 4

ANSWER THIS QUESTION ON ANSWER SHEET 4.

DIAGRAM SHEET for question 4 shows the components of a STEADY in first-angle orthographic projection as well as a key to how the components are to be assembled.

- 4.1 Draw a half-sectional front view of the assembled STEADY on cutting plane G-G, using a scale of 1:1, with the right half in section.
 Make use of the given centre lines.
 Show all hidden detail in the left half.
- 4.2 Insert 5 dimensions on your drawing.
- 4.3 Print a title and scale.

[95]

VRAAG 4

BEANTWOORD HIERDIE VRAAG OP ANTWOORDVEL 4.

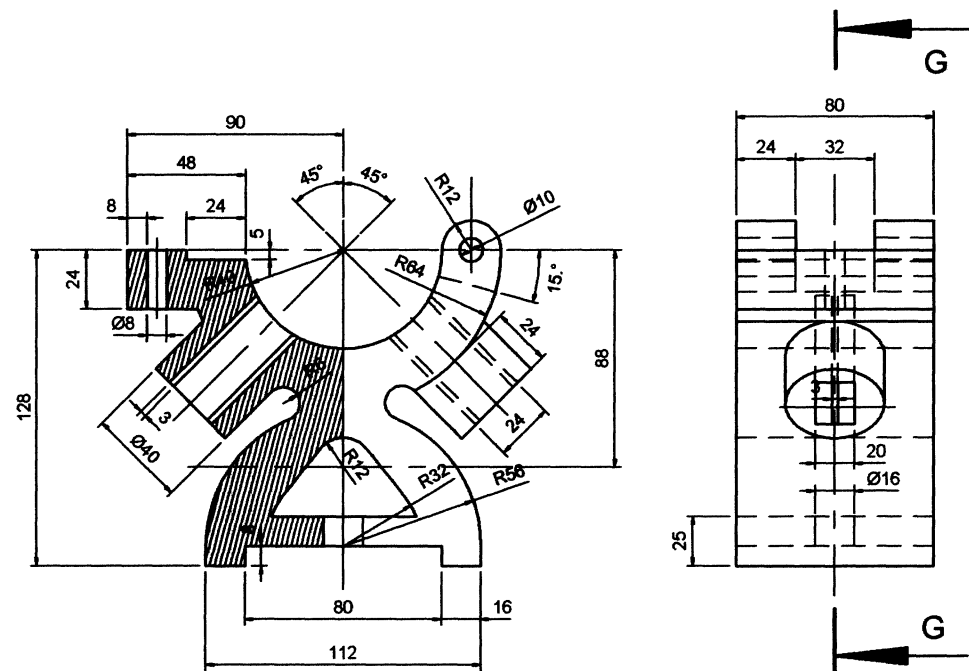
DIAGRAMVEL vir vraag 4 toon die komponente van 'n STEUNSTUT in eerstehoekse ortografiese projeksie, asook 'n sleutel van hoe die komponente saamgestel word.

- 4.1 Teken volgens 'n skaal van 1:1, 'n halfdeursnee-vooraansig van die saamgestelde STEUNSTUT op snyvlak G-G met die regterhelfte in deursnee.
 Maak gebruik van die gegewe hartlyne.
 Toon alle verborge detail in die linkershelfte.
- 4.2 Voeg 5 afmetings by jou tekening.
- 4.3 Drukskrif 'n titel en skaal.

[95]

TECHNICAL DRAWING 711-1/2 Z HG

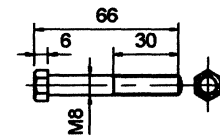
TEGNIесе TEKENE 711-1/2 Z HG



SUPPORT (1-OFF)

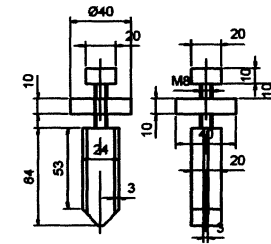
STUT (1-VAN)

(A)



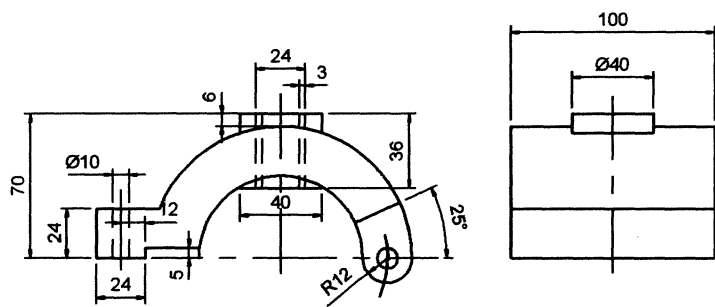
M8 BOLT AND NUT (1-OFF)
M8-BOUT EN -MOER (1-VAN)

(C)



GUIDEPIN (2-OFF)
LEIPEN (2-VAN)

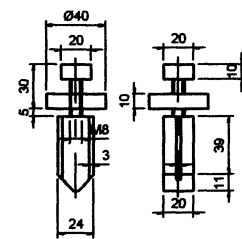
(D)



COVER (1-OFF)

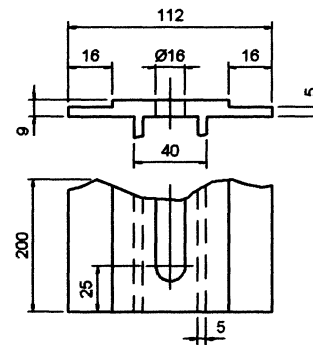
DEKSEL (1-VAN)

(B)



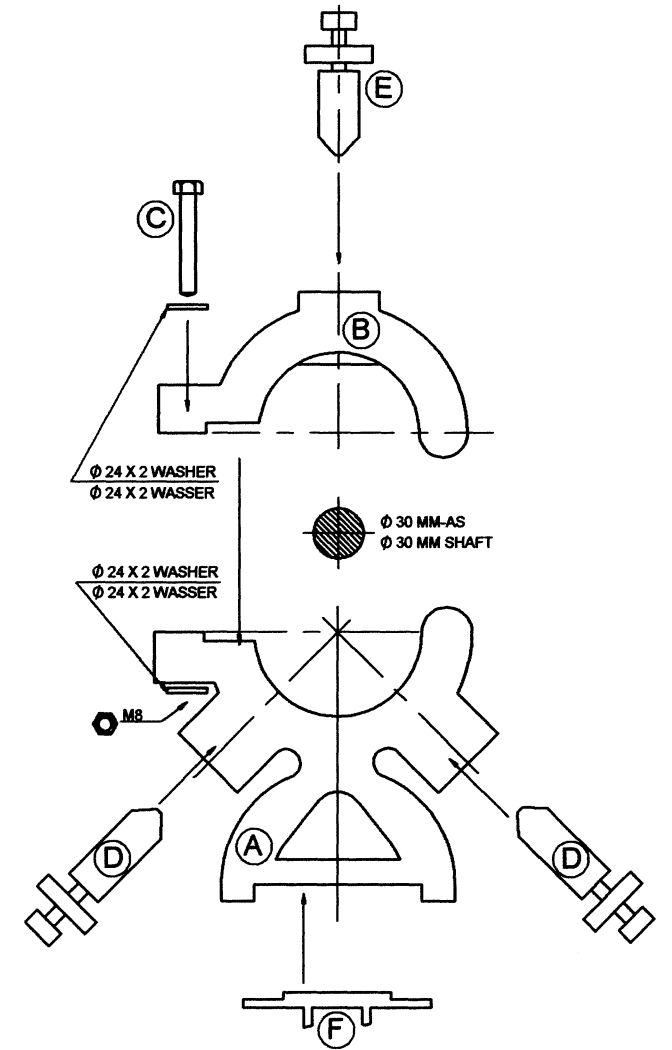
GUIDEPIN (1-OFF)
LEIPEN (1-VAN)

(E)



SLIDE (1-OFF)
GLYSTUK (2-VAN)

(F)



ASSEMBLY OF STEADY

SAMESTELLING VAN STEUNSTUK

EXAMINATION NUMBER / EKSAMENNUMMER

A/B [][][][][][][][][][][][][][][][]

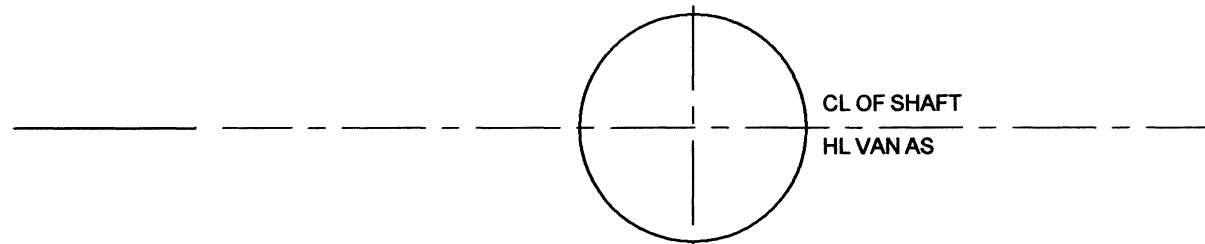
DIAGRAM SHEET FOR QUESTION 4
DIAGRAMVEL VIR VRAAG 4

TECHNICAL DRAWING 711-1/2 Z HG

TEGNIесе TEKENE 711-1/2 Z HG

MARK ALLOCATION / PUNTETOEKENNING

SUPPORT / STUT	17		
SECTIONING / ARSERING	4		
COVER / DEKSEL	10		
SECTIONING / ARSERING	2		
GUIDEPIN E / LEIPEN E	11		
SECTIONING / ARSERING	2		
GUIDEPIN D (1) / LEIPEN D (1)	11		
SECTIONING / ARSERING	2		
GUIDEPIN D (2) / LEIPEN D (2)	11		
BOLT & NUT / BOUT & MOER	8		
SLIDE / GLYSTUK	3		
SECTIONING / ARSERING	1		
SECTIONING SHAFT / ARSERING-AS	1		
SUBTOTAL / SUBTOTAAL	83		
DIMENSIONS / AFMETINGS	3		
TITLE & SCALE / TITEL & SKAAL	1		
PRESENTATION / AANBIEDING	4		
ASSEMBLY / SAMESTELLING	4		
SUBTOTAL / SUBTOTAAL	12		
TOTAL / TOTAAL	95		



EXAMINATION NUMBER / EKSAMENNOMMER

QUESTION 4 / VRAAG 4

ANSWER SHEET 4

ANTWOORDVEL 4

END / EINDE