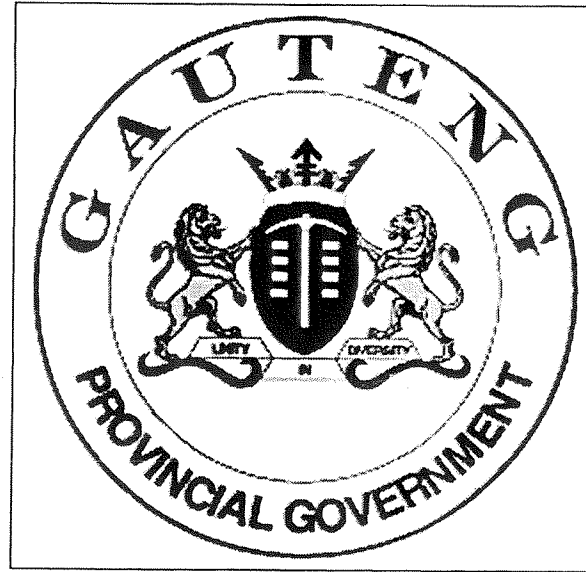


GAUTENG DEPARTMENT OF EDUCATION

GAUTENGSE DEPARTEMENT VAN ONDERWYS



TECHNICAL DRAWING : HIGHER GRADE

TEGNIËSE TEKENE : HOËR GRAAD

SENIOR CERTIFICATE EXAMINATION

SENIORSERTIFIKAAT-EKSAMEN

711 - 1 / 2 Z

**QUESTION 1.1**

ANSWER THIS QUESTION ON ANSWER SHEET 1.

Figure 1.1 shows the front and top views of a block with a tapped hole in it.

Complete the sectioned front view by drawing in a M30-tapped hole if the hole depth is 50 mm.

6

TOTAL 6

**VRAAG 1.1**

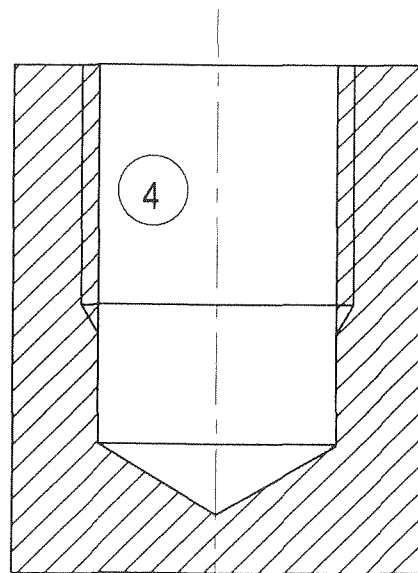
BEANTWOORD HIERDIE VRAAG OP ANTWOORDVEL 1.

Figuur 1.1 toon die voor- en boansigte van 'n blok met 'n tapgat daarin.

Voltooi die deursnee-vooraansig deur 'n M30 tapgat in te teken as die gat 50 mm diep is.

6

TOTAAL 6



SECTIONING = 2  
ARSERING = 2

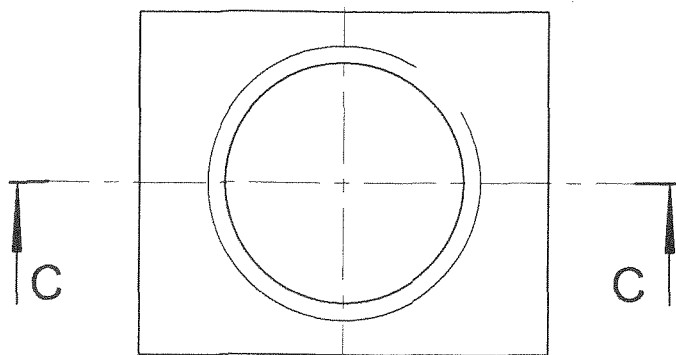
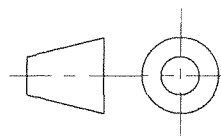


FIGURE 1.1 / FIGUUR 1.1



**QUESTION 1.2**

ANSWER THIS QUESTION ON ANSWER SHEET 1.

Figure 1.2 shows the front and top views of a casting.

Determine freehand the right view of the casting. Show hidden detail.

8

TOTAL 8

**VRAAG 1.2**

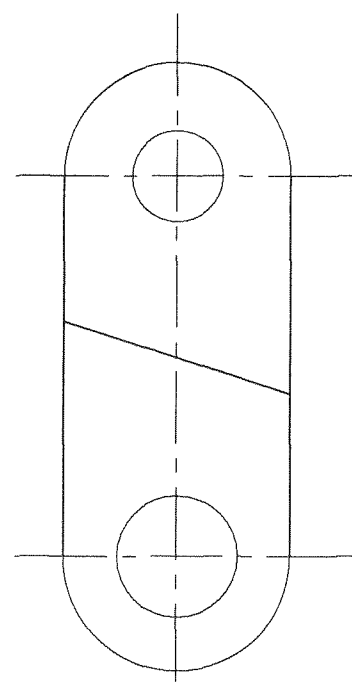
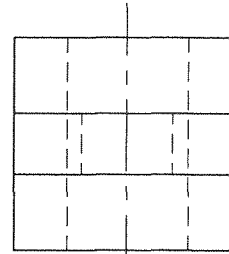
BEANTWOORD HIERDIE VRAAG OP ANTWOORDVEL 1.

Figuur 1.2 toon die voor- en boansigte van 'n gietstuk.

Bepaal vryhand die regteraansig van die gietstuk. Toon verborge detail.

8

TOTAAL 8



PRESENTATION = 1  
AANBIEDING = 1

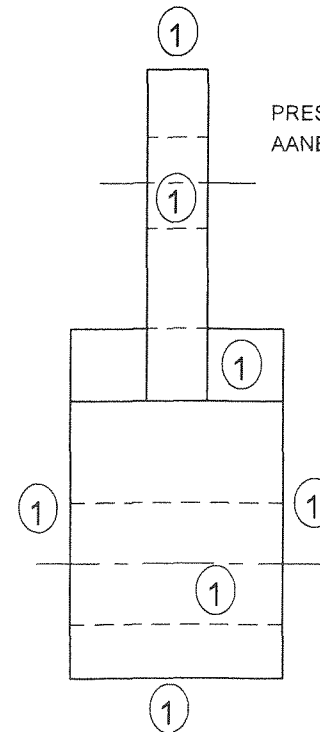
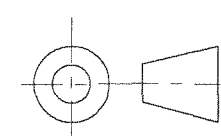


FIGURE 1.2 / FIGUUR 1.2



TECHNICAL DRAWING 711-1/2 Z HIGHER GRADE

TEGNIÛSE TEKENE 711-1/2 Z HOÛER GRAAD

**QUESTION 1.3**

ANSWER THIS QUESTION ON ANSWER SHEET 1.

Figure 1.3 shows the front and top views of a casting.

Project the auxiliary sectioned view on cutting plane F-F.

11

TOTAL 11

**QUESTION 1.3**

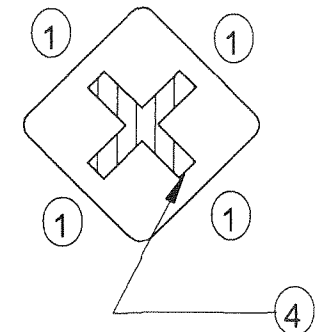
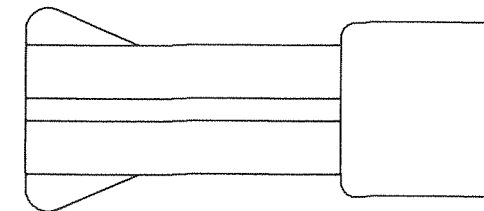
BEANTWOORD HIERDIE VRAAG OP ANTWOORDVEL 1.

Figuur 1.3 toon die voor- en boansigte van 'n gietstuk.

Projekteer die deursnee-hulpaansig op snyvlak F-F.

11

TOTAAL 11



SECTIONING = 2  
ARSERING = 2  
PRESENTATION = 1  
AANBIEDING = 1

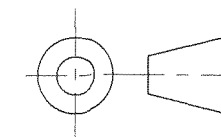
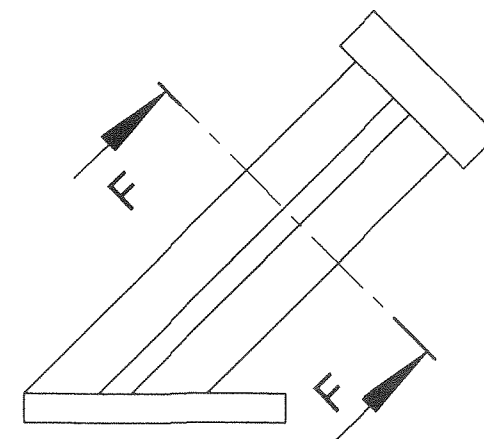


FIGURE 1.3 / FIGUUR 1.3

EXAMINATION NUMBER / EKSAMENNOMMER

A/B									
-----	--	--	--	--	--	--	--	--	--

**QUESTION 1 / VRAAG 1**

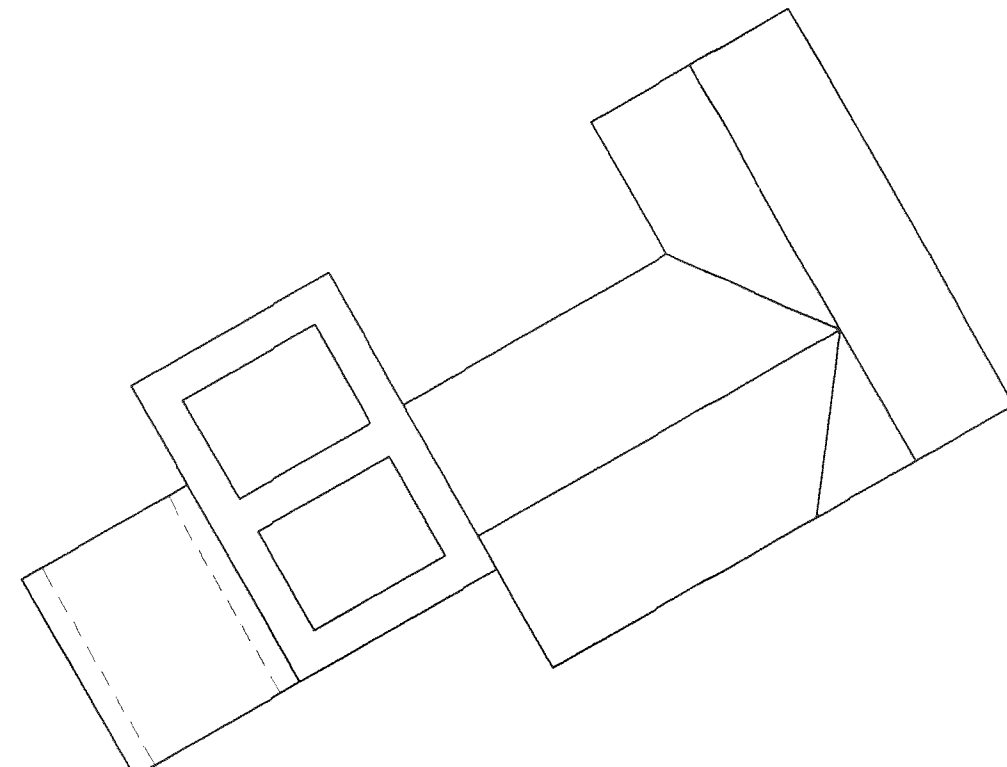
ANSWER SHEET 1

ANTWOORDVEL 1

**QUESTION 1 / VRAAG 1**

QUESTION 1.1 / VRAAG 1.1	6		
QUESTION 1.2 / VRAAG 1.2	8		
QUESTION 1.3 / VRAAG 1.3	11		
TOTAL / TOTAAL	25		

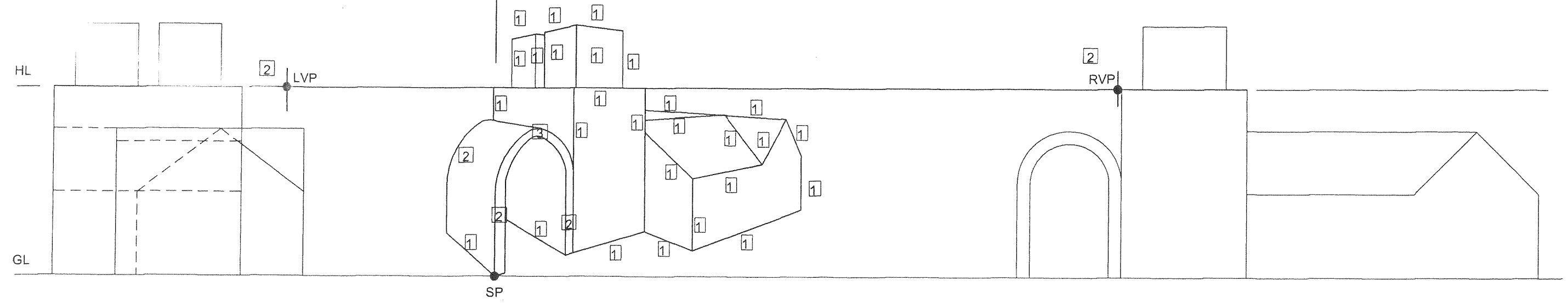
PP = PICTURE PLANE      PV = PRENTVLAK  
 HL = HORIZON LINE      HL = HORISONLYN  
 GL = GROUND LINE      GL = GRONDLYN  
 SP = STATION POINT      SP = STAANPUNT



QUESTION 2				
By making use of the given diagram on answer sheet 2, draw a two-point perspective drawing of the storage building.		37		
Do not show hidden detail.				
Presentation		3		
TOTAL		40		

QUESTION 2				
Deur gebruik te maak van die gegewe diagram op antwoordvel 2 teken 'n tweepuntperspektief-tekening van 'n pakhuis.		37		
Moet nie verborge detail toon nie.				
Aanbieding		3		
TOTAAL		40		

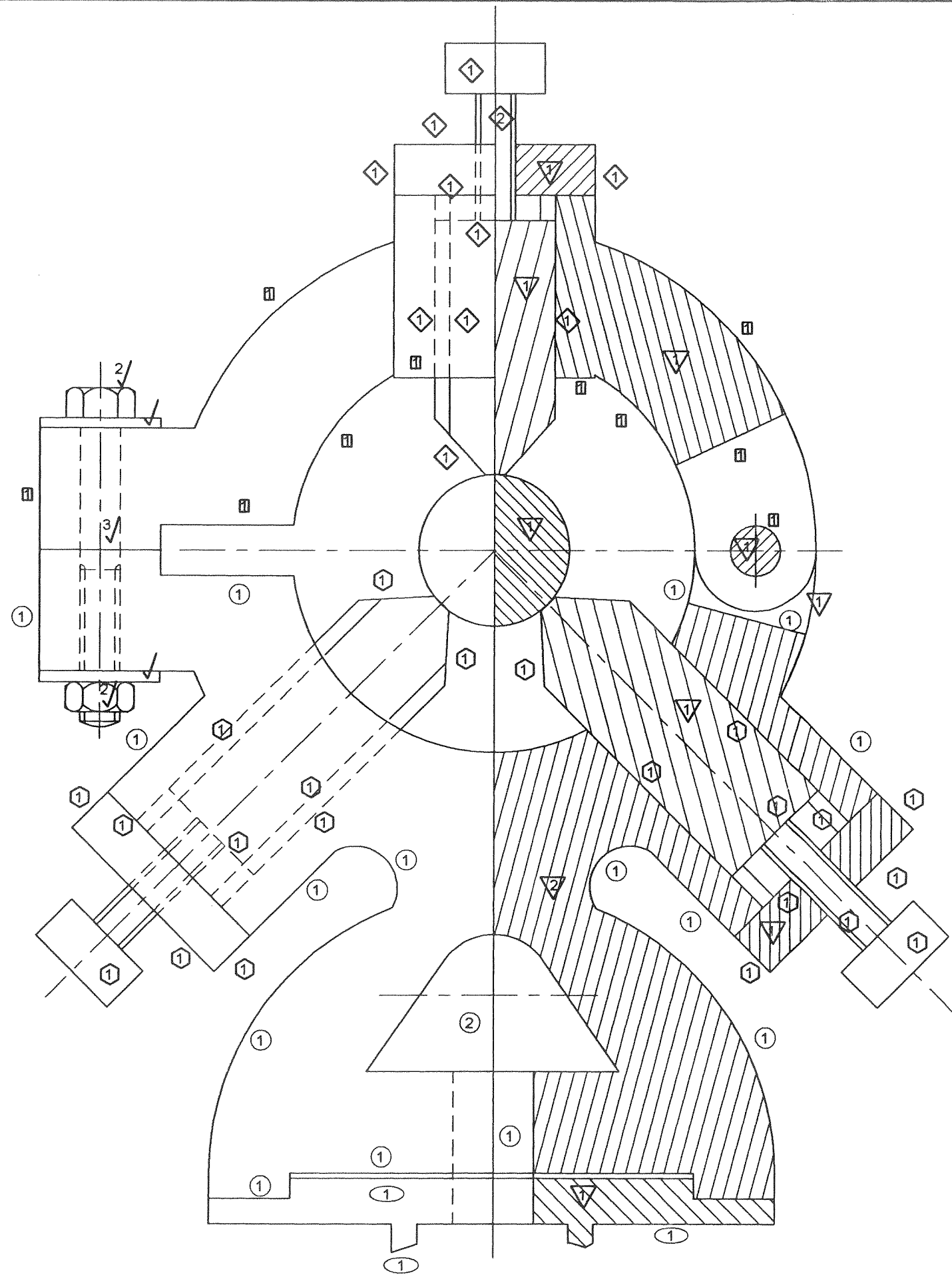
PP / PV



EXAMINATION NUMBER / EKSAMENNOMMER

A										
B										

**QUESTION 2 / VRAAG 2**



TECHNICAL DRAWING 711-1/2 Z HG

TEGNIJSE TEKENE 711-1/2 Z HG

MARK ALLOCATION / PUNTETOEKENING

SUPPORT / STUT	○	17		
SECTIONING / ARSERING	▽	4		
COVER / DEKSEL	□	10		
SECTIONING / ARSERING	▽	2		
GUIDEPIN E / LEIPEN E	◇	11		
SECTIONING / ARSERING	▽	2		
GUIDEPIN D (1) / LEIPEN D (1)	⬡	11		
SECTIONING / ARSERING	▽	2		
GUIDEPIN D (2) / LEIPEN D (2)	⬡	11		
BOLT & NUT / BOUT & MOER	✓	8		
SLIDE / GLYSTUK	◌	3		
SECTIONING / ARSERING	▽	1		
SECTIONING SHAFT / ARSERING-AS	▽	1		
<b>SUBTOTAL / SUB TOTAAL</b>		<b>83</b>		
DIMENSIONS / AFMETINGS		3		
TITLE & SCALE / TITEL & SKAAL		1		
PRESENTATION / AANBIEDING		4		
ASSEMBLY / SAMESTELLING		4		
<b>SUBTOTAL / SUB TOTAAL</b>		<b>12</b>		
<b>TOTAL / TOTAAL</b>		<b>95</b>		

EXAMINATION NUMBER / EKSAMENNUMMER

**QUESTION 4 / VRAAG 4**

**ANSWER SHEET 4**

**ANTWOORDVEL 4**