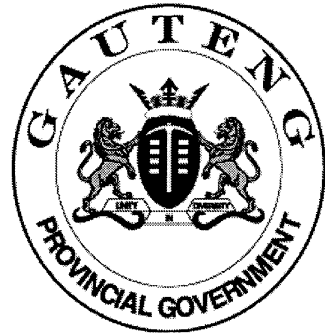


**SENIOR CERTIFICATE  
EXAMINATION  
SENIORSERTIFIKAAT-EKSAMEN**



**FEBRUARY / MARCH  
FEBRUARIE / MAART**

**2006**

**TECHNICAL DRAWING  
TEGNIесе TEKENE**

**Second Paper : Drawing  
Tweede Vraestel : Tekene**

**HG**

**711-1/2**

TECHNICAL DRAWING/TEGNIесе TEKENE HG  
Paper 2/Vraestel 2



**Cover + 6 pages  
Voorblad + 6 bladsye**

**X05**



**COPYRIGHT RESERVED / KOPIEREG VOORBEHOU  
APPROVED BY UMALUSI / GOEDGEKEUR DEUR UMALUSI**





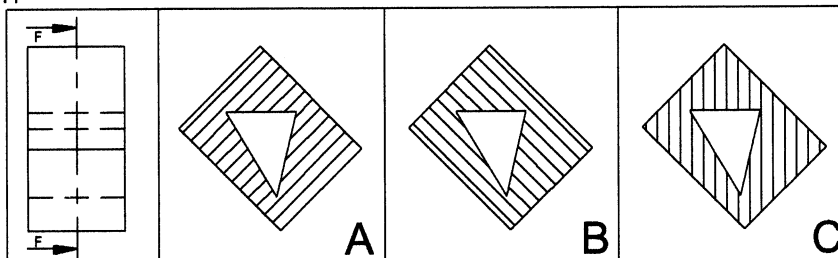
**QUESTION 1.1**

CHOOSE THE CORRECT SECTIONAL VIEW FROM THE GIVEN ALTERNATIVES IN QUESTIONS 1.1.1 TO 1.1.4 AND MARK THE CORRECT ANSWER WITH AN (X) IN THE GIVEN TABLE. (8)

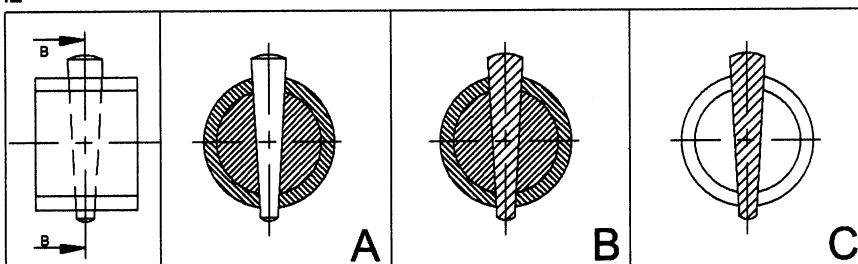
**VRAAG 1.1**

KIES DIE KORREKTE DEURSNEE-AANSIG VANUIT DIE GEGEWE ALTERNATIEWE IN VRAE 1.1.1 TOT 1.1.4 EN MERK DIE KORREKTE ANTWOORD MET 'N KRUISIE (X) IN DIE GEGEWE TABEL. (8)

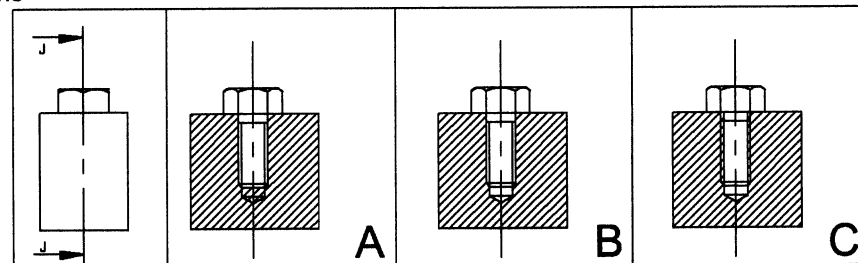
1.1.1



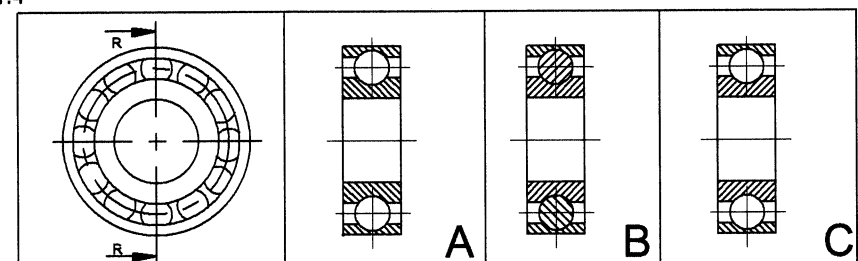
1.1.2



1.1.3



1.1.4



1.1	A	B	C	2		
1.2	A	B	C	2		
1.3	A	B	C	2		
1.4	A	B	C	2		
TOTAL / TOTAAL				8		

**QUESTION 1.2**

FIGURE 1.2 ON ANSWER SHEET 1 SHOWS AN INCOMPLETE DRAWING OF AN ASSEMBLY FROM THE INDUSTRY.

STUDY THE DRAWING AND ANSWER THE QUESTIONS THAT FOLLOW. (17)

**VRAAG 1.2**

FIGUUR 1.2 OP ANTWOORDVEL 1 TOON 'N ONVOLTOOIDE TEKENING VAN 'N SAMESTELLING UIT DIE INDUSTRIE.

BESTUDEER DIE TEKENING EN BEANTWOORD DIE VRAE WAT VOLG. (17)

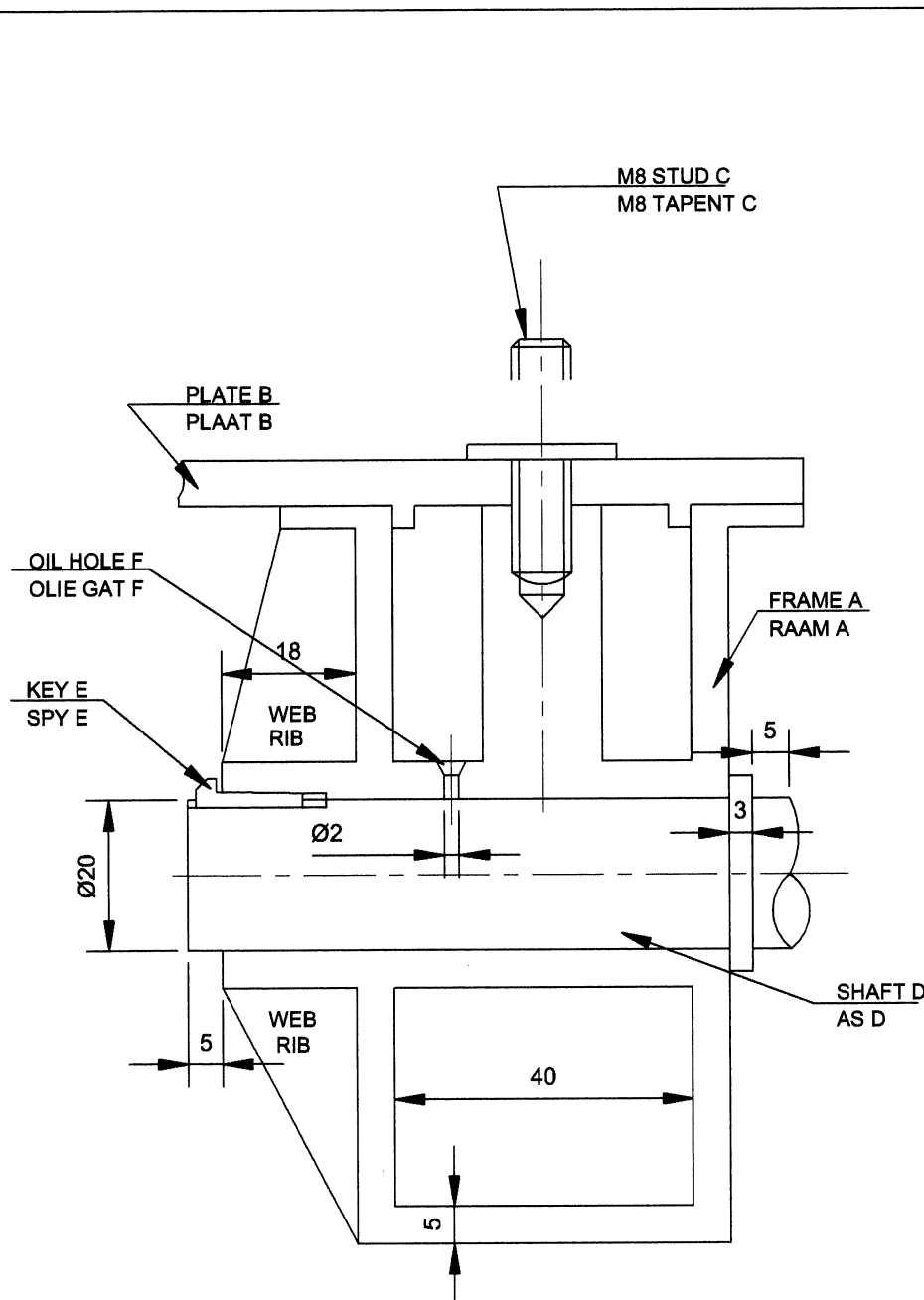


FIGURE 1.2 / FIGUUR 1.2

**TECHNICAL DRAWING HG  
TEGNIESE TEKENE HG**

( Second Paper ) 711-1/2 L  
( Tweede Vraestel )



QUESTION	ANSWER	MARKS
1.2.1 WHAT IS THE DIAMETER OF THE OIL HOLE F ?		1
1.2.2 NAME THE KEY E.		2
1.2.3 CALCULATE THE SHAFT LENGTH.		2
1.2.4 COMPLETE THE DRAWING BY DRAWING IN ALL SECTION LINES.		9
1.2.5 CONSTRUCT A NUT ON THE STUD C.		3
<b>TOTAL</b>		<b>17</b>

VRAE	ANTWOORDE	PUNTE
1.2.1 WAT IS DIE DIAMETER VAN DIE OLIE GAT F ?		1
1.2.2 BENOEM DIE SPYE E.		2
1.2.3 BEREKEN DIE LENGTE VAN DIE AS.		2
1.2.4 VOLTOOI DIE TEKENING DEUR ALLE ARSEERLYNE IN TE TEKEN.		9
1.2.5 KONSTRUEER 'N MOER OP TAPENT C.		3
<b>TOTAL</b>		<b>17</b>

SUMMARY / OPSOMMING	
1.1	8
1.2	17
<b>TOTAL / TOTAAL</b>	<b>25</b>

EXAMINATION NUMBER / EKSAMENNOMMER

A  B  C  D  E  F  G  H  I  J  K  L  M  N  O  P  Q  R  S  T  U  V  W  X  Y  Z

**QUESTION 1 / VRAAG 1**

**ANSWER SHEET 1  
ANTWOORDVEL 1**

**QUESTION 2**

BY MAKING USE OF THE GIVEN VIEW,  
PRODUCE A TWO-POINT PERSPECTIVE DRAWING  
OF THE OFFICE BLOCK.

DO NOT SHOW HIDDEN DETAIL. (40)

**VRAAG 2**

DEUR GEBRUIK TE MAAK VAN DIE GEGEWE  
AANSIG, TEKEN 'N TWEE-PUNT-PERSPEKTIEF  
TEKENING VAN DIE KANTOORBLOK.

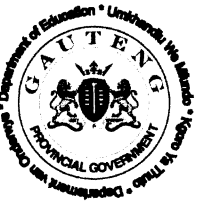
MOET NIE VERSTEEKTE DETAIL TOON NIE. (40)

TECHNICAL DRAWING HG

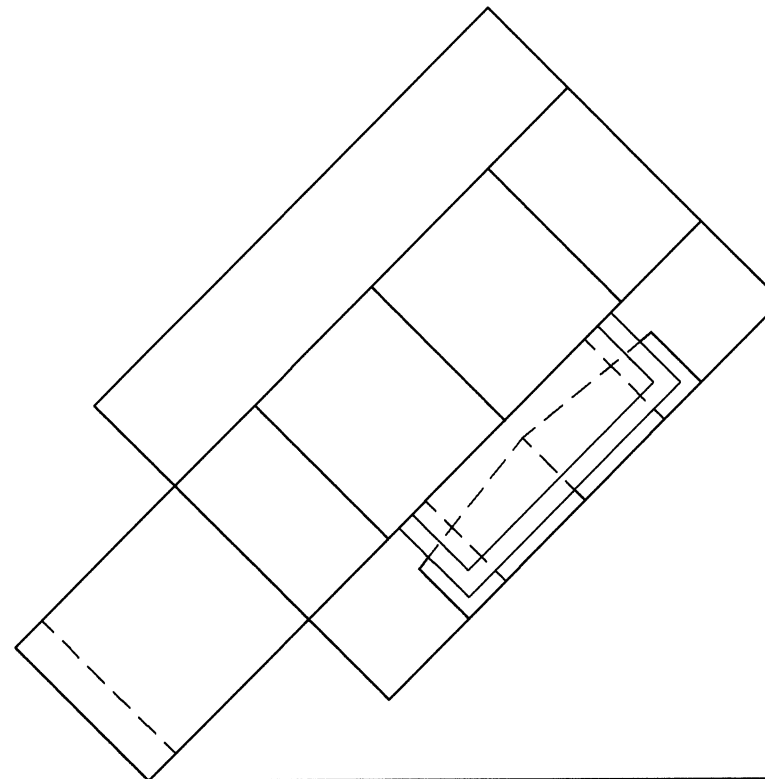
TEGNIесе TEKENE HG

( Second Paper ) 711-1/2 L

( Tweede Vraestel )



MARK ALLOCATION / PUNTETOEKENNING			
VP	2		
PERSPECTIVE/PERSPEKTIEF	36		
PRESENTATION/AANBIEDING	2		
TOTAL/TOTAAL	40		

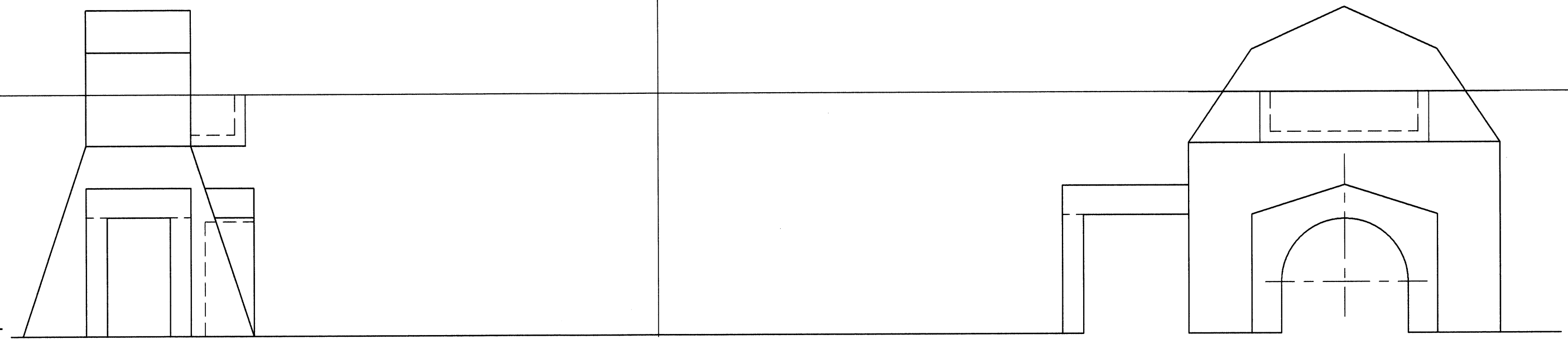


PP / PV

HL

GL

SP



EXAMINATION NUMBER / EKSAMENNOMMER

**QUESTION 2 / VRAAG 2**

**ANSWER SHEET 2**

**ANTWOORDVEL 2**



**QUESTION 3**

FIGURE 3 SHOWS THREE VIEWS OF A SLIDE.

DRAW TO SCALE 1:1 A SECTIONED ISOMETRIC VIEW OF THE SLIDE ON CUTTING PLANE F-F.

USE POINT Q AS THE STARTING POINT.

DO NOT SHOW HIDDEN DETAIL.

(40)

**VRAAG 3**

FIGUUR 3 TOON DRIE AANSIGTE VAN 'N GLYSTUK.

TEKEN VOLGENS SKAAL VAN 1:1 'N DEURSNEE ISOMETRIESE AANSIG VAN DIE GLYSTUK OP SNIYVLAK F-F.

GEBRUIK PUNT Q AS DIE BEGINPUNT.

MOENIE VERBORGE DETAIL TOON NIE.

(40)

MARK ALLOCATION / PUNTETOEKENNING			
ISOMETRIC / ISOMETRIES	36		
SECTIONING / ARSERING	2		
PRESENTATION / AANBIEDING	2		
TOTAL / TOTAAL	40		

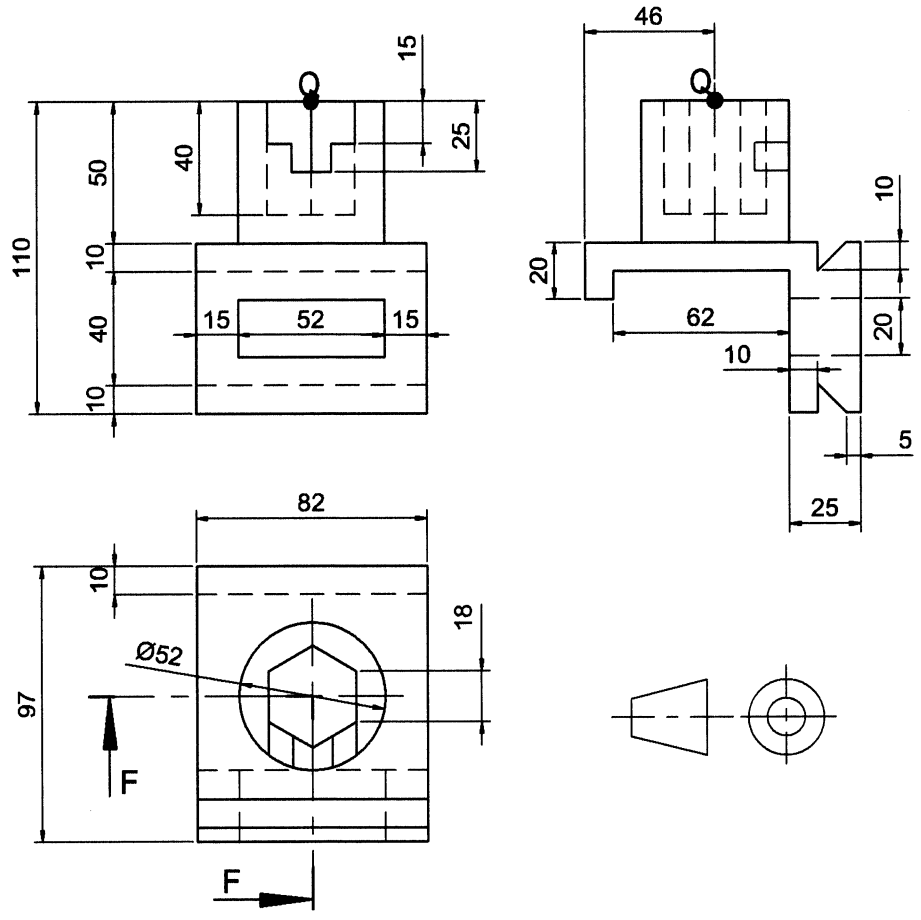
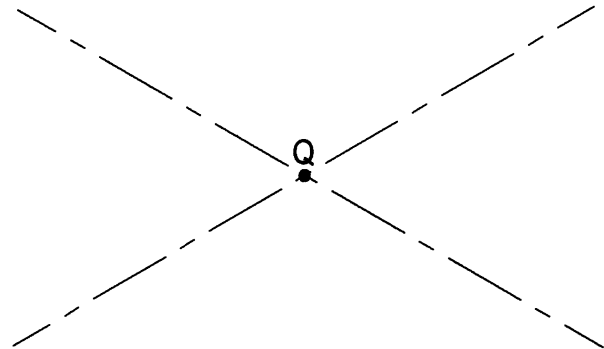
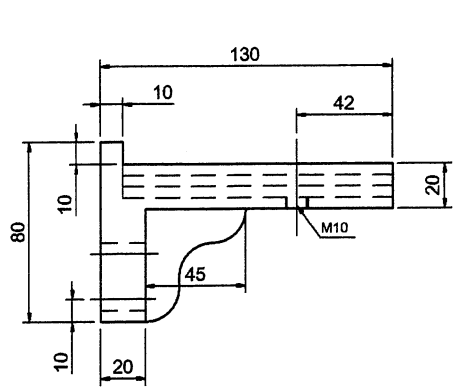


FIGURE 3 / FIGUUR 3

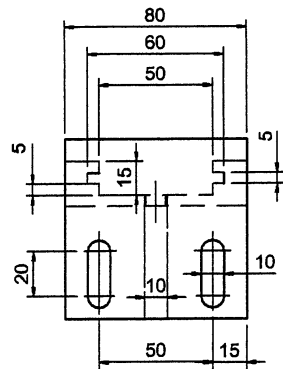
EXAMINATION NUMBER / EKSAMENNUMMER

<input type="checkbox"/>	<input type="checkbox"/>	<input type="checkbox"/>	<input type="checkbox"/>	<input type="checkbox"/>	<input type="checkbox"/>	<input type="checkbox"/>	<input type="checkbox"/>	<input type="checkbox"/>	<input type="checkbox"/>
--------------------------	--------------------------	--------------------------	--------------------------	--------------------------	--------------------------	--------------------------	--------------------------	--------------------------	--------------------------

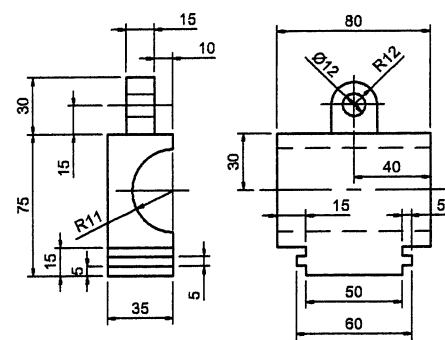
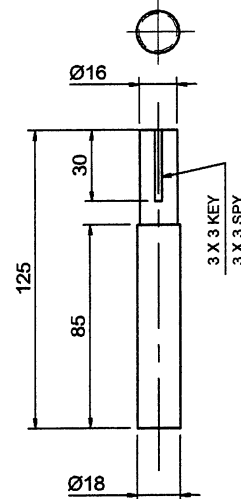
**QUESTION 3 / VRAAG 3**



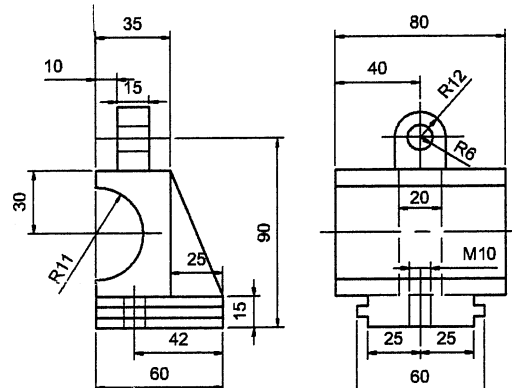
FRAME - A / RAAM - A



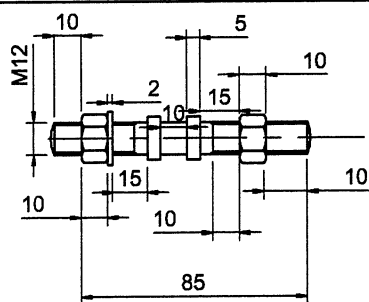
SHAFT - H / AS - H



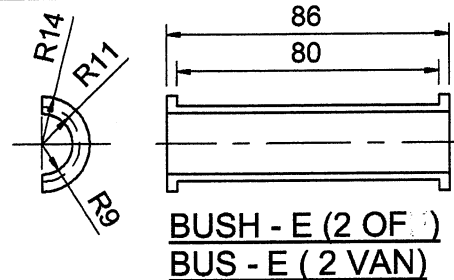
SLIDE B / GLYSTUK B



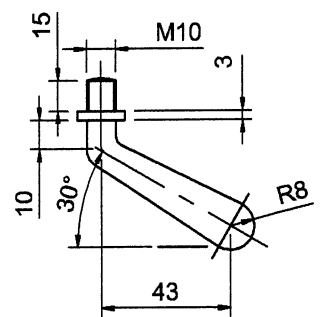
SLIDE C / GLYSTUK C



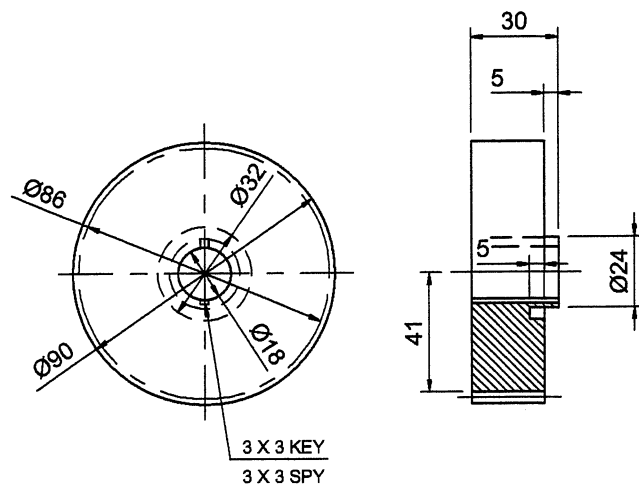
BOLT D / BOUT D



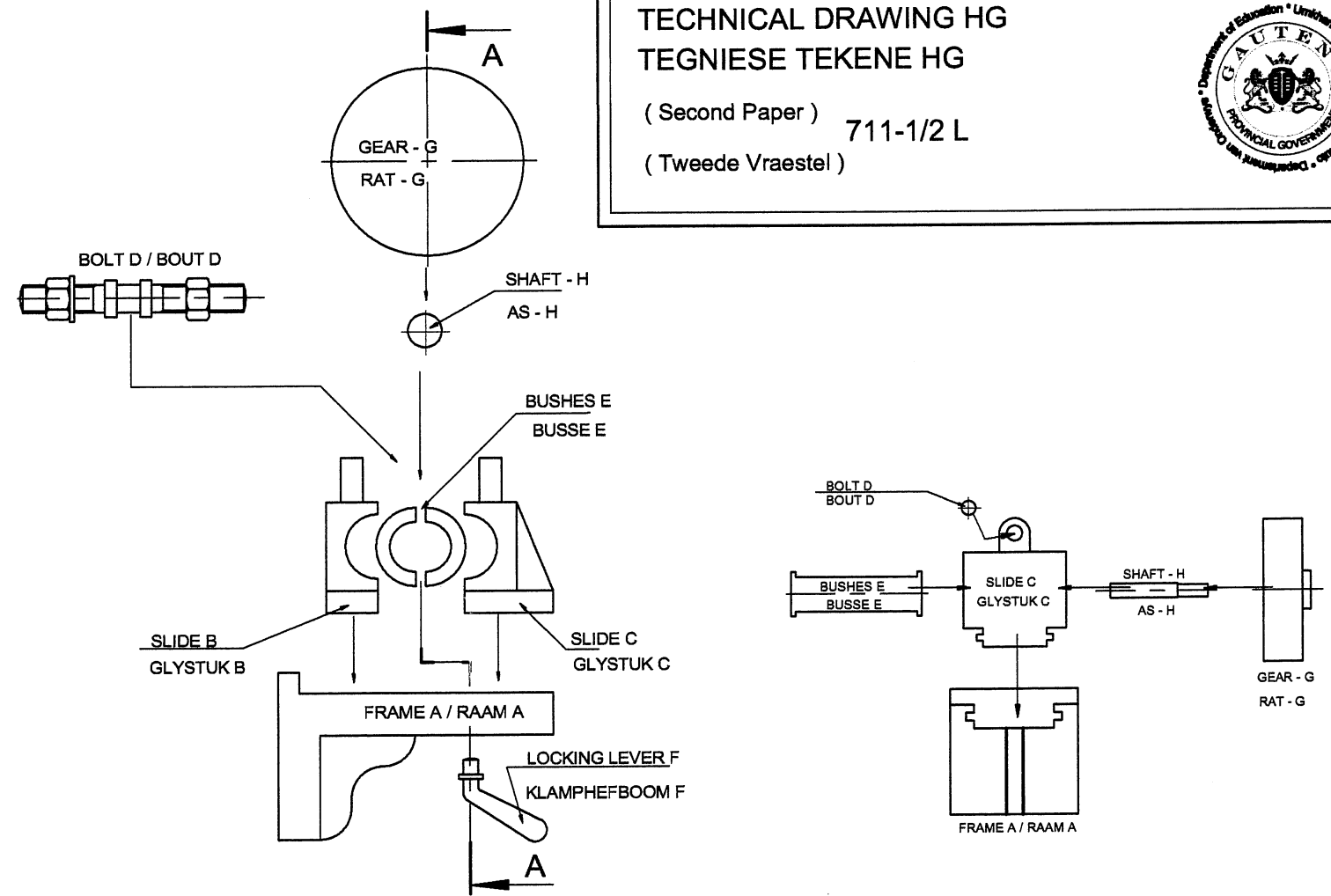
BUSH - E (2 OF)  
 BUS - E (2 VAN)



LOCKING LEVER - F  
 SLUITKLAMP - F



GEAR - G / RAT - G



KEY TO ASSEMBLY OF LOCKING CLAMP MECHANISM  
 SLEUTEL TOT SAMESTELLING VAN SLUITKLAMPMEGANISME

**QUESTION 4**

THE DIAGRAM SHEET SHOWS THE COMPONENTS OF A LOCKING CLAMP MECHANISM AS WELL AS A KEY TO THE ASSEMBLY.

4.1 DRAW TO SCALE 1:1 AND IN THIRD ANGLE ORTHOGRAPHIC PROJECTION THE FOLLOWING VIEWS OF THE ASSEMBLED LOCKING CLAMP MECHANISM:

4.1.1 FRONT VIEW

4.1.2 SECTIONED RIGHT VIEW ON CUTTING PLANE A-A AS INDICATED IN THE KEY

DO NOT SHOW HIDDEN DETAIL.

4.2 INSERT FOUR DIMENSIONS ON EACH VIEW.

( 95 )

**VRAAG 4**

DIE DIAGRAMVEL TOON DIE KOMPONENTE VAN N SLUITKLAMPMEGANISME ASOOK 'N SLEUTEL VAN HOE DIE MEGANISME SAAMGESTEL WORD.

4.1 TEKEN VOLGENS SKAAL VAN 1:1 EN IN DERDEHOEKSE ORTOGRAFIËSE PROJESIE DIE VOLGENDE AANSIGTE VAN DIE SAAMGESTELDE MEGANISME:

4.1.1 VOORAANSIG

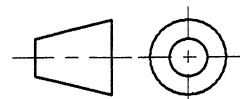
4.1.2 DEURSNEE REGTERAANSIG OP SNYVLAK A-A SOOS AANGETOON IN DIE SLEUTEL

MOENIE VERBORGE DETAIL TOON NIE.

4.2 VOEG VIER AFMETINGS BY ELKE AANSIG.

( 95 )

**LOCKING CLAMP MECHANISM  
 SLUITKLAMPMEGANISME**



**DIAGRAM SHEET FOR QUESTION 4  
 DIAGRAMVEL VIR VRAAG 4**

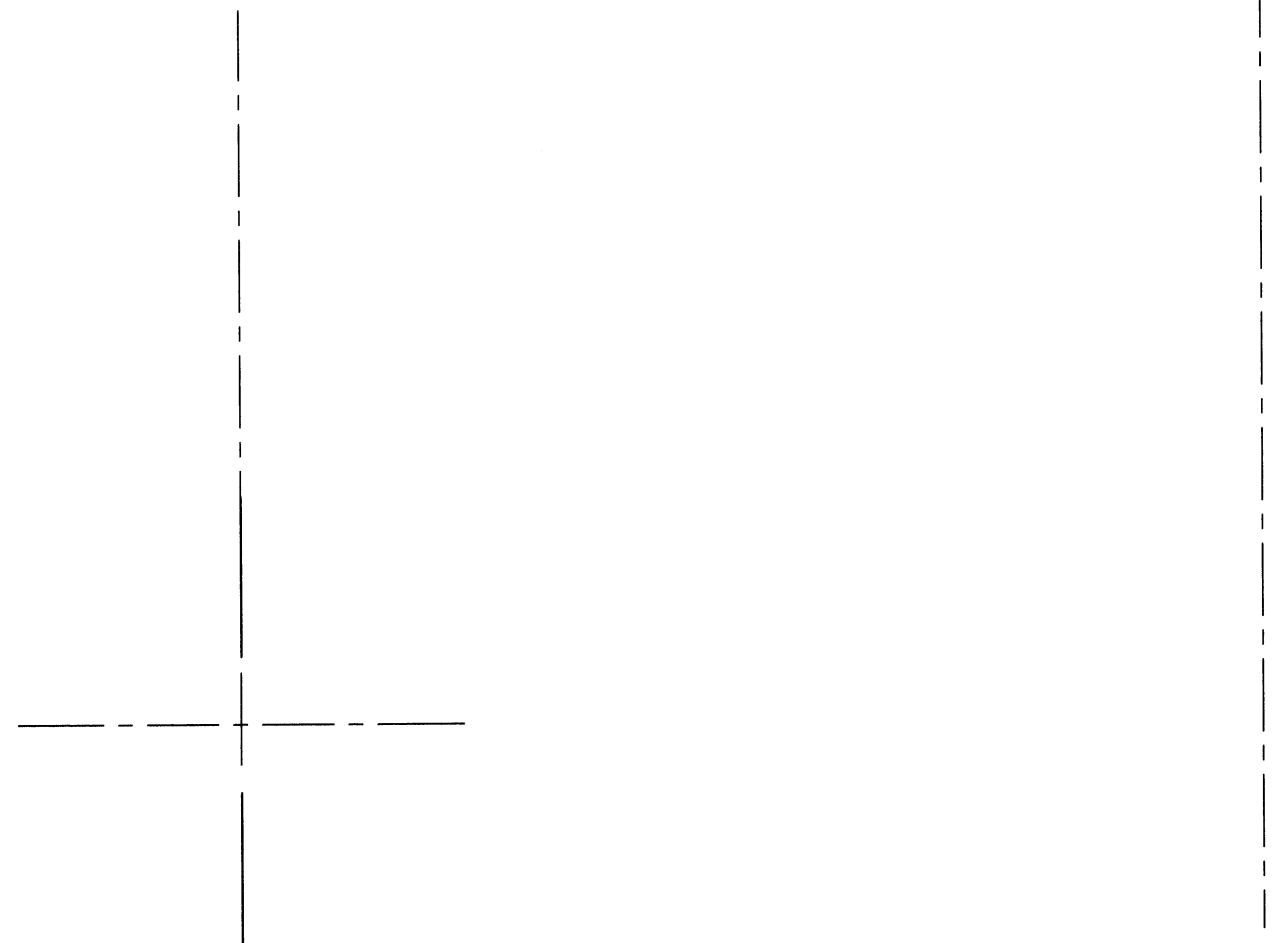
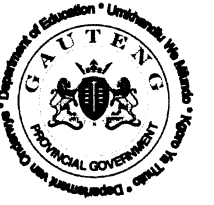
TECHNICAL DRAWING HG

TEGNIесе TEKENE HG

( Second Paper )

711-1/2 L

( Tweede Vraestel )



MARK ALLOCATION / PUNTETOEKENNING

FRONT VIEW / VOORAANSIG

FRAME / RAAM	7		
SLIDE 1 / GLYSTUK 1	4		
SLIDE 2 / GLYSTUK 2	4		
BUSHES / BUSSE	2		
L-LEVER / S-HEFBOOM	3		
GEAR / RAT	2		
BOLT / BOUT	7		
SUBTOTAL / SUBTOTAAL	29		

RIGHT VIEW / REGTERAANSIG

FRAME / RAAM	9		
SECTIONING/ARSERING	2		
SLIDE / GLYSTUK	9		
SECTIONING/ARSERING	2		
BUSH / BUS - SHAFT / AS	8		
SECTIONING/ARSERING	2		
L-LEVER / S-HEFBOOM	3		
SECTIONING/ARSERING	2		
GEAR / RAT	7		
SECTIONING/ARSERING	3		
BOLT / BOUT	2		
SECTIONING/ARSERING	1		
SUBTOTAL / SUBTOTAAL	50		

GENERAL/ALGEMEEN

DIMENSIONS/AFMETINGS	5		
PRESENTATION/AANBIEDING	5		
ASSEMBLY/SAMESTELLING	6		
SUBTOTAL / SUBTOTAAL	16		
TOTAL / TOTAAL	95		

EXAMINATION NUMBER / EKSAMENNUMMER

Grid for entering examination number:

QUESTION 4 / VRAAG 4

ANSWER SHEET 4

ANTWOORDVEL 4