

GAUTENG DEPARTMENT OF EDUCATION

GAUTENGSE DEPARTEMENT VAN ONDERWYS

TECHNICAL DRAWING : HIGHER GRADE

TEGNIËSE TEKENE : HOËR GRAAD

SENIOR CERTIFICATE EXAMINATION

SENIORSERTIFIKAAT-EKSAMEN

711 - 1 / 2 U

QUESTION 3

ANSWER THIS QUESTION ON ANSWER SHEET 3.

Make use of the given diagram on answer sheet 3 to produce a twopoint perspective drawing of a factory.

DO NOT SHOW HIDDEN DETAIL.

Presentation

38

2

TOTAL

40

VRAAG 3

BEANTWOORD HIERDIE VRAAG OP ANTWOORDVEL 3.

DEUR GEBRUIK TE MAAK VAN DIE GEGEWE DIAGRAM OP ANTWOORDVEL 3 TEKEN 'N TWEEPUNTPERSPEKTIEF-TEKENING VAN 'N FABRIEK.

MOET NIE VERBORGE DETAIL TOON NIE.
Aanbieding

38

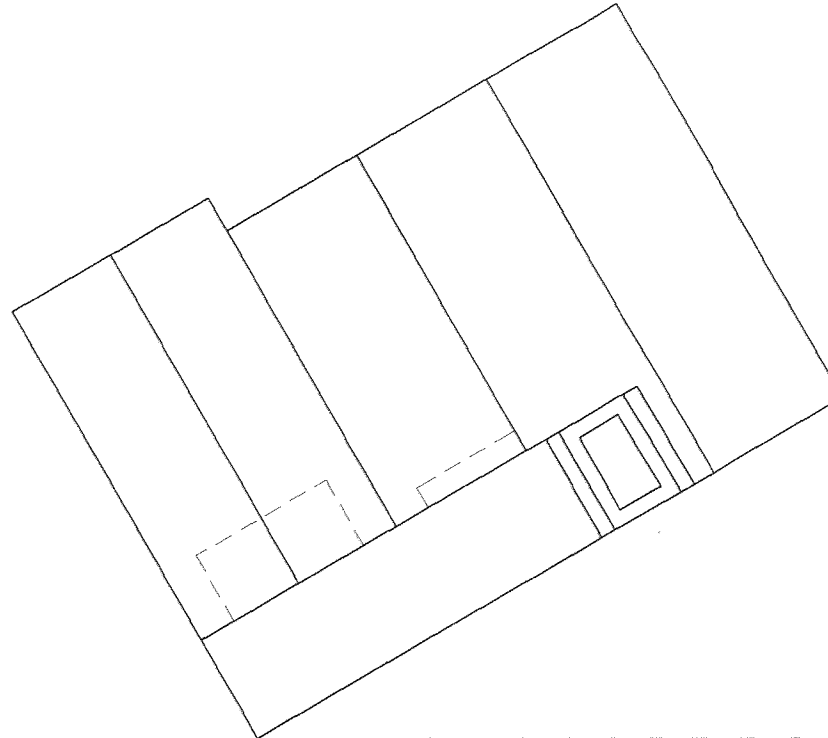
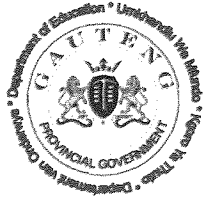
2

TOTAAL

40

TECHNICAL DRAWING 711-1/2 U HIGHER GRADE

TEGNIESE TEKENE 711-1/2 U HOËR GRAAD

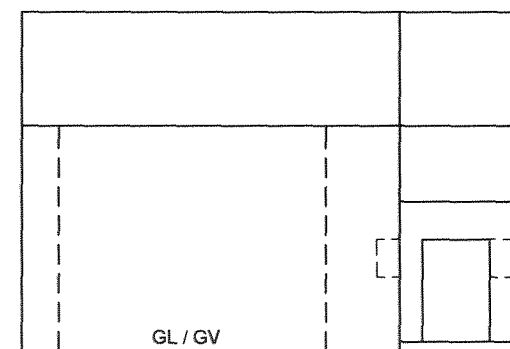


PP = PICTURE PLANE
HL = HORIZON LINE
SP = STATION POINT
GL = GROUND LINE

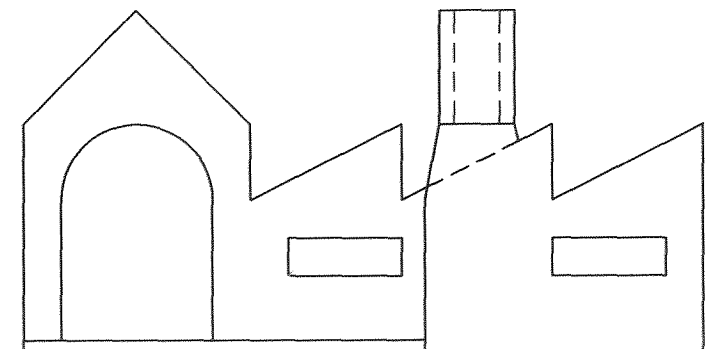
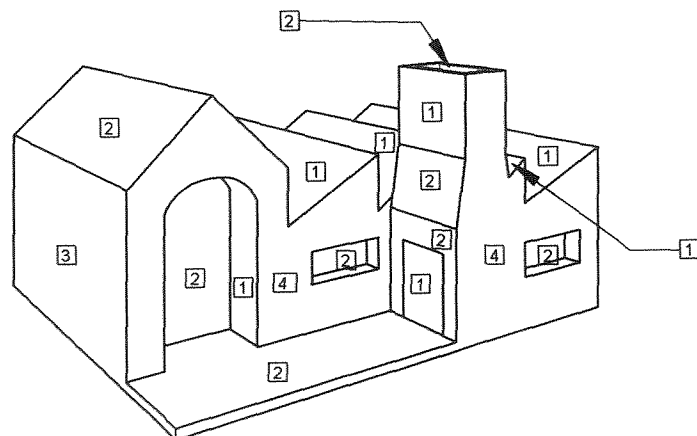
PV = PRENTVLAK
HL = HORISONLYN
SP = STAANPUNT
GV = GRONDVLAK

PP / PV

HL



GL / GV



SP

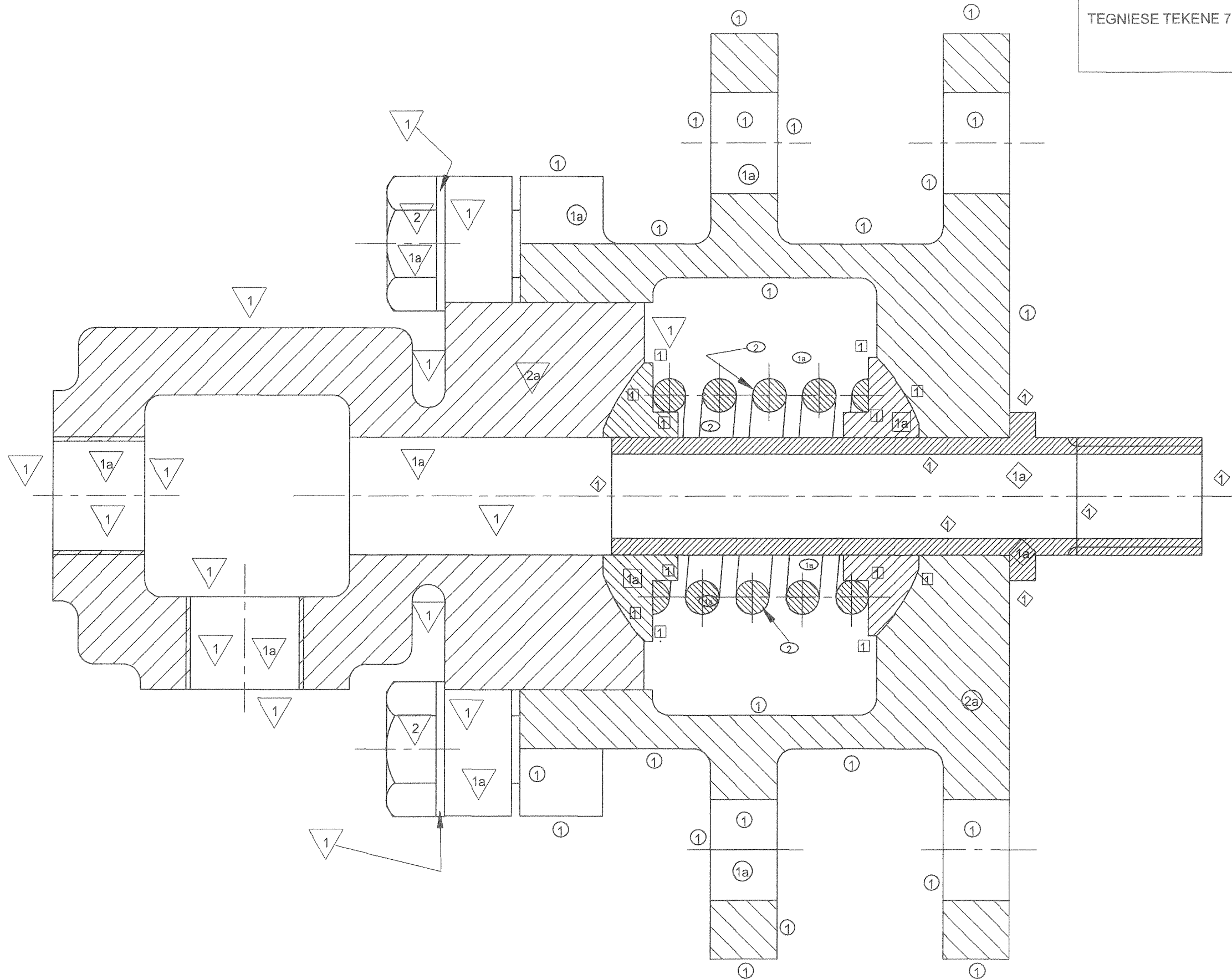
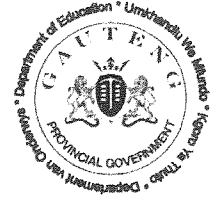
EXAMINATION NUMBER / EKSAMENNOMMER

Grid for entering the examination number, with a small 'A/B' box on the left.

QUESTION 3 / VRAAG 3

ANSWER SHEET 3

ANTWOORDVEL 3



MARK ALLOCATION PUNTETOEKENNING	
BODY HULSEL	24
SECTIONING ARSERING	5
COLLAR KRAAG	12
SECTIONING ARSERING	2
SPRING VEER	6
SECTIONING ARSERING	2
HEAD & BOLTS KOP & BOUTE	20
SECTIONING ARSERING	7
NIPPLE VEER	7
SECTIONING ARSERING	2
SUBTOTAL SUBTOTAAL	87
DIMENSIONS AFMETINGS	3
PROJECTION SYSTEM PROEKSIESISTEEM	2
TITLE & SCALE TITEL & SKAAL	1
PRESENTATION AANBIEDING	3
ASSEMBLY SAMSTELLING	4
SUBTOTAL SUBTOTAAL	13
TOTAL TOTAAL	100

EXAMINATION NUMBER / EKSAMENNOMMER

QUESTION 4 / VRAAG 4

ANSWER SHEET 4

ANTWOORDVEL 4