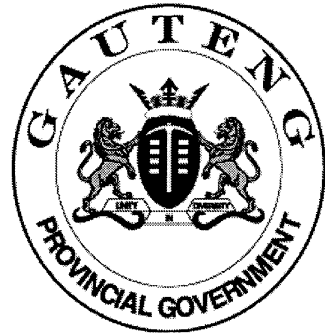


**SENIOR CERTIFICATE
EXAMINATION
SENIORSERTIFIKAAT-EKSAMEN**



**FEBRUARY / MARCH
FEBRUARIE / MAART**

2006

**TECHNICAL DRAWING
TEGNIесе TEKENE**

**Second Paper : Drawing
Tweede Vraestel : Tekene**

HG

711-1/2

TECHNICAL DRAWING/TEGNIесе TEKENE HG
Paper 2/Vraestel 2



**Cover + 6 pages
Voorblad + 6 bladsye**

X05



**COPYRIGHT RESERVED / KOPIEREG VOORBEHOU
APPROVED BY UMALUSI / GOEDGEKEUR DEUR UMALUSI**



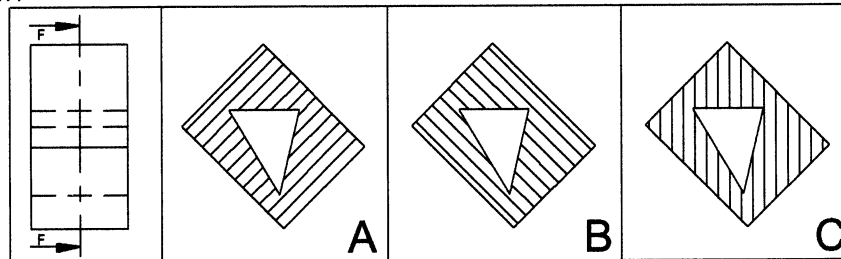
QUESTION 1.1

CHOOSE THE CORRECT SECTIONAL VIEW FROM THE GIVEN ALTERNATIVES IN QUESTIONS 1.1.1 TO 1.1.4 AND MARK THE CORRECT ANSWER WITH AN (X) IN THE GIVEN TABLE. (8)

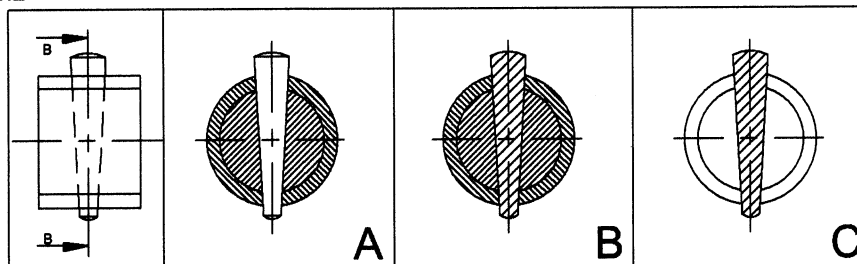
VRAAG 1.1

KIES DIE KORREKTE DEURSNEE-AANSIG VANUIT DIE GEGEWE ALTERNATIEWE IN VRAE 1.1.1 TOT 1.1.4 EN MERK DIE KORREKTE ANTWOORD MET 'N KRUISIE (X) IN DIE GEGEWE TABEL. (8)

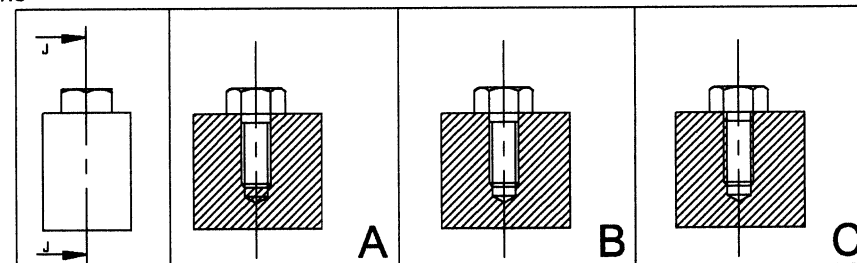
1.1.1



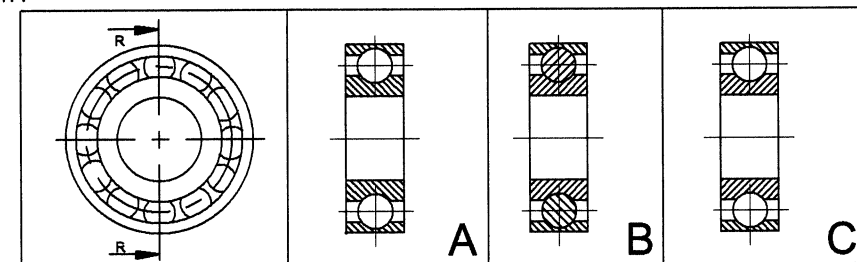
1.1.2



1.1.3



1.1.4



| | | | | | | | |
|----------------|---|---|---|---|--|--|--|
| 1.1 | A | B | C | 2 | | | |
| 1.2 | A | B | C | 2 | | | |
| 1.3 | A | B | C | 2 | | | |
| 1.4 | A | B | C | 2 | | | |
| TOTAL / TOTAAL | | | | 8 | | | |

QUESTION 1.2

FIGURE 1.2 ON ANSWER SHEET 1 SHOWS AN INCOMPLETE DRAWING OF AN ASSEMBLY FROM THE INDUSTRY.

STUDY THE DRAWING AND ANSWER THE QUESTIONS THAT FOLLOW. (17)

VRAAG 1.2

FIGUUR 1.2 OP ANTWOORDVEL 1 TOON 'N ONVOLTOOIDE TEKENING VAN 'N SAMESTELLING UIT DIE INDUSTRIE.

BESTUDEER DIE TEKENING EN BEANTWOORD DIE VRAE WAT VOLG. (17)

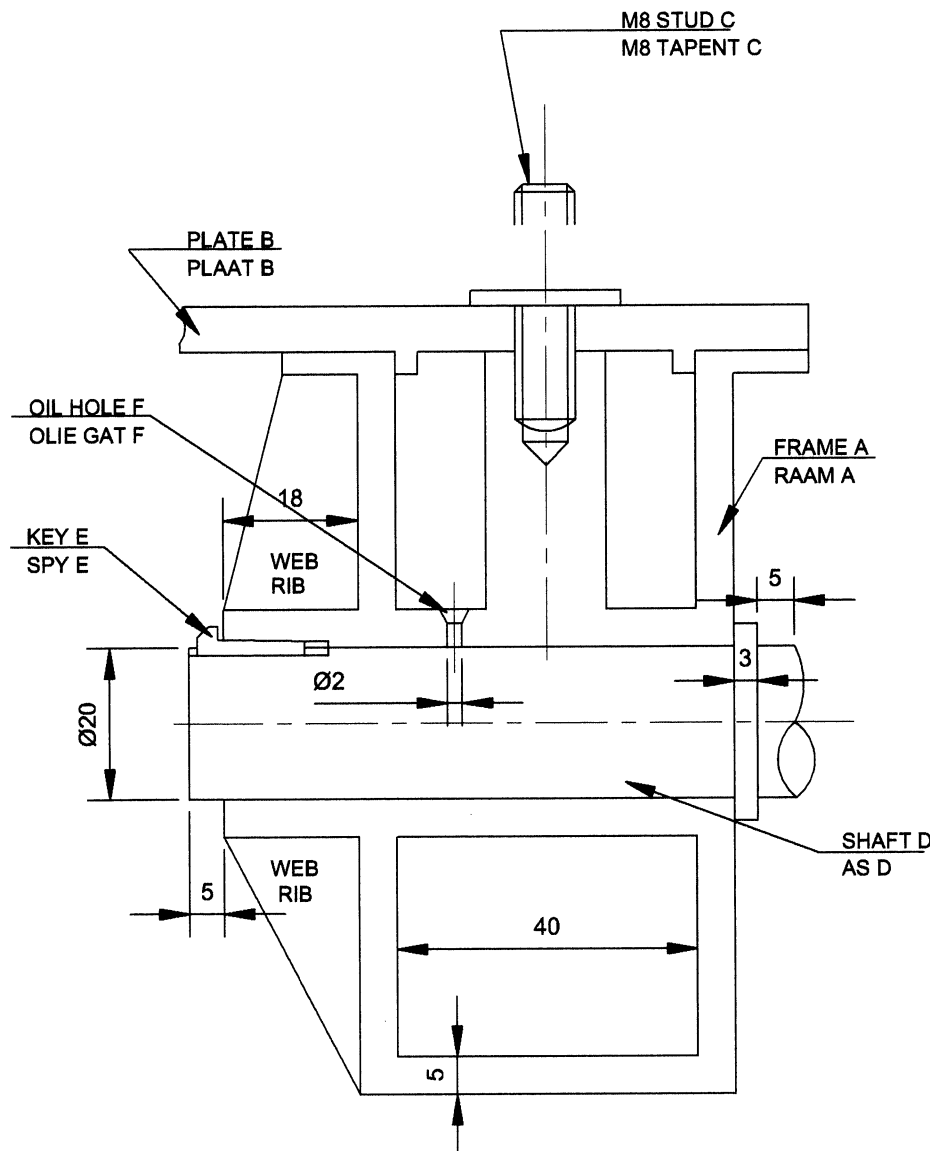


FIGURE 1.2 / FIGUUR 1.2

**TECHNICAL DRAWING HG
TEGNIESE TEKENE HG**

(Second Paper) 711-1/2 L
(Tweede Vraestel)



| QUESTION | ANSWER | MARKS |
|---|--------|-----------|
| 1.2.1 WHAT IS THE DIAMETER OF THE OIL HOLE F ? | | 1 |
| 1.2.2 NAME THE KEY E. | | 2 |
| 1.2.3 CALCULATE THE SHAFT LENGTH. | | 2 |
| 1.2.4 COMPLETE THE DRAWING BY DRAWING IN ALL SECTION LINES. | | 9 |
| 1.2.5 CONSTRUCT A NUT ON THE STUD C. | | 3 |
| TOTAL | | 17 |

| VRAE | ANTWOORDE | PUNTE |
|--|-----------|-----------|
| 1.2.1 WAT IS DIE DIAMETER VAN DIE OLIE GAT F ? | | 1 |
| 1.2.2 BENOEM DIE SPYE E. | | 2 |
| 1.2.3 BEREKEN DIE LENGTE VAN DIE AS. | | 2 |
| 1.2.4 VOLTOOI DIE TEKENING DEUR ALLE ARSEERLYNE IN TE TEKEN. | | 9 |
| 1.2.5 KONSTRUEER 'N MOER OP TAPENT C. | | 3 |
| TOTAL | | 17 |

| SUMMARY / OPSOMMING | | | |
|---------------------|----|--|--|
| 1.1 | 8 | | |
| 1.2 | 17 | | |
| TOTAL / TOTAAL | 25 | | |

EXAMINATION NUMBER / EKSAMENNUMMER

A/B [] [] [] [] [] [] [] [] [] [] [] []

QUESTION 1 / VRAAG 1

**ANSWER SHEET 1
ANTWOORDVEL 1**

QUESTION 2

BY MAKING USE OF THE GIVEN VIEW,
PRODUCE A TWO-POINT PERSPECTIVE DRAWING
OF THE OFFICE BLOCK.

DO NOT SHOW HIDDEN DETAIL. (40)

VRAAG 2

DEUR GEBRUIK TE MAAK VAN DIE GEGEWE
AANSIG, TEKEN 'N TWEE-PUNT-PERSPEKTIEF
TEKENING VAN DIE KANTOORBLOK.

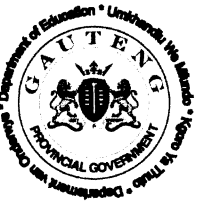
MOET NIE VERSTEEKTE DETAIL TOON NIE. (40)

TECHNICAL DRAWING HG

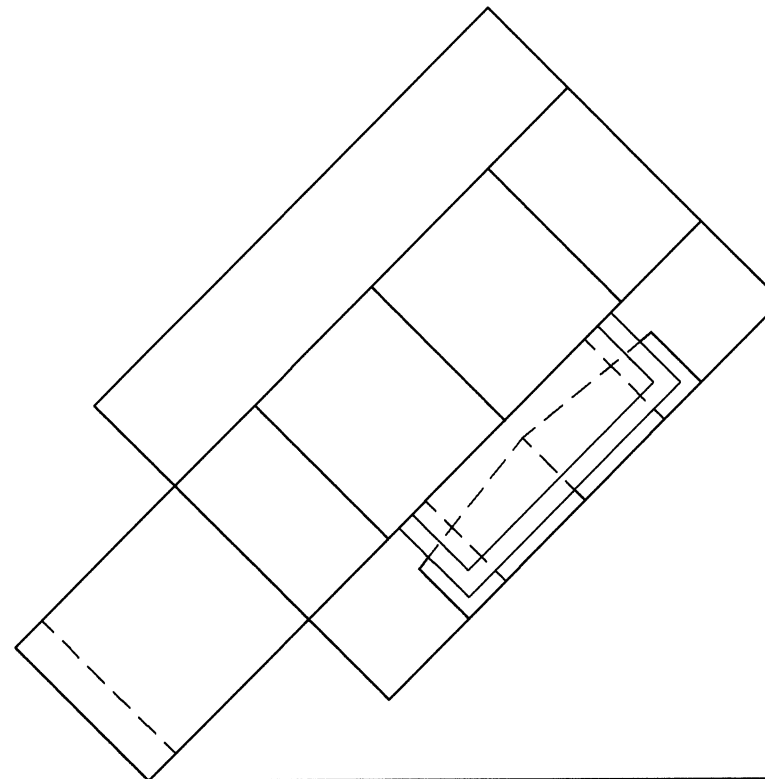
TEGNIесе TEKENE HG

(Second Paper) 711-1/2 L

(Tweede Vraestel)



| MARK ALLOCATION / PUNTETOEKENNING | | | |
|-----------------------------------|----|--|--|
| VP | 2 | | |
| PERSPECTIVE/PERSPEKTIEF | 36 | | |
| PRESENTATION/AANBIEDING | 2 | | |
| TOTAL/TOTAAL | 40 | | |

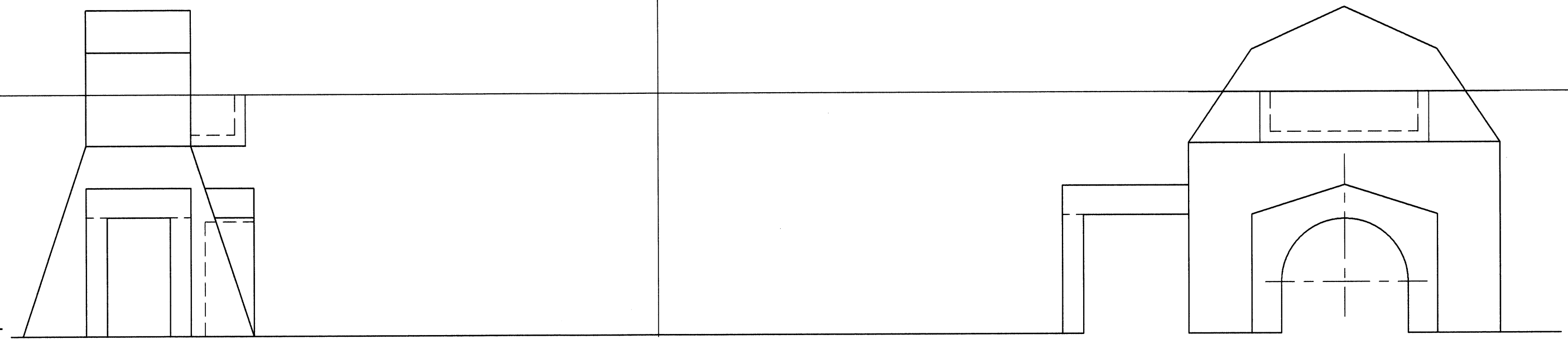


PP / PV

HL

GL

SP



EXAMINATION NUMBER / EKSAMENNOMMER

QUESTION 2 / VRAAG 2

ANSWER SHEET 2

ANTWOORDVEL 2



QUESTION 3

FIGURE 3 SHOWS THREE VIEWS OF A SLIDE.

DRAW TO SCALE 1:1 A SECTIONED ISOMETRIC VIEW OF THE SLIDE ON CUTTING PLANE F-F.

USE POINT Q AS THE STARTING POINT.

DO NOT SHOW HIDDEN DETAIL.

(40)

VRAAG 3

FIGUUR 3 TOON DRIE AANSIGTE VAN 'N GLYSTUK.

TEKEN VOLGENS SKAAL VAN 1:1 'N DEURSNEE ISOMETRIESE AANSIG VAN DIE GLYSTUK OP SNIYVLAK F-F.

GEBRUIK PUNT Q AS DIE BEGINPUNT.

MOENIE VERBORGE DETAIL TOON NIE.

(40)

| MARK ALLOCATION / PUNTETOEKENNING | | | |
|-----------------------------------|----|--|--|
| ISOMETRIC / ISOMETRIES | 36 | | |
| SECTIONING / ARSERING | 2 | | |
| PRESENTATION / AANBIEDING | 2 | | |
| TOTAL / TOTAAL | 40 | | |

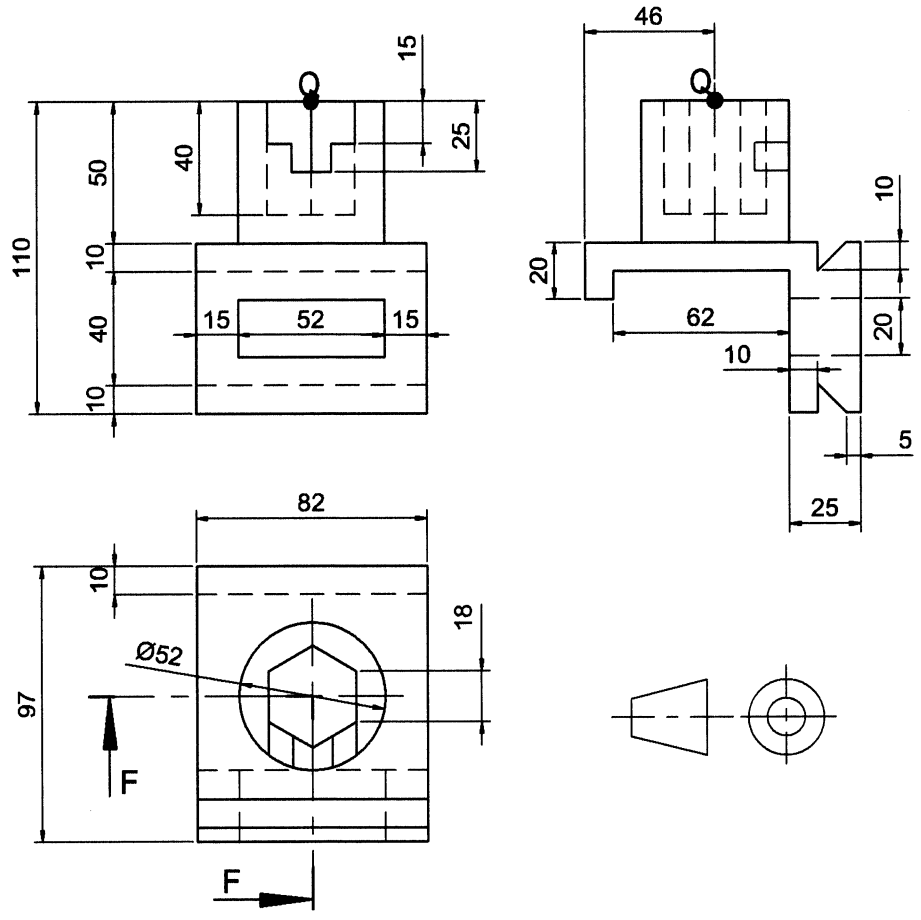
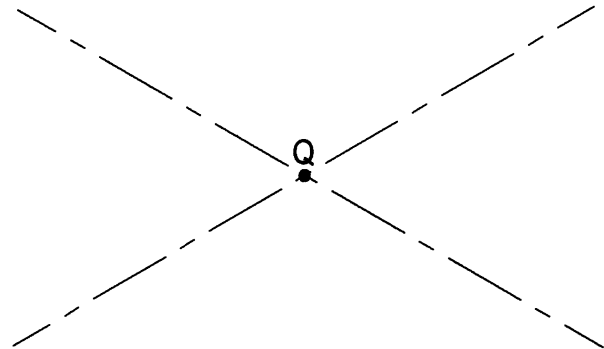
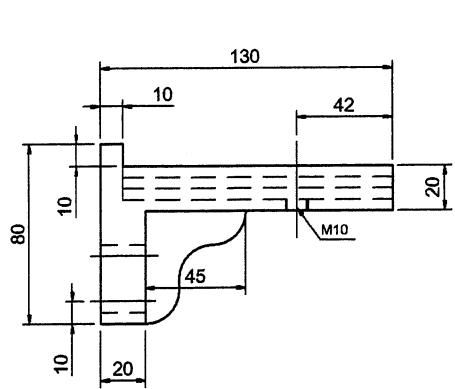


FIGURE 3 / FIGUUR 3

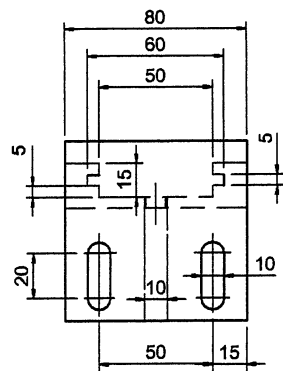
EXAMINATION NUMBER / EKSAMENNUMMER

| | | | | | | | | | |
|---|---|---|---|---|---|---|---|---|---|
| □ | □ | □ | □ | □ | □ | □ | □ | □ | □ |
|---|---|---|---|---|---|---|---|---|---|

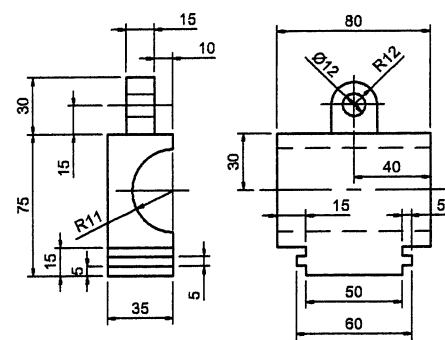
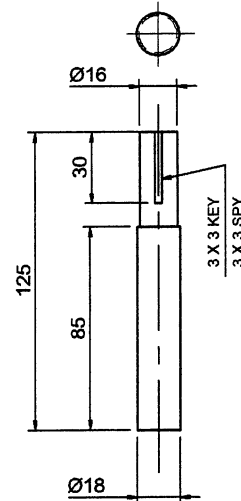
QUESTION 3 / VRAAG 3



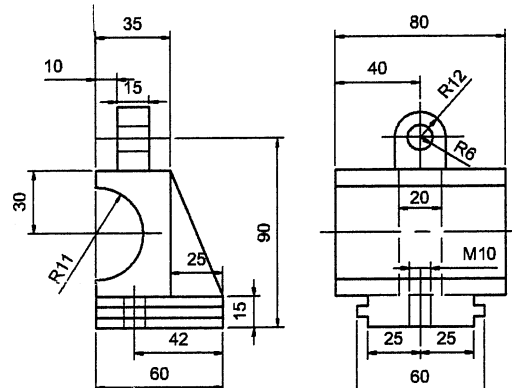
FRAME - A / RAAM - A



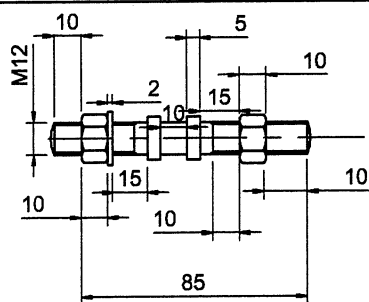
SHAFT - H / AS - H



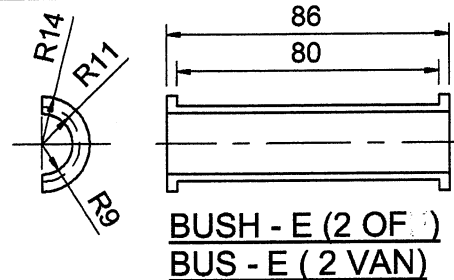
SLIDE B / GLYSTUK B



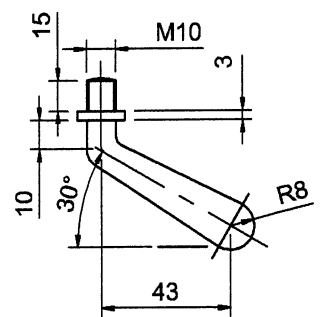
SLIDE C / GLYSTUK C



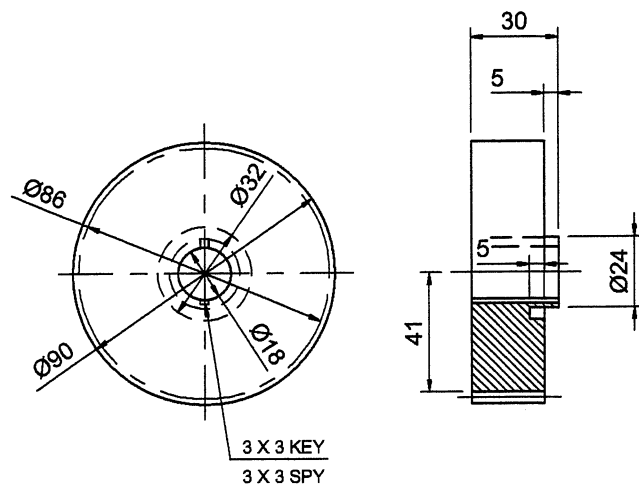
BOLT D / BOUT D



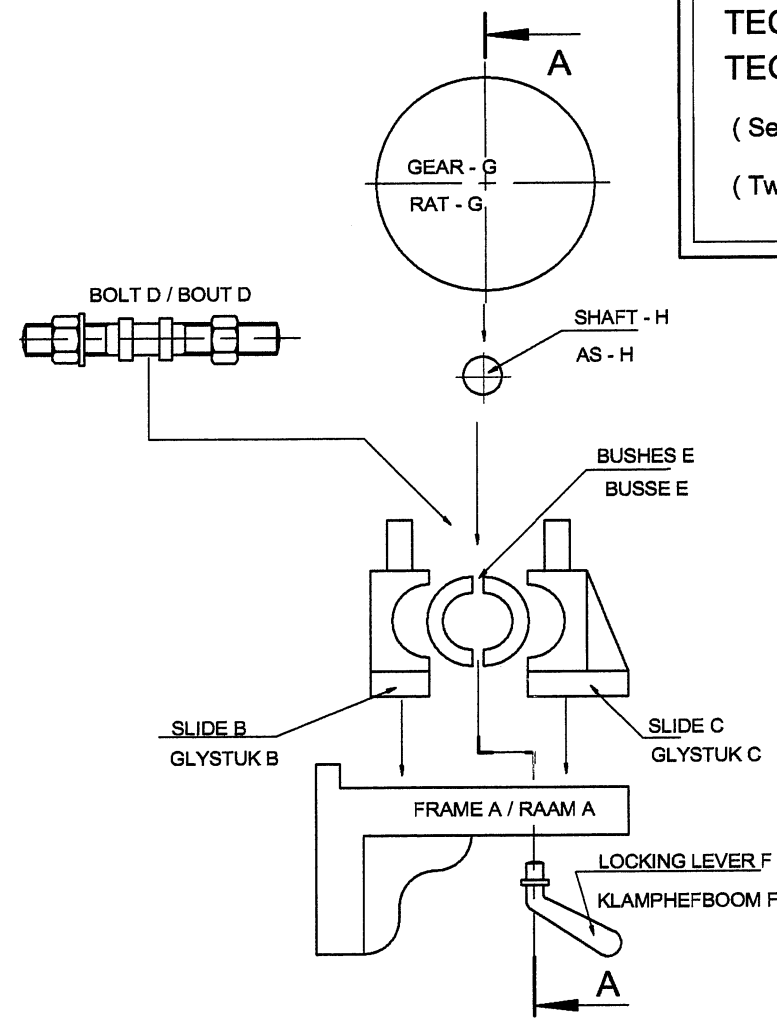
BUSH - E (2 OF)
 BUS - E (2 VAN)



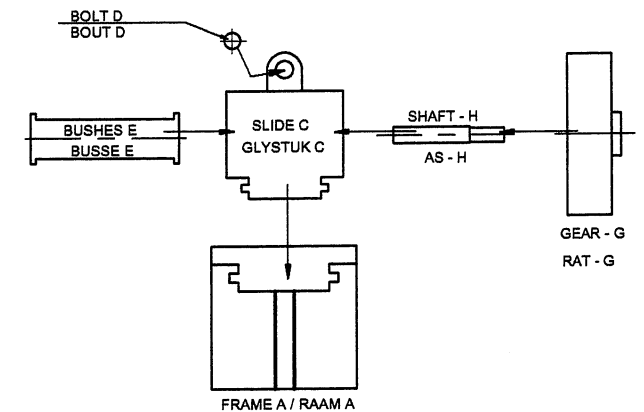
LOCKING LEVER - F
 SLUITKLAMP - F



GEAR - G / RAT - G



KEY TO ASSEMBLY OF LOCKING CLAMP MECHANISM
 SLEUTEL TOT SAMESTELLING VAN SLUITKLAMPMEGANISME



QUESTION 4

THE DIAGRAM SHEET SHOWS THE COMPONENTS OF A LOCKING CLAMP MECHANISM AS WELL AS A KEY TO THE ASSEMBLY.

4.1 DRAW TO SCALE 1:1 AND IN THIRD ANGLE ORTHOGRAPHIC PROJECTION THE FOLLOWING VIEWS OF THE ASSEMBLED LOCKING CLAMP MECHANISM:

4.1.1 FRONT VIEW

4.1.2 SECTIONED RIGHT VIEW ON CUTTING PLANE A-A AS INDICATED IN THE KEY

DO NOT SHOW HIDDEN DETAIL.

4.2 INSERT FOUR DIMENSIONS ON EACH VIEW.

(95)

VRAAG 4

DIE DIAGRAMVEL TOON DIE KOMPONENTE VAN N SLUITKLAMPMEGANISME ASOOK 'N SLEUTEL VAN HOE DIE MEGANISME SAAMGESTEL WORD.

4.1 TEKEN VOLGENS SKAAL VAN 1:1 EN IN DERDEHOEKSE ORTOGRAFIËSE PROJEKSIE DIE VOLGENDE AANSIGTE VAN DIE SAAMGESTELDE MEGANISME:

4.1.1 VOORAANSIG

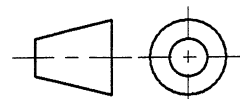
4.1.2 DEURSNEE REGTERAANSIG OP SNYVLAK A-A SOOS AANGETOON IN DIE SLEUTEL

MOENIE VERBORGE DETAIL TOON NIE.

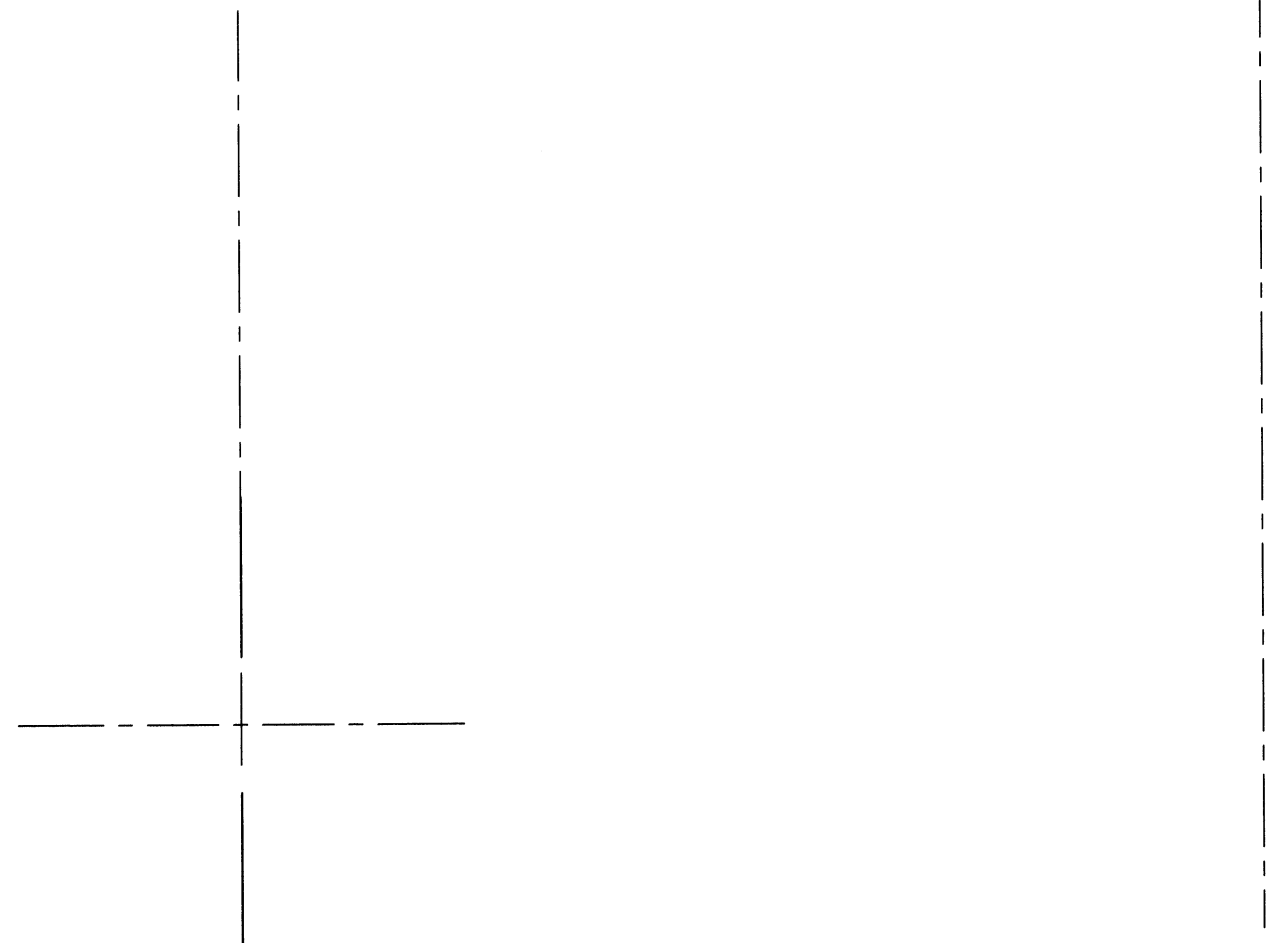
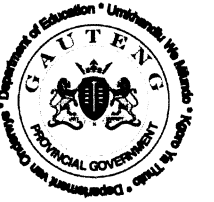
4.2 VOEG VIER AFMETINGS BY ELKE AANSIG.

(95)

**LOCKING CLAMP MECHANISM
 SLUITKLAMPMEGANISME**



**DIAGRAM SHEET FOR QUESTION 4
 DIAGRAMVEL VIR VRAAG 4**



MARK ALLOCATION / PUNTETOEKENNING

| FRONT VIEW / VOORAANSIG | | | |
|----------------------------------|-----------|--|--|
| FRAME / RAAM | 7 | | |
| SLIDE 1 / GLYSTUK 1 | 4 | | |
| SLIDE 2 / GLYSTUK 2 | 4 | | |
| BUSHES / BUSSE | 2 | | |
| L-LEVER / S-HEFBOOM | 3 | | |
| GEAR / RAT | 2 | | |
| BOLT / BOUT | 7 | | |
| SUBTOTAL / SUBTOTAAL | 29 | | |
| RIGHT VIEW / REGTERAANSIG | | | |
| FRAME / RAAM | 9 | | |
| SECTIONING/ARSERING | 2 | | |
| SLIDE / GLYSTUK | 9 | | |
| SECTIONING/ARSERING | 2 | | |
| BUSH / BUS - SHAFT / AS | 8 | | |
| SECTIONING/ARSERING | 2 | | |
| L-LEVER / S-HEFBOOM | 3 | | |
| SECTIONING/ARSERING | 2 | | |
| GEAR / RAT | 7 | | |
| SECTIONING/ARSERING | 3 | | |
| BOLT / BOUT | 2 | | |
| SECTIONING/ARSERING | 1 | | |
| SUBTOTAL / SUBTOTAAL | 50 | | |
| GENERAL/ALGEMEEN | | | |
| DIMENSIONS/AFMETINGS | 5 | | |
| PRESENTATION/AANBIEDING | 5 | | |
| ASSEMBLY/SAMESTELLING | 6 | | |
| SUBTOTAL / SUBTOTAAL | 16 | | |
| TOTAL / TOTAAL | 95 | | |

EXAMINATION NUMBER / EKSAMENNOMMER

QUESTION 4 / VRAAG 4

ANSWER SHEET 4

ANTWOORDVEL 4