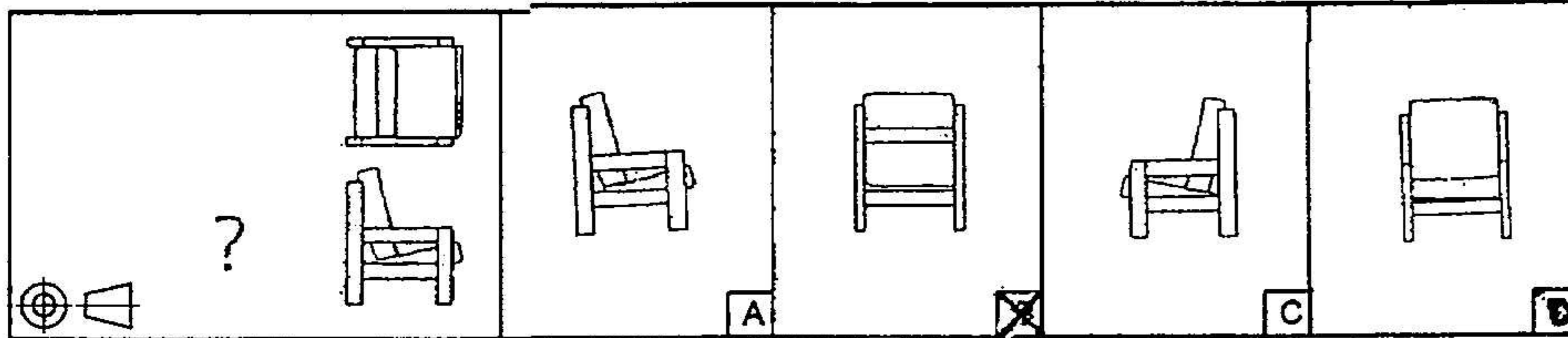


QUESTION 1.1

ONE VIEW IS MISSING IN THE DRAWING. SELECT THE CORRECT VIEW.

VRAAG 1.1

EEN AANSIG WORD WEGGELAAT IN DIE TEKENING. KIES DIE KORREKTE AANSIG.

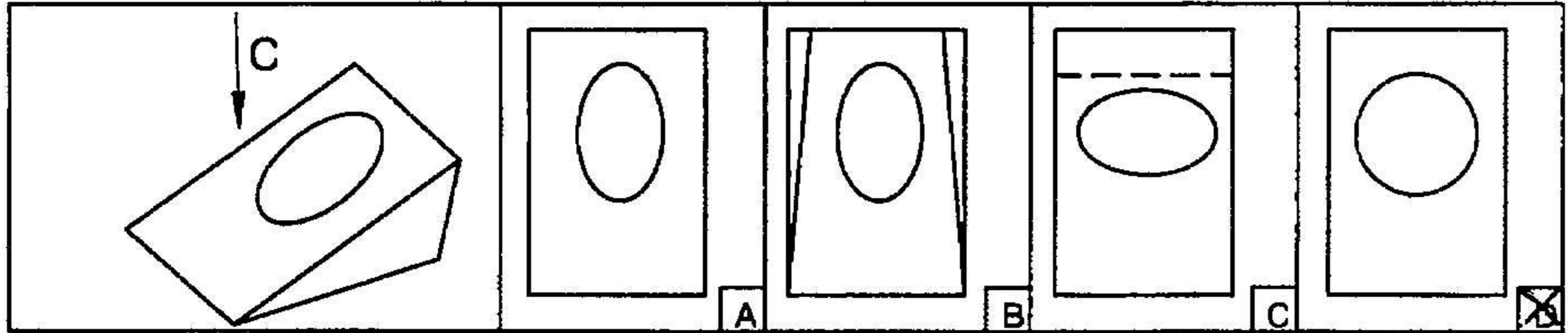


QUESTION 1.2

CHOOSE THE CORRECT VIEW AS SEEN IN DIRECTION C.

VRAAG 1.2

KIES DIE KORREKTE AANSIG SOOS GESIEN VANUIT RIGTING A.

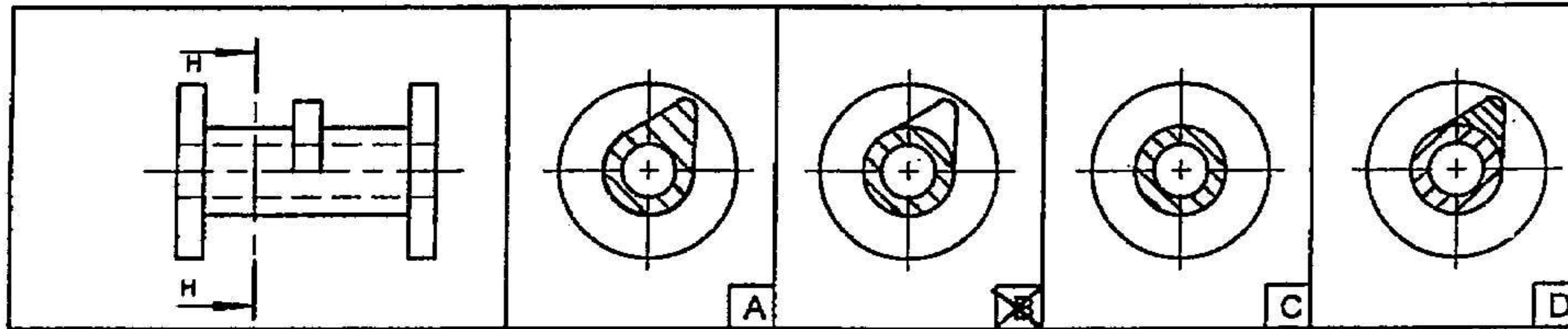


QUESTION 1.3

CHOOSE THE CORRECT SECTION FOR SECTION H-H.

VRAAG 1.3

KIES DIE KORREKTE DEURSNIT VIR SNIT H-H.

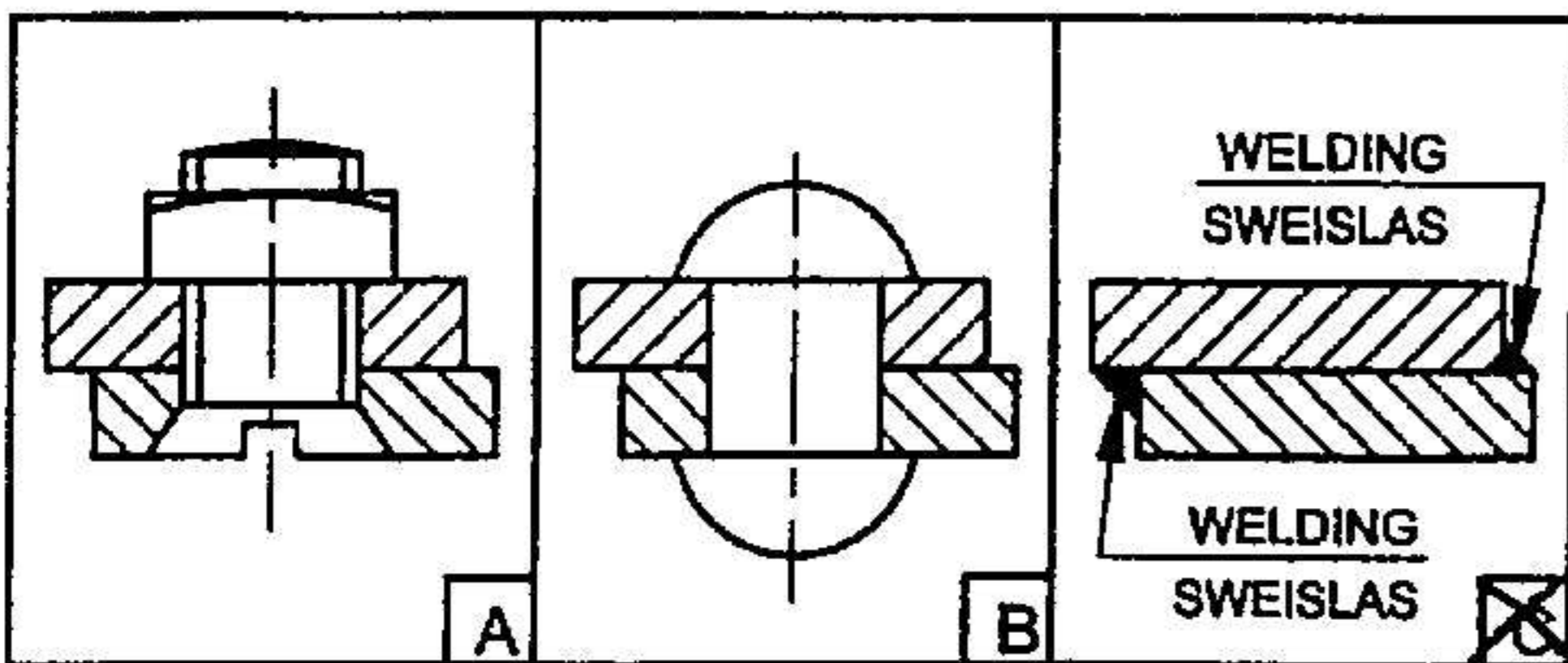


QUESTION 1.4

WHICH FASTENING METHOD PERMANENT ?

VRAAG 1.4

WATTER HEGMETODE IS PERMANENT ?

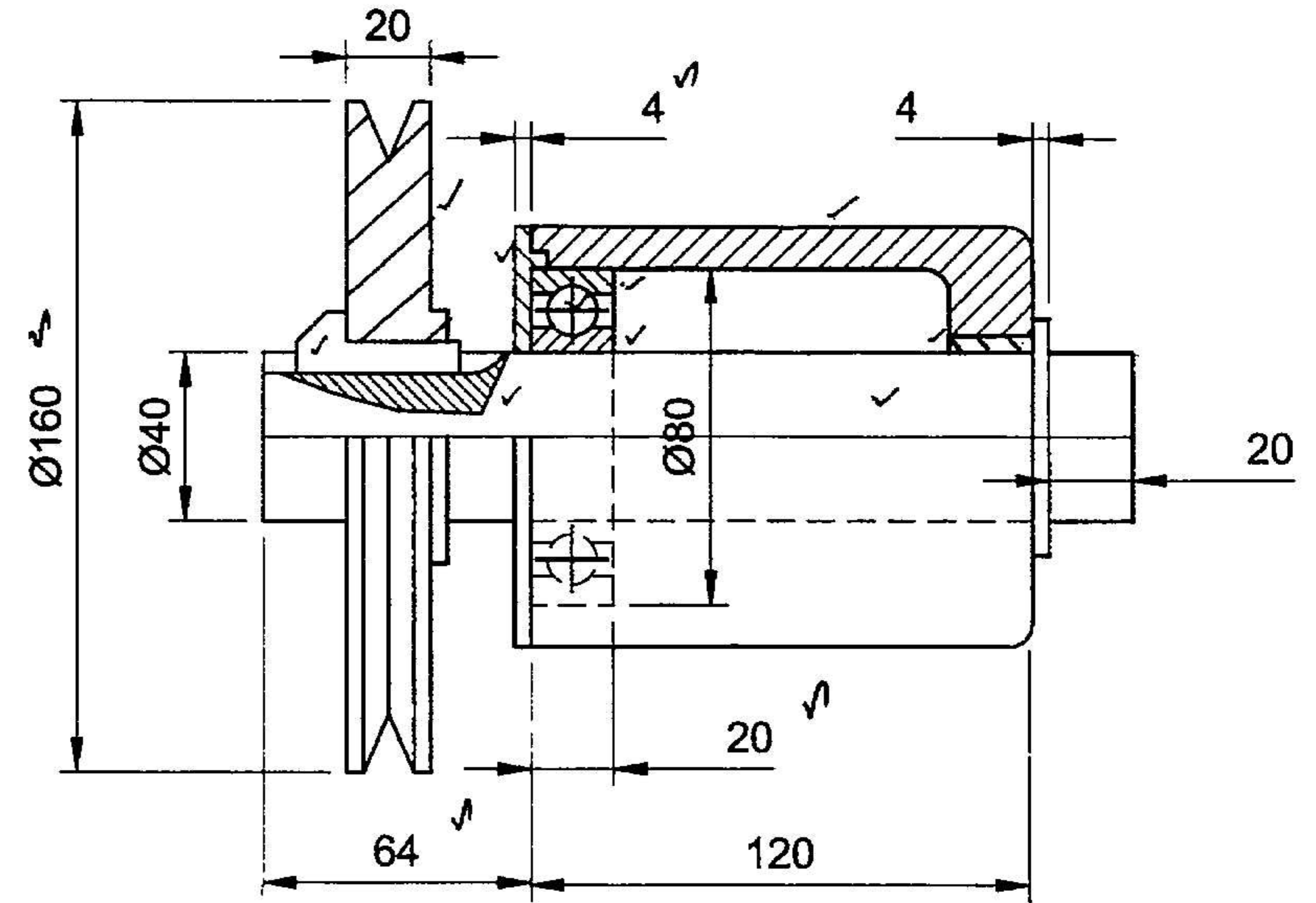


MARK ALLOCATION PUNTTOEKENNING			
1.1	1		
1.2	1		
1.3	1		
1.4	1		
TOTAL / TOTAAL	4		

QUESTION 2 / VRAAG 2

TECHNICAL DRAWING 711-1/2W HIGHER GRADE

TEGNEISE TEKENE 711-1/2W HOËR GRAAD



DRIVE PULLEY DRYFKATROL

QUESTIONS / VRAE	ANSWER / ANTWOORD	MARKS/PUNTE
2.1 TO WHAT SCALE IS THE DRAWING DRAWN ? 2.1 VOLGENS WATTER SKAAL IS DIE TEKENING GETEKEN ?	SCALE 1:2 SKAAL 1:2	1
2.2 MEASURE AND INSERT DIMENSIONS A TO D. 2.2 MEET EN VUL DIE ONTBREKENDE AFMETINGS A TOT D, IN.		2
2.3 DRAW A GIBHEAD KEY TO HOLD THE PULLEY IN POSITION. 2.3 TEKEN 'N NEUSSPY OM DIE KATROL IN POSISIE TE HOU.		3
2.4 COMPLETE ALL HATCHING ON THE DRAWING. 2.4 VOLTOOI ALLE ARSERING OP DIE TEKENING.		10
	TOTAL / TOTAAL	16

EXAMINATION NUMBER EKSAMENNOMMER

□ □ □ □ □ □ □ □ □ □

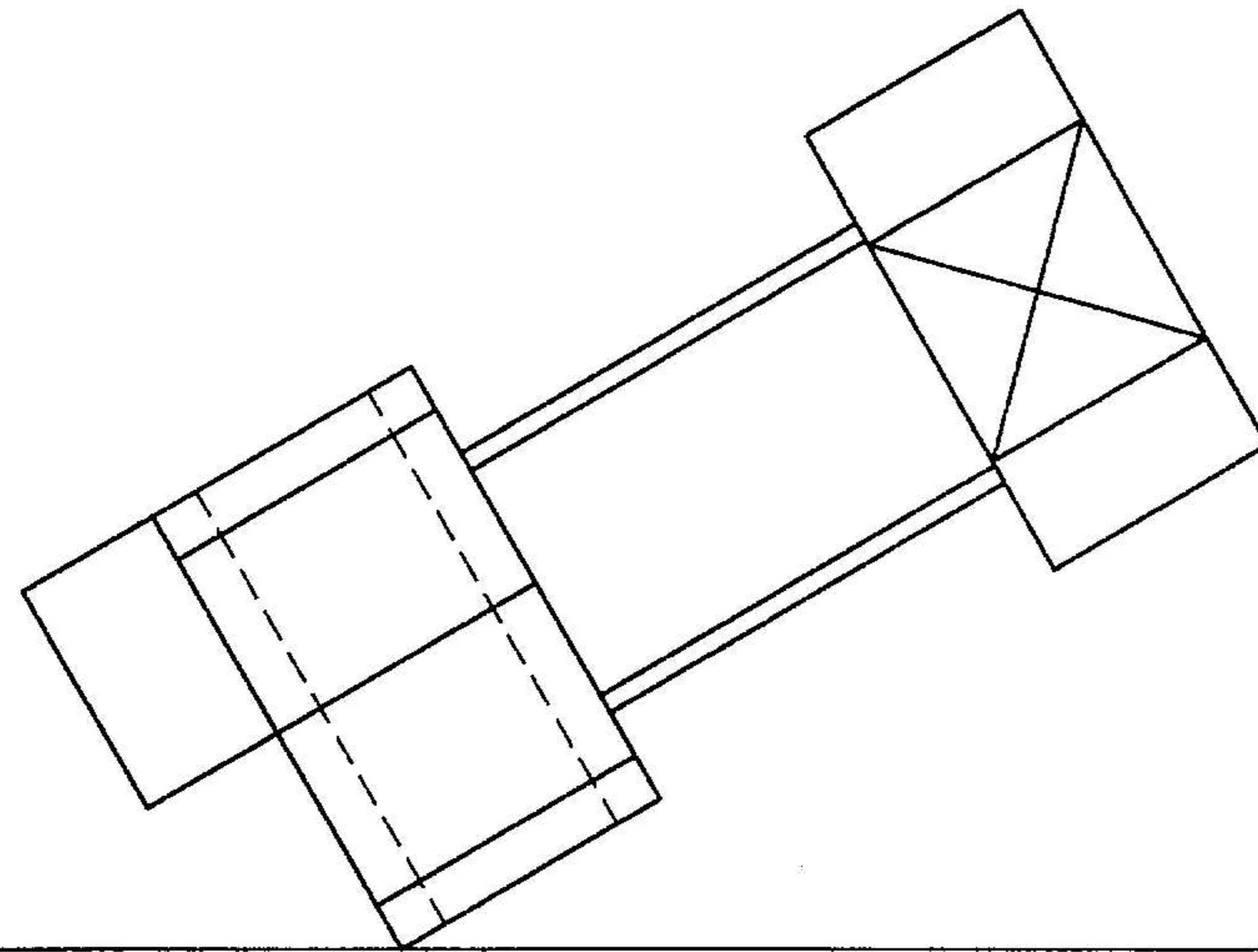
QUESTION 1 / VRAAG 1 & QUESTION 2 / VRAAG 2





MARK ALLOCATION
PUNTETOEKENNING

VP	4		
PERSPECTIVE/PERSPEKTIEF	29		
L-WORK/L-WERK	2		
TOTAL/TOTAAL	35		



PP/PV

PP/PV

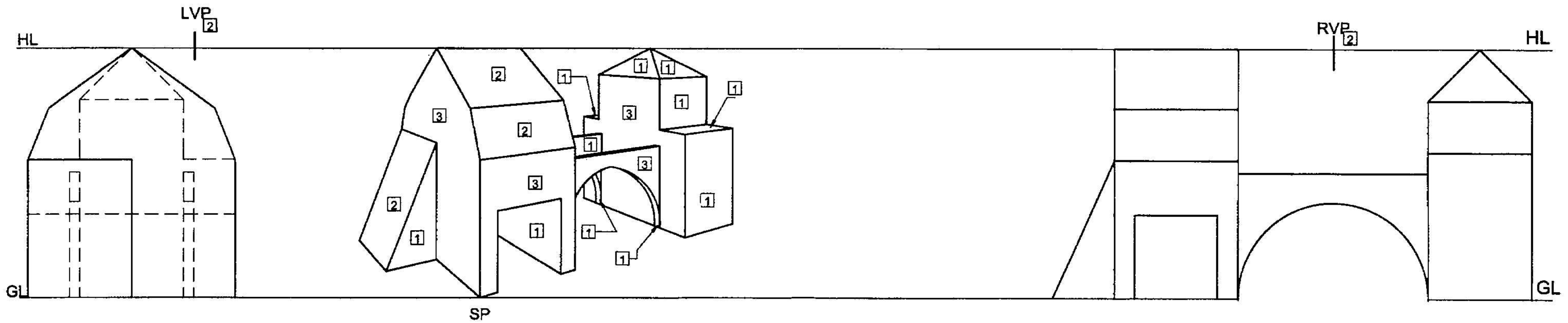
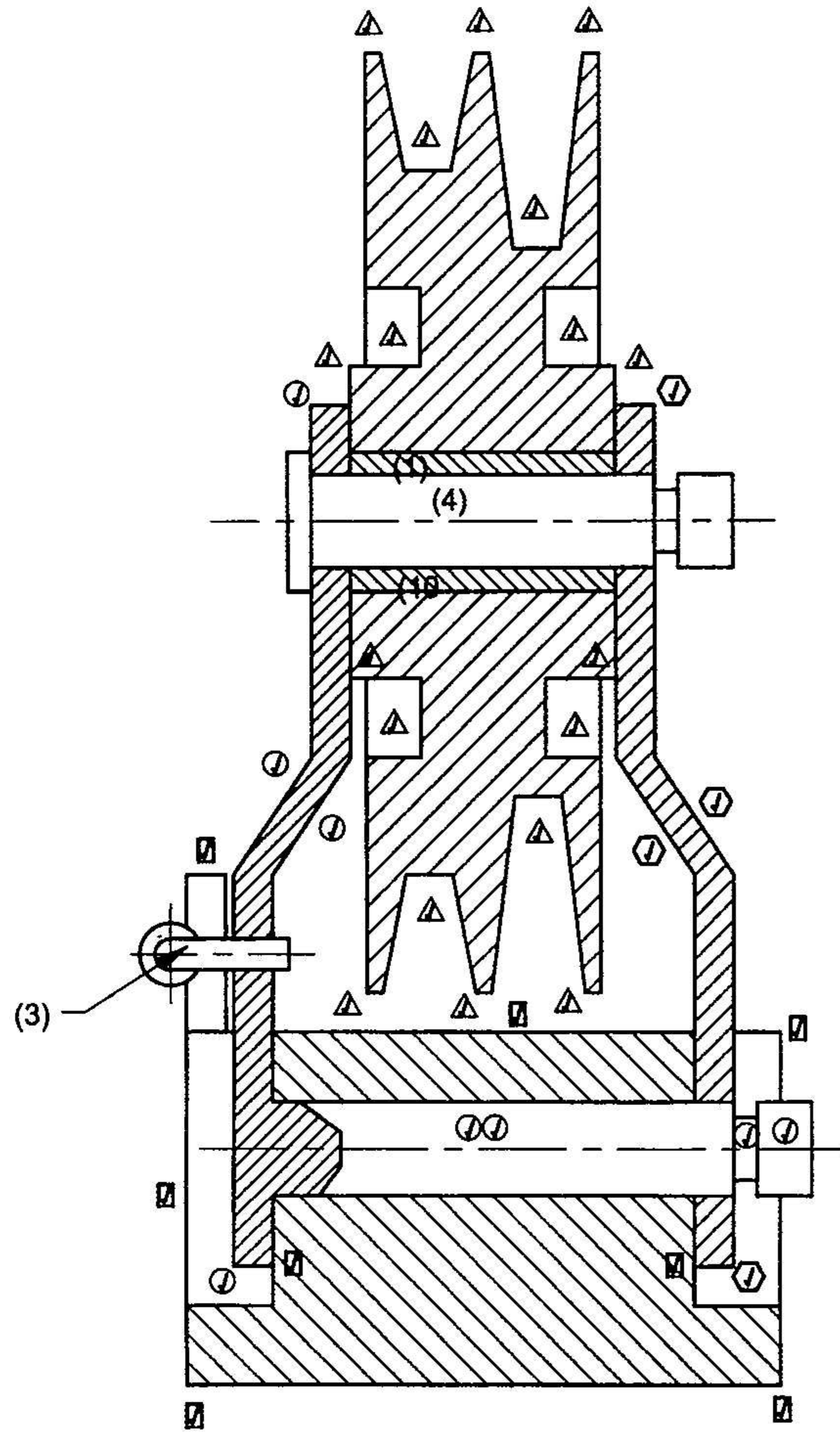


FIGURE 3 / FIGUUR 3

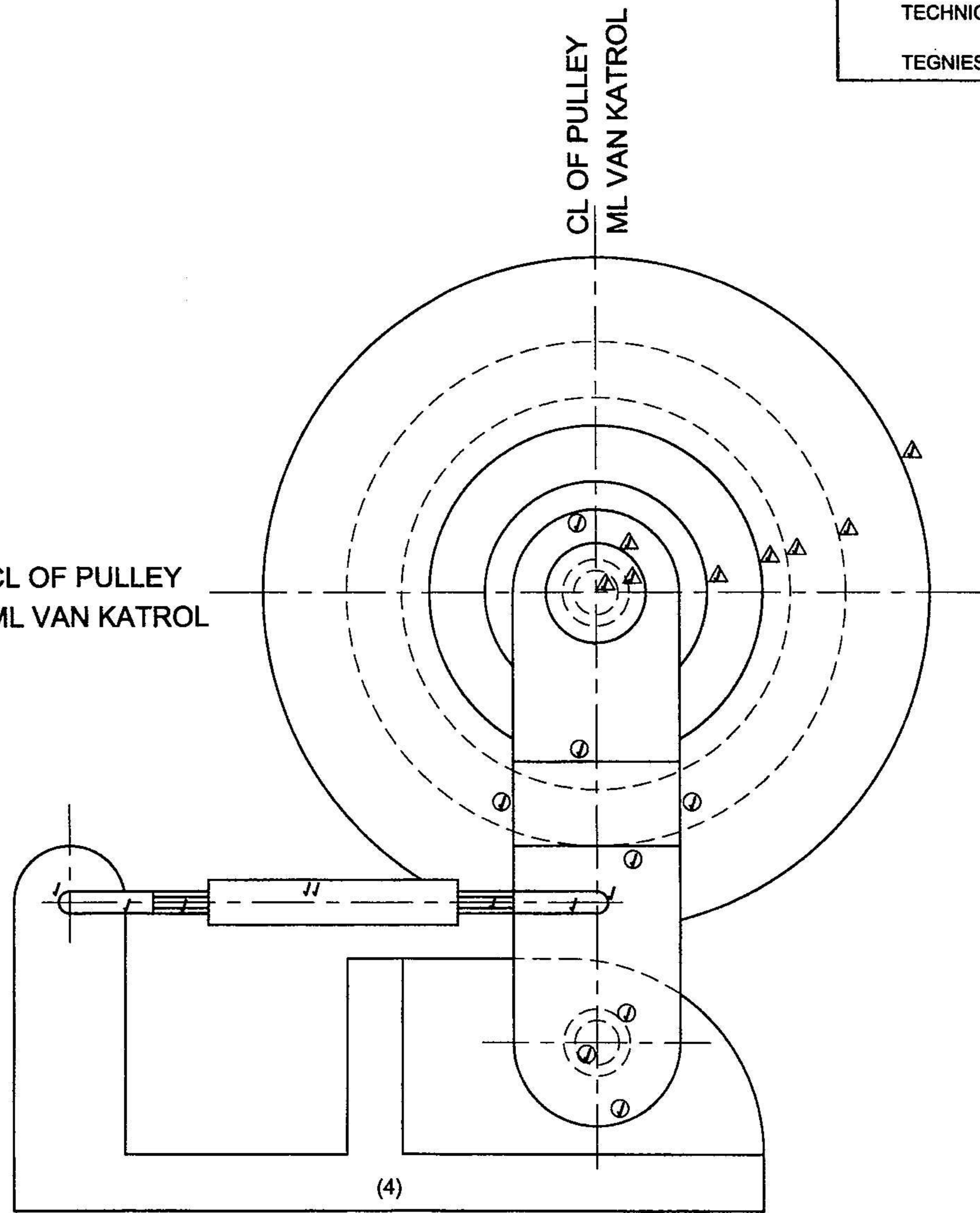
EXAMINATION NUMBER EKSAMENNUMMER

--	--	--	--	--	--	--	--	--	--	--

QUESTION 3 / VRAAG 3



CL OF PULLEY
ML VAN KATROL



CL OF PULLEY
ML VAN KATROL

MARK ALLOCATION / PUNTETOEKENNING		
FRONT VIEW / VOORAANSIG		
PULLEY AND PIN KATROL EN PEN	8	
LEVER / HEFBOOM	8	
SETSCREW / STELSKROEF	8	
BASE / BASIS	6	
SUBTOTAL / SUBTOTAAL	30	
RIGHT VIEW / REGTERANSIG		
PULLEY / KATROL	18	
SECTIONING / ARSERING	3	
PIN D / PEN D	4	
SECTIONING / ARSERING	1	
BUSH / BUS	2	
SECTIONING / ARSERING	1	
LEVER E / HEFBOOM E	4	
SECTIONING / ARSERING	1	
LEVER F / HEFBOOM F	8	
SECTIONING / ARSERING	3	
BASE / BASIS	9	
SECTIONING / ARSERING	2	
SETSCREW / STELSKROEF	3	
SECTIONING / ARSERING	1	
SUBTOTAL / SUBTOTAAL	60	
DIMENSIONS / AFMETINGS	4	
LINEWORK / LYNWERK	4	
TITLE AND SCALE TITEL EN SKAAL	2	
ASSEMBLY / SAMESTELLING	-14	
TOTAL / TOTAAL	100	

EXAMINATION NUMBER EKSAMENNUMMER

TITLE / TITEL :- PULLEY TENSIONER / SPANKATROL

SCALE / SKAAL:- 1:1