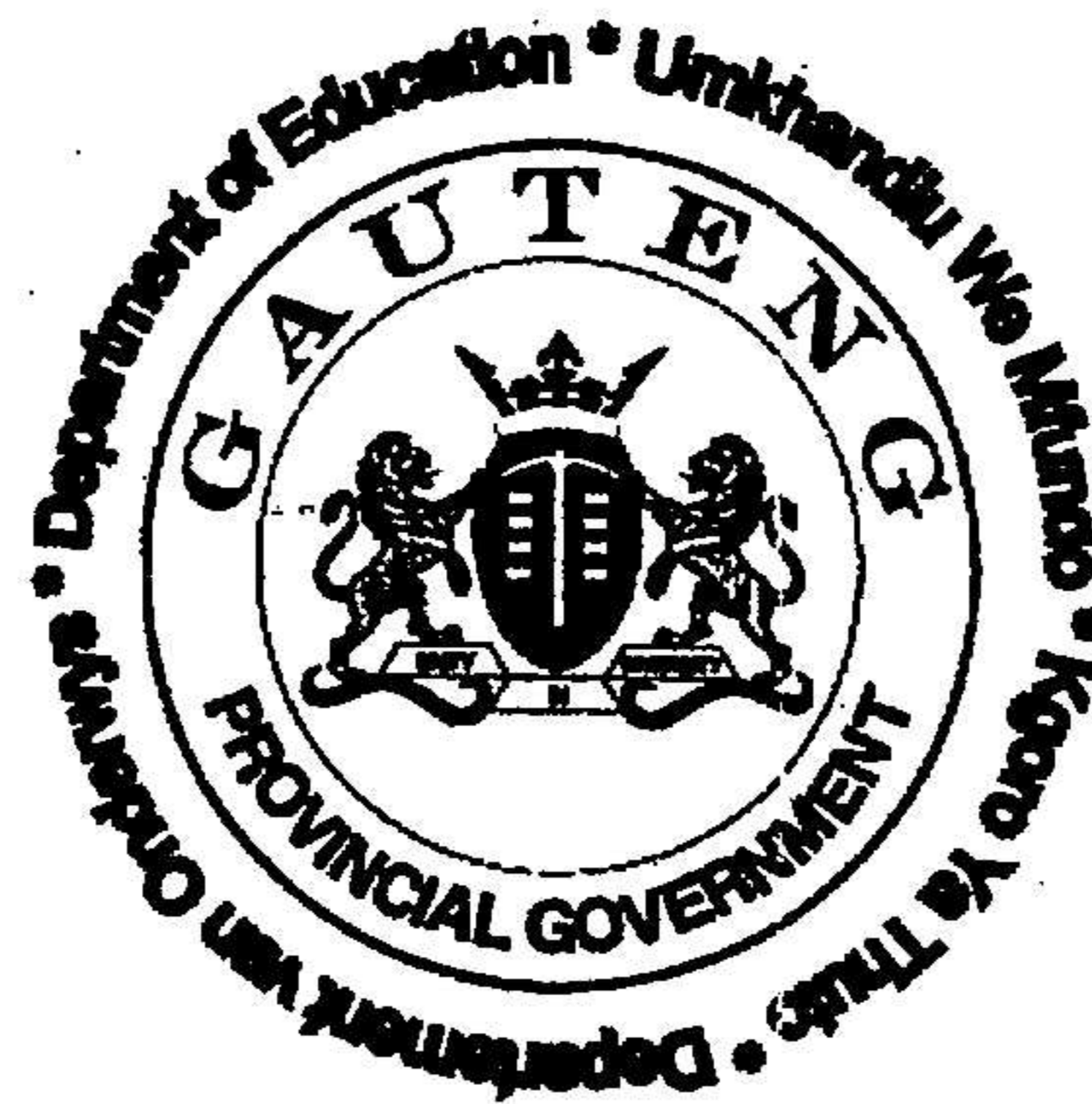


TECHNICAL DRAWING

HIGHER GRADE

PAPER TWO

711-1/2



2004

TEGNIËSE TEKENE

HOËR GRAAD

VRAESTEL TWEE

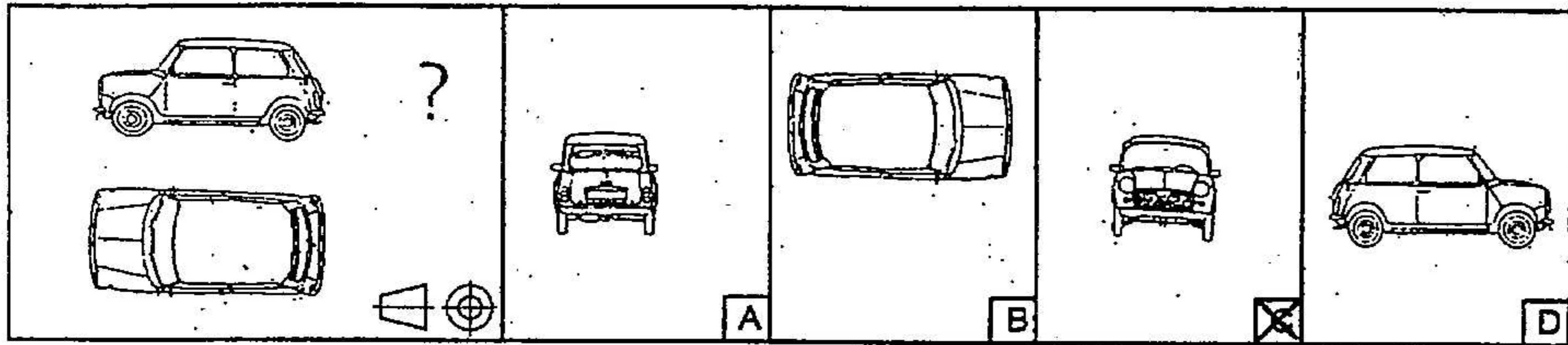
711-1/2

QUESTION 1.1

ONE VIEW IS MISSING IN THE DRAWING. SELECT THE CORRECT VIEW.

VRAAG 1.1

EEN AANSIG KORT IN DIE TEKENING. KIES DIE KORREKTE AANSIG.

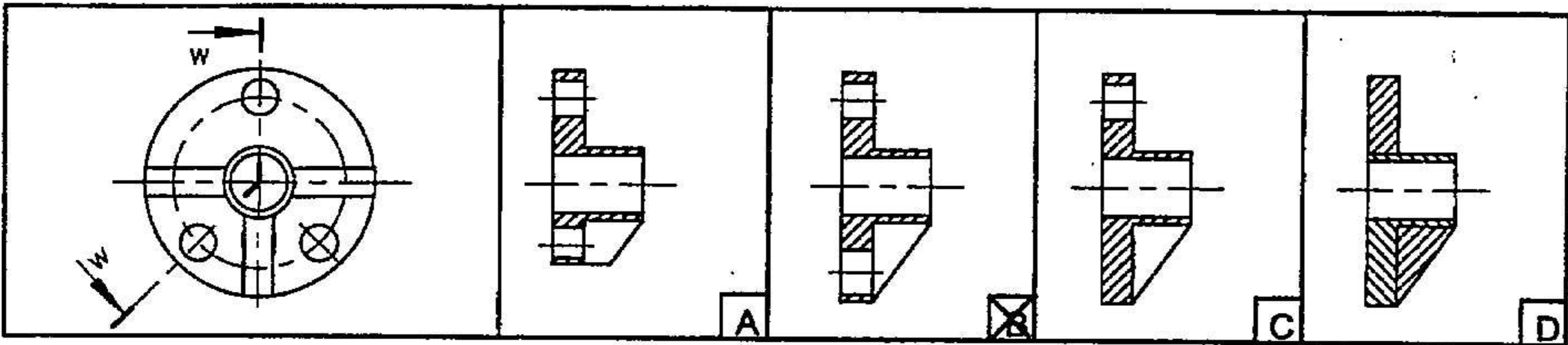


QUESTION 1.2

SELECT THE CORRECT SECTION FOR SECTION W-W.

VRAAG 1.2

KIES DIE KORREKTE SNIT VIR SNIT W-W.

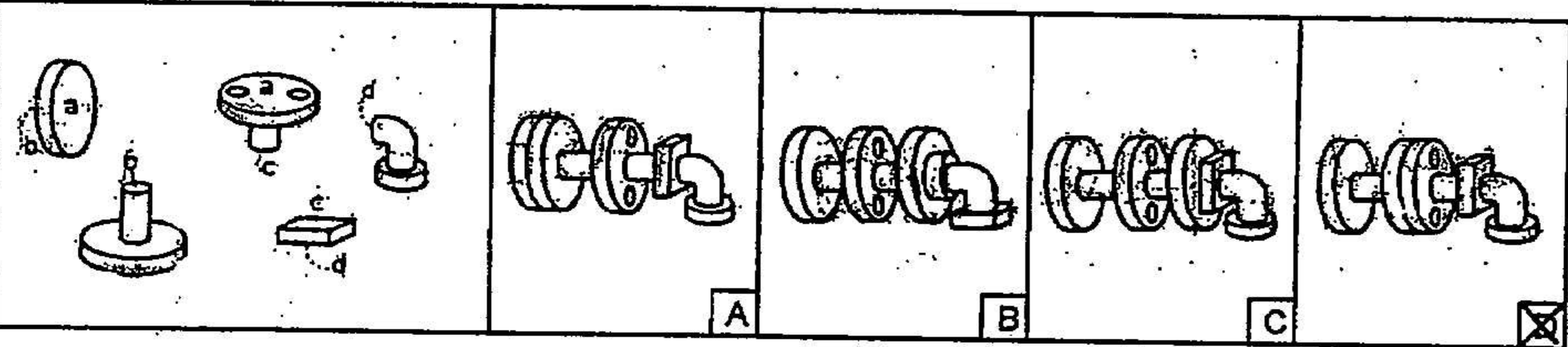


QUESTION 1.3

CHOOSE THE ASSEMBLY WHOSE COMPONENTS ARE JOINED CORRECTLY.

VRAAG 1.3

KIES DIE KORREKTE SAMESTELLING VAN DIE KOMPONENTE.

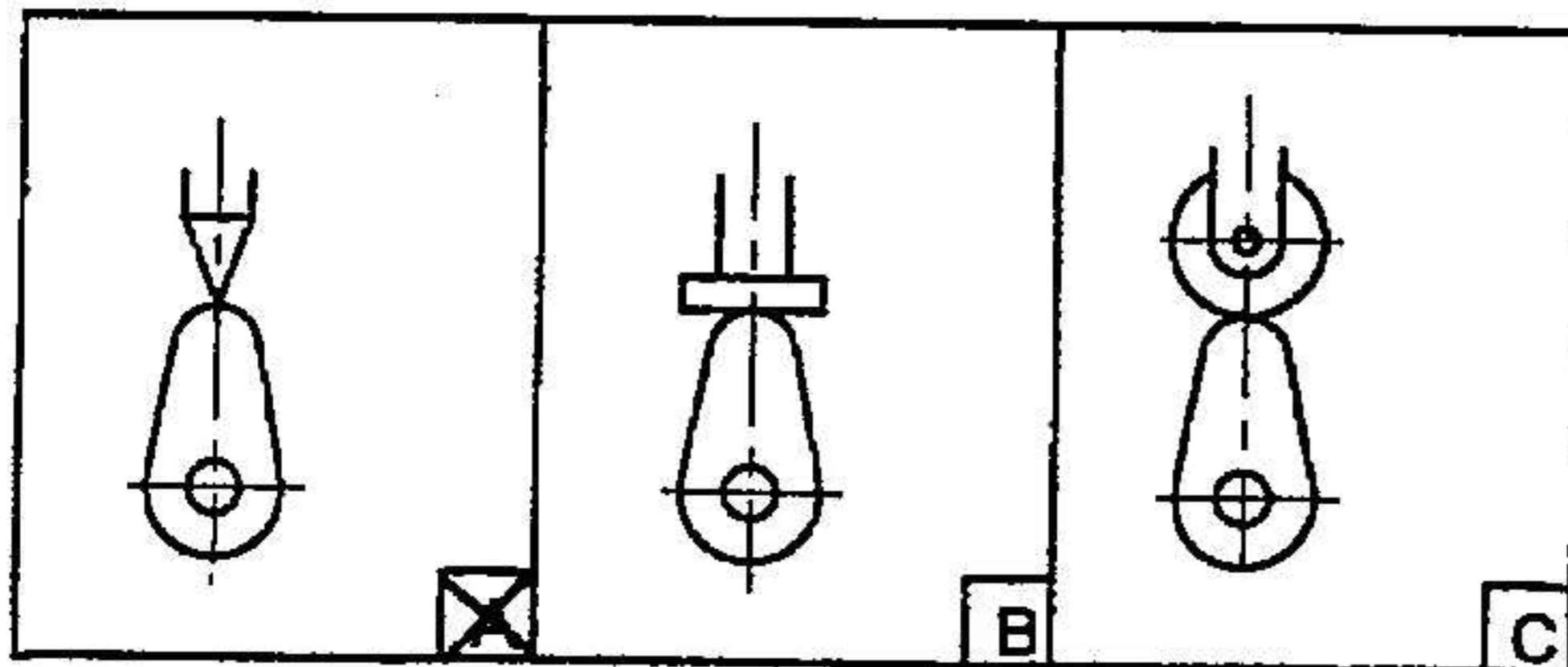


QUESTION 1.4

WHICH SKETCH SHOWS A WEDGE END FOLLOWER?

VRAAG 1.4

WATTER SKETS TOON N WIG NOKVOLGER?

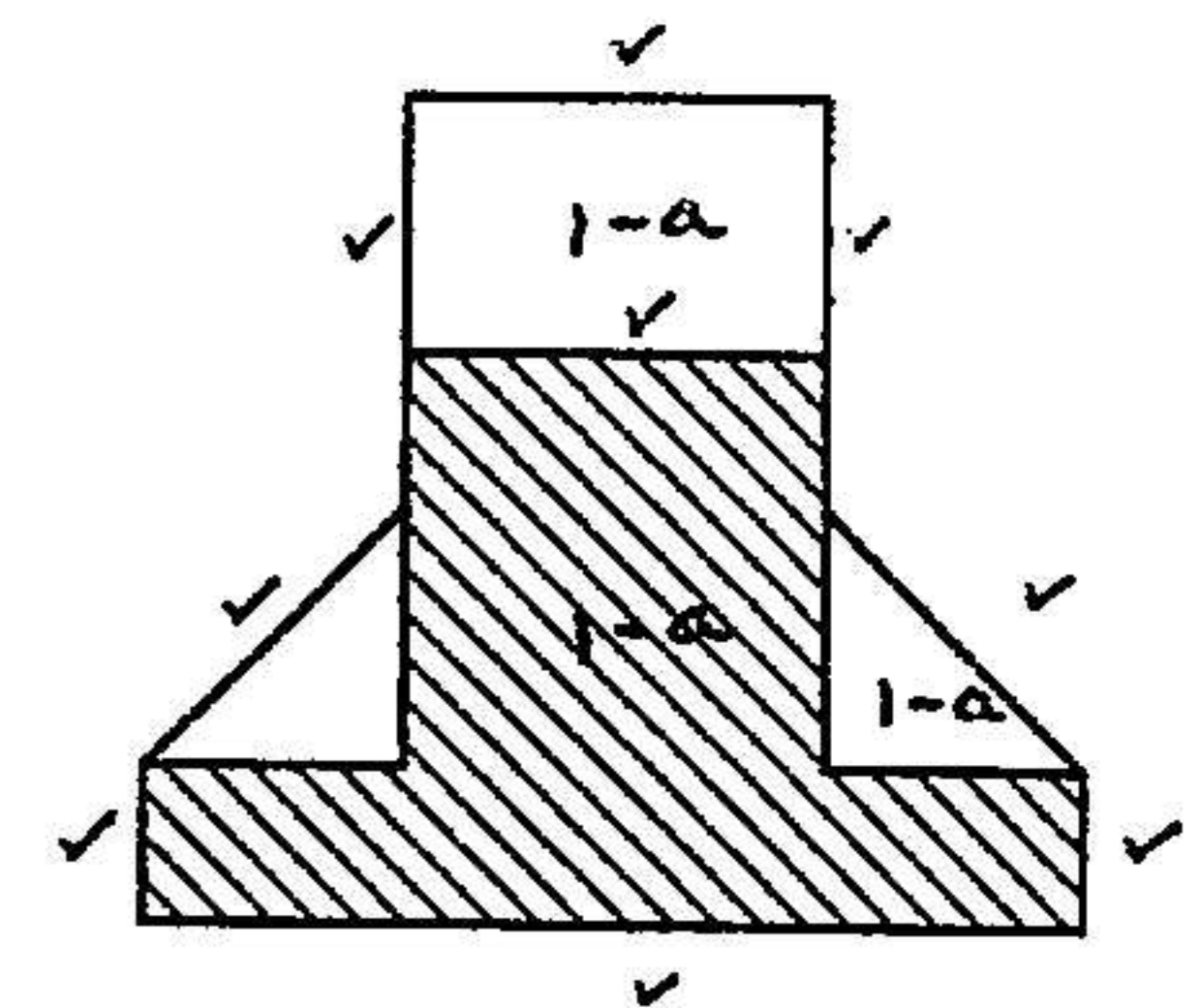
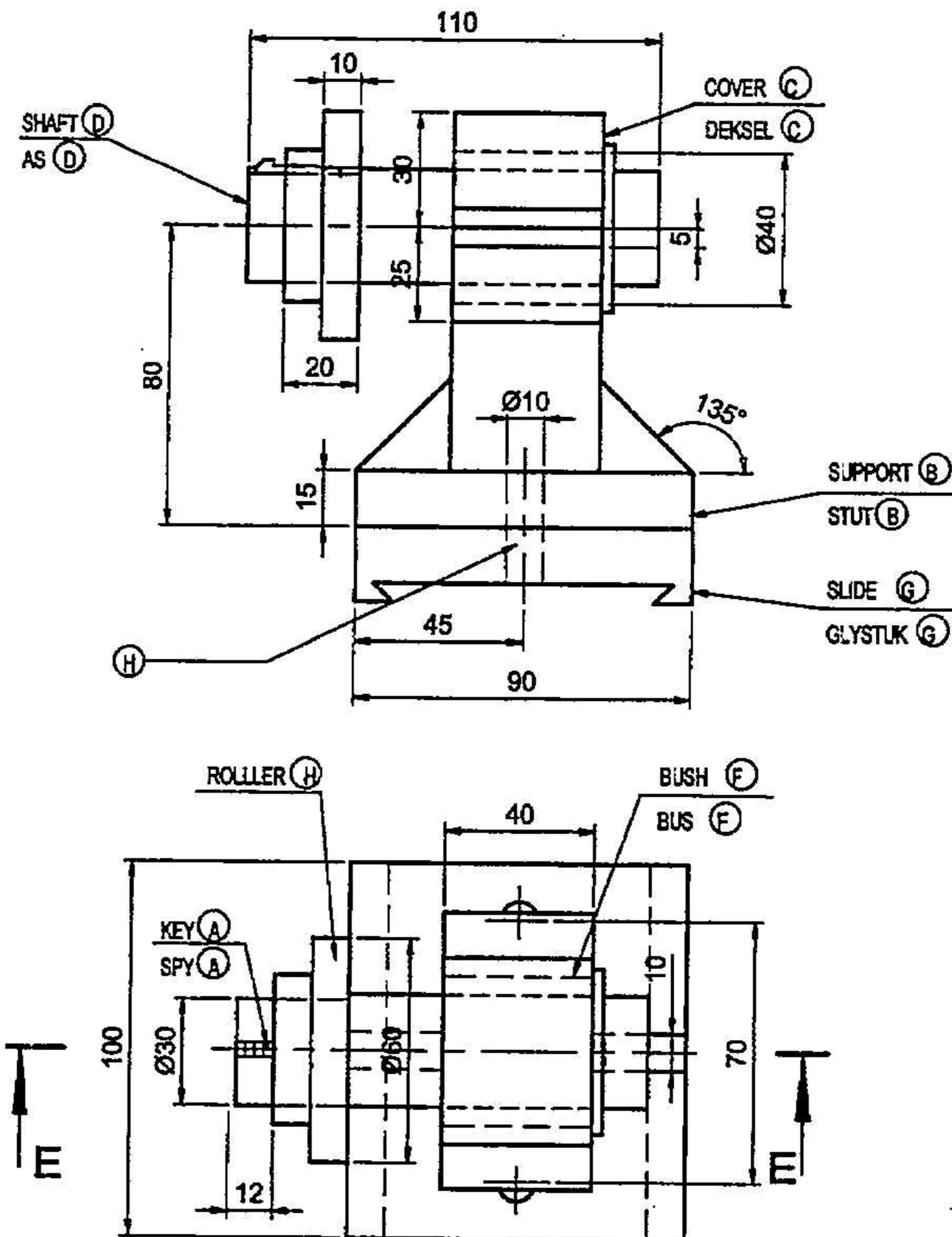


MARK ALLOCATION PUNTETOEKENNING			
1.1	2		
1.2	2		
1.3	2		
1.4	2		
TOTAL / TOTAAL			

QUESTION 2 / VRAAG 2

TECHNICAL DRAWING 711-1/2A HIGHER GRADE

TEGNIËSE TEKENE 711-1/2A HOËR GRAAD



SECTION E-E
SNIT E-E

MARK ALLOCATION PUNTETOEKENNING			
VIEW / AANSIG	12		
L-WORK / L-WERK	1		
TOTAL / TOTAAL	13		

ASSY DEVELOPMENTS
ASSY ONTWIKKELINGS

DRAWN: S. CASTING
DATE: 14 AUG 2003
REVISION: 5

SCALE: 1:2



QUESTIONS / VRAE	ANSWERS ANTWOORDE	MARKS PUNTE
2.1 HOW MANY COMPONENTS DOES THE ASSEMBLY CONSIST OF? 2.1 UIT HOEVEEL KOMPONENTE BESTAAN DIE SAMESTELLING?	7	1
2.2 WHAT DOES THE HIDDEN DETAIL AT H IN ITEMS B AND G REPRESENT? 2.2 WAT STEL DIE VERSTEEKTE DETAIL BY H IN ITEMS B EN G VOOR?	Ø10 HOLE Ø10 GAT	1
2.3 NAME THE KEY SHOWN AT A. 2.3 BENOEM DIE SPY AANGEDUI DEUR A.	GIB HEAD NEUSSPY	1
2.4 WHICH PROJECTION SYSTEM WAS USED? 2.4 WATTER PROJEKSIE SISTEEM IS GEBRUIK?	F.A.O.P. E.H.O.P.	1
2.5 DRAW TO SCALE 1:2 A SECTIONAL FRONT VIEW ON E-E OF ITEM B. 2.5 TEKEN VOLGENS SKAAL 1:2 N SNIT VOORAANSIG DEUR E-E VAN ITEM B.		13
TOTAL / TOTAAL		17

EXAMINATION NUMBER EKSAMENNOMMER

□ □ □ □ □ □ □ □ □ □ □ □ □ □ □ □

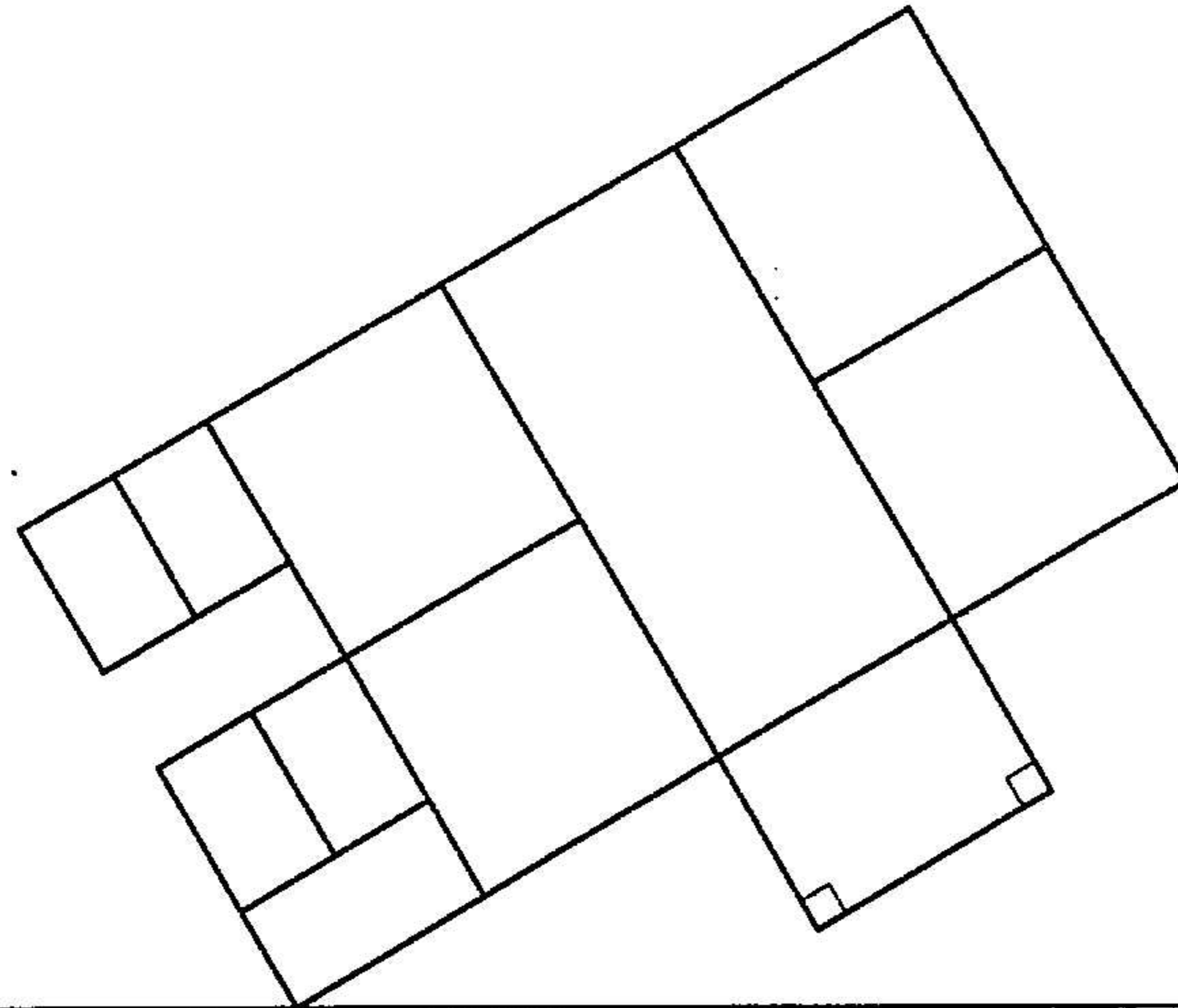
QUESTION 1 / VRAAG 1 & QUESTION 2 / VRAAG 2

ANSWER SHEET 1
ANTWOORDVEL 1



MARK ALLOCATION
PUNTETOEKENNING

VP	2	
PERSPECTIVE/PERSPEKTIEF	41	
L/WORK	2	
TOTAL/TOTAAL	45	



PP/PV

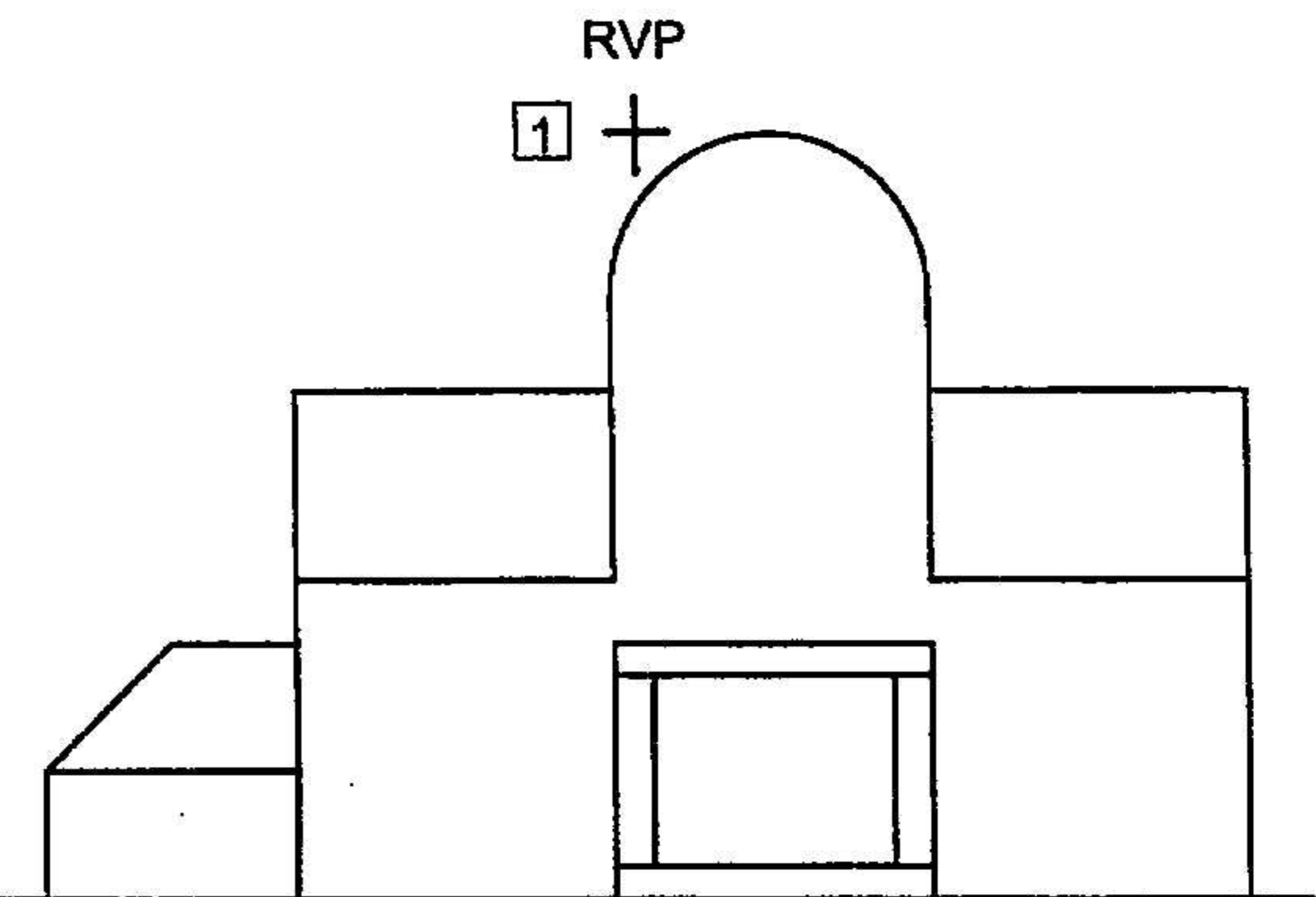
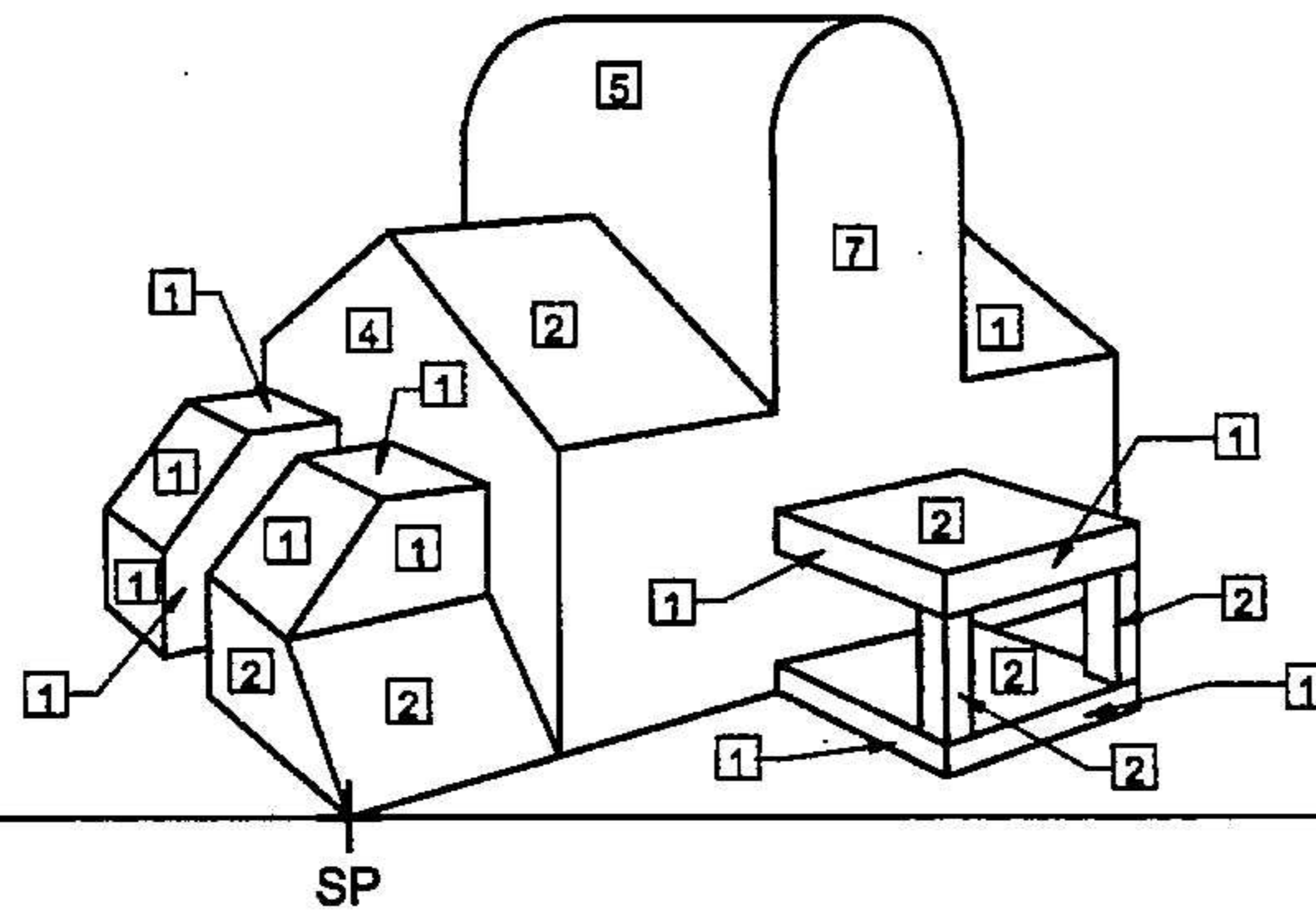
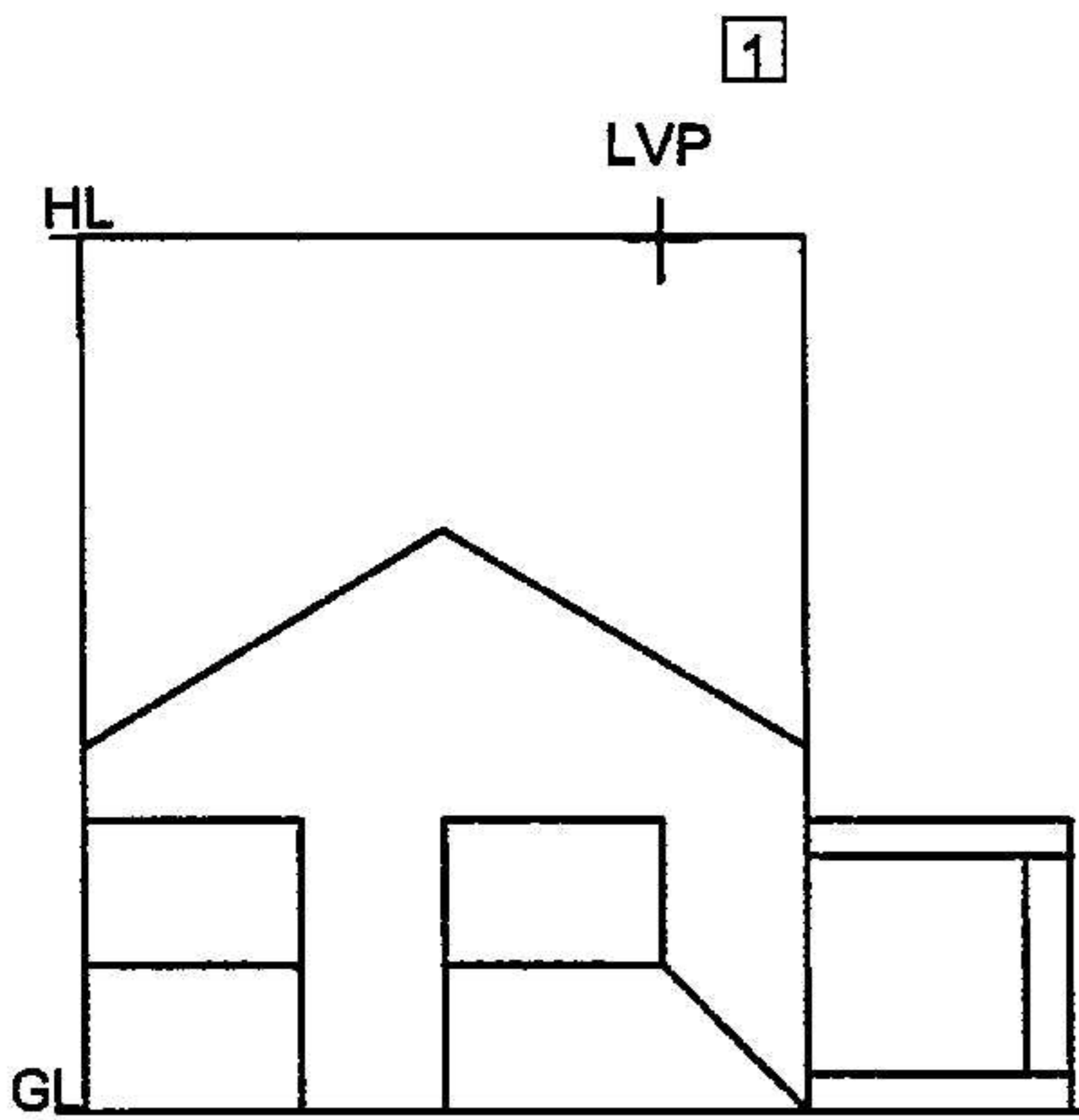


FIGURE 3 / FIGUUR 3

EXAMINATION NUMBER EKSAMENNOMMER

--	--	--	--	--	--	--	--

QUESTION 3 / VRAAG 3

ANSWER SHEET 2

ANTWOORDVEL 2

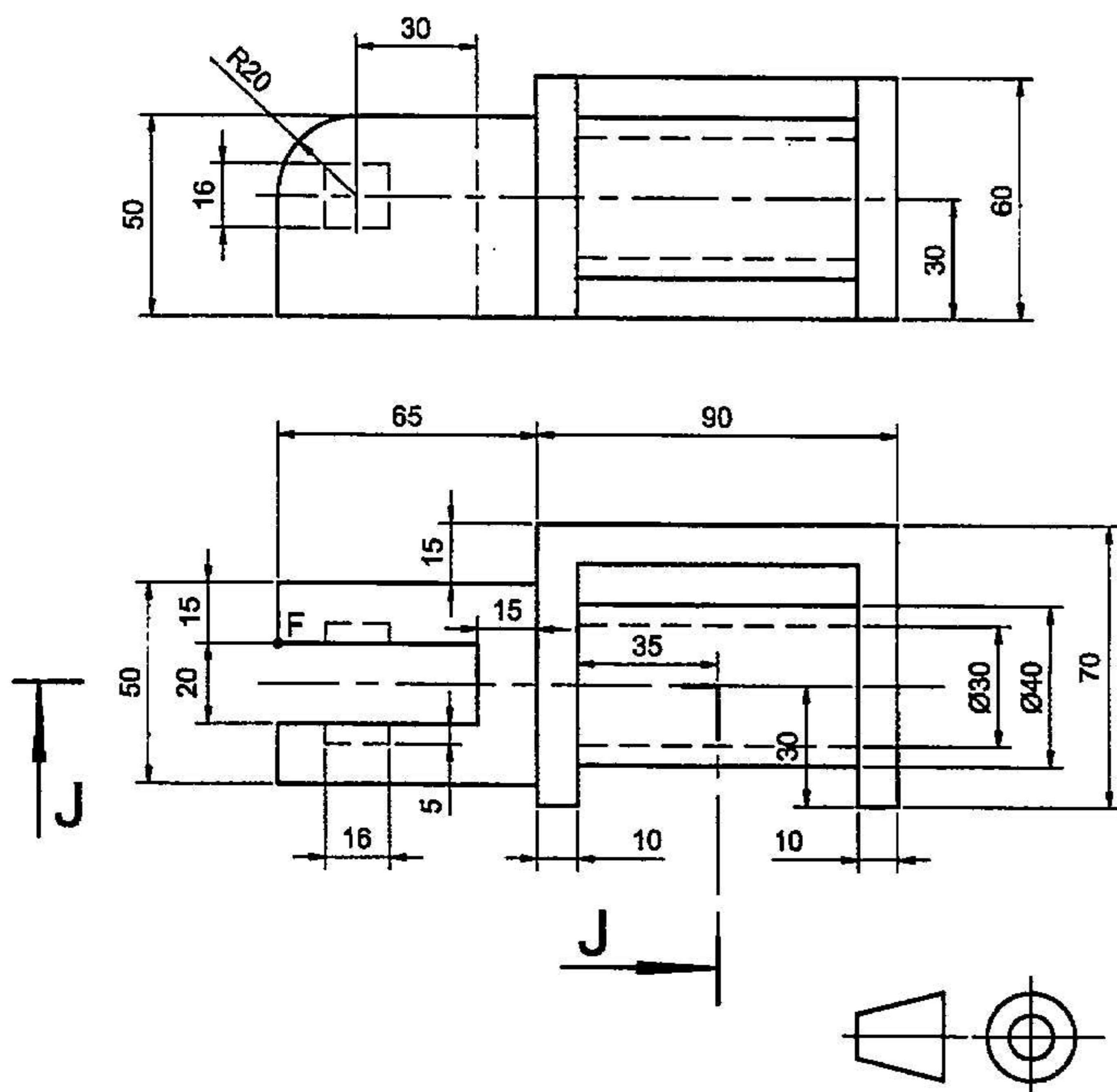
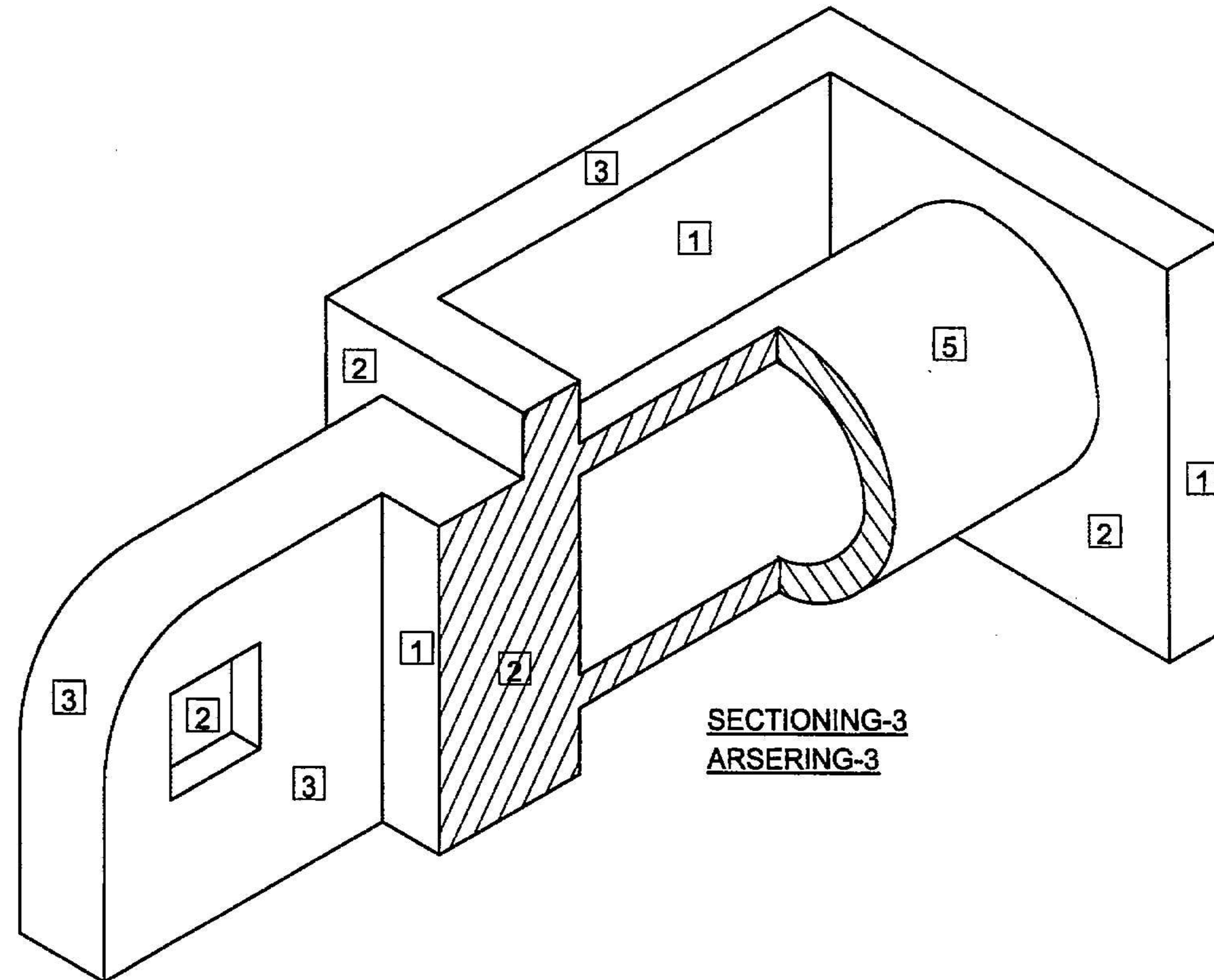


FIGURE 4 / FIGUUR 4



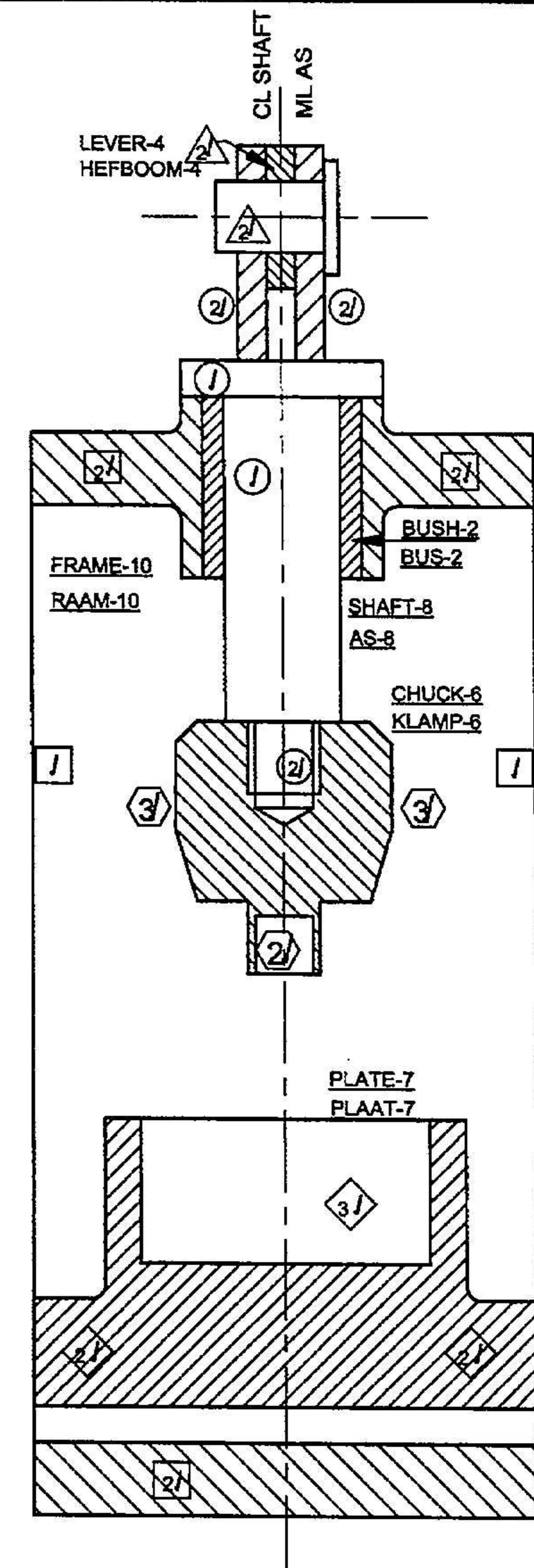
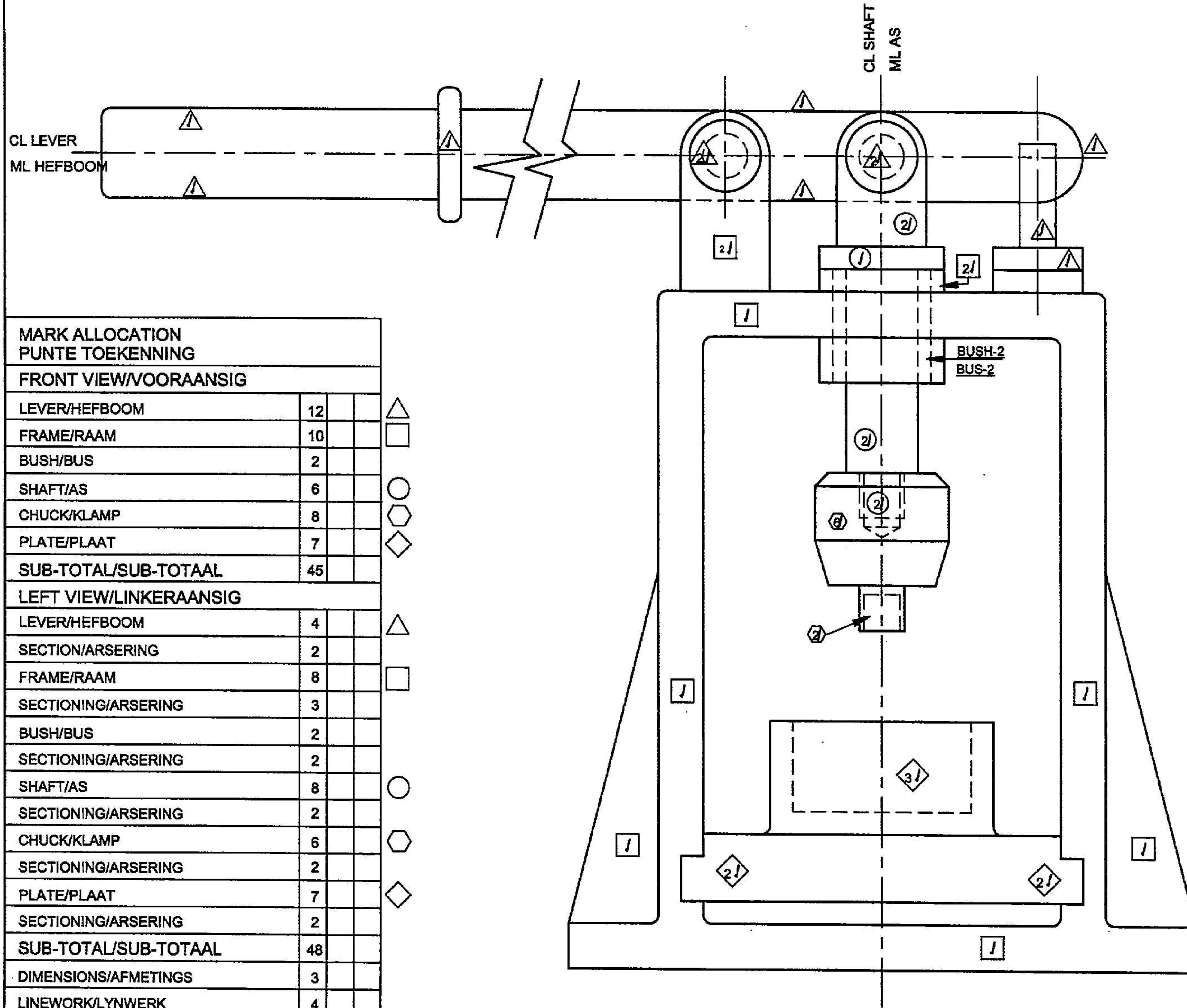
MARK ALLOCATION PUNTTOEKENNING	
ISOMETRIC/ISOMETRIES	28
L/WORK-L/WERK	2
TOTAL/TOTAAL	30

EXAMINATION NUMBER EKSAMENNUMMER

--	--	--	--	--	--	--	--	--	--

QUESTION 4 / VRAAG 4

ANSWER SHEET 3
ANTWOORDVEL 3



MARK ALLOCATION PUNTE TOEKENNING			
FRONT VIEW/VOORAANSIG			
LEVER/HEFBOOM	12		△
FRAME/RAAM	10		□
BUSH/BUS	2		
SHAFT/AS	6		○
CHUCK/KLAMP	8		⬡
PLATE/PLAAT	7		◇
SUB-TOTAL/SUB-TOTAAL	45		
LEFT VIEW/LINKERAANSIG			
LEVER/HEFBOOM	4		△
SECTION/ARSERING	2		
FRAME/RAAM	8		□
SECTIONING/ARSERING	3		
BUSH/BUS	2		
SECTIONING/ARSERING	2		
SHAFT/AS	8		○
SECTIONING/ARSERING	2		
CHUCK/KLAMP	6		⬡
SECTIONING/ARSERING	2		
PLATE/PLAAT	7		◇
SECTIONING/ARSERING	2		
SUB-TOTAL/SUB-TOTAAL	48		
DIMENSIONS/AFMETINGS	3		
LINEWORK/LYNWERK	4		
SUB-TOTAL/SUB-TOTAAL	7		
ASSEMBLY/SAMESTELLING	-10		
TOTAL/TOTAAL	100		

EXAMINATION NUMBER EKSAMENNUMMER

--	--	--	--	--	--	--	--	--	--

QUESTION 5 / VRAAG 5

**ANSWER SHEET 4
ANTWOORDVEL 4**