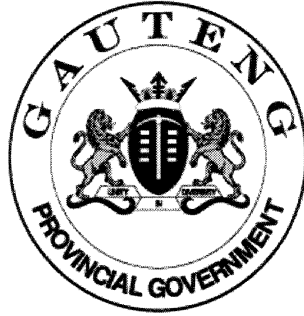


SENIOR CERTIFICATE EXAMINATION
SENIORSERTIFIKAAT-EKSAMEN



OCTOBER / NOVEMBER
OKTOBER / NOVEMBER

2004

SISWATI LULWIMI LWESIBILI
LIZINGA LELILULA

Liphepha Lesitsatfu

SG

932-2/3

6 pages

siSWATI SECOND LANGUAGE SG: Paper 3



COPYRIGHT RESERVED / KOPIEREG VOORBEHOU
APPROVED BY UMALUSI / GOEDGEKEUR DEUR UMALUSI



LITIKO LEMFUNDVO LASEGAUTENG
KUHLOLWA KWEBANGA LESHUMI NAMBILI

SISWATI LULWIMI LWESIBILI
LIZINGA LELILULA
(Liphepha Lesitsatfu)

SIKHATSI: 2 ema-awa

EMAMAKI: 80

CAPHELA:

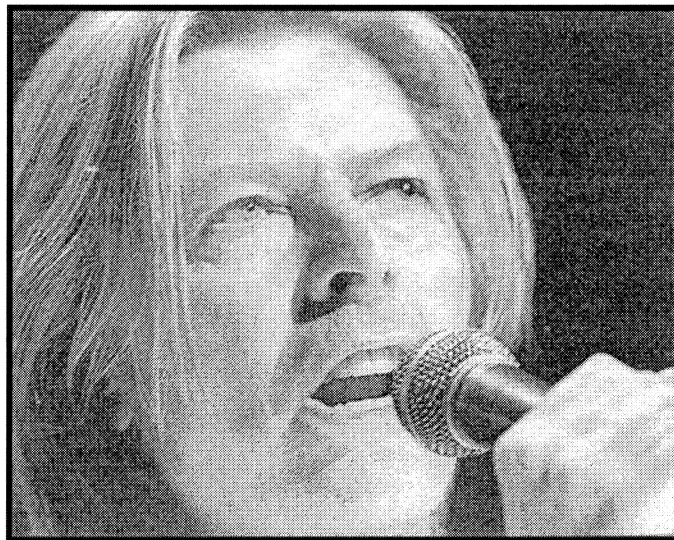
- Bhala ngesandla lesifundzekako.
 - Phendvula yonkhe imibuto ngesiSwati lesamukelekile.
 - Landzela imigomo nemitsetfo yaleso naleso sigaba.
-

SIGABA A

UMBUTO 1

Khetsa sihloko sibe SINYE kuleti letilandzelako ubhale ngaso kugcwale emakhasi LAMABILI.

- 1.1 **Impheasantfo lengingeke ngayikhohlwa.** Coca indzaba yakho ubhekise kunati titfombe letilandzelako.





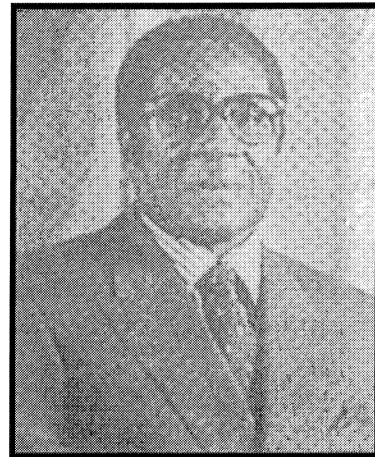
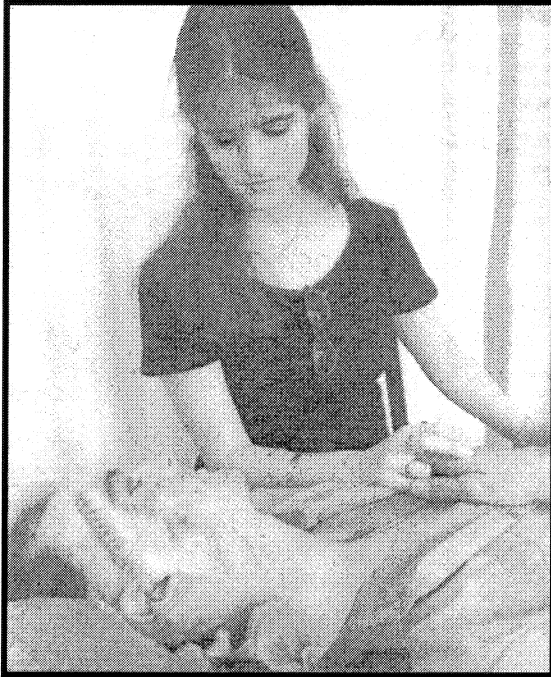
- 1.2 **Kuhlukunyetwa kwebantwana.** Ngenca yekwandza kwekuhlukunyetwa kwebantwana, ngabe batali bafanele yini kukuvumela lokwenteka kulesitfombe? Yini lengentiwa nguHulumeni kute lesento lesimbi kangaka singachubeki?



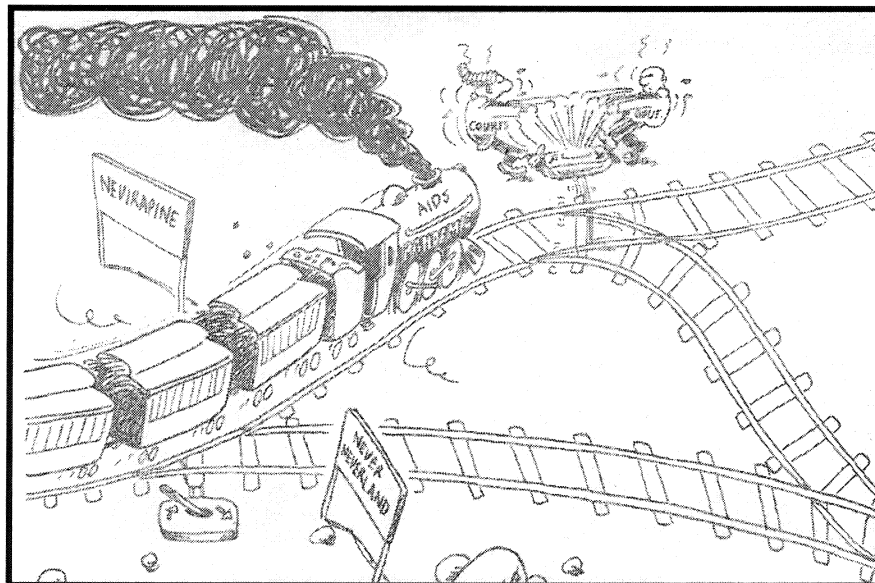
- 1.3 **Tekuvakasha kuleli laseNingizimu Afrika.** Coca ngekubaluleka kwetekuvakasha nendlela letingatfutfukiswa ngayo eNingizimu Afrika.

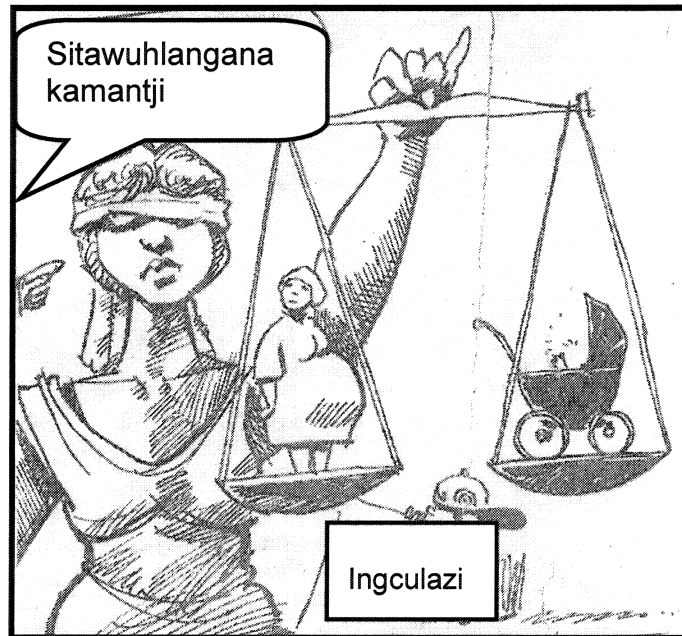
- 1.4 Ngabe kusengiyo yini indlela yekubusa live yini lena?
Buka tiffombe letilandzelako bese uphawula lokutsandzako nalongakutsandzi

KUHLASELWA KWEMAFAMA EZIM



- 1.5 Bukisisa kahle nati tiffombe bese uphawula ngesifo sengculazi. Landzela lemigomo:
- 1.5.1 Yini lengentiwa nguHulumeni kute kuphephe naba bantfwana labangenacala?
 - 1.5.2 Yini lengentiwa beLitiko leteMphilo?
 - 1.5.3 Yini lengentiwa ngumphakatsi kute leligciwane lingahambi ngesivinini?





EMAMAKI ESIGABA A: 1x40=[40]

SIGABA B

UMBUTO 2

Khetsa sihloko sibe SINYE ubhale ngaso kugcwale likhasi LINYE.

- 2.1 Ungulomunye walaba labasesifombeni. Bhalela umngane wakho **incwadzi** umcocele ngako konkhe lokwenteka.



- 2.2 Bhalela umphatsi weNyunivesi loyitsandzako **incwadzi** ucele sikhala sekufundza emnyakeni lotako. Veta tifundzo lotimisele kutenta.
- 2.3 Munye webafundzi lofundza naye utabe anemcimbi wekuvaleliswa esikoleni senu ngoba atfole umfundzate wekuyofundzela budokotela eMelika. Bhala phasi **inkhulumo** lotayikhuluma ngalolusuku lwekuvaleliswa kwakhe.

EMAMAKI ESIGABA B: 1x20=[20]

SIGABA C

UMBUTO 3

Fundzisisa kahle letihloko letilandzelako bese ubhala ngaSINYE sato.

- 3.1 Tiphatsimandla temfundvo betihlangene mayelana nelikhambi lekuncoba kusetjentiswa kwetidzakamiva etikolweni. Wena bewungumabhalane walowo mhlango. Bhala **emaminithi** alowo mhlango.
- 3.2 Uhlala kulinye lemalokishi aseSoweto. Lawuhlala khona kukhona inkinga yagezi lohanjiswa kuhhusha kwemoya nobe lidvuma lokungasho lutfo. Bhala **imemorandamu** watise sikhungo lesiphakela gezi.

EMAMAKI ESIGABA C: 1x20=[20]

EMAMAKI ASAWONKHE: 80