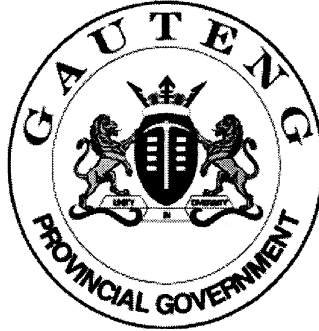


**SENIOR CERTIFICATE
EXAMINATION
*SENIORSERTIFIKAAT-EKSAMEN***



**FEBRUARY / MARCH
*FEBRUARIE / MAART***

2007

**ISIZULU ULIMI
LWEBELE
IZINGA ELIPHANSI**

Iphepha Lesithathu

SG

123-2/3

ISIZULU FIRST/PRIMARY LANGUAGE SG: Paper 3



123 2 3

SG

**7 pages
7 bladsye**

X05



**COPYRIGHT RESERVED / KOPIEREG VOORBEHOU
APPROVED BY UMALUSI / GOEDGEKEUR DEUR UMALUSI**



UMNYANGO WEMFUNDO WASEGAUTENG
UKUHLOLWA KWEBANGA LESHUMI NAMBILI

ISIZULU ULIMI LWEBELE
IZINGA ELIPHANSI
(Iphepha Lesithathu)

ISIKHATHI: 2 amahora

IMIKLOMELO: 80

IMIYALO:

- Leli phepha linezigaba ezintathu A, B, no-C.
- Esigabeni A khetha uphendule umbuzo owodwa.
- Esigabeni B kunemibuzo emibili khetha isihloko esisodwa embuzweni ngamunye.
- Esigabeni C khona phendula umbuzo owodwa vo.

ISIGABA A

Kulesi sigaba phendula umbuzo OWODWA VO bese ubhala indaba ngawo engaba ikhasi nengxenye noma amagama angama – 250 – 300.

UMBUSO 1

1.1 Xoxa ngezinkinga ezikhungethe ezemfundo ezenza izinga lokuphathwa kahle kwabafundi kanye noThisha lehle ezikhungweni lapho kufundiswa khona. Veza nezisombululo.

1.2 **Ukuvota Noma Ukungavoti**

Ucabanga ukuthi kubalulekile yini ukuvota?

Bhala indaba lapho uzophawula khona ukuthi kungani abantu bafanele ukuvota noma ukungavoti.

1.3 Bhekisisa lesi sithombe ngezansi bese ubhala indaba ngemicabango ekufikelayo.



- 1.4 Akusangatshazwa ukuthi akufanele umholi ahlale aphaathe isikhathi eside, ngoba lokho kudala izinkinga ezweni lelo aliphethe: Fakazela lo mbono?
- 1.5 Iningi labantu linemicabango emihle nemnandi ngezinto ezazenzeka beseyizingane. Bhala-ke indaba uchaze ngemicabango engeke yaphela emgodweni wakho ngenkathi useyingane. Yiphe isihloko indaba yakho.

IMIKLOMELO YESIGABA A: [30]

ISIGABA B

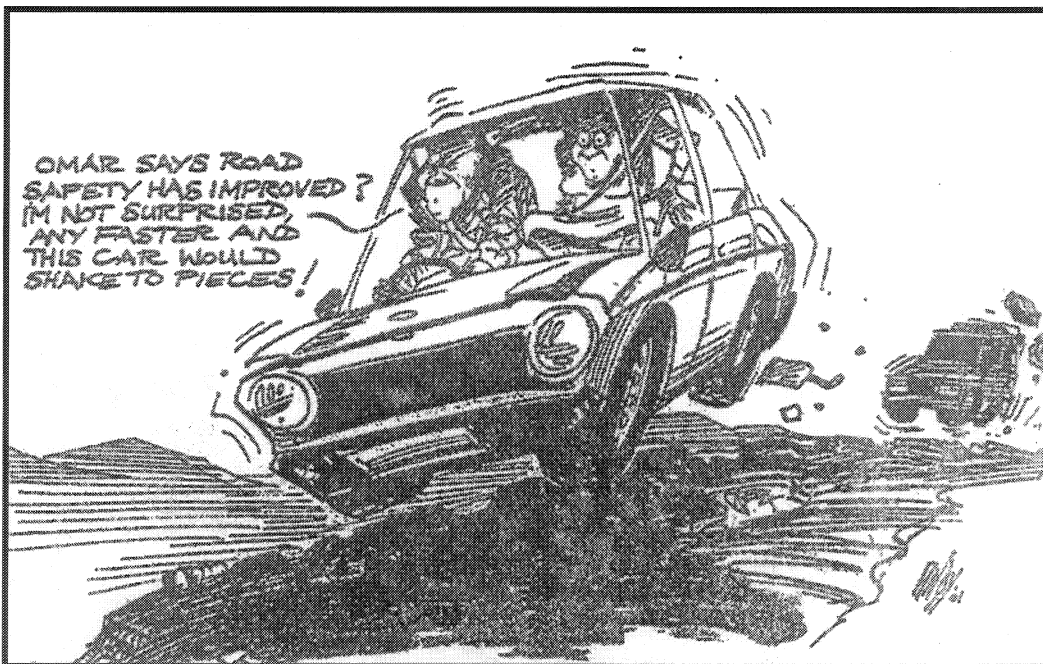
UMBULO 2

Khetha isihloko **esisodwa** phakathi kwalezi ezilandelayo: Ubhale kugcwale ikhasi elilodwa noma amagama ayi-150 – 200. .

- 2.1 Uhambo lwakho phesheya uyochitha amaholide kaDisemba luphazanyiswe yi Tsunami. Usinde ngokulambisa, Bhalela-ke umfowenu/dadewenu umchazele ngale mpicabadala uveze namandla oMdali okusindisile.
- 2.2 Usuqedile ukuqeqeshwa ukuthi ube nguthisha. Ngenhlanhla esikoleni esiduze nakini kufuneka uthisha onalezi ziqu osanda kuzithola: Bhalela ngqo uThishanhloko wakuleso sikole ucele isikhundla:

Kulo mbuzo khetha isihloko esisodwa okubhalayo kufanele kugcwale ikhasi elilodwa.

- 2.3 Bhekisisa lesi sithombe bese ubhala incwadi yesikhalazo (Memorandum) uyibhekise kuNgqongqoshe ophethe ezemigwaqo nezokuthutha.



- 2.4 Bhala ingxoxo phakathi kukamama nendodakazi yakhe mayelana nomehluko wokuziphatha kwamantombazana anamhlanje nawasendulo.

[15]

UMBUZO 3

- 3.1 Umngane wakho ukucelile ukuba ube yisikhulumi esiqavile emcimbini wakhe wokwemula: Bhala phansi konke oyokukhuluma bese umbhalela ifeksi uyithumele.
- 3.2 Qopha isikhangisi esikhuluma kabanzi ngamaphilisi okunciphisa umzimba: Sibhale-ke. **[15]**

IMIKLOMELO YESIGABA B: [30]

ISIGABA C
UMBUZO 4

Phendula umbuzo owodwa vo kulesi sigaba.

Inkosi inkosi ngabantu –C.T. Msimanga

4.1 Qondanisa igama kukholomu **A** nencazelo efanele kukholomu **B**.

IKHOLOMU A	IKHOLOMU B
4.1.1 Isisho. 4.1.2 Insumo. 4.1.3 Inganekwane. 4.1.4 Isithakazelo. 4.1.5 Umzekeliso.	A. Yigama likakhokho othile. B. Inganekwane ethinta umlando. C. Yingxoxo yezilwane enesifundo esigqamile. D. Wubugagu bokukhuluma. E. Yingxoxo emfushane edingida izehlakalo ezithile ezithinta abalingiswa engxoxweni.

5x2= [10]

4.2 Phendula le mibuzo elandelayo:

- 4.2.1 Yini inganeko? (2)
- 4.2.2 Nikeza isibonelo esisodwa senganeko etholakala kule ncwadi. (1)
- 4.2.3 Ake usho ukuthi ngokwazi kwakho izinganekwane ziqaliswa kanjani, abalaleli bona benanela ngokuthini nokuthi ziphethwa kanjani. (3)
- 4.2.4 Nikeza incazelo yalesi siphicaphicwano sesimanje esilandelayo. Ngikuphicaphica ngomuntu wami othi angaphuza lonke igazi lakhe bese efa. (1)
- 4.2.5 Ngubani ovama ukuhaya umlozelo? (1)
- 4.2.6 Ezibongweni buyatholakala ubunkondlo. Bheka izibongo zika Ndlela ngezansi bese usho ukuthi nhloboni yobunkondlo etholakala emgqeni 8 no 9 kanye no 12 no 13. (2)

Izibongo Zika Ndlela	
Gwabini wemikhonto, UNonjyelwa kulala, uhlangothi lubomvu, UManxeba angamanxuluma, UNsingiz' edond' ukusuka.	5
UMagaju njengengwe, Inhlang' eyeq' iphindelela, Kwasa bemhlab' uGwabini waphika, <u>Unababuyel'</u> abangakanani, <u>Ababuyel'</u> umuntu enza ngabomu?	10
OSonyakanya, UMnyakanya oduke naMaphela, USilinda maNdwandwe <u>AmaNdwandwe</u> akhawul' amathe.	

[10]
(20)

Pheqa ikhasi

NOMA

4.3 Hluza insumo ethi “Impisi nethambo” ngaphansi kwalezi zihlokwana:

- 4.3.1 isihloko. (2)
 - 4.3.2 isimo sezinto. (2)
 - 4.3.3 uvuthondaba. (2)
 - 4.3.4 isiphetho. (2)
 - 4.3.5 isizinda. (4)
 - 4.3.6 amasu omxoxi. (6)
 - 4.3.7 isifundo. (2)
- (20)**

NOMA

UMBUZO 5

Umlabalaba – O.E.H.M. Nxumalo

5.1 Funda lezi ziqeshana ezimbili bese uphendula imibuzo kwisiqeshana ngasinye.

Isiqeshana A

“Phuma lapha!” nguNgema.
Aphume uBongani. Amehlo asecebe izinyembezi. Azibone izindonga zethemba lakhe zibhlika, zitsheke zize zidilike. Khona ubevele azi ukuthi lesi sinyathelo asithathayo sizoshayisana nenkambiso yalapha ekhaya. Kodwa manje ngoba uthando alunamngcele? Yebo, khona kuyiqiniso ukuthi ukhuliswe ngemfundiso yokuthi bona njengoba bengamakholwa nje abasadlelani nabantu abangakholwa, ayisaphathwa-ke eyokuganiselana. Naye ukhule eziqhenya kabi, engaxoxoxi nje ‘namaqaba’ lana angakubo. Inggondo yakhe isithi ukuguquguquka ngenkathi esese Yunivesithi lena enhla nezwe. Yilapha eseqala khona manje ukubona ubuhle bemvunulo nemigido yakubo. Useze abathanda impela nje abantu abazibhincelayo ngoba phela yibona abayenza igxile kuye le ndaba yokuthungatha amasiko akubo.

- 5.1.1 Shono ukuthi abanjani abantu ababizwa ngokuthi amaqaba ngokwasendabeni. (1)
 - 5.1.2 Kuyiqiniso yini ukuthi uthando alunamngcele? Sekela impendulo yakho ubhekise endabeni. (3)
 - 5.1.3 Nikeza igama nesibongo sentombi kaBongani. (2)
 - 5.1.4 Sithini isihloko sale ndaba? (1)
 - 5.1.5 Ngokuzwa kwakho indaba, sizathu sini esidale ukuba uBongani aphume enkonzweni? (2)
 - 5.1.6 Yatshalwa ngubani imbewu yenkolo lapha kwaNgema? (1)
- (10)**

Isiqeshana B

Ubuhle Nobubi

Ngikhaliswa yinto yinye uma kuthiwa umuntu muhle. Akukho lapha edlula khona kungaphawulwa okuthile ngaye. Uthi ubezwa sebesho: “Yayinhle intombi! Dadewethu, kuyazalwa kwenye indawo”. Babebodwa abathi: “Hawu bantakababa, ungathi igeza ngobisi. Kudela insizwa eyohlabana ngaleli phofukazi”. Uyahamba njalo umntanomuntu; zonke lezi zibongo ziyamdilikela nje, ubengazicelile. Ukudlula kwakhe lapha akusho ukuthi uhambe ephumputha umendo. Udlula lapha ngoba ephoqwe yisidingo, noma-ke ngoba ingekho enye indlela abengase ahambe ngayo. Akahambe egabisa ngobuhle.

- 5.1.7 Ngokuzwa kwakho indaba ubuhle bubonakala kanjani entweni enhle? (1)
- 5.1.8 Ake usho ukuthi kwenziwa yini ukuthi abanye abantu bangathandi ukutusa abanye kodwa bafune kutuswe bona. (1)
- 5.1.9 Ingabe umbhali uyakuthanda yini ukuba muhle? Sekela impendulo yakho. (3)
- 5.1.10 Ucabanga ukuthi obani laba ububi babo bushaywa indiva? (1)
- 5.1.11 Inkosi uShaka ibibenzenjani abantu ababi? (1)
- 5.1.12 Umbhali uthi ububi buhle. Uthi buhle ngani? Nikeza kube kubili. (2)
- 5.1.13 Ucabanga ukuthi ukwenzenjani ukuphumputha? (1)
- (10)**
- [20]**

NOMA

- 5.2 Hluza isakhiwo sendaba emfushane ethi “Isikhala sokufundela ubuthishela” ngaphansi kwalezi zihlokwana.
- 5.2.1 Isethulo. (5)
- 5.2.2 Ilukuluku. (5)
- 5.2.3 Ukuphithana novuthondaba. (6)
- 5.2.4 Isiphetho. (4)
- [20]**

IMIKLOMELO YESIGABA C: [20]

IMIKLOMELO ISIYONKE: 80

ISIPHETHO