

UMNYANGO WEMFUNDO WASEGAUTENG
UKUHLOLWA KWEBANGA LESHUMI NAMBILI

FEB / MAR 2006

ISIZULU ULIMI LWEBELE
IZINGA ELIPHEZULU
(Iphepha Lesithathu)

ISIKHATHI: 2½ Amahora

IMIKLOMLO: 120

ISIGABA A

UMBUZO 1
IZINDABA

Khetha isihloko **esisodwa** ubhale **indaba** igcwale **amakhasi amabili**.

- 1.1 Ukube ngangazi...
- 1.2 Buka lo mfanekiso ongezansi bese ubhala **indaba** emaqondana nokuvezwa kwamathuba emisebenzi.



YIBO laba besifazane bezibambele mathupha bexova usimende besembhidlangweni w okwakha izindlu.

- 1.3 Buka lo mfanekiso ongezansi bese ubhala **indaba** ngemizwa equbuka kuwena lapho uwubuka.



- 1.4 Ipolitiki. [40]
- 1.5 Ukubona kanye ukubona kabili.

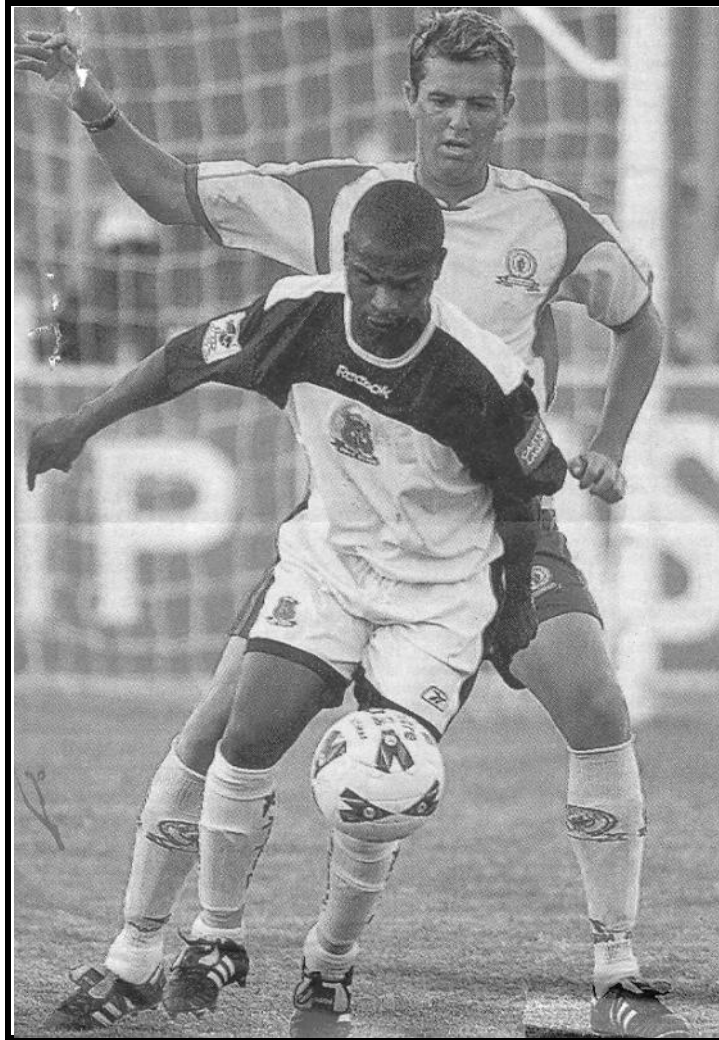
IMIKLOMELO YESIGABA A: [40]

ISIGABA B

UMBUZO 2
IZINCWADI

Khetha isihloko **esisodwa ubhale incwadi ugcwalise** ikhasi elilodwa **vo**.

- 2.1 Usungomunye wabadlali bebhola likanobhutshuzwayo. Ukhona kulesi sithombe esingezansi. Bhalela **umngani** wakho **incwadi** umazise ukuthi nenzani nokuthi waqala kanjani.



- 2.2 Uthanda ukugembula. Ube nenhlanhla yokubamba lo mdlalo okulo mfanekiso ongezansi. Bhalela uSomabhizinisi wangakini incwadi ucele ukusebenzisana naye ebhizinisini, uyozimela uma sewejwayele ngokuqhutshwa kwebhizinisi.

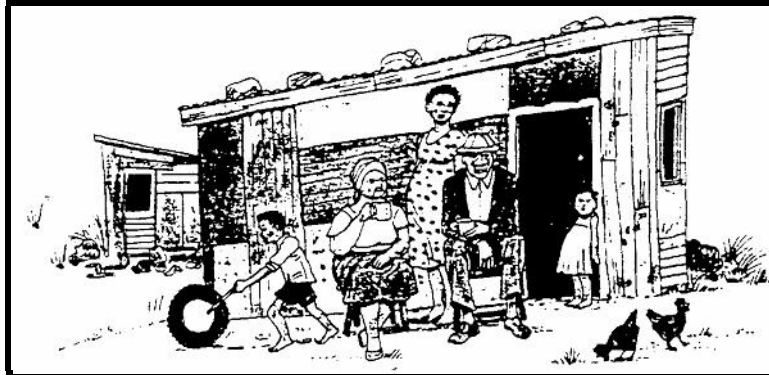
[20]



UMBUZO 3
IZINDATSHANA EZEDLULISA UMLAYEZO

Khetha isihloko **esisodwa** ubhale ngaso kugcwale **ikhasi elilodwa** vo.

- 3.1 Bhalela abezehlalakahle **imemorandamu** ukhononde ngalesi simo esikulo mfanekiso ongezansi wokugcwala kwemijondolo.



[20]

- 3.2 Nasi isithombe esikhombisa imvelo. Sebenzisa sona ukubhala **amaminithi omhlangano** ebeninawo endaweni yangakini, lapho kade niqwashiswa khona ngokubaluleka kokunakekelwa kwemvelo.



[20]

UMBUZO 4

Khetha isihloko esisodwa kulezi ezilandelayo:

- 4.1 Bhala **uhlelo lwakho** lokuzazisa (CV) luphelele **ekhasini elilodwa**.
- 4.2 Yenza uhlaka **lwesikhahlamezi** (fax) wazise unyoko ngecala osulenzile lokubanjwa esikoleni unezidakamizwa. Kumele afike ngokushesha kuzoqulwa lelo cala.

[10]

IMIKLOMELO YESIGABA B:

[50]

ISIGABA C

Phendula umbuzo owodwa kulesi sigaba.

UMBUZO 5 UBUCIKO BOMLOMO

Inkosi Yinkosi Ngabantu: C.T. Msimang

- 5.1 Funda lezi zingane kwane ezilandelayo bese uphendula imibuzo ngezansi:

Isiqeshana A

Uheshane Nezinkukhu

Umxoxi : *Kwesukela!*
Abalaleli : *Cosu!*
Umxoxi : *Kwakukhona uheshane kanye nesikhukhukazi. Uheshane lona wayezwana kakhulu nesikhukhukazi. Bagcina sebethathene, uheshane eseyindoda yesikhukhukazi, nesikhukhukazi sesiyinkosikazi kaheshane. Ngelinye ilanga uheshane wahamba eyofuna ukudla. Washiya izembe lakhe. Wacela ukuba isikhukhukazi simbhekele kahle izembe lakhe aze abuye. Savuma isikhukhukazi futhi sethembisa ukuthi sizoyibheka kahle imbazo.*

- 5.1.1 Nhloboni yengane kwane lena? Usho ngani? (3)
- 5.1.2 Chaza kafushane ukuthi yini lena eyaletha ingxabano phakathi kukaheshane nesikhukhukazi. (5)
- 5.1.3 Ngabe uheshane wasijezisa kanjani isikhukhukazi? (2)
- 5.1.4 Izinkukhu zihlala ziqhwisha njalo ezaleni. Ngabe yini okubanga lokho? (2)
- 5.1.5 Yini uheshane? (2)
- 5.1.6 Yikuphi ezaleni? (1)

[15]

Isiqeshana B

“Nansi-ke inyama ebengiyifuna. Nebala sengiyolala ngidlile.” Yasho iziduduza, ilahla ithambo emanzini, igxavula inyanga. Nanso phela inkanankana. Impisi igxavule ubala, ibuye ilambatha. Ithi iyabhekisisa ukuthi ngabe isidikadika esingakaya senyama sesishonephi, kutholale ukuthi amanzi asedungekile, ingabe isabona kahle. Pho lokhu seyiconsamathe ingabe isahamba yini! Ihlale aze acwebe amanzi.

- 5.1.7 Nikeza isihloko sale nganekwane. (2)
- 5.1.8 Shono ishwa elavelela impisi ngalelo langa. (2)
- 5.1.9 Chaza kafushane ukuthi yaziduduza kanjani impisi emva kokuvelelwa yileli lishwa. (2)
- 5.1.10 Ingabe yabonani emanzini impisi? Yacabanga ukuthi yini leyo? (2)
- 5.1.11 Abanjani amanzi uma esedungekile? (2)
- 5.1.12 Kuchazani “ukubuya ulambatha?” (2)
- 5.1.13 Ngokuzwa kwakho le nganekwane, ingabe isethulela sphi isifundo? (2)
- 5.1.14 Shono lo mdlalo owawulokhu udlalwa yimpisi. (1)

[15]

NOMA

[30]

5.2 Hluza le nganekwane ethi INKOSIKAZI ESENYANGENI ngaphansi kwalezi zihlokwana.

- 5.2.1 Isakhiwo (10)
- 5.2.2 Abalingiswa (8)
- 5.2.3 Isifundo (12)

[30]

NOMA

UMBUZO 6
IZINDABA EZIMFUSHANE NAMA ESEYI

Umlabalaba – O.E.H.M. Nxumalo

6.1 Funda lezi ziqeshana ezimbili bese uphendua imibuzo ezolandela:

Isiqeshana A

Athi ukunqikaza uBongani aze agcine esecela uxolo, aphume acishe azingqubuze lapha emnyango. Akasaboni nakahle. Amehlo asemnyama. Kubuye kuthi dwe. Ahambe kancane aze ayongena elawini lakhe. Uyazi ukuthi bazombiza khona maduze nje. Uyise—ke yena uzombuza khona lokhu okwejwayelekile, ikakhulu ukuthi ibhuku limi njani ebhange. Munye kuphela umbuzo ozoba nzima, munye zwi. Zehle futhi izithukuthuku azesule. Idume ingqondo. A, nakhu esebizwa. Aphume, aqonde khona endlini yabazali.

- 6.1.1 Ngobani abazali bakaBongani? (2)
- 6.1.2 Yini eyenza uBongani acishe azingqubuze emnyango? (2)
- 6.1.3 Kuchazani lokhu: **ibhuku limi kanjani ebhange?** (2)
- 6.1.4 Yimuphi lo mbuzo ozoba nzima? Kungani uzoba nzima lo mbuzo? (3)
- 6.1.5 Nikeza isihloko sale ndaba. (1)
- 6.1.6 Shono indawo lapho kuhlala khona uBongani. (1)
- 6.1.7 Nikeza igama nesibongo sentombazana ezoshada noBongani. (2)
- 6.1.8 Yini eyenza uBongani angasayi esontweni? (2)
- [15]**

Isiqeshana B

Into enhle ivela obala ubuhle bayo ngoba iqhathaniswe nenye. Ehhe, uzibeke phambi kwakho izinto ezinhle; izinto zokubukwa nje. Usungamema ilima lalabo abazopha iso, futhi bengathengi mehlo, behlulela ukuthi ngubani omuhle. Iphutha leli ukusukela umntanomuntu ezihambela yedwa vo emgwaqeni bese uthi muhle, wedlula bonke, abantu, kusho ukuba nguhubhu kabhenjane wokuqala nowokugcina. Uma kungenjalo, nsizwandini uyidliwa lokugcina. Ulimi lolu lunomnqathula, awazi ukuthi indima uzoyala kanjani. Ingakho-ke nje ugxumela egameni elithi “umuhle”. Ngokusho kanjena, insizwa lena isuke icabanga ukuthi izozwelwa, isheshe ithole umusa.

ISIZULU ULIMI LWEBELE IZINGA ELIPHEZULU (Iphepha Lesithathu)	123-1/3 L	10
---	------------------	-----------

- 6.1.9 Ngokusho komlobi, kubi ukuba muhle komuntu wesifazane. Shono isizathu salokho. (2)
- 6.1.10 Ngokusho komlobi, laba bantu abangaphawuli lutho ngabanye bathulile. Shono izinto ezintathu ezenza ukuba bathule. (3)
- 6.1.11 Uma umuntu wesilisa emubi kuyaye kuthulwe kubekezelwe. Ingabe kusuke kugatshwe ngani? Shono okubili. (2)
- 6.1.12 Ngubani lona owayebulala abantu ngoba ethi babi? Yikuphi okuhle ababekwenza? (2)
- 6.1.13 Kuchazani ukuba nguhubhu kabhejane? (2)
- 6.1.14 Yini ilima? (1)
- 6.1.15 Uma insizwa ithi entombini yinhle, isuke ikwenzelani lokho? (2)
- 6.1.16 Ngenjani insizwa eyidliwa? (1)
- [15]**
- 6.2 Hluza le ndaba ethi “IMPIMPI” ngaphansi kwalezi zihlokwana:-
- 6.2.1 Isigameko esisodwa. (10)
- 6.2.2 Ukuqoqana. (5)
- 6.2.3 Isikhathi nendawo. (5)
- 6.2.4 Abalingiswa. (5)
- 6.2.5 Isiphepho. (5)
- [30]**

IMIKLOMELO YESIGABA C: [30]

IMIKLOMELO ISIYONKE: 120