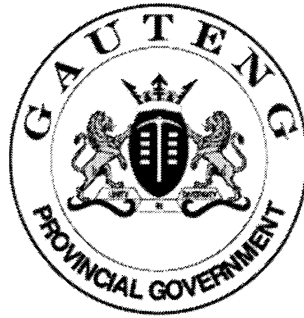


SENIOR CERTIFICATE EXAMINATION
SENIORSERTIFIKAAT-EKSAMEN



OCTOBER / NOVEMBER
OKTOBER / NOVEMBER

2004

ISIXHOSA ULWIMI LWESIBINI
UHLELO OLUPHAKAMILEYO

(Iphepha Lesibini)



927-1/2

17 pages

IsiXHOSA SECOND LANGUAGE HG: Paper 2



927 1 2

HG

COPYRIGHT RESERVED / KOPIEREG VOORBEHOU
APPROVED BY UMALUSI / GOEDGEKEUR DEUR UMALUSI



ISEBE LEMFUNDO LASEGAUTENG

UVAVANYO LWEBANGA LESHUMI ELINESIBINI

**ISIXHOSA ULWIMI LWESIBINI
UHLELO OLUPHAKAMILEYO
(Iphepha Lesibini)**

IXESHA: 2 iiyure

AMANQAKU: 80

IMIYALELO:

Eli phepha linamacandelo amahlanu u- A, B, C, D no-E.
Makuphendulwe imibuzo EMIBINI ngencwadi EZIMBINI kuphela.
Umviwa makasebenzise iinombolo ezisetyenzisiweyo.

**ICANDELO A
UMBUZO 1**

Isihobe: Khala zome: Ngcwabe LSM.

1.1 Funda esi sicutshulwa silandelayo uze uphendule imibuzo.

UMNQWENO WEXHEGO

Ubusana exhegweni
Abuzange bucunyuzwe:
Busahle' emithanjeni;
Sebukhumbula ibele,
Buyakhala.

Vuka, vuka, vuka mntwana!
Emzimbeni ndiyakuva,
Egazin' usekho wena,
Uyanxanwa umphefumlo
Ngaphakathi.

Singa, singa, singa mntwana!
Ezo ntaba ngamagqala,
Loo mathafa ngabantwana,
Ezi ngalo zezomzali,
Singatheka.

Ncanca, ncanca, ncanca mntwana!
Ubudala bubhubhile,
Ndibuyile ndalusana;
Ebeleni likamama
Ndithe nca.

- 1.1.1 Yintoni le inqwenelwa leli xhego? (1)
- 1.1.2 Umbhali wakhe umfanekiso ngqondweni ngokusebenzisa; izikhombisi. Bhala ezi zikhombisi. (3)
- 1.1.3 Athetha ukuthini la mabinzana?
 (a) Abuzange bucunyuzwe.
 (b) Uyanxanwa umphefumlo.
 (c) Ubudala bubhubhile. (3)

1.2 Phendula imibuzo ngesi sicutshulwa silandelayo.

Uthe akukhov' ukumamela,
Wathi gqaba-gqab' ukuphendula:

"Nkosi, inqanawe iyazika.
Siyeyel' isizwe eAfrika.
"Ndikhulule, Bawo, ndiye kunceda
Alwa edabini amadoda.

"Ndikhulule ndiye eAfrika,
Kuso isihogo eAfrika."

Watsho iinyembezi' ezithulula.
Yaphendul' iMvana yamndulula:

"Hamba, qikilana lomzi kaNtu
Ube yintsika yaloo ndlu kaNtu.

"Z'uqaqambe njengekhwezi lomso, –
Liqhekez' iindaba zosindiso."

Uthe akubuyel' emhlabeni,
Yath' imbong' ingqisha enkundleni:

Bhota! Bhota! Bhota! Gorhandini!
Iqhayiya lifel' edingeni!"

- 1.2.1 Nika isihloko somhobe. (1)
- 1.2.2 Bhala into eyacelwa nguNxu kwinkosi yakhe. (2)
- 1.2.3 Wayekwesiphi isimo ngexesha awayethetha nenkosi yakhe? (1)
- 1.2.4 Bhala amagama amabini asetyenziswe ngumbhali nagxininisa ubaluleko lobuzwe. (2)

1.2.5 Thelekisa u-A no-B.

- | | |
|----------------|-------------------|
| 1. gqaba-gqaba | (a) akugqiba |
| 2. iyazika | (b) ndivumele |
| 3. akukhova | (c) ngokufutshane |
| 4. ndikhulule | (d) ixhentsa |
| 5. ingqisha | (e) iyatshona. |
- (5)

1.3 Phendula kwakhona le mibuzo ngesicatshulwa esilandelayo.

Yibongeni ke kaloku bethu le nkosana,
Niy'bulel' imisebenzi yay' engakanana;
Ningasilibali isikhukukaz' unina
Ngokunizalela eli xhwangusha.
Ngumfo wondlekile, yindodana,
Yinkosana le ezintakeni.
Yibongeni bethu le nkosana!

1.3.1 Sithini isihloko salo mhobe? (1)

1.3.2 Bhala amagama abonisa ukuba umntwisiwe lo mqhagi. (2)

1.3.3 Bhala izikweko zibe-2. (2)

1.3.4 Kukuthini ukondleka? (1)

1.4 Funda isicatshulwa esilandelayo uze uphendule imibuzo.

Ndineqhosha ligugile,
Aliseva nangendlebe,
Kwanamehlo abolile,
Kodw' umlomo usaphila.

Ungafika lincumile,
Selingasatweli ngako,
Likhenkceza ligcobile,
Lizibuka-buka ebhatyini.

Ndalambulelwa ngubawo,
Kodwa akungeze utsho:
Liyafana tu nawo
Onke amaqhosha am.

Ndakha ndathi ngeny' imini,
Ndihombile ngezodidi
(Ndandisiya emtshatweni)
Ndeva selidanduluka:

1.4.1 Sithini isihloko sala mhobe? (1)

1.4.2 Zintoni ezibonisa ukuba lidala eli qhosha nezikumhlathi-1
Bhala zibe-mbini? (2)

- 1.4.3 Bhala izenzo ezi-2 ezibonisa ukuba limntwisiwe eli qhosha. (2)
- 1.4.4 Lo mfo walithatha phi eli qhosha? (1)
- 1.4.5 Bhala igama elikumhlathi-2 nelithetha ukuphiwa. (1)
- 1.4.6 Sithetha ukuthini isivakalisi esikrwelwe umgca? (1)

1.5 Phendula esi isicatshulwa.

Sandule ke sabelw' imivuzo:
Mna ndathweswa isitsab' entloko –
Elo khephu laloo ntab' obomi,
Aph' amav' enyang' agcinwa khona:
ULIZWI waphiw' umvuz' omkhulu –

Ndaphiwa nentong' omsimelelo,
Kwathiwa ze ndinkqonkqoze ngayo
Kuloo ndlu kaSinqesibuhlungu,
Kwesokugqibel' isikhululo.
USITHUNZI ndambon' ekekela
Ecaleni – exel' unonkala

Ndase ndikhathulil' ebudaleni,
Sendingqongwe ngabazukulwana,
BengoNgqi-ngedolo, Xhaa-ngentshebe,
Ndincumile kuludid' endlwini,
Ndinguvimba wamava neembali,
Ndithulule nditsh' umnt' angalali.

- 1.5.1 Sithini isihloko? (1)
- 1.5.2 Yintoni le yazuzwa leli xhego? (1)
- 1.5.3 Bhala iindlela ezintathu elithe labonakalisa ngazo ukuguga kwalo. (3)
- 1.5.4 Ngokucaphula kumhlathi wokugqibela xhasa into engqina ukuguga kwakhe. (2)
- 1.5.5 Ufunde ntoni kulo mhobe? (1)

AMANQAKU ECANDELO A: [40]

ICANDELO B
UMBUZO 2

Umdlalo: Isisila sehobe: Satyo SC no-Gwashu FF.

2.1 Funda esi sicutshulwa, wandule ukuphendula imibuzo.

UNqabeni	<i>(Ezolile):</i> Ndingumcuphi waseThekwini mna. Ndiyibambile le ndoda ndihamba nayo, ngokuqweqwedisa nokukhuthuza uDineka waseMgungundlovu ngokuntlokothiswa nguwe, Nomatshamba nale ndoda yakho!
ULindile	<i>(Ekhwaza):</i> Hay'! Hay' bo! Hay' bo! Manene Manene! Ningakhe nilinge nindifake kule nto! Andazani nayo yonke le nto! <i>(Alathe kuNomatshamba.)</i> Nank' umnt' ophambili kule nto! Nguye umntu osebenza yonke le nto! Mna andazi nokuba kuphi! Andazi nkqu nale mbuqu yenzekayo kule ndlu. Nale nto nithetha ngayo, andazi nokuba kuphi!

- 2.1.1 Uwathetha la mazwi ephi uLindile? (1)
- 2.1.2 Unabani apho? (1)
- 2.1.3 Uwabhekisa koobani la mazwi? (2)
- 2.1.4 Yintoni le athi akayazi uLindile? (1)
- 2.1.5 ULindile lo ophika yonke into ufuna ntoni kule ndlu? (1)
- 2.1.6 Kha ubhale igama elibonisa ukwala nokuzithoba kukaLindile kula madoda. (1)

2.2 Phendula imibuzo ngesi esilandelayo isicutshulwa.

UQalisile:	<i>(Ekhwaza ebaleka):</i> MLungu! MLungu! Nceda torho, mLungu, khawumise! Misa torho, mLungu! Polisa! Khawutsho kulaa mLung' uqhubay' amise torho! Misa! Dini! Yitsho bamise! Yitsho bamise, s'thandwa!
UDineka:	<i>(Ekhwaza esimka nololiwe):</i> Baleka, Qali! Baleka, Qali! Owu! Nkosi yam! Nkosi yam! Nkosi yam! Yo-o-o-! <i>(Aye kutshona kwasegumbini labo ekhala kakhulu.)</i>
Ipolisa	<i>(Lisukela uQalisile):</i> Hey! Hey! Buy' umv' etreyinin' apha! Unani? Uyaphambana? Ufun' ukuya kulal' etrongweni?
UQalisile	<i>(Esima, ekhefuzela):</i> Uxolo, mhlekazi! Uxolo! Ndishiywa yile treyini bendisaye kuthenga iphepha. Ndiya eSalisbury nomfazi! A wu! Madoda! Lilishwa lantoni eli? Yinto endiza kuyithini ke ngoku le, madoda? Awu!

Ipolisa (*Liba nosizi ngoku*): Itikiti lenu likuwe, okanye, kumfazi?
UQalisile: Likumfazi, mhlekazi.
Ipolisa: Jonga! Ndiza kufonela eBulawayo ndibaxelel' ukuthi bamhlise umfazi khona. Wena ungabamba le ivela eKapa itreyini; iza kulandela le ikushiyileyo. Uya kumfumana umfazi wakho ekulinde eBulawayo ngokuhlwa kwangomso. Uthini ke? Unayo imali?
UQalisile: Ewe, mhlekazi, imali ndinayo. Mhlekezi, torho sukuba sazikhathaza ngokufonela eBulawayo, kuba, loo nto ingenza ukuba silahlekane mhlawumbi. Sendiya kumfumana eSalisbury, kwidilesi esiya kuyo. Ndiza kuyilindela yona itreyini le izayo. Ndibulela ukuzikhathaza kwakho.

- 2.2.1 Yayiyintoni imbangi yoku kukhwaza kuka Qalisile? (1)
- 2.2.2 Wayeyephi ukuze ashiywe nguloliwe? (1)
- 2.2.3 Babesiya phi noDineka besiya kwenza ntoni apho? (2)
- 2.2.4 Itikiti lakhe uQalisile laliphi ngeli xesha? (1)
- 2.2.5 Wayeza kumlandela njani ke uDineka? (1)
- 2.2.6 Ipolisa lona lanika ngcebiso ni? (1)
- 2.2.7 Yena uQalisile wathatha eziphi izigqibo? (1)
- 2.2.8 (a) Kusetyenziswe uphinda-phindo apha. Bhala olo phinda-phindo lube lunye. (1)
(b) Lubonisa ntoni olo phinda-phindo? (1)
- 2.2.9 (a) Bhala izikhuzo ezisetyenziswe apha zibe-2. (2)
(b) Zibonisa ntoni ezi zikhuzo? (1)

2.3 Funda kwakhona esi esilandelayo isicatshulwa.

UMahlwantsana: Ewe, ndifika nalo ngoku.

UNomatshamba: Phulaphula kakuhle ke, Hlwantsi. Ndiyindlela eza apho eSalisbury, Ndiza nesihlobo sam. Jonga ke: Phaya eHarari, kukho indlu ekuthiwa kuseBhangalow-Ten, eDaniel Stalato. Uyayiqonda loo ndlu?

UMahlwantsana: Ndiyazi kakuhle. Ibalwe njalo kaloku.

UNomatshamba: Heke! Yindlu yam ke leyo. Apho kuyo kuhlala umfana onguZoro, kunye nentokazi egama lingu-Izabhel. Bandazi kakhulu, nendlu leyo yam bayiqeshiselwe ndim; behlawula irente yabo kum ndilaph' eBhayi mna. Ndikuxelela ezi zinto ukuze uqonde ukuba, nabo bangabantu bam, njengawe. Ngak' oko ke, baya kwenza loo nto ubaxelela yona ukuba uthwaxelele ukuba yimiyalelo evela kum. Nantsi ke eyona nto: Yiya kuZoro, mxelele ngeso sidengazana silapho kuwe. Hambani naso ngobu busuku niye kusilahla ekulibaleni! Siyavana?

UNomatshamba: Phaya eMarirangwe, kwintshonalanga yeSalisbury, kukho apho umqolomba onqabe kunene. Lo mqolomba kuthiwa ukubizwa kwawo yiRusvingo. Phaya ngaphakathi kwawo ulilizwe ukuvuleka nobubanzi; ilizwe eliphantsi komhlaba. Wabe uyingqaba yamaZezuru ngexesha leemfazwe mandulo. Namhlanje, ukuba umntu ungene apho akabuye akwazi ukuphuma. Siyavana?

- 2.3.1 Wayaleza ntoni uNomatshamba kuMahlwantsane? (1)
- 2.3.2 Wayehamba nabani ngelo xesha? (1)
- 2.3.3 Bhala igama lendlu yakhe eHarari nesitrata ekuso. (2)
- 2.3.4 Ngubani lo mfana ohlala kule ndlu? (1)
- 2.3.5 Uhleli nabani kule ndlu? (1)
- 2.3.6 UZoro noMahlwantsane banikwa myalelo mni? (1)
- 2.3.7 Wayeza kulahlwa phi ke uDineka? (1)

2.4 Phendula isicatshulwa esilandelayo.

UDineka (*Ebona uQalisile kuqala!*: Mgulukudundini womguvela! UThixo lo usebenza apho kungabonwayo! Ubucing' ukuthi ndifile, nkewundini! Yini ukude uye kundibulalela kude kangaka, tshijolondini? Bandichole ke bona abantu bakaNkulunkulu. Nank' umntu wabantu eze kundibeka apha phambi kwakho, Qalisile! Wawucing' ukuba undingqibile, qhokolondini, ngomtshato wakho ongcolileyo, ufuna kuphela imali yam! Akusoku. . . .

- 2.4.1 Ngubani lo mgewu ekuthethwa naye apha? (1)
- 2.4.2 Kutheni ebonwa njengomgewu nje? (1)
- 2.4.3 Bhala amagama asetyenziswe ngumbhali nabonisa ubugebenga balo mntu abe-2. (2)
- 2.4.4 Kutheni esithi uDineka lo mtshato wabo ungcolile? (2)
- 2.4.5 UNomatshamba noLindile banikwe amagama ngokwezimo zabo ebalini.
Chaza:
(a) Isimo sikaNomatshamba. (2)
(b) ULindile. (2)

2.5 Sibe yintoni isiphelo sikaDineka? (1)

2.6 Uphelele phi yena ULindile? (1)

AMANQAKU ECANDELO B: [40]

ICANDELO C
UMBUZO 3

Inoveli: UMakhwekhwetha: Mcimeli RF.

3.1 Funda esi sicutshulwa uze uphendule imibuzo.

“Nx! Demn! Andigezelwa lolu zwambezwana lomfana nithi nguBoss? NguBoss kubani? Wazini efika nje apha ebucuphini, ngaphandle kokudlisela ngemfundo? Kuba esuke wanikwa iwonga lokuba ngumphathi? Nx-dem!” Akutsho ndafuna amazwi awaye eya kuthi amthoboze ukuze sikwazi ukude sincokole. Ndiqale ngokulaqaza, de ndaqonda ukuba akukho mntu uya kusivela, ndathetha. Ndandiqonda ukuba xa enjalo kwakufuneka loo mazwi ndiwathethayo ibe ngalawo ababaza ubukhulu bakhe nento yokuba ubahlalisa phantsi bonke kweso sikhululo ngayo yonke into, “Awu, Makhwekhwetha, ungade uzihluphe ngaba bantu? Akuboni ukuba bayakumonela, bayaqonda ukuba kuyo yonke into ubashiya ngokwehashe libaleka needonki? Khona, ungazihlupha ngobutyhifili boluntu lwale mihla olusuka kuyo yonke into lukhokelise le mfundondini? Ibiqale yayintoni imfundo eninzi xa ithelekiswa namava aphelekwa yingqondo yemveli? Musa ukudlala, xhego lam. Phanda iqhina eli lakho wena iziyeke ingqeqe zibe zikungqavula emacaleni apha zitsho ngengxolo enkulu engasoze isise ndawo.”

- 3.1.1 Yintoni le imcaphukisa kangaka uMakhwekhwetha? (1)
- 3.1.2 Yintoni umahluko phakathi kukaMakhwekhwetha noBoss? (1)
- 3.1.3. Wawuthoboza njani lo msindo uSiphuka? (2)
- 3.1.4 Kukuthini:
- (a) ukulaqaza? (1)
 - (b) ngobutyhifili? (1)
 - (c) iingqeqe? (1)

3.2 Phendula esi esilandelayo isicutshulwa.

“Ukuba kunjalo ndiza kuya ngokwam kuBoss, ndicele ukuba asivumele sobabini siliphande eli qhina.” Nditsho ndaphakama, ndaphuma ndaya kungena eofisini kaBoss ndiziva ndinesazela ngokunyoka abanye kuMakhwekhwetha. UBoss uwenze ambalwa kum, “Kulungile, mfo kaSiphika, hambani noMakhwekhwetha. Kodwa ndinisikela iteki ezimbini. Ukuba zikhe zaphela nisangqisha ndawonye ndiyayivala yonke loo nto kuba ndinifuna kwamanye amaqhina. Ndiyeka nje kuba sezizininzi izihlandlo ezi SP zikaMakhwekhwetha zisiza neziphumo ezincumisayo, nangona zikwazininzi nje izihlandlo zibuya nembande yesikhova; ukusuka apho zinganeli kusilibazisa nje koko zisenze intlekisa.

- 3.2.1 Wamxolisa kanjani uSiphuka uMakhwekhwetha? (1)
- 3.2.2 Silumkiso sini esanikwa uSiphuka malunga nokuphanda ityala elo? (1)
- 3.2.3 Yintoni eyenza ukuba uBoss avume baqhubeke neli tyala? (1)
- 3.2.4 Yintoni yona le S P.? (1)

3.2.5 Sihlava sini osibonayo wena kubantu abasebenza kwesi sikhululo? (2)

3.3 Phendula imibuzo ngesicatshulwa esilandelayo.

“Amashumi asixhenxe uwadibanisile, ngoko ebesaphilile ubungeze utsho kuba ebomelele laa mfo. UNowandile yena lusana. Ungemva nalapha kum kangangokuba mithathu kuphela iminyaka ephumile esikolweni, nakhona ekhutshwa kukwendela kweli xhego. Ngelo xesha unokuba ebesenamashumi amabini kuphela eminyaka.

“Oo. Kulungile mfana. Siza kuxelela uMphathi wethu ukufika kwakhe. Nguye oza kuthumela abecuphi bayokuphanda.” Ubulele umfana wahamba.

“Usibambela ntoni, Makhwekhwetha, xa sisiya kunceda umntu eza kuzenzakalisa?” Ndibuze ngomdla akuba ephumile umfana.

“Enye yezinto endayifundayo apha ebucuphini, manene, kukuba musa ukuthi kwakungena umntu ephakuzela uphakuzele nawe. Zola utshi cwaka khona ukuze ingqondo yakho ikwazi ukuhluzisa. Hleze ngokuphakuzela nawe, uzibhude izingqi. Kodwa ndicela uxolo madoda. Andikhange ndicinge ukuba lo mfazi uza nemeko enje”, litshilo igqala ngokuzithoba.

3.3.1 Mingaphi iminyaka kaNowandile? (1)

3.3.2 Lona eli xhego lineminyaka emingaphi? (1)

3.3.3 Yintoni umahluko phakathi kwaba babini? (2)

3.3.4 Yintoni le yafundwa nguMakhwekhwetha ebucuphini? (2)

3.3.5 Kukuthini:

(a) ukubhuda izingqi? (1)

(b) ukuphosa kwelibetha umoya iliwa? (1)

3.4 Phendula kwakhona imibuzo ngesi isicatshulwa.

Igumbi eli yayilelokulala. Singena nje sitsalwe ngumbono wolo sizana losana. Ukuba lwalunayo imilenze ngendiba ndithi lwaluthe tywa kuloo bhedana yalo yomthi yayakhiwe kanye oku kwesibaya samatakane. Koko ke lwalungenayo. Loo ngalo yayikuphela kwayo ekhoyo yayanekiwe lulele ngomqolo lwacimela mba, kanye oku komntu onyamezele iintlungu, lukhamisile. Loo mtya wegawuni ebomvu wawutshone wazika emqaleni apha wabotshelelwa macala kule bhedana ukuze lungasindi nokuba sele kutheni na. Qelele kwelinye lcala yayiyibhedi enkulu eyayibonakala ukuba yeyexabiso. Yayize kodwa kubonakala ukuba bekulelwe kuyo.

Yayiqhwaqhwazelisa amashiti, thso ngezilafu-lafu zona iingubo ezi nemiqamelo. Ngaphaya kwayo kwakukho enye encinane kunayo. Yona yayitsho ngemidakasholwana yeengubo eziqulethe inqunjana eyaye ithe gqi ngobuswana obunga yinkonkxa endala ukuboqoka oku, bunganelanga nje kukuba mnyama thsu koko buluthuthu. Le nqunjana ukuphefumla oku ikhalisa amakhwelo yaye iyakhawulezisa liphika. Lalisele libophile elokufa ivumba kuloo ndlu. Sisondele sabulisa kule nqunjana, savuya kakhulu sakufumanisa ukuba oku kokuthetha kona isakwazi. Ithe masichophe kule bhedi inkulu, sachopha sajonga kuyo.

Ubuze impilo uMakhwekhwetha, waxelelwa oko besikuvile: ixhego eli ligula kangangokuba liyaqonda nalo ukuba...

- 3.4.1 Bangena kweliphi igumbi ooMakhwekhwetha? (1)
- 3.4.2 Yintoni le yayibatsalele kweli gumbi? (1)
- 3.4.3 Lwaluphi olo sana? (1)
- 3.4.4 Lwabalawa njani olu sana? (2)
- 3.4.5 Kha uchaze ubume bomondlalo webhedi enkulu eyayikweli gumbi. (2)
- 3.4.6 Yintoni umahluko phakathi kwawo nobume bomandlalo webhedi encinane eyayikwakweli gumbi? (2)
- 3.4.7 Lo mntu wayelele kule bhedi incinane wayekwesiphi isimo? (1)
- 3.4.8 Kutheni lo mntu ebonwa njengenqunjana nje? (1)

3.5 Phendula imibuzo ngesi sicutshulwa

Lona livuswe sisikhalo sikaVuyiswa, lo mfazana uqeshelwe ukugcina usana olu. Phofu unina lo wosana akasebenzi, kodwa ngezizathu ezithile wagqiba ekubeni afune umntu wokugcina olu sana, aluphekele, alutyise, aluhlambele alwenzele yonke into. Lakutshona ilanga kufuneka uVuyiswa alulalise kuloo bhedana yalo. Angakhululeka emva koko, kodwa ancede avuke ngengomso kuba kufuneka luthi luvuka abe elapha. Olu sana alulifunanga ibele lusavela nje, utsho unina. Kuthe ngoku sele lisiva isikhalo ixhego kwanzima kulo kuba kakade lithi ukuze liguquke lincediswe. Ngelingeni, ngoku sekuzele nangabantu, lincediswe nguVuyiswa laguquka, kwakukhona liyivayo yonke eyehlileyo kusithiwa uthe akuyibona umfazi waphambana waphuma ebaleka, kangangokuba abafana bommelwane basukelisile.

Ndothuswe yindlela elisuke eli xhego labonakalisa ukungachukumiseki ngayo. Phakathi kwithoni yelizwi lalo ndive bunkente-nkente u-'andiyikhathalele yonke le nto ihlileyo.' Lalithetha kanye njengomsasazi efunda iindaba: yena ungeze wazi nokuba ukweliphi na icala. Ndimangaliswe yiloo nto, ndadubuleka ngombuzo, "Awu, tata? Khona sele ulala kangakanani na uthetha ukuba kungabulawa umntu ade afe fi ukho endlwini, uze ungabi seva nesikhalwana esi, nentshukumana le?"

"Umntu okrwitshwayo kaloku mfo akakwazi kukhala, ingakumbi xa efuthanyiselwa nokufuthanyiselwa. Okwesibini incinci gqitha intshukumo anokuyenza umntu onje, ongenamilenze waza wanengalo enye. Kaloku ezo zezona..."

- 3.5.1 Ngubani lo wayekhala? (1)
- 3.5.2 Yintoni umsebenzi kaVuyiswa kweli khaya? (1)
- 3.5.3 Wayetshayisa nini uVuyiswa? (1)
- 3.5.4 Ngubani lo owavuswa sesi sikhalo sikaVuyiswa? (1)
- 3.5.5 Kukuthini:
- (a) ukungachukumiseki ngokweli bali? (1)
- (b) ukudubuleka? (1)
- (c) ukusukelisa? (1)

3.5.6. Umbona njengomfazi onjani uNowandile?

(1)

AMANQAKU ECANDELO C: [40]

ICANDELO D
UMBUZO 4

Uncwadi lwemveli; Sasinoncwadi kwatanci: Satyo SC nabanye

4.1 4.1.1 Bhala iindidi zoncwadi. (2)

4.1.2 Bhala uphawu olunye loncwadi lwemveli. (1)

4.1.3 Luphumpeka njani uncwadi lwemveli xa lubhaliwe. Bhala izinto zibe-2. (2)

4.2 IZACI

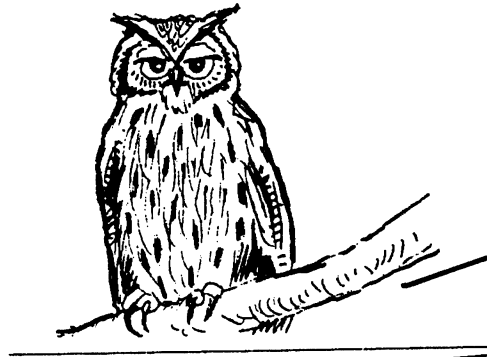
Yakha izaci ngale mifanekiso

4.2.1



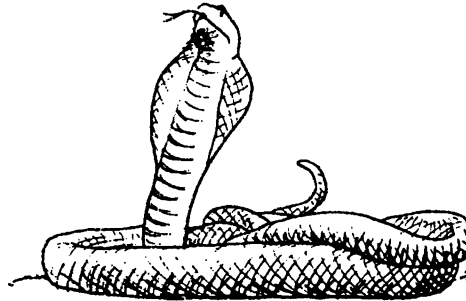
(1)

4.2.2



(1)

4.2.3



(1)

4.3 AMAQHALO

4.3.1 Yintoni iqhalo?

(1)

4.3.2 Yintoni umsebenzi weqhalo?

(1)

4.3.3 Gqibezela la maqhalo:

(a) Ingwe idla

(1)

(b) Inxeba lendoda a

(1)

(c) Isala kutyelwa sibona

(1)

(d) ukuguga akuzi nga

(1)

(e) Intaka yakha ng

(1)

4.3.4 Nika iqhalo elithetha into enye neqhalo ngalinye.

(a) Akukho mlanjana ungagqumiyo.

.....

(1)

(b) Akukho nkwali iphandela enye.

.....

(1)

(c) Isala kutyelwa sibona ngomophu.

.....

(1)

(d) Umzondo awuziva kunuka.

.....

(1)

4.4 IINTSOMI.

Funda esi sicutshulwa uze uphendule imibuzo.

Kwaliile ezinzulwini zobusuku wafika uDyaki ekwabetha inkinge yakhe. Wabheka-bheka kuhle ekhangela ukuba akalalelwanga na. Wathi akubona ukuba akukho ngozi wabeka inkinge yakhe phantsi, wasondela emanzini. Ngethamsanqa weza kanye ngakweli litye wayephantsi kwalo uFudwazana. Ngalo lonke elixesha uFudwazana umthe nyi ngeliso, kodwa engavelanga yena apha kuDyaki. Wathi uDyaki xa esathi nkxu impumlo weva esithiwa khinxi empumlweni ngokunga ubanjwa ngumgibe. Watshela ufudwazana ngomlomo empumlweni kuDyaki, exhathise ematyeni ngemilenze. Waba ngathi ukuthi, hayi bo, kwala. Waxhuzu-xhuzula, wanxapha wayinxeke-nxeke kukudinwa. Kwathi kusithi qheke ukusa wabe uDyaki edinwe wada wayeka nokuzama ukuphuncula. Ukuphuma kwelanga zafika ezinye izilwanyana. Zafike uDyaki ebanjwe nkqi nguFudwazana. Wabanjwa ke uDyaki wasiwa enkundleni yamatyala apho wagwetyelwa ukutshiswa ehleli ade afe.
Phela, phela ngantsomi.

- 4.4.1 Kwenzeke ntoni kumpunzi? (1)
- 4.4.2 Kwabangela ntoni ukufa kukaMpunzi kwezinye izilwanyana? (2)
- 4.4.3 Sesiphi esinye isilwanyana esazinikelayo? (1)
- 4.4.4 Qhinga lini elenziwa lufudo ukuze lukwazi ukuhlasela uDyaki? (2)
- 4.4.5 Saba yintoni isiphelo sikaDyaki apho edamini? (2)
- 4.4.6 Yintoni le yayibangela ukuba ezinye izilwanyana zimnqande uFudwazana? (1)
- 4.4.7 Isifundisa ntoni le ntsomi? (1)

4.5 AMAQHINA.

- 4.5.1 Bhala imisebenzi yamaqhina ibe-2. (2)
- 4.5.2 Bhala indlela ekwakhiwa ngazo amaqhina zibe-2. (2)
- 4.5.3 Gqibezela ezi zala maqhina. (1)
- (a) Jikelele _____ (1)
- (b) Cwaka _____ (1)
- (c) Ndesuka, Ndah _____ (1)
- 4.5.4 Yakha amaqhina ngezi mpendulo. (1)
- (a) ziinyawo. (1)
- (b) ligazi. (1)
- (c) ngamazinyo. (1)
- (d) lulwimi. (1)

AMANQAKU ECANDELO D: [40]

ICANDELO E
UMBUZO 5

Amabali Amafutshane: Imbadu: Sinxo G.B.

5.1 Funda isicatshulwa uze uphendule imibuzo.

“Nohajisi! Nohajisi!” Wakhala watsho uTipha ekudandathekeni okukhulu komphefumlo. “Asingubo le nto – yikalika!”

Ngelo xesha kanye atshoyo, angena amapolisa amlandayo, amthatha aya kumvalela entolongweni.

- 5.1.1 Chaza ubuhlobo obuphakathi kukaTipha noNohajisi. (1)
- 5.1.2 Yikalika ebitheni le? Naba. (2)
- 5.1.3 Khetha eyona mpendulo iyiyo.
- (a) UTipha (ubile, uphiwe ingxowa yomgubo.) (1)
 - (b) UTipha (ulihlwempu, sisityebi.) (1)
 - (c) Ingxowa (yamsinda, yabalula) emva kwemvula. (1)
 - (d) UNohajisi wapheka (imifino, umqa, umngqusho) ngaloo mgubo. (1)
 - (e) Imbiza yakhe (yayingavuthwa, yavuthwa.) (1)

5.2 Phendula imibuzo ngesicatshulwa esilandelayo.

Zahamba iintsuku uMakhwange entywizisa ezi nyembezi. Wesuka ngohlobo olungazekiyo wankwenkwe yimbi. Emva koko waya ebhitya ngohlobo oloyikekayo, ngokokude abazali bakhe bothuke, baxhale ngaye, nangona ekuqaleni, ngokwazi ukungayikhathaleli kwakhe imfundo, le nto bengazange bayinanze. Yaya impilo kaMakhwange isiba mandundu. Waqala ngoku wanga uhliwa lugezo, kwafuneka ke ngoku ukuba kuyiwe kosiyazi. Zonke ezo ntsuku sasixhalabe sonke, sinangcinga inye, yokuba umhlobo wethu lo uza kuba leliya libotshelwayo igeza, okanye afe fi, ngenxa yomvandedwa anawo. Ewe, wayengumbono owoyikekayo ngoku eyiloo nto enqine yangamathambo, ihamba yodwa, ithetha yodwa ngokwelidala kanye igeza.

- 5.2.1 Abazali bakaMakhwange babecinga ukuba ukhalela ntoni? (1)
- 5.2.2 Chonga igama elibonisa ukuba wayekhala. (1)
- 5.2.3 Bhala iimpawu ezibonisa ukungonwabi kwakhe. (2)
- 5.2.4 Yintoni le yayimangaze abazali bakhe? (1)
- 5.2.5 Bhala igama elikulo mhlathi nelibonisa ukuba uMakhwange wahliwa yimpambano. (1)
- 5.2.6 Kwathi kanti yintoni le yayimkhalisa? (1)
- 5.2.7 Kwenzeka ntoni kule hagu? (1)

5.3 Phendula imibuzo ngesicatshulwa esilandelayo:

Ngenye imini, aba bafazi namadoda abo babevela ematyaleni; ngoku yayise iphele gungqu inyanga, kungekho ubhekisa nelimdaka komnye, ngenxa yentiyano enzulu eyayise iphakathi kwabo. Kwathi ke xa basondelayo ngasemizini yabo, bakhawulelwa yinzolo erhanelekayo. Ekugqibeleni, imigqumo yayiyekile ukothusa umzi lowa. Azi kuhle ntoni na ezilwanyaneni zabo! Kuthe qatha ngelo xesha linye kubo bobabini aha bafazi into yokuba izilo zabo, abazithanda kunene, zibulelene. Bobabini baya sebengasanyatheli ezindlwaneni zeehagu, bafika kweyokuqala, yo! Ize. Baya bebhamba kweyesibini – uthi babona ntoni?

Nazo zombini iinkunzi zeehagu, esazulwini sendlwane, intloko yenye iqamele ngegxabala lenye, zonwabe, zikwaTyebilekende, zikhothana ngothandwano olukhulu izinto ezinkulu, kucace mhlophe ukuba ayisekho nakancinane ezinkumbulweni zazo into yokuba zakha zalwa.

Abafazi bajonga ezihagwini, bajika bajongana, bethe manga. Yaqala yangena intshumayelo. Baphuthumana ukubambana ngezandla, iinyembezi zisihla ezidleleni zabo, wawakala uNomalizo esithi, "Nontsontelo, mntakabawo, masixolelane; yini ukuba side sishunyayezwe naziihagu!"

Balilelana, bobabini beseluchwayitani olukhulu.

- 5.3.1 Sithini isihloko seli bali? (1)
- 5.3.2 Babevela phi aba bantu? (1)
- 5.3.3 Yintoni imbangi yokungathethisani kwala makhosikazi? (2)
- 5.3.4 Kwakuse kulixesha elingakanani bengathethisani? (1)
- 5.3.5 Bhala igama elifumaneka kumhlathi-1 nelithetha ukungevani. (1)
- 5.3.6 Aba bafazi babecinga ntoni apha endleleni? (1)
- 5.3.7 Bafika benzani emizini yabo? (1)
- 5.3.8 Bazifumana phi ezi hagu? (1)
- 5.3.9 Esi senzo sezi hagu sinamfundiso ni kula makhosikazi. (1)

5.4 Phendula imibuzo ngesi sicutshulwa esilandelayo.

Yayithe ngco intliziyo kaZenani ngenxa yomsebenzi asandula ukuwenza. UDengana wayewufumene lo msebenzi wakhe ngobumbikrolo, kodwa ke yakha yabonwaphi na impindezelo enjengaleyo wayeyifumene? Ewe, impindezelo yinto emyoli ngokobusi; abo bathi ayinjalo, abathethi, bayabhuda.

Esamana ecamanga njalo, wangena unoposi. Wayivula incwadi leyo, wafunda:

“Zilindile othandekayo – Umcimbi wokuchithwa kwakho emsebenzini bendiwugqithisele phambili. Abaphathi balo mzi bathe ngokugqala inkonzo yakho, basirhoxisa isigqibo sam; bagqiba ke ngoko ukuba uphindele kwasemsebenzini wakho ukuba ngaba usawufuna. Ukuba uyavuma ukubuyela, nendlu leyo ukuyo usaya kuthi rhoqo uhlale kuyo.”

George Dold, uNolali.

“Halala! Halala! Huntshu!” Wakhwaza esitsho unkabi; “Umsebenzi wam usengowam.”

Kwathi, ngelo xesha kanye, amehlo akhe athana ngqa nezo ndonga zendlu yakhe sezingathi ngumqolomba ngoku.

“Athi ke mna! Athi ke mna!” Wakhala watsho ekudandathekeni okukhulu. “Indlu yam! Indlu yam! Yinene, le nto iyimpindezelo ayisoloko imyoli; maxa wambi, njengakum namhla, ikrakra njengekhala!”

- 5.4.1 Waziphindisela njani uZenani ngokugxothwa kwakhe? (1)
- 5.4.2 Umsebenzi wakhe wawuthathwe ngubani? (1)
- 5.4.3 Bhala ibinza elibonisa ukuba lo msebenzi wakhe awuzange uthathwe kakuhle. (2)
- 5.4.4 Kutheni esithi umbhali impindezelo imnandi njengobusi? (2)
- 5.4.5 Ndaba zini awazifumanayo uLindile malunga nomsebenzi wakhe? (1)
- 5.4.6 Wenzeni umfo kaZenani ukubonisa ukuvuyela ukubuyela emsebenzini wakhe? (1)
- 5.4.7 Yintoni eyatshintsha olu chwayito? (1)
- 5.4.8 Bhala izifanekiso zwi ezisetyenziswe ngumbhali ukunika umfanekiso-ngqondweni. (2)
- 5.4.9 Kuthetha ntoni;
(a) ukuthi ngco? (1)
(b) basirhoxisa? (1)

- 5.5 Sifunde ntoni kweli bali? (1)

AMANQAKU ECANDELO E: [40]

AMANQAKU EWONKE: 80