



education

Department:
Education
REPUBLIC OF SOUTH AFRICA

**NATIONAL
SENIOR CERTIFICATE**

IGREYIDI 12

ISINDEBELE ILIMI LESIBILI LOKUNGEZELELA (SAL)

IPHEPHA LESIBILI (P2)

EXEMPLAR 2008

IMITLOMELO: 80

ISIKHATHI: AMA-IRI AMA-2

IPHEPHELI LINAMAKHASI 5.

YELELA:

1. Iphepheli lineengaba ezintathu. ISIGABA A, B no- C:

ISIGABA A: Amatheksti wokuzitlamela

ISIGABA B: Amatheksti amade wokuthintana

ISIGABA C: Amatheksti wokuthintana amithombo, anikela ilwazi,
abukelwako kanye
naweendlela ezahluahlukeneko zokuthintana

2. Phendula imibuzo engaphasi kweengaba zontathu.
3. Khetha imibuzo ukuya ngemiyalo onikelwe yona.

ISIGABA A: AMATHEKSTI WOKUZITLAMELA**UMBUZO 1**

Khetha isihloko ESISODWA utlole ngaso indaba engaba namagama ali-150 ukuya e-180.

Tjengisa umtamo wakho wokuthoma la utlhatlhabeje khona nala ulungise khona iimphoso ngombana uzokwabelwa imitlomelo elitjhumi, bese kuthi eminye imitlomelo ayibuthelele gomsebenzi opheleleko.

1.1 Ibizelo engilithandako. [40]

NOFANA

1.2 Tlola indaba egcina ngomutjho olandelako:

"Ngathoma ukubona lapho bona ukukhamba ebusuku kuyingozi." [40]

NOFANA

1.3 Umdlalo webhegere yephasi we-2010 ubonakala kuligadango elihle lokuqotha/lokurarha umtlhago eSewula Afrika. Tlola indaba uveze wo ke amaphuzu asekela umbono lo. [40]

NOFANA

1.4 Tlola indaba emayelana nokuqakatheka kwefundo njengesilodlhelo sepilo. [40]

NOFANA

1.5 Qalisisa isithombe esilandelako utlole indaba bewuyiphe nesihloko. [40]



NOFANA

1.6 Isehlakalo esimbi engeze ngasikhohlwa. [40]

IMITLOMELO YESIGABA A: 40

ISIGABA B: AMATHEKSTI AMADE WOKUTHINTANA**UMBUZO 2**

Khetha isihloko ESISODWA bese utlola ngaso. Umtlolwakho ube namagama ama-60 ukuya kwama-80.

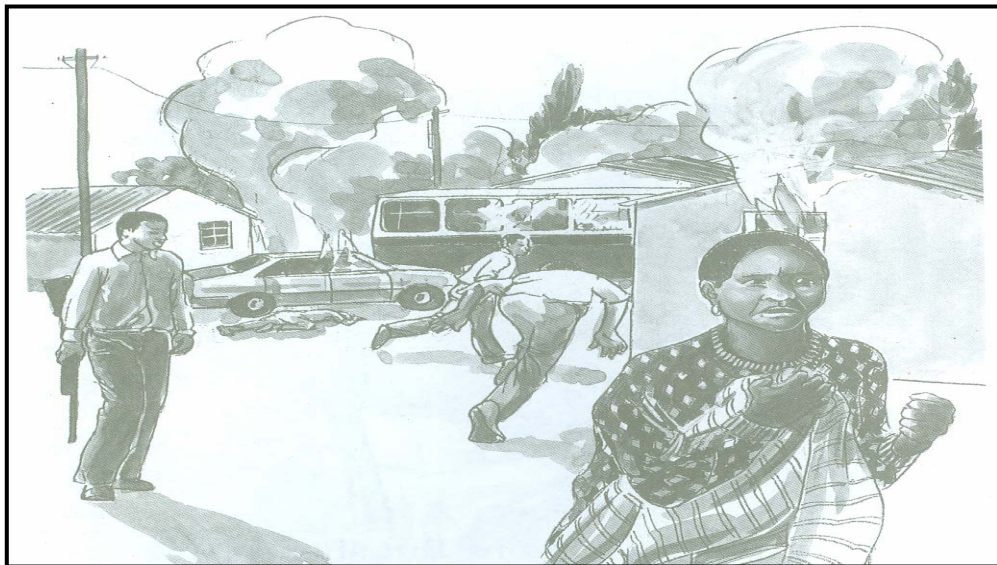
- 2.1 Tlola umnganakho incwadi umazise ngokuthola umfundaze wokuragela phambili ngefundo nawuqeda igreyidi le-12.

[20]**NOFANA**

- 2.2 Tlola ikulumopendulwano hlangana komfundi ongasalibhadiko esikolweni notitjherehloko.

[20]**NOFANA**

- 2.3 Qalisisa isithombe esilandelako bese utlola umbiko ozowuthumela emapholiseni ngesehlakalo ongeze wasikhohlwa.

**[20]****NOFANA**

- 2.4 Uthenge umabonakude esitolo esithileko esiphakamileko, yeke uthole bona akusiyo yombala owufunako. Tlola esitolo ubazise ngephoso abayenzileko.

[20]**IMITLOMELO YESIGABA B:****20**

**ISIGABA C: AMATHEKSTI WOKUTHINTANA AMITHOMBO, ANIKELA ILWAZI,
ABUKELWAKO KANYE NAWEENDLELA EZAHLUKAHLUKENEKO
ZOKUTHINTANA.****UMBUZO 3**

Khetha isihloko ESISODWA kilezi ezilandelako bese utlola ngaso. Umtlolwakho ube namagama ama-40 ukuya kwama-60.

- 3.1 Tlola abangani bakho ikarada ubathokoze ngokuza kwabo emtjhadweni kadadwenu. [20]

NOFANA

- 3.2 Tlola isikhangiso esimayelana nokuvulwa kwesikolo esitjha samabanga aphakamileko. [20]

NOFANA

- 3.3 Esikolweni senu kunomnyanya wokulayelisa utitjherehloko njengombana sele athole isikhundla esiphezulu nje. Tlola iimphathiswa amakarada weememo. [20]

NOFANA

- 3.4 Tlola iphostara emayelana neemfundo ezitja eniyozenza umnyaka olandelako. [20]

IMITLOMELO YESIGABA C: 20
INANI LOKE: 80